

**GAWRON
TURGEON
ARCHITECTS**
29 Black Point Road
Scarborough, ME 04074
www.gawronturgeo.com
Tel. 207. 883. 6307
Fax. 207. 883. 0361

SEVENTY-FIVE STATE STREET
CUTLER HOUSE RENOVATION
PORTLAND, MAINE

REVISIONS

#	DATE	DESCRIPTION

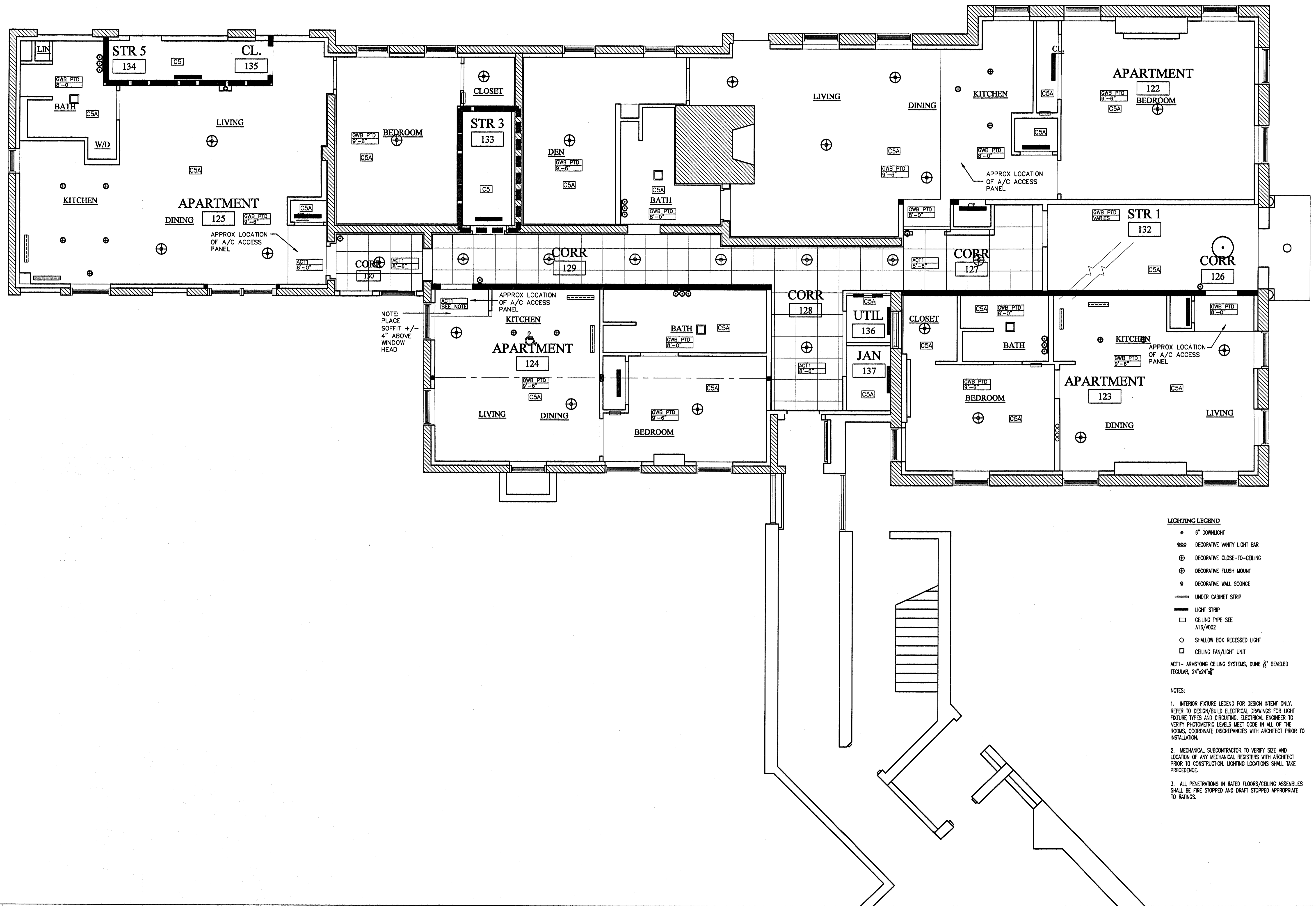
DATE:	2/2/07
PROJECT #	060905
DRAWN BY:	RLA
CHECKED BY:	MET
DRAWING SCALE	1/4"

SHEET TITLE

FIRST FLOOR
REFLECTED CEILING PLAN

A301

© COPYRIGHT 1985-2003
REPRODUCTION OR DISTRIBUTION
OF THIS DOCUMENT WITHOUT
WRITTEN PERMISSION OF
GAWRON ARCHITECTS IS PROHIBITED



LIGHTING LEGEND

- 6" DOWNLIGHT
- ☉ DECORATIVE VANITY LIGHT BAR
- ⊕ DECORATIVE CLOSE-TO-CEILING
- ⊕ DECORATIVE FLUSH MOUNT
- DECORATIVE WALL SCONCE
- UNDER CABINET STRIP
- LIGHT STRIP
- CEILING TYPE SEE A16/A002
- SHALLOW BOX RECESSED LIGHT
- CEILING FAN/LIGHT UNIT

ACT1- ARMSTRONG CEILING SYSTEMS, DUNE 8" BEVELED REGULAR, 24"x24"

NOTES:

1. INTERIOR FIXTURE LEGEND FOR DESIGN INTENT ONLY. REFER TO DESIGN/BUILD ELECTRICAL DRAWINGS FOR LIGHT FIXTURE TYPES AND CIRCUITING. ELECTRICAL ENGINEER TO VERIFY PHOTOMETRIC LEVELS MEET CODE IN ALL OF THE ROOMS. COORDINATE DISCREPANCIES WITH ARCHITECT PRIOR TO INSTALLATION.
2. MECHANICAL SUBCONTRACTOR TO VERIFY SIZE AND LOCATION OF ANY MECHANICAL REGISTERS WITH ARCHITECT PRIOR TO CONSTRUCTION. LIGHTING LOCATIONS SHALL TAKE PRECEDENCE.
3. ALL PENETRATIONS IN RATED FLOORS/CEILING ASSEMBLIES SHALL BE FIRE STOPPED AND DRAFT STOPPED APPROPRIATE TO RATINGS.

A1 FIRST FLOOR REFLECTED CEILING PLAN

1/4"=1'-0"

2/2/07 PERMIT SET