

**GAWRON
TURGEON
ARCHITECTS**

29 Black Point Road
Scarborough, ME 04074
www.gawronturgeon.com
Tel. 207. 883. 6307
Fax. 207. 883. 0361

SEVENTY-FIVE STATE STREET

CUTTER HOUSE RENOVATION
PORTLAND, MAINE

REVISIONS

#	DATE	DESCRIPTION

DATE: 2/2/07

PROJECT #: 060905

DRAWN BY: KW

CHECKED BY: MBT

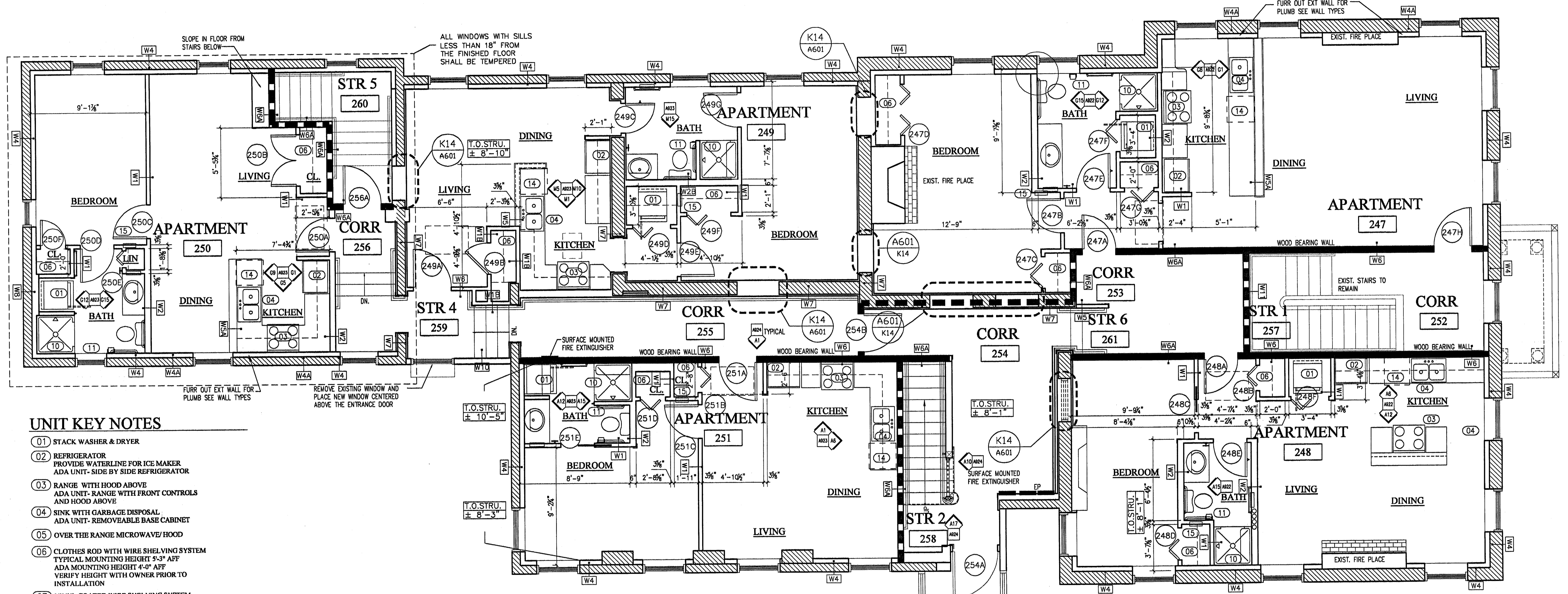
DRAWING SCALE: 1/4"=1'-0"

SHEET TITLE

SECOND FLOOR PLAN

A102

© COPYRIGHT 1985-2003
REPRODUCTION OR RELEASE OF
THIS DOCUMENT WITHOUT
WRITTEN PERMISSION BY
GAWRON ARCHITECTS IS PROHIBITED



UNIT KEY NOTES

- 01 STACK WASHER & DRYER
- 02 REFRIGERATOR
PROVIDE WATERLINE FOR ICE MAKER
ADA UNIT- SIDE BY SIDE REFRIGERATOR
- 03 RANGE WITH HOOD ABOVE
ADA UNIT- RANGE WITH FRONT CONTROLS
AND HOOD ABOVE
- 04 SINK WITH GARBAGE DISPOSAL
ADA UNIT- REMOVEABLE BASE CABINET
- 05 OVER THE RANGE MICROWAVE/ HOOD
- 06 CLOTHES ROD WITH WIRE SHELVING SYSTEM
TYPICAL MOUNTING HEIGHT 5'-3" AFF
ADA MOUNTING HEIGHT 4'-0" AFF
VERIFY HEIGHT WITH OWNER PRIOR TO
INSTALLATION
- 07 VINYL COATED WIRE SHELVING SYSTEM
- 08 TOWEL BAR
- 09 MEDICINE CABINET
- 10 3X3 ADA SHOWER W/ GRAB BARS &
FOLD-DOWN SEAT- VERIFY SIZE & CLEAR
OPENING REQUIREMENTS W/MANUFACTURER
PROVIDE SHOWER ROD FOR CURTAIN
- 11 GRAB BARS - PROVIDE BLOCKING
- 12 PROVIDE BLOCKING FOR FUTURE GRAB BARS
- 13 30"x48" CLEAR FLOOR SPACE TYP.
- 14 DISHWASHER
- 15 WALL SAFE - FIELD VERIFY LOCATION

A1 SECOND FLOOR-PLAN

2/2/07 PERMIT SET

1/4"=1'-0" 1 2 3 4 5 6 7 8 9 10 11 12 13 14 15 16 17 18 19 20