

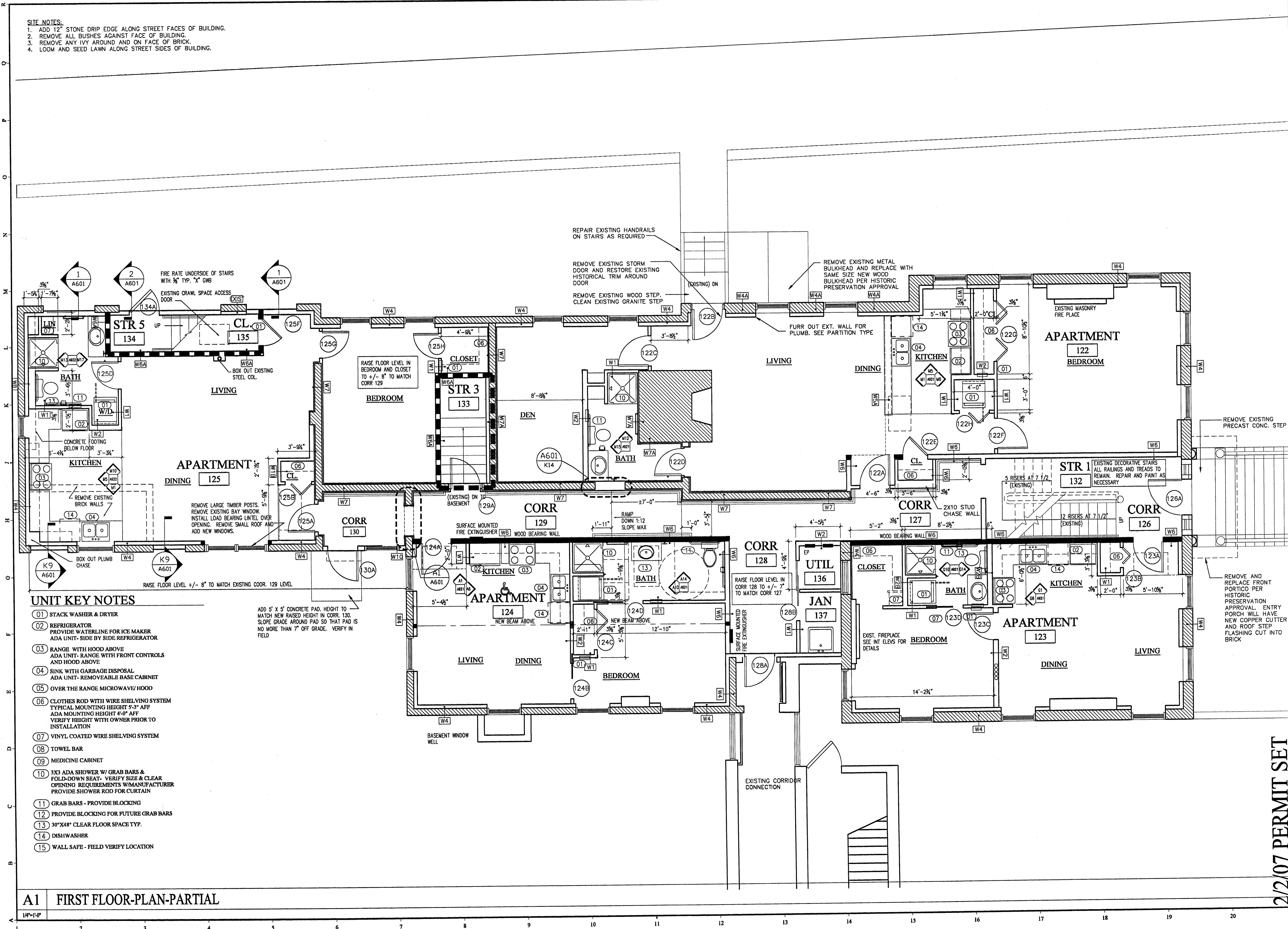
- SITE NOTES:**
1. ADD 12" STONE DRIP EDGE ALONG STREET FACES OF BUILDING.
 2. REMOVE ALL BUSHES AGAINST FACE OF BUILDING.
 3. REMOVE ANY IVY AROUND AND ON FACE OF BRICK.
 4. LOOM AND SEED LAWN ALONG STREET SIDES OF BUILDING.



**GAWRON
TURGEON
ARCHITECTS**

29 Black Point Road
Scarborough, ME 04074
www.gawronturgeon.com
Tel. 207.883.6307
Fax. 207.883.0361

SEVENTY-FIVE STATE STREET
CUTTER HOUSE RENOVATION
PORTLAND MAINE



UNIT KEY NOTES

- 01 STACK WASHER & DRYER
- 02 REFRIGERATOR
PROVIDE WATERLINE FOR ICE MAKER
ADA UNIT- SIDE BY SIDE REFRIGERATOR
- 03 RANGE WITH HOOD ABOVE
ADA UNIT- RANGE WITH FRONT CONTROLS
AND HOOD ABOVE
- 04 SINK WITH GARBAGE DISPOSAL
ADA UNIT- REMOVEABLE BASE CABINET
- 05 OVER THE RANGE MICROWAVE/ HOOD
- 06 CLOTHES ROD WITH WIRE SHELVING SYSTEM
TYPICAL MOUNTING HEIGHT 5'-3" AFF
ADA MOUNTING HEIGHT 4'-0" AFF
VERIFY HEIGHT WITH OWNER PRIOR TO
INSTALLATION
- 07 VINYL COATED WIRE SHELVING SYSTEM
- 08 TOWEL BAR
- 09 MEDICINE CABINET
- 10 3X3 ADA SHOWER W/ GRAB BARS &
FOLD-DOWN SEAT- VERIFY SIZE & CLEAR
OPENING REQUIREMENTS W/MANUFACTURER
PROVIDE SHOWER ROD FOR CURTAIN
- 11 GRAB BARS - PROVIDE BLOCKING
- 12 PROVIDE BLOCKING FOR FUTURE GRAB BARS
- 13 30"x48" CLEAR FLOOR SPACE TYP.
- 14 DISHWASHER
- 15 WALL SAFE - FIELD VERIFY LOCATION

ADD 5' x 5' CONCRETE PAD. HEIGHT TO
MATCH NEW RAISED HEIGHT IN CORR. 130.
SLOPE GRADE AROUND PAD SO THAT PAD IS
NO MORE THAN 7" OFF GRADE. VERIFY IN
FIELD

REVISIONS

#	DATE	DESCRIPTION

DATE:	2/2/07
PROJECT #:	060905
DRAWN BY:	KW
CHECKED BY:	MET
DRAWING SCALE:	1/4"

SHEET TITLE

FIRST FLOOR /
SITEWORK

A101

© COPYRIGHT 1985-2009
GAWRON TURGEON ARCHITECTS
ALL RIGHTS RESERVED. NO PART OF
THIS DOCUMENT WITH ANY
RIGHTS RESERVED BY
GAWRON TURGEON ARCHITECTS IS TO BE REPRODUCED

A1 FIRST FLOOR-PLAN-PARTIAL

2/2/07 PERMIT SET