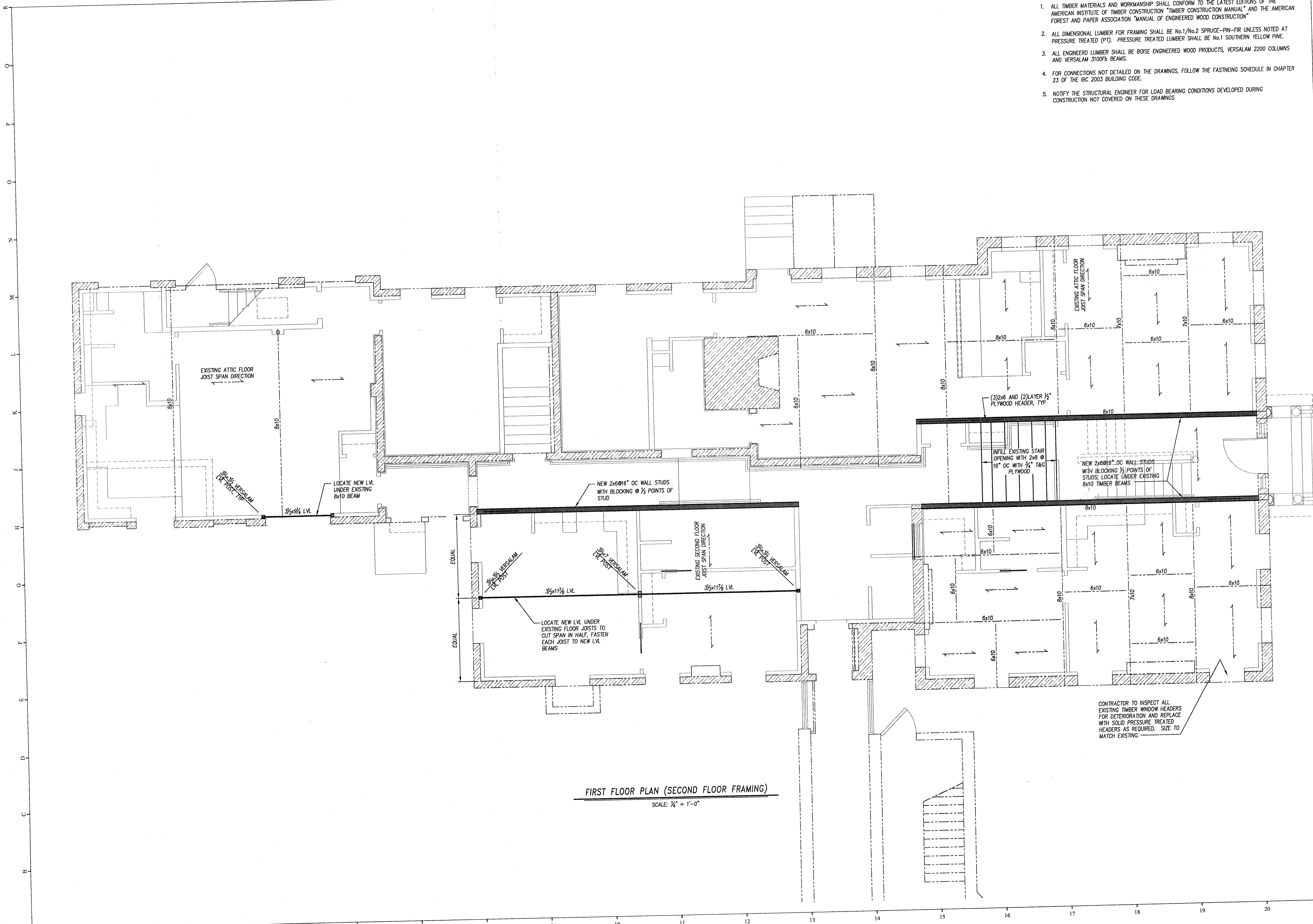


GAWRON TURGEON ARCHITECTS
 29 Black Point Road
 Scarborough, ME 04074
 www.gawronturgen.com
 Tel. 207. 883. 6307
 Fax. 207. 883. 0361

SEVENTY-FIVE STATES STREET
 CUTLER HOUSE RENOVATION
 PORTLAND, MAINE

TIMBER FRAMING NOTES

1. ALL TIMBER MATERIALS AND WORKMANSHIP SHALL CONFORM TO THE LATEST EDITIONS OF THE AMERICAN INSTITUTE OF TIMBER CONSTRUCTION "TIMBER CONSTRUCTION MANUAL" AND THE AMERICAN FOREST AND PAPER ASSOCIATION "MANUAL OF ENGINEERED WOOD CONSTRUCTION"
2. ALL DIMENSIONAL LUMBER FOR FRAMING SHALL BE No.1/No.2 SPRUCE-PIN-FIR UNLESS NOTED AT PRESSURE TREATED (PT). PRESSURE TREATED LUMBER SHALL BE No.1 SOUTHERN YELLOW PINE.
3. ALL ENGINEERED LUMBER SHALL BE BOISE ENGINEERED WOOD PRODUCTS, VERSALAM 2200 COLUMNS AND VERSALAM 3100FB BEAMS.
4. FOR CONNECTIONS NOT DETAILED ON THE DRAWINGS, FOLLOW THE FASTENING SCHEDULE IN CHAPTER 23 OF THE IBC 2003 BUILDING CODE.
5. NOTIFY THE STRUCTURAL ENGINEER FOR LOAD BEARING CONDITIONS DEVELOPED DURING CONSTRUCTION NOT COVERED ON THESE DRAWINGS



FIRST FLOOR PLAN (SECOND FLOOR FRAMING)
 SCALE: 1/4" = 1'-0"

REVISIONS		
#	DATE	DESCRIPTION

DATE:	1/25/07
PROJECT #	060905
DRAWN BY:	PDR
CHECKED BY:	
DRAWING SCALE	AS NOTED

SHEET TITLE
 FIRST FLOOR FLOOR PLAN

S101

© COPYRIGHT 1985-2003
 REPRODUCTION OR RESALE OF
 THIS DOCUMENT WITHOUT
 WRITTEN PERMISSION OF
 GAWRON ARCHITECTS IS PROHIBITED