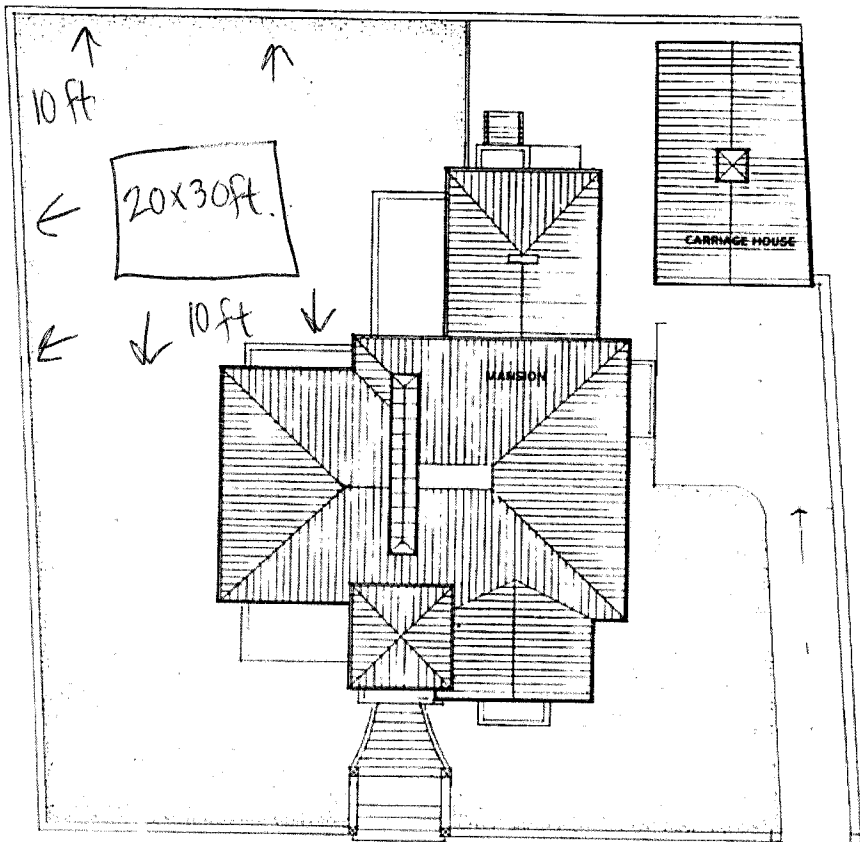
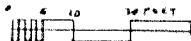


PARK STREET



DANFORTH STREET



\*Tent to be erected & dismantled by Victoria Mansion staff

\*Tent owned by Victoria Mansion, 20x30ft canvas open tent

# VICTORIA MANSION



**MORSE-LIBBY HOUSE**  
 109 DANFORTH STREET  
 PORTLAND, MAINE

SITE PLAN

Ann Beha Associates  
 Architects, Planners & Historic Preservation  
 11 Forest St., Suite 103, Portland, ME 04101-3100