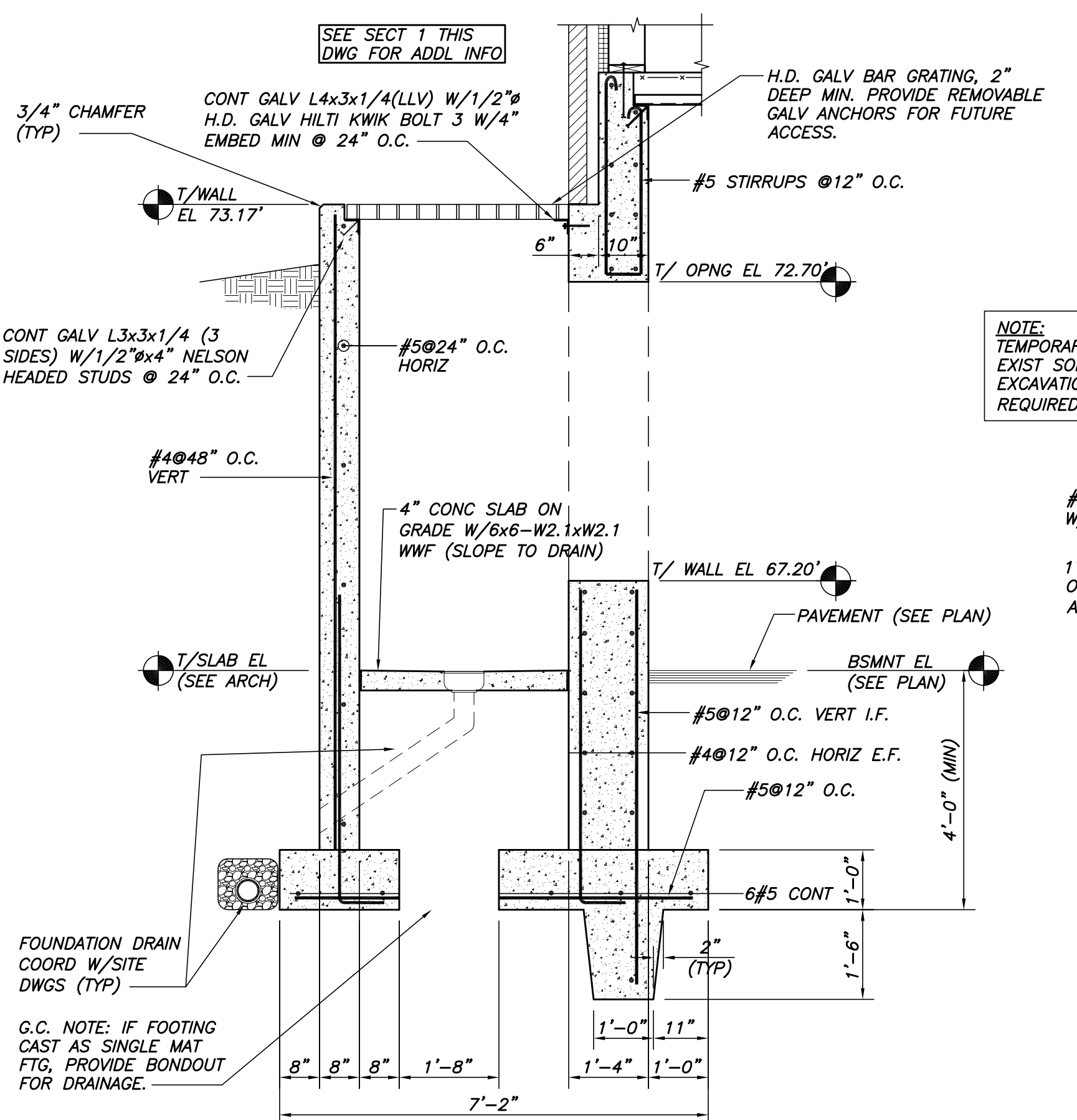
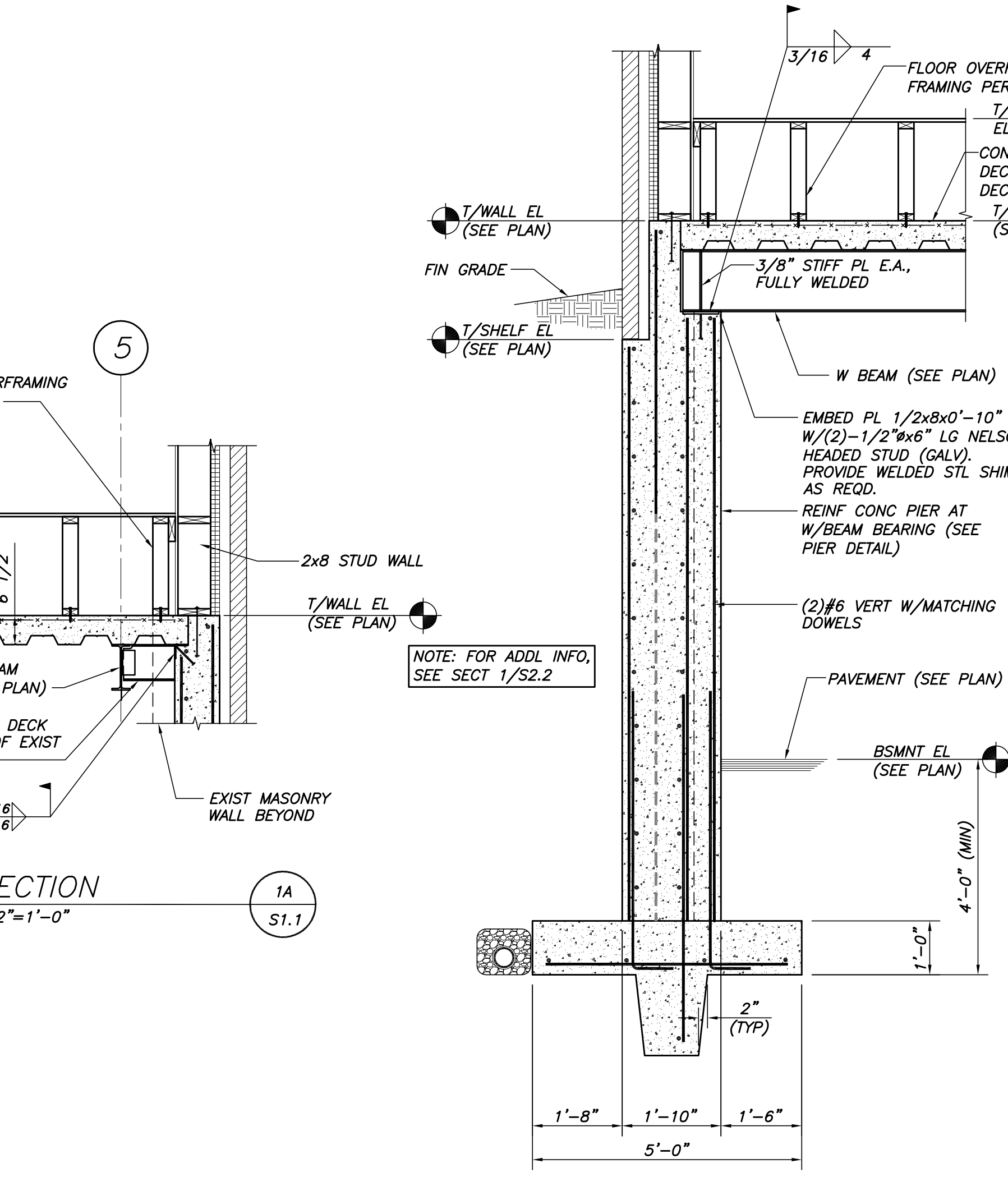


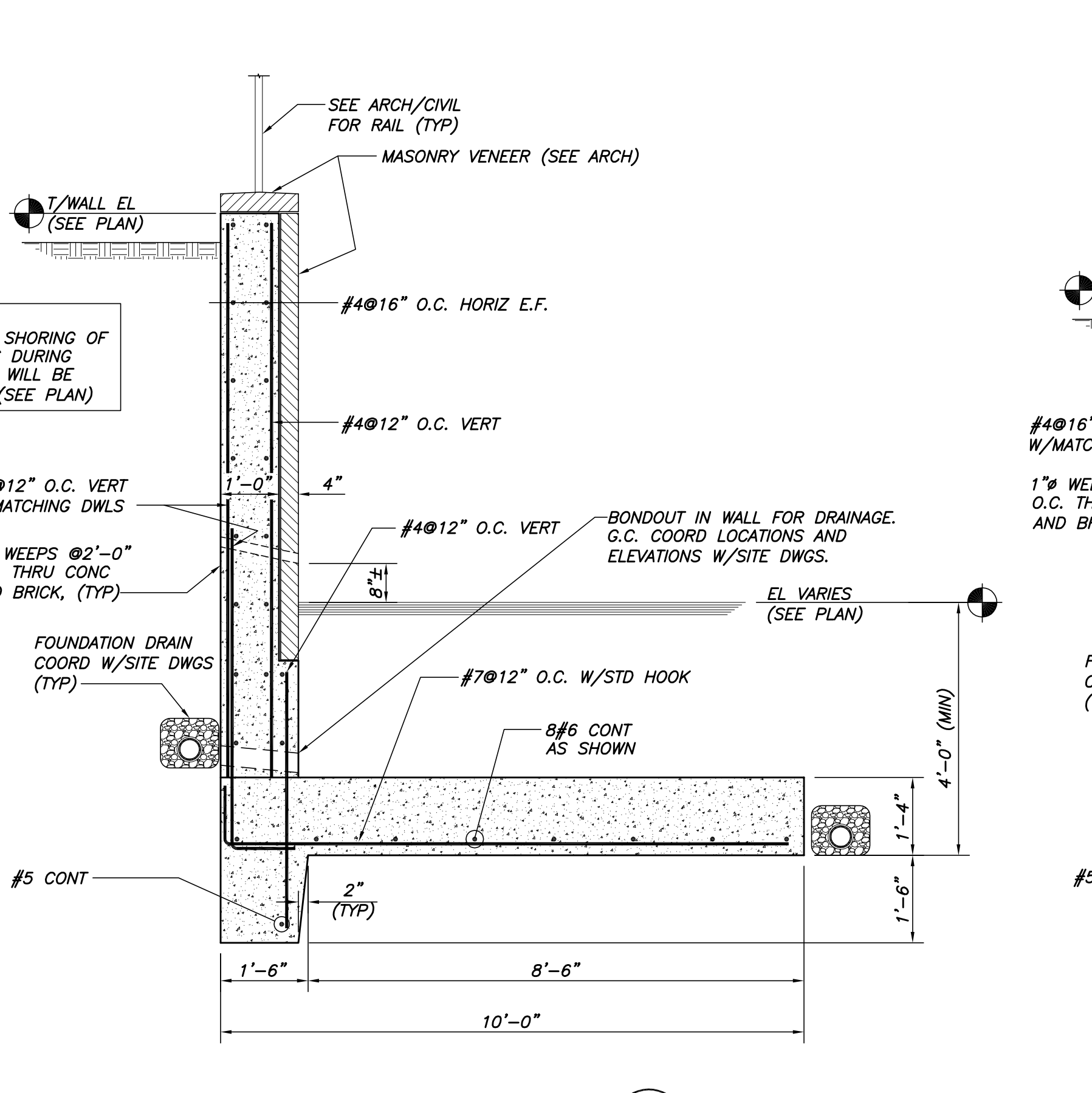
SECTION 1
1/2"=1'-0" S1.1, S1.2



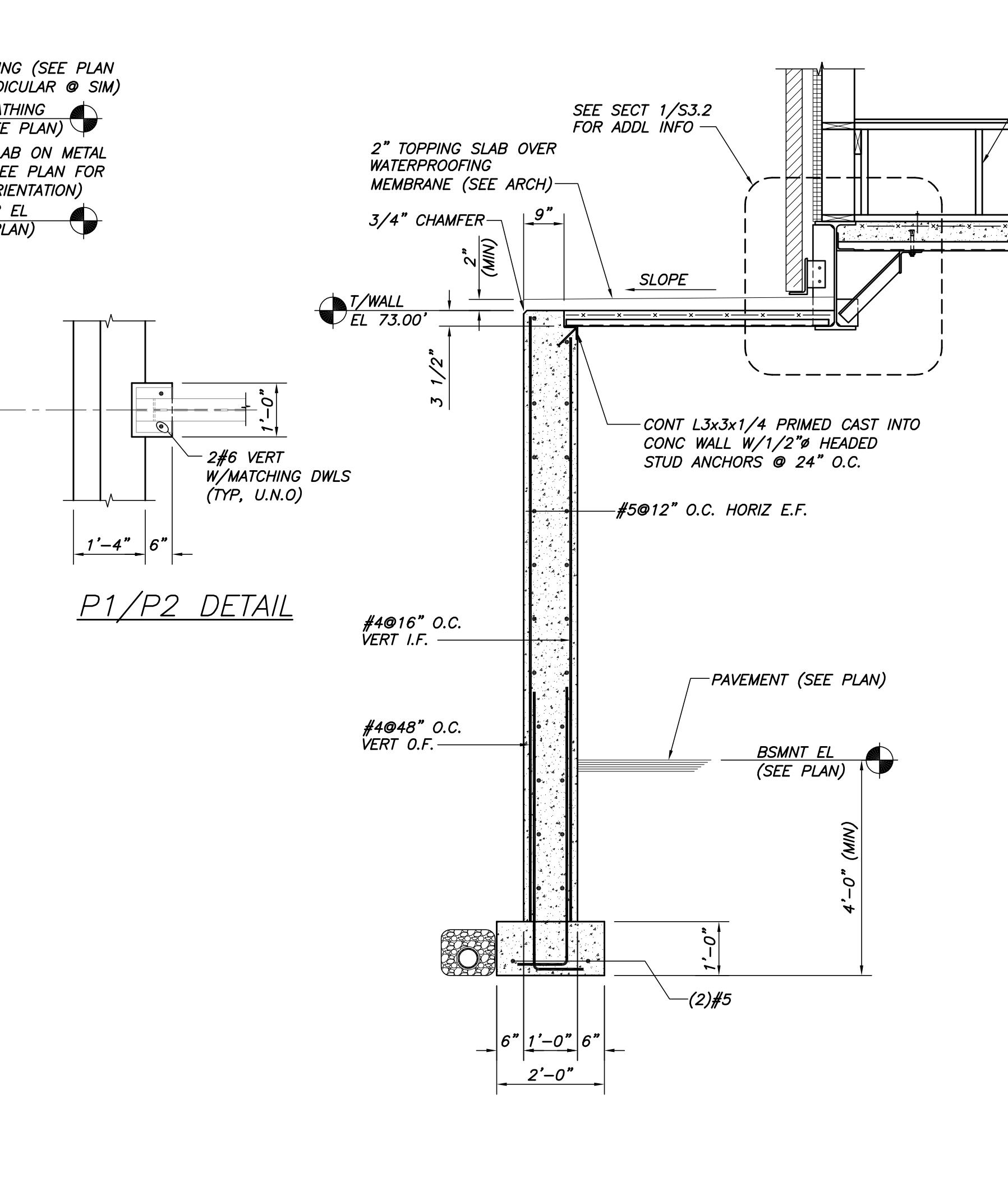
SECTION 4
1/2"=1'-0" S1.1, S1.2



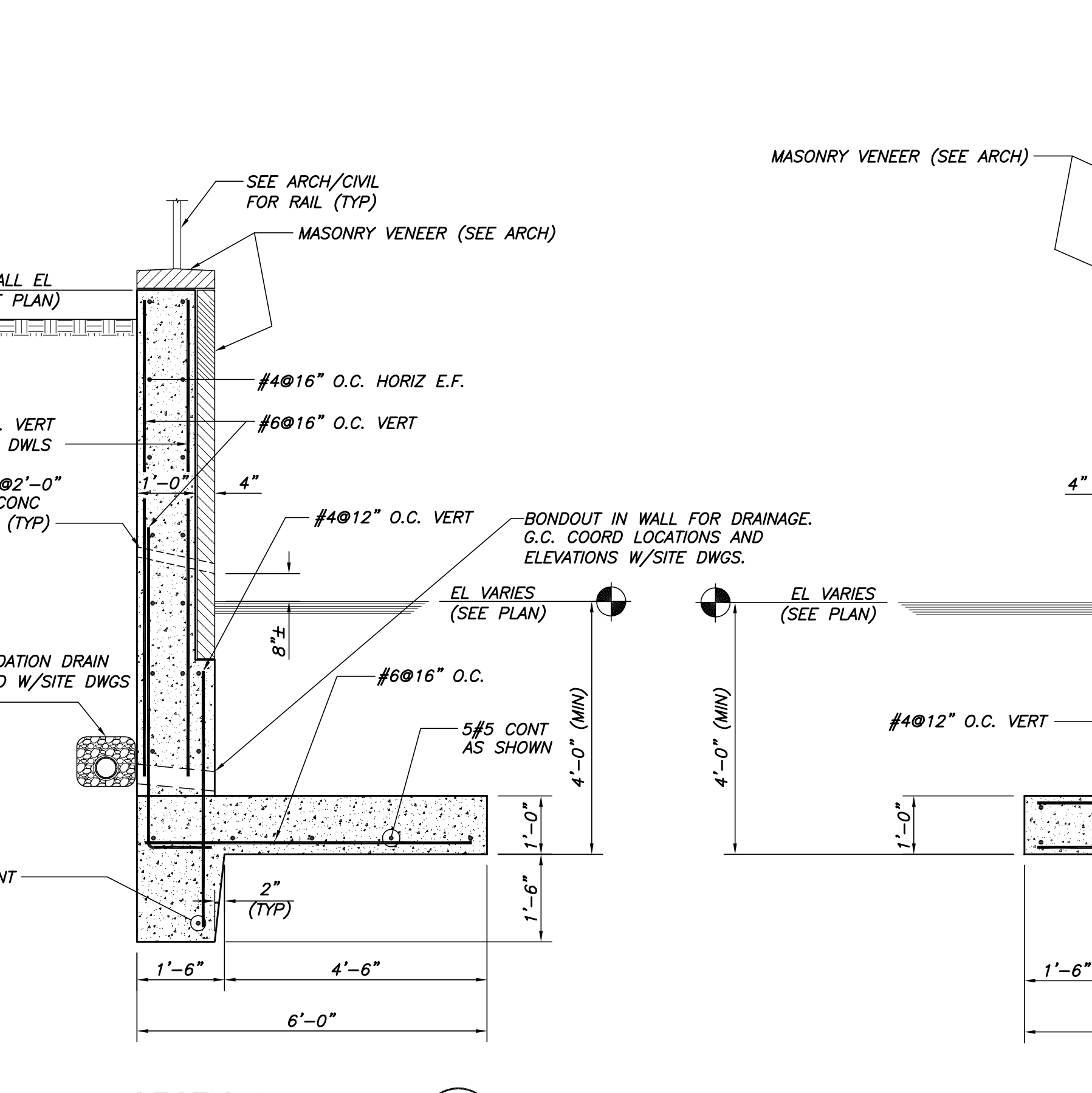
SECTION 2
1/2"=1'-0" S1.1, S1.2



SECTION 5
1/2"=1'-0" S1.1



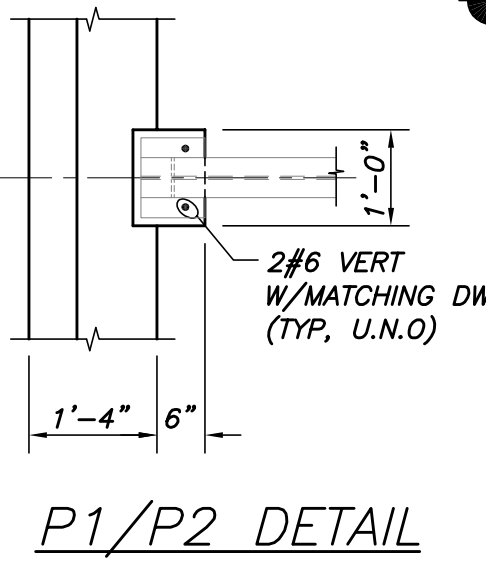
SECTION 3
1/2"=1'-0" S1.1, S1.2



SECTION 6
1/2"=1'-0" S1.1



SECTION 7
1/2"=1'-0" S1.1



CWS
CWS Architects
 Architecture
 Space Planning
 Value Design
 434 Cumberland Avenue
 Portland, ME 04101
 Phone: (207) 774-4441
 Fax: (207) 774-4016
 www.CWSarch.com

STATE OF MAINE
 PAUL B. BECKER
 NO. 6554

Owner:
Children's Hospital Housing Partners, LP
 309 Cumberland Ave.
 Suite 203
 Portland, Maine 04101

CONSTRUCTION MANAGER:
WRIGHT-RYAN CONSTRUCTION
 10 DANFORTH STREET
 PORTLAND, ME 04101
 TEL: (207) 773-3625

ELM TERRACE
 68 HIGH STREET
 PORTLAND, MAINE

BECKER
 75 YORK STREET, PORTLAND, MAINE 04101
 207.819.1828 • beckerstructural.com

Project No: 09428

Drawing Title:
FOUNDATION SECTIONS & DETAILS

Scale: AS NOTED
 Date: SEPTEMBER 08, 2011

Revisions:
 PLANNING BOARD WORKSHOP 01-11-2011
 PLANNING BOARD SUBMISSION 01-18-2011
 MAINE HOUSING CONCEPT SUBMISSION 02-01-2011
 HISTORIC PRESERVATION SUBMISSION 03-23-2011
 50% MAINEHOUSING REVIEW 04-01-2011
 90% MAINEHOUSING REVIEW 06-03-2011

Drawing Number:
S2.2