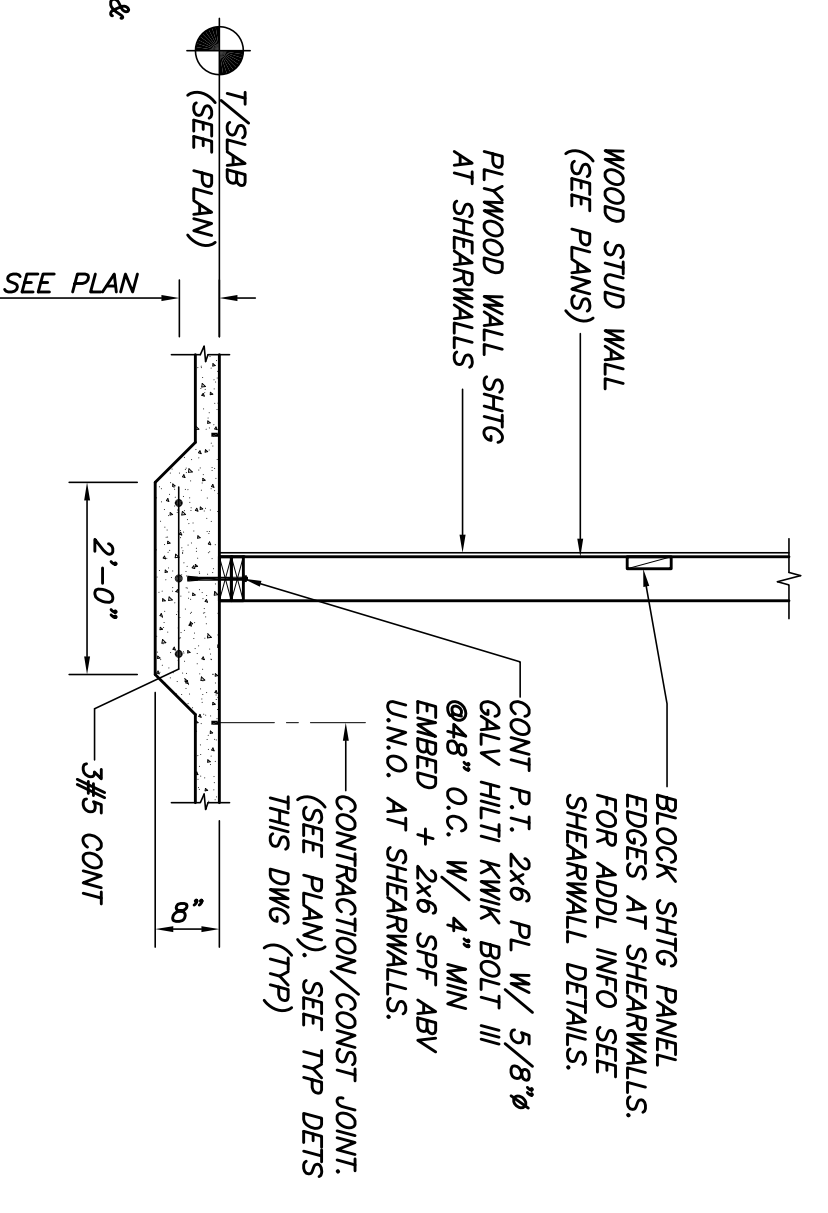
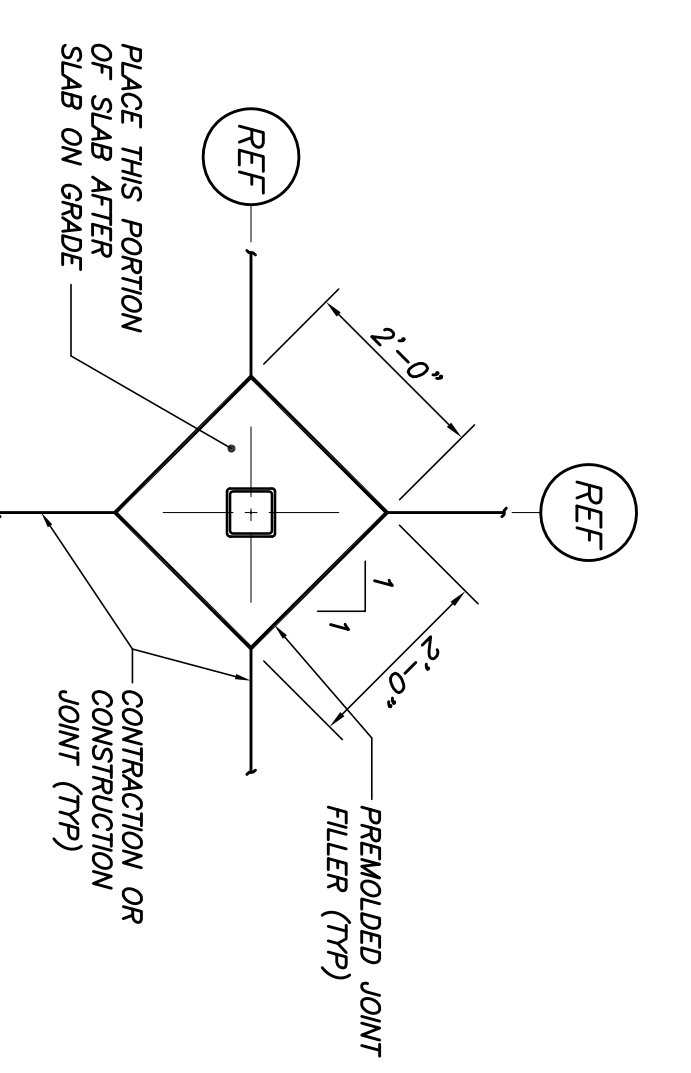


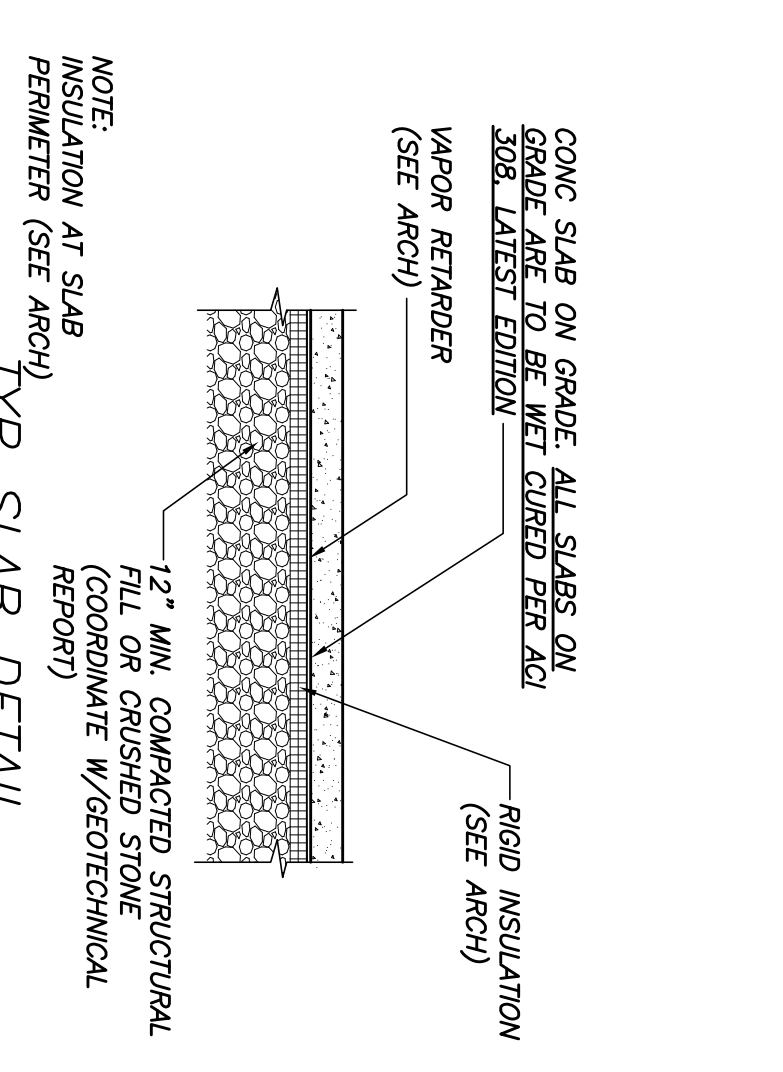
TYP INTERIOR FOOTING DETAIL
N.T.S.



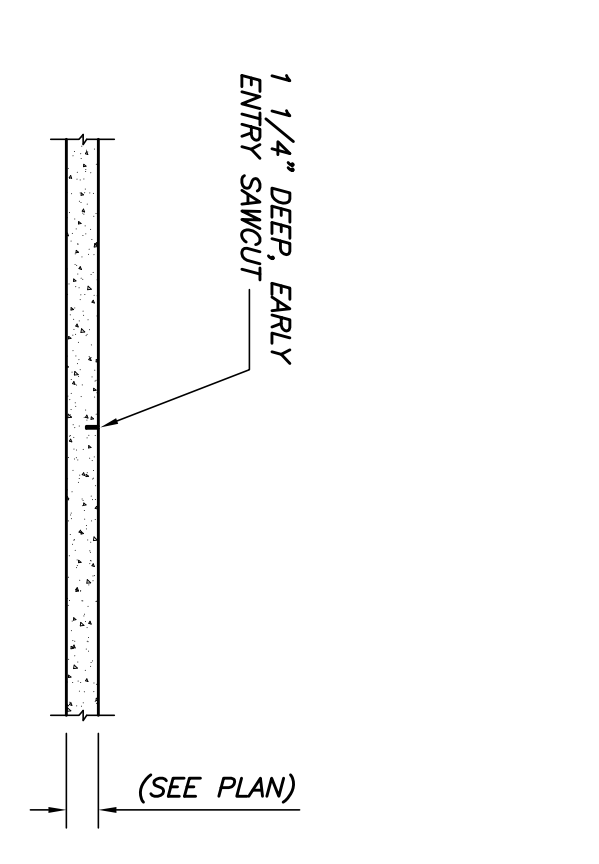
TYP THICKENED SLAB DETAIL
N.T.S.



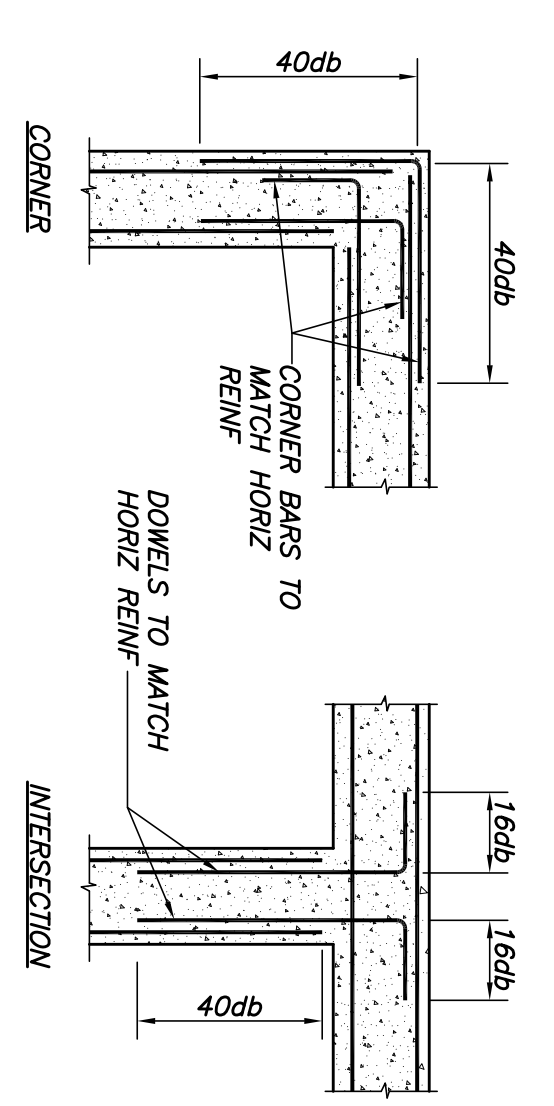
TYP INT COLUMN ISOLATION JOINT DETAIL
N.T.S.



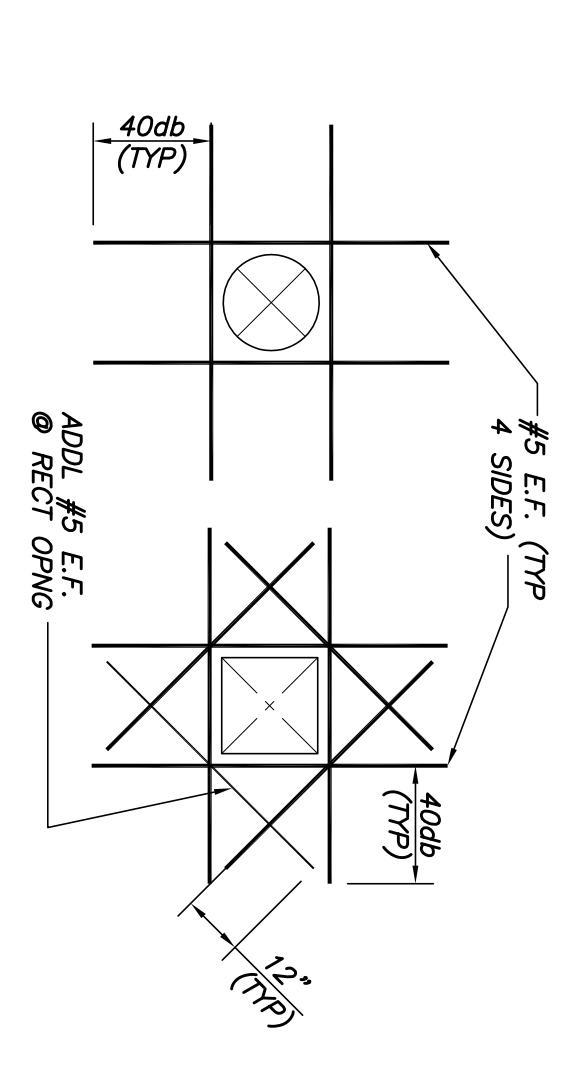
TYP SLAB DETAIL
N.T.S.



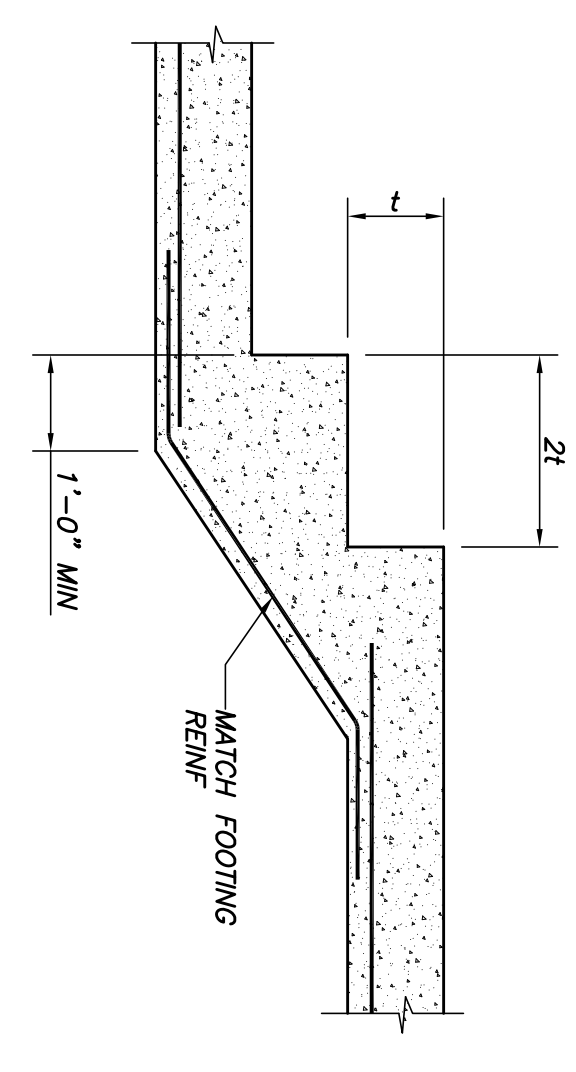
TYP SLAB ON GRADE CONTRACTION JOINT DETAIL
N.T.S.



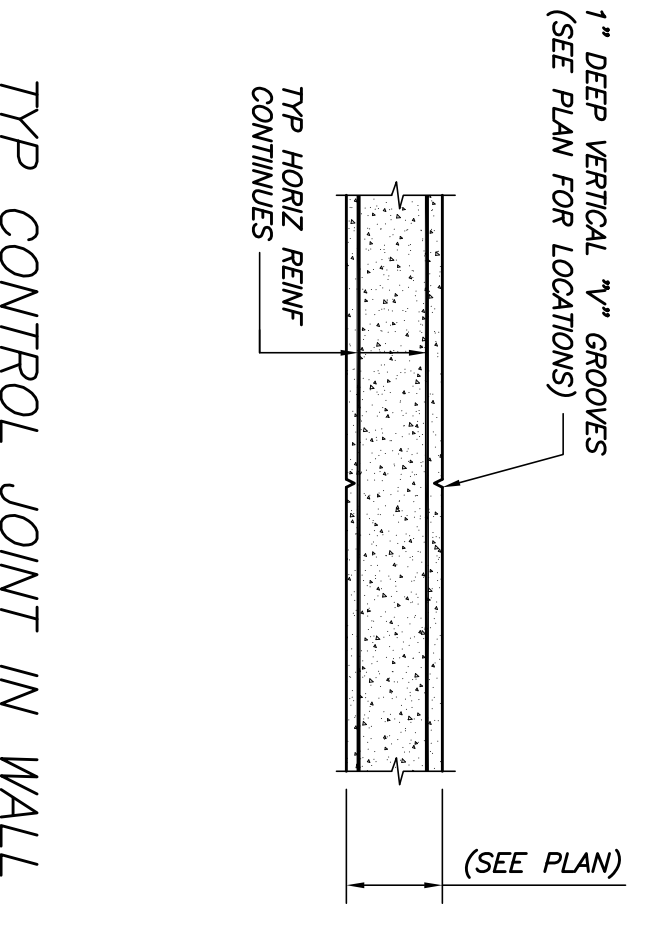
TYP WALL REINF DETAILS
N.T.S.



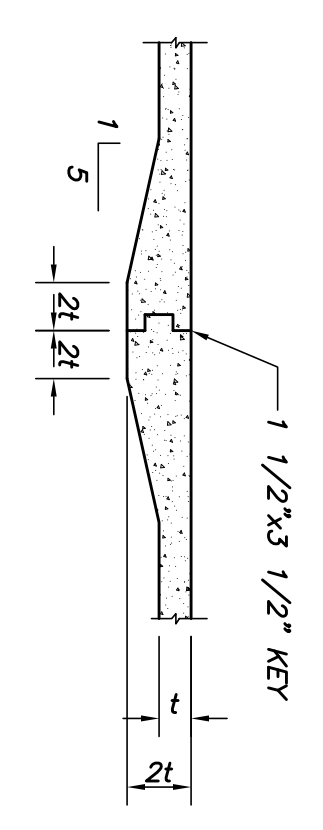
TYP OPENING IN WALL OR SLAB DETAIL
N.T.S.



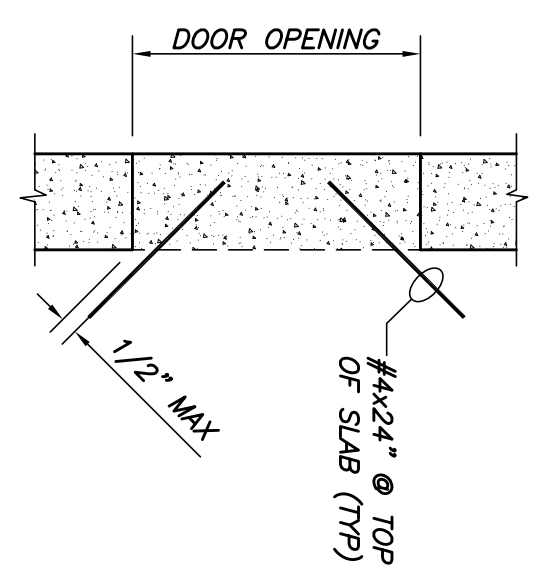
TYP STEP FOOTING DETAIL
N.T.S.



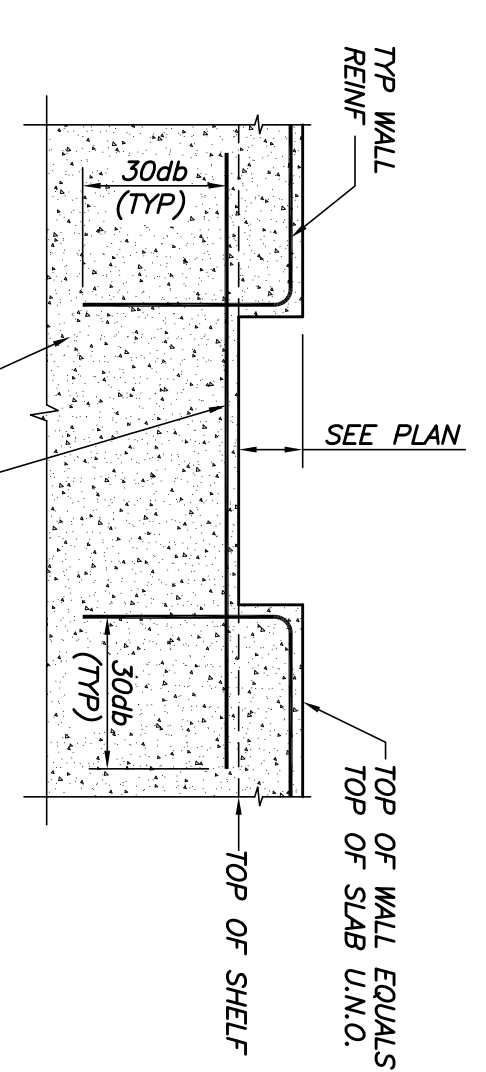
TYP CONTROL JOINT IN WALL
N.T.S.



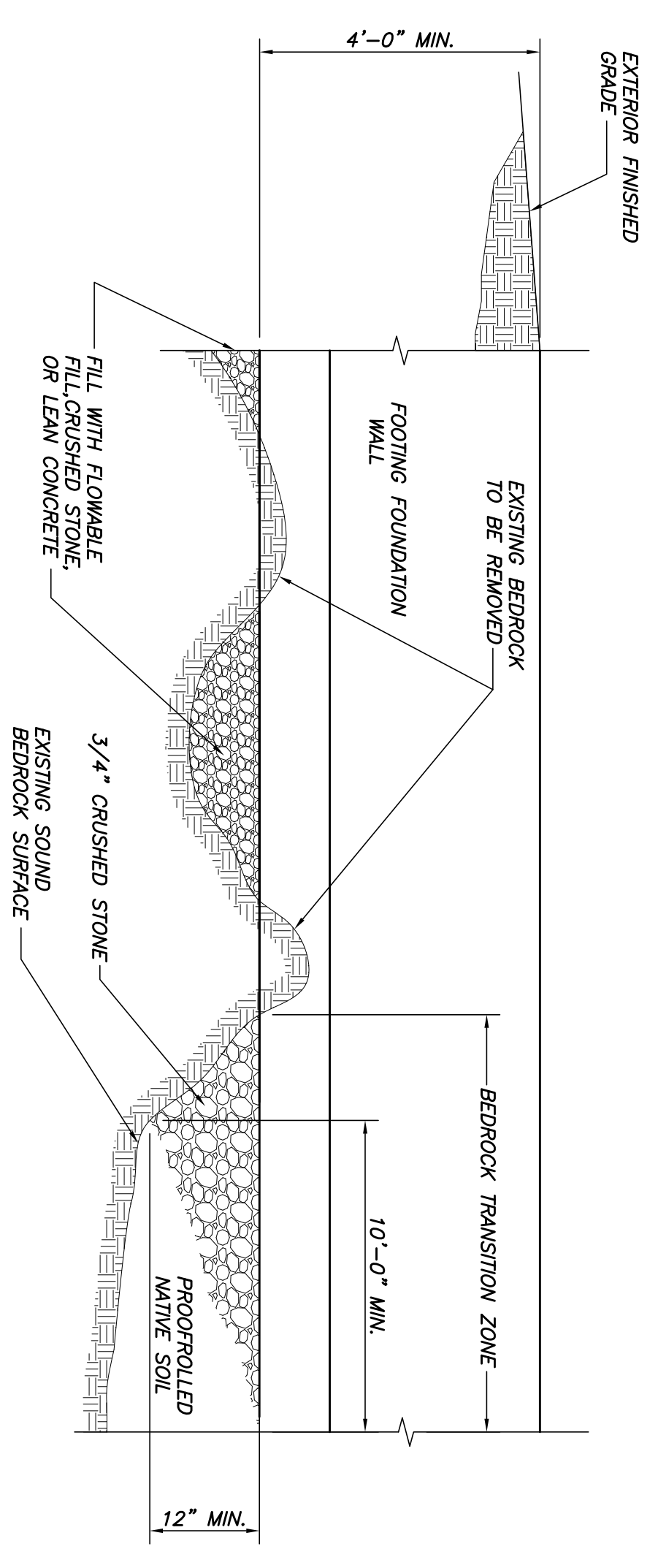
TYP SLAB ON GRADE CONSTRUCTION JOINT DETAIL
N.T.S.



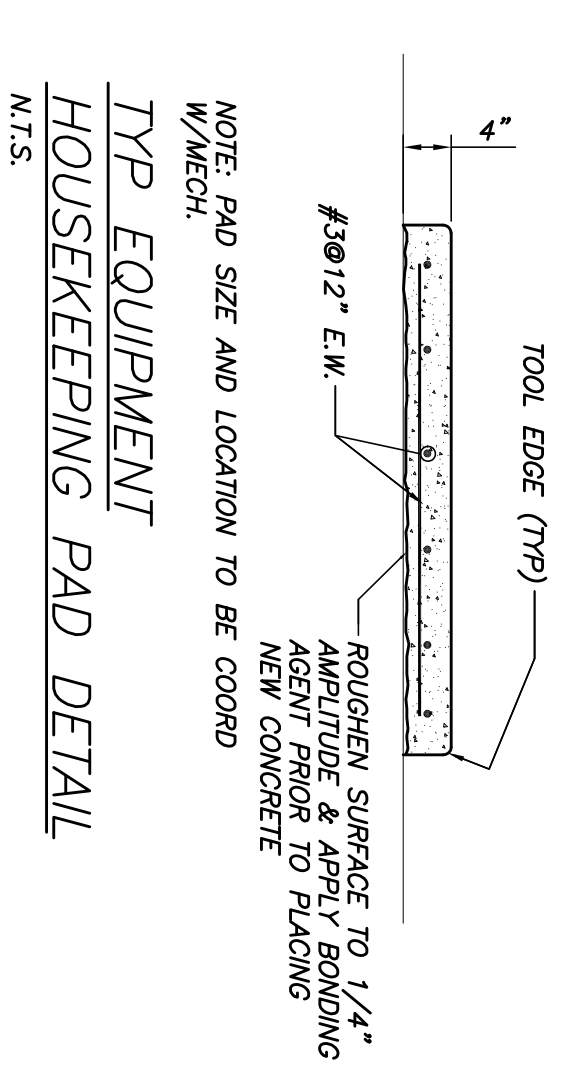
TYP SLAB CORNER DETAIL @ DOOR
N.T.S.



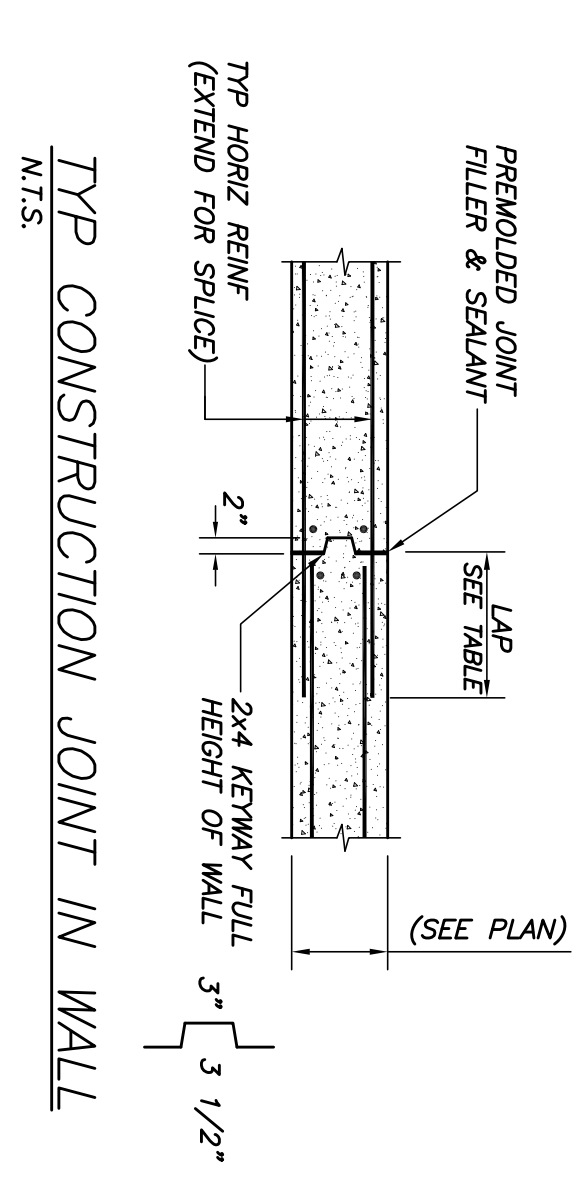
TYP WALL DEPRESSION DETAIL @ DOOR
N.T.S.



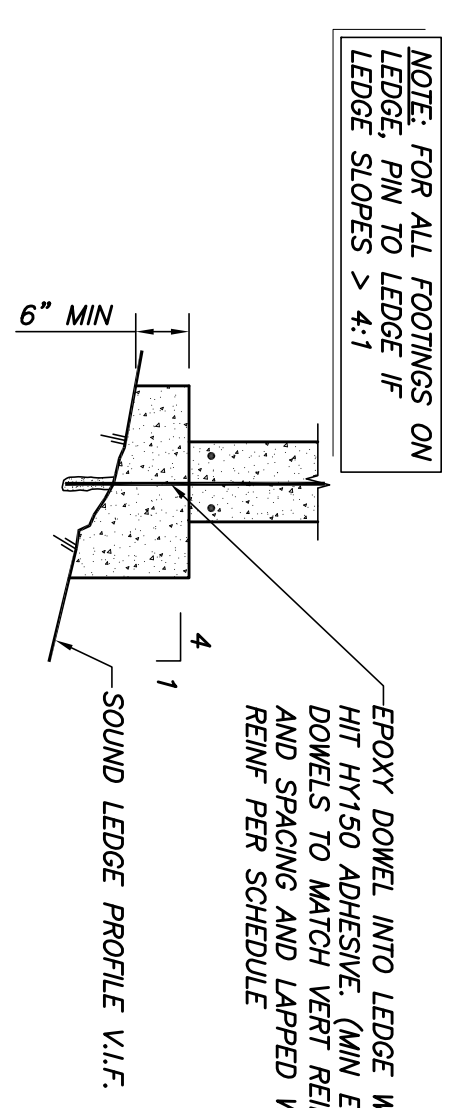
TYP SOIL TO LEDGE TRANSITION DETAIL
N.T.S.



TYP EQUIPMENT HOUSEKEEPING PAD DETAIL
N.T.S.



TYP CONSTRUCTION JOINT IN WALL
N.T.S.



TYP FOOTING SECTION @ LEDGE
N.T.S.

REBAR LAP SPLICE TABLE	
BAR SIZE	LAP LENGTH
#3	30"
#4	36"
#5	48"
#6	56"
#7	81"
#8	93"

NOTE: FOR ALL FOOTINGS ON LEDGE PIN TO LEDGE IF LEAD SLOPES > 4:1

EPoxy DOWEL INTO LEDGE WITH HILT. DOWELS TO MATCH REBAR SIZE AND SPACING AND LAPPED V/VERT REIN PER SCHEDULE

SOUND LEDGE PROFILE V.I.F.

NOTE: PAD SIZE AND LOCATION TO BE COORD W/MECH.

ROUGHEN SURFACE TO 1/4" AMPLITUDE & APPLY BONDING AGENT PRIOR TO PLACING NEW CONCRETE

NOTE: INSULATION AT SLAB PERIMETER (SEE ARCH)

NOTE: CONSTRUCTION JOINT DETAIL

CMS Architects

- Architect
- Space Planning
- Value Design

434 Cumberland Avenue
Portland, ME 04101
Phone: (207) 774-4441
Fax: (207) 774-4016

www.CMSarch.com

Children's Hospital Housing Partners, LP

309 Cumberland Ave. Suite 203
Portland, Maine 04101

CONSTRUCTION MANAGER
WRIGHT-RYAN CONSTRUCTION
10 DANFORTH STREET
PORTLAND, ME 04101
TEL: (207) 773-3025

ELM TERRACE

68 HIGH STREET
PORTLAND, MAINE

BECKER

25 York Street, Portland, Maine 04103
TEL: (207) 838-1000 • www.becker.com

Project No: 09428

Drawing Title: **TYPICAL FOUNDATION DETAILS**

Scale: AS NOTED

Date: SEPTEMBER 08, 2011

Revisions:

- PLANNING BOARD WORKSHOP 01-11-2011
- PLANNING BOARD 01-18-2011
- MAINE HOUSING CONCEPT SUBMISSION 02-01-2011
- HISTORIC PRESERVATION SUBMISSION 03-23-2011
- 50% MAINTENANCE REVIEW 04-01-2011
- 90% MAINTENANCE REVIEW 06-03-2011

Drawing Number: **S2.1**