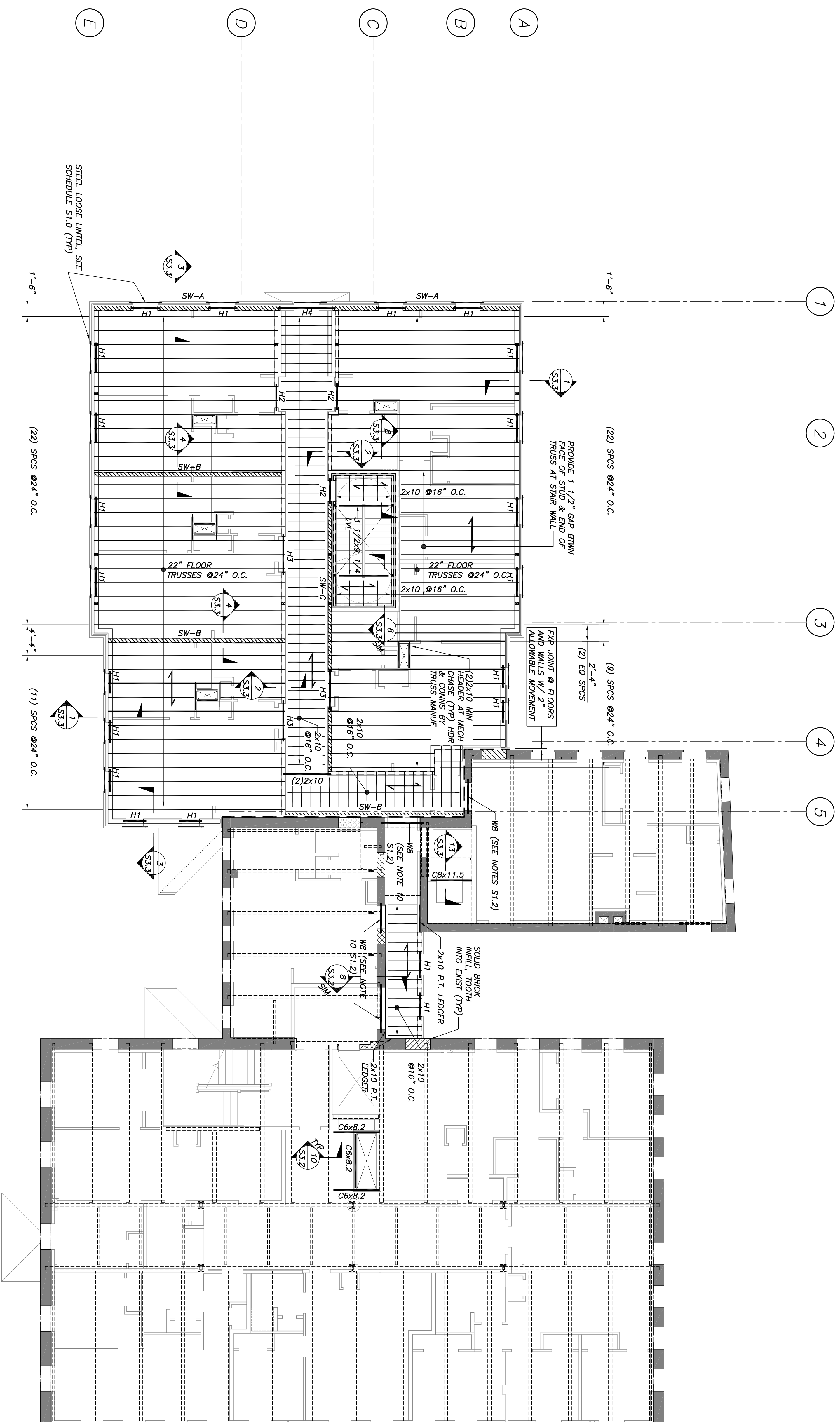


THIRD FLOOR FRAMING PLAN

1/8"=1'-0"

- NOTES:**
1. INDICATES SPAN DIRECTION. 3/4" THICK AWAITING CONNECTIONS TO BE SHOWN TO MATCH EXISTING ET. 100-20-4. (O.C. V.L.F.)
 2. H1, H2 ETC INDICATES WOOD HEADERS. SEE SCHEDULE, THIS DWG.
 3. INDICATES WOOD PANEL SHEARWALL. SEE SCHEDULE DWG S3.4.
 4. EXTERIOR WALLS SHALL BE SHEATHED W/ 1/2" APA RATED SHEATHING WALLED W/ 2x8 WALLS AT 6" O.C. AT STUD SPACING. 1" O.C. AT INTERMEDIATE SUPPORTS. SEE SCHEDULE DWG S3.4.
 5. FLOOR TRUSS DESIGN LOADS ARE AS FOLLOWS (UNO.):
 TC DL: 10 PSF
 TC LL: 40 PSF



CWS Architects

Architecture

Space Planning

Value Design

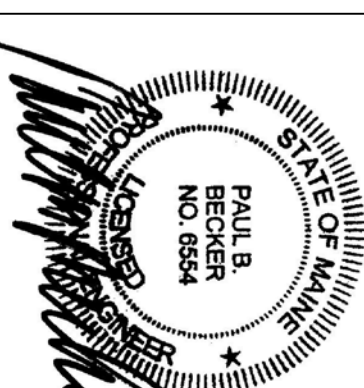
434 Cumberland Avenue

Portland, ME 04101

Phone: (207) 774-4441

Fax: (207) 774-4016

www.CWSarch.com



Children's

Hospital Housing

Partners, LP

309 Cumberland Ave.

Suite 203

Portland, Maine 04101

CONSTRUCTION MANAGER

WRIGHT-RYAN

CONSTRUCTION

10 DANFORTH STREET

PORTLAND, ME 04101

TEL: (207) 773-3625



ELM

TERRACE

68 HIGH STREET

PORTLAND, MAINE

Project No: 09428

Drawing Title:

**THIRD FLOOR
FRAMING PLAN**

Scale: AS NOTED

Date: SEPTEMBER 08, 2011

Revisions:

- △ PLANNING BOARD WORKSHOP 01-11-2011
- △ PLANNING BOARD 01-18-2011
- △ MAINE HOUSING CONCEPT SUBMISSION 02-01-2011
- △ HISTORIC PRESERVATION SUBMISSION 03-23-2011
- △ 50% MAINTENANCE REVIEW 04-01-2011
- △ 90% MAINTENANCE REVIEW 06-03-2011

Drawing Number:

S1.4