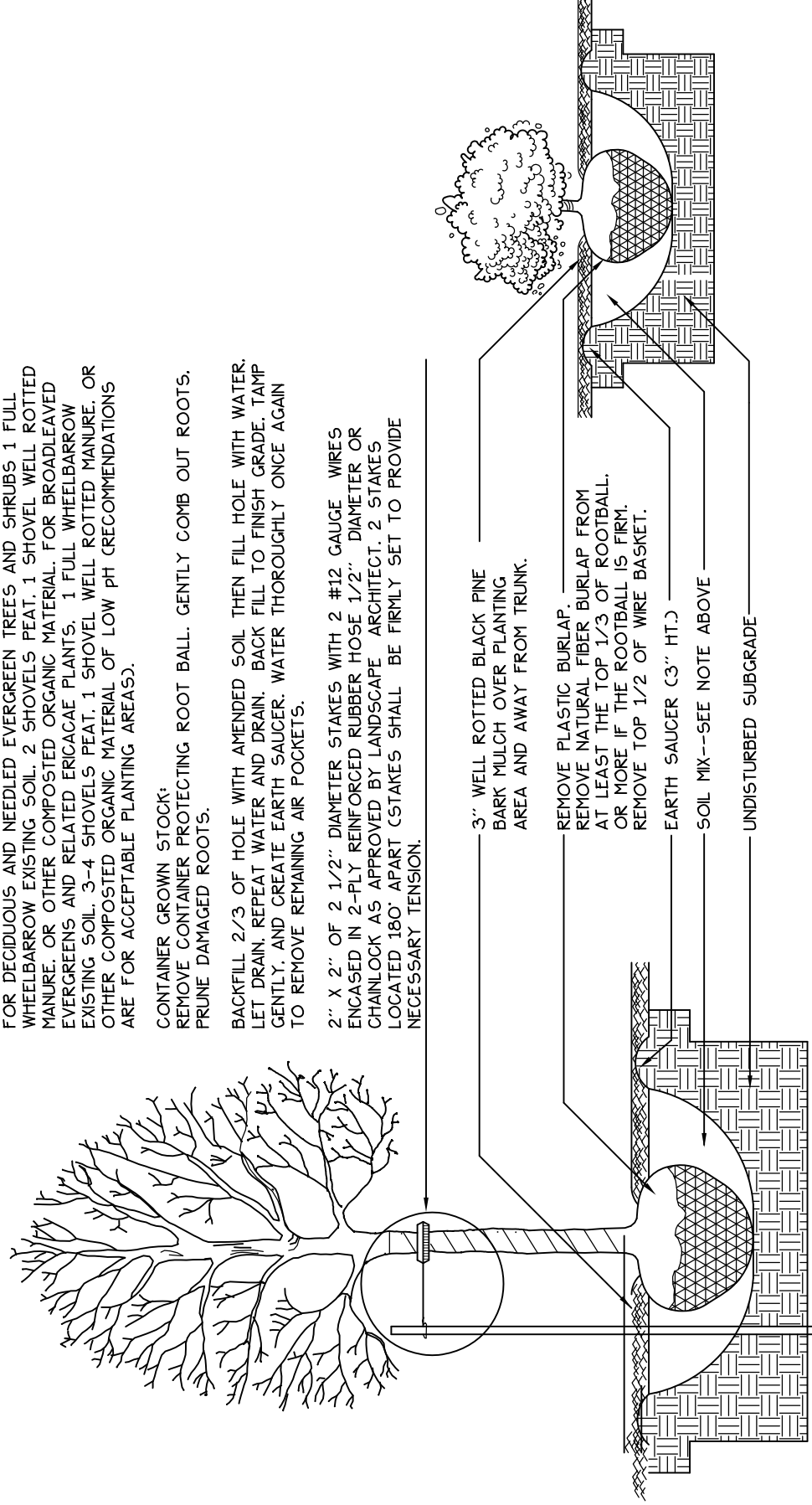


GENERAL PLANTING NOTES

- CALL DIG-SAFE (1-888-344-7333) PRIOR TO BEGINNING WORK. THE LANDSCAPE CONTRACTOR IS ADVISED OF THE PRESENCE OF UNDERGROUND UTILITIES AND SHALL VERIFY THE EXISTENCE AND LOCATION OF SAME BEFORE COMMENCING AND DIGGING OPERATIONS. THE LANDSCAPE CONTRACTOR SHALL REPLACE OR REPAIR UTILITIES PAVING, WALKS, CURBING, ETC. DAMAGED IN PERFORMANCE OF THIS JOB AT NO ADDITIONAL COST TO OWNER.
- CONTRACTOR SHALL THOROUGHLY FAMILIARIZE HIMSELF WITH ALL SITE CONDITIONS PRIOR TO CONSTRUCTION BIDDING. DO NOT SCALE FROM DRAWINGS. ANY OMISSIONS IN DIMENSIONING SHALL BE REPORTED IMMEDIATELY TO THE LANDSCAPE ARCHITECT. ANY DISCREPANCIES BETWEEN DRAWINGS, DETAILS, NOTES AND SPECS SHALL BE IMMEDIATELY REPORTED TO THE LANDSCAPE ARCHITECT FOR FURTHER DIRECTION AND RESOLUTION BEFORE ANY ADDITIONAL WORK PROCEEDS.
- PROVIDE SMOOTH TRANSITION WHERE NEW WORK MEETS EXISTING CONDITIONS.
- ALL PLANT MATERIAL INSTALLED SHALL MEET THE SPECIFICATIONS OF "AMERICAN STANDARDS FOR NURSERY STOCK BY THE AMERICAN ASSOCIATION OF NURSERMEN" LATEST EDITION.
- ALL PLANT MATERIAL SHALL BE FREE FROM INSECTS AND DISEASE. HORTICULTURAL PRACTICES, THIS IS TO INCLUDE PROPER PLANTING MIX, PLANT BED AND TREE PIT PREPARATION, PRUNING, STAKING, OR CUTTING, MAINTENANCE AND PROTECTION FROM THE OWNER.
- ALL GRASS, OTHER VEGETATION AND DEBRIS SHALL BE REMOVED FROM ALL PLANTING AREAS PRIOR TO PLANTING.
- EXISTING TREES TO BE PRESERVED SHALL BE PROTECTED DURING CONSTRUCTION AND SHALL BE THE RESPONSIBILITY OF THE GENERAL CONTRACTOR.
- ALL SHRUB BEDS AND TREE PITS SHALL BE MULCHED WITH 3" CLEAN SHREDDED BLACK MULCH (DO NOT EXCEED 3" DEPTH).
- ANY DEVIATION FROM THE LANDSCAPE PLAN, INCLUDING PLANT LOCATION, SELECTION, SIZE, QUANTITY, OR CONDITION SHALL BE REVIEWED AND APPROVED BY THE OWNER AND LANDSCAPE ARCHITECT AND MUNICIPAL AUTHORITY, IF APPLICABLE, PRIOR TO INSTALLATION ON SITE.
- WHERE INDICATED ON PLAN, PLANTING SOIL MIXTURE FOR GROUND COVER AND PERENNIAL BED AREAS SHALL CONSIST OF FOUR PARTS COVER AND PERENNIAL MIXTURE TO ONE PART SAND. PERENNIAL MIXTURE SHALL BE A 50% BLEND OF PERENNIAL MIXTURE AND COMPOST. PEAT MOSS MAY BE SUBSTITUTED WITH WELL-ROTTED OR DEHYDRATED MANURE OR COMPOST. ROTOTILL BEDS TO A DEPTH OF 8 INCHES.
- DAMAGE TO EXISTING SITE IMPROVEMENTS DURING INSTALLATION OF LANDSCAPE MATERIAL SHALL BE THE RESPONSIBILITY OF THE LANDSCAPE CONTRACTOR.
- ALL WORK WITHIN THE STREET RIGHT-OF-WAY SHALL MEET THE CITY OF PORTLAND STANDARDS.

1 TREE AND SHRUB INSTALLATION

NOT TO SCALE



NOTES

DO THE LAST 12 HOURS WITH A FOOT BALL AND AS DEEP AS THE ROOT BALL. ROOT BALLS WITH ROOTS EXPOSED AT GROUND LEVEL OR SLIGHTLY HIGHER, CORRECT HOLE DEPTH AS NEEDED.

FOR REDWOODS AND NEEDLED EVERGREEN TREES AND SHRUBS: 1 FULL WIDTH OF ROOT BALL, 1 FULL WIDTH OF ROOT BALL, 1 FULL WIDTH OF ROOT BALL, 1 FULL WIDTH OF ROOT BALL. FOR BROADLEAVED EVERGREENS AND RELATED DECIDUOUS PLANTS: 1 FULL WIDTH OF ROOT BALL, 1 FULL WIDTH OF ROOT BALL, 1 FULL WIDTH OF ROOT BALL, 1 FULL WIDTH OF ROOT BALL. OTHER COMPOSTED ORGANIC MATERIAL OF LOW PH RECUMBERATIONS ARE FOR ACCEPTABLE PLANTING AREAS.

CONTAINER GROWN STOCK: REMOVE NATURAL PEEL BURLAP FROM ROOT BALL. REMOVE ROOT BALL GENTLY. COMB OUT ROOTS. PRUNE DAMAGED ROOTS.

BACKFILL 2/3 OF HOLE WITH AMENDED SOIL. THEN FILL HOLE WITH WATER. LET DRAIN. REPEAT WATER AND DRAIN. BACK FILL TO FINISH GRADE. TAMP GENTLY. AND CREATE EARTH SAUCER. WATER THOROUGHLY ONCE AGAIN TO REMOVE AIR POCKETS.

FOR TREES AND SHRUBS WITH 2" DIA. GUY WIRE: ENGAGE IN 2-1/2" REINFORCED NUMBER HOSE 1/2" DIA. CHECK OR CHAINLOCK AS APPROVED BY LANDSCAPE ARCHITECT. 2 STATES NECESSARY TENSION.

3" WELL ROTTED BLACK PINE BARK MULCH OVER PLANTING AREA AND AWAY FROM TRUNK.

REMOVE PLASTIC BURLAP FROM ROOT BALL. REMOVE ROOT BALL OR HOSE IF THE ROOTBALL IS FIRM. REMOVE TOP 1/2" OF WIRE BASKET.

EARTH SAUCER 3" DIA.

SOIL MIX--SEE NOTE ABOVE

UNDISTURBED SUBGRADE

LEGEND

EXISTING	PROPOSED

Prepared For:
Children's Hospital
 Housing Partners, LP
 309 Cumberland Avenue
 Portland, Maine 04101

Prepared By:
MITCHELL & ASSOCIATES
 Landscape Architects
 70 Center Street
 Portland, Maine 04101
 Tel: (207) 774-4427

ELM TERRACE

68 High Street

Portland, Maine

Date: SEPTEMBER 8, 2011

Issued For: SEPTEMBER 8, 2011

Revisions:

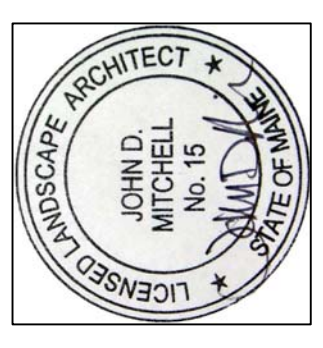
Reproduction or reuse of this drawing without the express written consent of Mitchell & Associates is prohibited.

Title: PLANTING PLAN

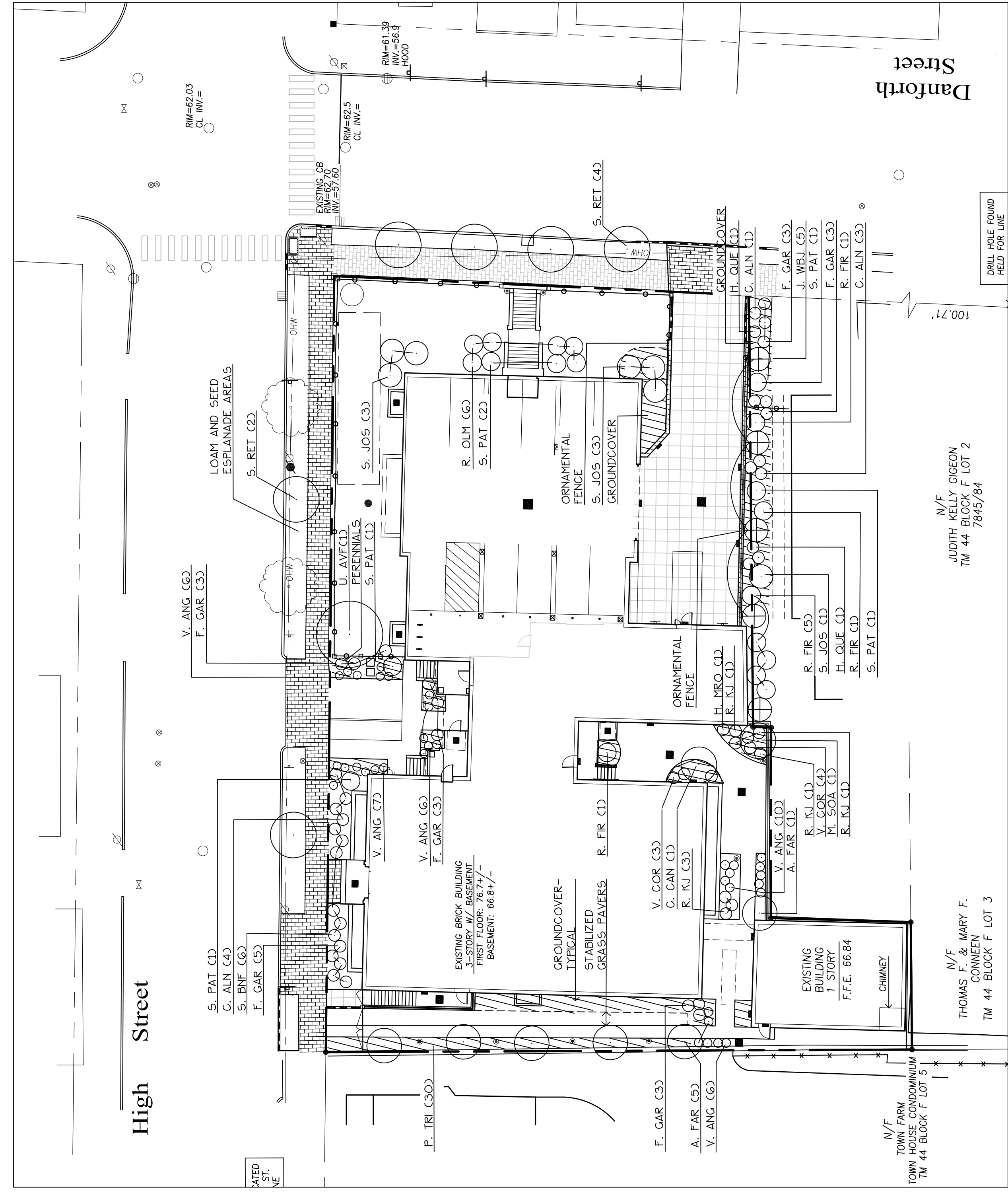
Scale: 1"=20'

North:

Sheet No.: 5



ISSUED FOR SEPTEMBER 8, 2011



PLANT LIST • NOTE: LOCATION OF SELECTED PERENNIALS AND GROUND COVERS SHALL BE COORDINATED WITH PROJECT LANDSCAPE ARCHITECT IN THE FIELD.

KEY	QTY	SCIENTIFIC NAME	COMMON NAME	SIZE
TREES				
A. FAR	6	AGER FREEMANI 'ARMSTRONG'	ARMSTRONG MAPLE	2.5" CAL
C. CAN	1	CERCIS CANADENSIS 'COVEY'	COVEY REDBUD	5'-6" HEIGHT
M. SOA	1	MAGNOLIA SOULANGIANA 'ALEXANDRINA'	ALEXANDRINA MAGNOLIA	5'-6" CAL
S. GAL	9	SYRINGA GALICA 'MEXICANA'	MEXICANA SYRINGA	3" CAL
U. AVF	1	ULMUS AMERICANA 'VALLEY FORGE'	VALLEY FORGE AMERICAN ELM	3" CAL
SHRUBS				
C. ALN	8	CLETHRA ALNIFOLIA 'COMPACTA'	SWEET PEPPERBUSH	#2
F. GAR	20	FOTHERGILLA GARDENI	DWARF BOTTLEBRUSH	#2
H. NRO	1	HYDRANGEA MACROPHYLLA 'ROBERT'	LETS DANCE HYDRANGEA	#2
H. QUE	2	HYDRANGEA QUERCIFOLIA 'SKEES DWARF'	ORACLEAF HYDRANGEA	#2
J. WEL	5	JUNIPERUS WITCHITA BLUE	WITCHITA BLUE JUNIPER	#5
R. FR	6	RHOODODENDRON 'FREESTORY'	FREESTORY RHODODENDRON	#3
R. COLM	6	RHOODODENDRON 'OLGA NEZZITI'	OLGA NEZZITI RHODODENDRON	#3
R. COLM	6	RHOODODENDRON 'OLGA NEZZITI'	OLGA NEZZITI RHODODENDRON	#3
S. PAT	6	SPRAEA PATULA 'M55 RM'	NEON FLASH SPIRAEA	#3
S. PAT	7	SYRINGA PATULA 'M55 RM'	M55 RM LILAC	3'-4' HT.
S. JOS	7	SYRINGA X JOSIFLEVA	JAMES MACFARLANE LILAC	5'-6' HT.
V. COR	7	VACCINIUM CORTHOUSUM	HIGH BUSH BLUEBERRY	#2
V. ANG	55	VACCINIUM AUGUSTIFOLIUM	LOW BUSH BLUEBERRY	#1
GROUND COVERS/ PERENNIALS				
A. ALI	20	ASTILBE ALIVE & BUCKING'	FALSE SPIREA	1 QT
A. ODO	20	ASTILBE ODOREATA 'ORAGAMI MIX'	ORAGAMI MIX	1 QT
H. L5	30	HIERACIUM L5	SWEET WOODRUFF	POT
H. L5	30	HIERACIUM L5	LADY SCARLET (RED) DAFFILY	POT
P. TER	4	PARTHENOCISSUS TERMINALIS	BOSTON IVY	50'/FLAT
P. TER	4	PARTHENOCISSUS TERMINALIS	JAPANESE SPURGE	50'/FLAT
FERNS				
A. NIP	20	ATHYRIUM NIPONICUM 'FICULM'	JAPANESE BANDED FERN	POT
P. POL	25	POLYSTICHUM POLYBLEPHARUM	JAPANESE TASSSEL FERN	POT