

UTILITY NOTES

1. THE UNDERGROUND UTILITIES SHOWN HAVE BEEN LOCATED FROM FIELD SURVEY INFORMATION AND EXISTING DRAWINGS. THE SURVEYOR MAKES NO GUARANTEES THAT THE UNDERGROUND UTILITIES SHOWN COMPRISE ALL SUCH UTILITIES IN THE AREA, EITHER IN SERVICE OR ABANDONED. THE SURVEYOR FURTHER DOES NOT WARRANT THAT THE UTILITIES SHOWN ARE ACCURATELY LOCATED AS SHOWN ON THESE DRAWINGS. THE CONTRACTOR SHALL VERIFY THE LOCATION OF ALL UTILITIES THROUGH THE DOCUMENTATION THAT THEY ARE LOCATED AS SHOWN AS POSSIBLE FROM INFORMATION AVAILABLE. THE SURVEYOR HAS NOT PHYSICALLY LOCATED THE UNDERGROUND UTILITIES. CALL 605-AF-7233 AT LEAST THREE BUSINESS DAYS BEFORE PERFORMING ANY CONSTRUCTION.
2. DO NOT SCALE THESE DRAWINGS. ANY DISCREPANCIES BETWEEN DRAWINGS, DETAILS, NOTES AND SPECIFICATIONS SHALL BE IMMEDIATELY REPORTED TO THE LANDSCAPE ARCHITECT FOR FURTHER DIRECTION AND RESOLUTION BEFORE ADDITIONAL WORK PROCEEDS.
3. CONTRACTOR SHALL VERIFY ALL DIMENSIONS AND GRADES ON THE GROUND. ANY DISCREPANCIES SHALL BE REPORTED IMMEDIATELY TO THE LANDSCAPE ARCHITECT FOR DIRECTION AND RESOLUTION PRIOR TO ANY FURTHER WORK.
4. CONTRACTOR SHALL FIELD VERIFY LOCATION AND DEPTH OF ALL EXISTING UTILITIES WITH THE APPROPRIATE UTILITY COMPANIES PRIOR TO EXCAVATION OF OR INSTALLATION OF ANY PART OF THIS WORK.
5. IT SHALL BE THE RESPONSIBILITY OF THE CONTRACTOR TO RELOCATE ALL EXISTING UTILITIES WHICH CONFLICT WITH THE PROPOSED IMPROVEMENTS SHOWN ON THE PLANS. UTILITIES SHALL BE CONSTRUCTED IN ACCORDANCE WITH THE REQUIREMENTS OF THE CITY OF PORTLAND. THE CONTRACTOR SHALL OBTAIN THE NECESSARY PERMITS FROM THE CITY OF PORTLAND AND THE PORTLAND WATER DISTRICT. ALL UTILITIES SHALL BE INSTALLED IN CONFORMANCE WITH INDIVIDUAL UTILITY DISTRICT REQUIREMENTS; CONTRACTOR SHALL COORDINATE INSTALLATION WITH APPROPRIATE UTILITY DISTRICT BEFORE INSTALLATION.
6. LOCATION OF UTILITY STRUCTURES AND INVERTS OF PIPED UTILITIES MAY BE ADJUSTED TO MEET FIELD CONDITIONS ONLY AFTER PRIOR APPROVAL OF THE OWNER, THE AFFECTED UTILITY COMPANY, AND THE CITY OF PORTLAND.
7. CONTRACTOR SHALL CONDUCT TEST PIT EXCAVATION TO CONFIRM LOCATION OF EXISTING UTILITIES WHERE NEW BUILDING, SANITARY SERVICE AND WATER SERVICE ARE PROPOSED.
8. WHERE STORM DRAINS HAVE LESS THAN FOUR (4) FEET OF COVER BETWEEN THE TOP OF PIPE AND FINISH GRADE, INSULATE PIPE USING TWO (2) INCH THICK STYROFOAM INSULATION BOARD OVER AND ALONG SIDES OF THE PIPE. ALL REQUIRED UTILITIES SERVING THE DEVELOPMENT SHALL BE COORDINATED AND SHOWN ON THESE DRAWINGS. THE CONTRACTOR SHALL BE RESPONSIBLE FOR OBTAINING ALL NECESSARY PERMITS AND FEES SHALL BE PAID BY CONTRACTOR.
9. ALL WATER UTILITY MATERIAL AND INSTALLATION METHODS SHALL CONFORM TO THE STANDARDS OF THE PORTLAND WATER DISTRICT, PORTLAND WATER DISTRICT CONTACT: JANE PASCHAL (207) 774-5961 x3051.
10. THE CONTRACTOR SHALL COORDINATE THE INSTALLATION OF OVERHEAD AND UNDERGROUND UTILITIES WITH THE PORTLAND WATER DISTRICT. PORTLAND WATER DISTRICT CONTACT: JANE PASCHAL (207) 774-5961 x3051.

LEGEND

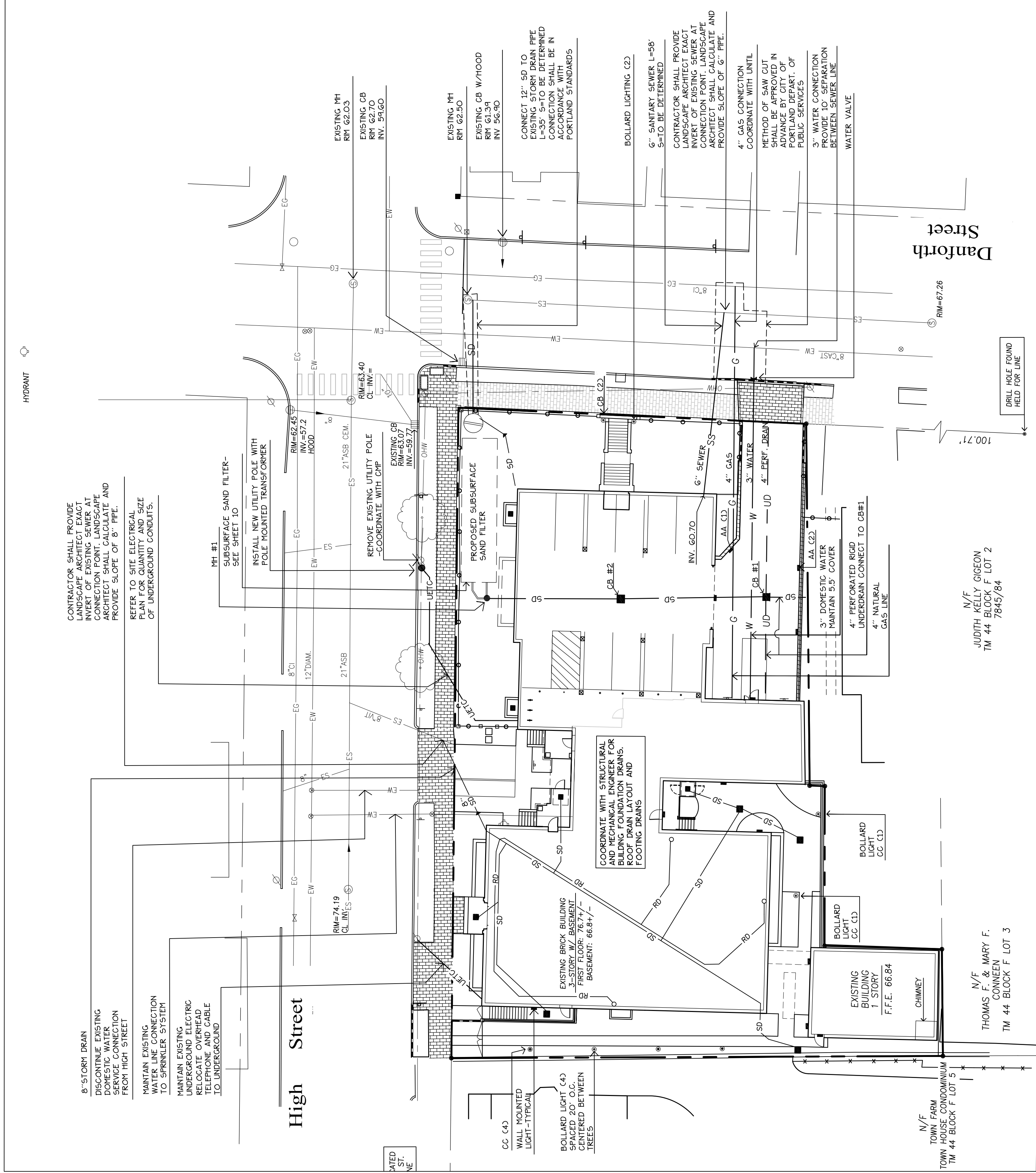
EXISTING	PROPOSED

11. THE CONTRACTOR SHALL COORDINATE THE INSTALLATION OF OVERHEAD AND UNDERGROUND ELECTRIC WITH CENTRAL MAINE POWER. THE CONTRACTOR SHALL BE RESPONSIBLE FOR TOTAL INSTALLATION OF THE UNDERGROUND SERVICE INCLUDING, BUT NOT LIMITED TO, ALL TRENCHING, CONDUIT, PRIMARY AND SECONDARY CABLES, TERMINATIONS, PULL BOXES, ARE CONDUIT, ETC. CENTRAL MAINE POWER CONTACT: JANE COUGHT (207) 842-2597.
12. SANITARY SEWER PIPE SHALL BE POLYVINYL CHLORIDE PIPE MEETING THE REQUIREMENTS OF SD-35 FOR GRAVITY PIPE, UNLESS OTHERWISE NOTED ON THE PLANS. THE CONTRACTOR SHALL COORDINATE THE INSTALLATION OF THE ON-SITE NATURAL GAS SERVICE WITH THE CITY OF PORTLAND. COORDINATE WITH THE PORTLAND DEPARTMENT OF PUBLIC SERVICES, PORTLAND PUBLIC SERVICES CONTACT: DAVID MARGOLIS-PNEO. (207) 874-8890.
13. PIPE LENGTH EQUALS THE CENTER TO CENTER DISTANCES BETWEEN CATCH BASINS OR MANHOLE.
14. ROOF DRAIN CONNECTIONS SHALL BE CONFIRMED WITH FINAL BUILDING PLANS.
15. THRUST BLOCKS OR LOOSING RETAINER GLANDS SHALL BE PLACED ON THE WATER DISTRIBUTION LINES AT ALL BENDS, TEES, REC HYDRANTS, VALVES, CHANGES IN DIRECTION, AND AT THE END OF EACH MAIN. THE CONTRACTOR SHALL MEET THE REQUIREMENTS OF THE PORTLAND WATER DISTRICT.
16. THE CONTRACTOR SHALL COORDINATE THE INSTALLATION OF THE ON-SITE NATURAL GAS SERVICE WITH THE CITY OF PORTLAND. COORDINATE WITH THE PORTLAND DEPARTMENT OF PUBLIC SERVICES, PORTLAND PUBLIC SERVICES CONTACT: DAVID MARGOLIS-PNEO. (207) 874-8890.
17. ALL WORK WITHIN THE STREET RIGHT-OF-WAY SHALL MEET CITY OF PORTLAND STANDARDS.
18. ROOF RUNOFF AND FOUNDATION DRAINAGE FROM THE EXISTING BUILDING SHALL BE DISCHARGED IN A SEPARATED DRAIN AND COMBINED WITH THE SANITARY DRAIN AT THE CURB LINE OF HIGH STREET BEFORE DISCHARGE TO THE COMBINED SEWER.

LIGHTING SCHEDULE

KEY	QTY	MANUFACTURER	DESCRIPTION
AA	3	KIM LIGHTING	LOW LEVEL FLOOD LIGHT: LLF-50/HF512D/BL
CB	2	KIM LIGHTING	COMPACT BOLLARD: CB32/20L5KUV/BL
CC	6	KIM LIGHTING	42" BOLLARD: VRB3/20L5KUV/BL

REFER TO ELECTRICAL ENGINEERING PLANS FOR LIGHTING SCHEDULE AND FIXTURE ORDERING INFORMATION.



Prepared For:

Children's Hospital
Housing Partners, LP
309 Cumberland Avenue
Portland, Maine 04101

Prepared By:

MITCHELL & ASSOCIATES
Landscape Architects
100 Commercial Street
70 Center Street
Portland, Maine 04101
Tel: (207) 774-4427

ELM TERRACE

68 High Street
Portland, Maine

Date: SEPTEMBER 8, 2011

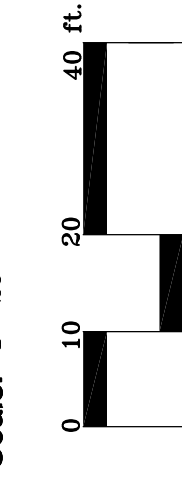
Issued For: SEPTEMBER 8, 2011

Revisions:

Reproduction or reuse of this document without the express written permission of Mitchell & Associates is prohibited.

Title: LIGHTING AND UTILITIES PLAN

Scale: 1"=20'



North:

Sheet No: 4



ISSUED FOR SEPTEMBER 8, 2011

N/F
JUDITH KELLY GIBSON
TM 44 BLOCK F LOT 2
7845/84

N/F
THOMAS F. & MARY F. CONNEEN
TM 44 BLOCK F LOT 3

N/F
TOWN FARM
TOWN HOUSE CONDOMINIUM
TM 44 BLOCK F LOT 5