

KEY NOTE LEGEND

RR - Rake out & Re-point: Rake out all joints to a minimum depth of 1" minimum as per masonry repair manual. Remove loose mortar and debris. Re-point joints in limestone and brick with a proportionally mixed by weight Type "O" pointing mortar, color, texture, and joint profile to match approved mock-up sample by Building Envelope Consultants. Remove residual mortar from adjacent material immediately. Mortar must cure a minimum of 7 days prior to washing. Wash masonry with a 1:4:1 mixture of 600 Detergent by Prosovo or approved equal.
 (Note: Areas and quantities indicated on the drawings are approximate. Masonry contractor to carry quantities and square footages sufficient to complete the indicated task.)

RB - Rebuild: Coordinate all rebuilding activities with contractor prior to starting. Disassemble back to solid masonry, and remove all loose debris. Unless noted otherwise, assume all repair areas to be 4 wythes thick. If previously undecombed embedded steel is found, contact Building Envelope Consultants immediately for consultation. Rebuild areas with clean existing brick or approved new brick. Contractor to follow adjacent brick coursing as guide. Set masonry with proportionally mixed by weight Type "N" setting mortar. Point masonry with a proportionally mixed by weight Type "O" setting mortar. Remove residual mortar from adjacent material immediately. Mortar must cure a minimum of 7 days prior to washing. Wash masonry with a 1:4:1 mixture of 600 Detergent by Prosovo or approved equal.
 (Note: Areas and quantities indicated on the drawings are approximate. Masonry contractor to carry quantities and square footages sufficient to complete the indicated task.)

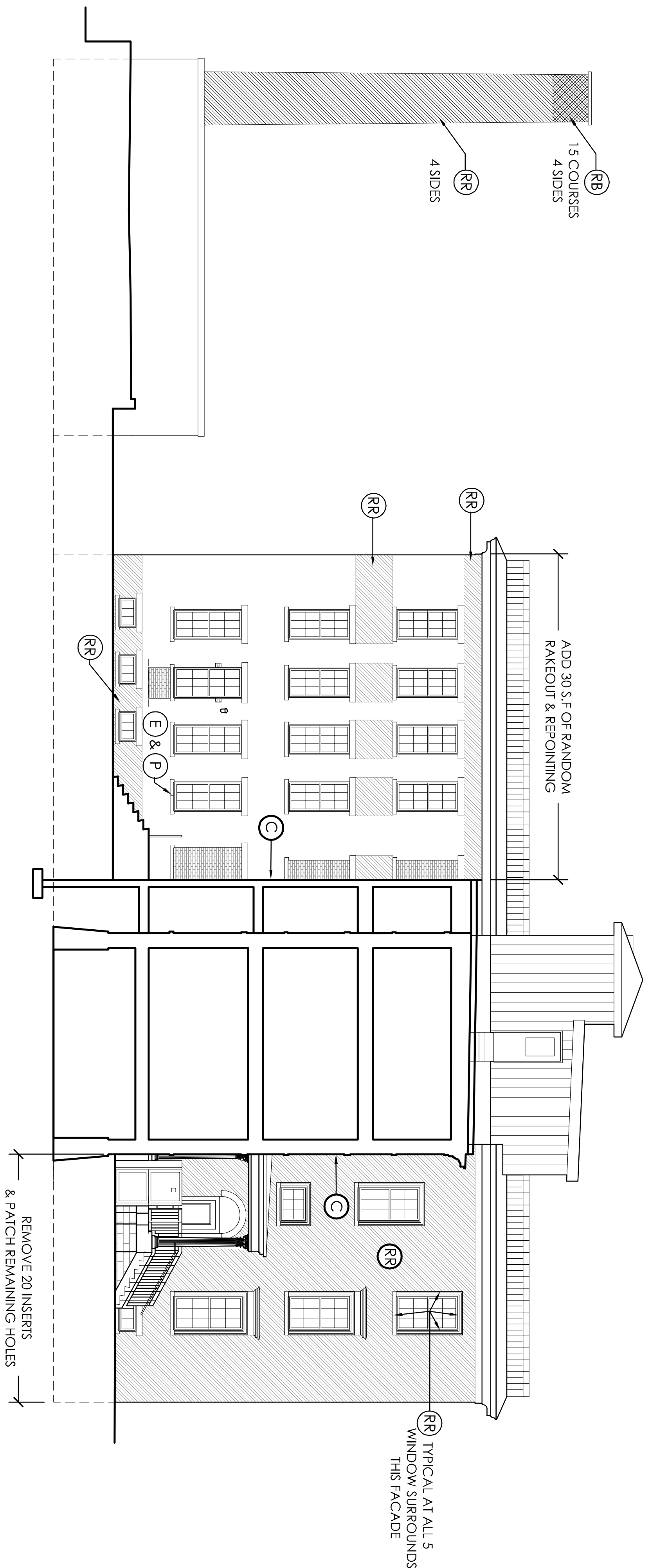
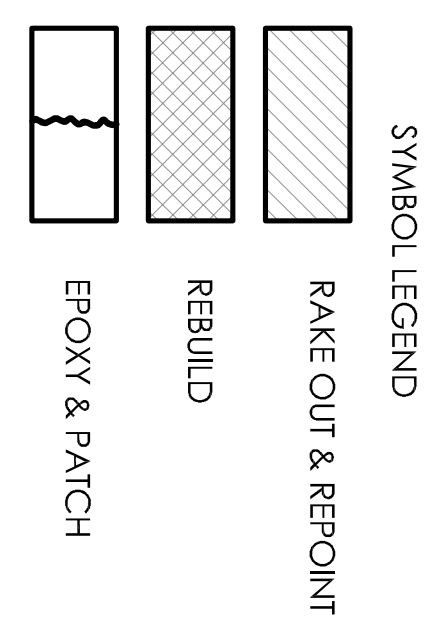
EP - Epoxy: Infill existing crack in limestone with M30 or M40 Micro Crack Injection Grout by Cathedral Stone Products of Hanover, Maryland, or approved equal. Follow manufacturers instructions for installation procedures.

P - Patch: Patch deteriorated areas of Limestone (John M70) or brick (John M100) with a custom color mix of Restoration Mortars by Cathedral Stone Products of Hanover, Maryland, or approved equal. All certificates of licensed installers must be filed with Building Envelope Consultants prior to the beginning of work. Follow manufacturers instructions for installation procedures.

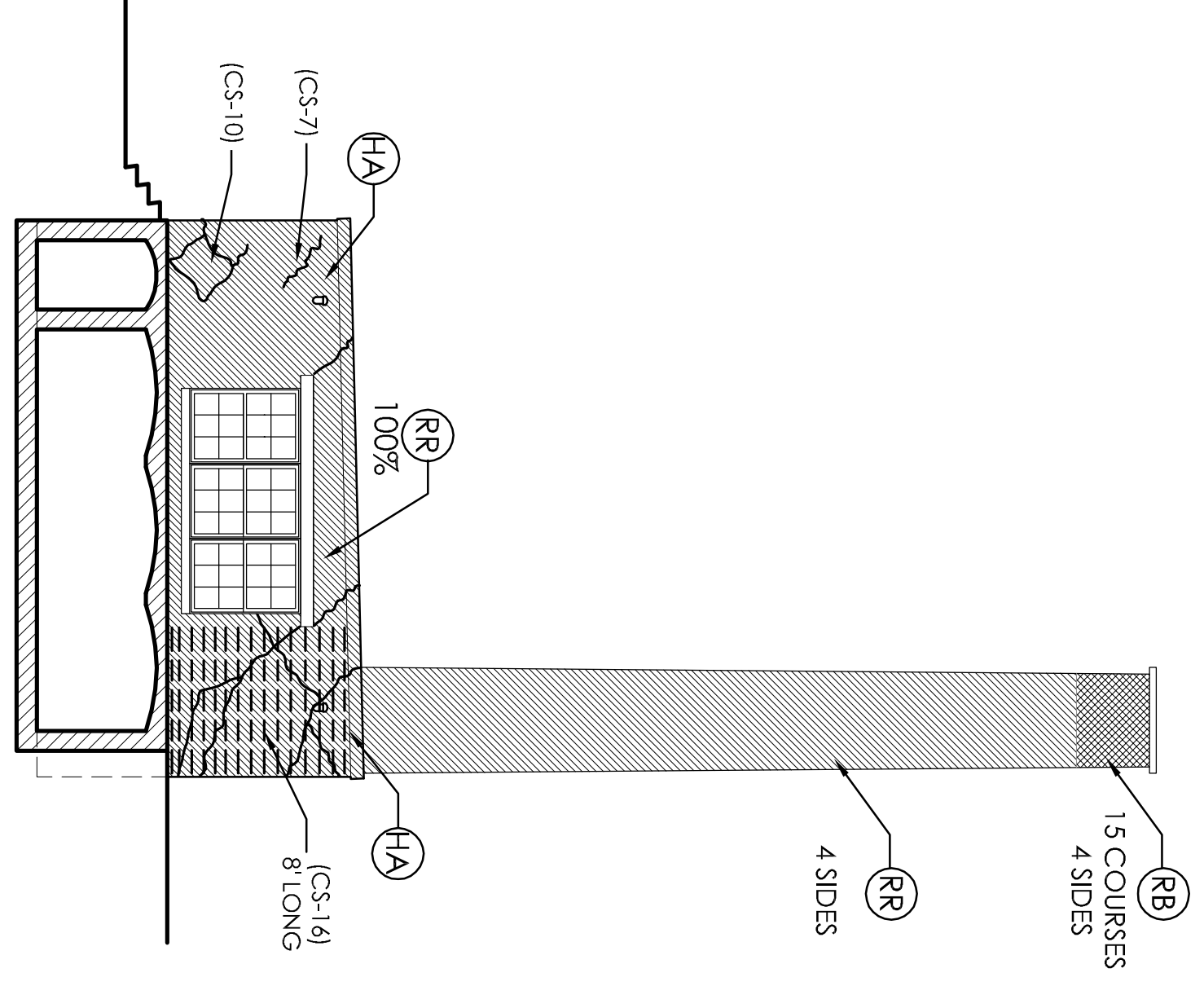
CS - Crack Stitch: Crack stitch across vertical openings in brick veneer. Install 4mm, stainless steel anchors by Helix Corp. or approved equal. The digit in the keynote symbol represents the number of helical anchors needed to stitch over the opening per the length of the separation. Place stitching anchors at every 3rd masonry course.

C - Caulk: Remove existing mortar at inside building corners. Insert a closed cell foam backer rod by Sarnel manufacturing company into open cavity. Finish joints with Vulkem 116 Polyurethane Sealant by Tremco. Sand caulking surface to blend. Color to be specified by Building Envelope Consultants.

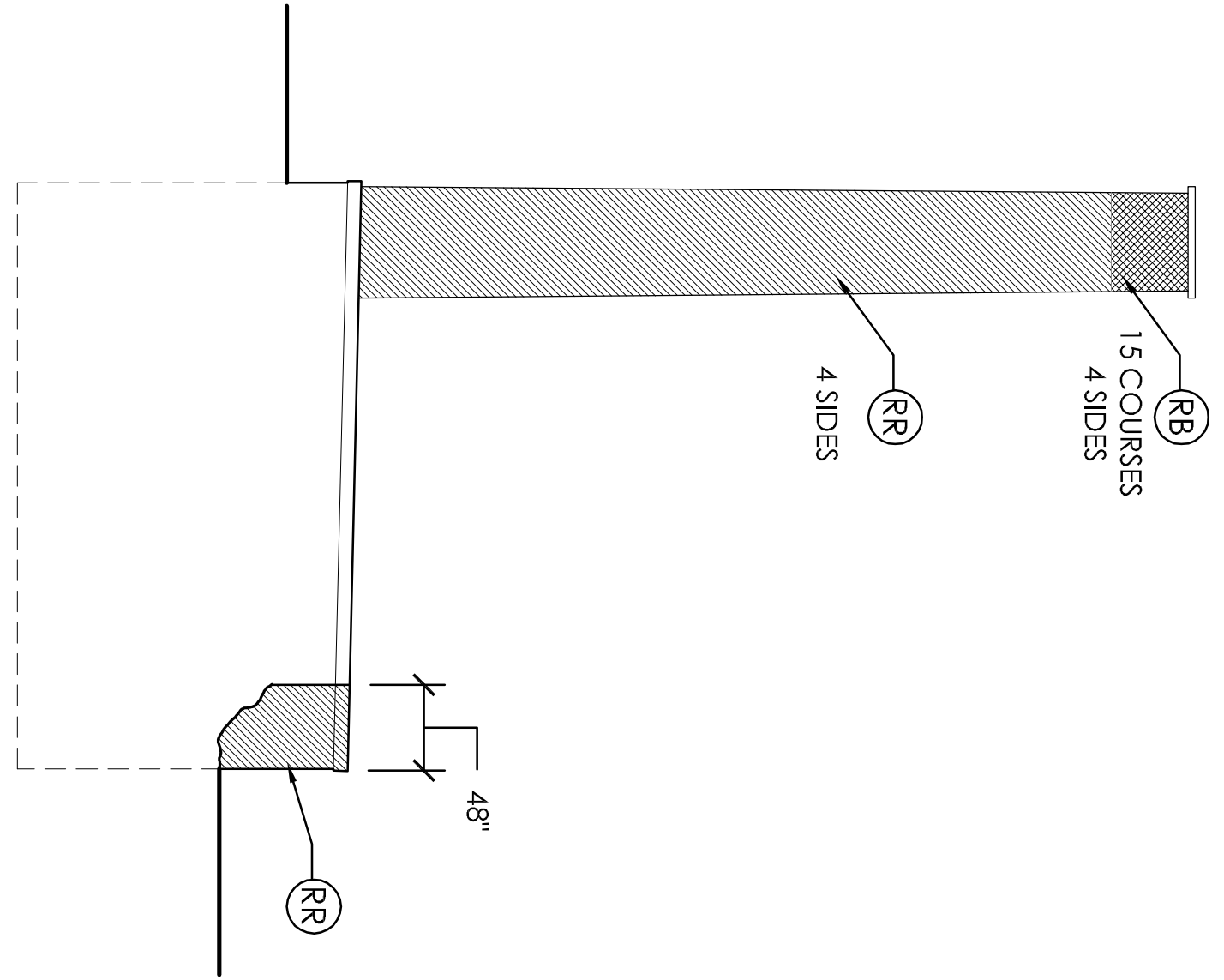
HA - Helical Anchor: Secure brick wythes together with helical anchors. Install 6mm x 8" long, stainless steel anchors by Helix Corp. or approved equal in a 24" square install pattern across face of elevation. See manufacturer details for specific installation instructions.



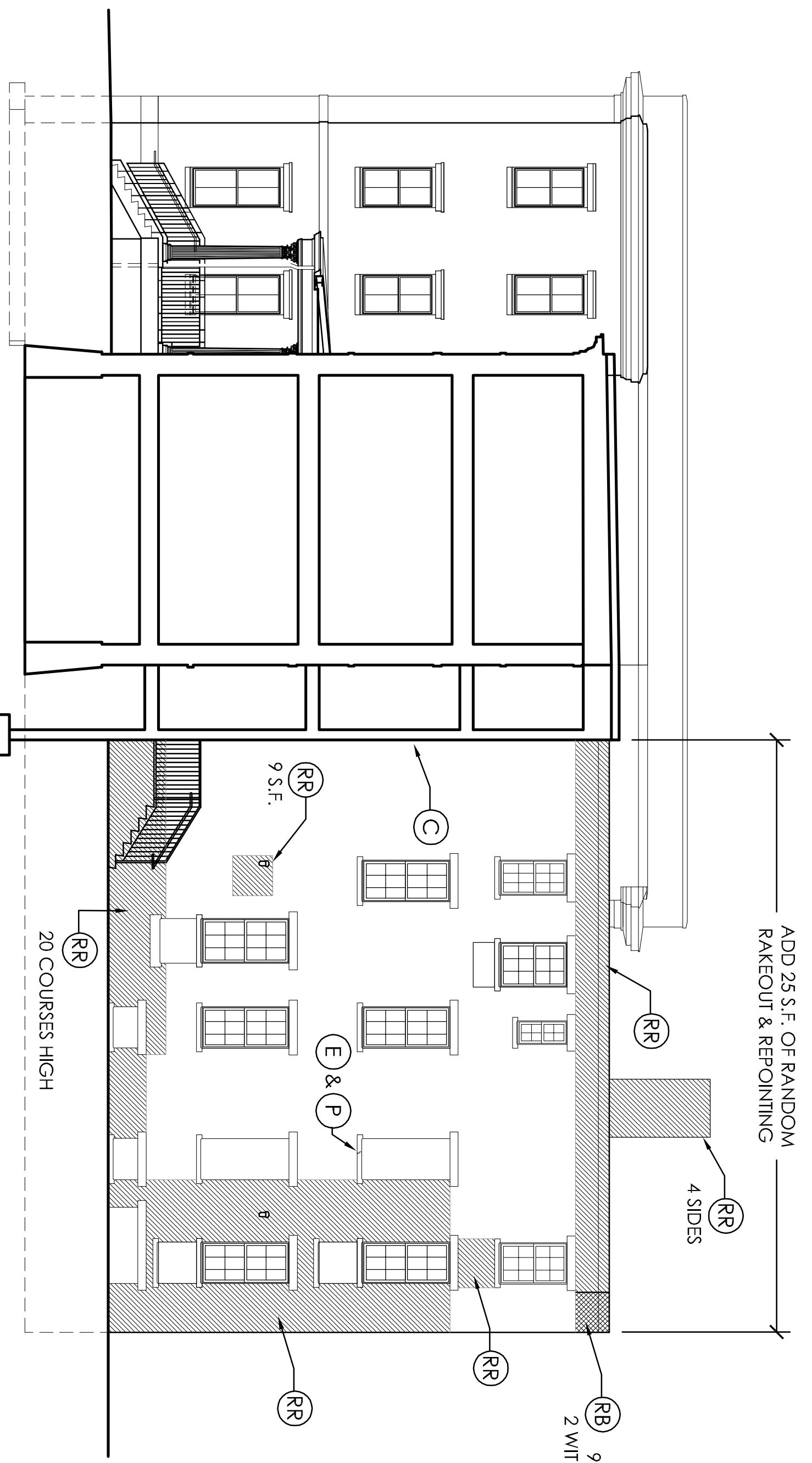
A COURTYARD ELEVATION/SECTION - SOUTH
 ER-3 SCALE: 1/8" = 1'-0"



B BOILER HOUSE ELEVATION/SECTION - EAST
 ER-3 SCALE: 1/8" = 1'-0"



C BOILER HOUSE ELEVATION - WEST
 ER-3 SCALE: 1/8" = 1'-0"



D COURTYARD ELEVATION/SECTION - NORTH
 ER-3 SCALE: 1/8" = 1'-0"

Building Envelope Consultants raised seal represents that the drawings or planning documents have been approved for construction by the Building Envelope Consultants in accordance with the International Building Code and Industry Standards for detailing and represent an intended concept.

Elm Terrace - Portland, Maine
 Children's Hospital Housing Partners, LP
 Envelope Repair Scope



191 Sturford St.
 South Portland
 Maine 04106
 1.207.400.0086

Drawn By: TC
 Date: 9-8-11
 BID SFT

#	REVISIONS	Description/Date

ER-3

Sheet Number

Issued: 9-8-11

Project No.: 028-11