

Building Envelope Consultants raised seal represents that the drawings or planning documents have been approved for construction by the Building Standards Commission in accordance with the Building Standards Code. The drawings conform to industry standards for detailing and represent an intended concept.

Elm Terrace - Portland, Maine
Children's Hospital Housing Partners, LP
Envelope Repair Scope



191 Starford St.
South Portland
Maine 04106
1.207.400.0086
Drawn By: TC
Date: 9-8-11
BID SRT

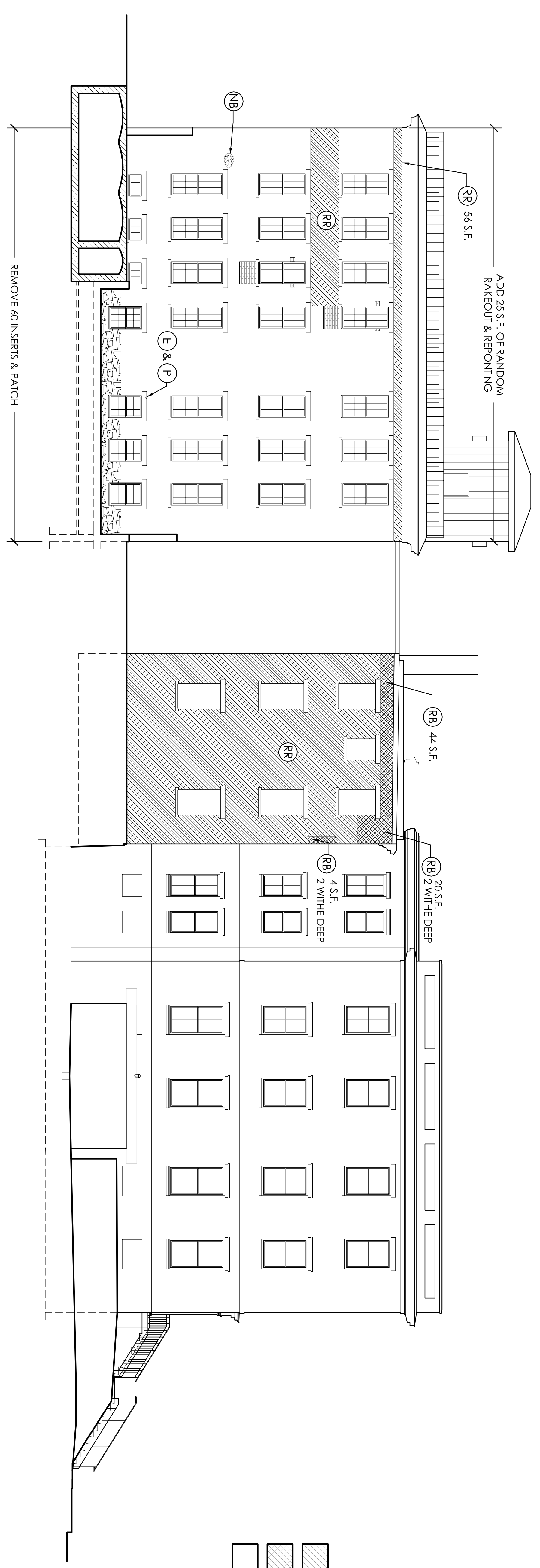
#	REVISIONS	Description/Date

SYMBOL LEGEND

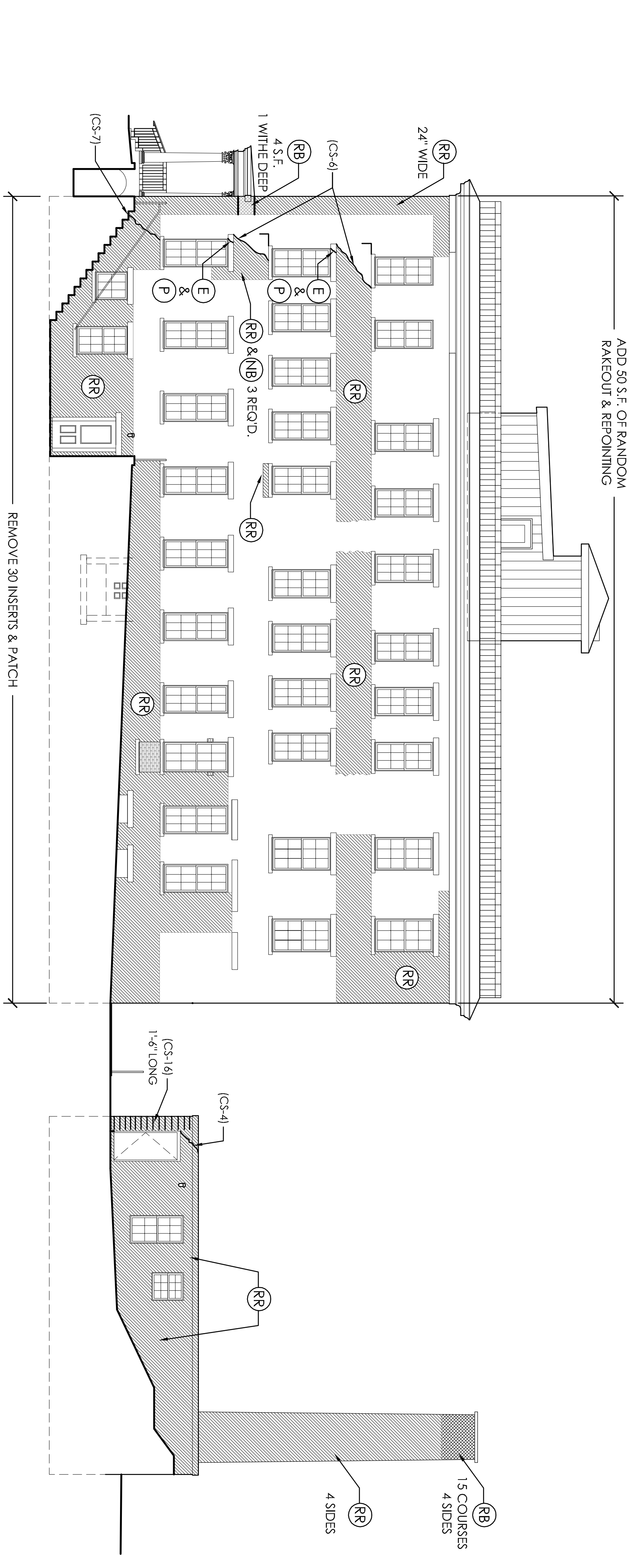
	RAKE OUT & REPOINT
	REBUILD
	EPOXY & PATCH

KEY NOTE LEGEND

- RR- Rake out & Re-point:** Rake out all joints to a minimum depth of 1" minimum as per masonry restoration standards. Over-cutting and widened joints will not be acceptable and will be grounds for dismissal. Re-point joints in limestone and brick with a proportionally mixed by weight Type "O" pointing mortar; color, texture, and joint profile to match approved mock-up sample by Building Envelope Consultants. Remove residual mortar from adjacent material immediately. Mortar must cure a minimum of 7 days prior to washing. Wash masonry with a 14:1 mixture of 600 detergent by Prosoco or approved equal.
- (Note: Areas and quantities indicated on the drawings are approximate. Masonry contractor to carry quantities and square footages sufficient to complete the indicated tasks.)**
- RB- Rebuild:** Coordinate all rebuilding activities with contractor prior to starting. Disassemble back to be 4 courses thick. If previously undecommissioned embedded steel is found, contact Building Envelope Consultants immediately for consultation. Rebuild areas with clean existing brick or approved new brick. Contractor to follow adjacent brick coursing as guide. Set masonry with proportionally mixed by weight Type "N" setting mortar. Point masonry with a proportionally mixed by weight Type "O" pointing mortar; color, texture, and joint profile to match mock-up sample by Building Envelope Consultants. Mortar must cure a minimum of 7 days prior to washing. Wash masonry with a 14:1 mixture of 600 detergent by Prosoco or approved equal.
- (Note: Areas and quantities indicated on the drawings are approximate. Masonry contractor to carry quantities and square footages sufficient to complete the indicated tasks.)**
- NP- New Brick:** Assume all new brick areas to be 1 wythe thick. Remove damaged brick and install a new. Set masonry with proportionally mixed by weight Type "N" setting mortar. Point, texture, and joint profile to match mock-up approved by Building Envelope Consultants. Remove residual mortar from adjacent material immediately. Mortar must cure a minimum of 7 days prior to washing. Wash masonry with a 14:1 mixture of 600 detergent by Prosoco or approved equal.
- (Note: Areas and quantities indicated on the drawings are approximate. Masonry contractor to carry quantities and square footages sufficient to complete the indicated tasks.)**
- E- Epoxy:** Fill existing crack in limestone with M30 or M40 Micro Crack Injection from by Instalock or other products of Harnier, Harjand, or approved equal. Follow manufacturers instructions for installation procedures.
- P- Patch:** Patch deteriorated areas of limestone (Jahn 872) or brick (Jahn 8100) with a custom material of same products of Harnier, Harjand, or approved equal. Follow manufacturers instructions for installation procedures.
- CS- Crack Shield:** Crack seals across vertical openings in brick veneer; install 4mm stainless steel anchors by Helix Corp. or approved equal. The light in the keynote symbol represents the number of helical anchors needed to match or the opening per the length of the separation. Place stitching anchors at every 3rd masonry course.
- C- Caulk:** Remove existing mortar at inside building corners. Insert a closed cell foam backer rod by Sundell manufacturing Company into open cavity. Finish joints with Vulkem 116 Polyurethane Sealant by Tremco. Sand caulking surface to blend. Color to be specified by Building Envelope Consultants.
- HA- Helical Anchors:** Secure brick wythes together with helical anchors; install 6mm x 8" long stainless steel anchors by Helix Corp. or approved equal in a 24" square mesh pattern across face of elevation. See manufacturer details for specific installation instructions.



A ELEVATION - WEST
ER-2 SCALE: 1/8" = 1'-0"



B ELEVATION - NORTH
ER-2 SCALE: 1/8" = 1'-0"