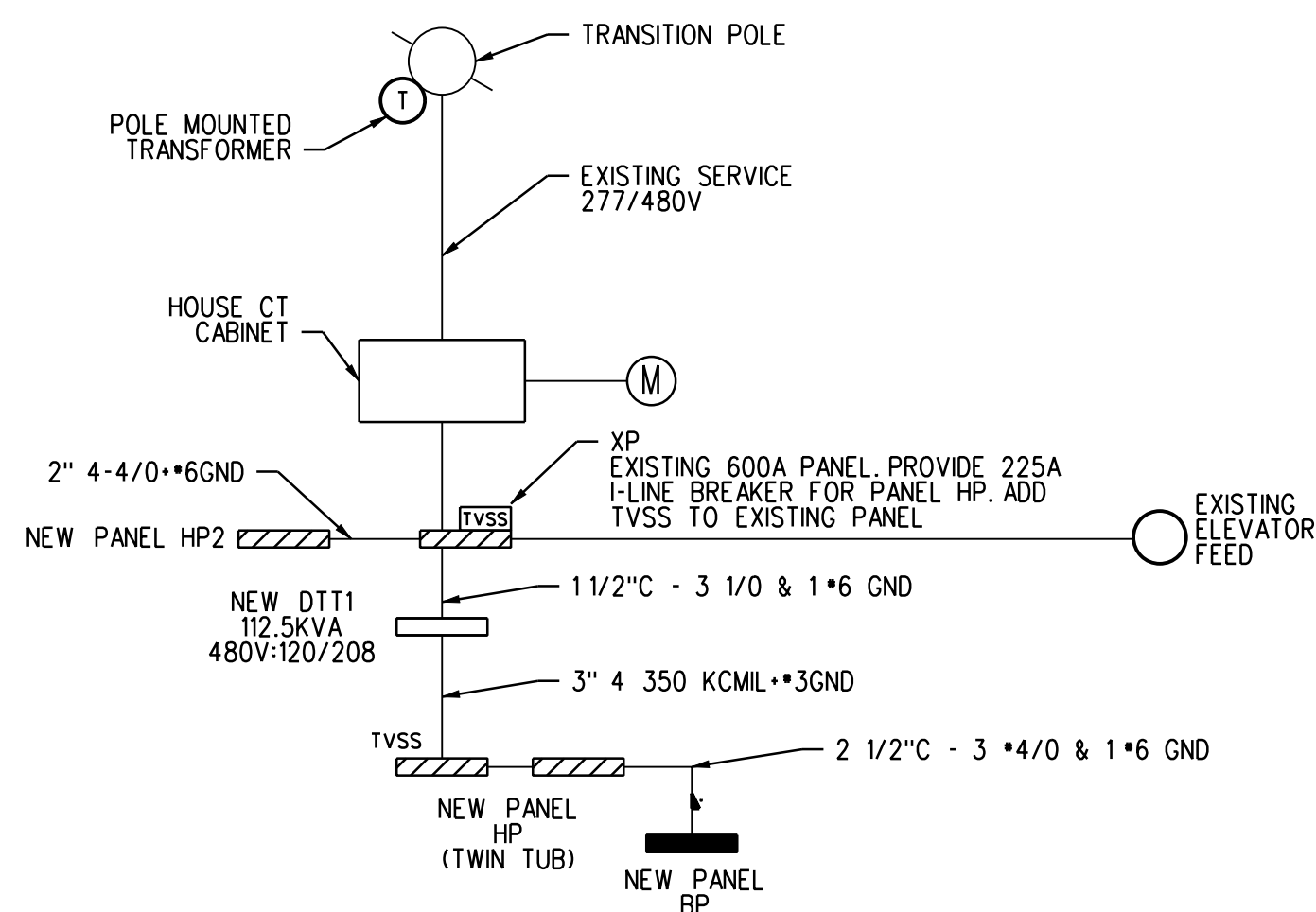


LIGHTING FIXTURE SCHEDULE

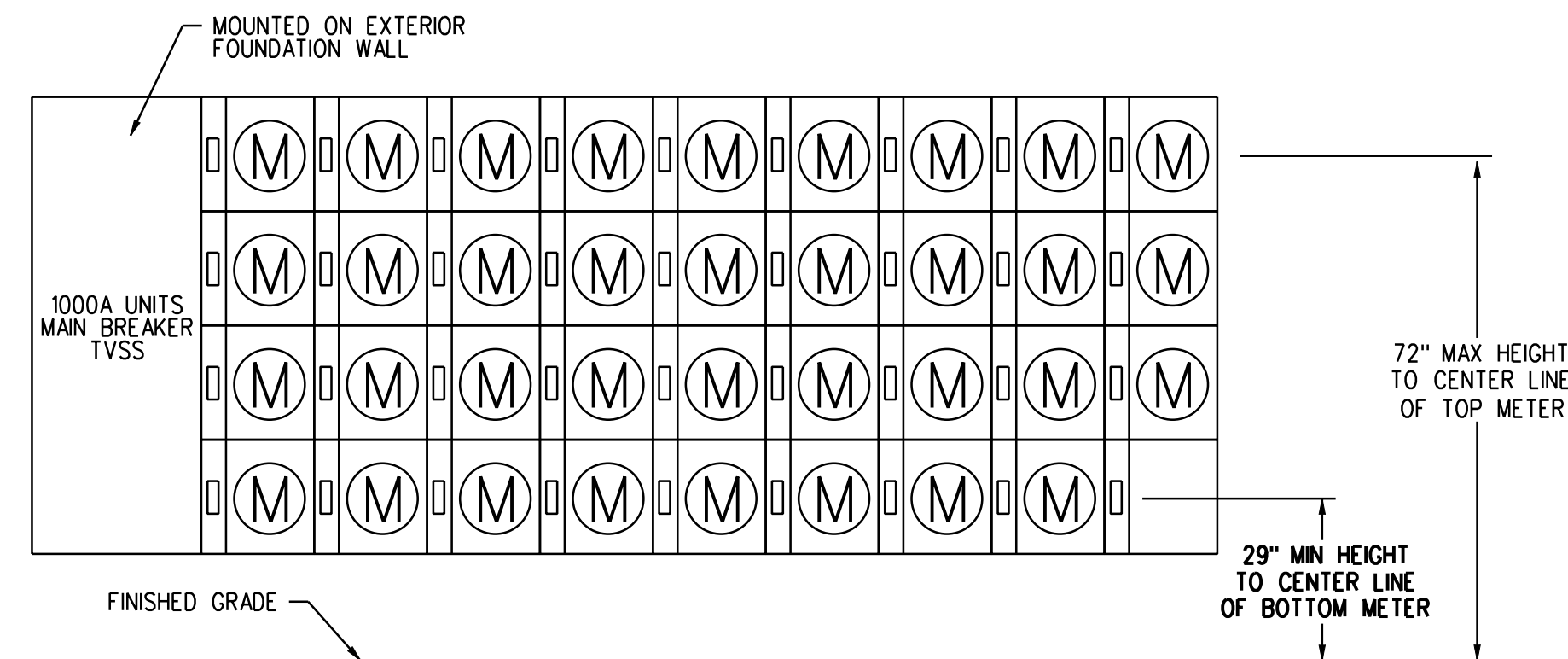
TYPE	DESCRIPTION	LAMPS QUANTITY & TYPE	REMARKS
A	REJUVENATION - IRVING A4764 CHANDELIER	(3) 13W (GLOBE TYPE) CFL	OLD BRASS W/ 7" OPAL SHADE (B4972). CUSTOMIZE STEM TO REMOVE THE BALL AND SHORTEN STEM. THE OVERALL HEIGHT SHALL BE 21"
B	PRESCOLITE CFB28HEB STF802H WT B6 120V	(1) 26W 4-PIN CFL	8" DOWNLIGHT WITH HORIZONTAL LAMPING, WHITE TRIM ELECTRONIC BALLAST, 24" BARHANGER FOR T-BAR CEILING
C	ROYCE *RSF47ES/3-46	(1) 32W 3500 CFL	ONE LIGHT SEMIFLUSH 15 1/4" DIA x 12" HIGH
D	SEA GULL *3906IBLE-782 HEIRLOOM BRONZE	(3) 13W GU24 (INCLUDED)	THREE LIGHT CHANDELIER WITH SATIN ETCHED SHADES
E	COLUMBIA *UC-24-117-EU	(1) F17T8/SPX35	2" UNDERCABINET IN UNITS AS INDICATED
F	ROYCE *RFM47ES/3-46 HEIRLOOM BRONZE	(1) 40W 2C GIOq CIRCLINE FLUOR.	16 1/4" DIA x 6" HIGH WITH CREAM SNOW GLASS
G	ROYCE *RV47ES/3-46 HEIRLOOM BRONZE	(3) 13W GU24	VANITY LIGHT
H	REJUVENATION - UMPQUA *A7468 OLD BRASS	(1) 13W (GLOBE TYPE) CFL	6" OPAL SHADE (B4972), WALL MOUNTED IN STAIR WAY
J	ROYCE *RP47ES/1-46 MINIPENDENT, HEIRLOOM BRONZE	(1) 13W GU24 CFL (INCLUDED)	CEILING MOUNTED ABOVE SINK
K	COLUMBIA LUN 4-232-EU	(2) 28W T8	1' x 4' CEILING HUNG IN MULTIPLE AREAS
K1	COLUMBIA LUN 4-232-EU	(2) 28W T8	1' x 4' CEILING HUNG IN PARKING GARAGE WIRED FOR CONTINUOUS OPERATION. PROVIDE B50COLD-PAK BALLAST WITH EACH.
K2	COLUMBIA KL-4-232-U	(2) T8 3500K	SHIELDED INDUSTRIAL- HUNG 18" FROM CEILING IN MECHANICAL AND ELECTRICAL ROOMS
K3	COLUMBIA AD4-232-EBB 120	(2) T8 3500K	CORRIDOR LIGHT MOUNTED IN STAIRWAYS 6'-6" AFF
L	COLUMBIA LIGHTING ZPT-24-228-PRF-S -U	(2) T5 3500K	2' x 4' ZERO PLENUM RECESSED
M	COLUMBIA LIGHTING ZPT-22-224-G-PRF-S -U	(2) T5HO 3500K	2' x 2' ZERO PLENUM RECESSED
N	REJUVENATION *A5959 SINGLE POLE PENDANT	(1) 13W GU24 (GLOBE TYPE) CFL	OLD BRASS W/ 7" OPAL SHADE (B4972)
P	DUAL-LITE *LX-U-R-W-E	LED'S FURNISHED W/ UNIT	SINGLE/DOUBLE FACE, END/CEILING/WALL MOUNT
Q	REFER TO SITE PLAN FOR DESCRIPTION		
R	PROGRESS *4020 (120V)	(1) 75W A19	ELEVATOR PIT
S	COLUMBIA COVE LIGHTING... NUMBER TO FOLLOW		SEE DRAWING E2.1 FOR MOUNTING INSTRUCTIONS

ALL LIGHTING FIXTURES SHALL BE ENERGY STAR RATED OR HAVE HIGH PERFORMANCE T8 BALLAST AND LAMPS TO MEET EFFICIENCY MAINE CRITERIA. PROVIDE INSTANT START BALLASTS FOR SWITCHED OPERATION. MINIMUM BALLAST FACTOR 1.0



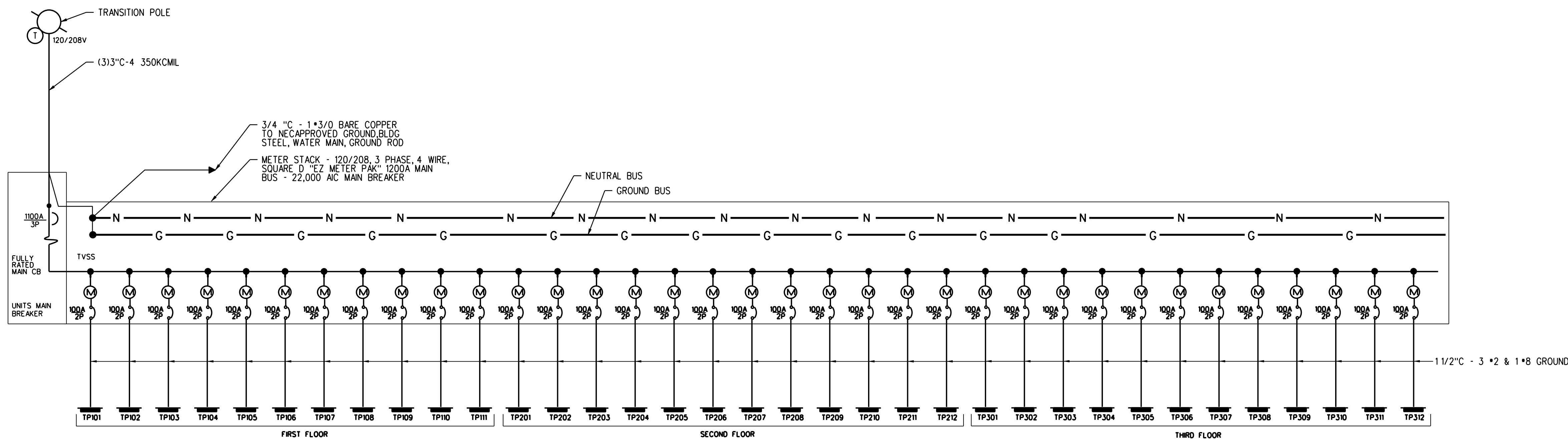
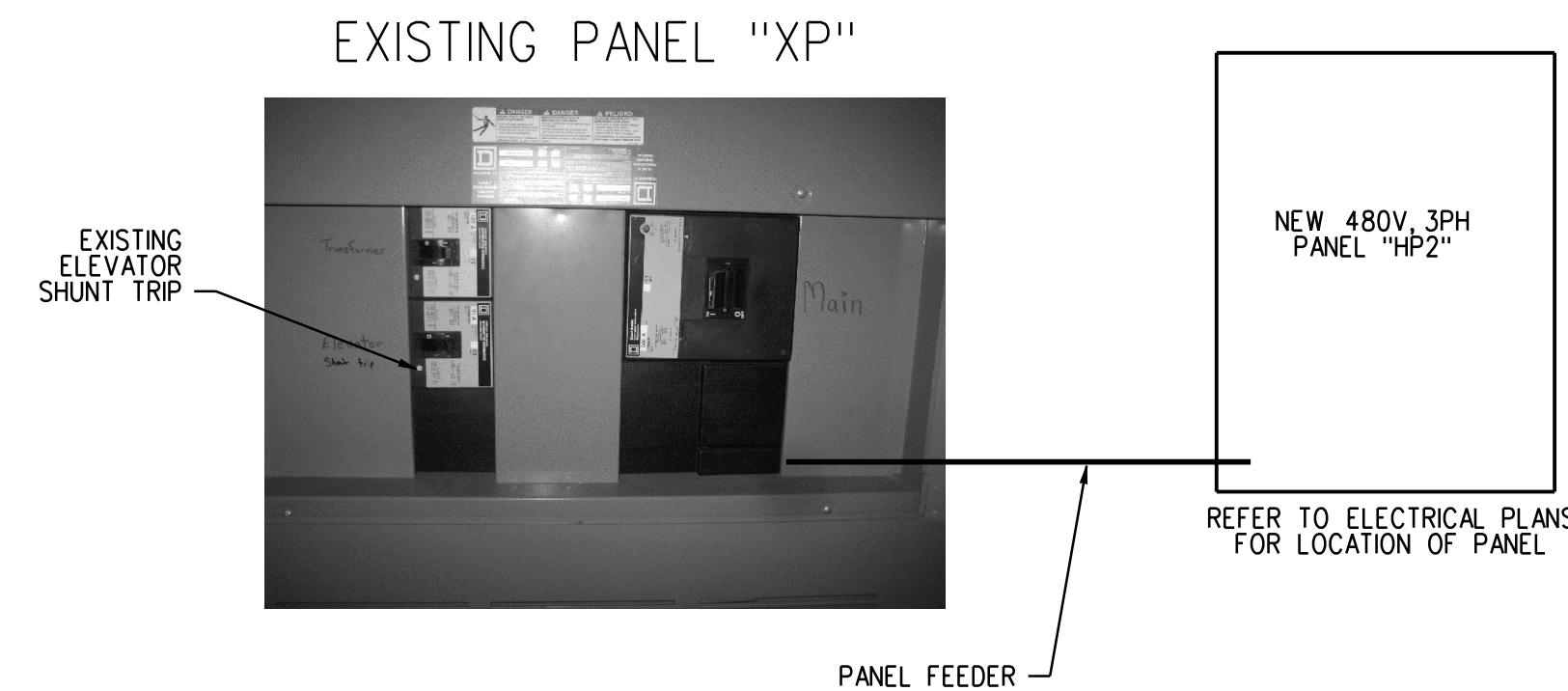
ONE LINE DIAGRAM - HOUSE LOADS

SCALE: NONE  
 SERVICE NOTES:  
 1. REMOVE EXISTING WIRING, 75KVA DRY TRANSFORMER AND CIRCUIT BREAKER FROM EXISTING PANEL SQUARE D I-LINE PANEL XP.  
 2. INSTALL NEW 135 AMP (I-LINE) CIRCUIT BREAKER IN PANEL XP, NEW 112.5 KVA DRY FEEDERS AS SHOWN ON ONE-LINE.  
 3. PROVIDE IDENTIFICATION FOR THE TWO SERVICES AS REQUIRED BY NFPA70, 230.2.E.



METER STACK ELEVATION - (35 METERS)

SCALE: NONE



ONE LINE DIAGRAM - UNITS

SCALE: NONE

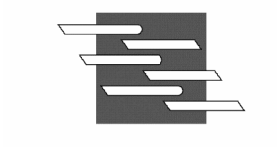
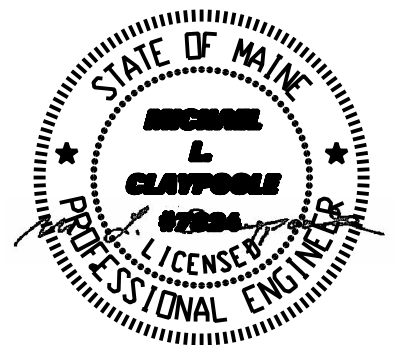


CWS Architects

Architecture  
 Space Planning  
 Value Design

434 Cumberland Avenue  
 Portland, ME 04101  
 Phone: (207) 774-4441  
 Fax: (207) 774-4016

www.CWSarch.com



BENNETT  
 ENGINEERING  
 MECHANICAL-ELECTRICAL  
 (207) 865-9475

Owner:

Children's  
 Hospital Housing  
 Partners, LP  
 309 Cumberland Ave.  
 Suite 203  
 Portland, Maine 04101

CONSTRUCTION MANAGER:

WRIGHT-RYAN  
 CONSTRUCTION  
 10 DANFORTH STREET  
 PORTLAND, ME 04101  
 TEL: (207) 773-3625

ELM  
 TERRACE

68 HIGH STREET  
 PORTLAND, MAINE

Project No: 09428

Drawing Title:

SCHEDULE,  
 ONE LINE AND  
 SYMBOLS

Scale: NONE

Date: September 8, 2011

Revisions:

- △
- △
- △
- △
- △
- △

Drawing Number:

E4.0