

BENNETT ENGINEERING
MECHANICAL-ELECTRICAL
(207) 865-9475

Owner:

Children's Hospital Housing Partners, LP
309 Cumberland Ave.
Suite 203
Portland, Maine 04101

CONSTRUCTION MANAGER:

WRIGHT-RYAN CONSTRUCTION
10 DANFORTH STREET
PORTLAND, ME 04101
TEL: (207) 773-3625

ELM TERRACE

68 HIGH STREET
PORTLAND, MAINE

Project No: 09428

Drawing Title:

THIRD FLOOR LIGHTING PLAN

Scale: 1/8" = 1'-0"

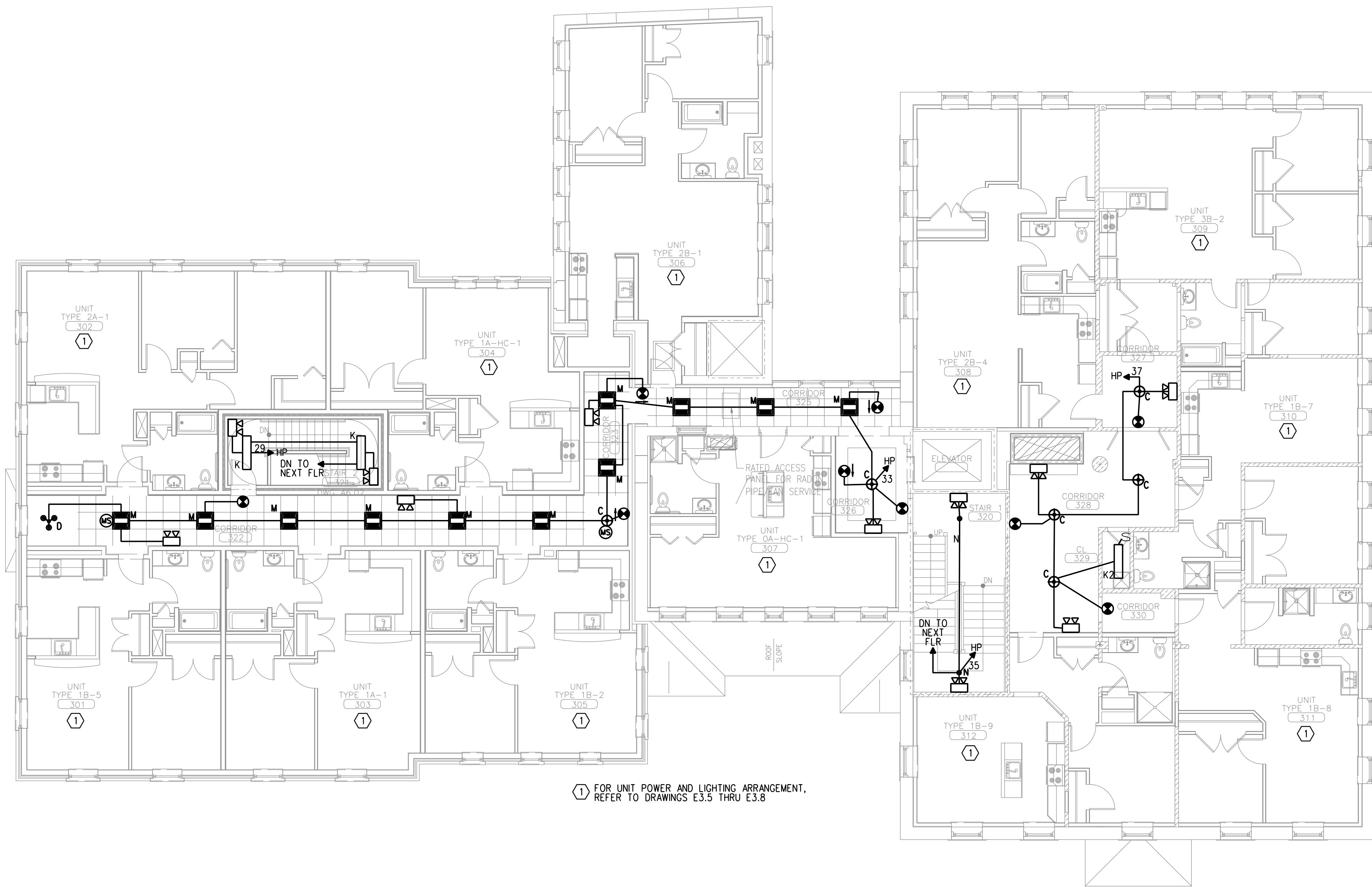
Date: September 8, 2011

Revisions:

- △
- △
- △
- △
- △
- △

Drawing Number:

E2.3



ELECTRICAL DEMOLITION NOTES:

UNLESS NOTED OTHERWISE ON THE ELECTRICAL DRAWINGS, ALL ELECTRICAL SYSTEMS (INTERIOR AND EXTERIOR), INCLUDING BUT NOT LIMITED TO PANELS, DEVICES, CONDUIT, WIRING, FIRE ALARM CABLE, SECURITY CABLE, TELEPHONE CABLE, CATV CABLE, DATA CABLE, AND LIGHTING SHALL BE REMOVED IN THEIR ENTIRETY. EXCEPTIONS - EXISTING 480V, 3PH SERVICE, METERING EQUIPMENT, MAIN SERVICE PANEL IN BASEMENT ELECTRICAL ROOM SHALL REMAIN. EXISTING NOTIFIER AFP-200 ADDRESSABLE FIRE ALARM PANEL SHALL BE RELOCATED AND SALVAGED. EXISTING ELEVATOR MOTOR FEEDER SHALL BE RETAINED.

