

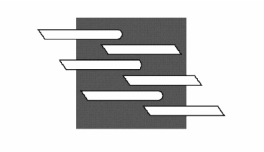
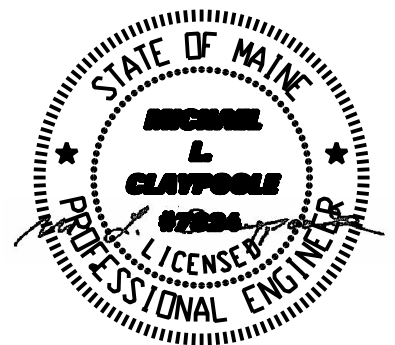


CWS Architects

Architecture
Space Planning
Value Design

434 Cumberland Avenue
Portland, ME 04101
Phone: (207)774-4441
Fax: (207)774-4016

www.CWSarch.com



**BENNETT
ENGINEERING**
MECHANICAL-ELECTRICAL
(207) 865-9475

Owner:

**Children's
Hospital Housing
Partners, LP**
309 Cumberland Ave.
Suite 203
Portland, Maine 04101

CONSTRUCTION MANAGER:

**WRIGHT-RYAN
CONSTRUCTION**
10 DANFORTH STREET
PORTLAND, ME 04101
TEL: (207) 773-3625

**ELM
TERRACE**

68 HIGH STREET
PORTLAND, MAINE

Project No: 09428

Drawing Title:

**SECOND FLOOR
LIGHTING PLAN**

Scale: 1/8" = 1'-0"

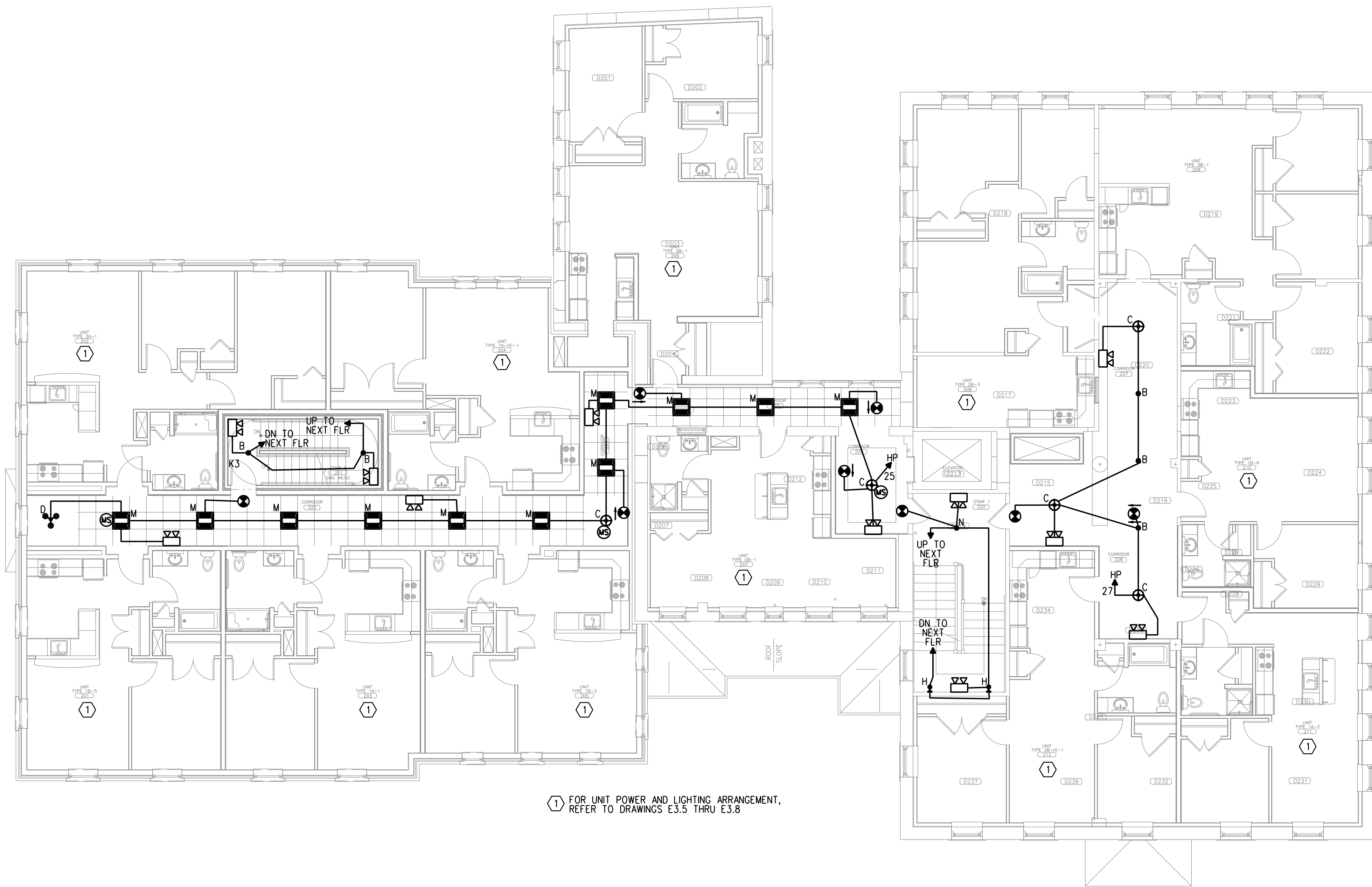
Date: September 8, 2011

Revisions:

- △
- △
- △
- △
- △
- △

Drawing Number:

E2.2



ELECTRICAL DEMOLITION NOTES:

UNLESS NOTED OTHERWISE ON THE ELECTRICAL DRAWINGS, ALL ELECTRICAL SYSTEMS (INTERIOR AND EXTERIOR) INCLUDING BUT NOT LIMITED TO PANELS, DEVICES, CONDUIT, WIRING, FIRE ALARM CABLE, SECURITY CABLE, TELEPHONE CABLE, CATV CABLE, DATA CABLE, AND LIGHTING SHALL BE REMOVED IN THEIR ENTIRETY. EXCEPTIONS - EXISTING 480V, 3PH SERVICE, METERING EQUIPMENT, MAIN SERVICE PANEL IN BASEMENT ELECTRICAL ROOM SHALL REMAIN. EXISTING NOTIFIER AFP-200 ADDRESSABLE FIRE ALARM PANEL SHALL BE RELOCATED AND SALVAGED. EXISTING ELEVATOR MOTOR FEEDER SHALL BE RETAINED.

1 SECOND FLOOR LIGHTING PLAN



SCALE: 1/8" = 1'-0"