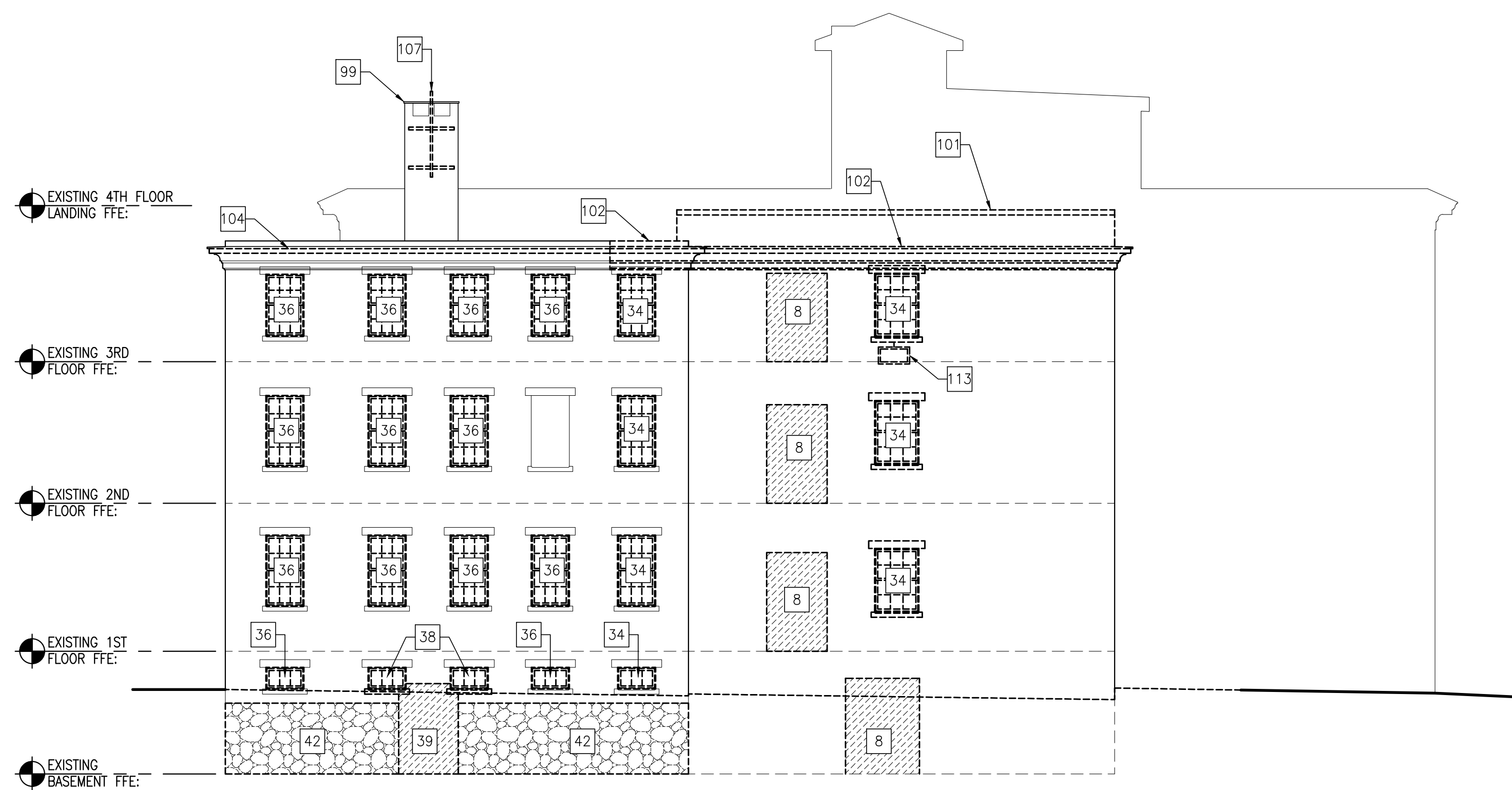




1 BUILDING ELEVATION- REMOVALS - HIGH STREET

SCALE: 1/8"=1'-0"



5 BUILDING ELEVATION - REMOVALS - DANFORTH STREET

SCALE: 1/8"=1'-0"

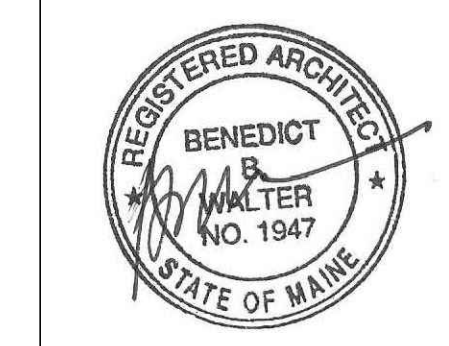


CWS Architects

Architecture
Space Planning
Value Design

434 Cumberland Avenue
Portland, ME 04101
Phone: (207)774-4441
Fax: (207)774-4016

www.CWSarch.com



Owner:

Children's Hospital Housing Partners, LP

309 Cumberland Ave.
Suite 203
Portland, Maine 04101

CONSTRUCTION MANAGER:

WRIGHT-RYAN CONSTRUCTION

10 DANFORTH STREET
PORTLAND, ME 04101
TEL: (201) 773-3625

ELM TERRACE

68 HIGH STREET
PORTLAND, MAINE

Project No: 09428

Drawing Title:

BUILDING ELEVATIONS - REMOVALS

Scale: AS NOTED

Date: ISSUED SEPTEMBER 8, 2011

Revisions:

- △ MAINE HOUSING CONCEPT SUBMISSION 02-01-2011
- △ HISTORIC PRESERVATION SUBMISSION 03-23-2011
- △ 50% MAINEHOUSING REVIEW 04-01-2011
- △ 90% MAINEHOUSING REVIEW 06-03-2011
- △ NPS SUBMISSION 07-01-2011
- △ ISSUED SEPTEMBER 8, 2011

Drawing Number:

D3.01