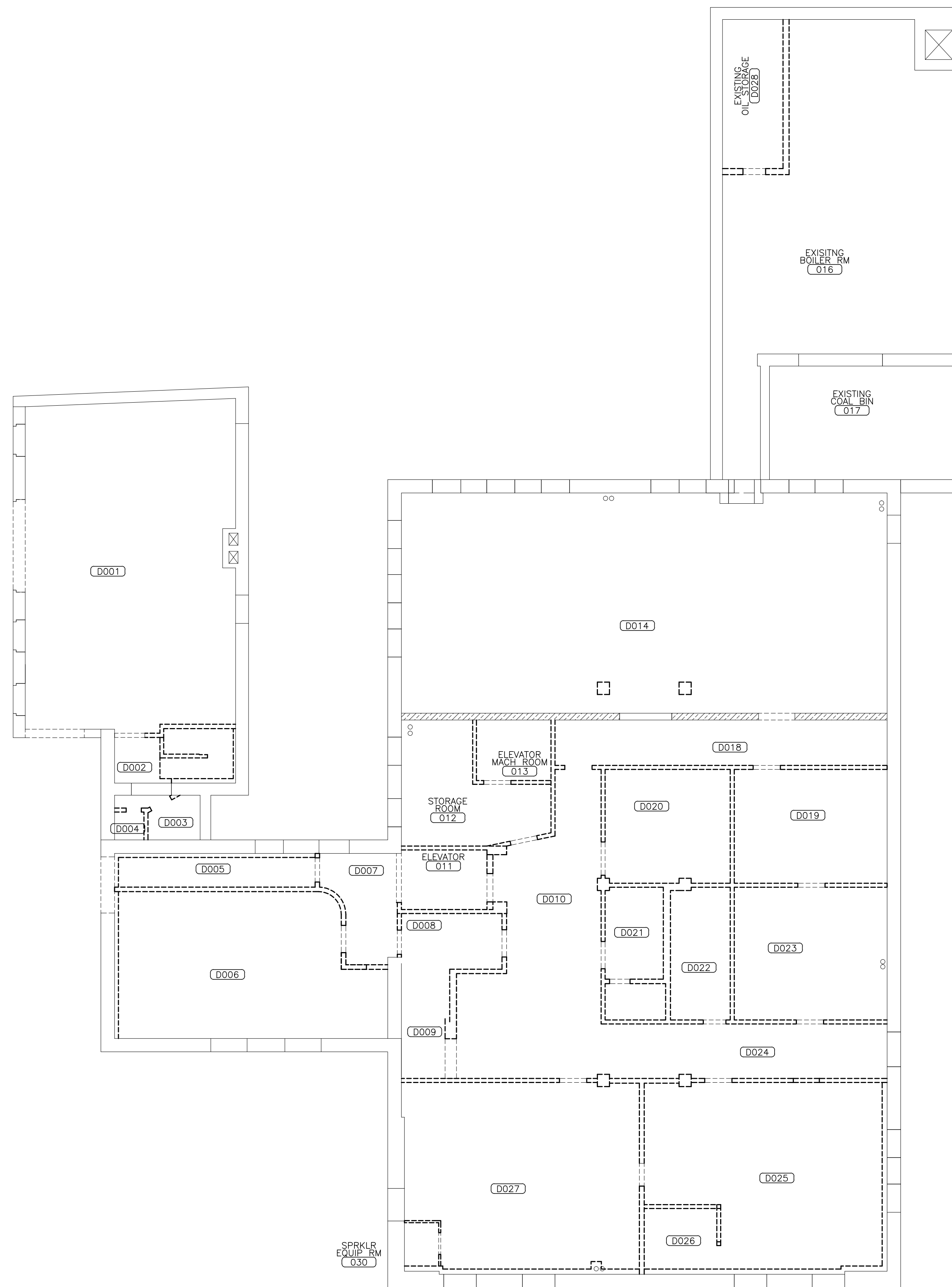


1  
D3.02

5  
D3.01

1  
D3.01

5  
D3.02

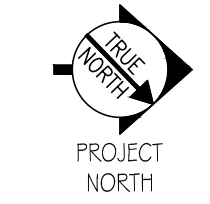


BEAM	DECK
8'-7"±	9'-6"±

TYPICAL CEILING HEIGHTS FOR THE BASEMENT UNLESS OTHERWISE NOTED.

EXISTING CEILING HEIGHT FINISHES INDICATED ARE APPROXIMATE AND ARE BASED UPON LIMITED SITE VERIFICATION. CONTRACTOR IS TO VERIFY ALL EXISTING DIMENSIONS AND CONDITIONS.

REFERENCE D0.01 DRAWING FOR ALL REMOVAL NOTES. DEMOLITION ROOM NUMBERS ARE FOR DEMOLITION INFORMATION ONLY AND SHALL NOT BE USED FOR CONSTRUCTION PURPOSES.



**WALL PARTITION LEGEND**

- = EXISTING WALL/PARTITION ASSEMBLY TO REMAIN
- = EXISTING HISTORICAL SIGNIFICANT WALL/PARTITION ASSEMBLY TO REMAIN AS IS.
  - ANY WORK IMPACTING THESE WALLS/PARTITIONS MUST BE AUTHORIZED BY OWNER/ARCHITECT AND HISTORICAL REVIEW TEAM
- - - = EXISTING WALL/PARTITION TO BE REMOVED.
  - OTHER DASHED ITEMS WITHIN REMOVALS PLANS ARE ALSO TO BE REMOVED.
  - REFERENCE REMOVAL PLANS AND NOTES.
- = NEW WALL/PARTITION ASSEMBLY.
  - REFERENCE PARTITION SCHEDULE
- = INDICATES FIRE RATED WALL/PARTITION ASSEMBLY.
  - REFERENCE PARTITION SCHEDULE

SCALE: 1/8" = 1'-0"

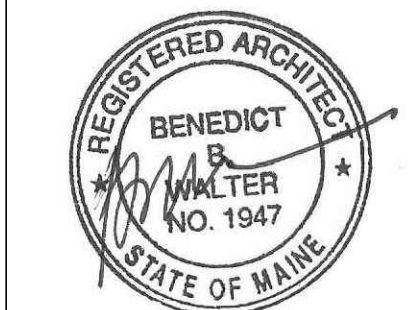


CWS Architects

Architecture  
Space Planning  
Value Design

434 Cumberland Avenue  
Portland, ME 04101  
Phone: (207)774-4441  
Fax: (207)774-4016

www.CWSarch.com



Owner:  
**Children's Hospital Housing Partners, LP**  
309 Cumberland Ave.  
Suite 203  
Portland, Maine 04101

CONSTRUCTION MANAGER:  
**WRIGHT-RYAN CONSTRUCTION**  
10 DANFORTH STREET  
PORTLAND, ME 04101  
TEL: (207) 773-3625

**ELM TERRACE**

68 HIGH STREET  
PORTLAND, MAINE

Project No: 09428

Drawing Title:  
**REMOVALS REFLECTED CEILING PLAN - BASEMENT**

Scale: 1/8" = 1'-0"

Date: ISSUED SEPTEMBER 8, 2011

- Revisions:
- △ MAINE HOUSING CONCEPT SUBMISSION 02-01-2011
  - △ HISTORIC PRESERVATION SUBMISSION 03-23-2011
  - △ 50% MAINEHOUSING REVIEW 04-01-2011
  - △ 90% MAINEHOUSING REVIEW 06-03-2011
  - △ NPS SUBMISSION 07-01-2011
  - △ ISSUED SEPTEMBER 8, 2011

Drawing Number:

**D2.0B**