

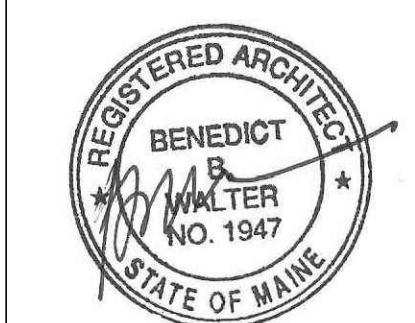


CWS Architects

Architecture
Space Planning
Value Design

434 Cumberland Avenue
Portland, ME 04101
Phone: (207)774-4441
Fax: (207)774-4016

www.CWSarch.com



Owner:

**Children's
Hospital Housing
Partners, LP**

309 Cumberland Ave.
Suite 203
Portland, Maine 04101

CONSTRUCTION MANAGER:

**WRIGHT-RYAN
CONSTRUCTION**

10 DANFORTH STREET
PORTLAND, ME 04101
TEL: (207) 773-3625

**ELM
TERRACE**

68 HIGH STREET
PORTLAND, MAINE

Project No: 09428

Drawing Title:
**REMOVALS PLAN -
BASEMENT**

Scale: 1/8" = 1'-0"

Date: ISSUED SEPTEMBER 8, 2011

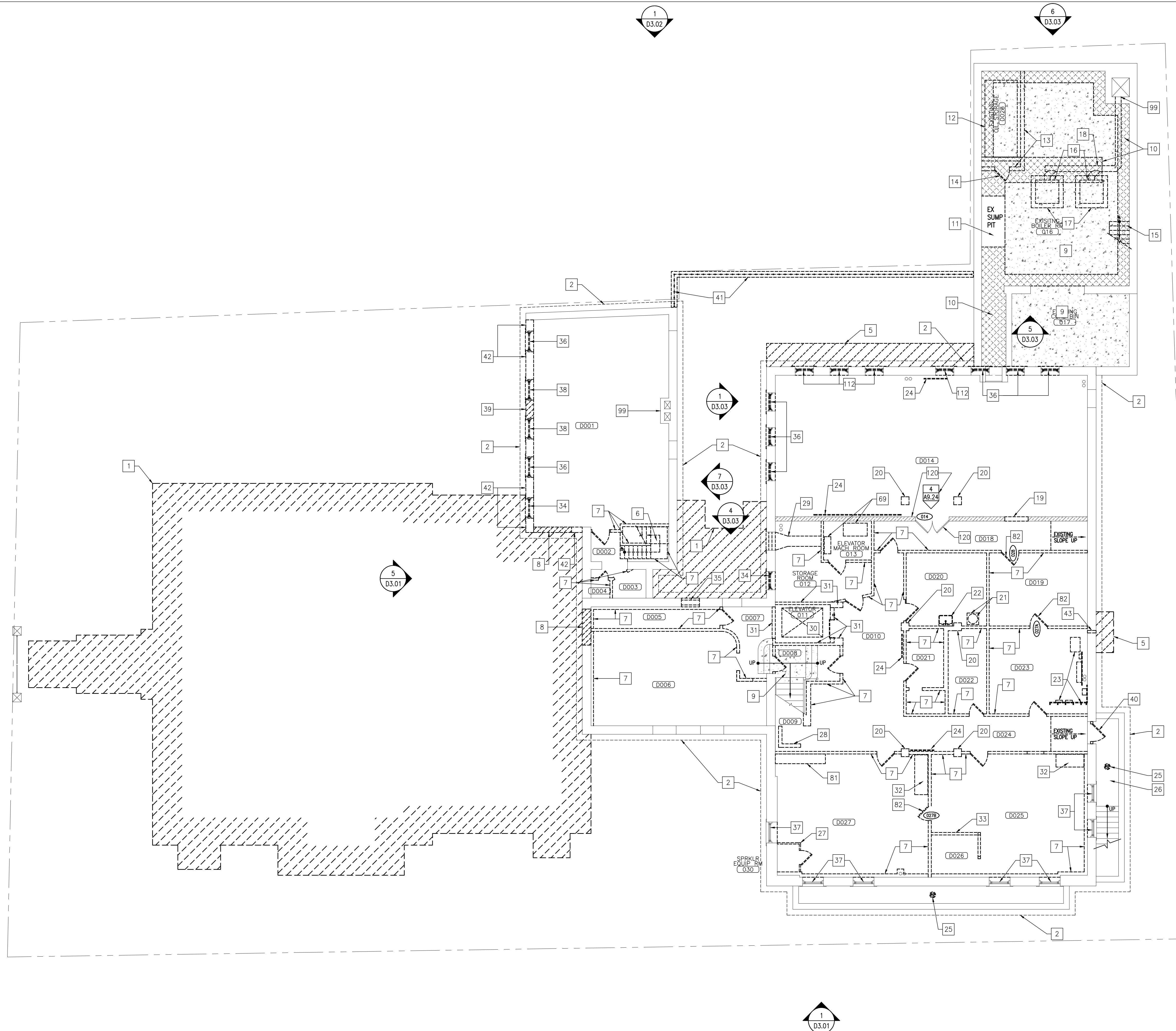
Revisions:

- △ MAINE HOUSING CONCEPT SUBMISSION 02-01-2011
- △ HISTORIC PRESERVATION SUBMISSION 03-23-2011
- △ 50% MAINEHOUSING REVIEW 04-01-2011
- △ 90% MAINEHOUSING REVIEW 06-03-2011
- △ NPS SUBMISSION 07-01-2011
- △ ISSUED SEPTEMBER 8, 2011

Drawing Number:

D1.0B

9/8/2011 10:06 PM



REFERENCE D0.01 DRAWING FOR ALL REMOVAL NOTES.
DEMOLITION ROOM NUMBERS ARE FOR DEMOLITION INFORMATION ONLY AND SHALL NOT BE USED FOR CONSTRUCTION PURPOSES.

WALL PARTITION LEGEND

- = EXISTING WALL/PARTITION ASSEMBLY TO REMAIN
- ▨ = EXISTING HISTORICAL SIGNIFICANT WALL/PARTITION ASSEMBLY TO REMAIN AS IS.
• ANY WORK IMPACTING THESE WALLS/PARTITIONS MUST BE AUTHORIZED BY OWNER/ARCHITECT AND HISTORICAL REVIEW TEAM
- - - = EXISTING WALL/PARTITION TO BE REMOVED.
• OTHER DASHED ITEMS WITHIN REMOVALS PLANS ARE ALSO TO BE REMOVED.
• REFERENCE REMOVAL PLANS AND NOTES.
- = NEW WALL/PARTITION ASSEMBLY.
• REFERENCE PARTITION SCHEDULE
- = INDICATES FIRE RATED WALL/PARTITION ASSEMBLY.
• REFERENCE PARTITION SCHEDULE