

Owner:
Children's Hospital Housing Partners, LP
309 Cumberland Ave.
Suite 203
Portland, Maine 04101

CONSTRUCTION MANAGER:
WRIGHT-RYAN CONSTRUCTION
10 DANFORTH STREET
PORTLAND, ME 04101
TEL: (207) 773-3625

ELM TERRACE

68 HIGH STREET
PORTLAND, MAINE

Project No: 09428

Drawing Title:
REMOVALS PLAN - FIRST FLOOR

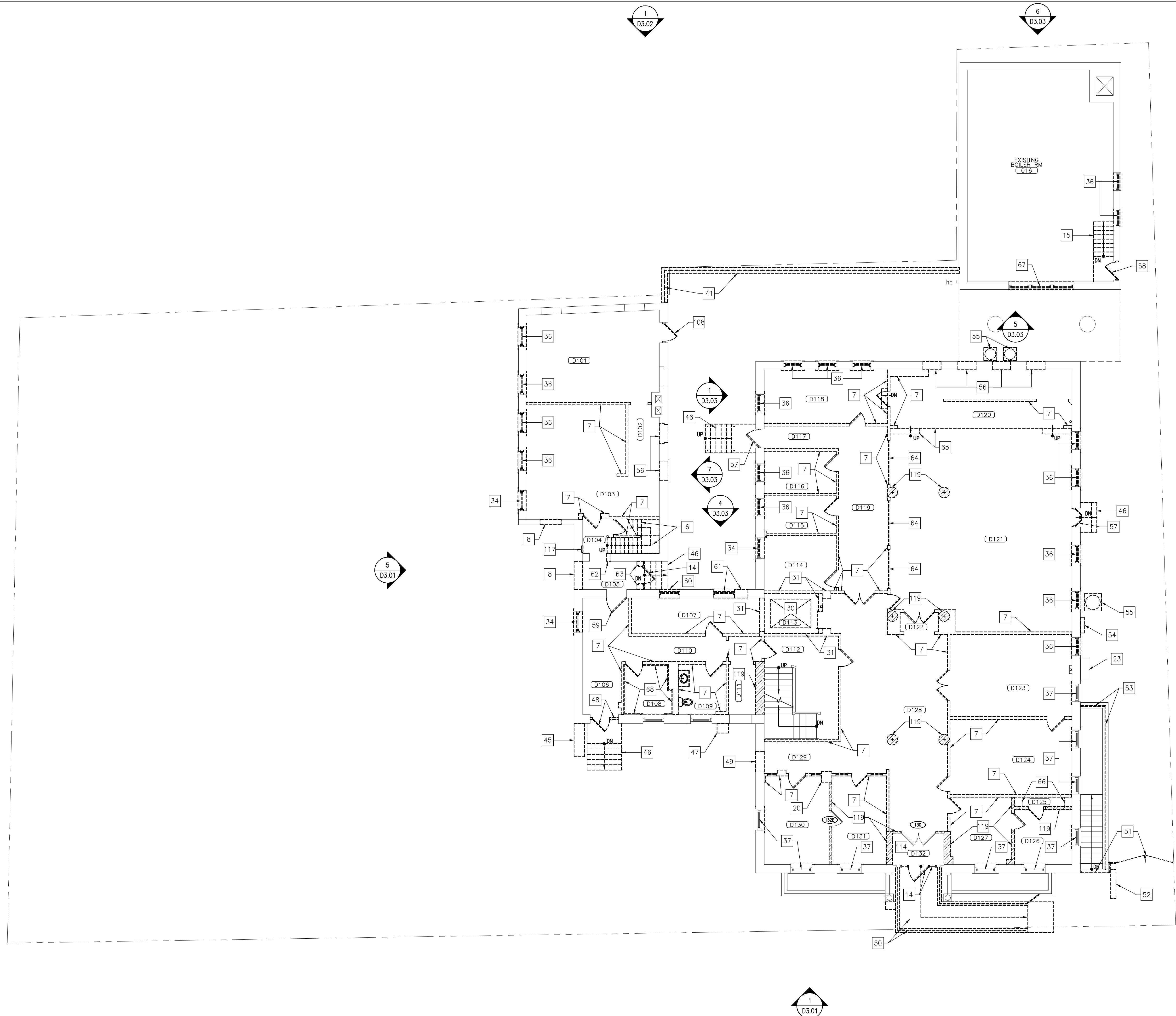
Scale: 1/8" = 1'-0"

Date: ISSUED SEPTEMBER 8, 2011

- Revisions:
- ▲ MAINE HOUSING CONCEPT SUBMISSION 02-01-2011
 - ▲ HISTORIC PRESERVATION SUBMISSION 03-23-2011
 - ▲ 50% MAINEHOUSING REVIEW 04-01-2011
 - ▲ 90% MAINEHOUSING REVIEW 06-03-2011
 - ▲ NPS SUBMISSION 07-01-2011
 - ▲ ISSUED SEPTEMBER 8, 2011

Drawing Number:

D1.01



REFERENCE D0.01 DRAWING FOR ALL REMOVAL NOTES.
DEMOLITION ROOM NUMBERS ARE FOR DEMOLITION INFORMATION ONLY AND SHALL NOT BE USED FOR CONSTRUCTION PURPOSES.

WALL PARTITION LEGEND

- = EXISTING WALL/PARTITION ASSEMBLY TO REMAIN
- = EXISTING HISTORICAL SIGNIFICANT WALL/PARTITION ASSEMBLY TO REMAIN AS IS.
• ANY WORK IMPACTING THESE WALLS/PARTITIONS MUST BE AUTHORIZED BY OWNER/ARCHITECT AND HISTORICAL REVIEW TEAM
- - - = EXISTING WALL/PARTITION TO BE REMOVED.
• OTHER DASHED ITEMS WITHIN REMOVALS PLANS ARE ALSO TO BE REMOVED.
• REFERENCE REMOVAL PLANS AND NOTES.
- = NEW WALL/PARTITION ASSEMBLY.
• REFERENCE PARTITION SCHEDULE
- = INDICATES FIRE RATED WALL/PARTITION ASSEMBLY.
• REFERENCE PARTITION SCHEDULE

