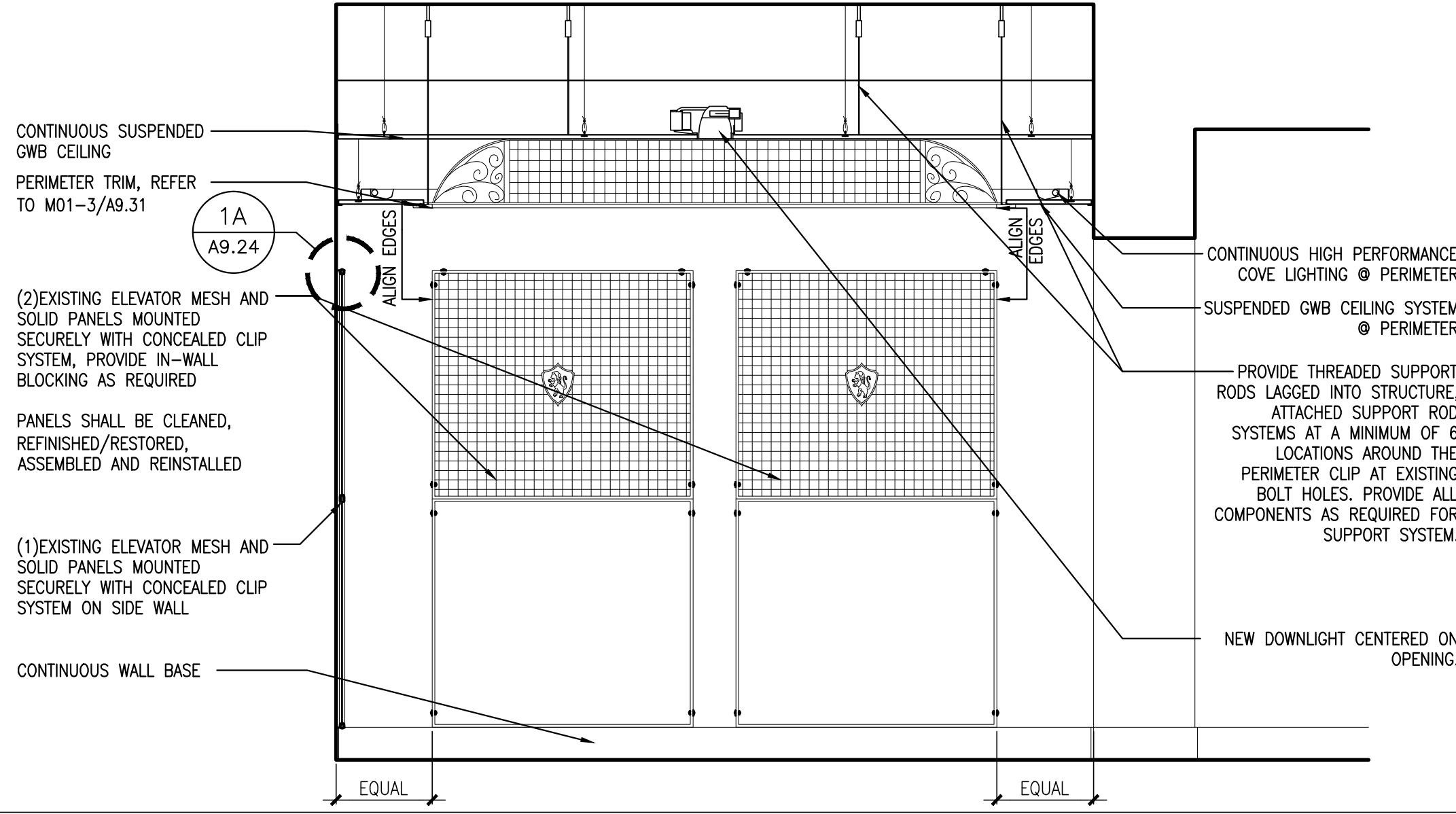
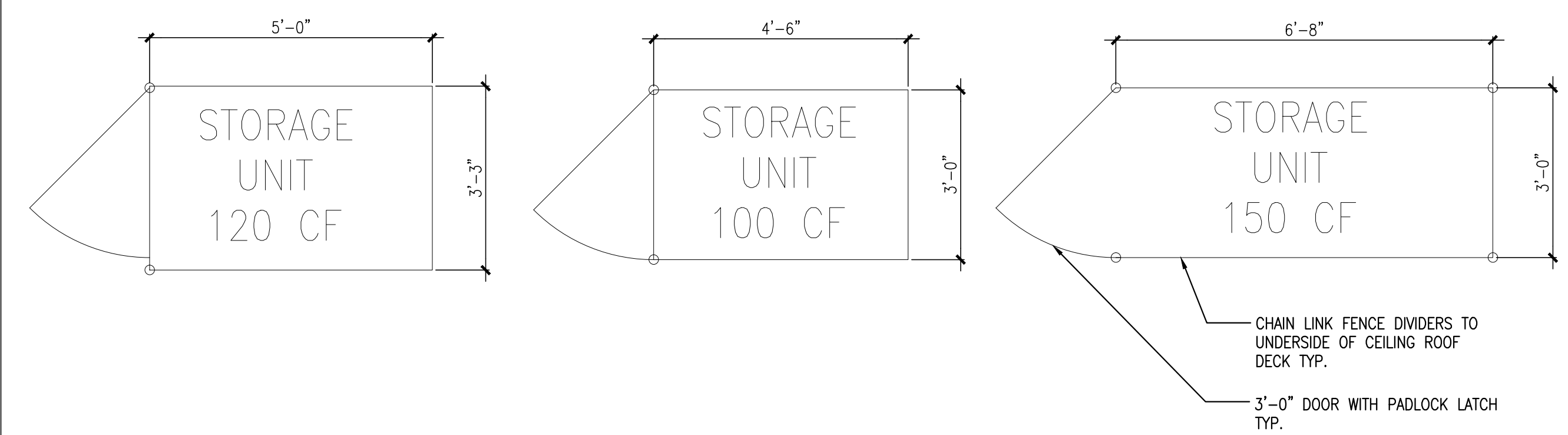


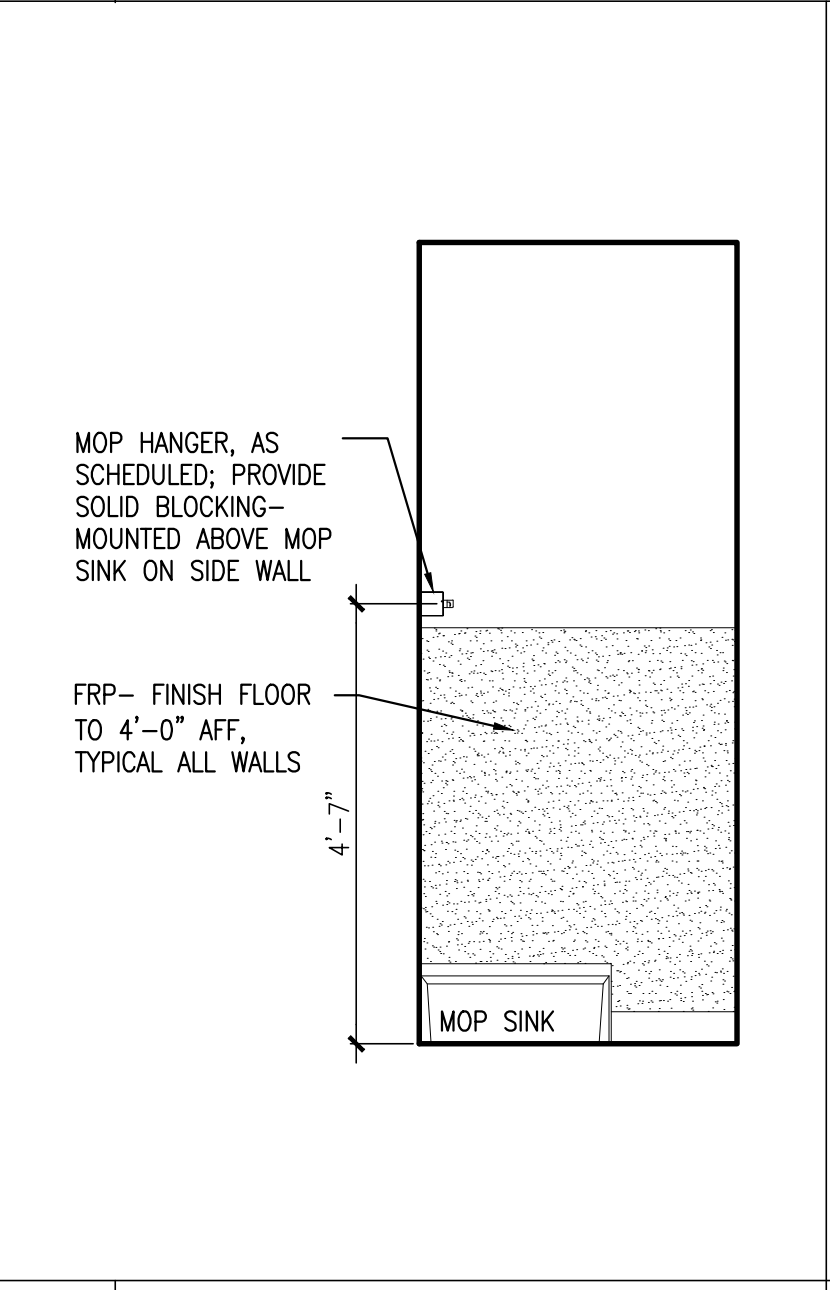
1A- WALL PANEL CONNECTION DETAIL  
SCALE: 3" = 1'-0"



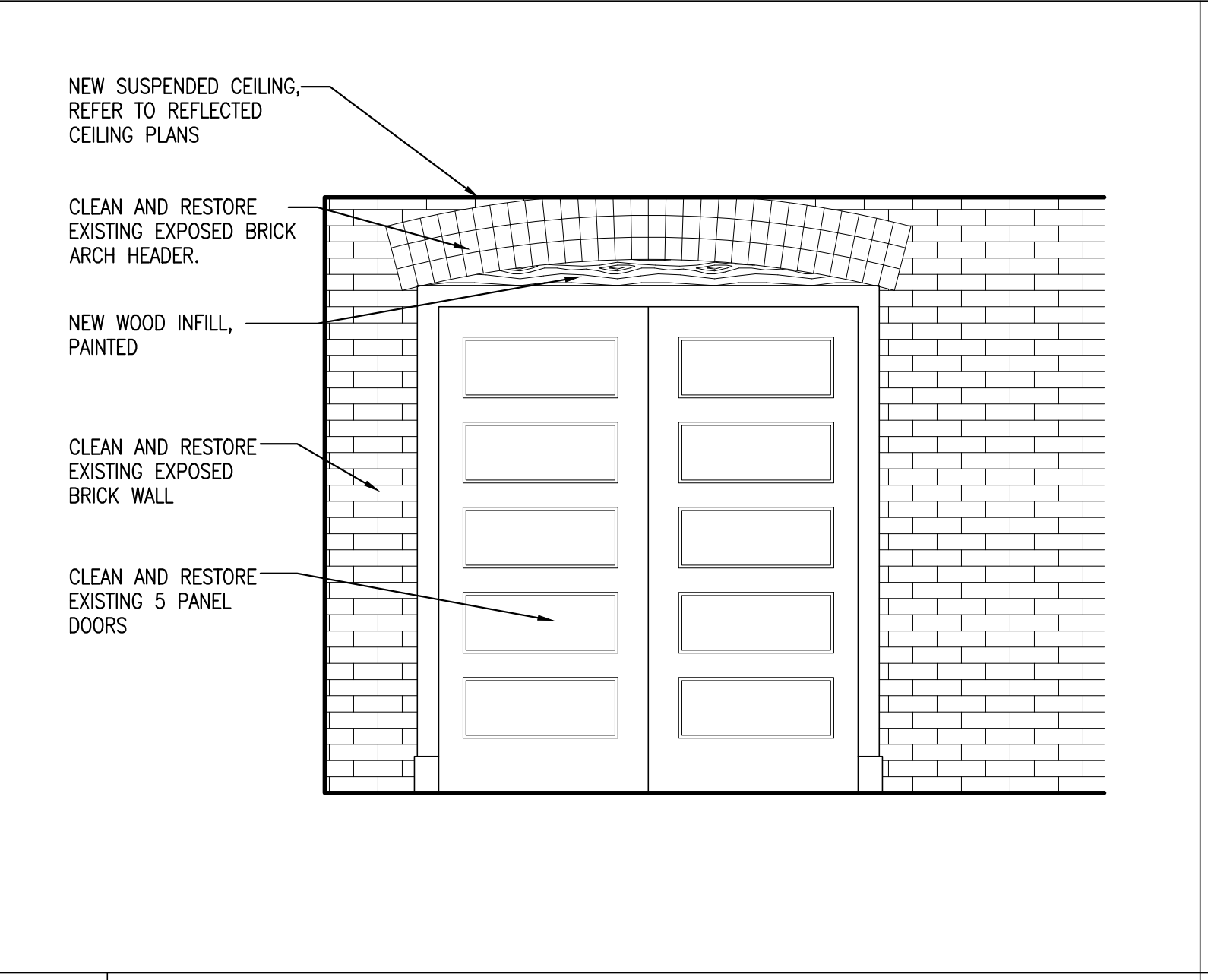
1 CORRIDOR 127- EXISTING ELEVATOR COMPONENTS & CONNECTION DETAIL  
SCALE: 1/2" = 1'-0"



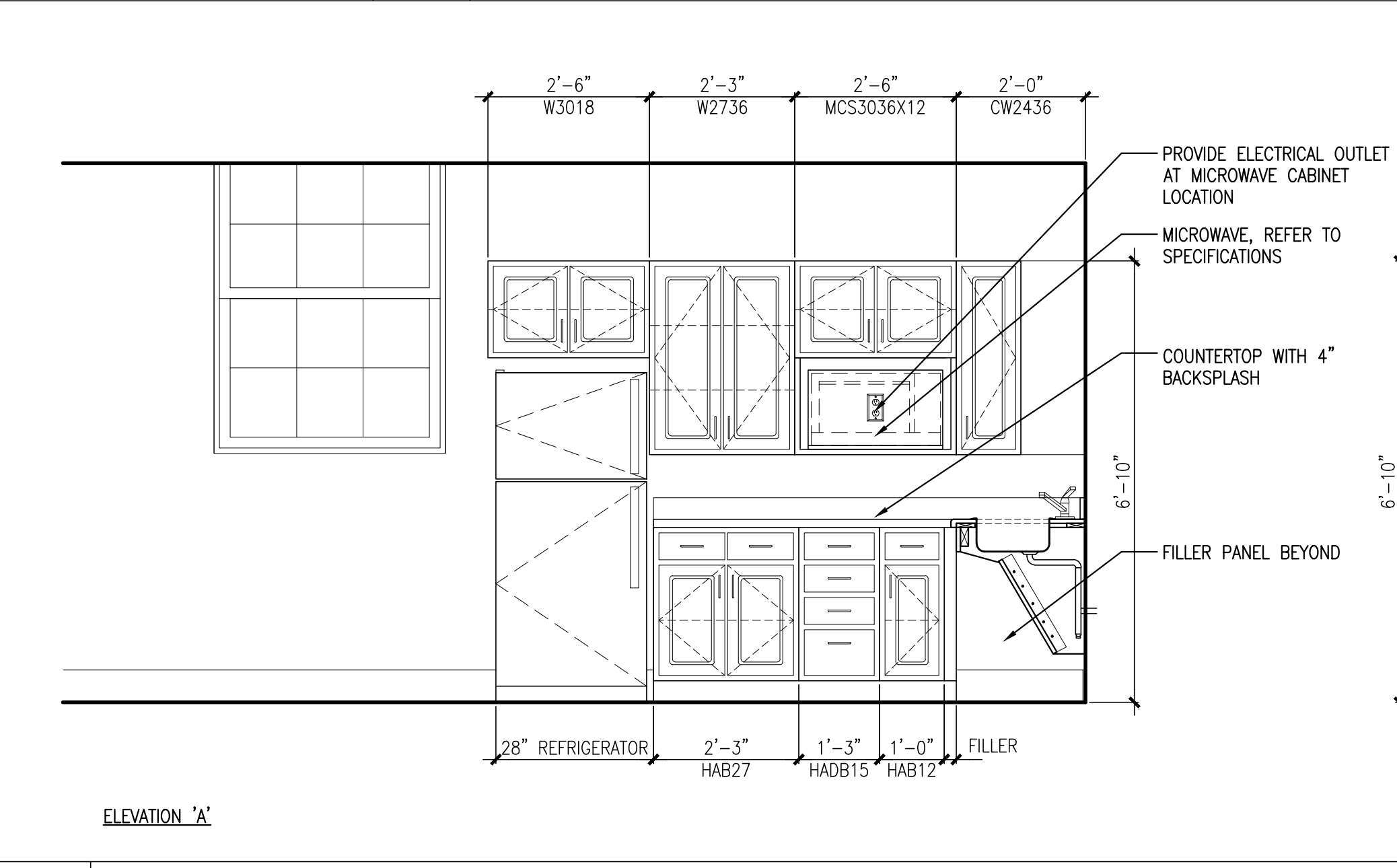
2 TYPICAL STORAGE UNIT DIMENSIONS  
SCALE: 1/2" = 1'-0"



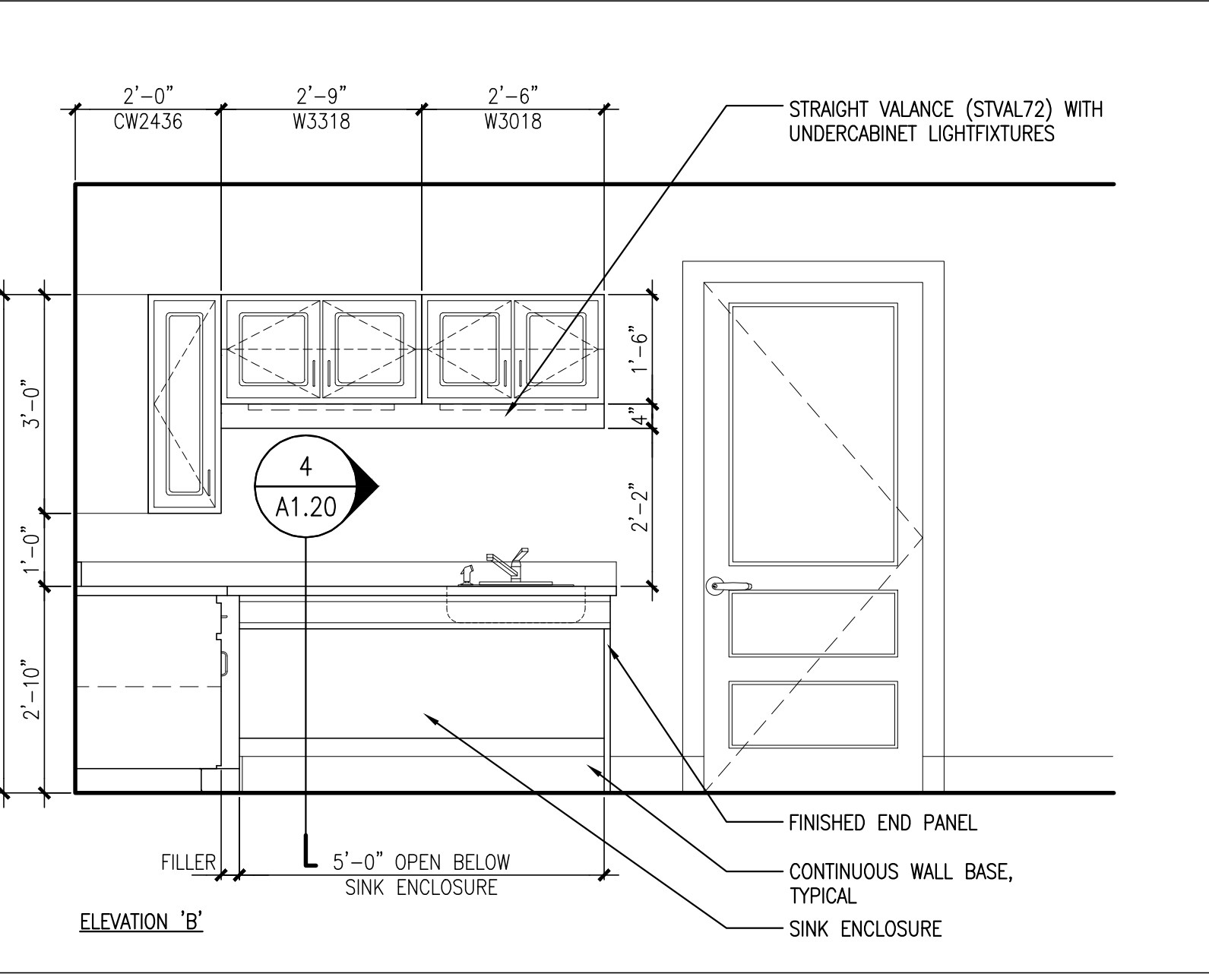
3 CL. 329  
SCALE: 1/2" = 1'-0"



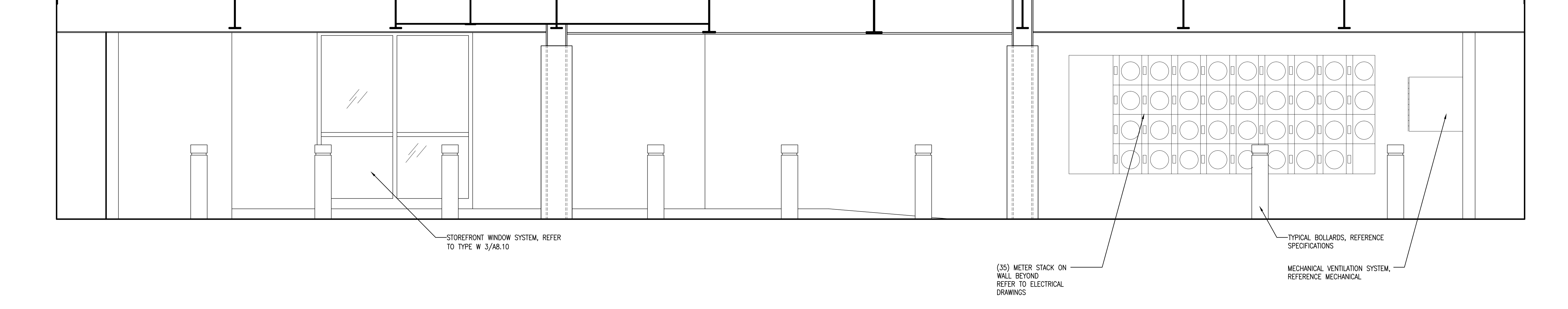
4 COMMUNITY ROOM 014  
SCALE: 1/2" = 1'-0"



5 COMMUNITY ROOM 027 KITCHENETTE ELEVATIONS  
SCALE: 1/2" = 1'-0"



7 PARKING GARAGE - PLAN EAST ELEVATION  
SCALE: 1/2" = 1'-0"



7 PARKING GARAGE - PLAN EAST ELEVATION  
SCALE: 1/2" = 1'-0"

**CWS Architects**  
Architecture  
Space Planning  
Value Design  
434 Cumberland Avenue  
Portland, ME 04101  
Phone: (207)774-4441  
Fax: (207)774-4016  
www.CWSarch.com

REGISTERED ARCHITECT  
BENEDICT W. WILKINSON  
NO. 1947  
STATE OF MAINE

Owner:  
**Children's Hospital Housing Partners, LP**  
309 Cumberland Ave.  
Suite 203  
Portland, Maine 04101

CONSTRUCTION MANAGER:  
**WRIGHT-RYAN CONSTRUCTION**  
10 DANFORTH STREET  
PORTLAND, ME 04101  
TEL: (207) 773-3625

**ELM TERRACE**  
68 HIGH STREET  
PORTLAND, MAINE

Project No: 09428  
Drawing Title:  
**INTERIOR ELEVATIONS**  
Scale: AS NOTED  
Date: ISSUED SEPTEMBER 8, 2011  
Revisions:  
MAINE HOUSING CONCEPT SUBMISSION 02-01-2011  
HISTORIC PRESERVATION SUBMISSION 03-23-2011  
50% MAINEHOUSING REVIEW 04-01-2011  
90% MAINEHOUSING REVIEW 06-03-2011  
NPS SUBMISSION 07-01-2011  
ISSUED SEPTEMBER 8, 2011  
Drawing Number:  
**A9.24**  
9/7/2011 2:21 PM