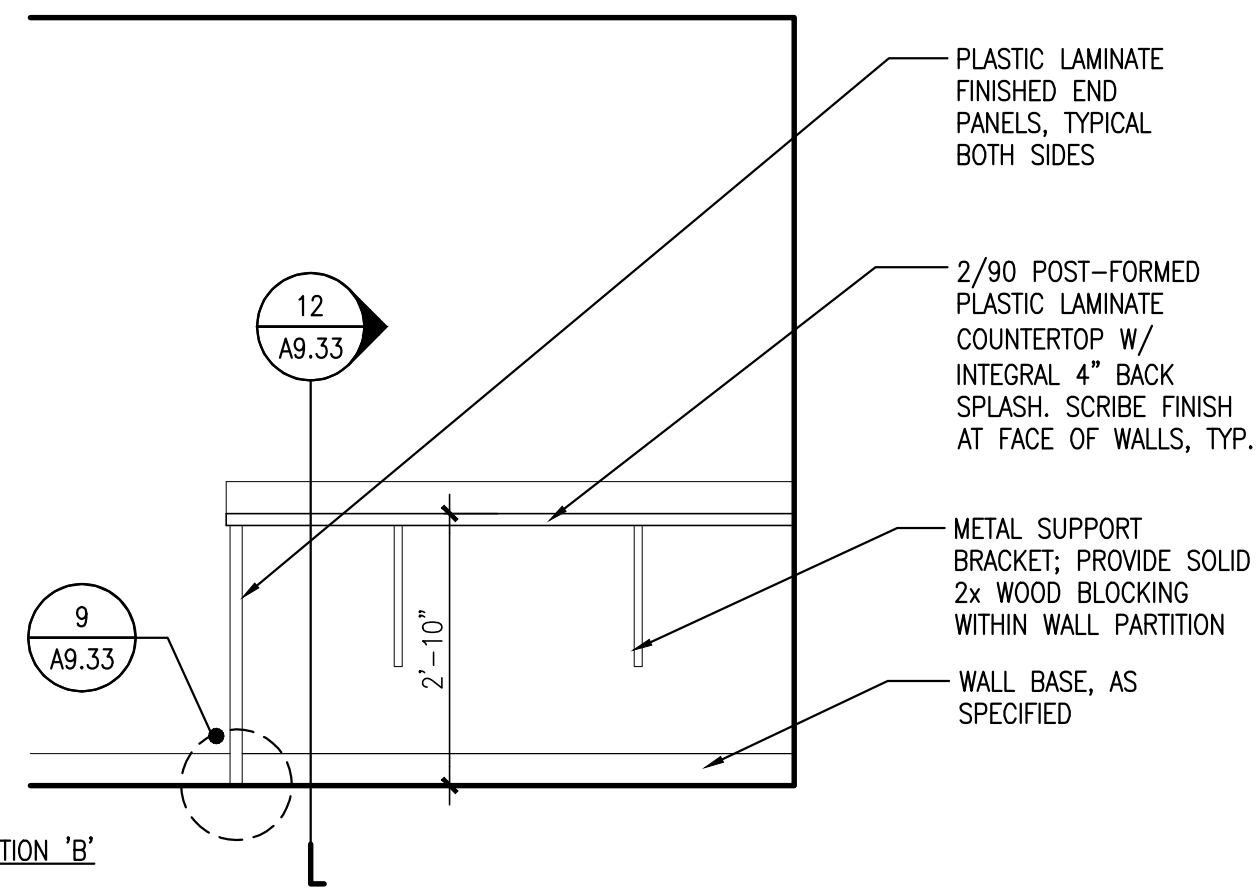
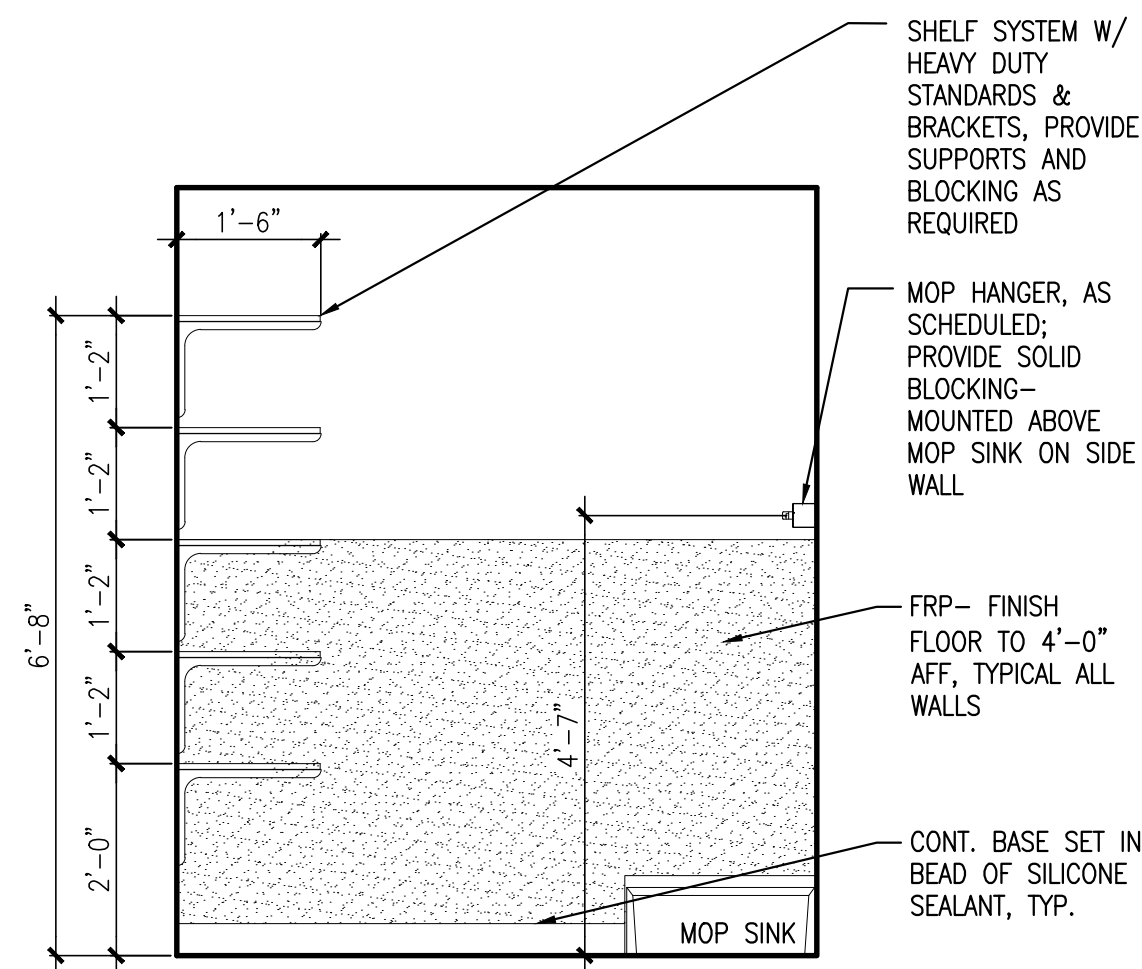


ELEVATION 'A'

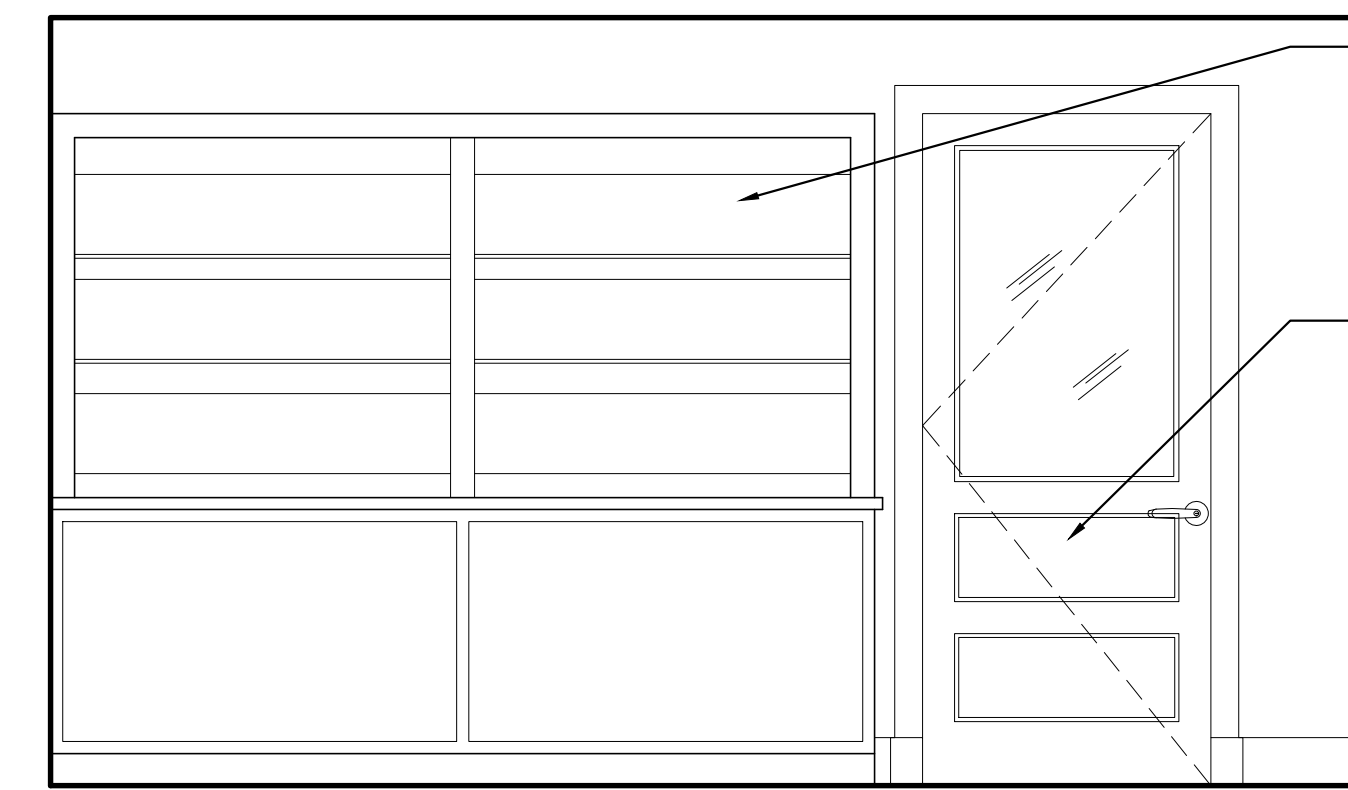


ELEVATION 'B'



**2** JAN

REFERENCED FROM: SCALE: 1/2" = 1'-0"

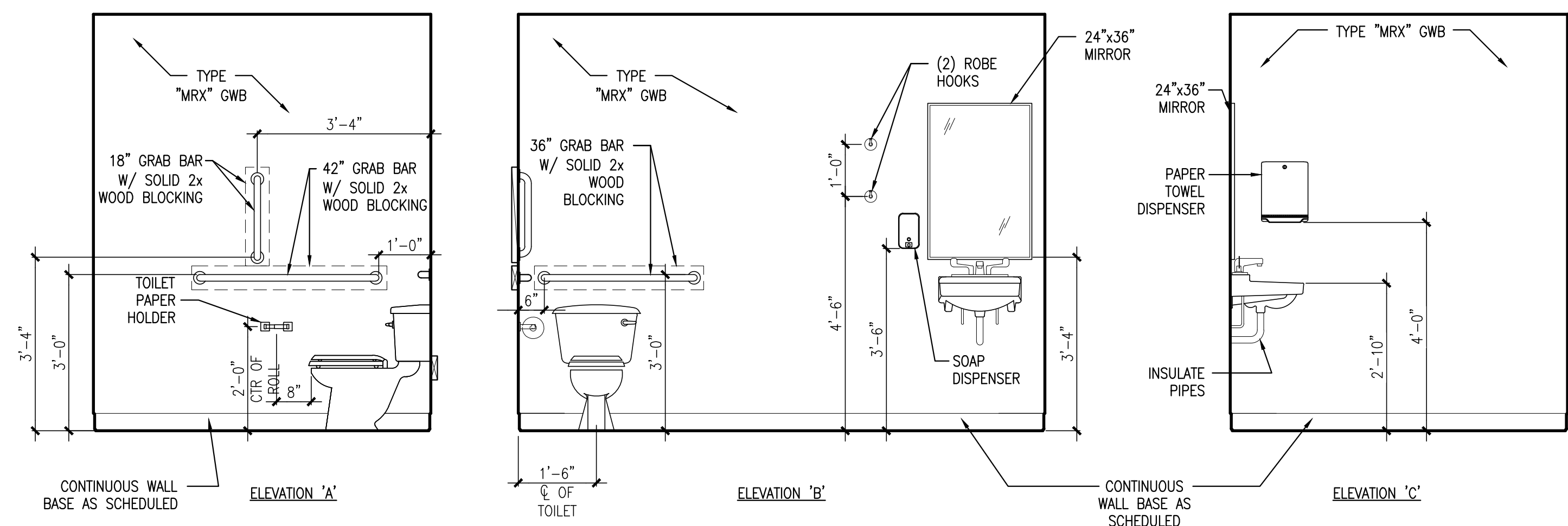


**3** RESIDENT SERVICES CABINERY

REFERENCED FROM: SCALE: 1/2" = 1'-0"

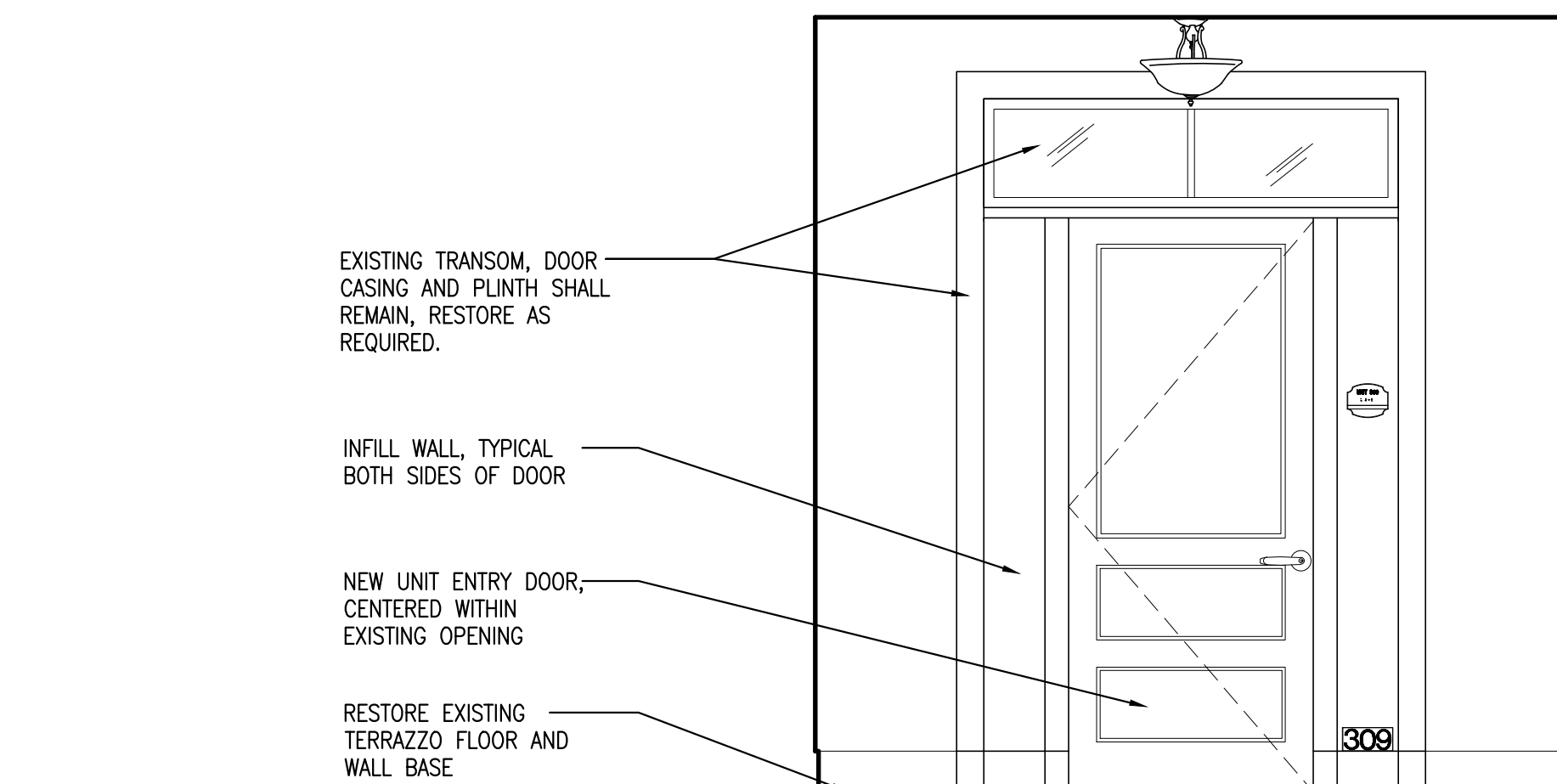
**1** LAUNDRY ROOM ELEVATIONS

REFERENCED FROM: SCALE: 1/2" = 1'-0"



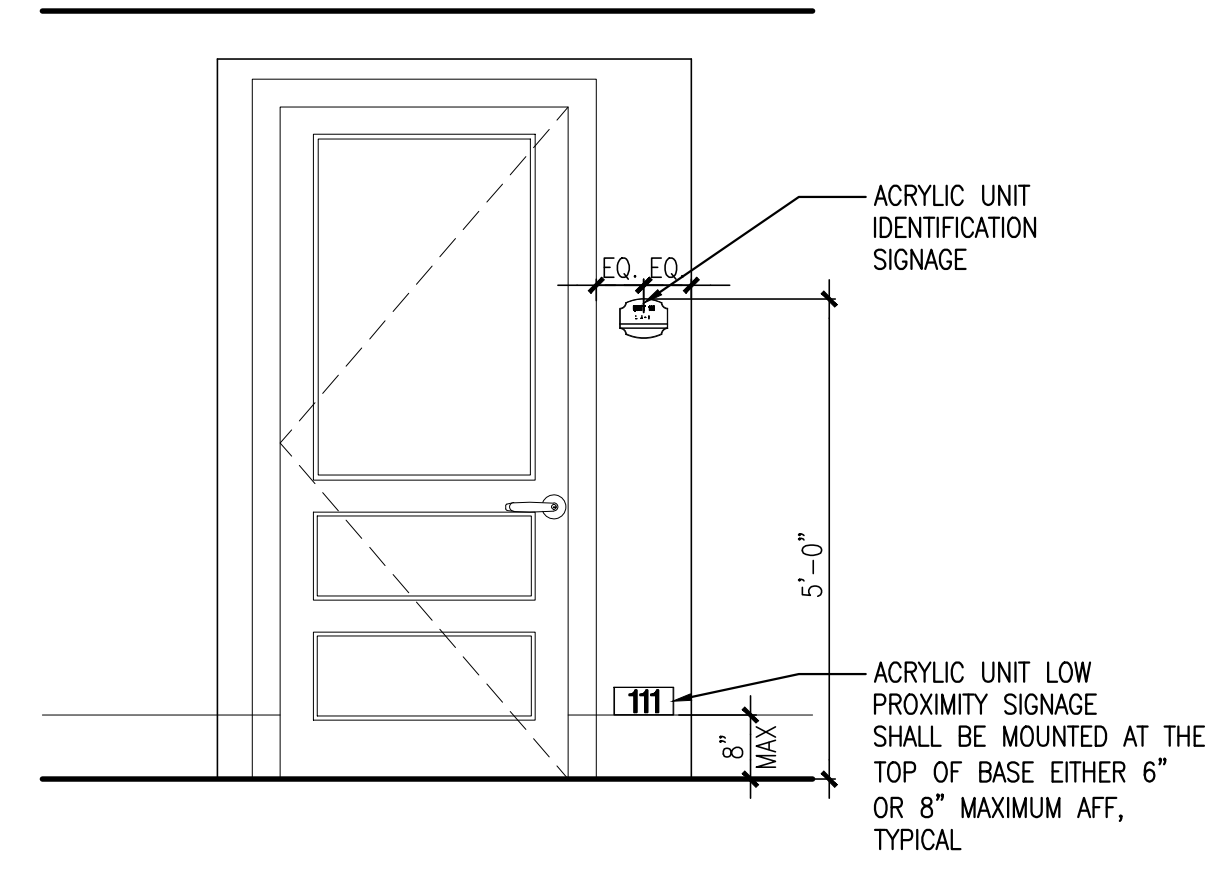
**4** TOILET 002 ELEVATIONS

REFERENCED FROM: SCALE: 1/2" = 1'-0"



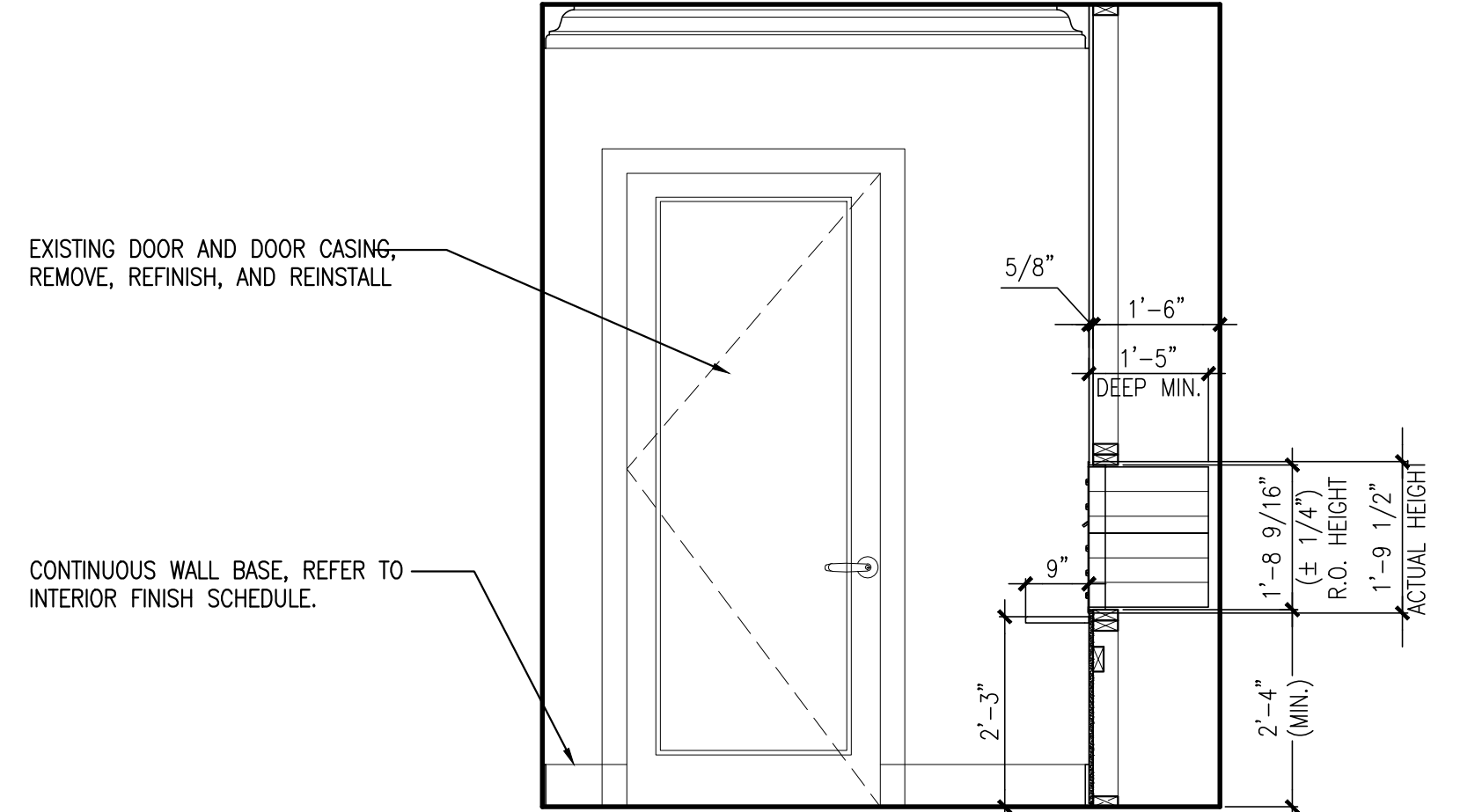
**6** CORRIDOR 327- PLAN NORTH ELEVATION

REFERENCED FROM: SCALE: 1/2" = 1'-0"



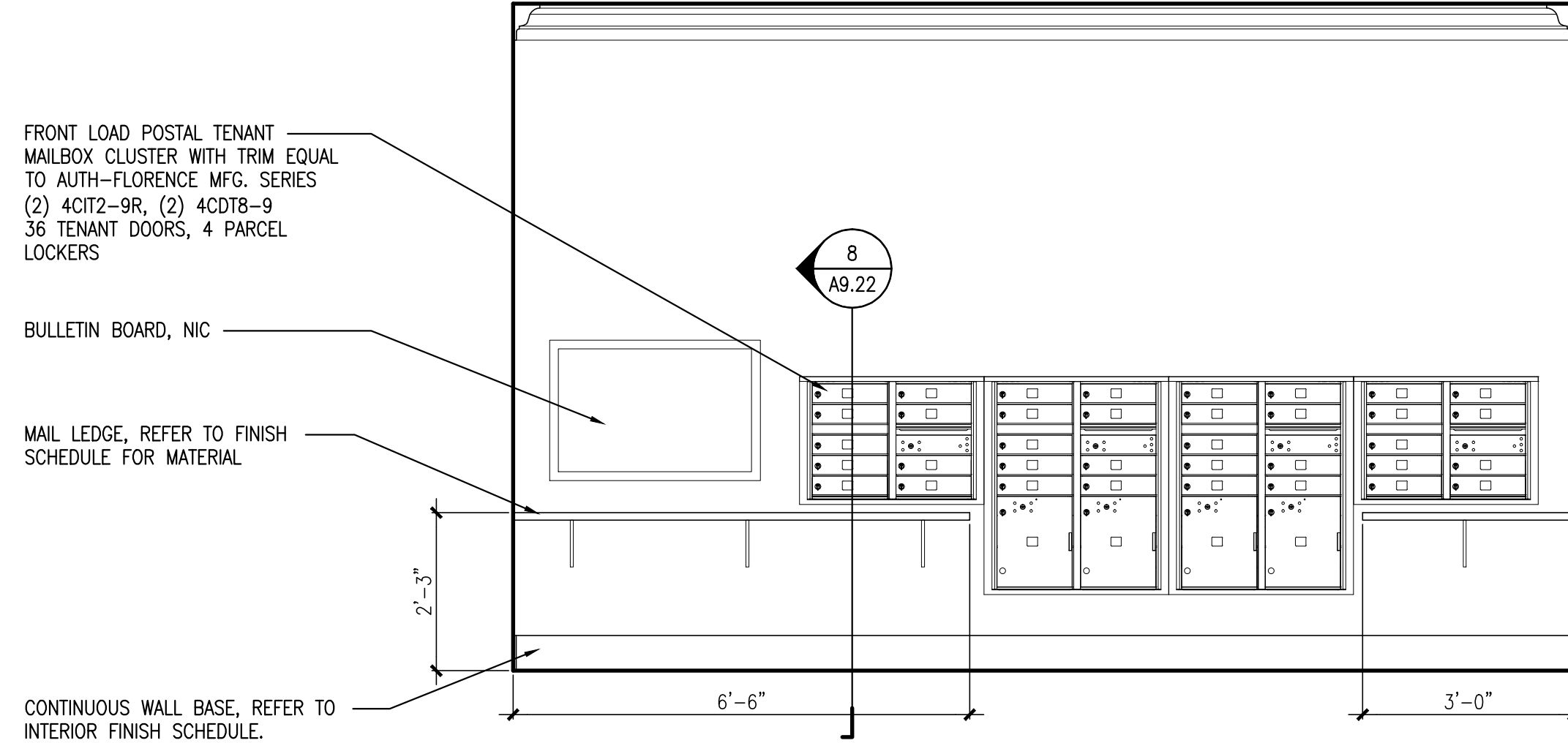
**7** UNIT ENTRY ALCOVE @ ADDITION

REFERENCED FROM: SCALE: 1/2" = 1'-0"



**8** MAIL ROOM ELEVATION

REFERENCED FROM: SCALE: 1/2" = 1'-0"



**9** MAIL ROOM ELEVATION

REFERENCED FROM: SCALE: 1/2" = 1'-0"

**CWS**  
**CWS Architects**  
 Architecture  
 Space Planning  
 Value Design  
 434 Cumberland Avenue  
 Portland, ME 04101  
 Phone: (207)774-4441  
 Fax: (207)774-4016  
 www.CWSarch.com

Owner:  
**Children's Hospital Housing Partners, LP**  
 309 Cumberland Ave.  
 Suite 203  
 Portland, Maine 04101  
 CONSTRUCTION MANAGER:  
**WRIGHT-RYAN CONSTRUCTION**  
 10 DANFORTH STREET  
 PORTLAND, ME 04101  
 TEL: (207) 773-3625

**ELM TERRACE**  
 68 HIGH STREET  
 PORTLAND, MAINE

Project No: 09428  
 Drawing Title:  
**INTERIOR ELEVATIONS**  
 Scale: AS NOTED  
 Date: ISSUED SEPTEMBER 8, 2011  
 Revisions:  
 MAINE HOUSING CONCEPT SUBMISSION 02-01-2011  
 HISTORIC PRESERVATION SUBMISSION 03-23-2011  
 50% MANEUVERING REVIEW 04-01-2011  
 90% MANEUVERING REVIEW 06-03-2011  
 NPS SUBMISSION 07-01-2011  
 ISSUED SEPTEMBER 8, 2011  
 Drawing Number:  
**A9.22**