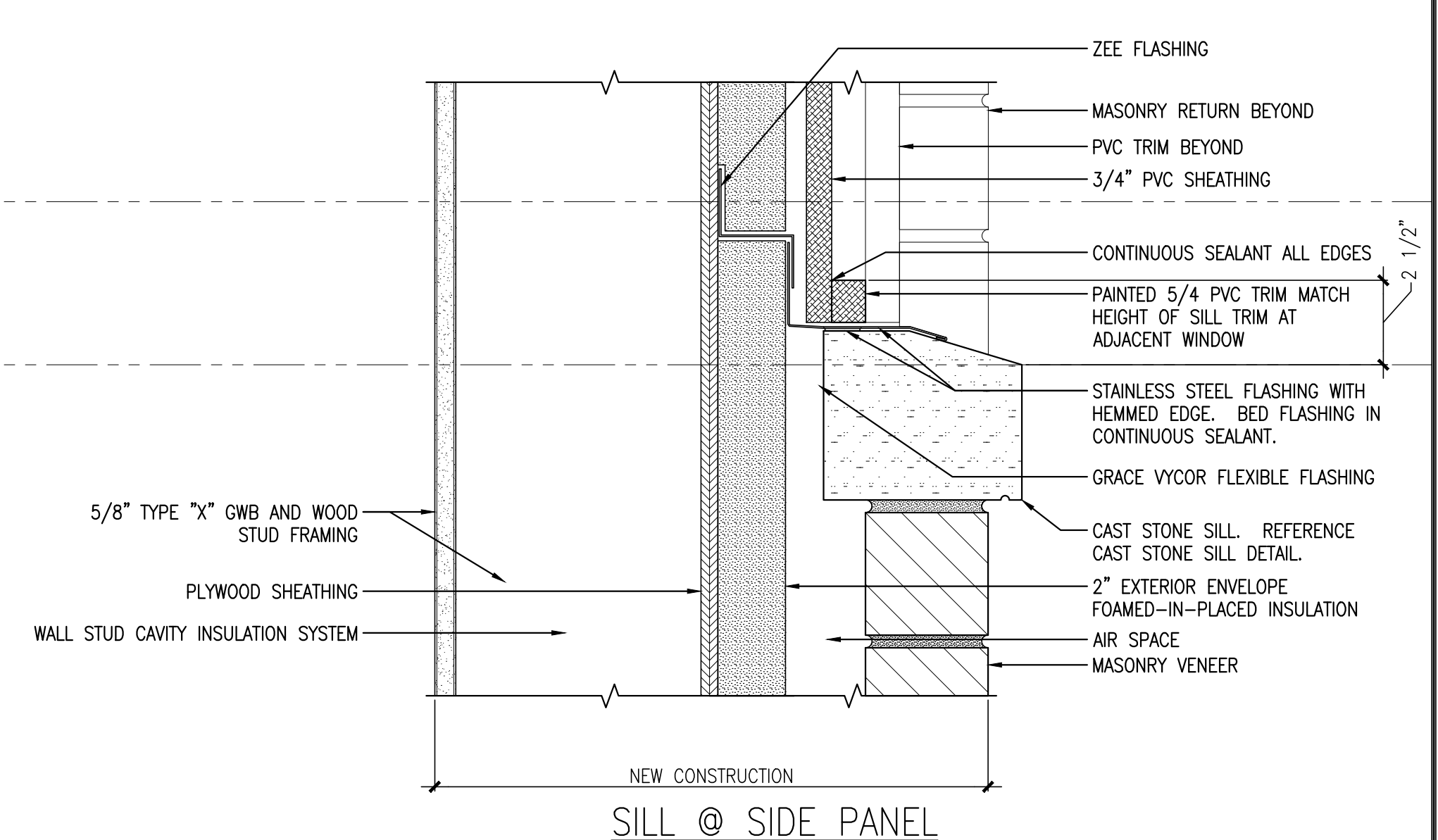
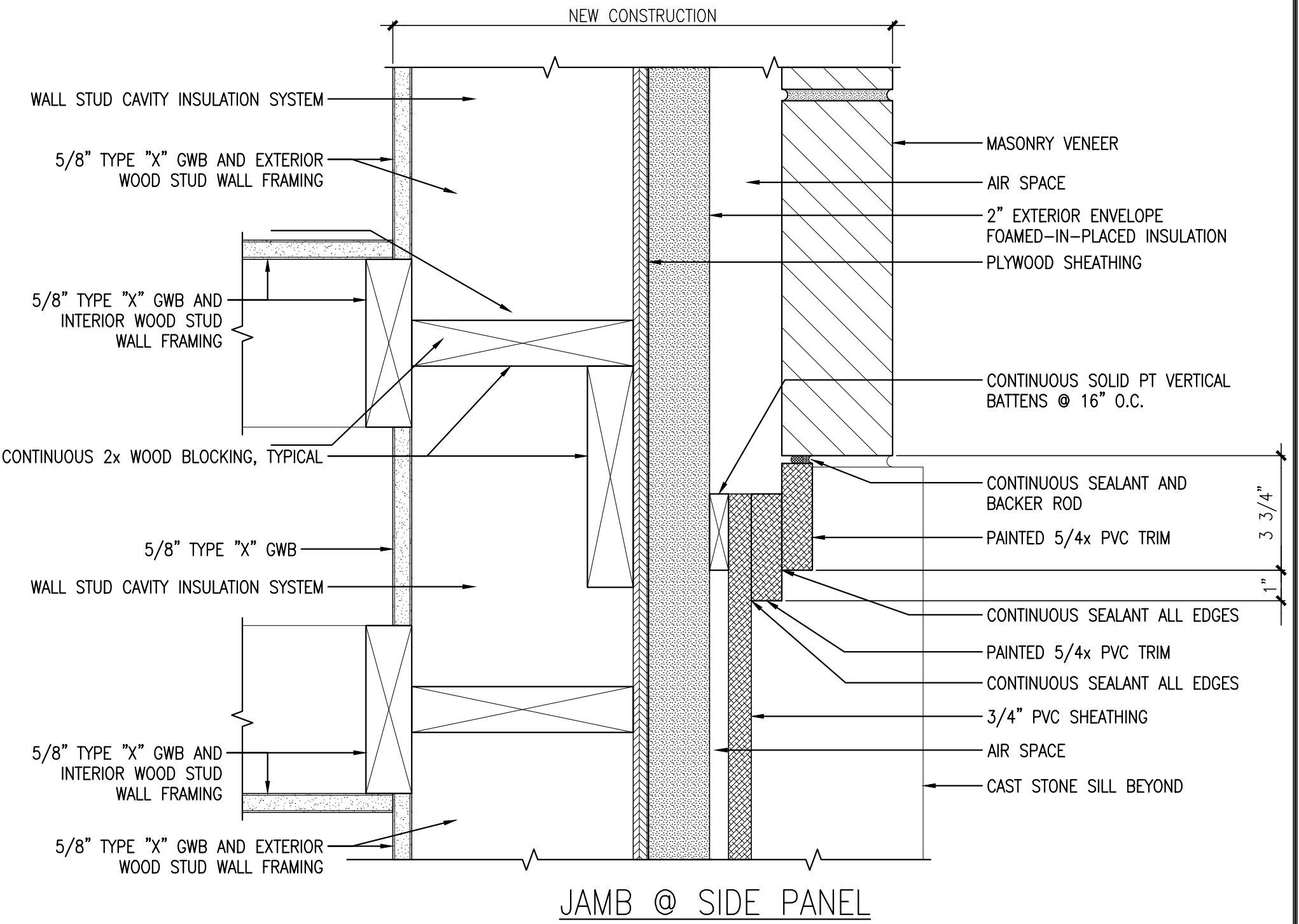
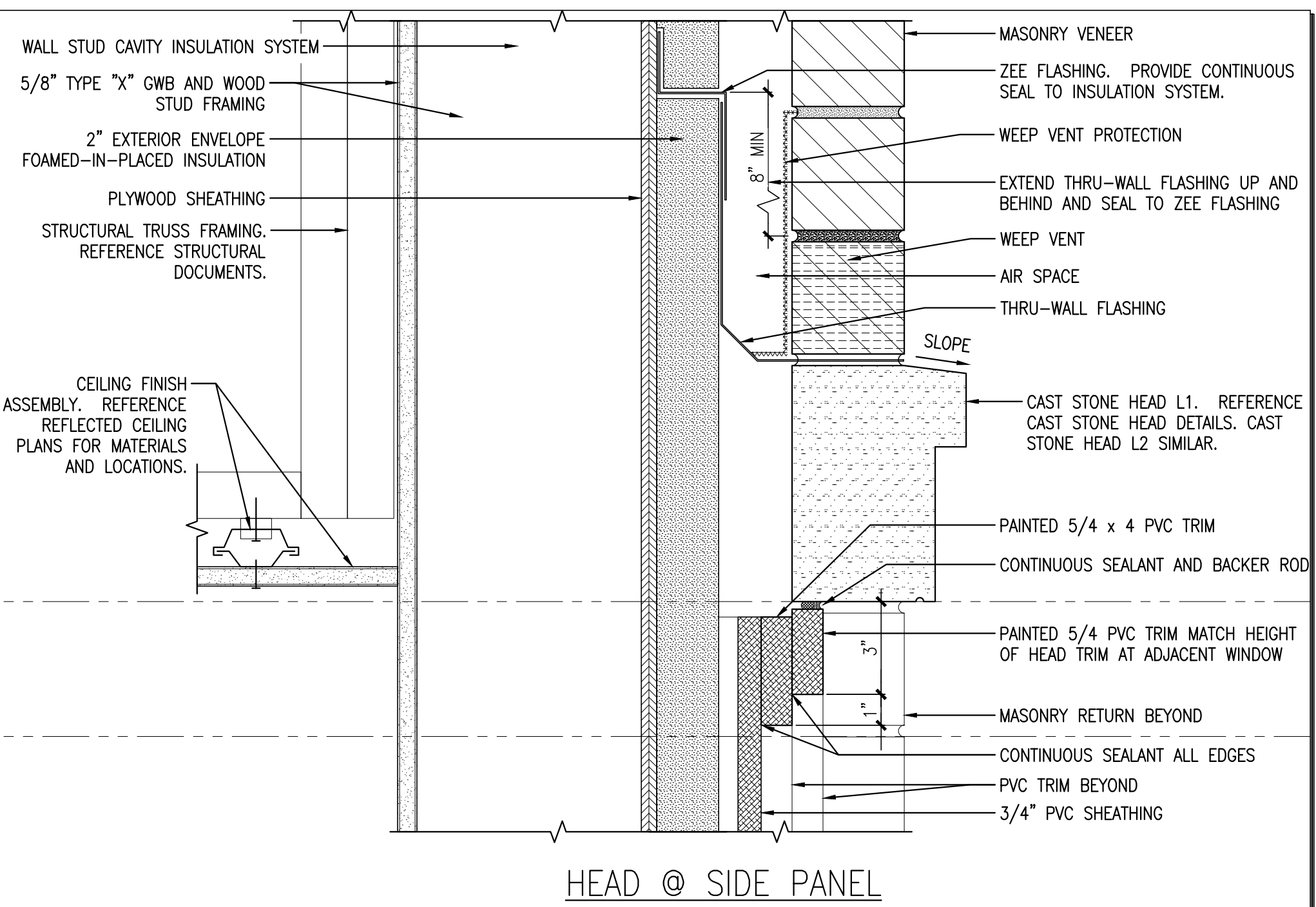
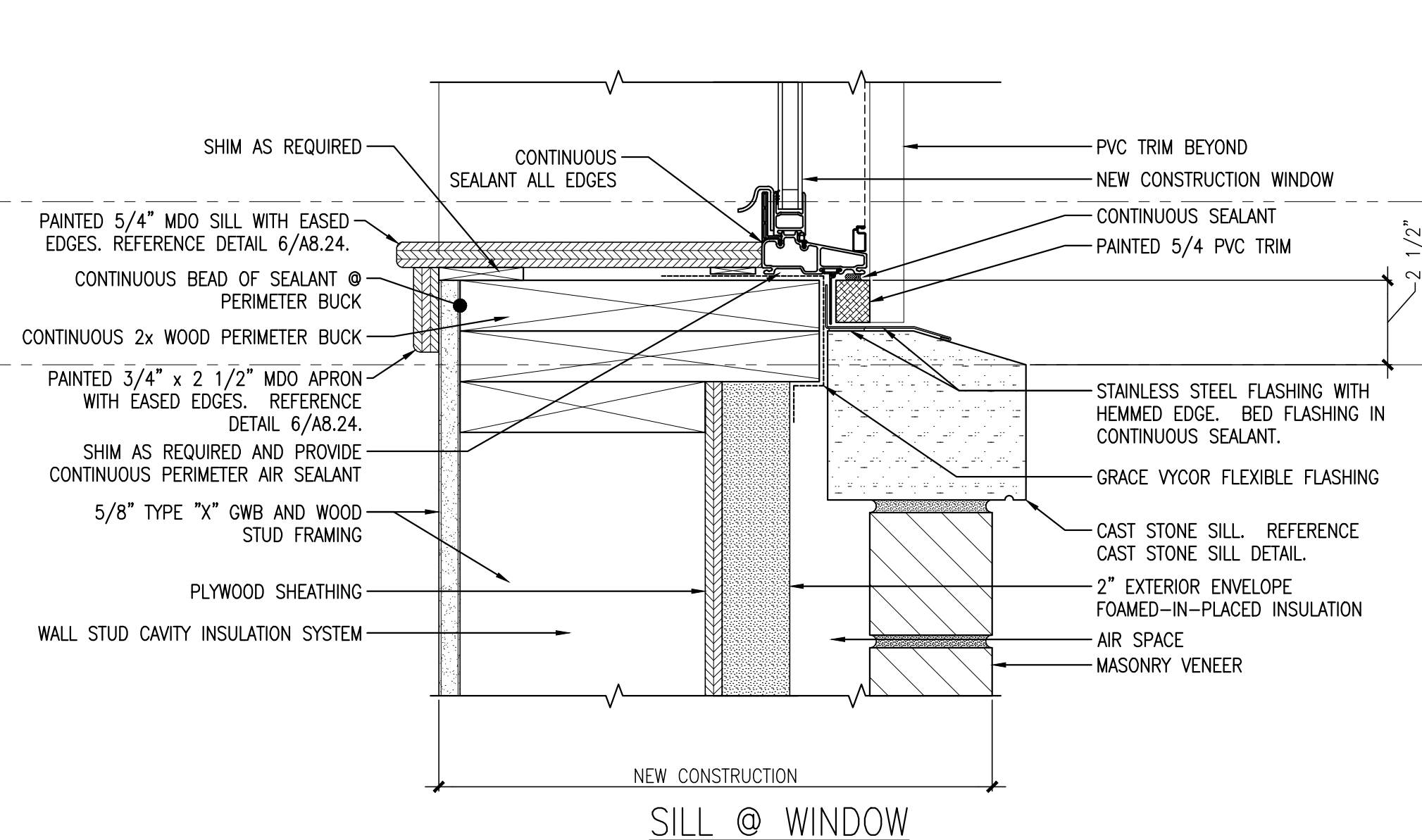
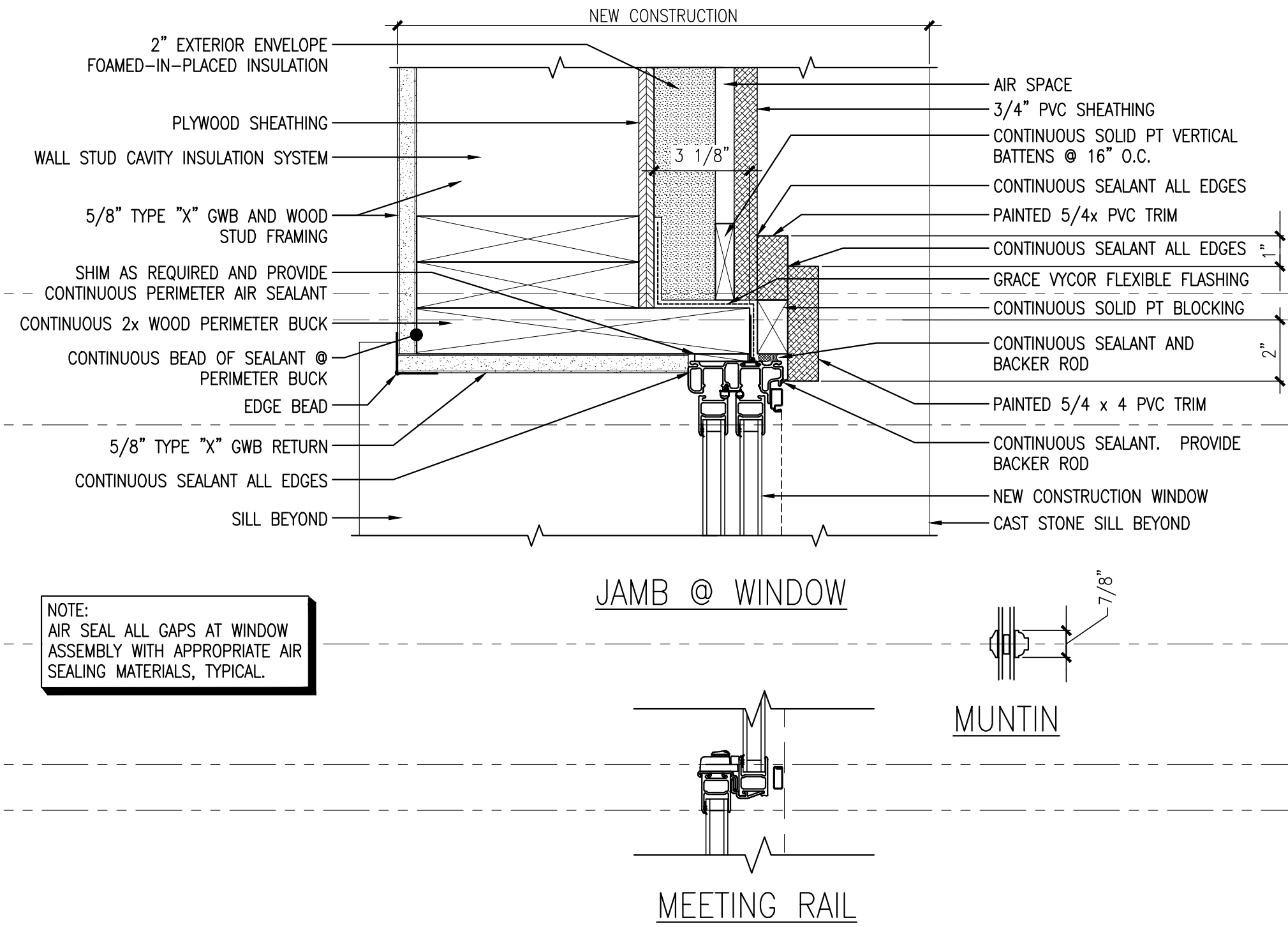
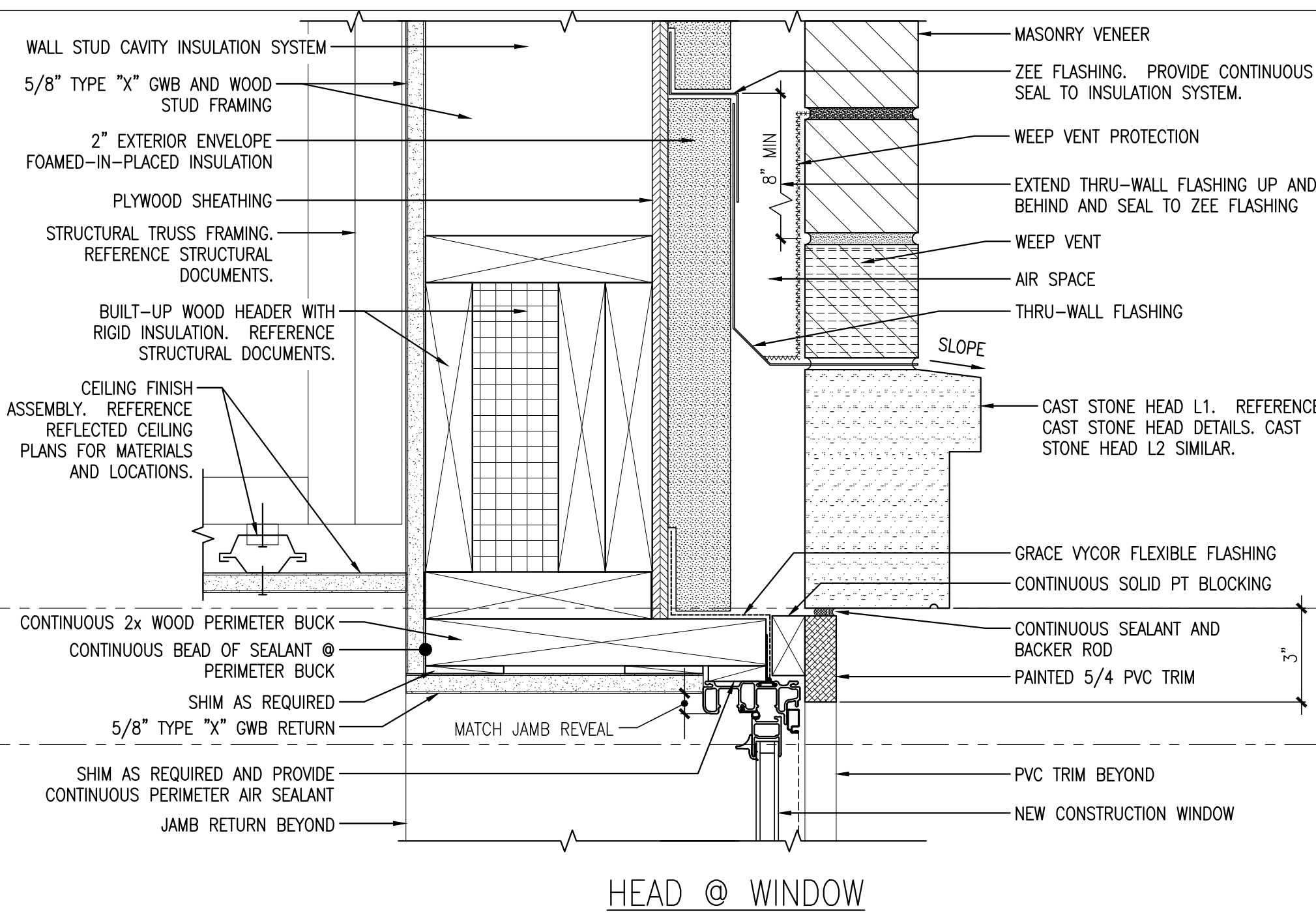
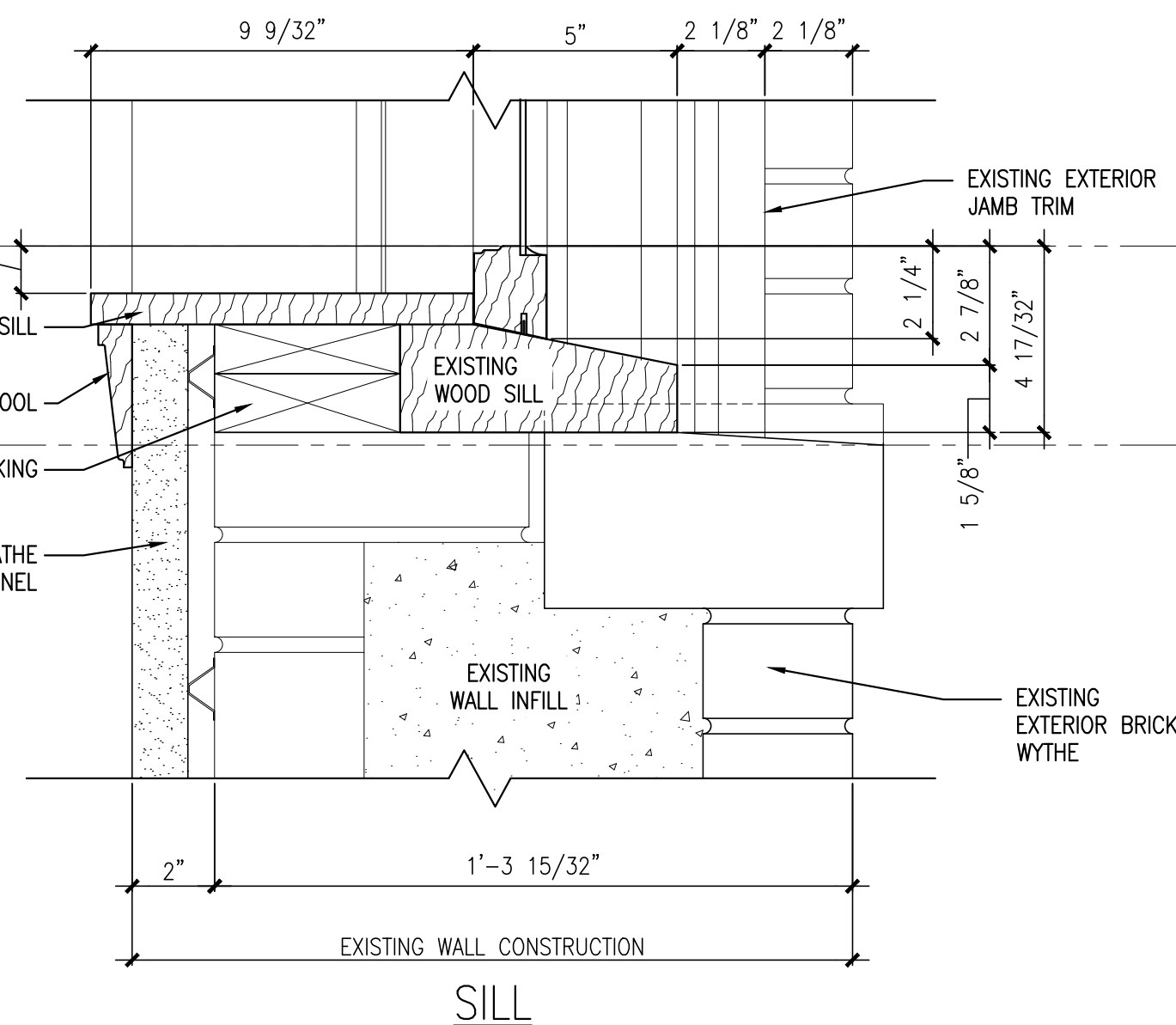
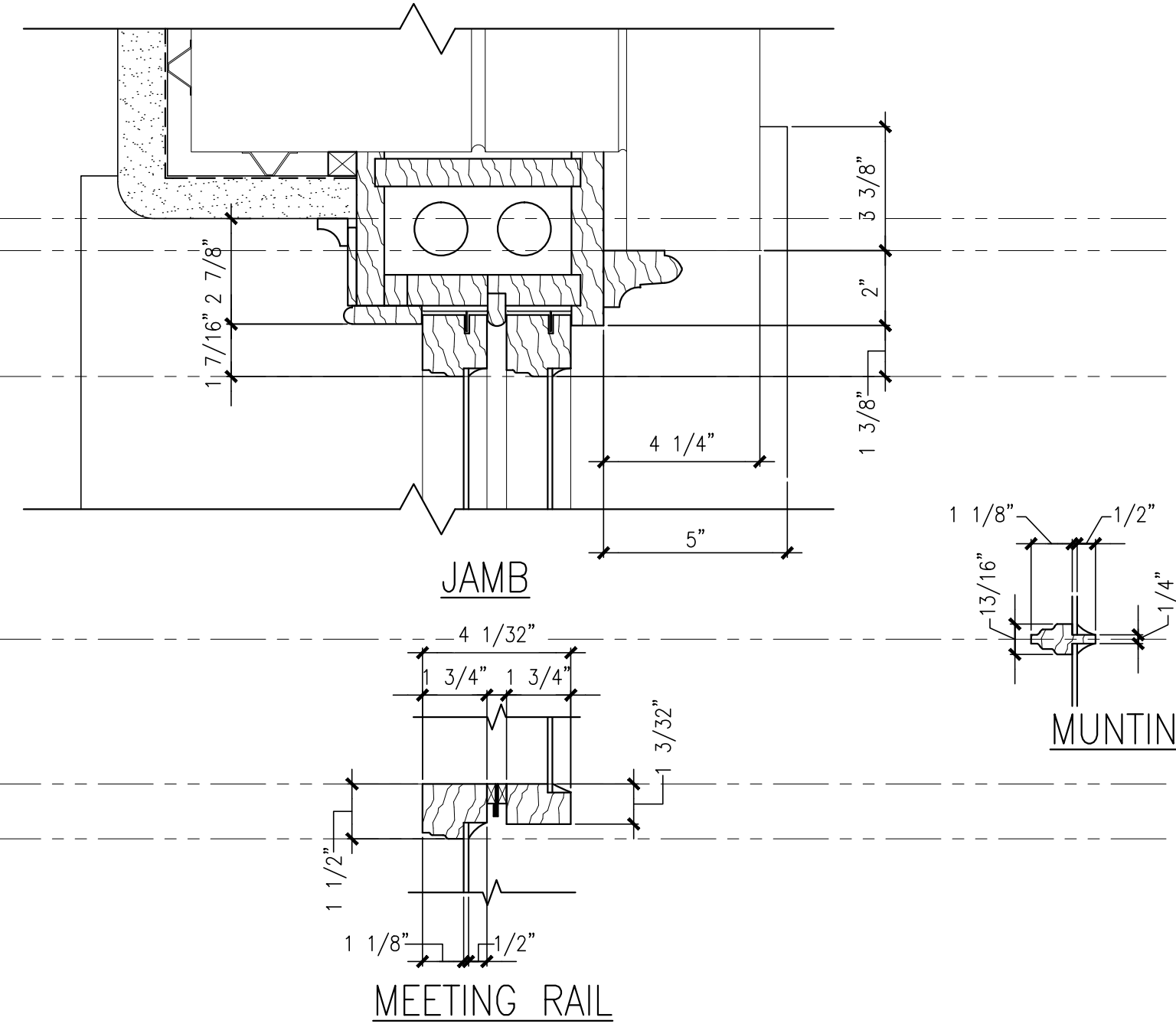
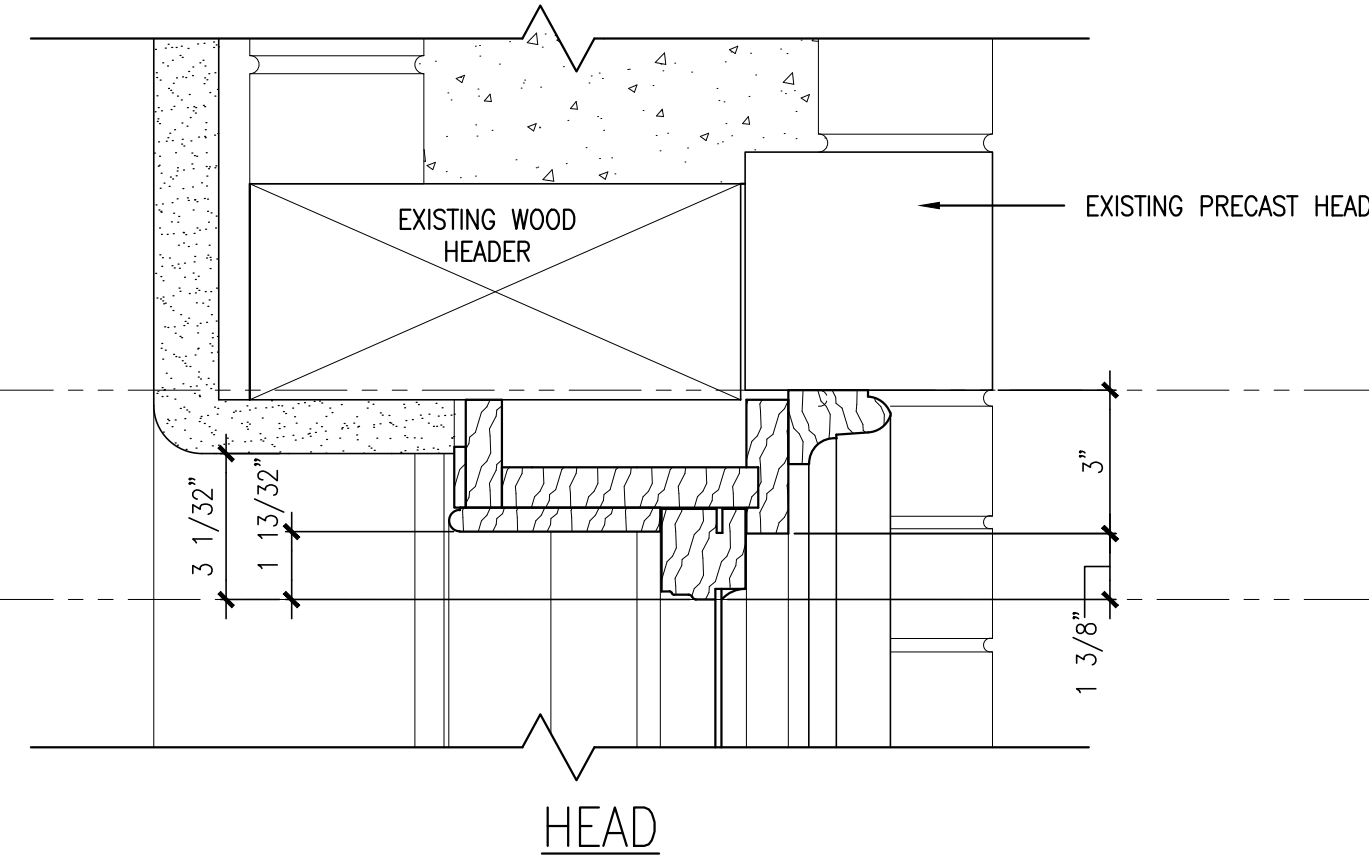


EXISTING FIELD DIMENSIONS INDICATED ARE APPROXIMATE AND ARE BASED UPON LIMITED SITE VERIFICATION. CONTRACTOR IS VERIFY ALL EXISTING DIMENSIONS AND CONDITIONS.



NOTE: AIR SEAL ALL GAPS AT WINDOW ASSEMBLY WITH APPROPRIATE AIR SEALING MATERIALS, TYPICAL.

**7** EXISTING CONDITION OF TYPICAL EXISTING WINDOW ASSEMBLY  
REFERENCED FROM: SCALE: 3" = 1'-0"

**8** FIBERGLASS WINDOW ASSEMBLY "AG" @ MASONRY WALL CONDITION & PVC SIDE PANELS  
REFERENCED FROM: SCALE: 3" = 1'-0"

**CWS Architects**  
Architecture  
Space Planning  
Value Design  
434 Cumberland Avenue  
Portland, ME 04101  
Phone: (207)774-4441  
Fax: (207)774-4016  
www.CWSarch.com

REGISTERED ARCHITECT  
BENEDICT  
WILKINSON  
NO. 1947  
STATE OF MAINE

Owner:  
**Children's Hospital Housing Partners, LP**  
309 Cumberland Ave.  
Suite 203  
Portland, Maine 04101

CONSTRUCTION MANAGER:  
**WRIGHT-RYAN CONSTRUCTION**  
10 DANFORTH STREET  
PORTLAND, ME 04101  
TEL: (201) 773-3625

**ELM TERRACE**  
68 HIGH STREET  
PORTLAND, MAINE

Project No: 09428

Drawing Title:  
**WINDOW DETAILS**

Scale: AS NOTED  
Date: ISSUED SEPTEMBER 8, 2011

Revisions:  
MAINE HOUSING CONCEPT SUBMISSION 02-01-2011  
HISTORIC PRESERVATION SUBMISSION 03-23-2011  
50% MAINEHOUSING REVIEW 04-01-2011  
90% MAINEHOUSING REVIEW 06-03-2011  
NPS SUBMISSION 07-01-2011  
ISSUED SEPTEMBER 8, 2011

Drawing Number:  
**A8.27**