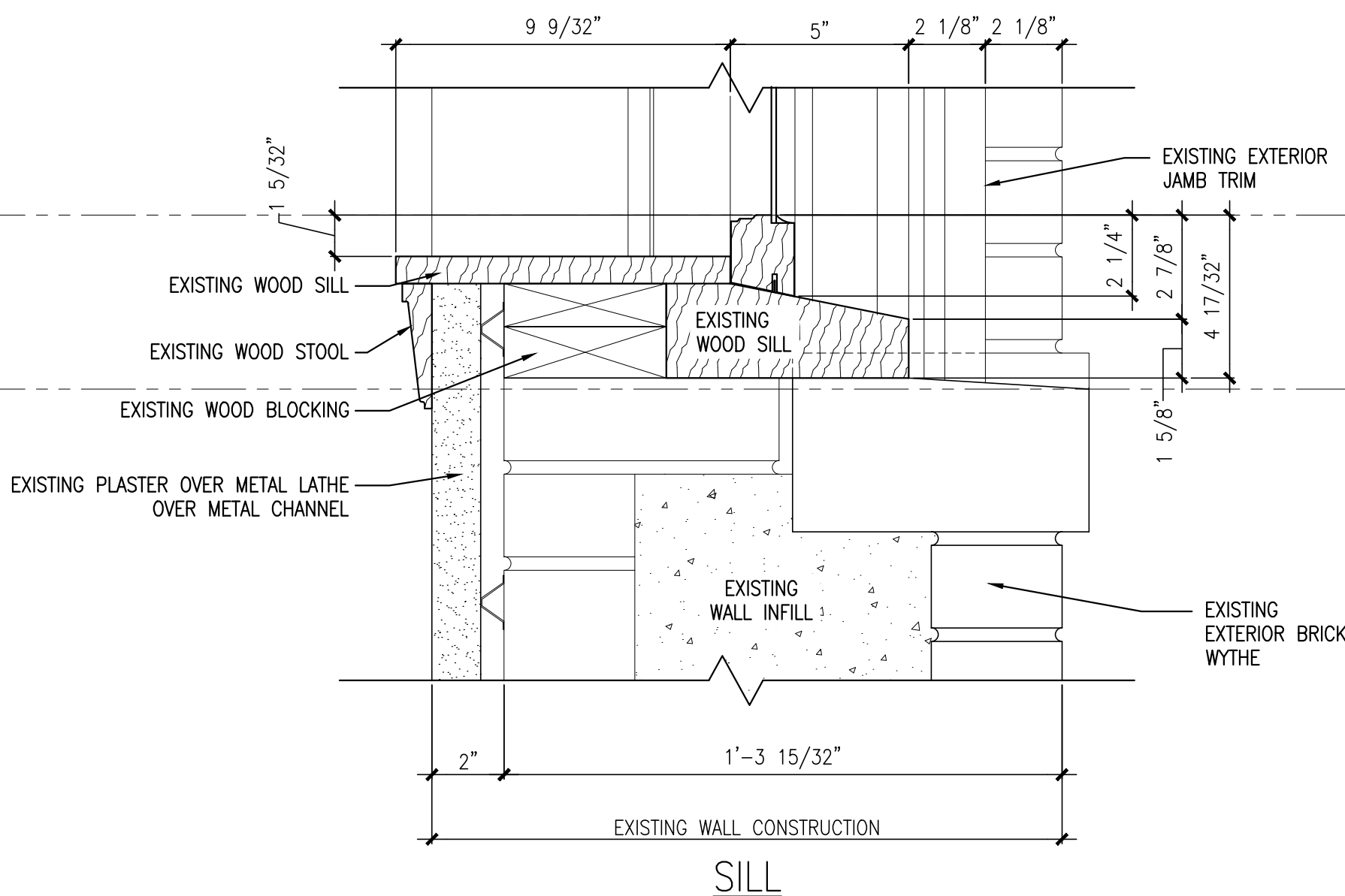
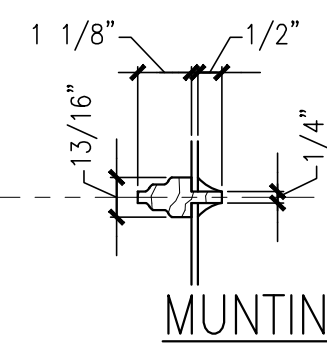
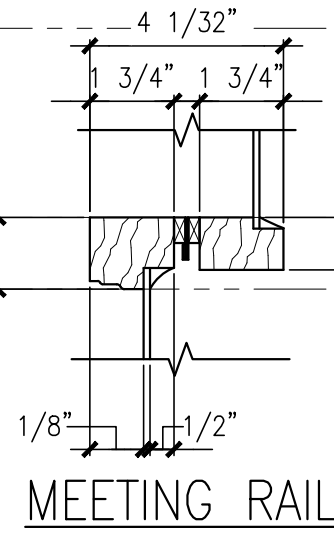
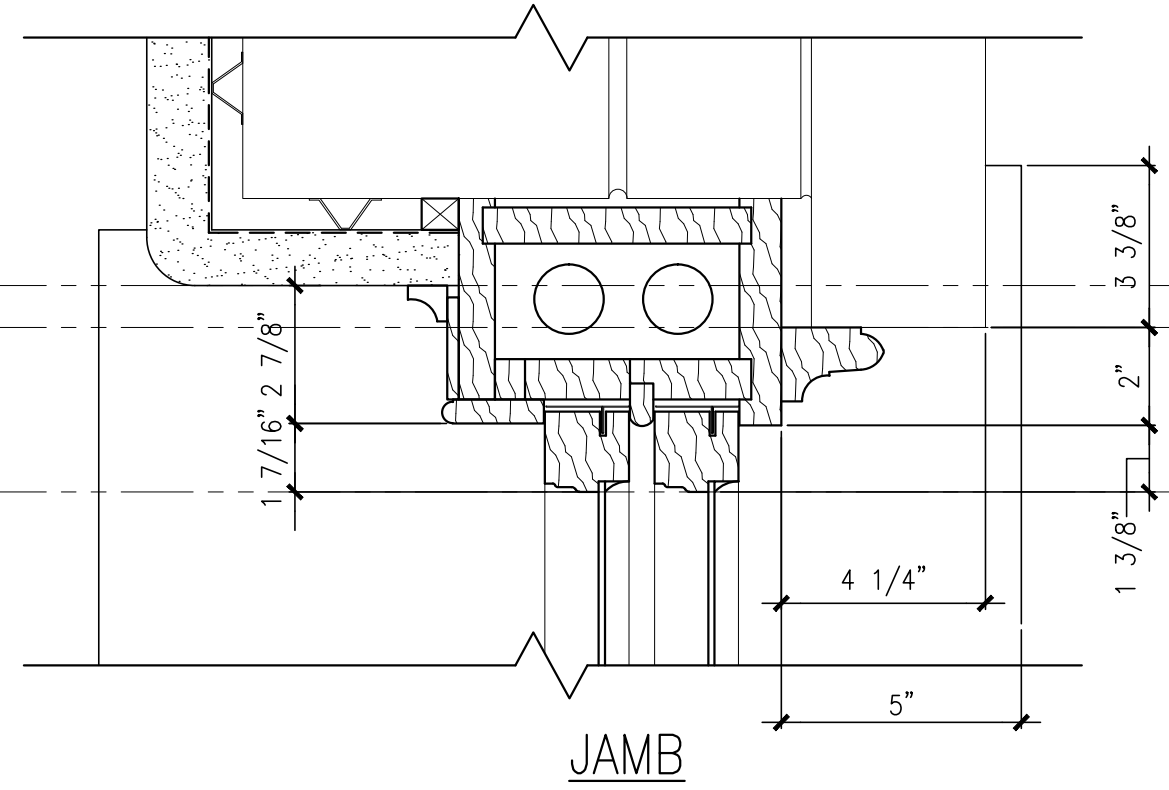
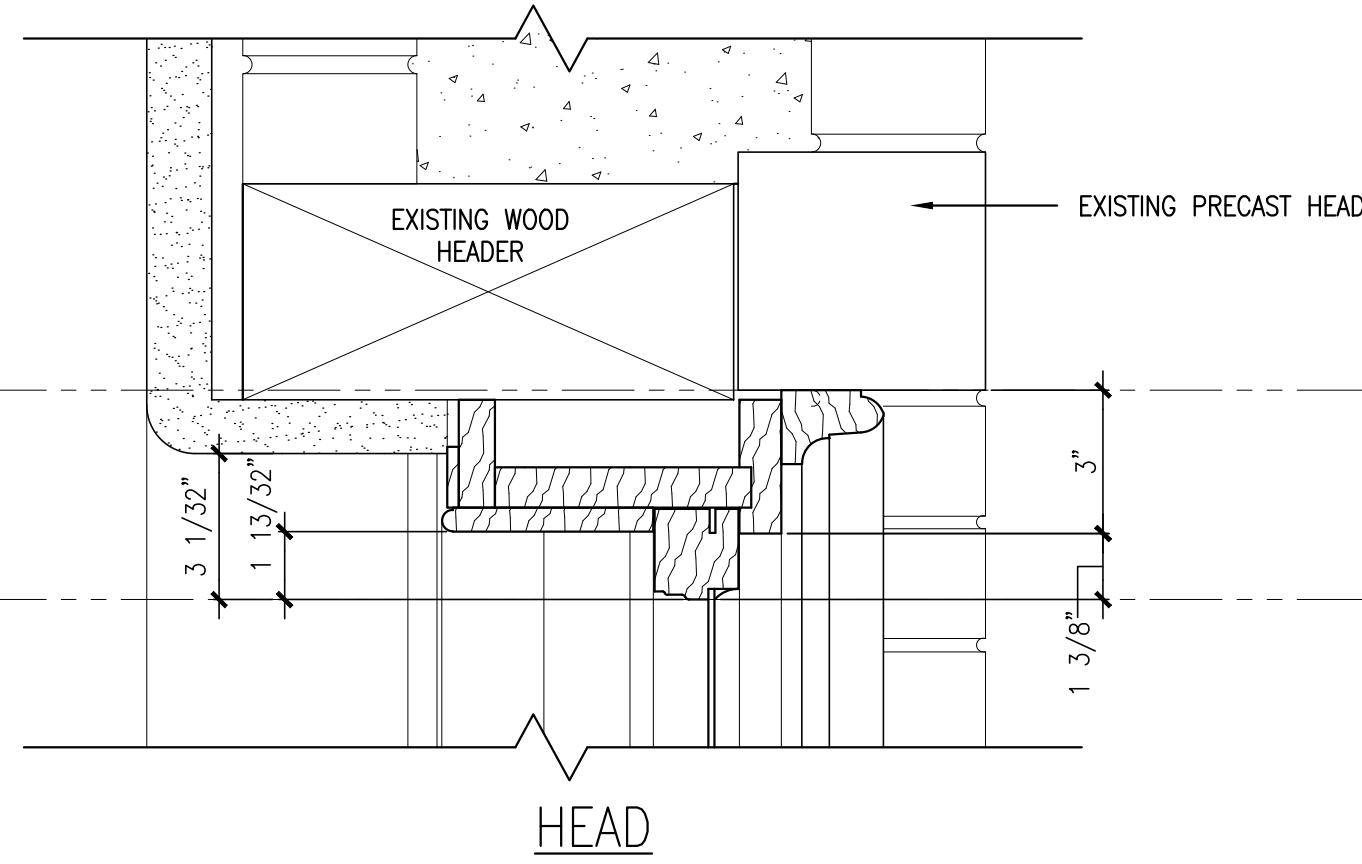
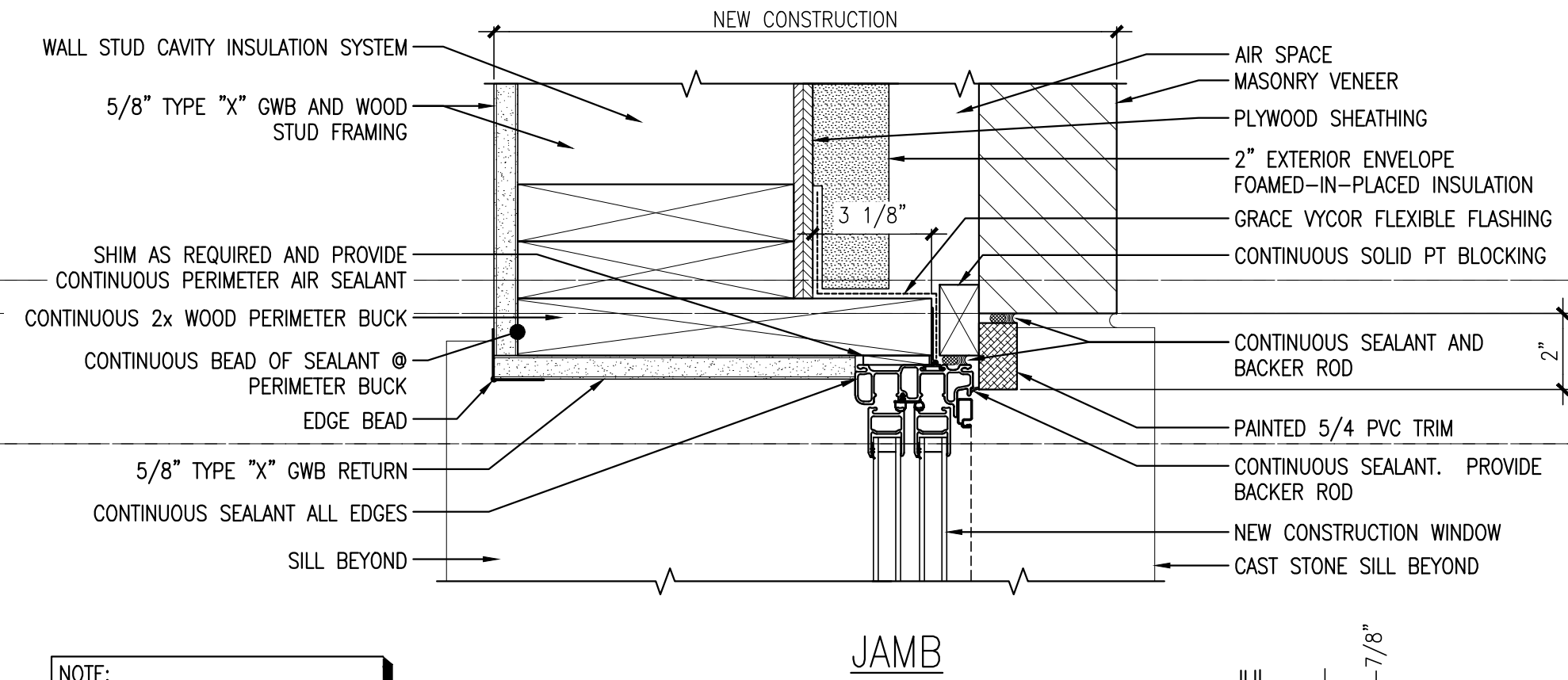
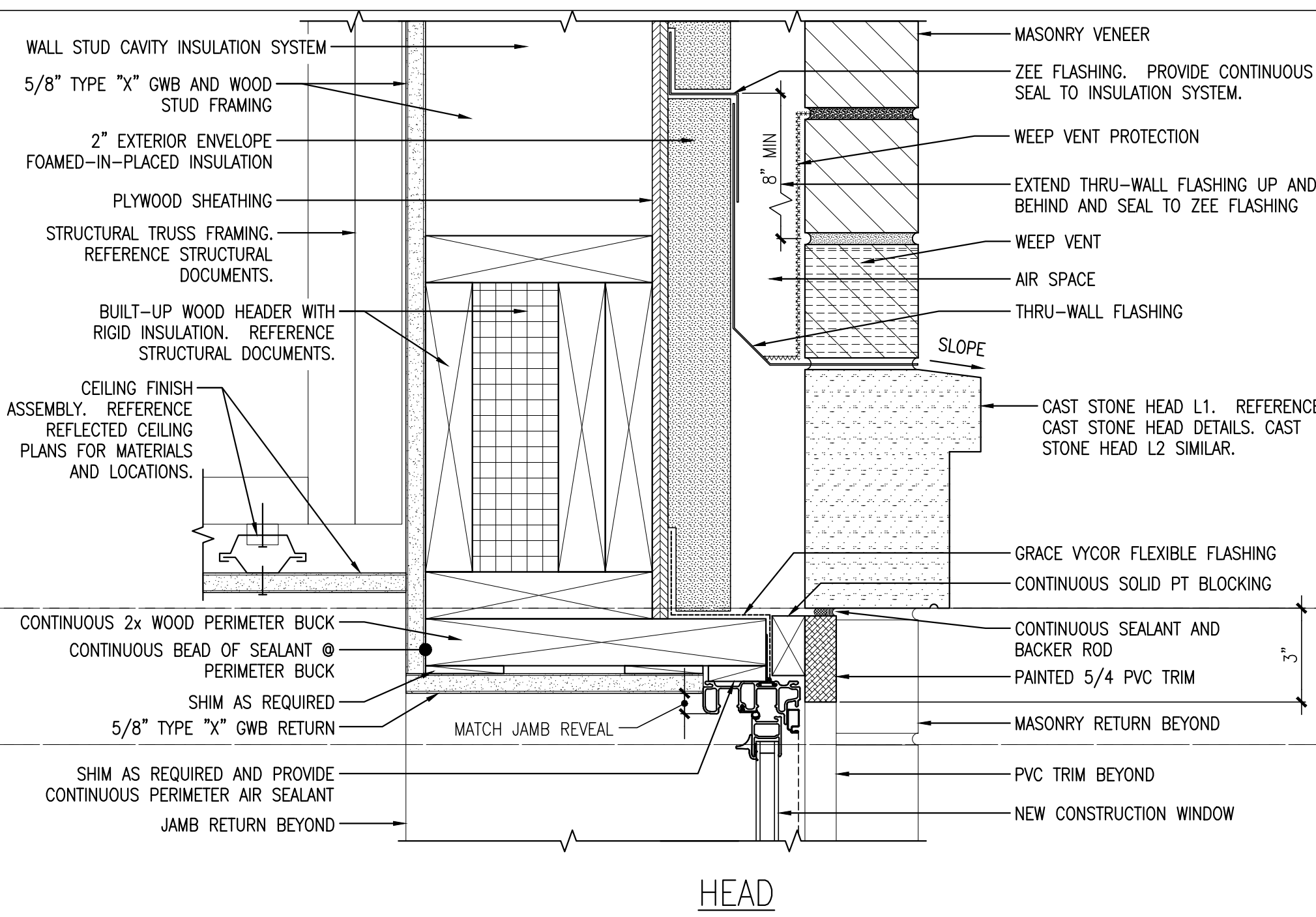


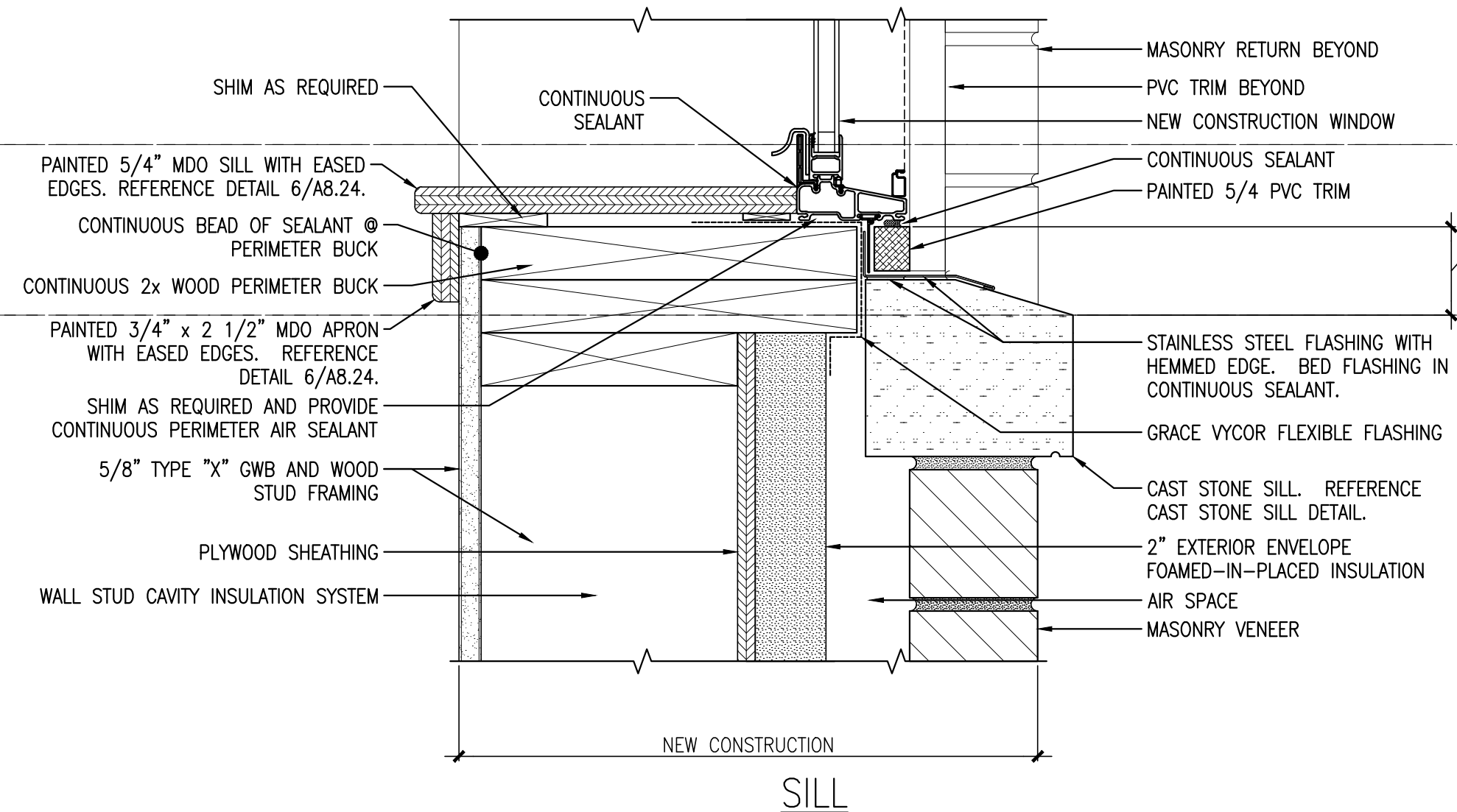
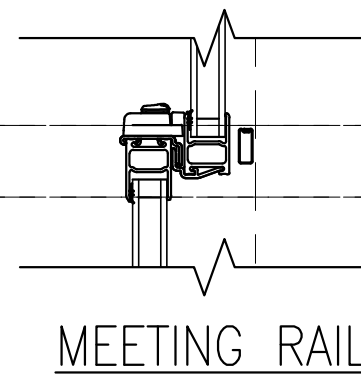
EXISTING FIELD DIMENSIONS INDICATED ARE APPROXIMATE AND ARE BASED UPON LIMITED SITE VERIFICATION. CONTRACTOR IS VERIFY ALL EXISTING DIMENSIONS AND CONDITIONS.



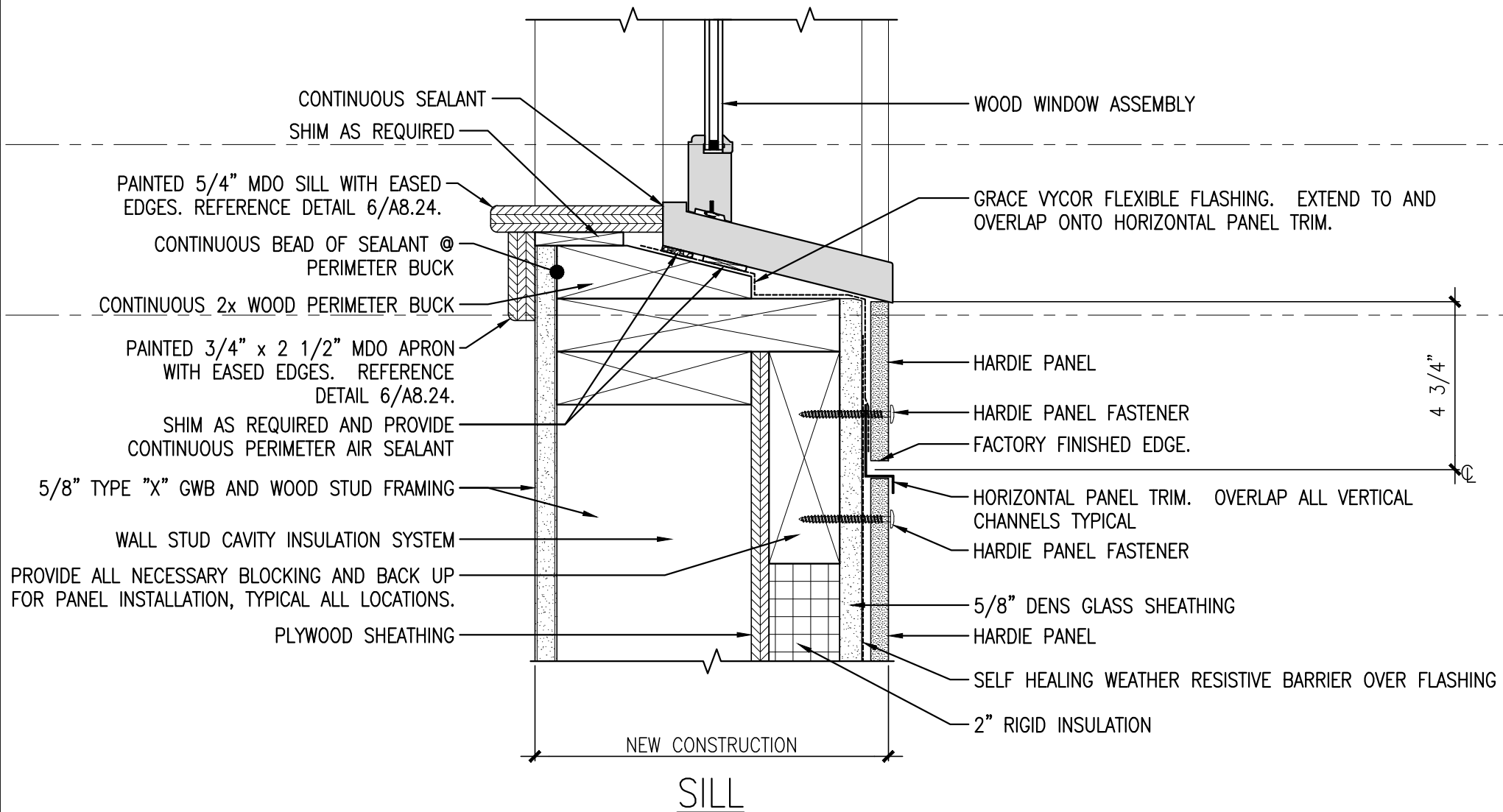
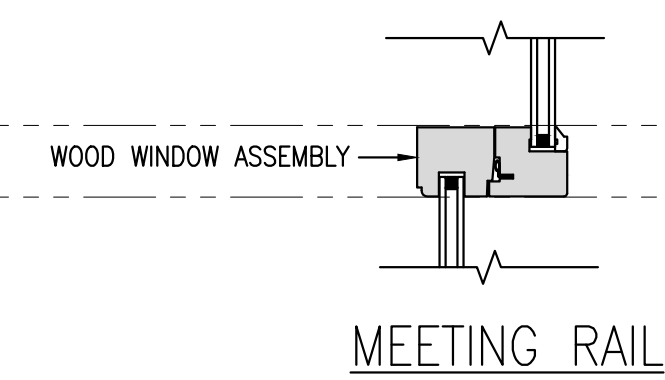
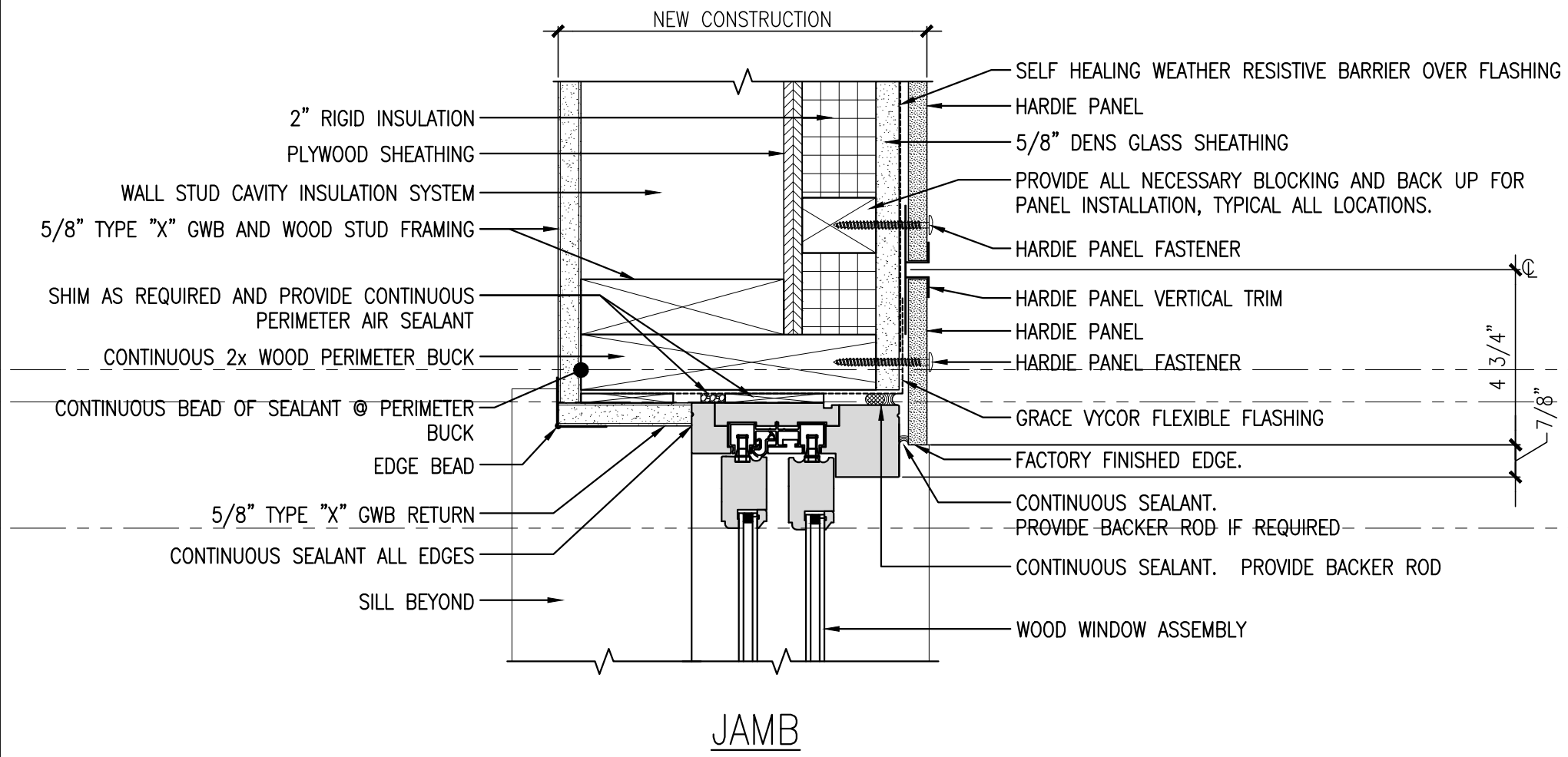
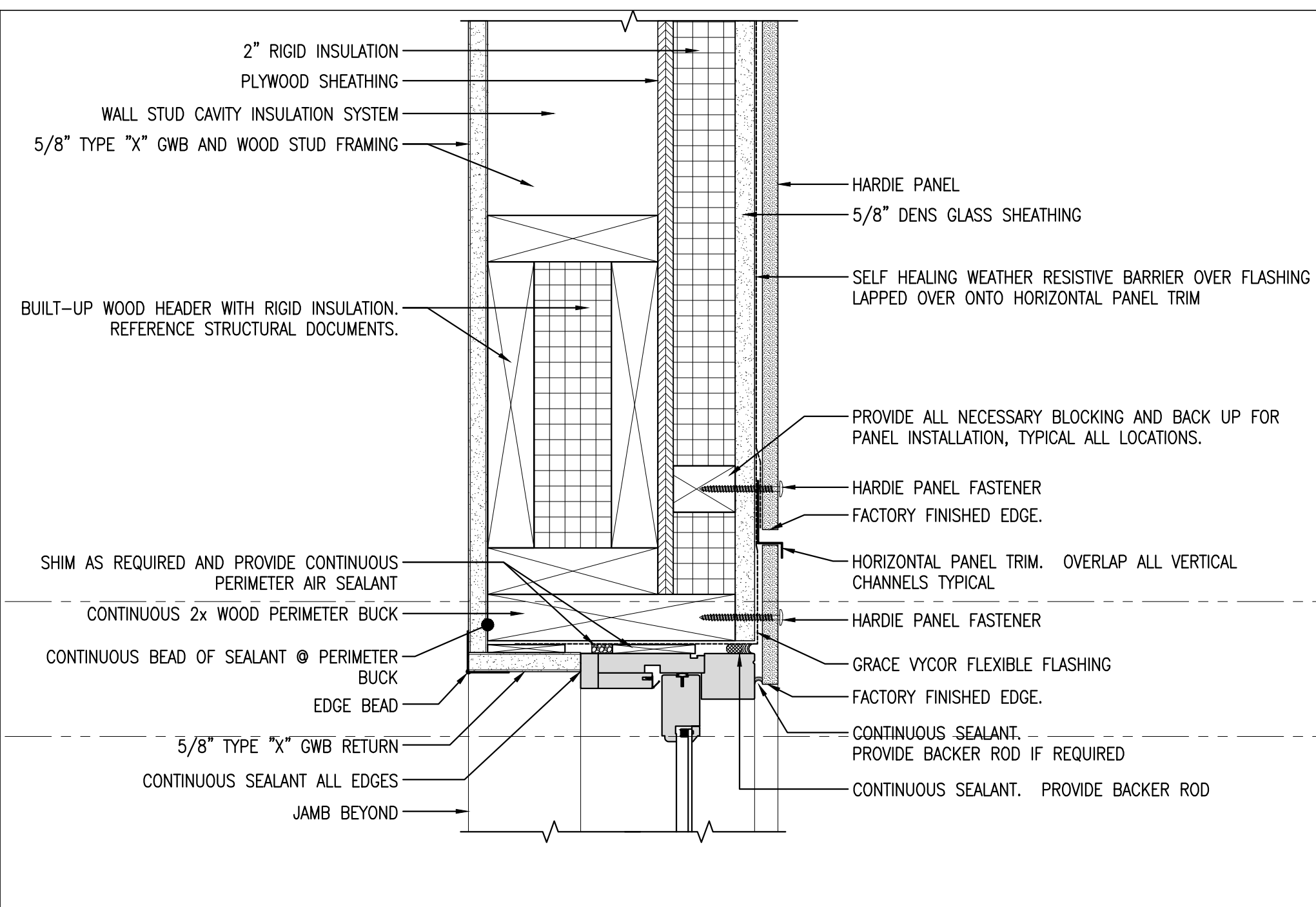
7 EXISTING CONDITION OF TYPICAL EXISTING WINDOW ASSEMBLY
REFERENCED FROM: SCALE: 3" = 1'-0"



NOTE:
AIR SEAL ALL GAPS AT WINDOW ASSEMBLY WITH APPROPRIATE AIR SEALING MATERIALS, TYPICAL.



8 FIBERGLASS WINDOW ASSEMBLY @ MASONRY WALL CONDITION
REFERENCED FROM: SCALE: 3" = 1'-0"



9 WOOD WINDOW @ FIBER CEMENT PANEL CONDITION
REFERENCED FROM: SCALE: 3" = 1'-0"

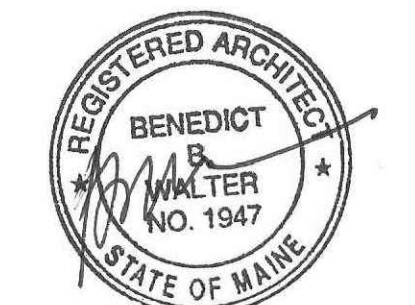


CWS Architects

Architecture
Space Planning
Value Design

434 Cumberland Avenue
Portland, ME 04101
Phone: (207)774-4441
Fax: (207)774-4016

www.CWSarch.com



Owner:

Children's Hospital Housing Partners, LP
309 Cumberland Ave.
Suite 203
Portland, Maine 04101

CONSTRUCTION MANAGER:

WRIGHT-RYAN CONSTRUCTION
10 DANFORTH STREET
PORTLAND, ME 04101
TEL: (207) 773-3625

ELM TERRACE

68 HIGH STREET
PORTLAND, MAINE

Project No: 09428

Drawing Title:
WINDOW DETAILS

Scale: AS NOTED

Date: ISSUED SEPTEMBER 8, 2011

Revisions:

- MAINE HOUSING CONCEPT SUBMISSION 02-01-2011
- HISTORIC PRESERVATION SUBMISSION 03-23-2011
- 50% MANHOUSING REVIEW 04-01-2011
- 90% MANHOUSING REVIEW 06-03-2011
- NPS SUBMISSION 07-01-2011
- ISSUED SEPTEMBER 8, 2011

Drawing Number:

A8.26

9/7/2011 4:42 PM