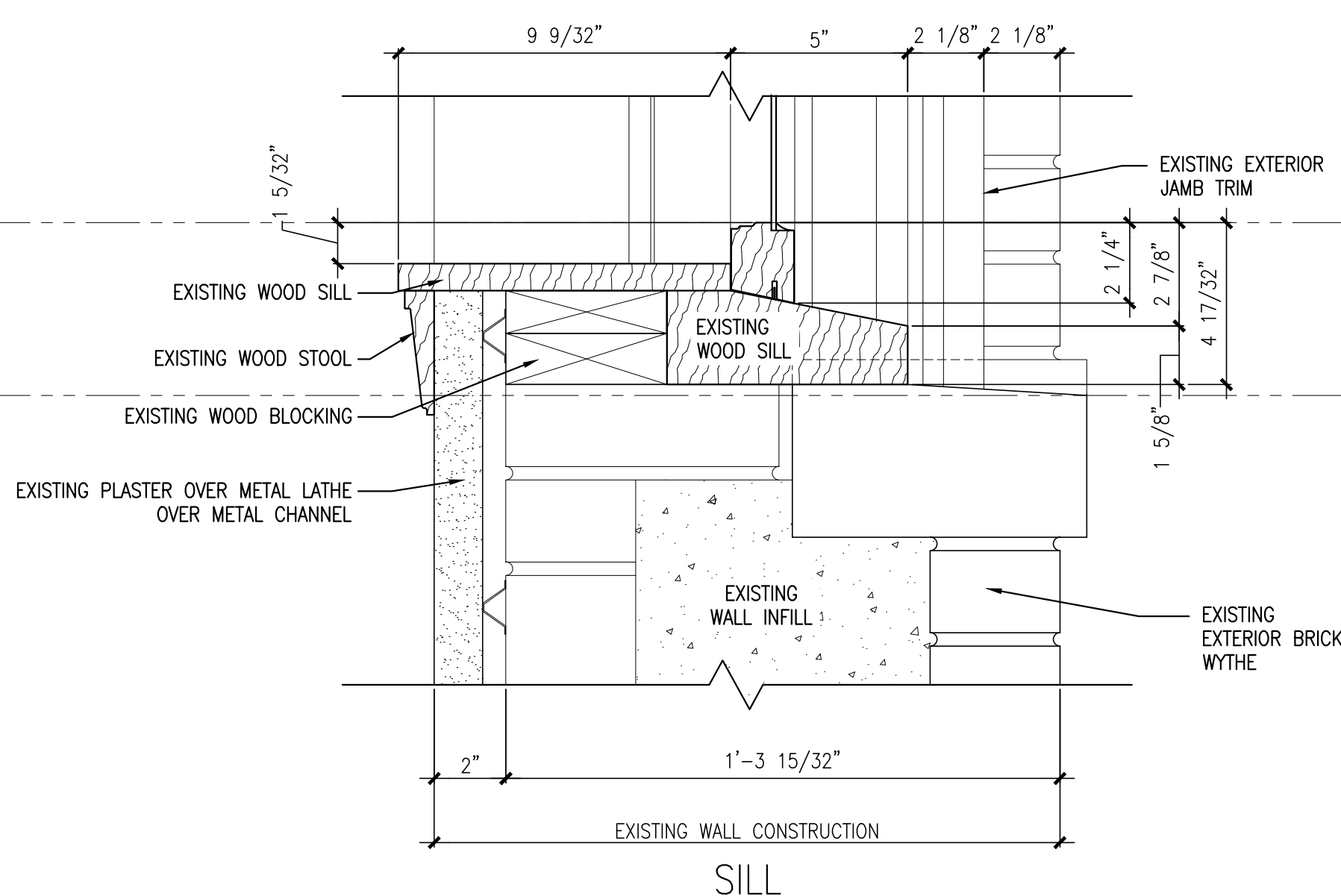
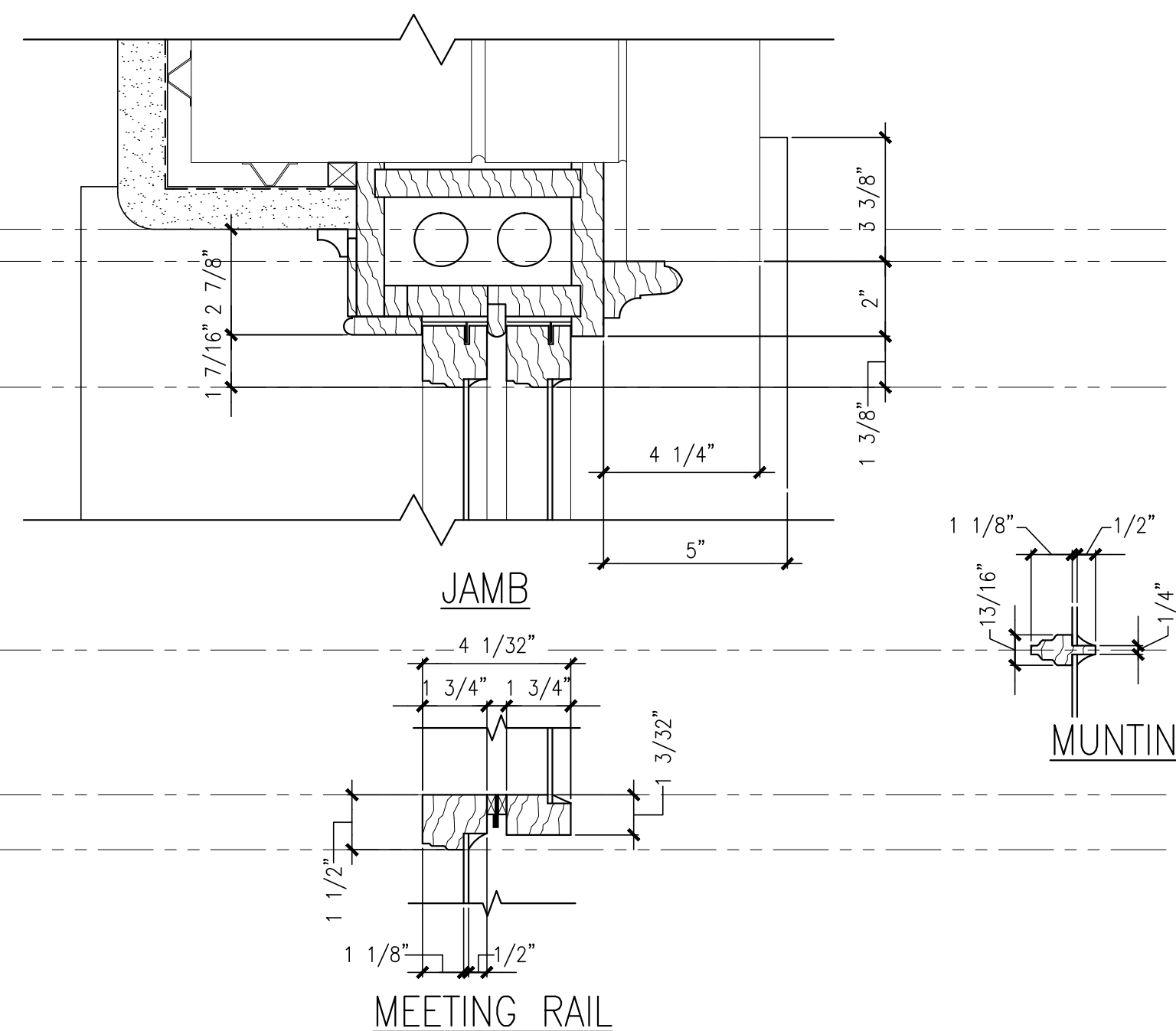
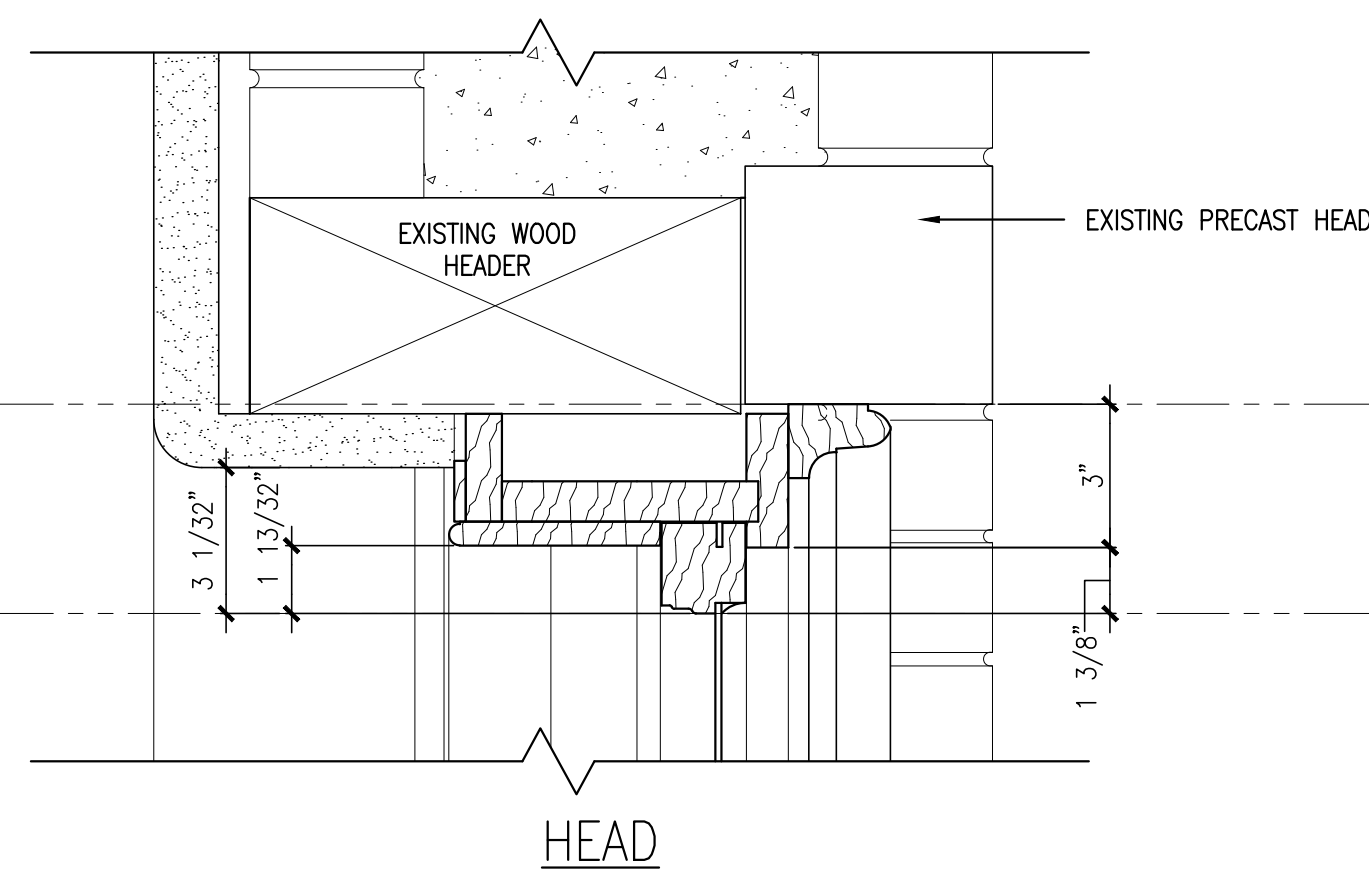
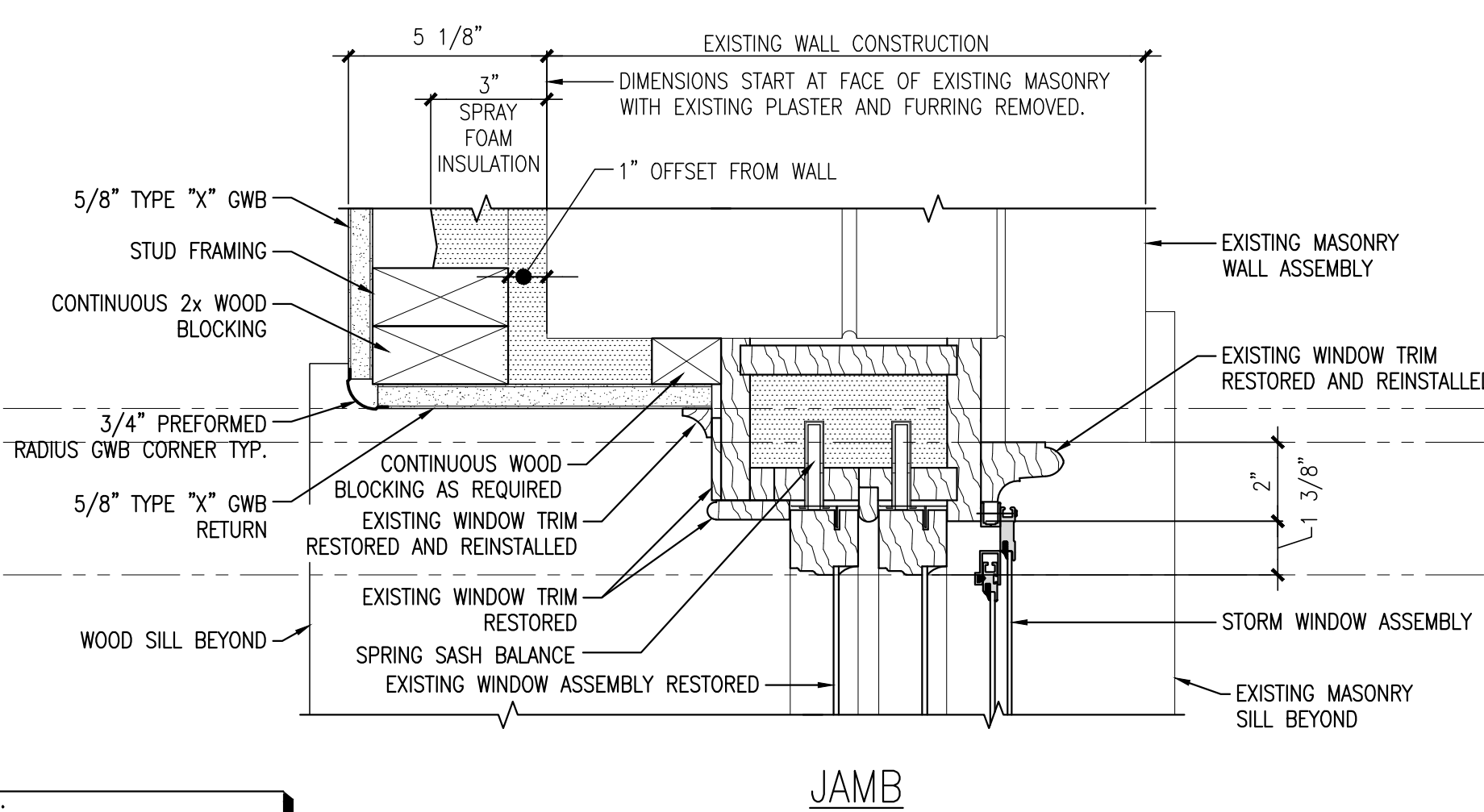
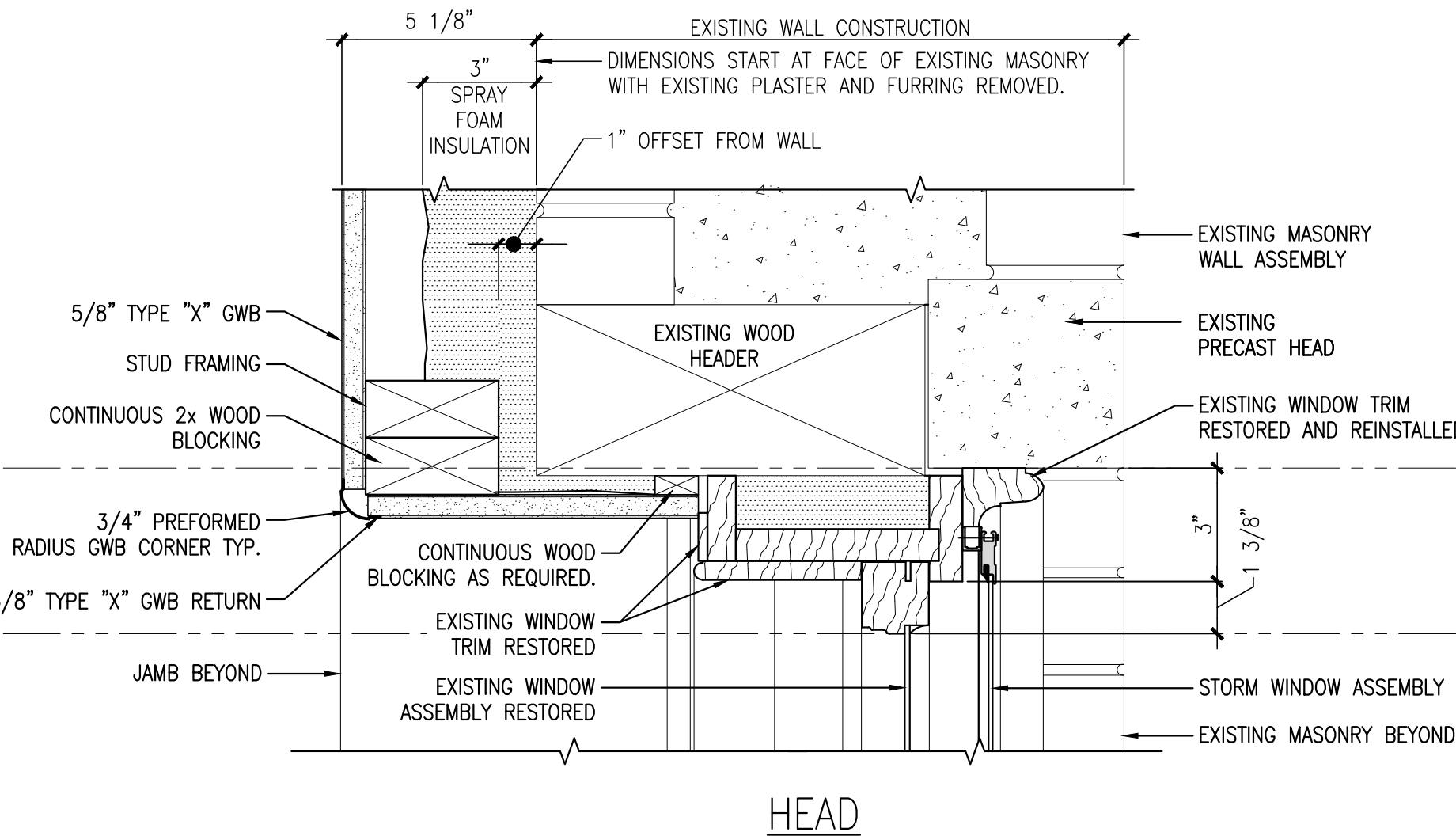


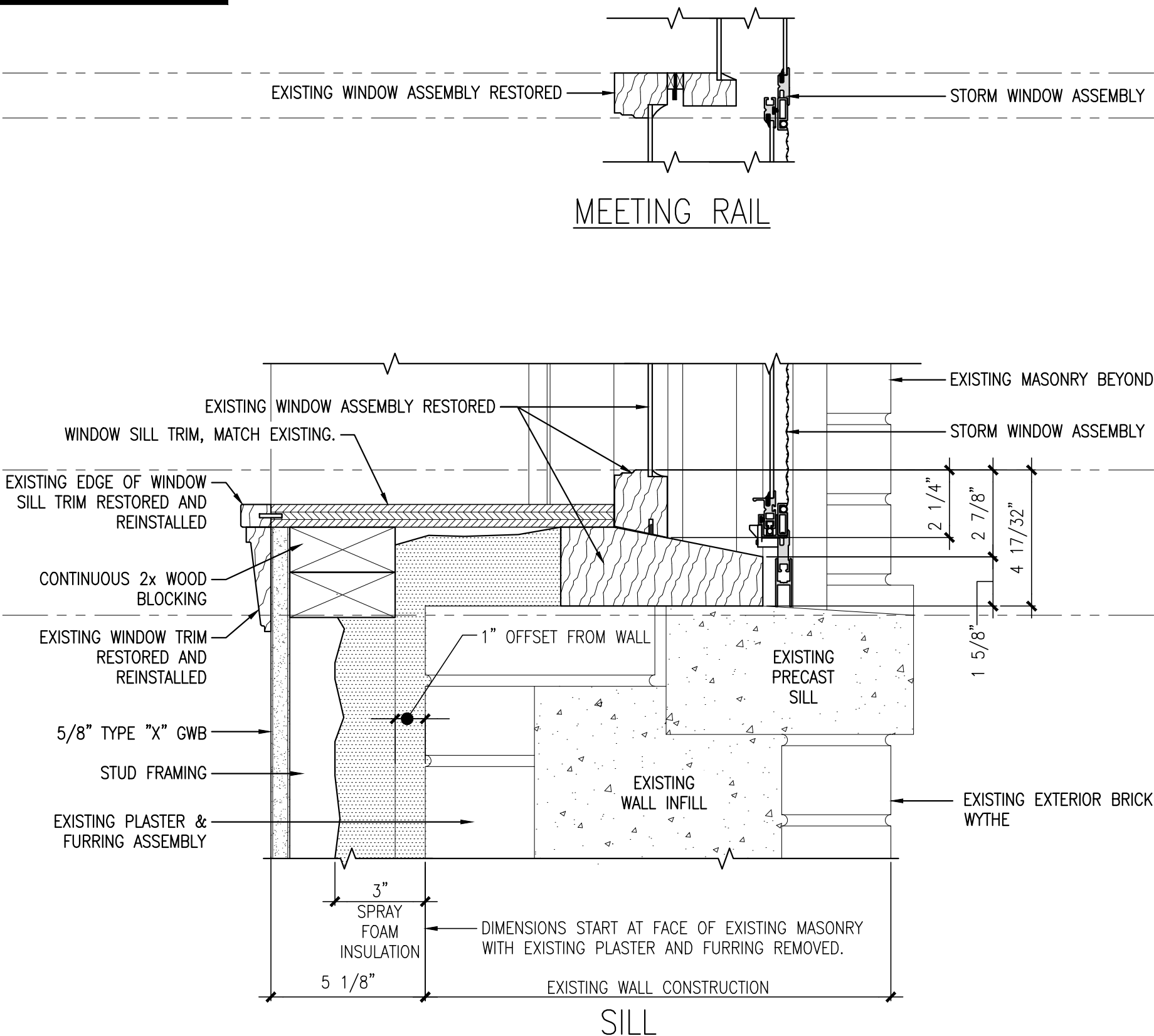
EXISTING FIELD DIMENSIONS INDICATED ARE APPROXIMATE AND ARE BASED UPON LIMITED SITE VERIFICATION. CONTRACTOR IS VERIFY ALL EXISTING DIMENSIONS AND CONDITIONS.



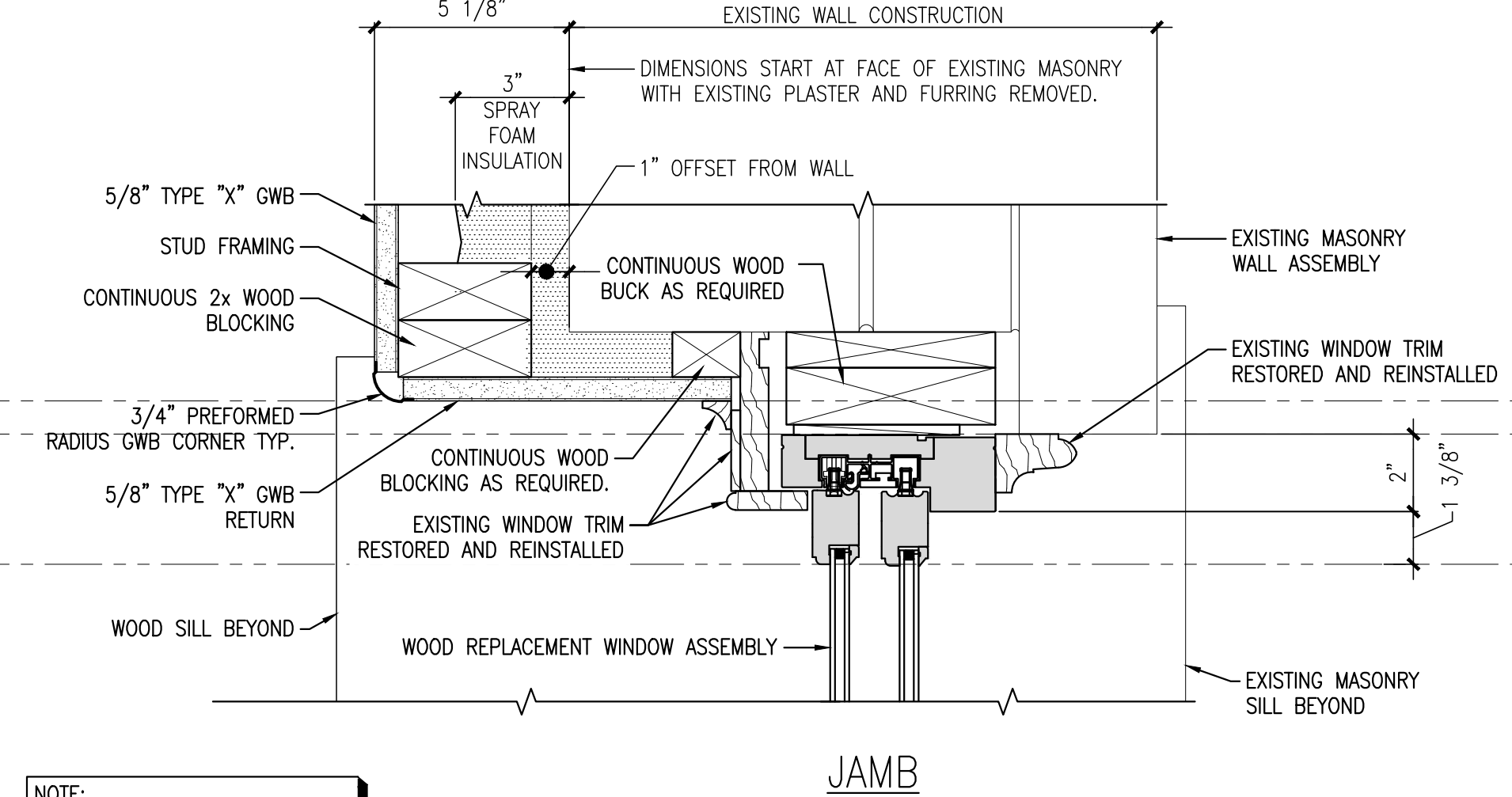
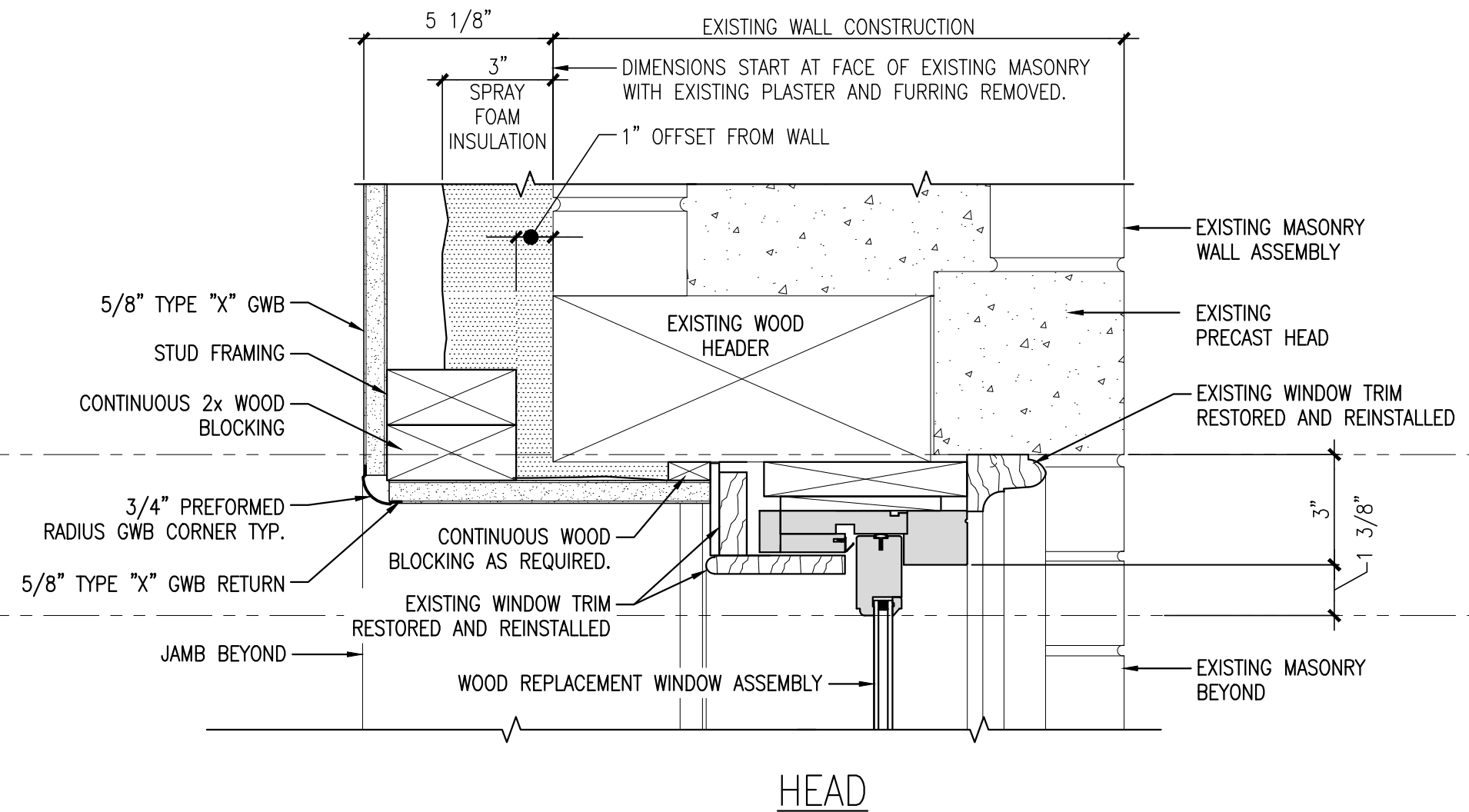
**7** EXISTING CONDITION OF TYPICAL EXISTING WINDOW ASSEMBLY  
REFERENCED FROM: SCALE: 3" = 1'-0"



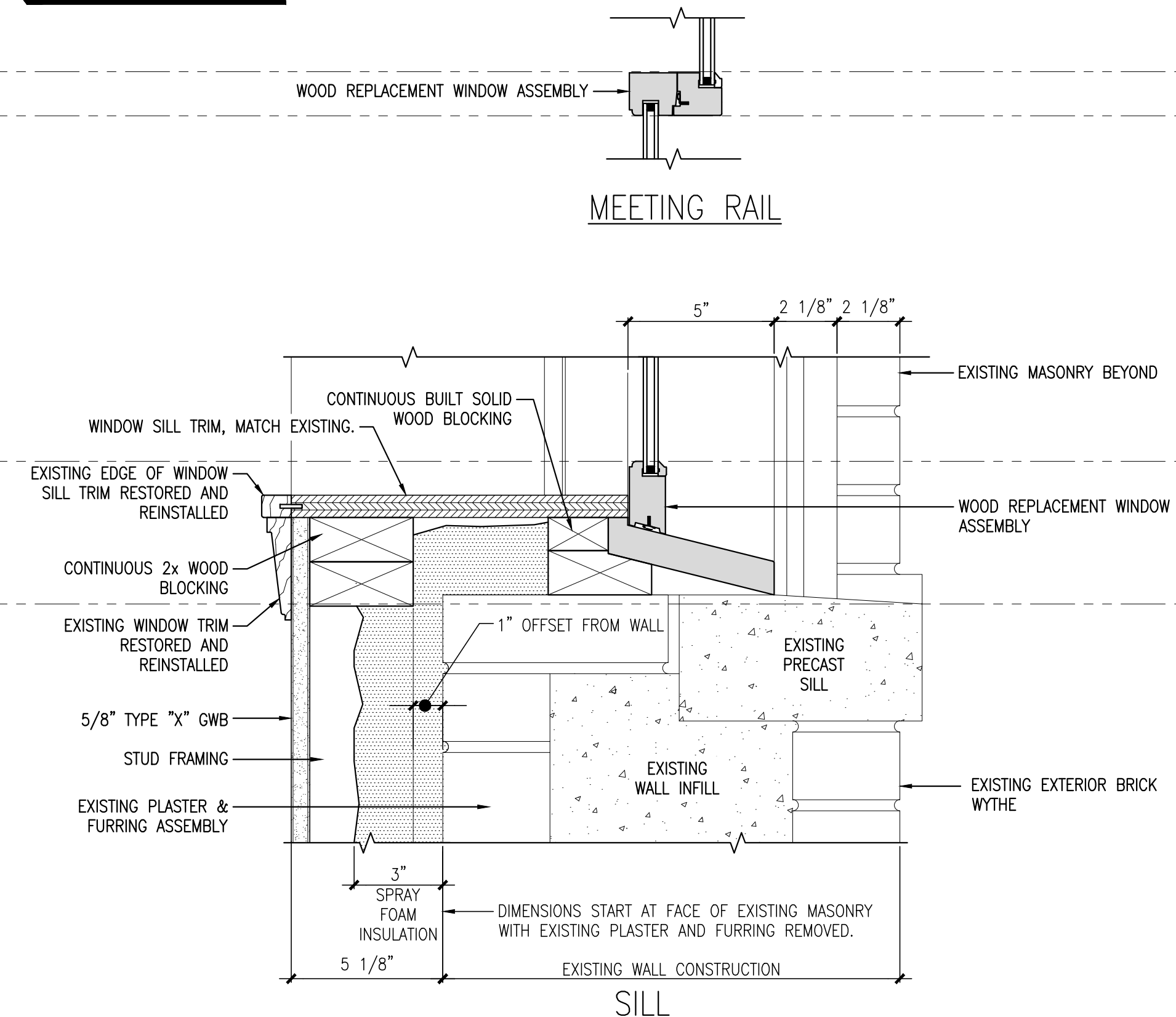
NOTE: AIR SEAL ALL GAPS AT WINDOW ASSEMBLY WITH APPROPRIATE AIR SEALING MATERIALS, TYPICAL.



**8** EXISTING WINDOW RESTORED W/ NEW EXTERIOR STORM WINDOW  
REFERENCED FROM: SCALE: 3" = 1'-0"



NOTE: AIR SEAL ALL GAPS AT WINDOW ASSEMBLY WITH APPROPRIATE AIR SEALING MATERIALS, TYPICAL.



**9** REPLACEMENT WINDOW IN EXISTING CONSTRUCTION OPENING  
REFERENCED FROM: SCALE: 3" = 1'-0"

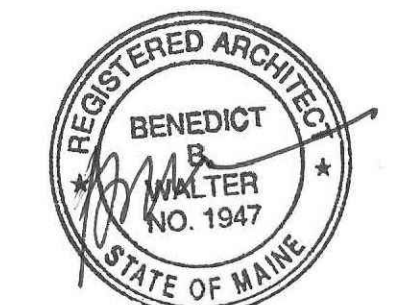


CWS Architects

Architecture  
Space Planning  
Value Design

434 Cumberland Avenue  
Portland, ME 04101  
Phone: (207)774-4441  
Fax: (207)774-4016

www.CWSarch.com



Owner:

**Children's Hospital Housing Partners, LP**  
309 Cumberland Ave.  
Suite 203  
Portland, Maine 04101

CONSTRUCTION MANAGER:

**WRIGHT-RYAN CONSTRUCTION**  
10 DANFORTH STREET  
PORTLAND, ME 04101  
TEL: (207) 773-3625

**ELM TERRACE**

68 HIGH STREET  
PORTLAND, MAINE

Project No: 09428

Drawing Title:  
**WINDOW DETAILS**

Scale: AS NOTED

Date: ISSUED SEPTEMBER 8, 2011

Revisions:

- △ MAINE HOUSING CONCEPT SUBMISSION 02-01-2011
- △ HISTORIC PRESERVATION SUBMISSION 03-23-2011
- △ 50% MAINEHOUSING REVIEW 04-01-2011
- △ 90% MAINEHOUSING REVIEW 06-03-2011
- △ NPS SUBMISSION 07-01-2011
- △ ISSUED SEPTEMBER 8, 2011

Drawing Number:

**A8.25**

9/8/2011 13:27 PM