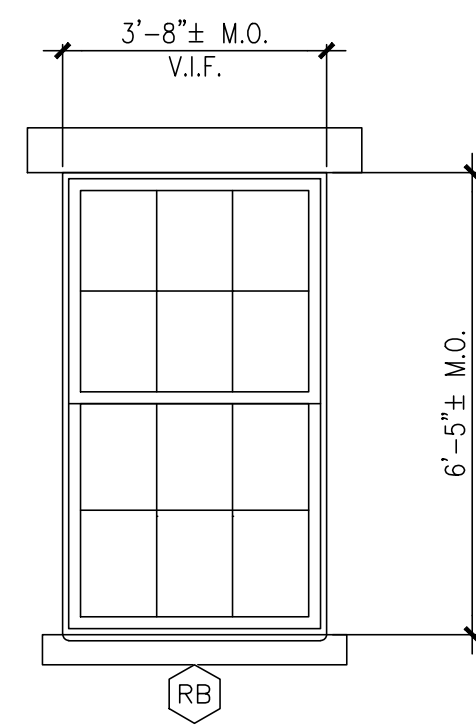
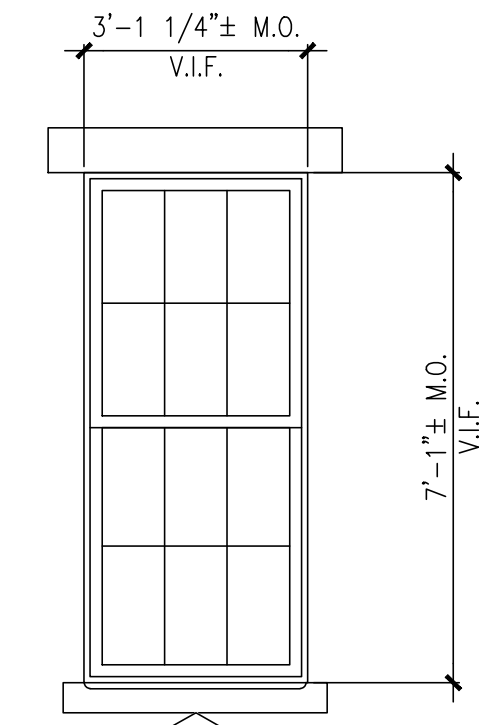


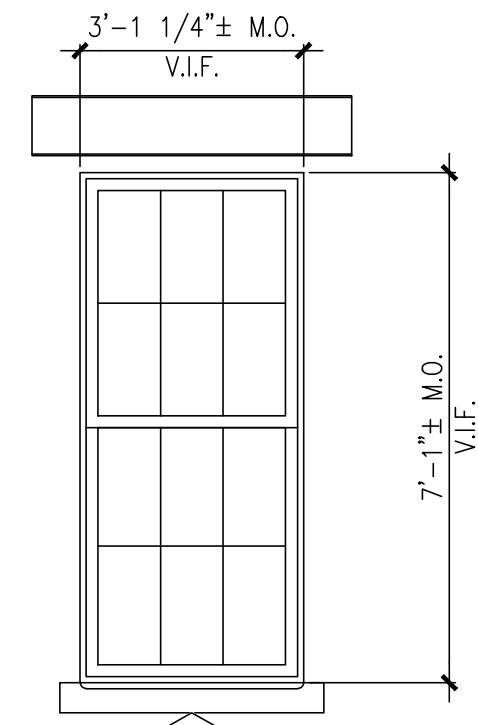
EXISTING DOUBLE HUNG WINDOW TO BE REMOVED AND REPLACED WITH PRE-FINISHED WOOD DOUBLE HUNG WINDOW



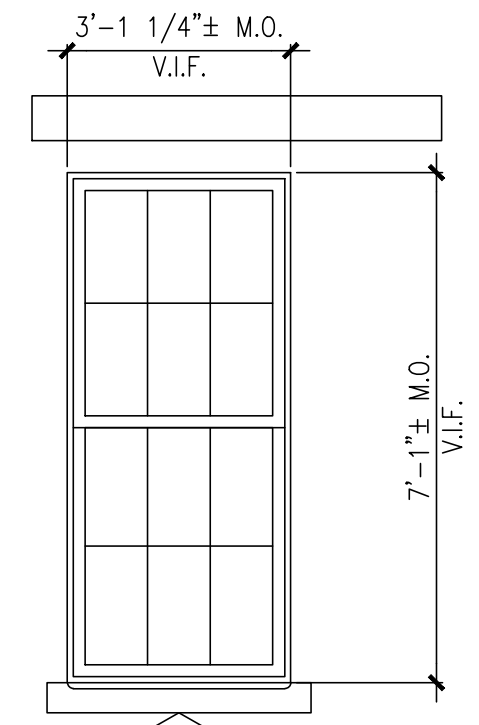
EXISTING DOUBLE HUNG WINDOW TO BE REMOVED AND REPLACED WITH PRE-FINISHED WOOD DOUBLE HUNG WINDOW



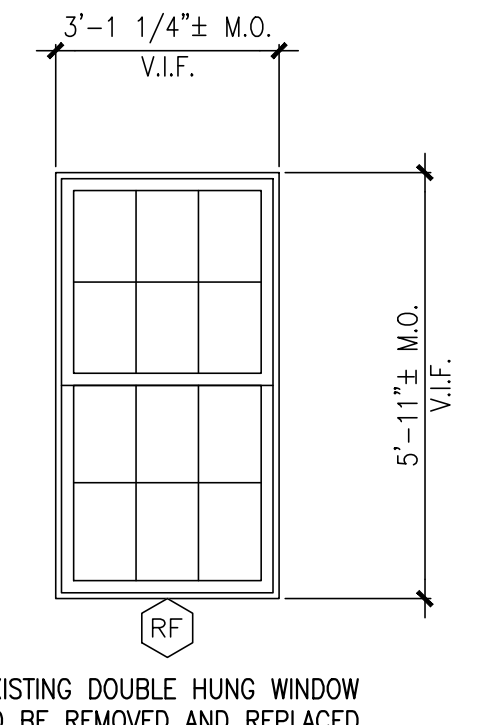
EXISTING DOUBLE HUNG WINDOW TO BE REMOVED AND REPLACED WITH PRE-FINISHED WOOD DOUBLE HUNG WINDOW



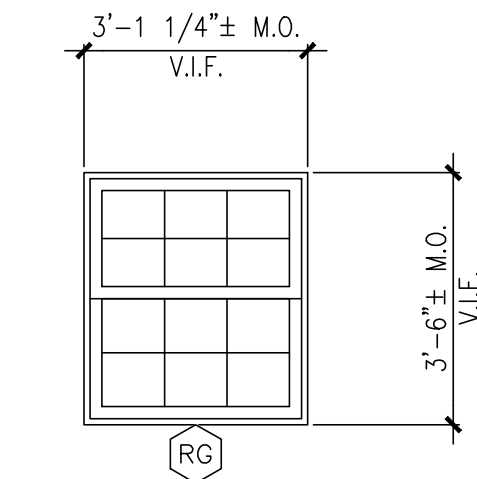
EXISTING DOUBLE HUNG WINDOW TO BE REMOVED AND REPLACED WITH PRE-FINISHED WOOD DOUBLE HUNG WINDOW



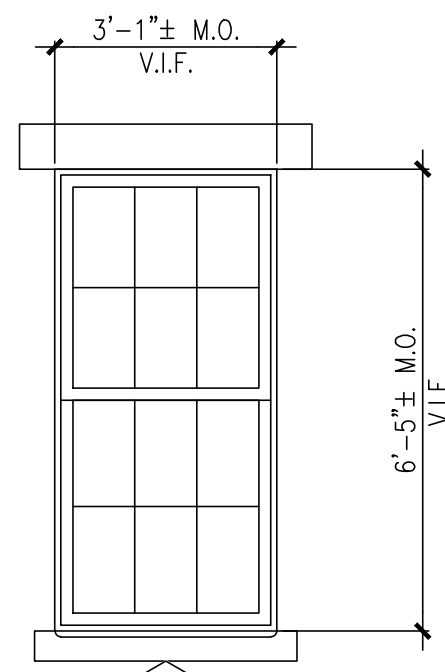
EXISTING DOUBLE HUNG WINDOW TO BE REMOVED AND REPLACED WITH PRE-FINISHED WOOD DOUBLE HUNG WINDOW



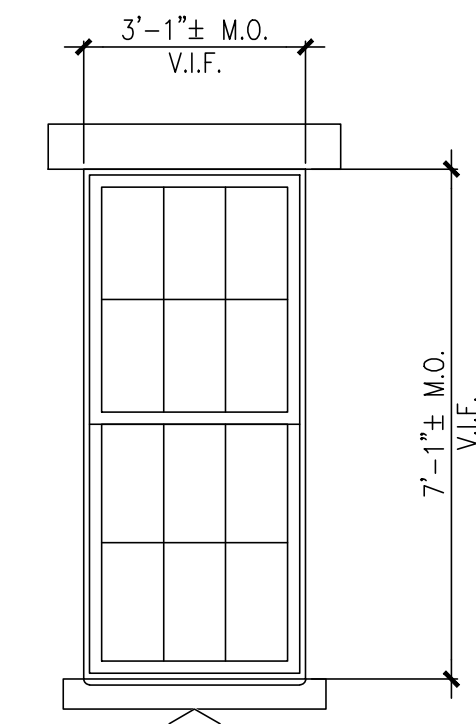
EXISTING DOUBLE HUNG WINDOW TO BE REMOVED AND REPLACED WITH PRE-FINISHED WOOD DOUBLE HUNG WINDOW



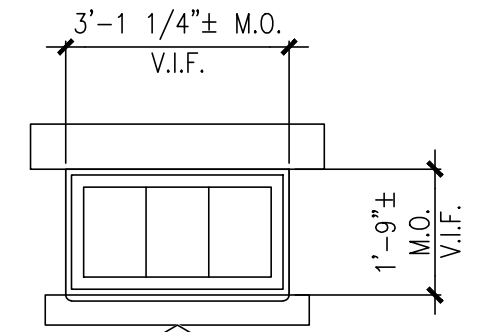
EXISTING DOUBLE HUNG WINDOW TO BE REMOVED AND REPLACED WITH PRE-FINISHED WOOD DOUBLE HUNG WINDOW



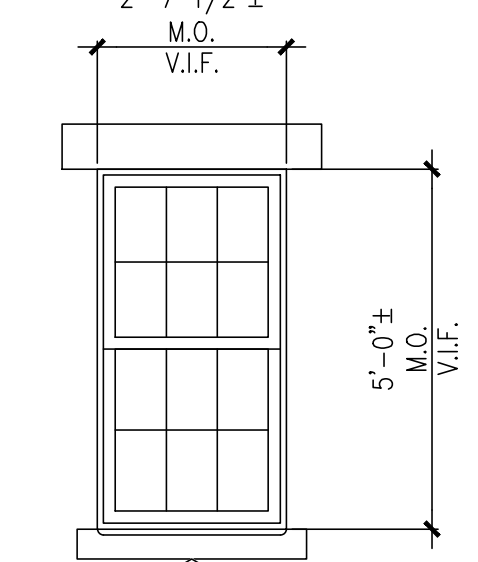
EXISTING DOUBLE HUNG WINDOW TO BE REMOVED AND REPLACED WITH PRE-FINISHED WOOD DOUBLE HUNG WINDOW



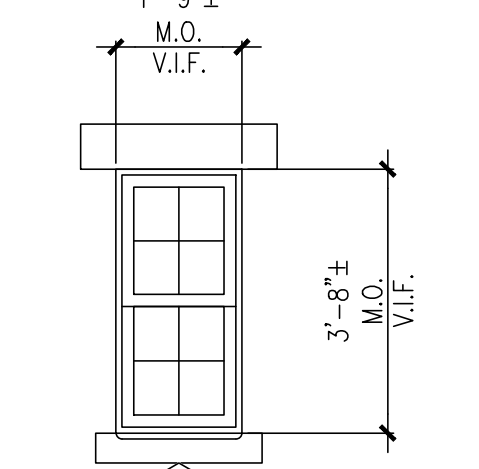
EXISTING DOUBLE HUNG WINDOW TO BE REMOVED AND REPLACED WITH PRE-FINISHED WOOD DOUBLE HUNG WINDOW



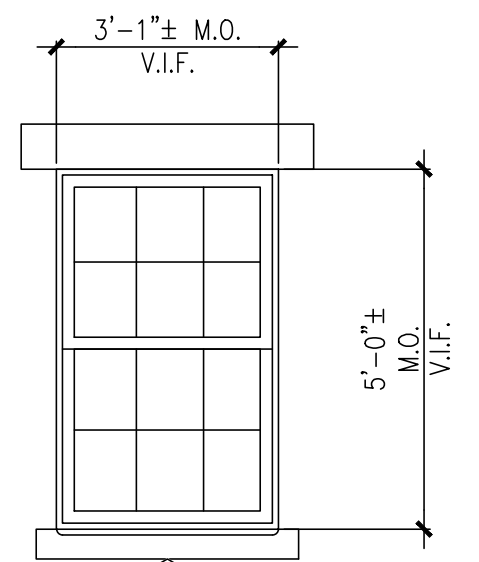
EXISTING INWARD SWING AWNING WINDOW TO BE REMOVED AND REPLACED WITH PRE-FINISHED WOOD INWARD SWING AWNING WINDOW



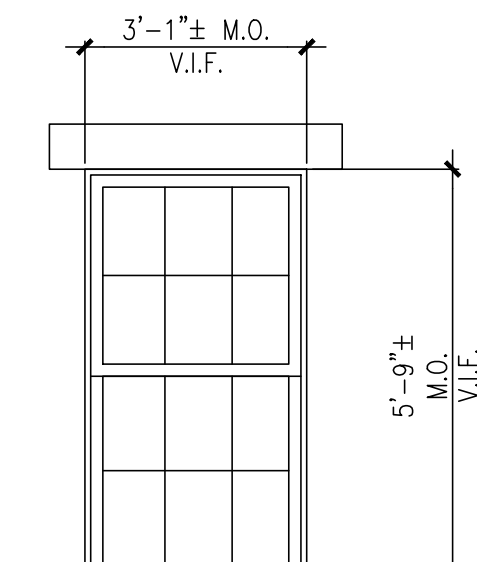
EXISTING DOUBLE HUNG WINDOW TO BE REMOVED AND REPLACED WITH PRE-FINISHED WOOD DOUBLE HUNG WINDOW



EXISTING DOUBLE HUNG WINDOW TO BE REMOVED AND REPLACED WITH PRE-FINISHED WOOD DOUBLE HUNG WINDOW



EXISTING DOUBLE HUNG WINDOW TO BE REMOVED AND REPLACED WITH PRE-FINISHED WOOD DOUBLE HUNG WINDOW

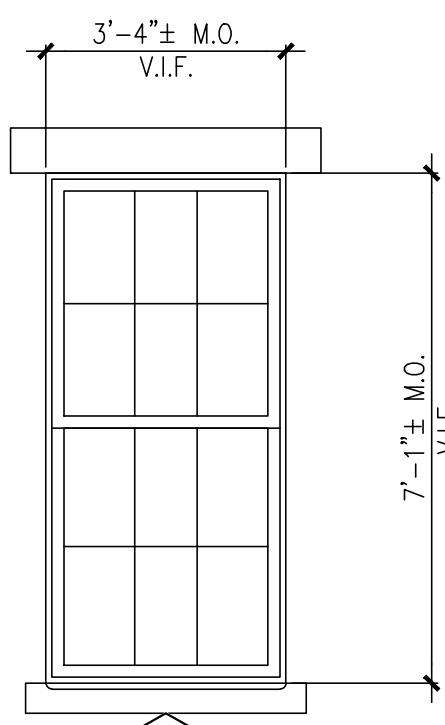


EXISTING DOUBLE HUNG WINDOW TO BE REMOVED AND REPLACED WITH PRE-FINISHED WOOD DOUBLE HUNG WINDOW

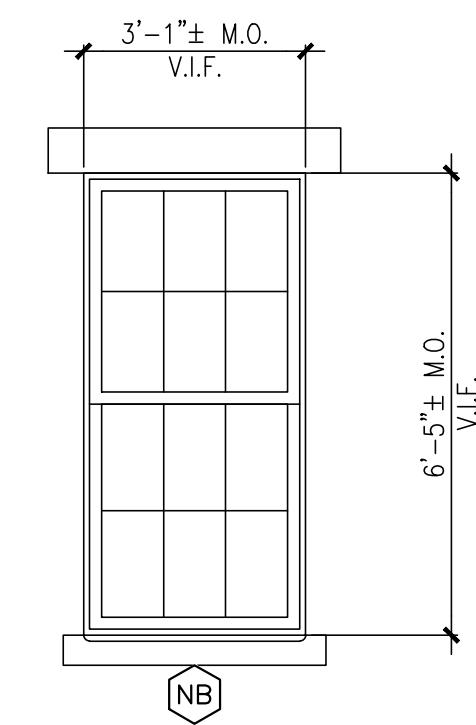
5 WINDOW ELEVATIONS - EXISTING BUILDING WINDOWS TO BE REPLACED

REFERENCED FROM:

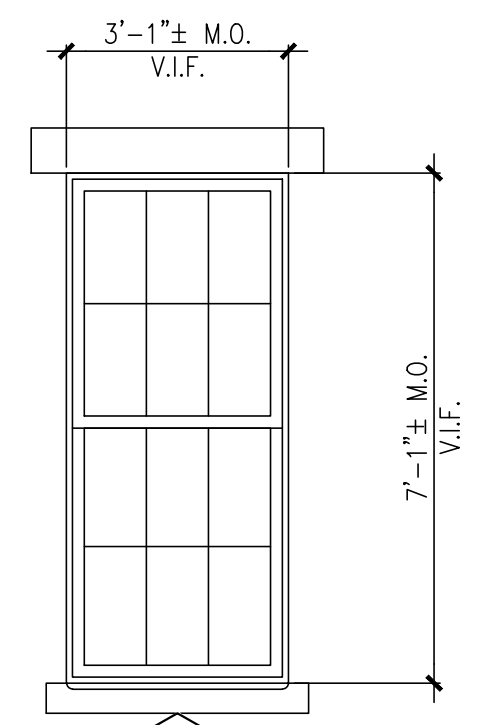
SCALE: 3/8" = 1'-0"



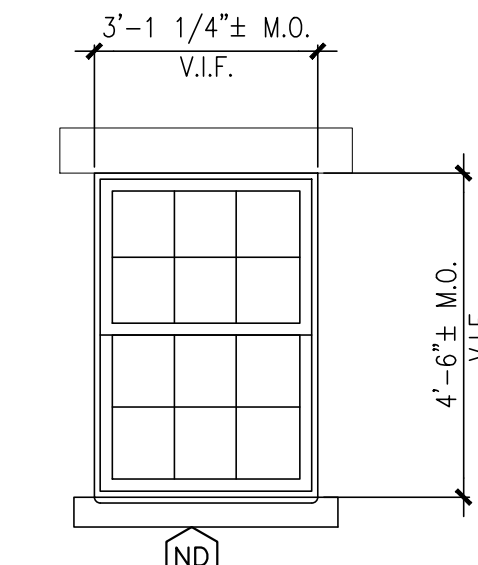
EXISTING DOOR ASSEMBLY TO BE REMOVED AND REPLACED WITH PRE-FINISHED WOOD DOUBLE HUNG WINDOW



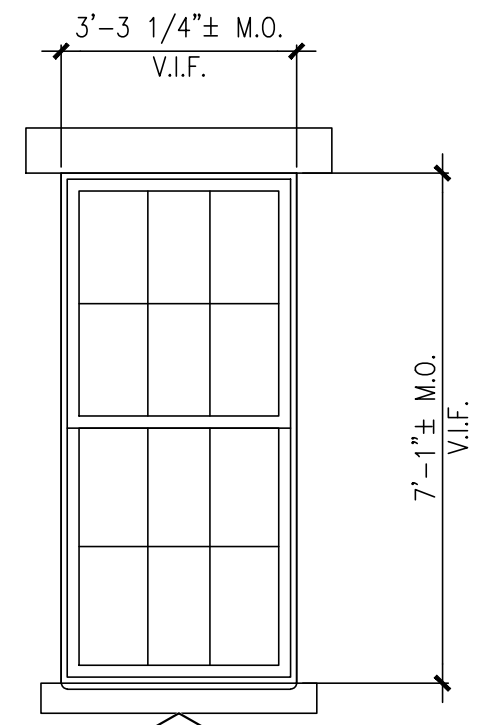
EXISTING DOOR ASSEMBLY TO BE REMOVED AND REPLACED WITH PRE-FINISHED WOOD DOUBLE HUNG WINDOW



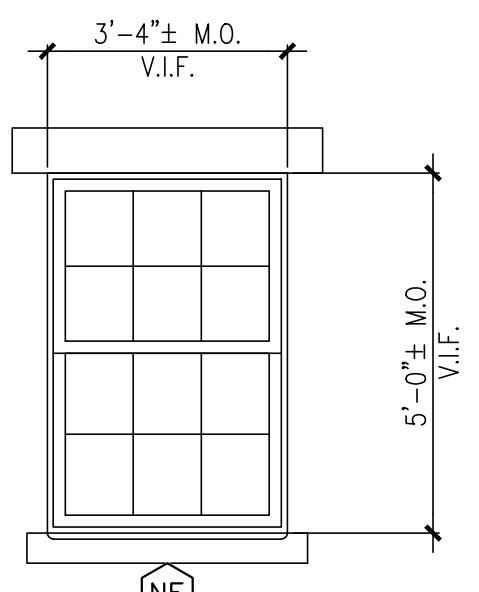
EXISTING BRICK INFILL OF AN EXISTING WINDOW OPENING TO BE REMOVED AND REPLACED WITH PRE-FINISHED WOOD DOUBLE HUNG WINDOW



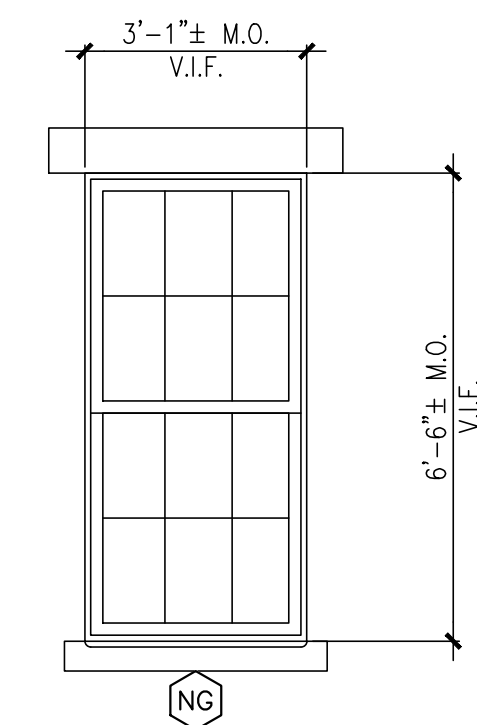
REMOVE EXISTING AWNING WINDOW OPENING AND PORTION OF MASONRY WALL BELOW AND REPLACED WITH PRE-FINISHED WOOD DOUBLE HUNG WINDOW



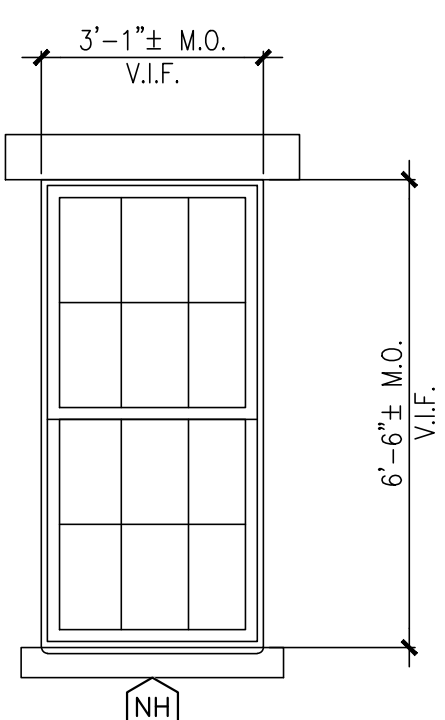
EXISTING DOOR ASSEMBLY TO BE REMOVED AND REPLACED WITH PRE-FINISHED WOOD DOUBLE HUNG WINDOW



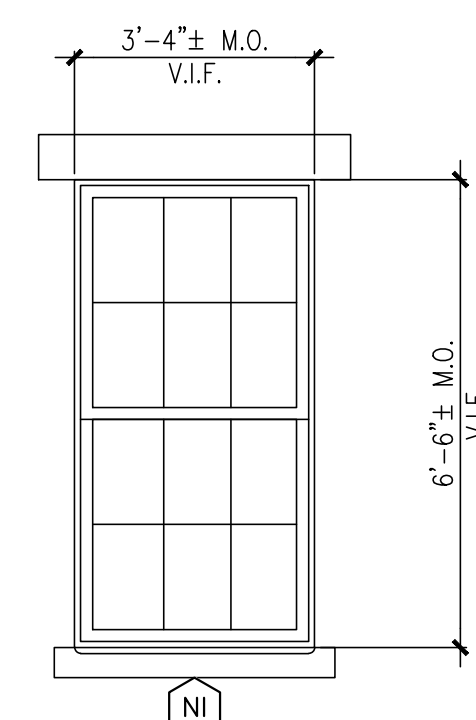
EXISTING DOOR ASSEMBLY TO BE REMOVED AND REPLACED WITH PRE-FINISHED WOOD DOUBLE HUNG WINDOW



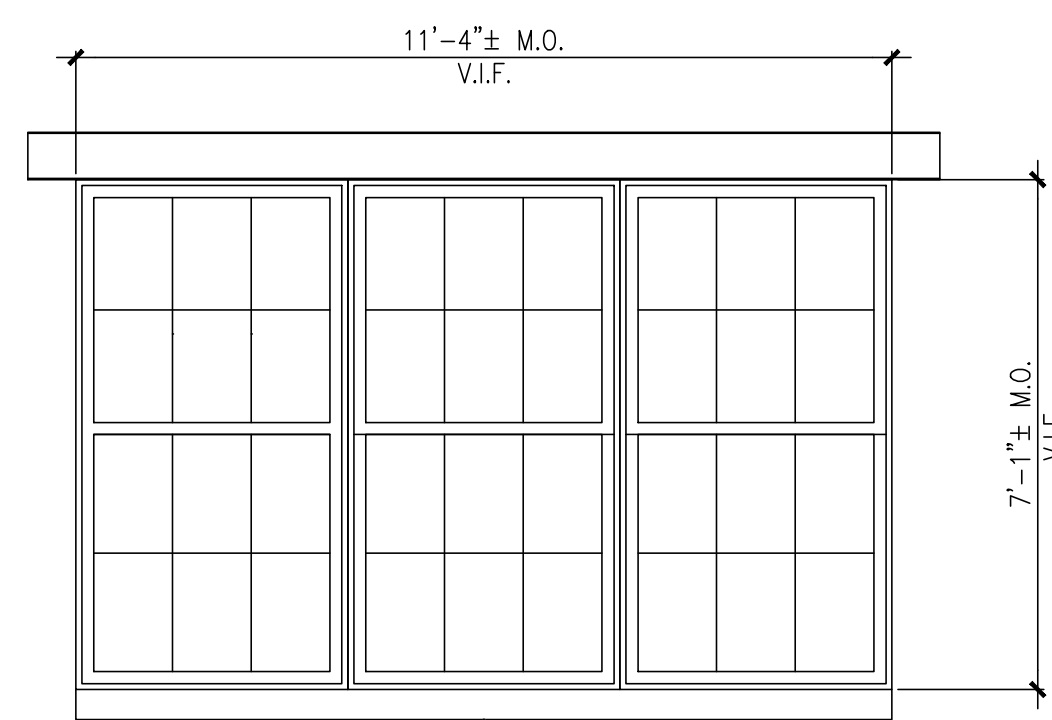
EXISTING BRICK INFILL OF AN EXISTING WINDOW OPENING TO BE REMOVED AND REPLACED WITH PRE-FINISHED WOOD DOUBLE HUNG WINDOW



EXISTING DOOR ASSEMBLY TO BE REMOVED AND REPLACED WITH PRE-FINISHED WOOD DOUBLE HUNG WINDOW



EXISTING BRICK INFILL OF AN EXISTING WINDOW OPENING TO BE REMOVED AND REPLACED WITH PRE-FINISHED WOOD DOUBLE HUNG WINDOW



REMOVE EXISTING DOUBLE HUNG TRIPLE WINDOWS OPENING AND REPLACED WITH PRE-FINISHED WOOD DOUBLE HUNG TRIPLE WINDOWS AND INFILL PORTION OF MASONRY WALL BELOW.

13 WINDOW ELEVATIONS - EXISTING OPENINGS TO BE REPLACED WITH NEW WINDOWS.

REFERENCED FROM:

SCALE: 3/8" = 1'-0"



CWS Architects

Architecture
Space Planning
Value Design

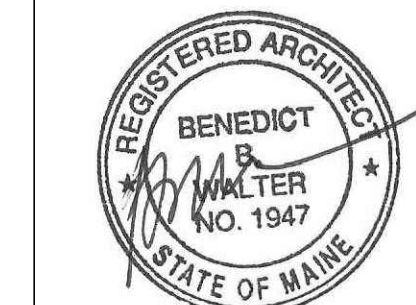
434 Cumberland Avenue

Portland, ME 04101

Phone: (207)774-4441

Fax: (207)774-4016

www.CWSarch.com



Owner:

**Children's
Hospital Housing
Partners, LP**

309 Cumberland Ave.

Suite 203

Portland, Maine 04101

CONSTRUCTION MANAGER:

**WRIGHT-RYAN
CONSTRUCTION**

10 DANFORTH STREET

PORTLAND, ME 04101

TEL: (207) 773-3625

**ELM
TERRACE**

68 HIGH STREET
PORTLAND, MAINE

Project No: 09428

Drawing Title:

**WINDOW
ELEVATIONS -
EXISTING BUILDING**

Scale: AS NOTED

Date: ISSUED SEPTEMBER 8, 2011

Revisions:

- △ MAINE HOUSING CONCEPT SUBMISSION 02-01-2011
- △ HISTORIC PRESERVATION SUBMISSION 03-23-2011
- △ 50% MAINEHOUSING REVIEW 04-01-2011
- △ 90% MAINEHOUSING REVIEW 06-03-2011
- △ NPS SUBMISSION 07-01-2011
- △ ISSUED SEPTEMBER 8, 2011

Drawing Number:

A8.22