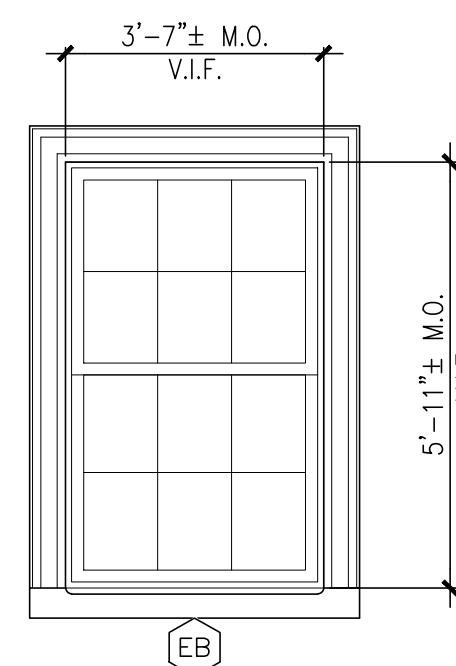
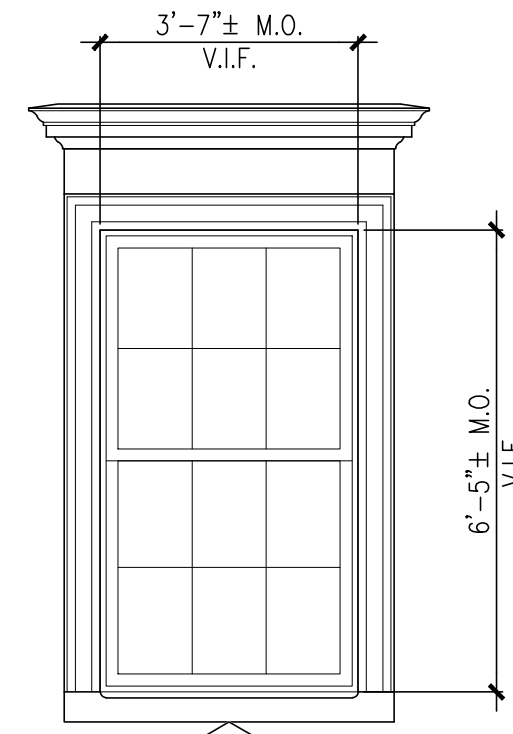


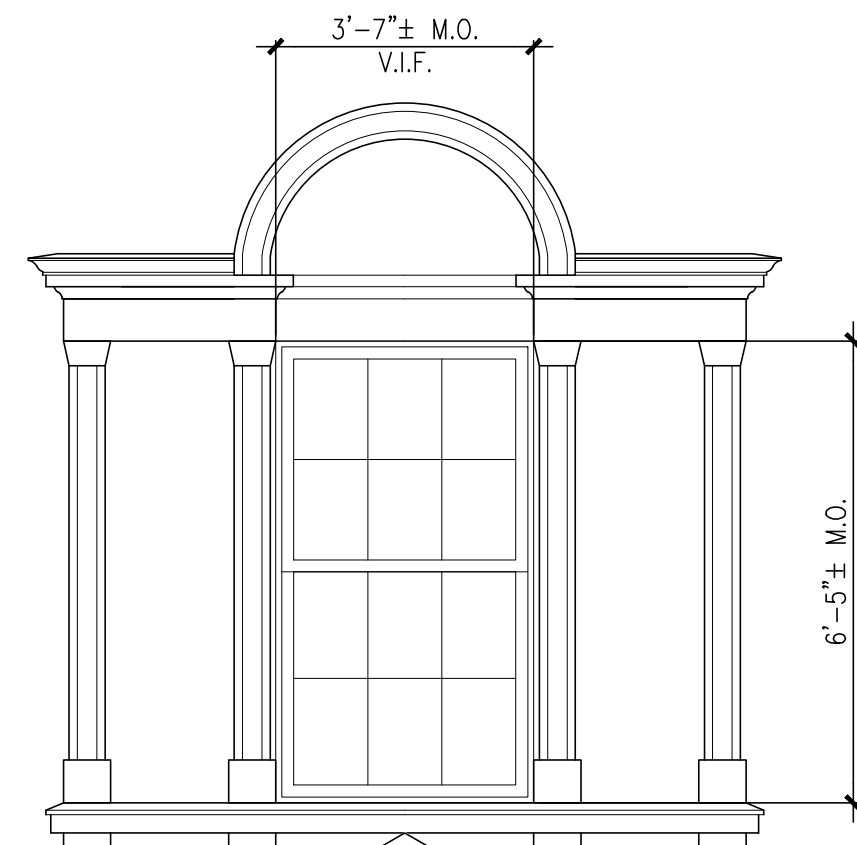
EXISTING DOUBLE HUNG WINDOW TO BE RESTORED AND FITTED WITH OPERABLE STORM WINDOW



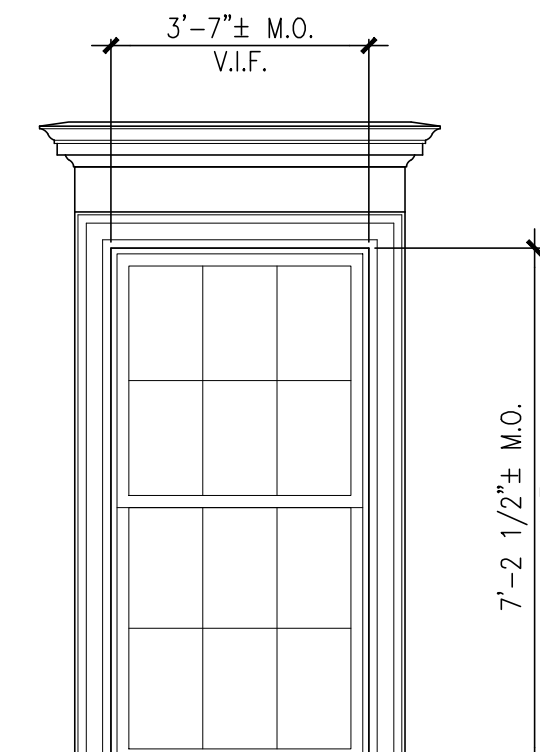
EXISTING DOUBLE HUNG WINDOW TO BE RESTORED AND FITTED WITH OPERABLE STORM WINDOW



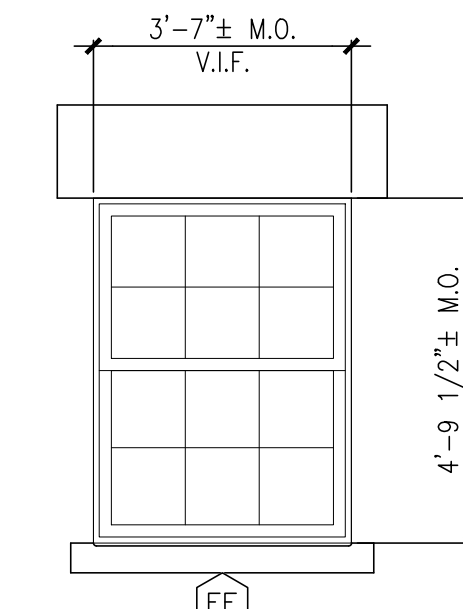
EXISTING DOUBLE HUNG WINDOW TO BE RESTORED AND FITTED WITH OPERABLE STORM WINDOW



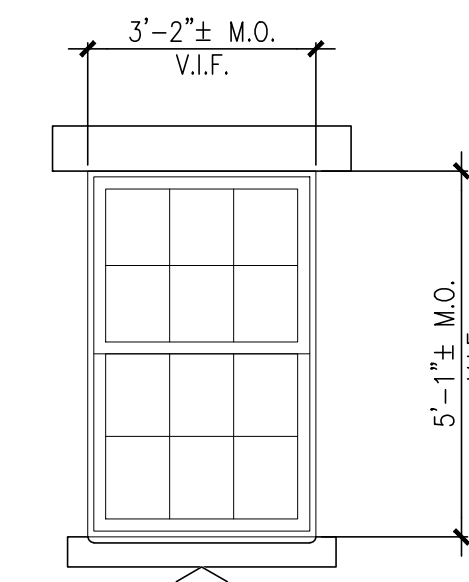
EXISTING DOUBLE HUNG WINDOW TO BE RESTORED AND FITTED WITH OPERABLE STORM WINDOW



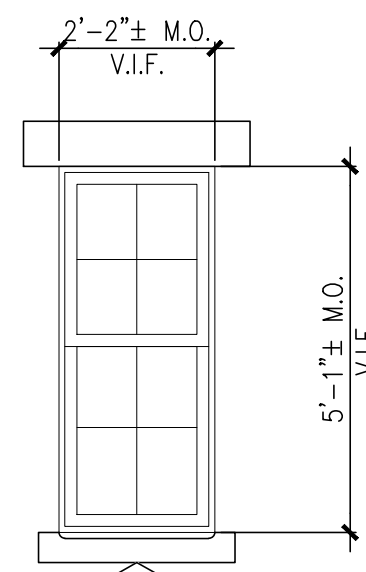
EXISTING DOUBLE HUNG WINDOW TO BE RESTORED AND FITTED WITH OPERABLE STORM WINDOW



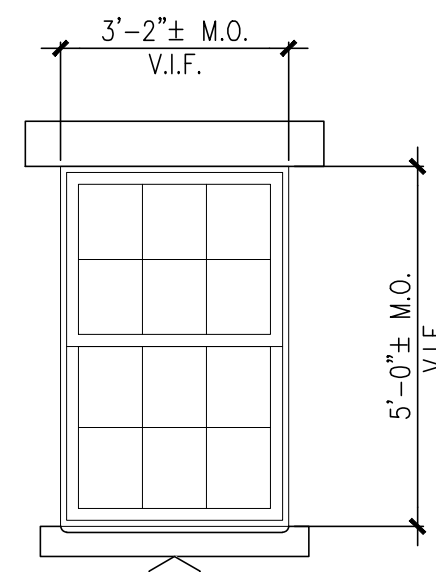
EXISTING DOUBLE HUNG WINDOW TO BE RESTORED AND FITTED WITH OPERABLE STORM WINDOW AND NEW PAINTED SECURITY SCREEN (TO MATCH EXISTING)



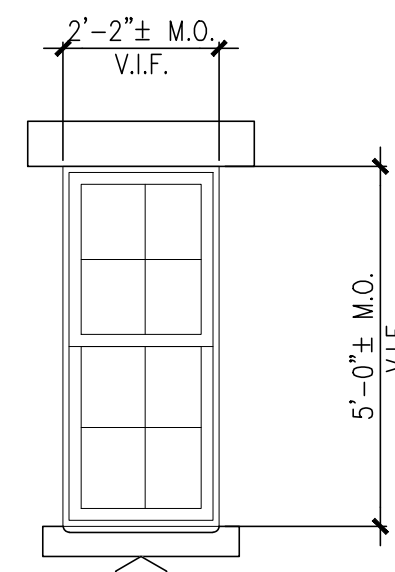
EXISTING DOUBLE HUNG WINDOW TO BE RESTORED AND FITTED WITH OPERABLE STORM WINDOW



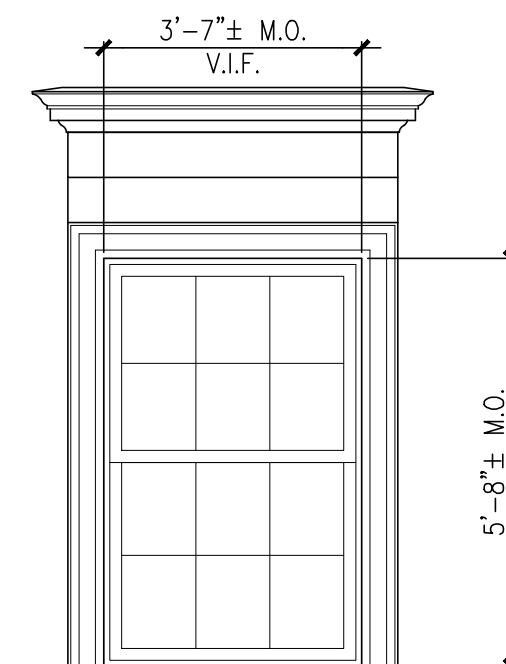
EXISTING DOUBLE HUNG WINDOW TO BE RESTORED AND FITTED WITH OPERABLE STORM WINDOW



EXISTING DOUBLE HUNG WINDOW TO BE RESTORED AND FITTED WITH OPERABLE STORM WINDOW



EXISTING DOUBLE HUNG WINDOW TO BE RESTORED AND FITTED WITH OPERABLE STORM WINDOW

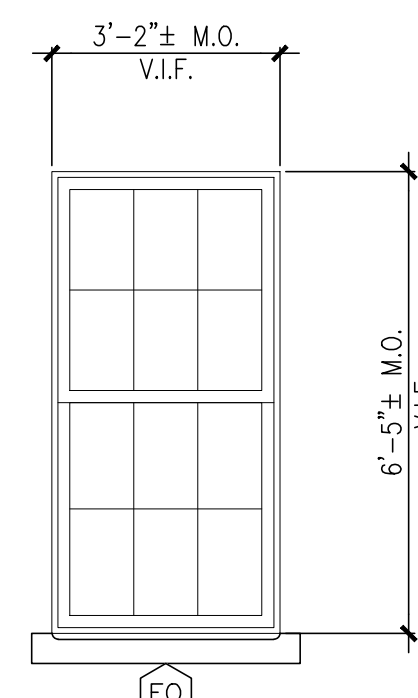


EXISTING DOUBLE HUNG WINDOW TO BE RESTORED AND FITTED WITH OPERABLE STORM WINDOW

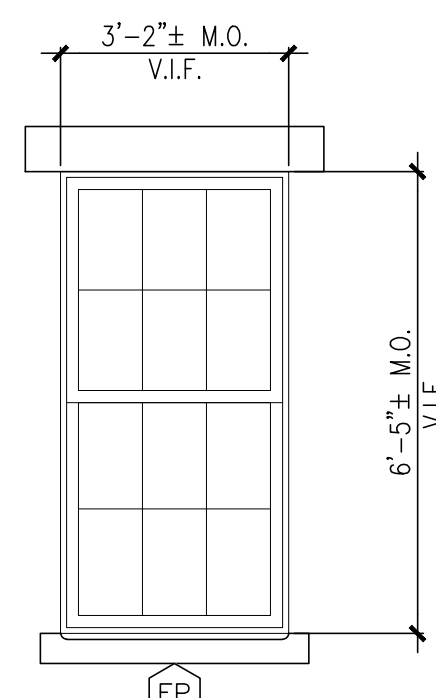
NOT USED

NOT USED

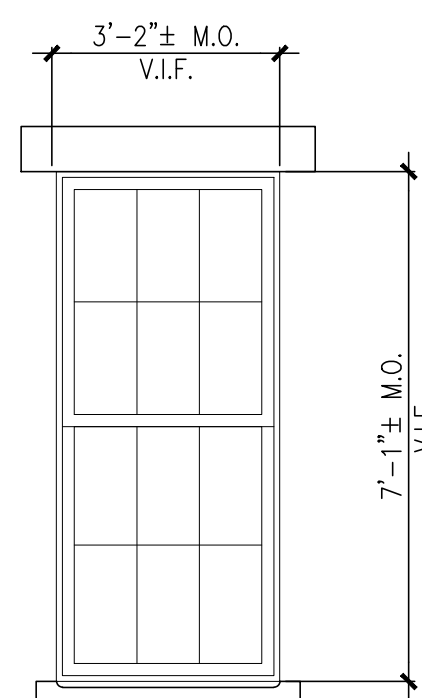
NOT USED



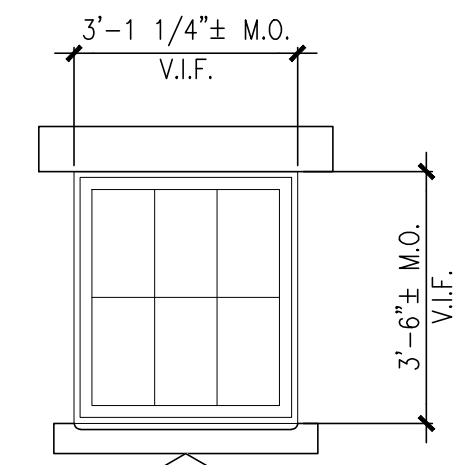
EXISTING DOUBLE HUNG WINDOW TO BE RESTORED AND FITTED WITH OPERABLE STORM WINDOW



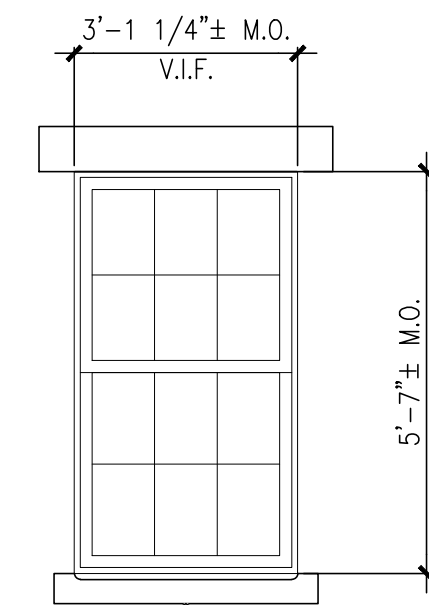
EXISTING DOUBLE HUNG WINDOW TO BE RESTORED AND FITTED WITH OPERABLE STORM WINDOW



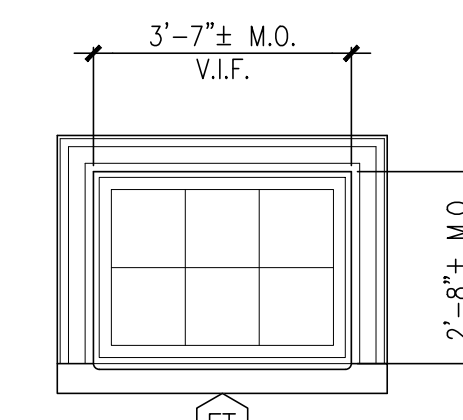
EXISTING DOUBLE HUNG WINDOW TO BE RESTORED AND FITTED WITH OPERABLE STORM WINDOW



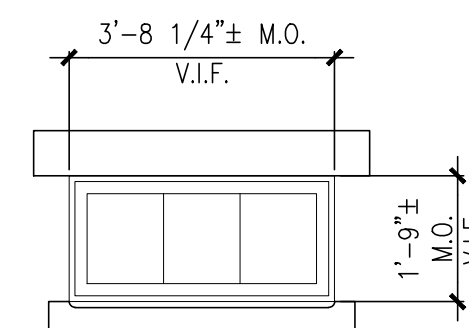
EXISTING DOUBLE HUNG WINDOW TO BE RESTORED AND FITTED WITH NON-OPERABLE STORM WINDOW



EXISTING DOUBLE HUNG WINDOW TO BE RESTORED AND FITTED WITH OPERABLE STORM WINDOW



EXISTING INWARD SWING AWNING WINDOW TO BE RESTORED AND FITTED WITH FIXED STORM WINDOW

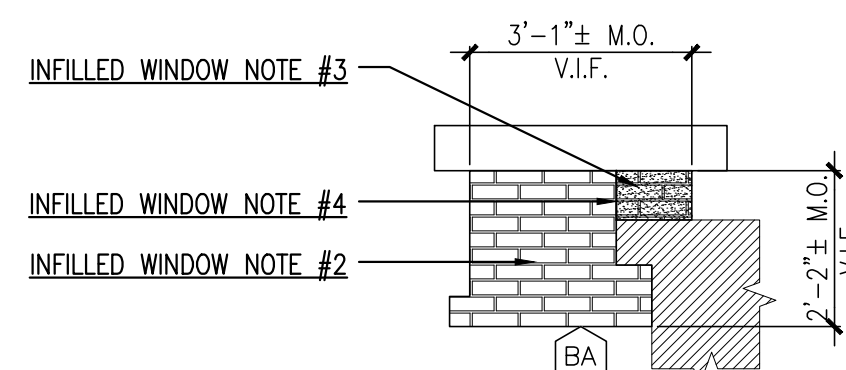


EXISTING INWARD SWING AWNING WINDOW TO BE RESTORED AND FITTED WITH FIXED STORM WINDOW

9 WINDOW ELEVATIONS - EXISTING BUILDING WINDOWS TO BE RESTORED

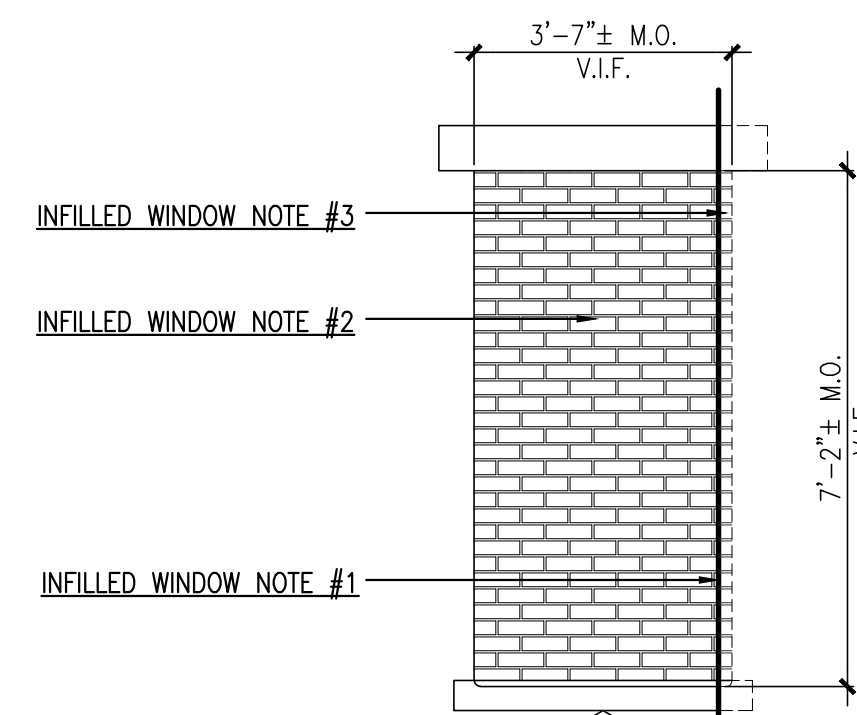
REFERENCED FROM:

SCALE: 3/8" = 1'-0"

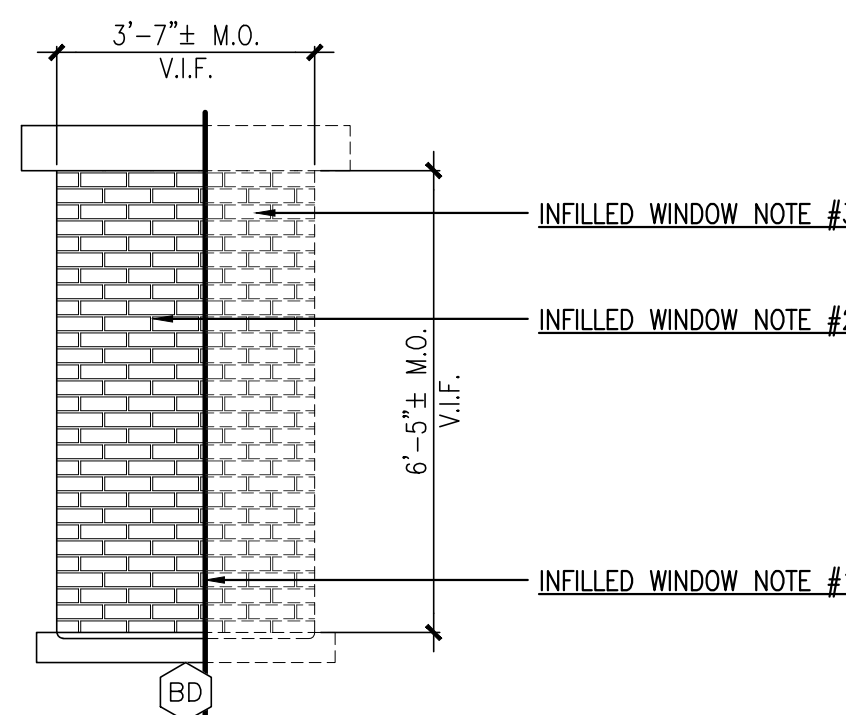


EXISTING INWARD SWING AWNING WINDOW AND PRECAST SILL TO BE REMOVED AND THE OPENING IN-FILLED WITH SALVAGED BRICK COORDINATE WITH NEW DOOR.

NOT USED



EXISTING DOUBLE HUNG WINDOW TO BE REMOVED AND THE OPENING IN-FILLED WITH SALVAGED BRICK



EXISTING DOUBLE HUNG WINDOW TO BE REMOVED AND THE OPENING IN-FILLED WITH SALVAGED BRICK

INFILLED WINDOW NOTES:

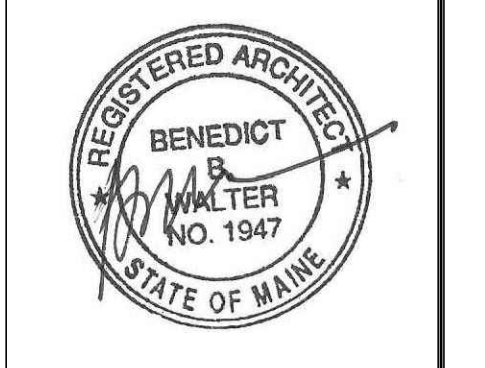
1. LINE INDICATES APPROXIMATE LOCATION OF THE OUTSIDE FACE OF THE FACADE OF THE NEW BUILDING ADDITION. COURSING FOR BRICK INFILL OF EXISTING WINDOW OPENING TO START AT THIS LOCATION.
2. BRICK INFILL TO RECESSED 2" FROM FACE OF EXISTING MASONRY.
3. BRICK INFILL TO BE FLUSH WITH FACE OF EXISTING MASONRY.
4. LINE INDICATES LOCATION OF PLANE CHANGE IN FACE OF BRICK INFILL OF EXISTING WINDOW OPENING.

13 WINDOW ELEVATIONS - EXISTING BUILDING WINDOWS TO BE REMOVED AND INFILLED

REFERENCED FROM:

SCALE: 3/8" = 1'-0"

CWS Architects
 Architecture
 Space Planning
 Value Design
 434 Cumberland Avenue
 Portland, ME 04101
 Phone: (207)774-4441
 Fax: (207)774-4016
 www.CWSarch.com



Owner:
Children's Hospital Housing Partners, LP
 309 Cumberland Ave.
 Suite 203
 Portland, Maine 04101
 CONSTRUCTION MANAGER:
WRIGHT-RYAN CONSTRUCTION
 10 DANFORTH STREET
 PORTLAND, ME 04101
 TEL: (201) 773-3625

ELM TERRACE
 68 HIGH STREET
 PORTLAND, MAINE
 Project No: 09428
 Drawing Title:
WINDOW ELEVATIONS - EXISTING BUILDING

- Scale: AS NOTED
 Date: ISSUED SEPTEMBER 8, 2011
 Revisions:
 MAINE HOUSING CONCEPT SUBMISSION 02-01-2011
 HISTORIC PRESERVATION SUBMISSION 03-23-2011
 50% MAINEHOUSING REVIEW 04-01-2011
 90% MAINEHOUSING REVIEW 06-03-2011
 NPS SUBMISSION 07-01-2011
 ISSUED SEPTEMBER 8, 2011

Drawing Number:
A8.21