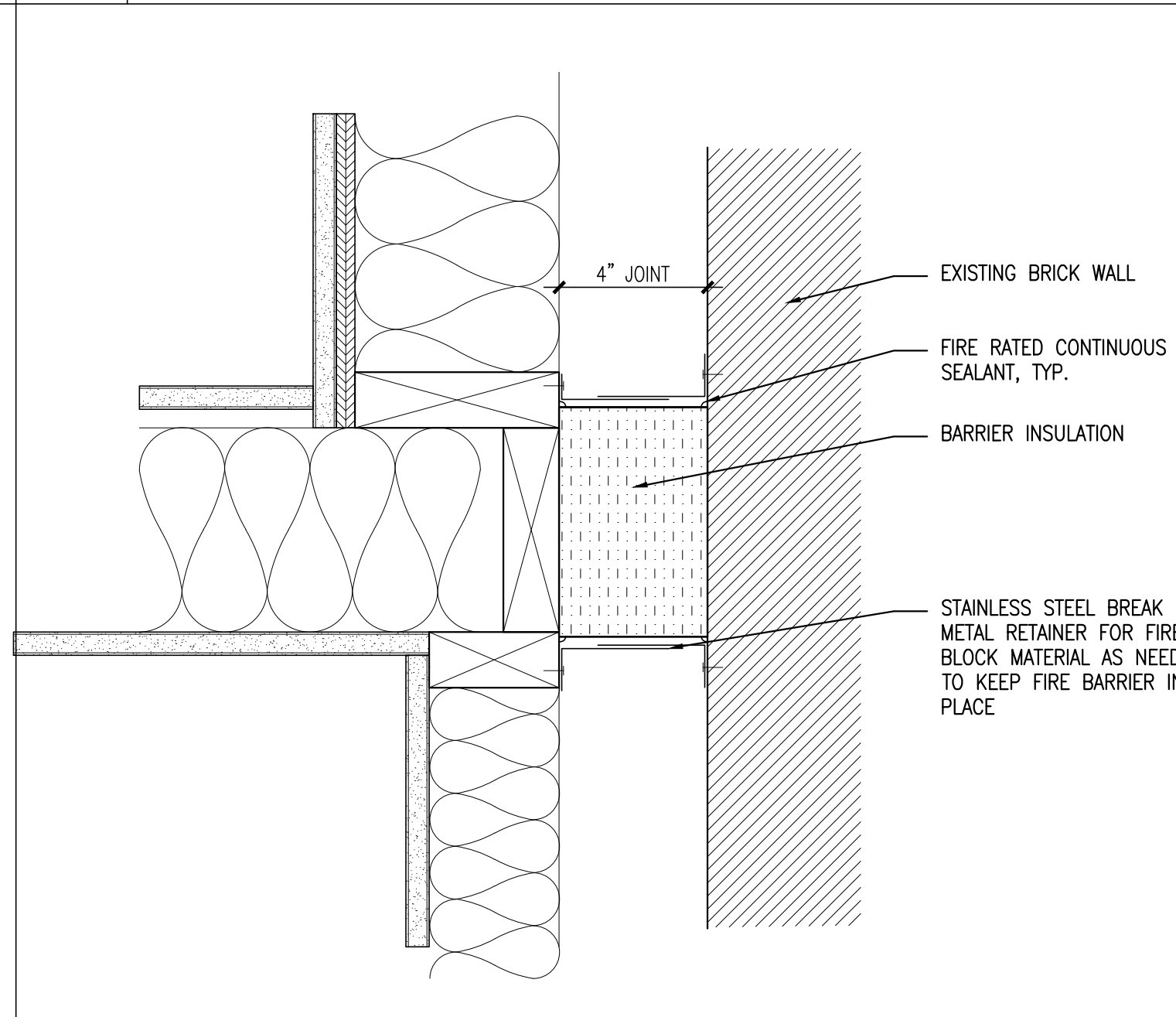
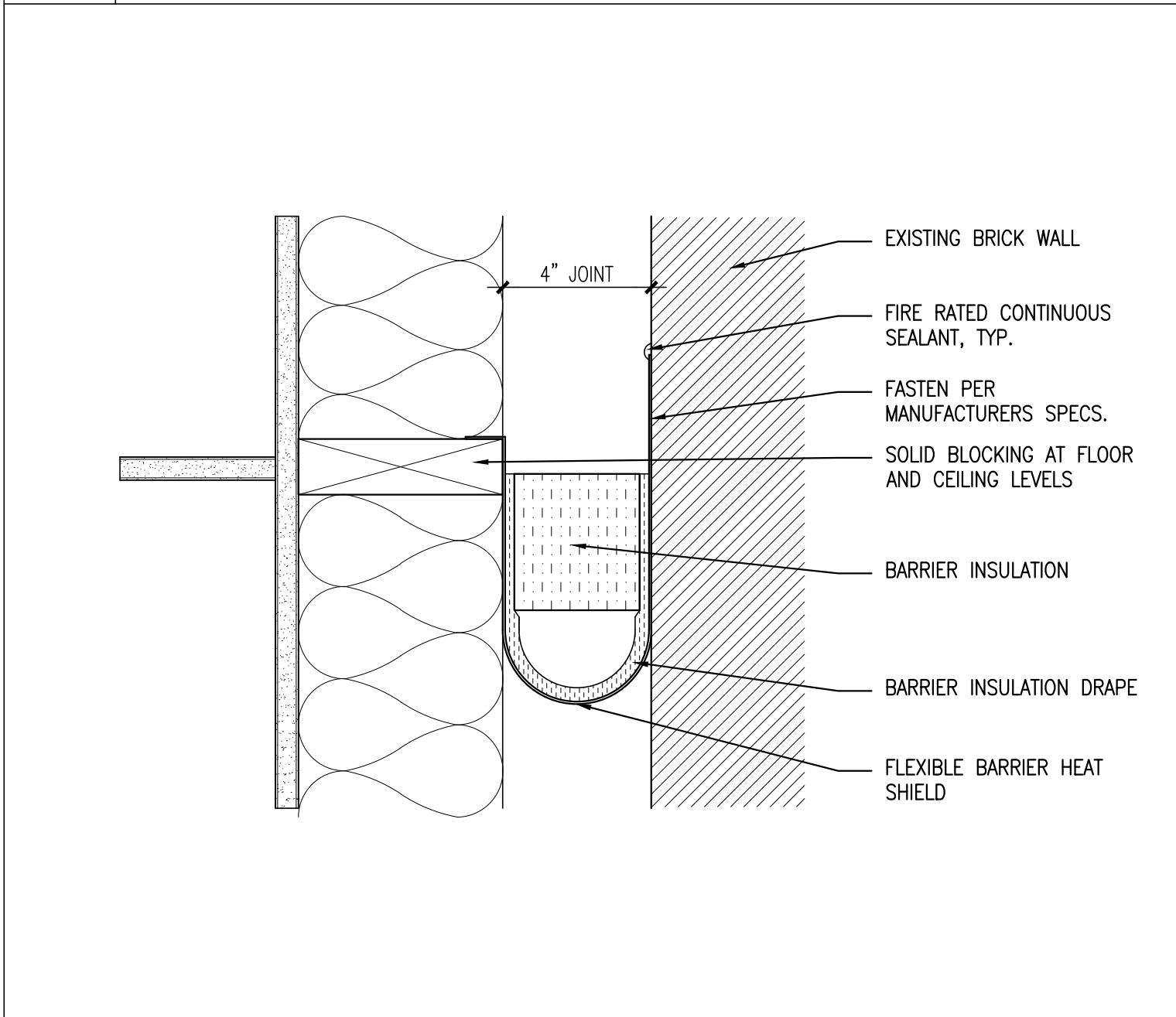


1 NEW PANEL WALL AT WINDOW INFILL
 REFERENCED FROM: SCALE: 3"=1'-0"

2 NEW PANEL WALL TYP. VERTICAL JOINT
 REFERENCED FROM: SCALE: 3"=1'-0"

3 NEW PANEL WALL @ EXIST. WALL VERT. JNT.
 REFERENCED FROM: SCALE: 3"=1'-0"

4 NEW PANEL WALL HORIZONTAL JOINT TYP.
 REFERENCED FROM: SCALE: 3"=1'-0"



5 HORIZONTAL SMOKE/FIRE BARRIER 4" JOINT
 REFERENCED FROM: SCALE: 3"=1'-0"

6 VERTICAL SMOKE/FIRE BARRIER 4" JOINT
 REFERENCED FROM: SCALE: 3"=1'-0"

7 DETAIL @
 REFERENCED FROM: SCALE:

8 DETAIL @
 REFERENCED FROM: SCALE:

9 DETAIL @
 REFERENCED FROM: SCALE:

10 DETAIL @
 REFERENCED FROM: SCALE:

11 DETAIL @
 REFERENCED FROM: SCALE:

12 DETAIL @
 REFERENCED FROM: SCALE:

CWS
CWS Architects
 Architecture
 Space Planning
 Value Design
 434 Cumberland Avenue
 Portland, ME 04101
 Phone: (207)774-4441
 Fax: (207)774-4016
 www.CWSarch.com

REGISTERED ARCHITECT
 BENEDICT
 WALKER
 NO. 1947
 STATE OF MAINE

Owner:
Children's Hospital Housing Partners, LP
 309 Cumberland Ave.
 Suite 203
 Portland, Maine 04101

CONSTRUCTION MANAGER:
WRIGHT-RYAN CONSTRUCTION
 10 DANFORTH STREET
 PORTLAND, ME 04101
 TEL: (207) 773-3625

ELM TERRACE
 68 HIGH STREET
 PORTLAND, MAINE

Project No: 09428

Drawing Title:
MISC DETAILS

Scale:
 Date: ISSUED SEPTEMBER 8, 2011

Revisions:
 ▲ MAINE HOUSING CONCEPT SUBMISSION 02-01-2011
 ▲ HISTORIC PRESERVATION SUBMISSION 03-23-2011
 ▲ 50% MAINEHOUSING REVIEW 04-01-2011
 ▲ 90% MAINEHOUSING REVIEW 06-03-2011
 ▲ NPS SUBMISSION 07-01-2011
 ▲ ISSUED SEPTEMBER 8, 2011

Drawing Number:
A7.11