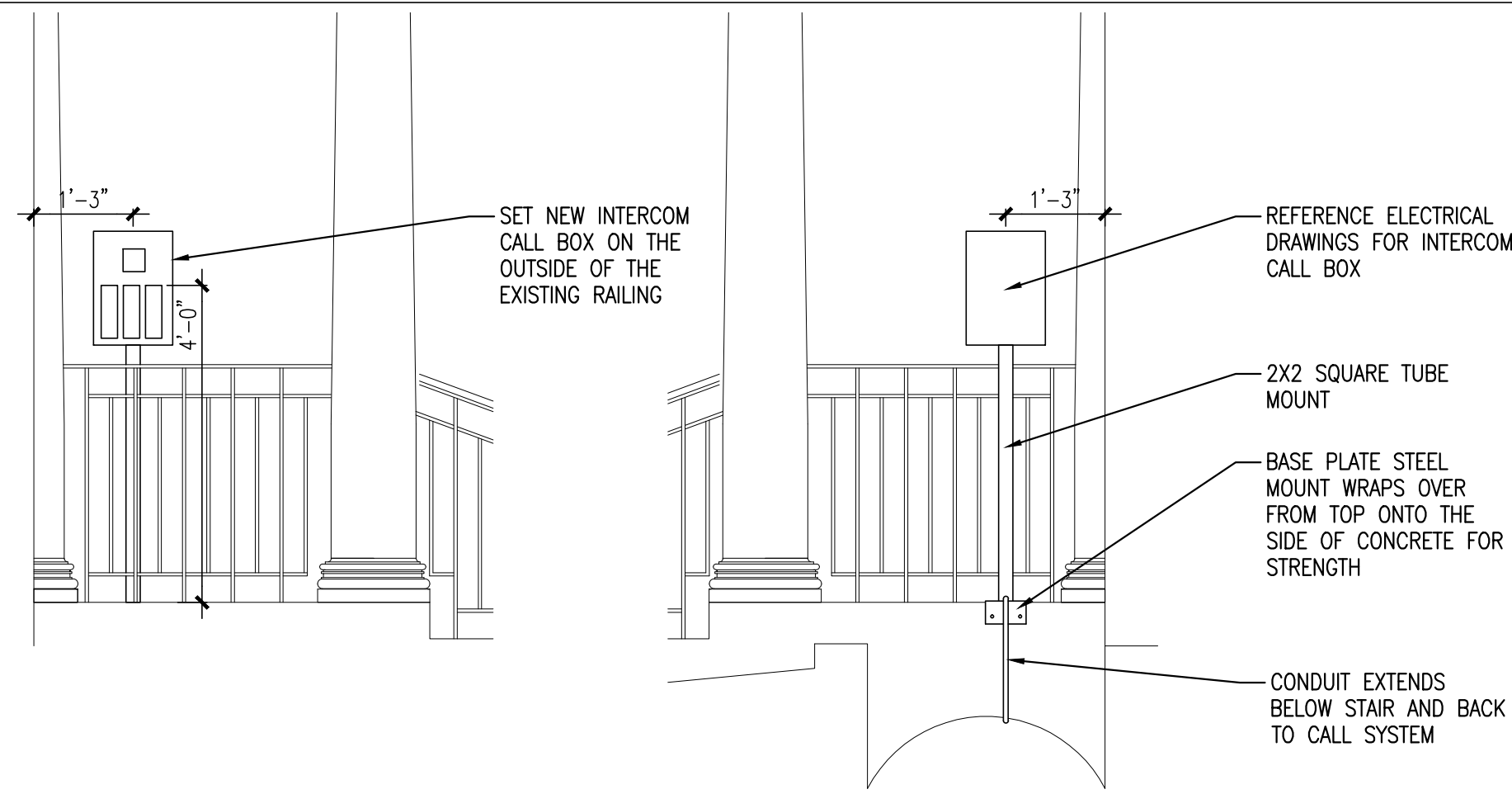
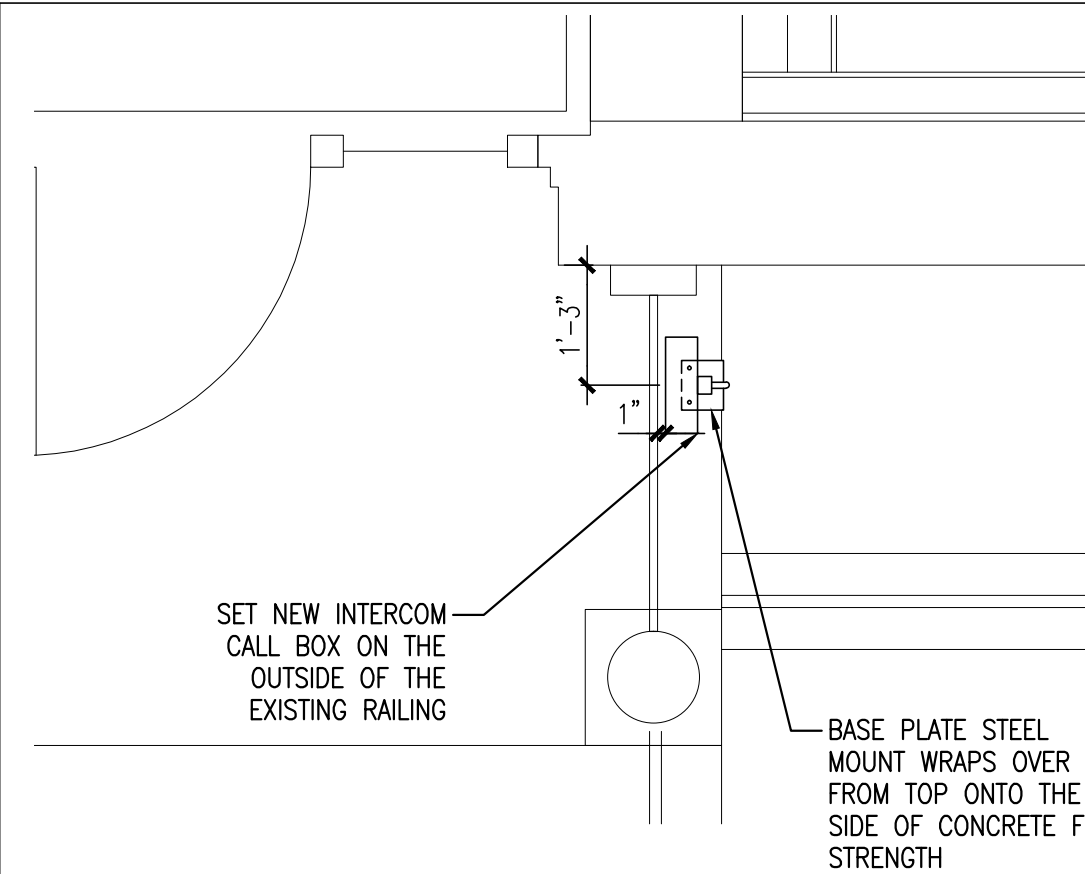


**TYPICAL CAST STONE NOTES:**

1. PROVIDE CONTINUOUS DRIP GROOVE.
2. PROVIDE SLOTS AS REQUIRED FOR MASONRY PIN ANCHORS. COORDINATE SIZE AND LOCATION WITH MASONRY ANCHOR AND MASON CONTRACTOR.
3. PROVIDE SOFT SEALANT JOINTS AT ALL LOCATIONS WHERE PRECAST JOINTS ALIGN ABOVE MASONRY BRICK CONTROL JOINTS AND WHERE NOTED OTHERWISE.
4. PROVIDE REINFORCEMENT AND CONNECTIONS AS SPECIFIED BY CAST STONE MANUFACTURER.
5. PROVIDE 4'0" MASONRY LENGTHS. ALIGN JOINTS WITH WITH MASONRY COURSING ABOVE & BELOW.



**1 TYPICAL CAST STONE NOTES**

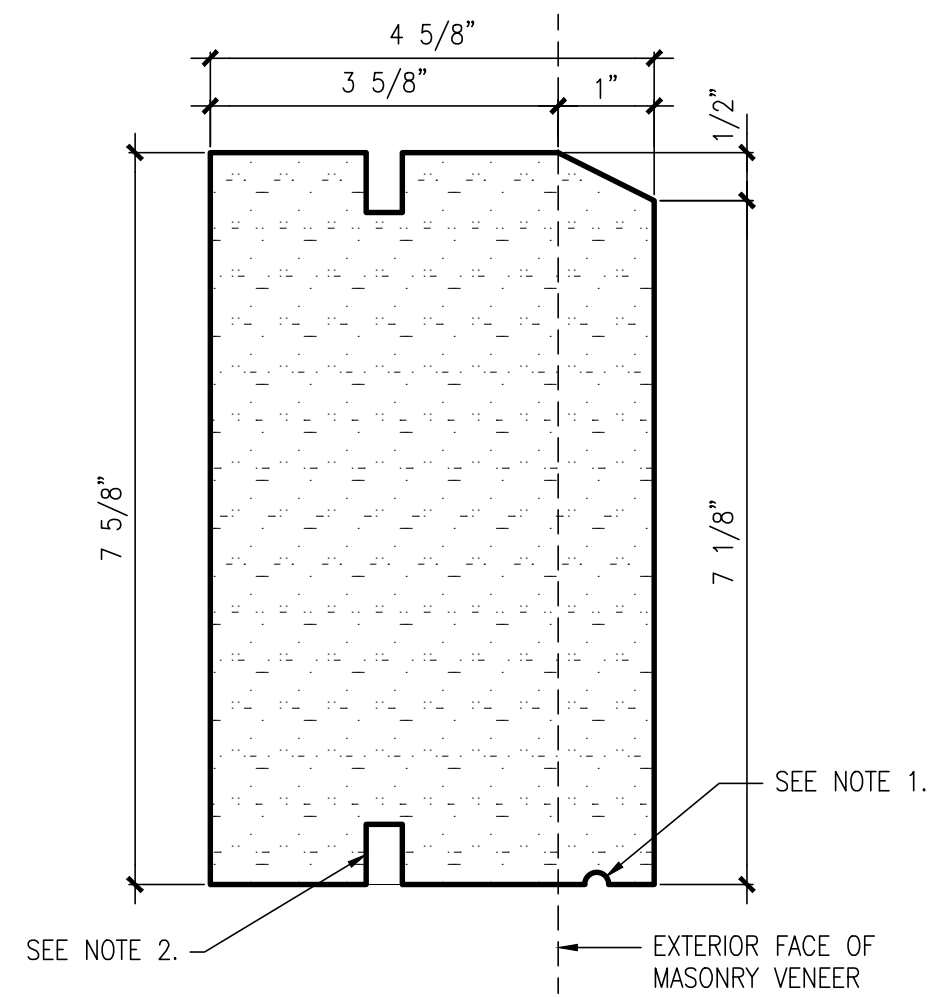
REFERENCED FROM: SCALE:

**2 HIGH ST. ENTRY INTERCOM CALL BOX**

REFERENCED FROM: SCALE:

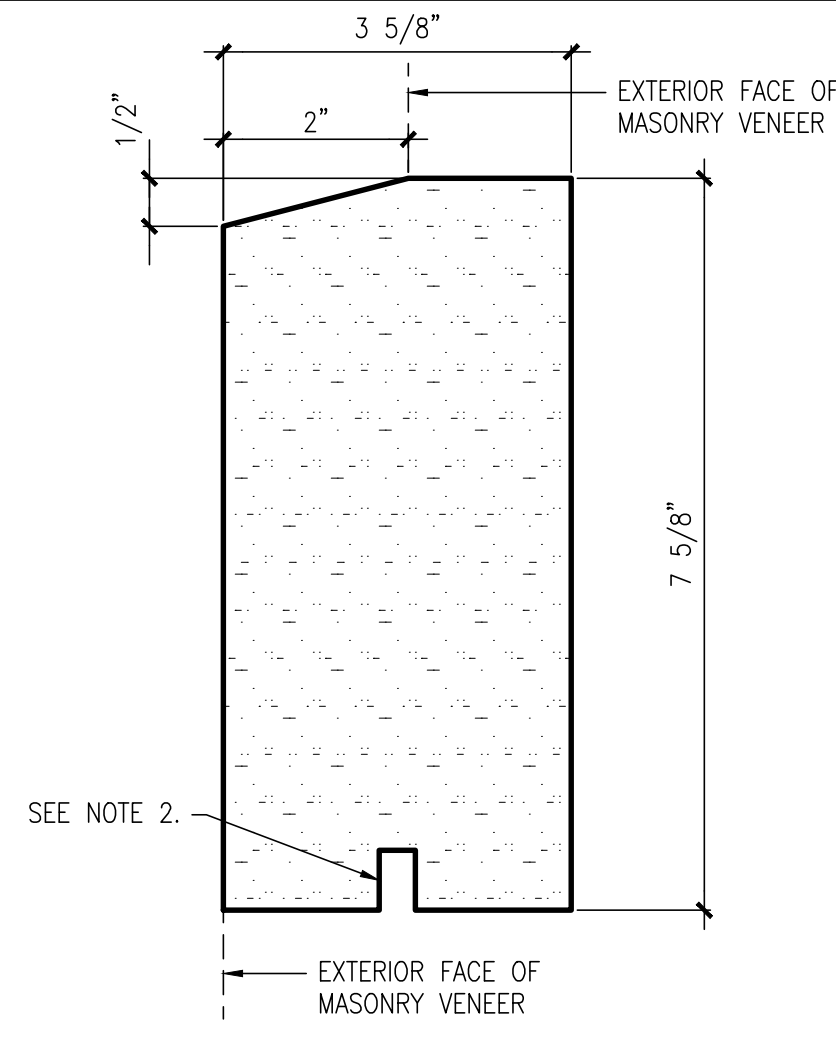
**4 NOT USED**

REFERENCED FROM: SCALE:



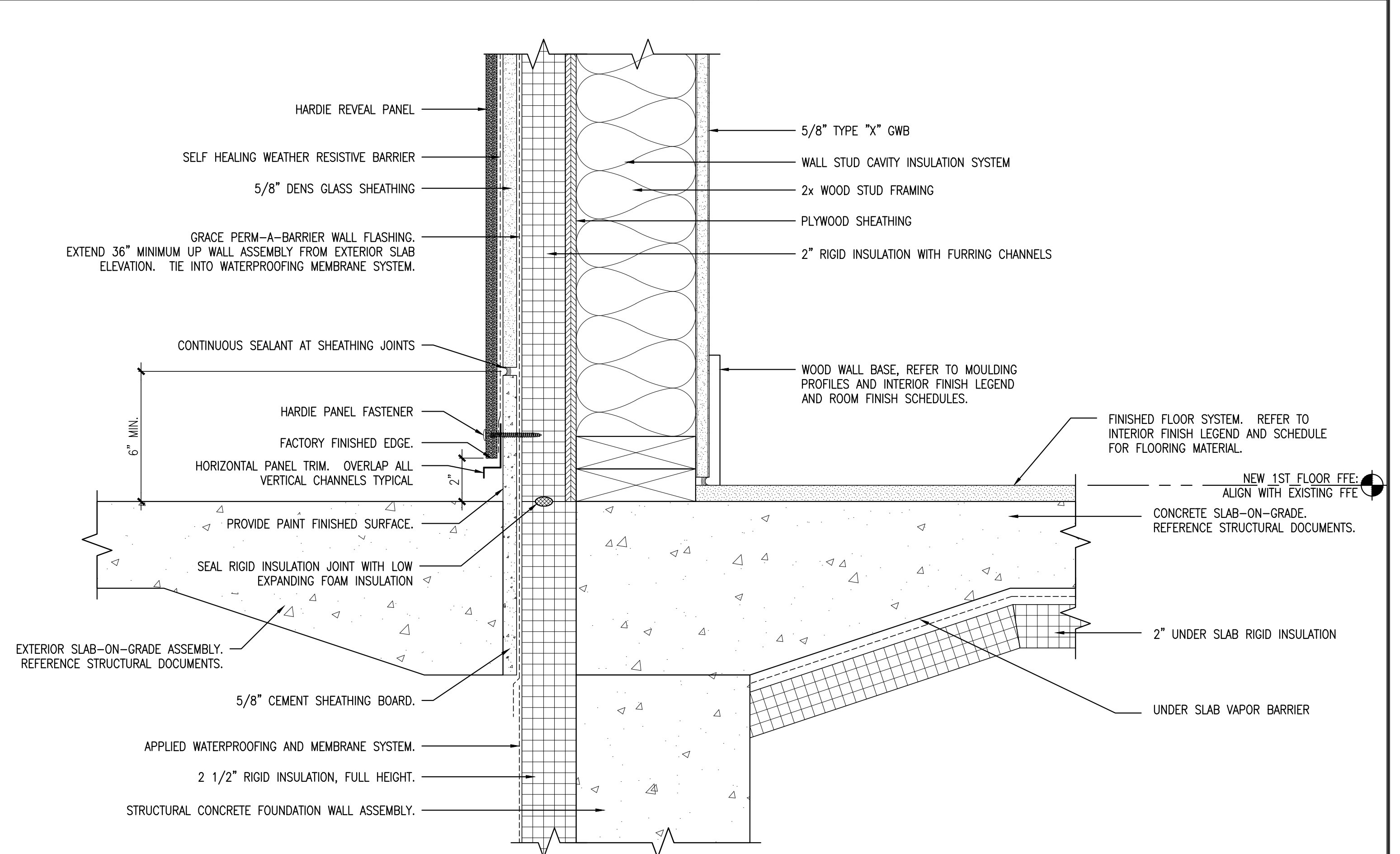
**5 SECTION DETAIL @ CAST STONE ACCENT BAND**

SCALE: 6" = 1'-0"



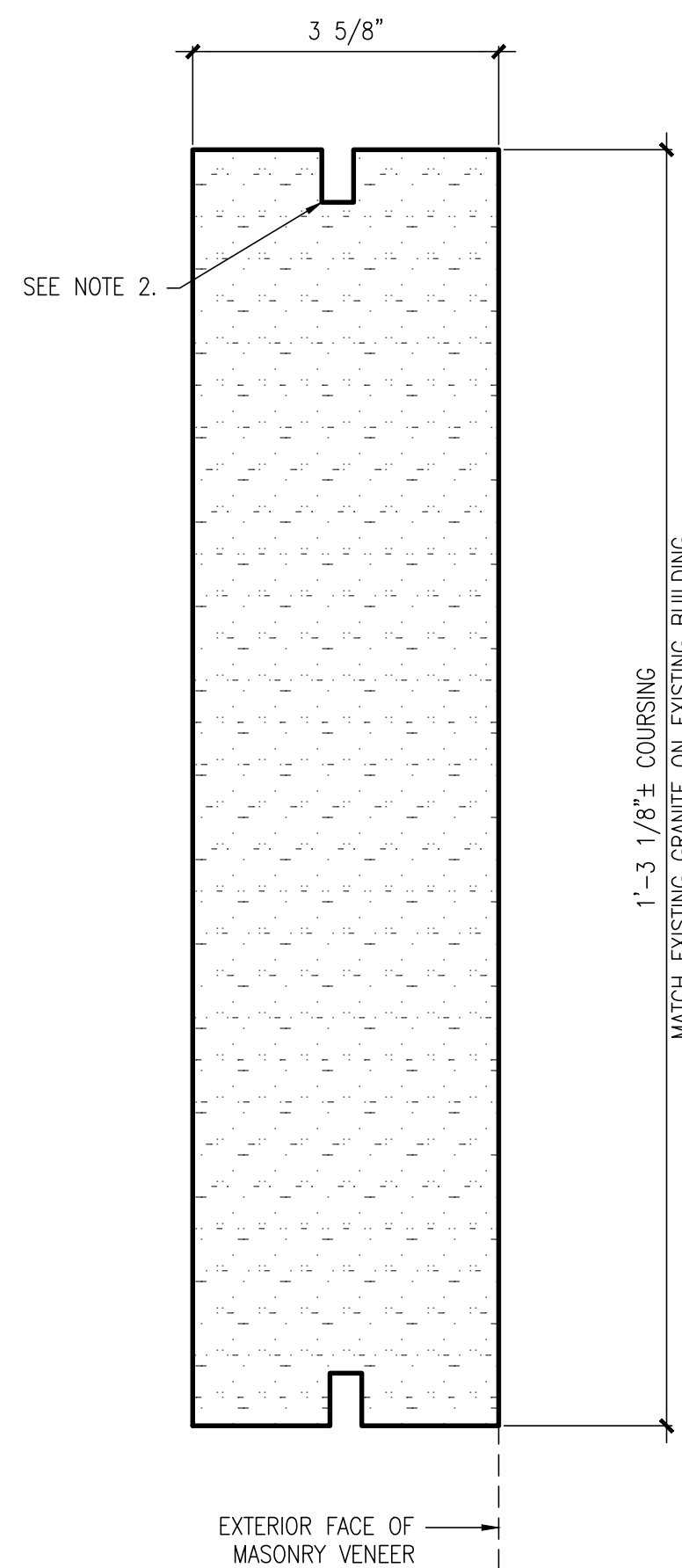
**6 SECTION DETAIL @ CAST STONE**

SCALE: 6" = 1'-0"



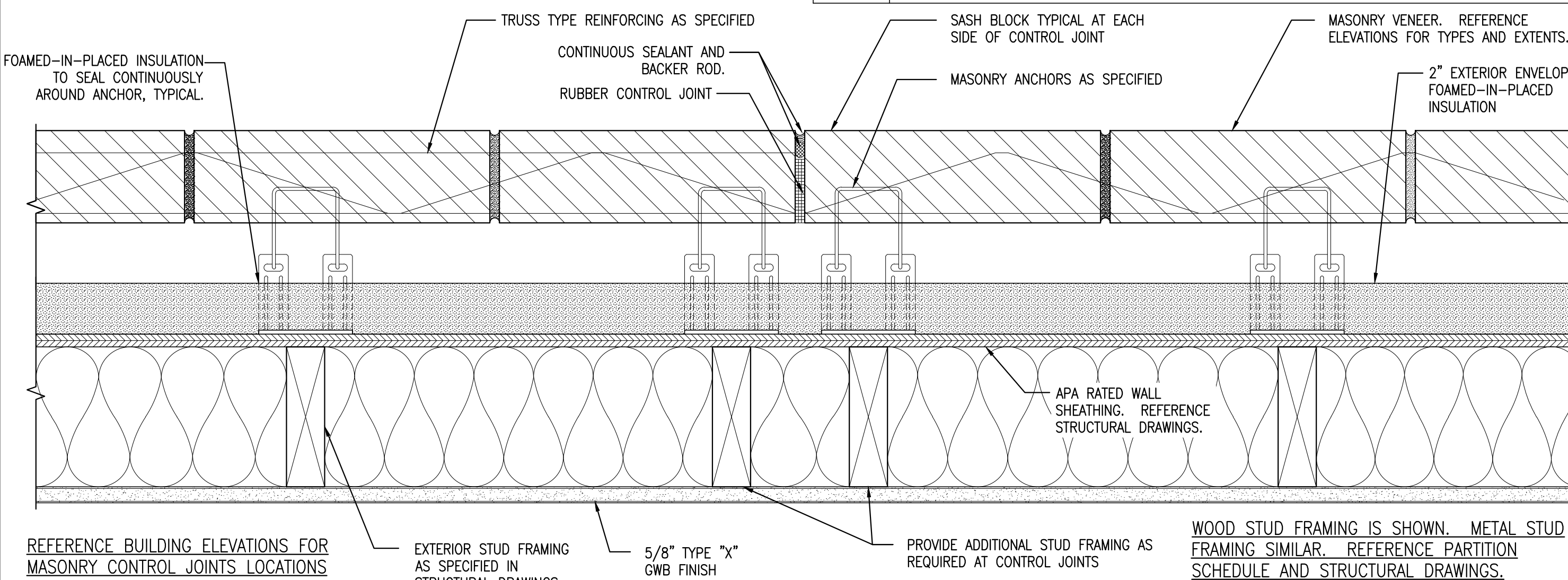
**11 BASED OF WALL DETAIL @ FIBER CEMENT REVEAL PANEL WALL ASSEMBLY**

REFERENCED FROM: SCALE: 3" = 1'-0"



**13 SECTION DETAIL @ CAST STONE ACCENT BAND**

SCALE: 6" = 1'-0"



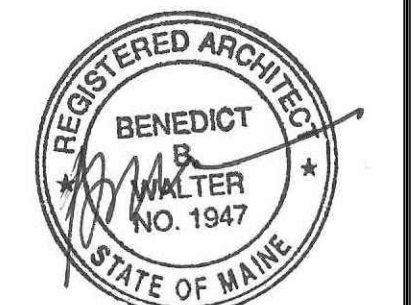
**14 DETAIL @ MASONRY CONTROL JOINT**

SCALE: 3" = 1'-0"

**16 NOT USED**

REFERENCED FROM: SCALE:

**CWS Architects**  
 Architecture  
 Space Planning  
 Value Design  
 434 Cumberland Avenue  
 Portland, ME 04101  
 Phone: (207)774-4441  
 Fax: (207)774-4016  
 www.CWSarch.com



Owner:  
**Children's Hospital Housing Partners, LP**  
 309 Cumberland Ave.  
 Suite 203  
 Portland, Maine 04101  
 Construction Manager:  
**WRIGHT-RYAN CONSTRUCTION**  
 10 DANFORTH STREET  
 PORTLAND, ME 04101  
 TEL: (201) 773-3625

**ELM TERRACE**  
 68 HIGH STREET  
 PORTLAND, MAINE  
 Project No: 09428  
 Drawing Title:  
**MISC. DETAILS**

- Scale: AS NOTED  
 Date: ISSUED SEPTEMBER 8, 2011  
 Revisions:  
 ▲ MAINE HOUSING CONCEPT SUBMISSION 02-01-2011  
 ▲ HISTORIC PRESERVATION SUBMISSION 03-23-2011  
 ▲ 50% MAINEHOUSING REVIEW 04-01-2011  
 ▲ 90% MAINEHOUSING REVIEW 06-03-2011  
 ▲ NPS SUBMISSION 07-01-2011  
 ▲ ISSUED SEPTEMBER 8, 2011

Drawing Number:  
**A7.05**