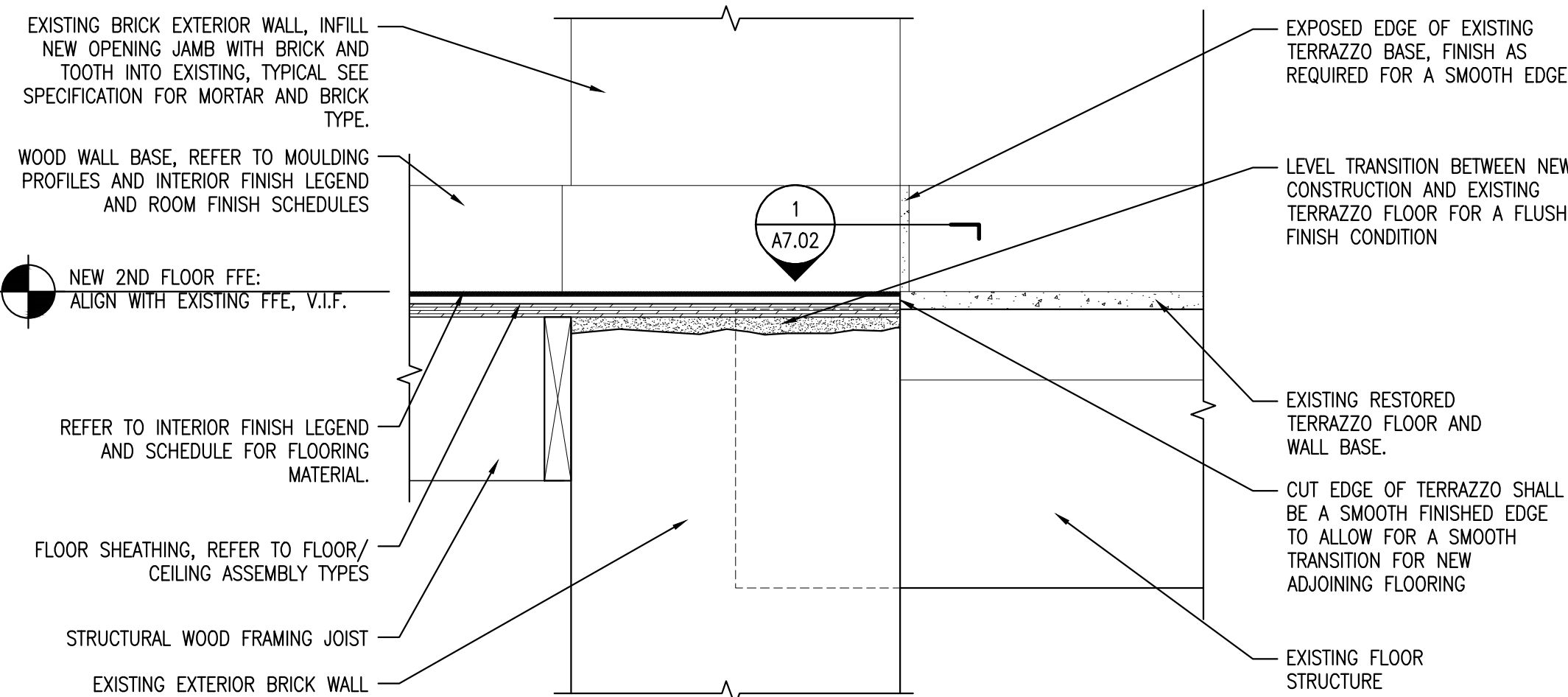


1 WALL BASE PLAN DETAIL

REFERENCED FROM:

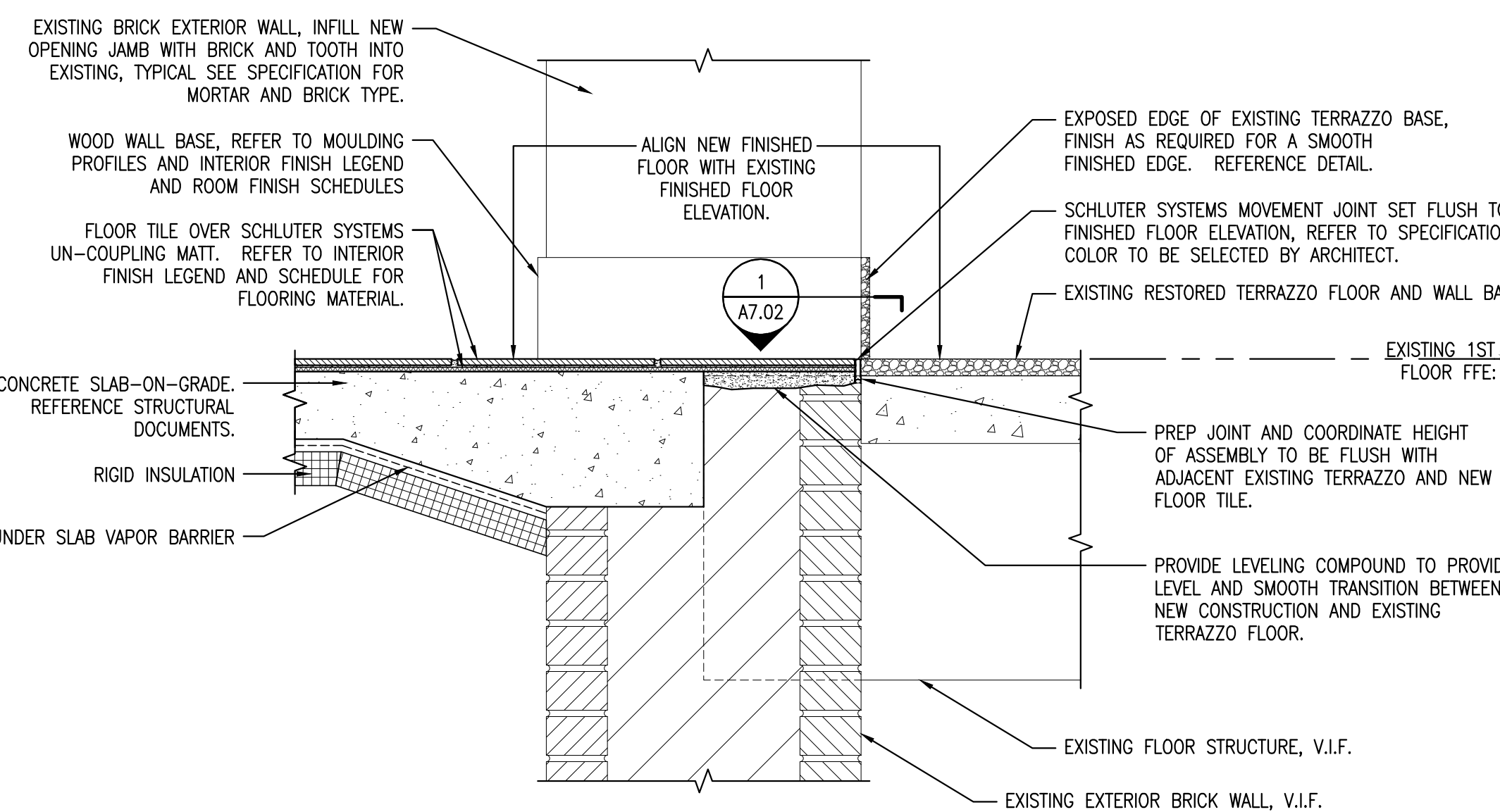
SCALE: 3" = 1'-0"



7 TYPICAL TRANSITION AT EXISTING EXTERIOR WALL AND NEW FLOOR

REFERENCED FROM:

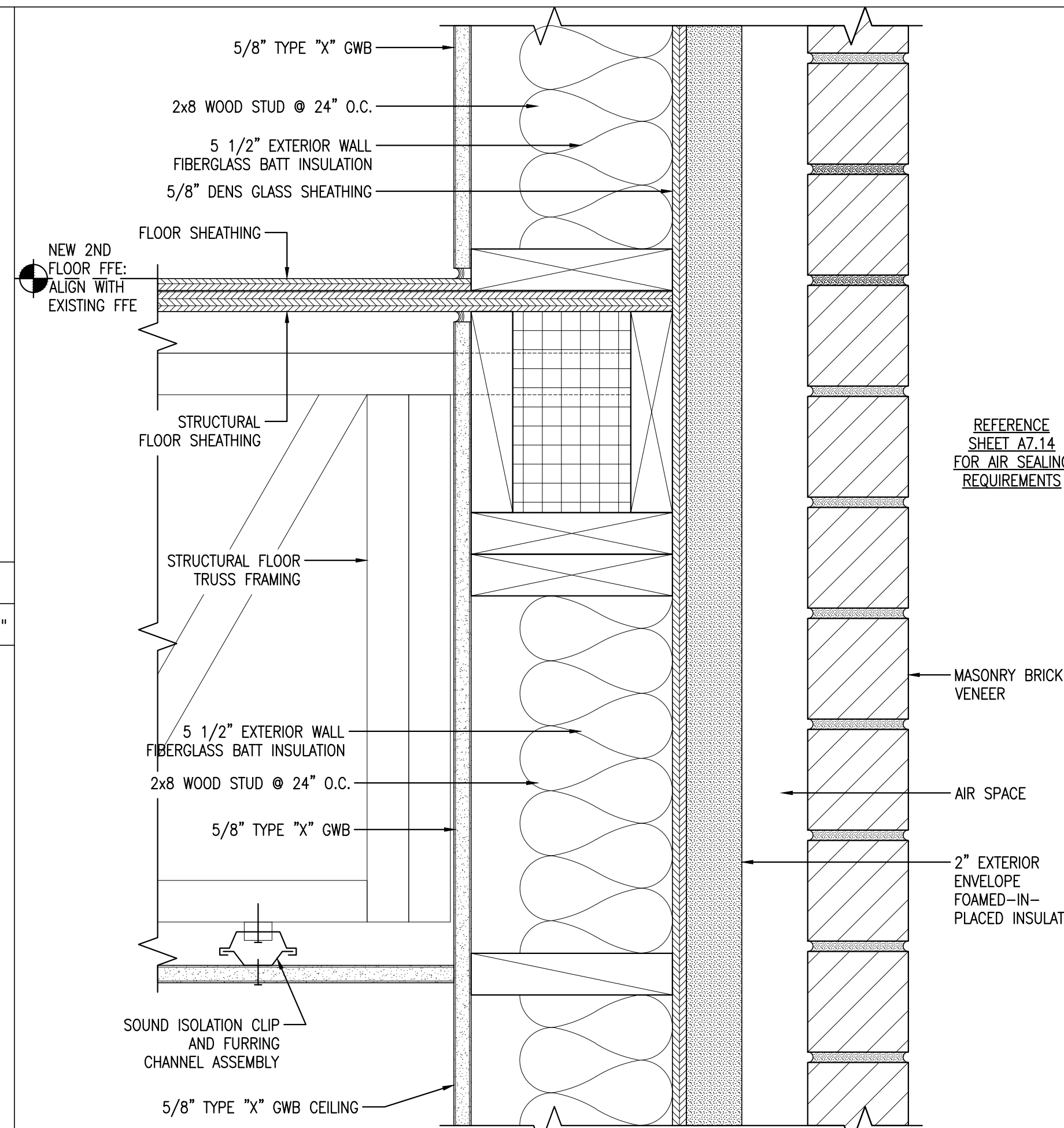
SCALE: 1 1/2" = 1'-0"



13 FIRST FLOOR TRANSITION AT EXTERIOR WALL AND NEW FLOOR

REFERENCED FROM:

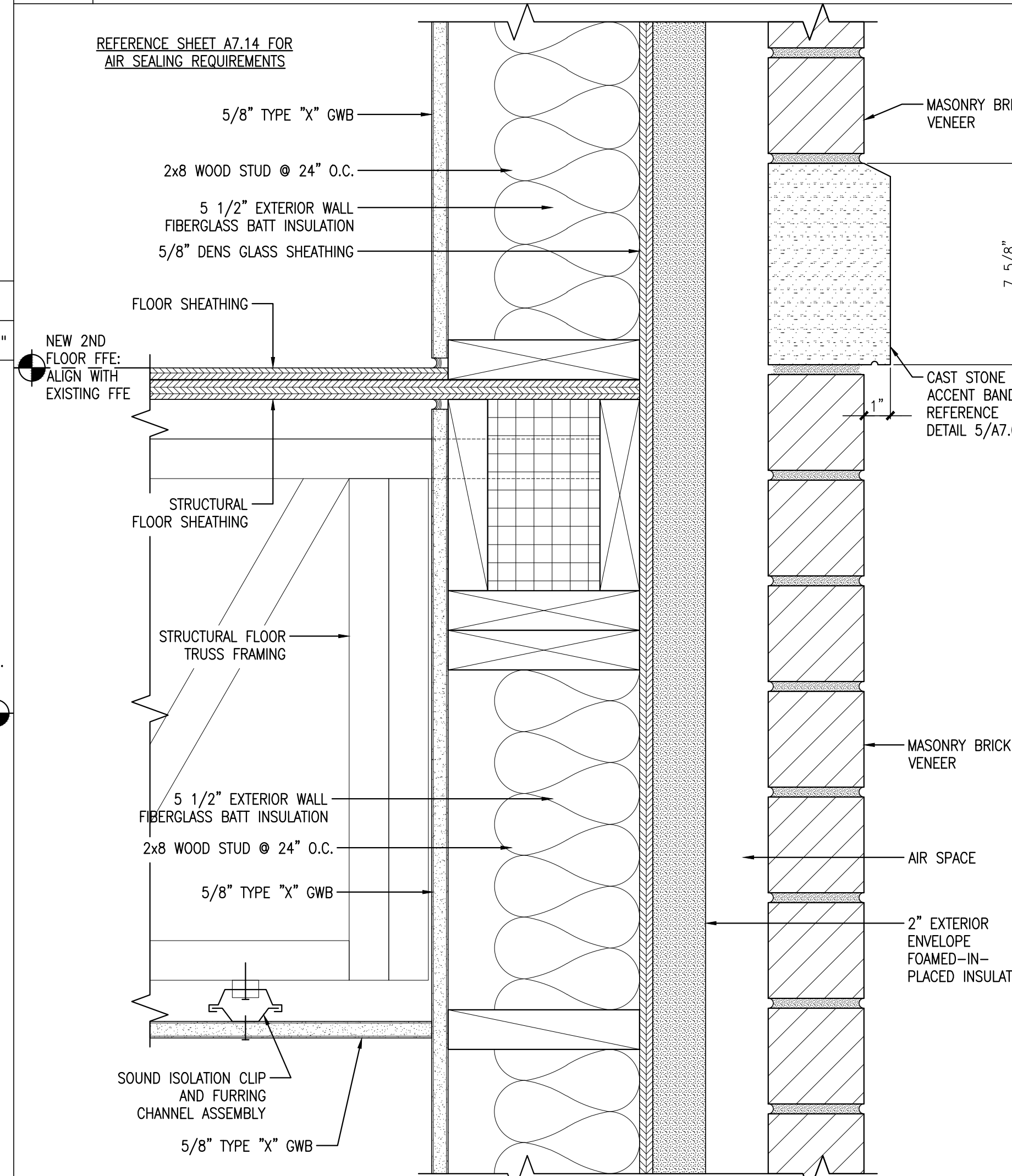
SCALE: 1 1/2" = 1'-0"



6 DETAIL @ THIRD FLOOR @ EXTERIOR WALL

REFERENCED FROM:

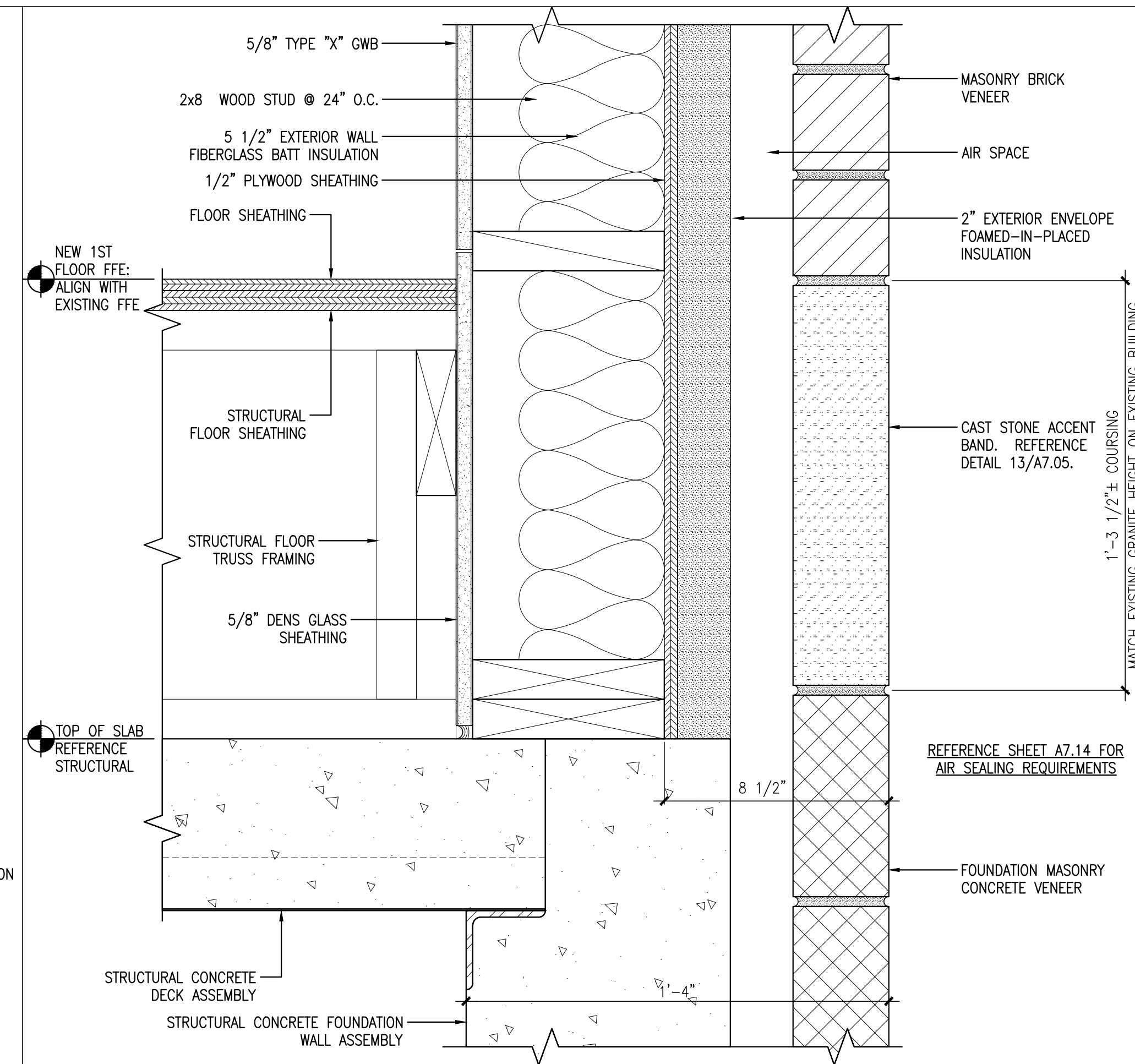
SCALE: 3" = 1'-0"



14 DETAIL @ SECOND FLOOR @ EXTERIOR WALL

REFERENCED FROM:

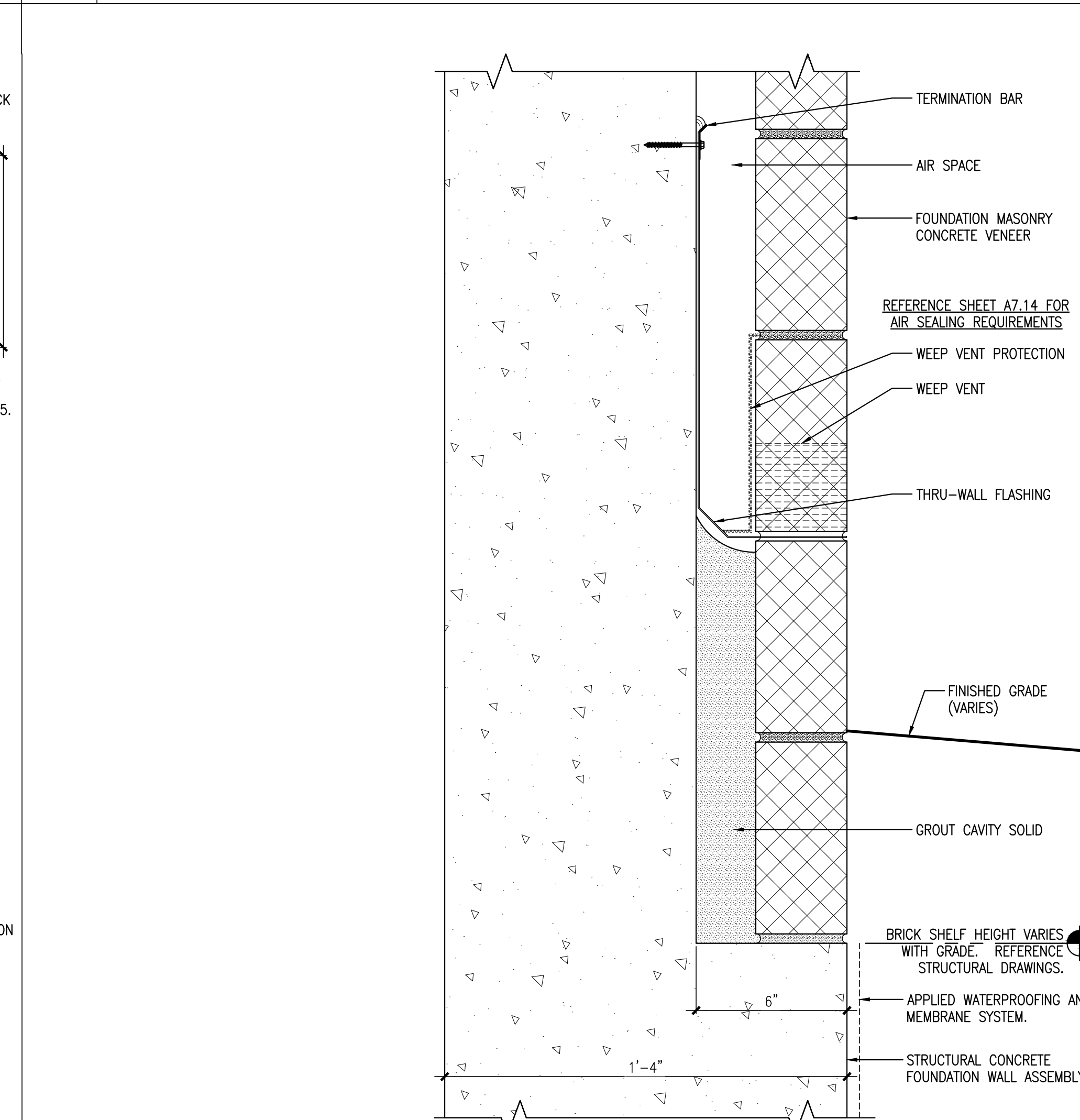
SCALE: 3" = 1'-0"



8 DETAIL @ FIRST FLOOR @ EXTERIOR WALL

REFERENCED FROM:

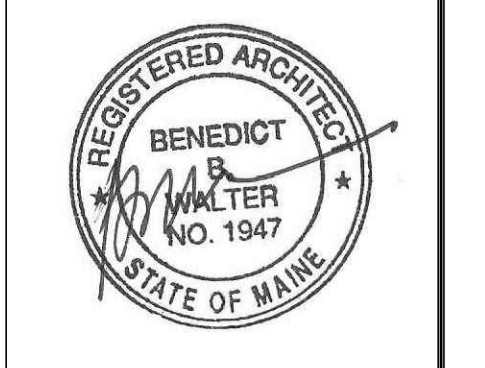
SCALE: 3" = 1'-0"



16 DETAIL @ MASONRY VENEER SHELF

SCALE: 3" = 1'-0"

CWS Architects
 Architecture
 Space Planning
 Value Design
 434 Cumberland Avenue
 Portland, ME 04101
 Phone: (207)774-4441
 Fax: (207)774-4016
 www.CWSarch.com



Owner:
Children's Hospital Housing Partners, LP
 309 Cumberland Ave.
 Suite 203
 Portland, Maine 04101
 CONSTRUCTION MANAGER:
WRIGHT-RYAN CONSTRUCTION
 10 DANFORTH STREET
 PORTLAND, ME 04101
 TEL: (207) 773-3625

ELM TERRACE
 68 HIGH STREET
 PORTLAND, MAINE
 Project No: 09428
 Drawing Title:
MISC DETAILS

Scale: AS NOTED
 Date: ISSUED SEPTEMBER 8, 2011
 Revisions:
 ▲ MAINE HOUSING CONCEPT SUBMISSION 02-01-2011
 ▲ HISTORIC PRESERVATION SUBMISSION 03-23-2011
 ▲ 50% MAINEHOUSING REVIEW 04-01-2011
 ▲ 90% MAINEHOUSING REVIEW 06-03-2011
 ▲ NPS SUBMISSION 07-01-2011
 ▲ ISSUED SEPTEMBER 8, 2011
 Drawing Number:
A7.02