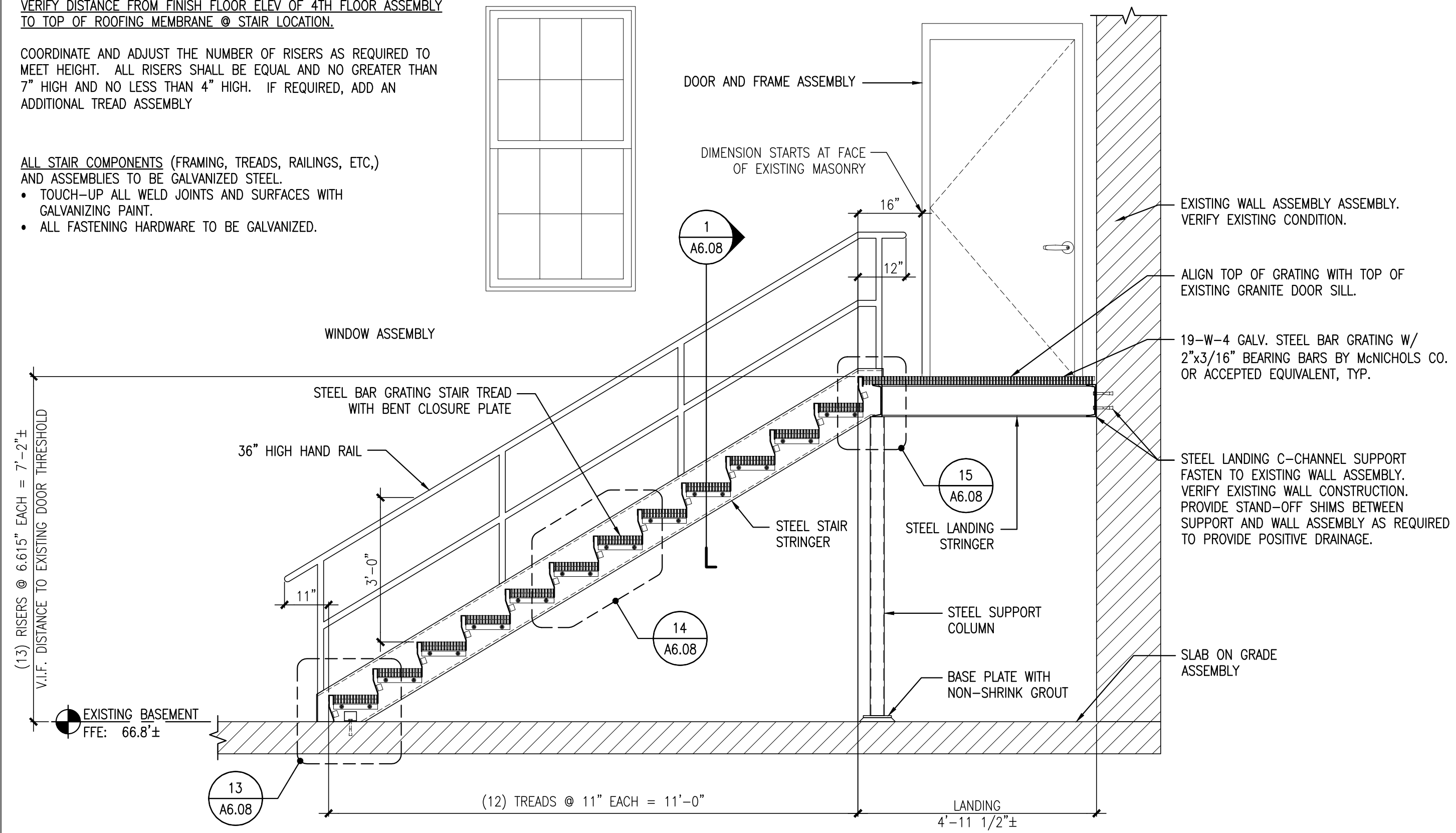


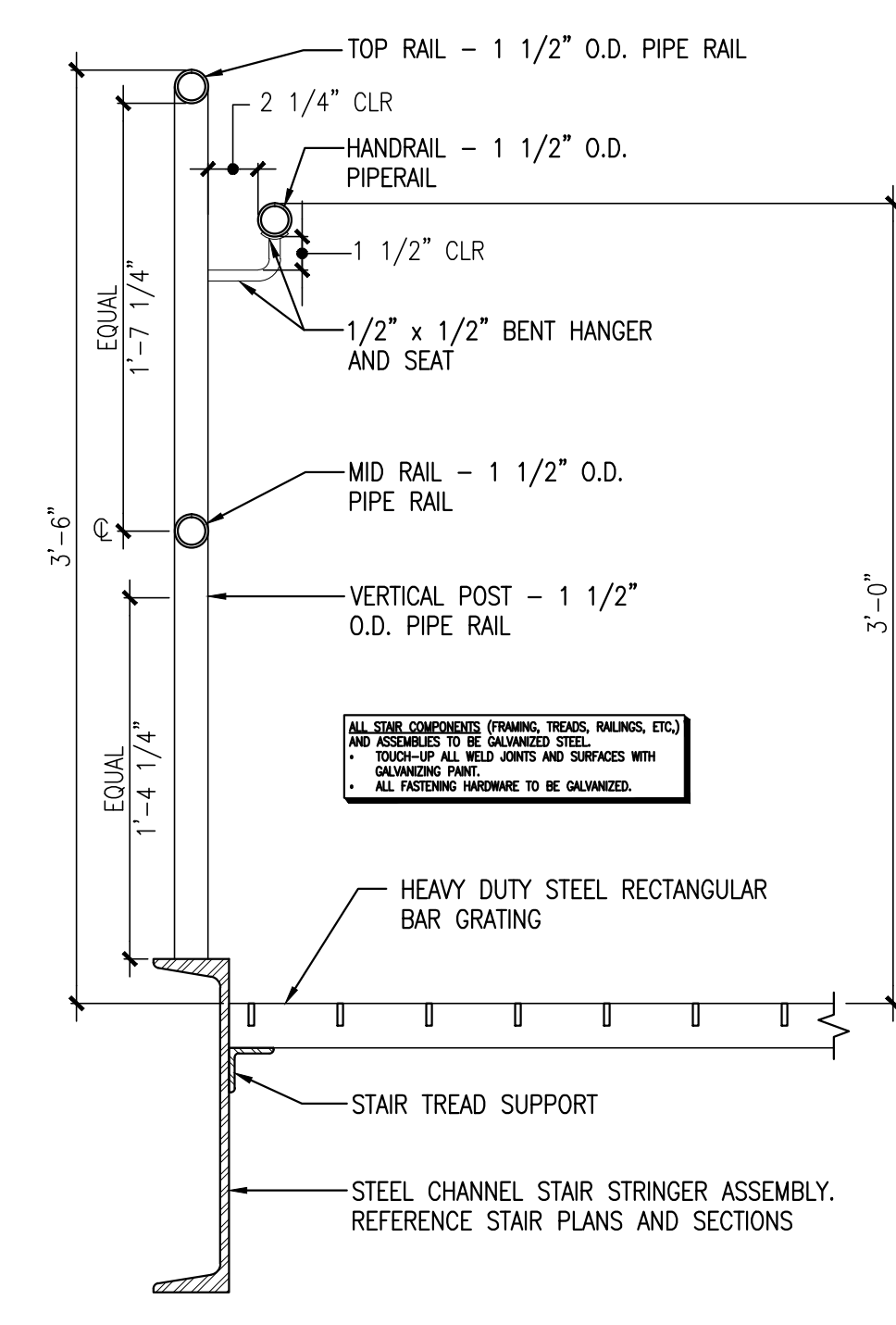
STAIR DIMENSIONAL NOTES:

VERIFY DISTANCE FROM FINISH FLOOR ELEV. OF 4TH FLOOR ASSEMBLY TO TOP OF ROOFING MEMBRANE @ STAIR LOCATION.
COORDINATE AND ADJUST THE NUMBER OF RISERS AS REQUIRED TO MEET HEIGHT. ALL RISERS SHALL BE EQUAL AND NO GREATER THAN 7" HIGH AND NO LESS THAN 4" HIGH. IF REQUIRED, ADD AN ADDITIONAL TREAD ASSEMBLY

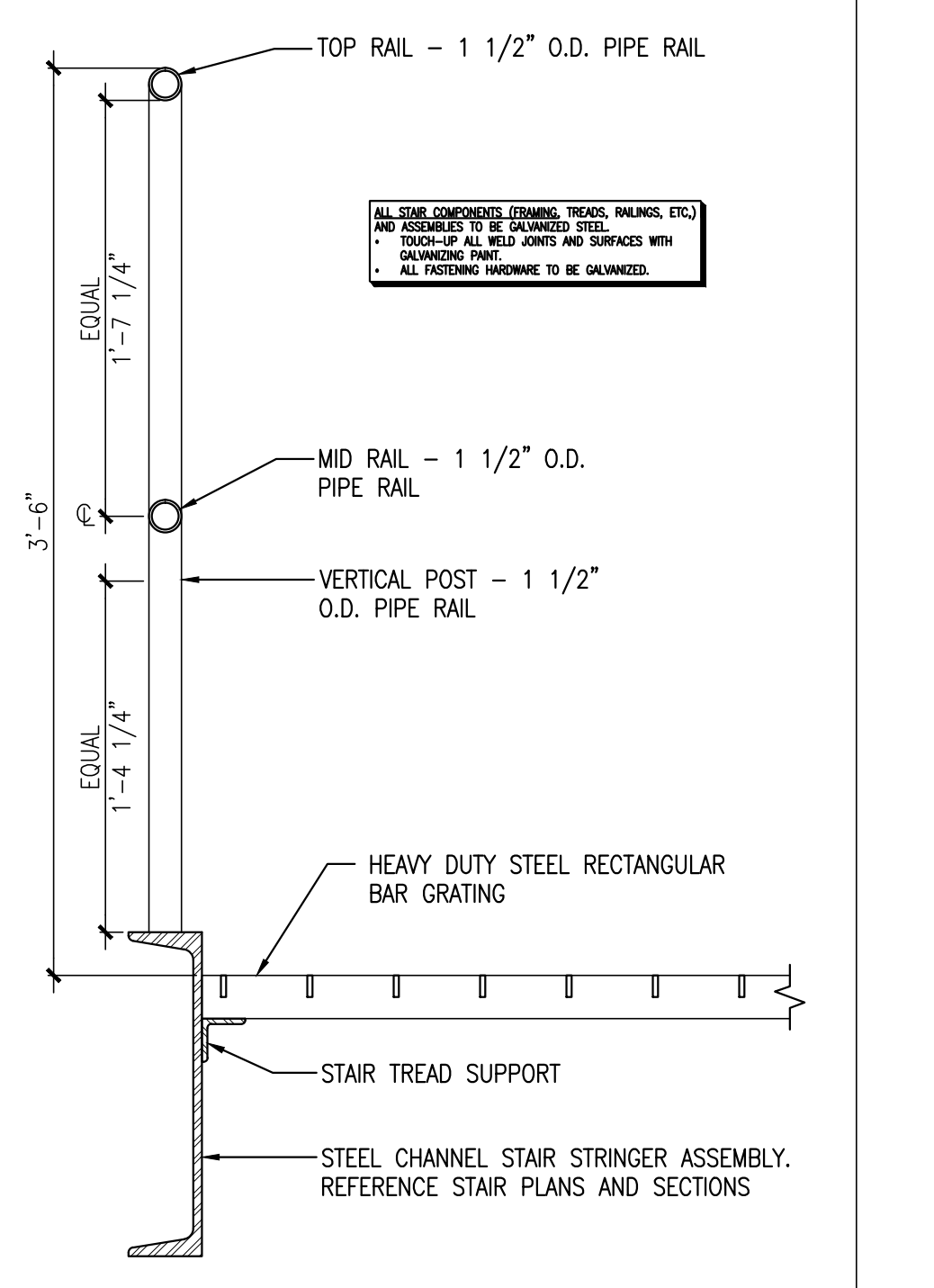
ALL STAIR COMPONENTS (FRAMING, TREADS, RAILINGS, ETC.) AND ASSEMBLIES TO BE GALVANIZED STEEL.
• TOUCH-UP ALL WELD JOINTS AND SURFACES WITH GALVANIZING PAINT.
• ALL FASTENING HARDWARE TO BE GALVANIZED.



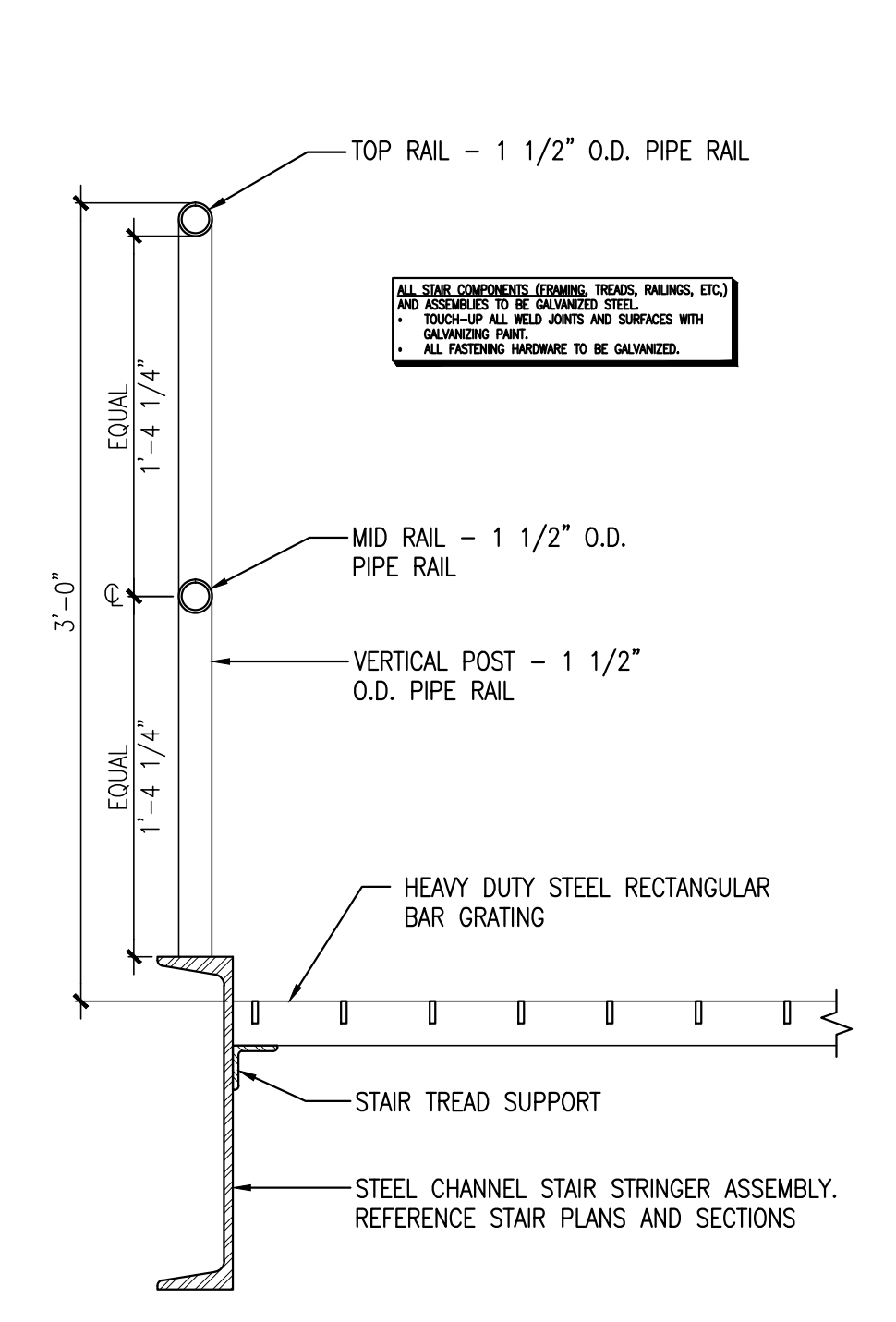
8 SECTION @ STAIR # 5
REFERENCED FROM: SCALE: 1/2" = 1'-0"



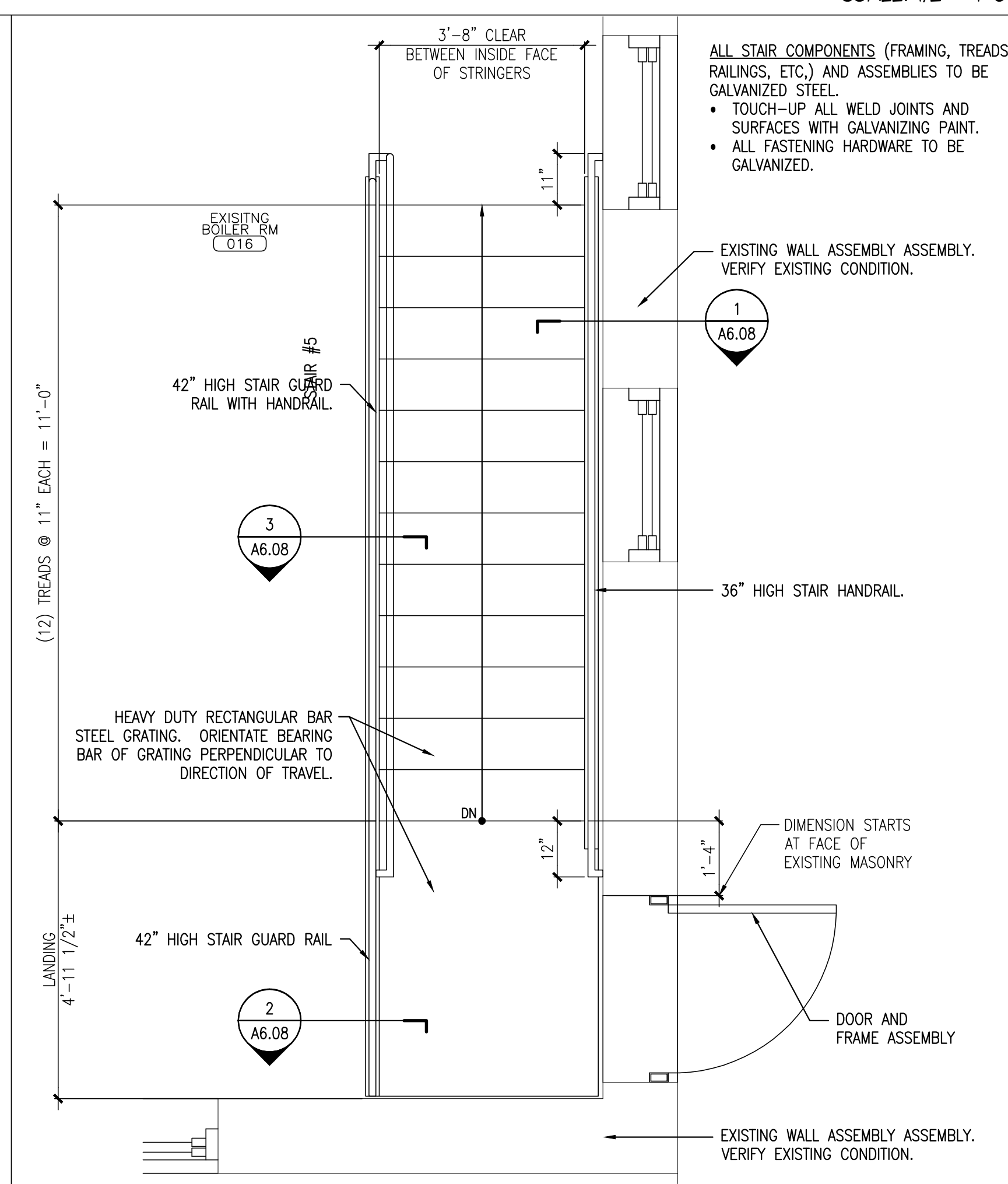
7 SECTION @ STAIR GUARD RAIL W/ HANDRAIL
SCALE: 1/2" = 1'-0"



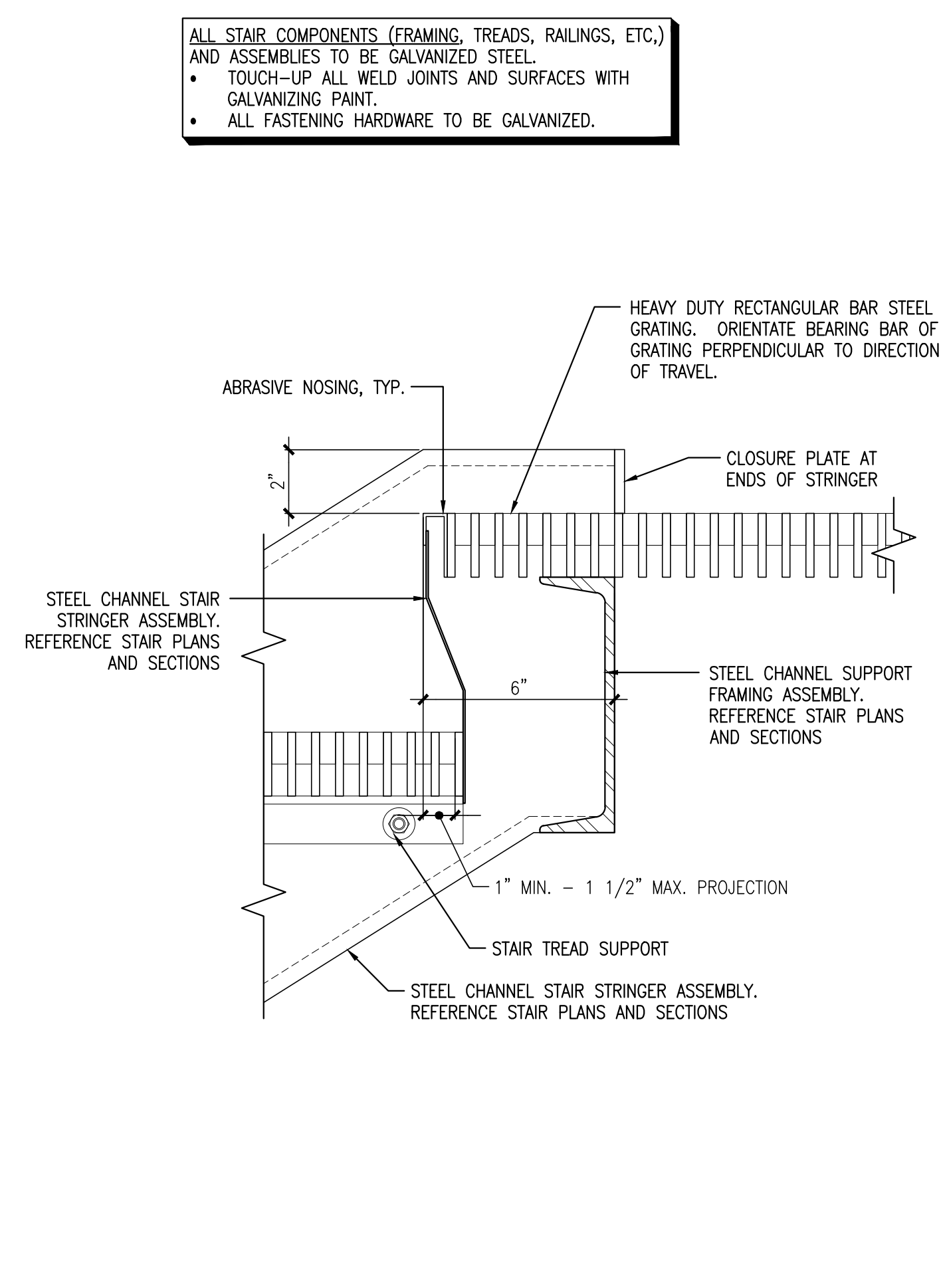
6 SECTION @ STAIR GUARDRAIL
SCALE: 1/2" = 1'-0"



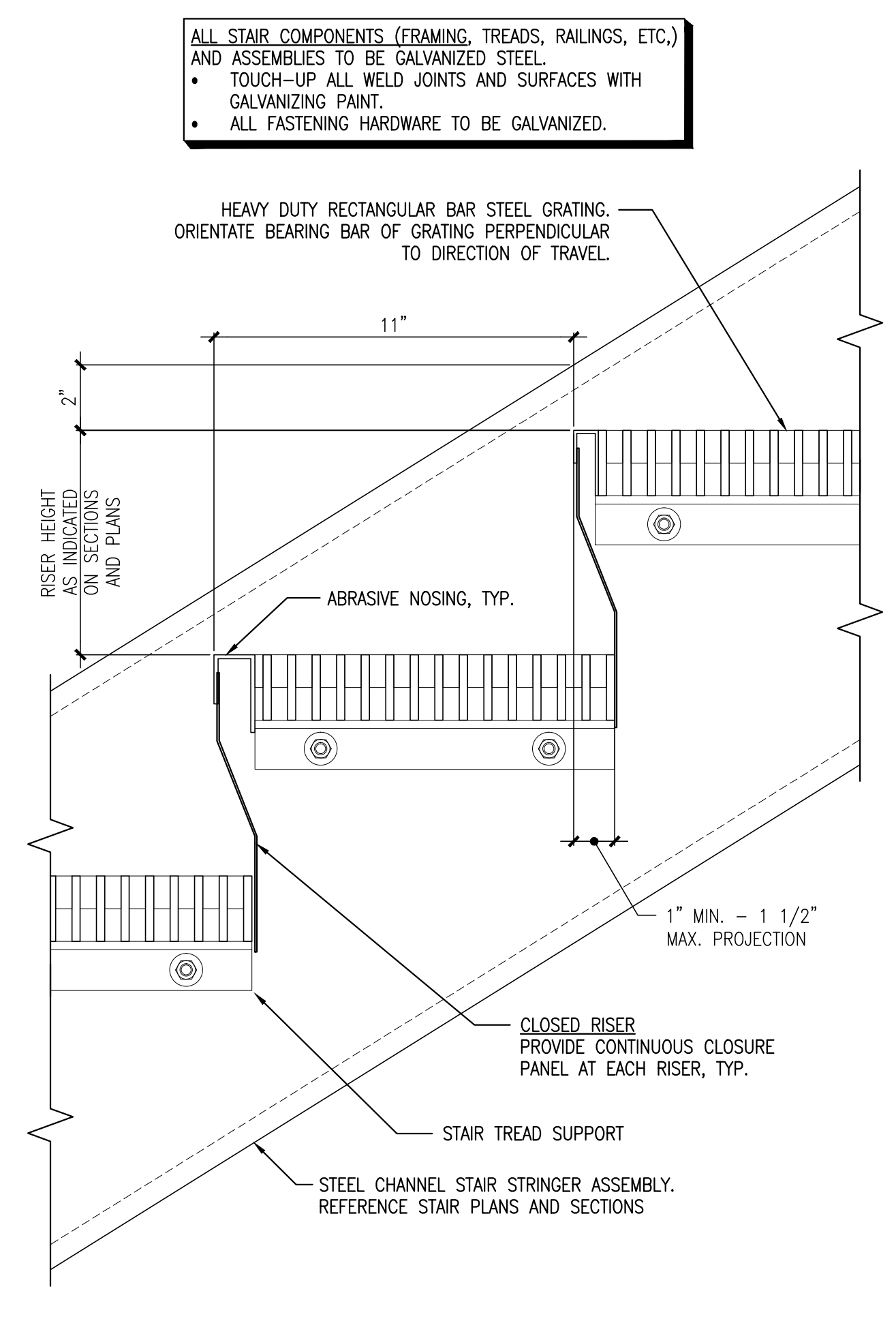
5 SECTION @ STAIR HANDRAIL
REFERENCED FROM: SCALE: 1/2" = 1'-0"



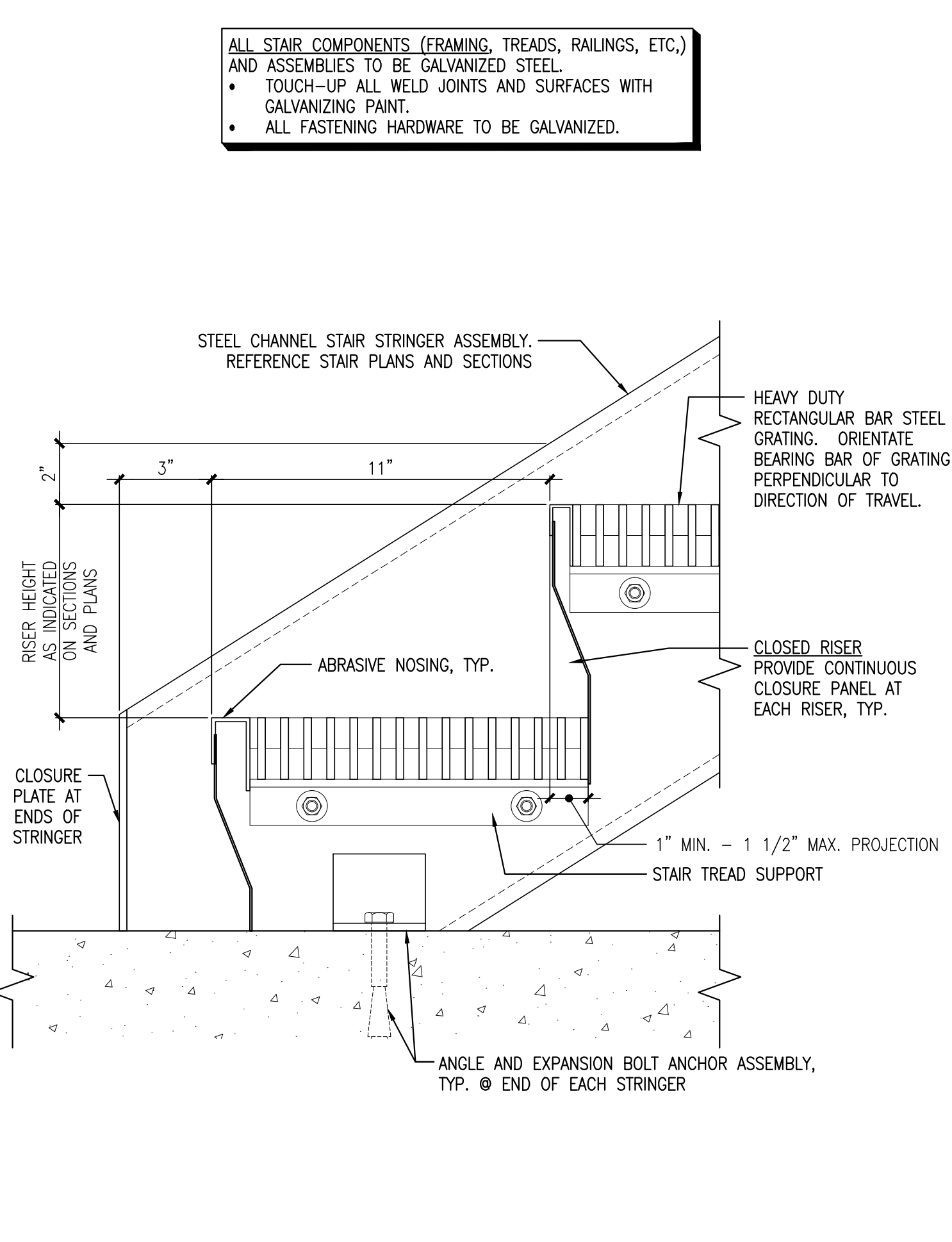
16 ENLARGE PLAN @ STAIR # 5
REFERENCED FROM: SCALE: 1/2" = 1'-0"



15 DETAIL @ TOP OF STAIR
REFERENCED FROM: SCALE: 3/8" = 1'-0"



14 DETAIL @ TYPICAL STAIR TREAD/RISER
REFERENCED FROM: SCALE: 3/8" = 1'-0"



13 DETAIL @ BOTTOM OF STAIR
REFERENCED FROM: SCALE: 3/8" = 1'-0"

ELM TERRACE
68 HIGH STREET
PORTLAND, MAINE

Project No: 09428

Drawing Title:
STAIR PLANS & SECTIONS - STAIR #5

Scale: AS NOTED
Date: ISSUED SEPTEMBER 8, 2011

- Revisions:
- △ MAINE HOUSING CONCEPT SUBMISSION 02-01-2011
 - △ HISTORIC PRESERVATION SUBMISSION 03-23-2011
 - △ 50% MAINEHOUSING REVIEW 04-01-2011
 - △ 90% MAINEHOUSING REVIEW 06-03-2011
 - △ NPS SUBMISSION 07-01-2011
 - △ ISSUED SEPTEMBER 8, 2011

Drawing Number:
A6.08