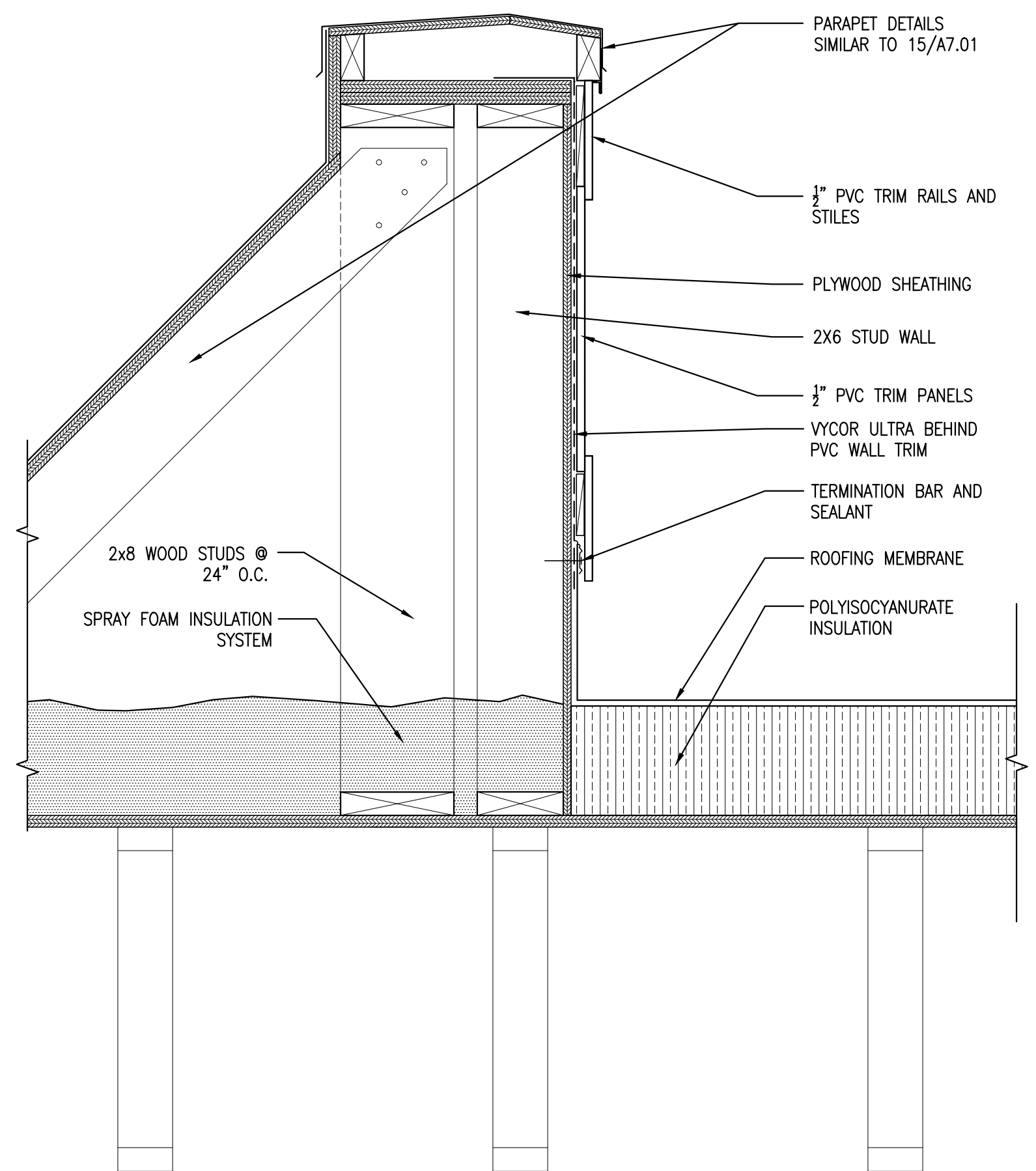


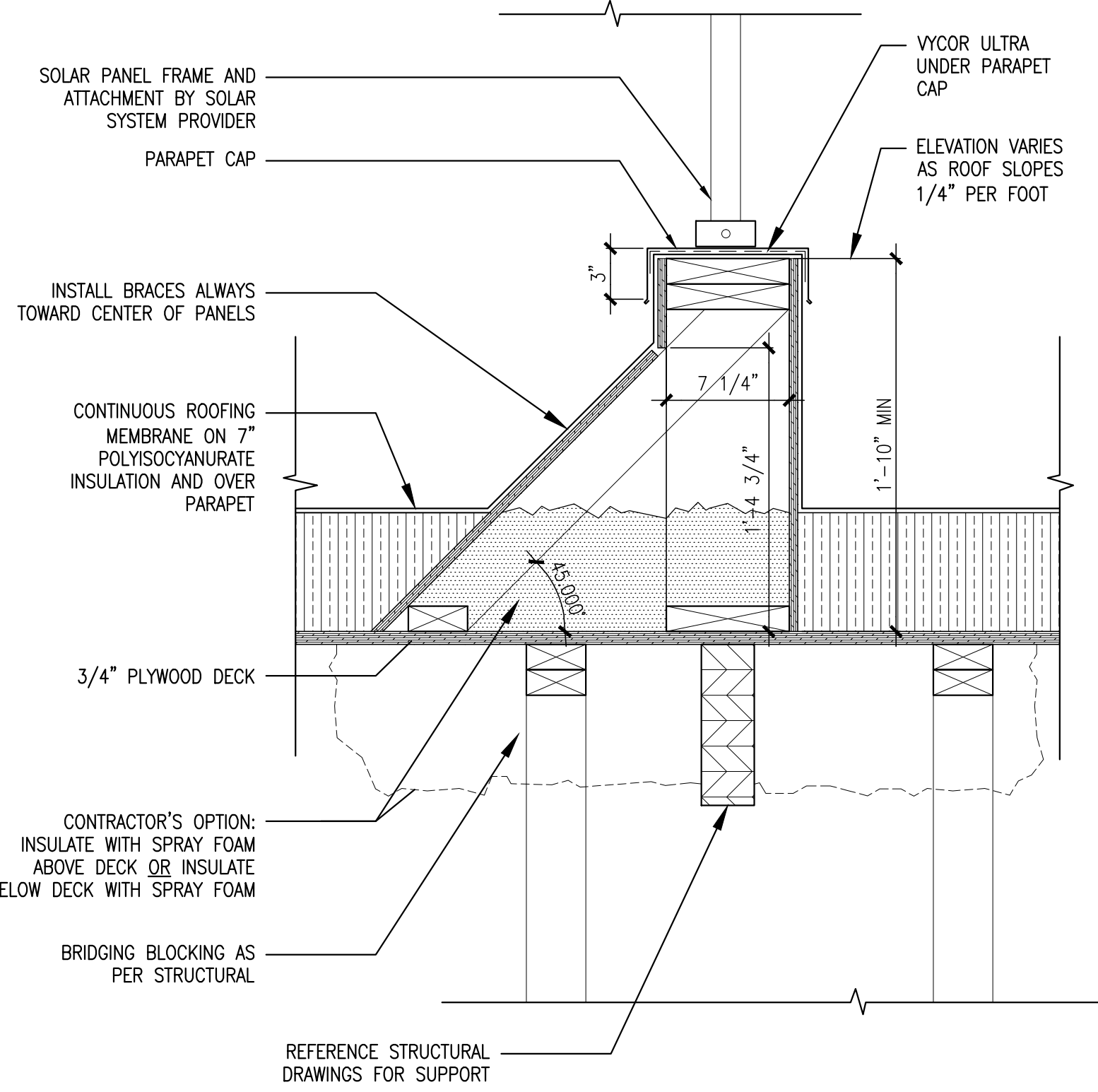
1 PARAPET WALL ACROSS NEW CONSTRUCTION ROOF

SCALE: 3/8"=1'-0"



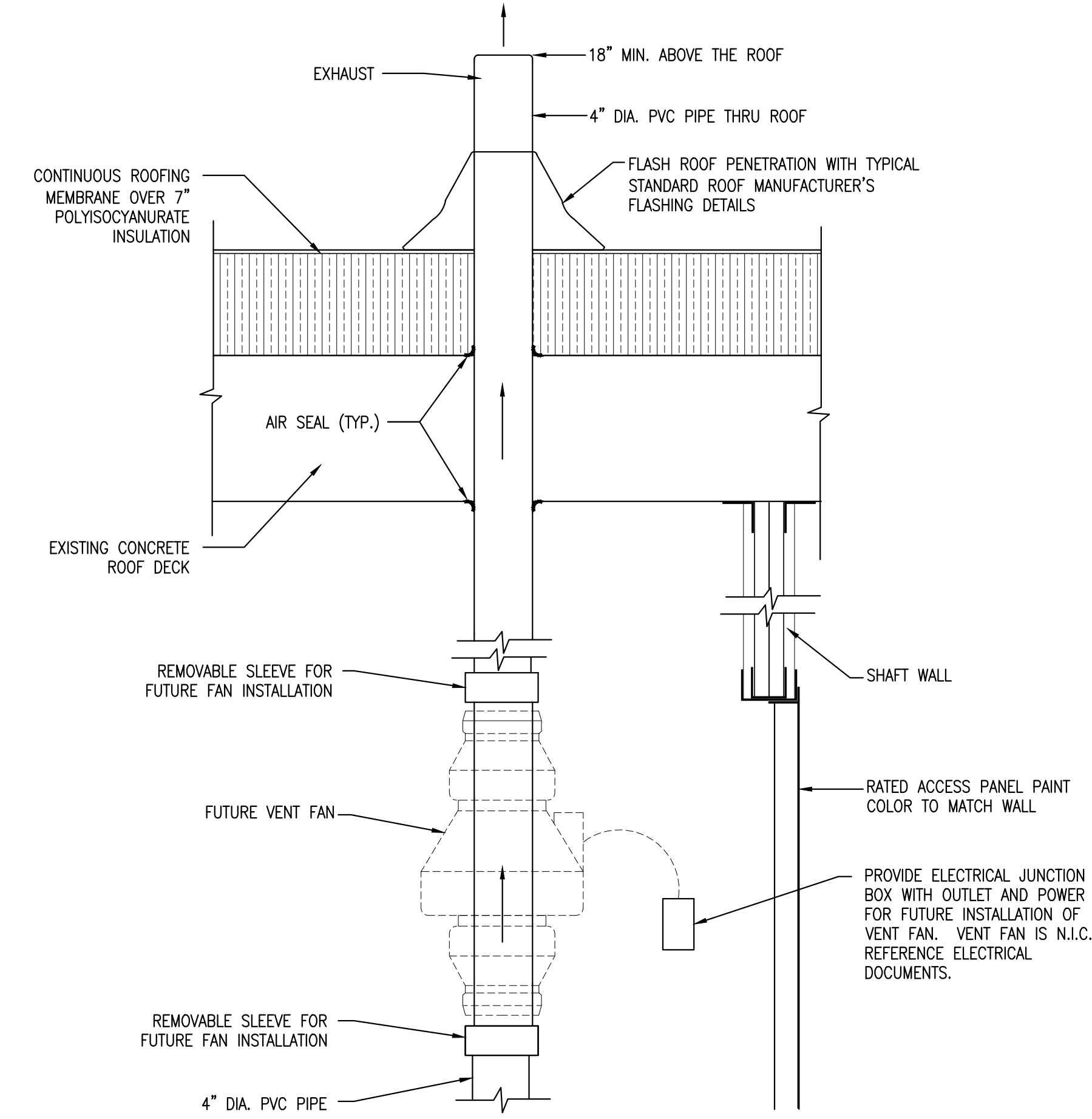
2 PARAPET WALL SECTION

SCALE: 1 1/2"=1'-0"



3 ROOF MOUNTED SOLAR PANEL SUPPORT BASE

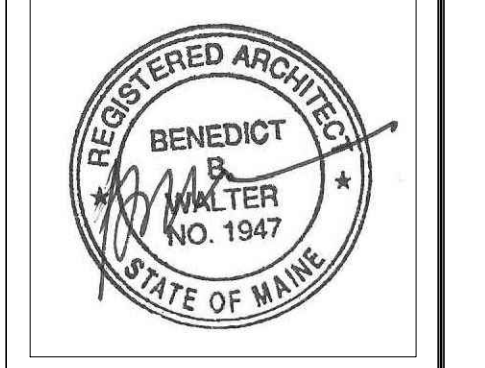
SCALE: 1 1/2"=1'-0"



4 ROOF PENETRATION DETAIL @ RADON RISER

SCALE: 1 1/2"=1'-0"

CWS
CWS Architects
 Architecture
 Space Planning
 Value Design
 434 Cumberland Avenue
 Portland, ME 04101
 Phone: (207)774-4441
 Fax: (207)774-4016
 www.CWSarch.com



Owner:
Children's Hospital Housing Partners, LP
 309 Cumberland Ave.
 Suite 203
 Portland, Maine 04101
 Construction Manager:
WRIGHT-RYAN CONSTRUCTION
 10 DANFORTH STREET
 PORTLAND, ME 04101
 TEL: (207) 773-3625

ELM TERRACE
 68 HIGH STREET
 PORTLAND, MAINE

Project No: 09428

Drawing Title:
BUILDING ELEVATIONS AND DETAILS

Scale: AS NOTED

Date: ISSUED SEPTEMBER 8, 2011

- Revisions:
- △ MAINE HOUSING CONCEPT SUBMISSION 02-01-2011
 - △ HISTORIC PRESERVATION SUBMISSION 03-23-2011
 - △ 50% MAINEHOUSING REVIEW 04-01-2011
 - △ 90% MAINEHOUSING REVIEW 06-03-2011
 - △ NPS SUBMISSION 07-01-2011
 - △ ISSUED SEPTEMBER 8, 2011

Drawing Number:
A3.07