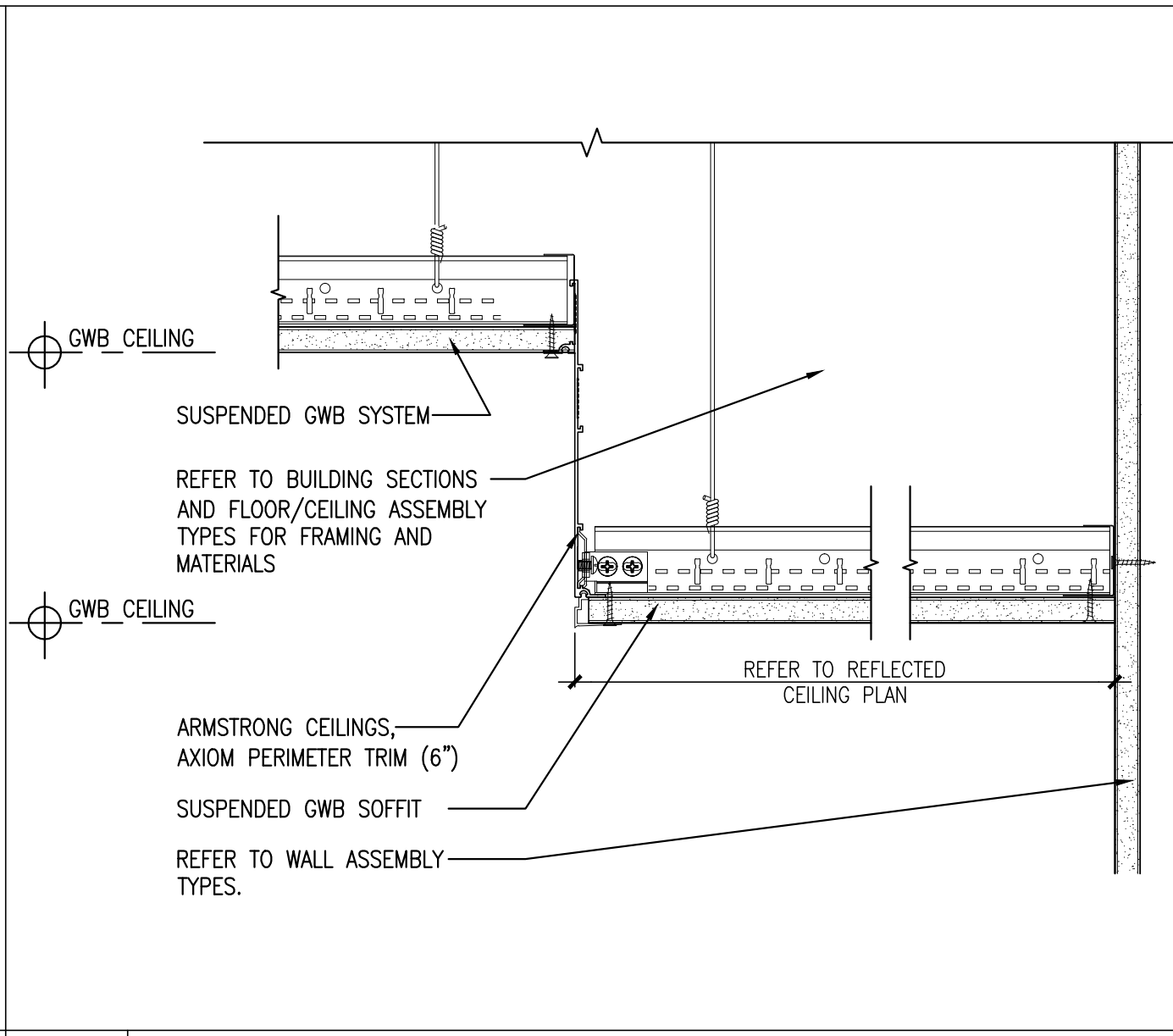
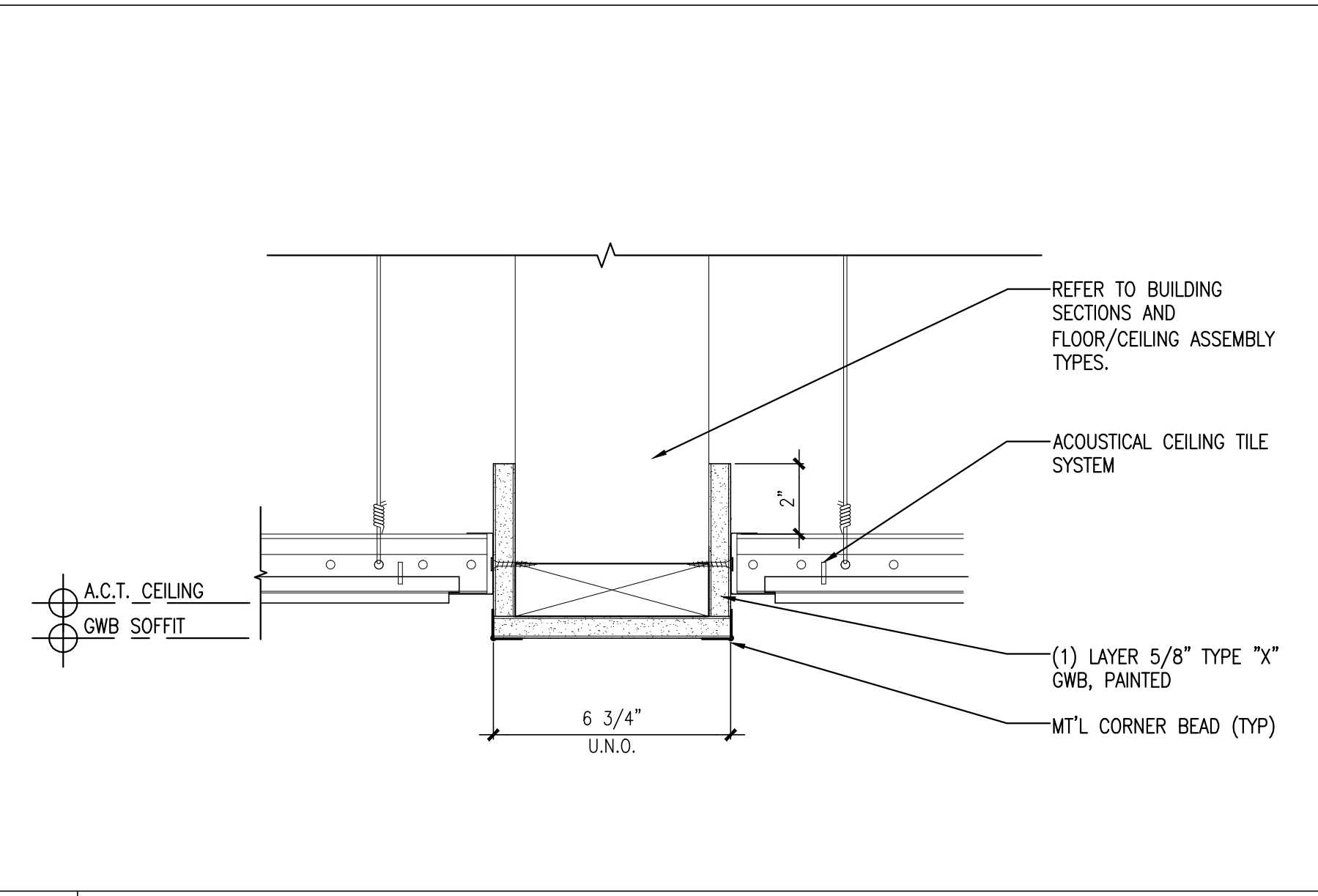


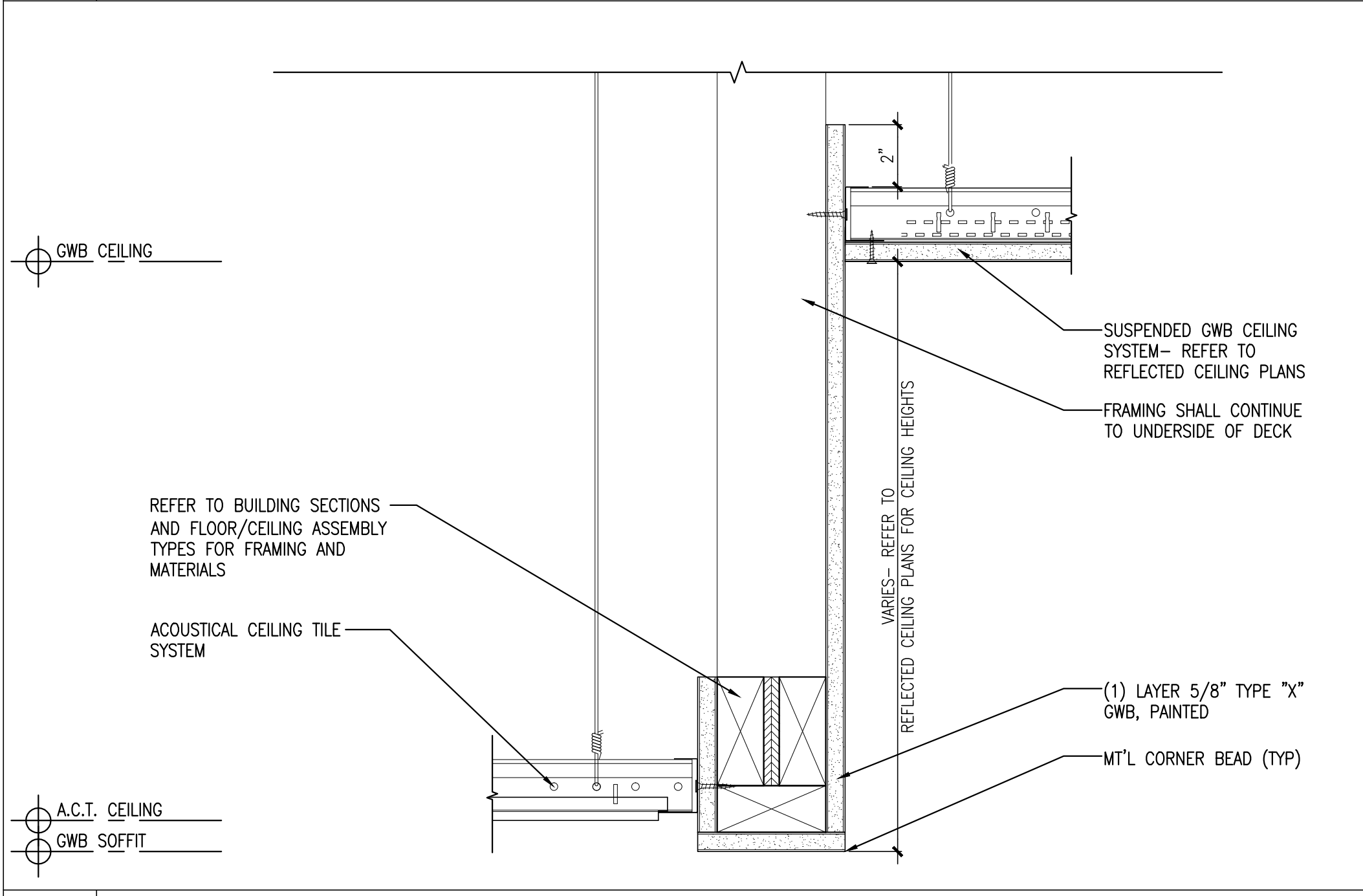
**1** EXISTING COFFER DETAIL  
 REFERENCED FROM: SCALE: 3"=1'-0"



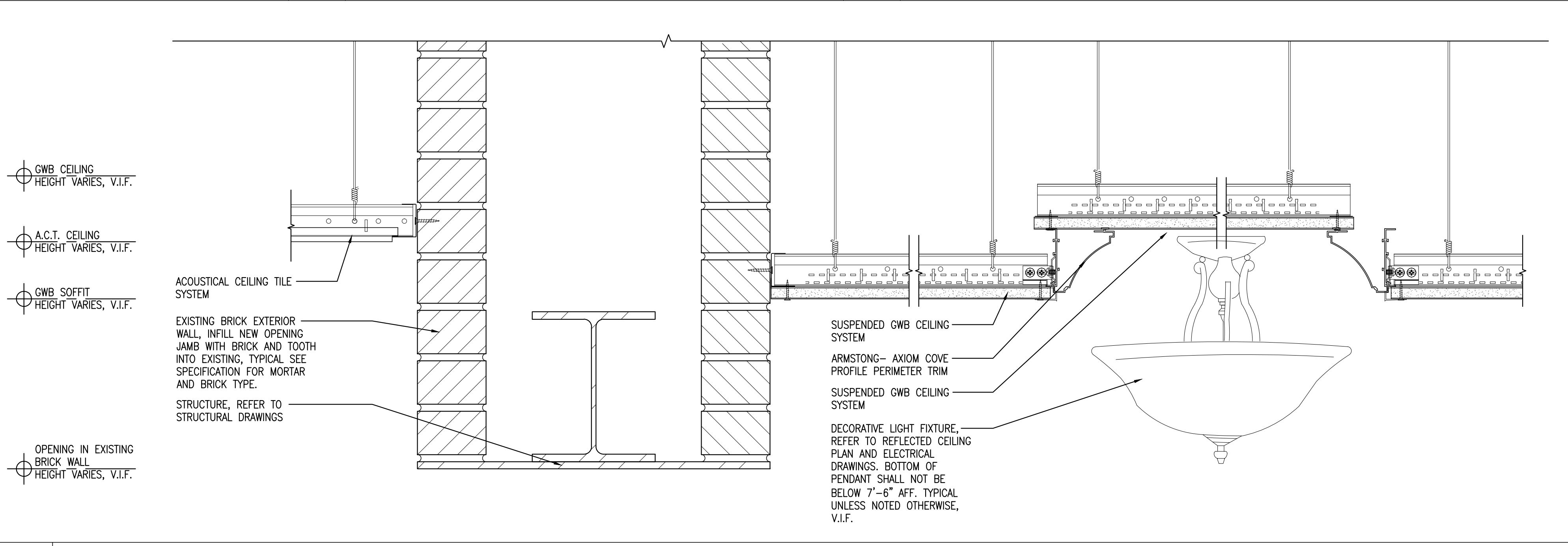
**2** PERIMETER SOFFIT DETAIL  
 REFERENCED FROM: SCALE: 3"=1'-0"



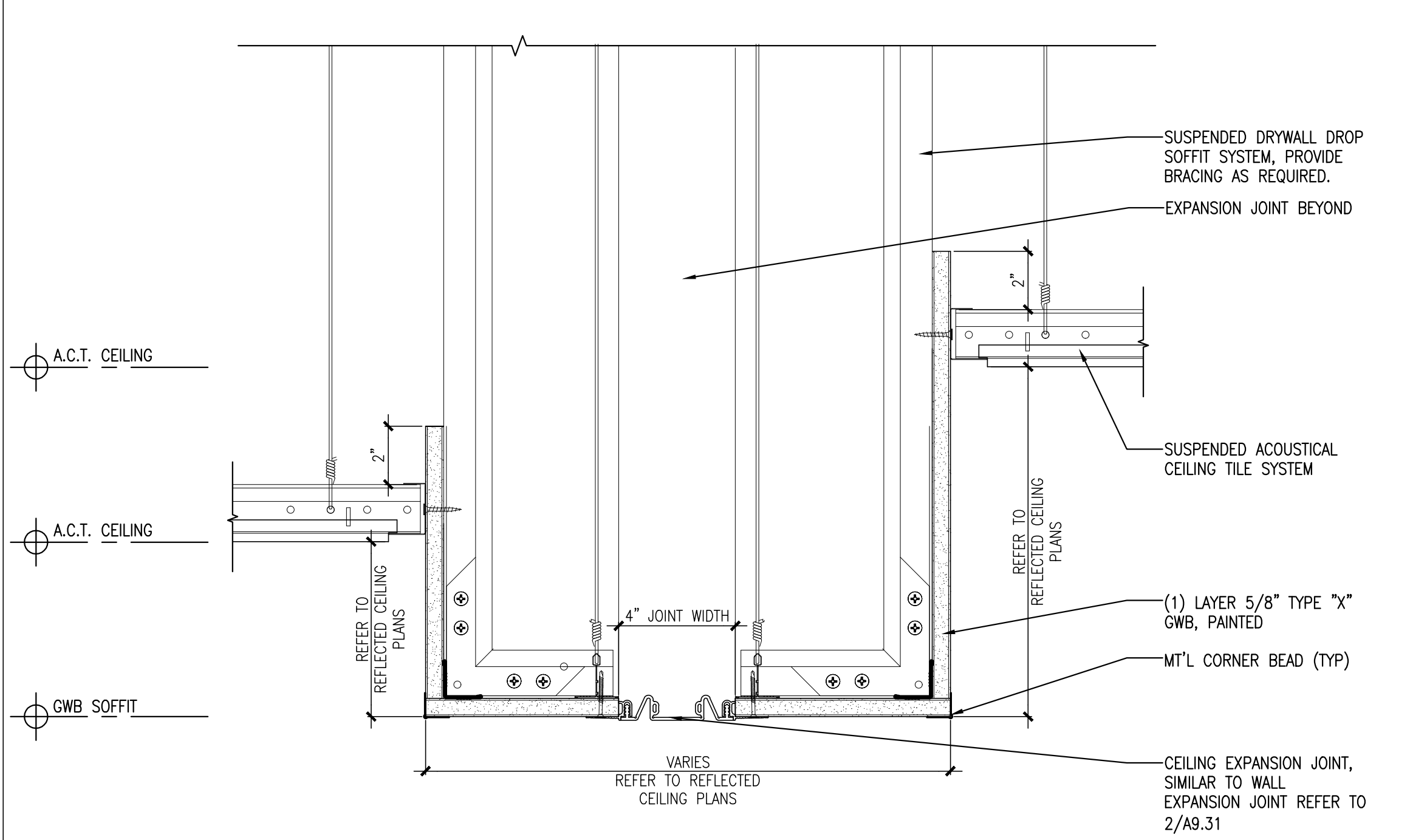
**3** DETAIL @ TRANSITION  
 REFERENCED FROM: SCALE: 3"=1'-0"



**4** CEILING DETAIL  
 REFERENCED FROM: SCALE: 3"=1'-0"



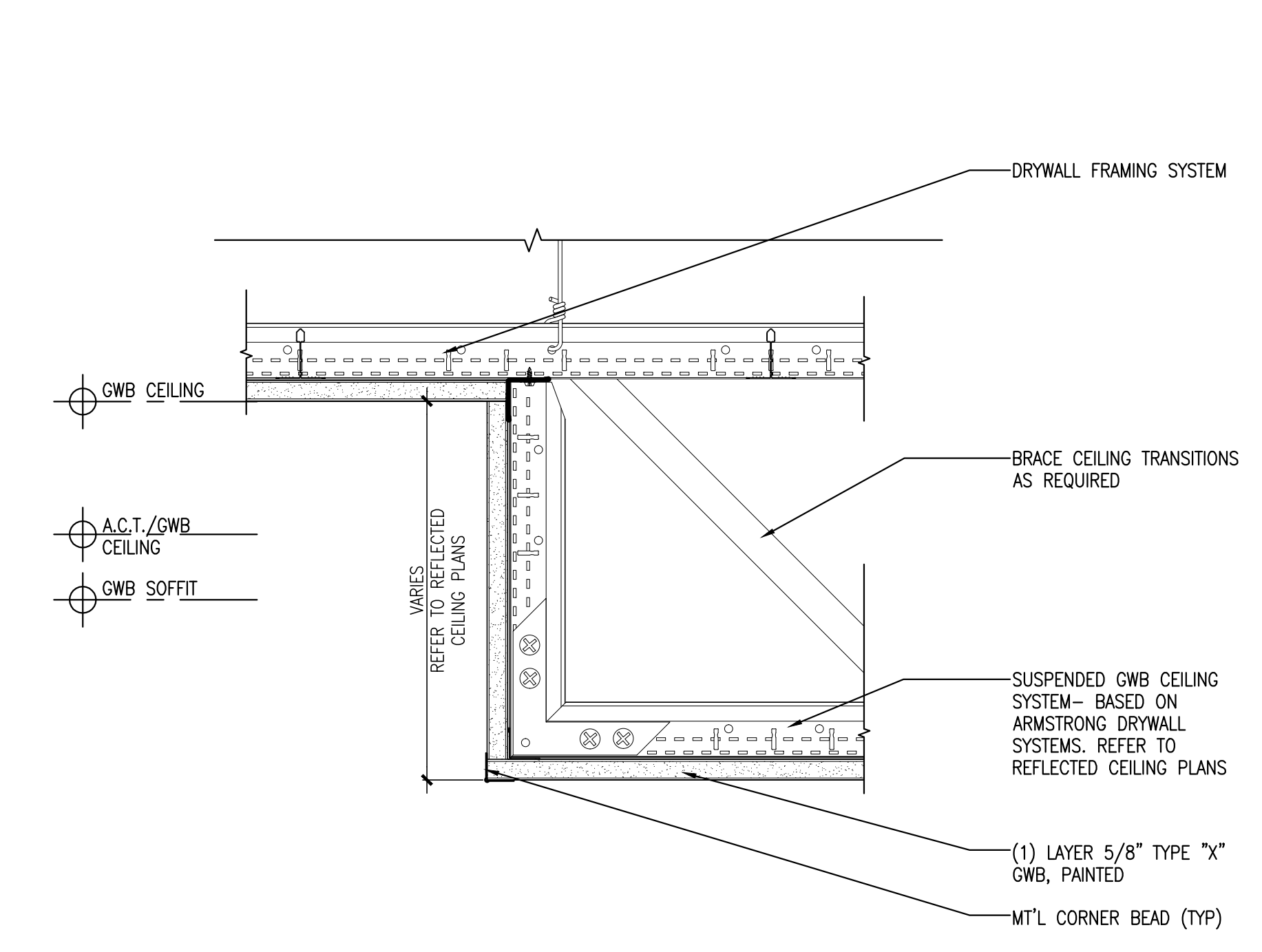
**5** CEILING DETAIL  
 REFERENCED FROM: SCALE: 3"=1'-0"



**6** CEILING DETAIL  
 REFERENCED FROM: SCALE: 3"=1'-0"



**7** NOT USED  
 REFERENCED FROM: SCALE: 3"=1'-0"



**8** DETAIL @ FRAMED HEIGHT TRANSITION  
 REFERENCED FROM: TYPICAL UNIT CEILING CONDITION SCALE: 3"=1'-0"

**CWS Architects**  
 Architecture  
 Space Planning  
 Value Design

434 Cumberland Avenue  
 Portland, ME 04101  
 Phone: (207)774-4441  
 Fax: (207)774-4016

www.CWSarch.com

REGISTERED ARCHITECT  
 BENEDICT  
 WALKER  
 NO. 1947  
 STATE OF MAINE

Owner:  
**Children's Hospital Housing Partners, LP**  
 309 Cumberland Ave.  
 Suite 203  
 Portland, Maine 04101

CONSTRUCTION MANAGER:  
**WRIGHT-RYAN CONSTRUCTION**  
 10 DANFORTH STREET  
 PORTLAND, ME 04101  
 TEL: (207) 773-3625

**ELM TERRACE**  
 68 HIGH STREET  
 PORTLAND, MAINE

Project No: 09428

Drawing Title:  
**REFLECTED CEILING PLAN DETAILS**

Scale: AS NOTED  
 Date: ISSUED SEPTEMBER 8, 2011

Revisions:  
 ▲ MAINE HOUSING CONCEPT SUBMISSION 02-01-2011  
 ▲ HISTORIC PRESERVATION SUBMISSION 03-23-2011  
 ▲ 50% MAINEHOUSING REVIEW 04-01-2011  
 ▲ 90% MAINEHOUSING REVIEW 06-03-2011  
 ▲ NPS SUBMISSION 07-01-2011  
 ▲ ISSUED SEPTEMBER 8, 2011

Drawing Number:  
**A2.10**