

Owner:  
**Children's Hospital Housing Partners, LP**  
309 Cumberland Ave.  
Suite 203  
Portland, Maine 04101

CONSTRUCTION MANAGER:  
**WRIGHT-RYAN CONSTRUCTION**  
10 DANFORTH STREET  
PORTLAND, ME 04101  
TEL: (207) 773-3625

**ELM TERRACE**

68 HIGH STREET  
PORTLAND, MAINE

Project No: 09428

Drawing Title:

**THIRD FLOOR REFLECTED CEILING PLAN**

Scale: AS NOTED

Date: ISSUED SEPTEMBER 8, 2011

Revisions:

- △ MAINE HOUSING CONCEPT SUBMISSION 02-01-2011
- △ HISTORIC PRESERVATION SUBMISSION 03-23-2011
- △ 50% MAINEHOUSING REVIEW 04-01-2011
- △ 90% MAINEHOUSING REVIEW 06-03-2011
- △ NPS SUBMISSION 07-01-2011
- △ ISSUED SEPTEMBER 8, 2011

Drawing Number:

**A2.03**

REFLECTED CEILING PLAN LEGEND:

- A DECORATIVE CHANDELIER
- B 6" RECESSED DOWNLIGHT
- C DECORATIVE LARGE PENDANT
- D DECORATIVE CHANDELIER
- E UNDER CABINET LIGHT, ENERGY STAR
- F CEILING FLUSH MOUNT
- G VANITY LIGHT
- H WALL SCONCE, MOUNTED 6'-8" TO BOTTOM OF SCONCE
- J DECORATIVE MINI PENDANT
- K 1X4 ACRYLIC LENS FLUORESCENT
- L 2X4 DIRECT/ INDIRECT FLUORESCENT
- M 2X2 DIRECT/ INDIRECT FLUORESCENT
- N DECORATIVE PENDANT
- P CONCEALED COVE LIGHTING

NOTES:

1. INTERIOR FIXTURE LEGEND FOR DESIGN INTENT ONLY. REFER TO ELECTRICAL DRAWINGS FOR LIGHT FIXTURE SCHEDULE AND CIRCUITING.
2. MECHANICAL SUBCONTRACTOR TO VERIFY SIZE AND LOCATION OF ANY MECHANICAL REGISTERS WITH ARCHITECT PRIOR TO CONSTRUCTION. LIGHTING LOCATIONS SHALL TAKE PRECEDENCE.
3. REFER TO DRAWINGS A1.20-A1.43 FOR LIGHT FIXTURE LAYOUT @ TYPICAL UNIT REFLECTED CEILING PLANS.
4. LIGHT FIXTURES SHALL BE CENTERED IN ACOUSTICAL TILE.
5. EXPOSED STEEL AT EXISTING FLOOR CEILING ASSEMBLIES THAT DO NOT HAVE A MINIMUM OF 1 HOUR FIRE RATED ASSEMBLY ISOLATION REQUIRE INTUMESCENT COATING. REFER TO DETAIL 6/A2.11, TYPICAL.
6. SUSPENDED CEILING ASSEMBLIES IN MECHANICAL ROOM SHALL BE ISOLATED FROM FLOOR STRUCTURE ABOVE TO PREVENT SOUND TRANSMISSION.
7. PROVIDE CEILING PAINT AT ALL EXPOSED CEILING.
8. ALL GWB CEILING SHALL BE PAINTED PO, UNLESS NOTED OTHERWISE. REFER TO INTERIOR FINISH LEGEND.

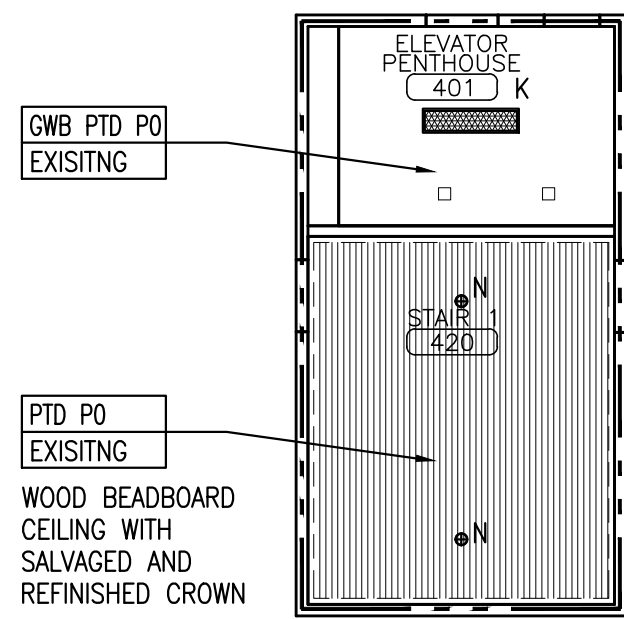
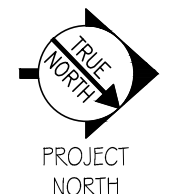
EXTENTS OF CROWN MOULDING, MATCH EXISTING PROFILE UNLESS OTHERWISE NOTED.

CLG FINISH  
CLG HEIGHT

CEILING TAG

WALL PARTITION LEGEND

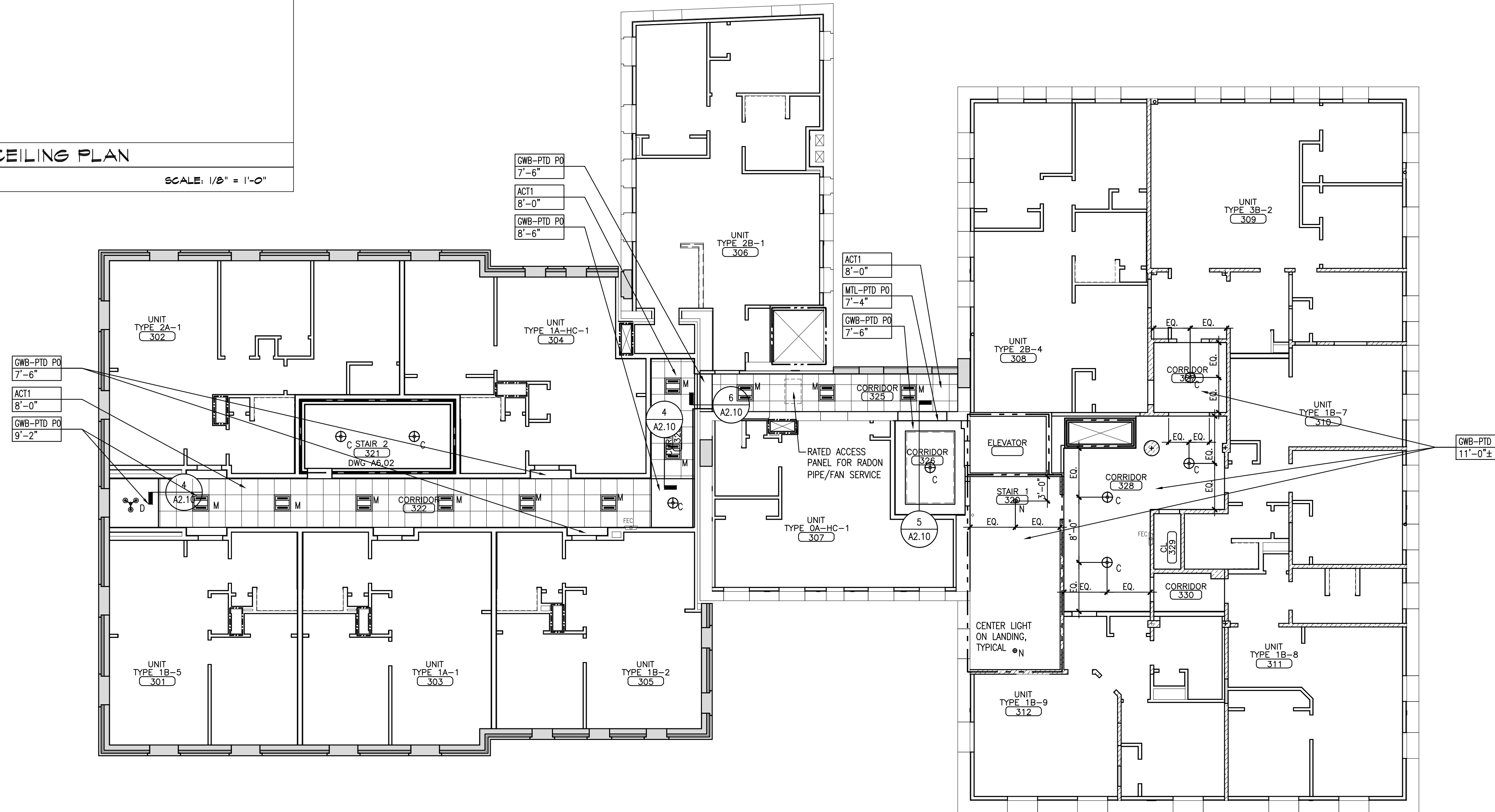
- = EXISTING WALL/PARTITION ASSEMBLY TO REMAIN
- ▨ = EXISTING HISTORICAL SIGNIFICANT WALL/PARTITION ASSEMBLY TO REMAIN AS IS.
  - ANY WORK IMPACTING THESE WALLS/PARTITIONS MUST BE AUTHORIZED BY OWNER/ARCHITECT AND HISTORICAL REVIEW TEAM
- - - = EXISTING WALL/PARTITION TO BE REMOVED.
  - OTHER DASHED ITEMS WITHIN REMOVALS PLANS ARE ALSO TO BE REMOVED.
  - REFERENCE REMOVAL PLANS AND NOTES.
- = NEW WALL/PARTITION ASSEMBLY.
  - REFERENCE PARTITION SCHEDULE
- = INDICATES FIRE RATED WALL/PARTITION ASSEMBLY.
  - REFERENCE PARTITION SCHEDULE



**1 ROOF REFLECTED CEILING PLAN**

REFERENCED FROM:

SCALE: 1/8" = 1'-0"



**1 THIRD FLOOR REFLECTED CEILING PLAN**

SCALE: 1/8" = 1'-0"