

ELEVATION 'A'
 NOTES:
 1. VERIFY OVERALL KITCHEN DIMENSIONS PRIOR TO PREPARING SHOP DRAWINGS.

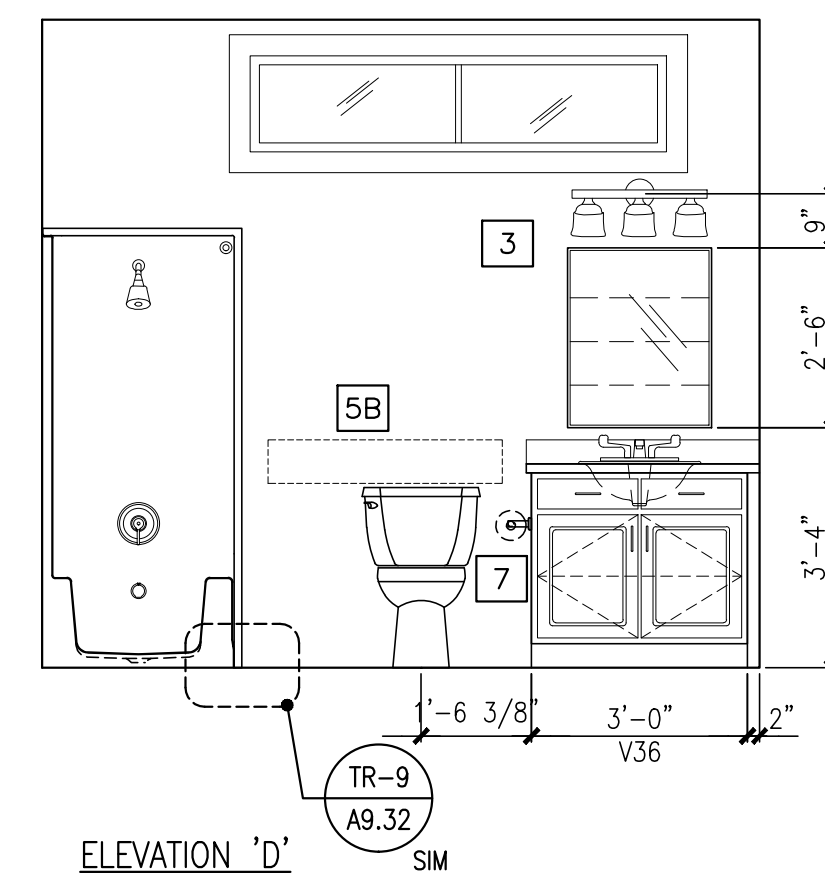
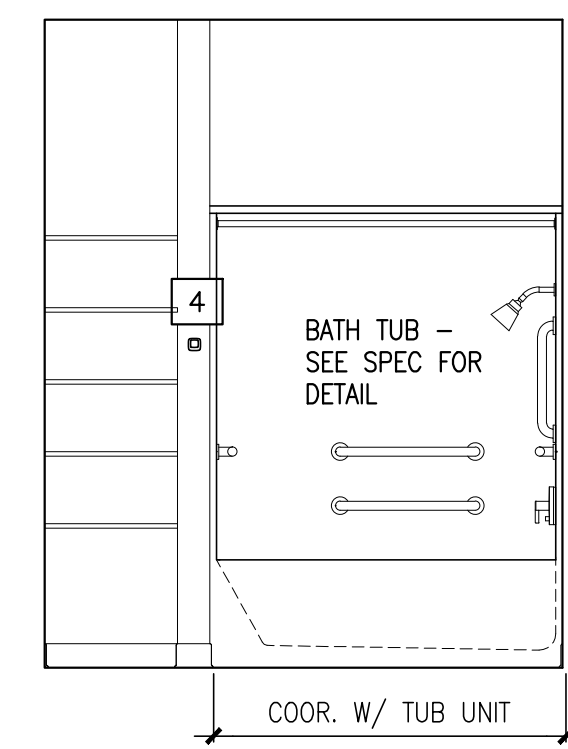
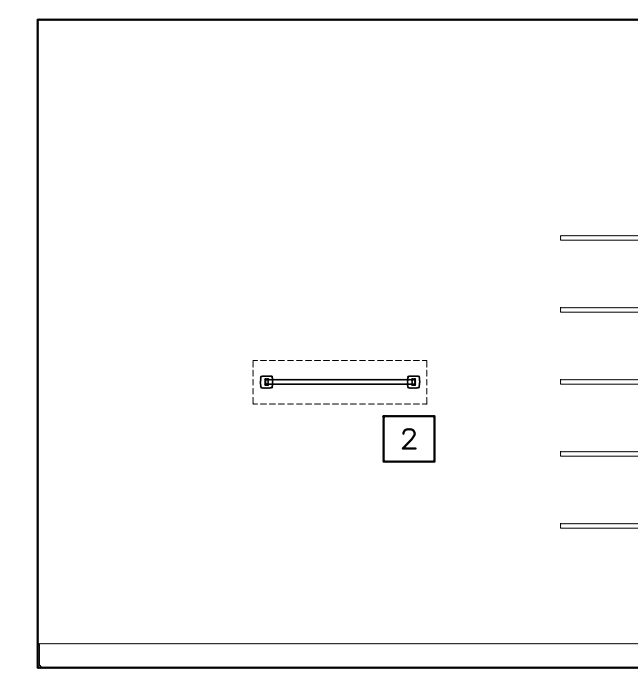
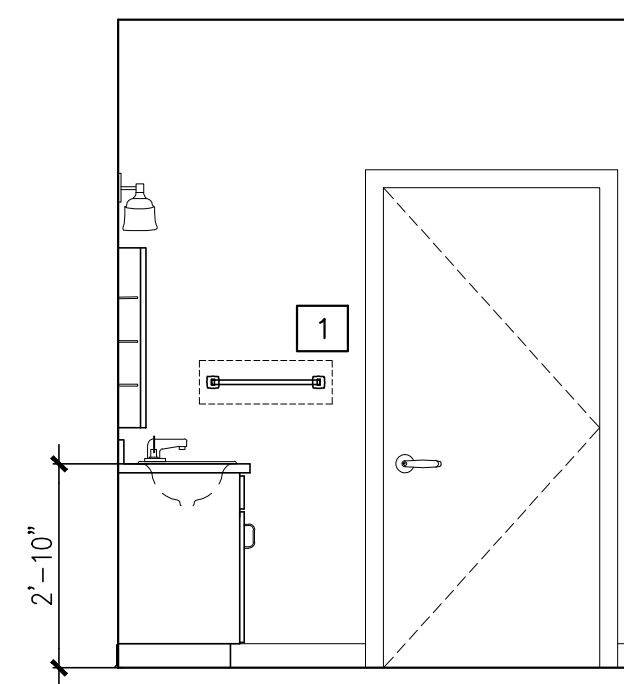
1 KITCHEN ELEVATIONS
 REFERENCED FROM: FLOOR PLANS

SCALE: 3/8" = 1'-0"

2 ENTRY ELEVATION
 REFERENCED FROM: FLOOR PLANS

SCALE: 3/8" = 1'-0"

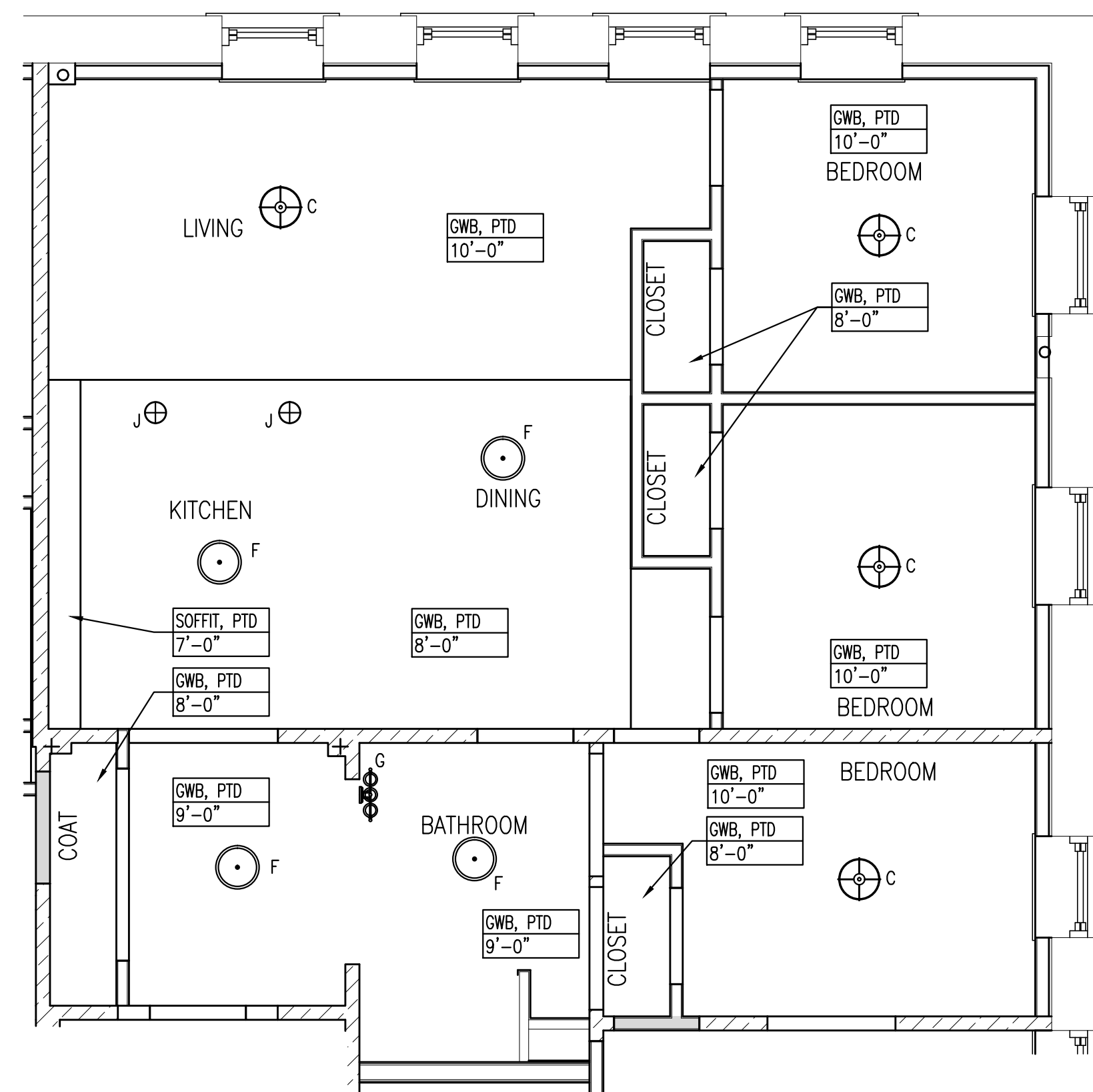
NOTE: REFER TO 3/A1.21 FOR BATHROOM ACCESSORY LEGEND AND NOTES.



NOTE:
 1. REFER TO A9.32 FOR TRANSITION DETAILS (TR)
 2. ROOM DIMENSIONS AND SQUARE FOOTAGES ARE INFORMATIONAL ONLY AND SHALL NOT BE USED FOR CONSTRUCTION PURPOSES.
 3. ROOM DIMENSIONS ARE FROM FACE OF FINISH WALL TO FACE OF FINISHED WALL.

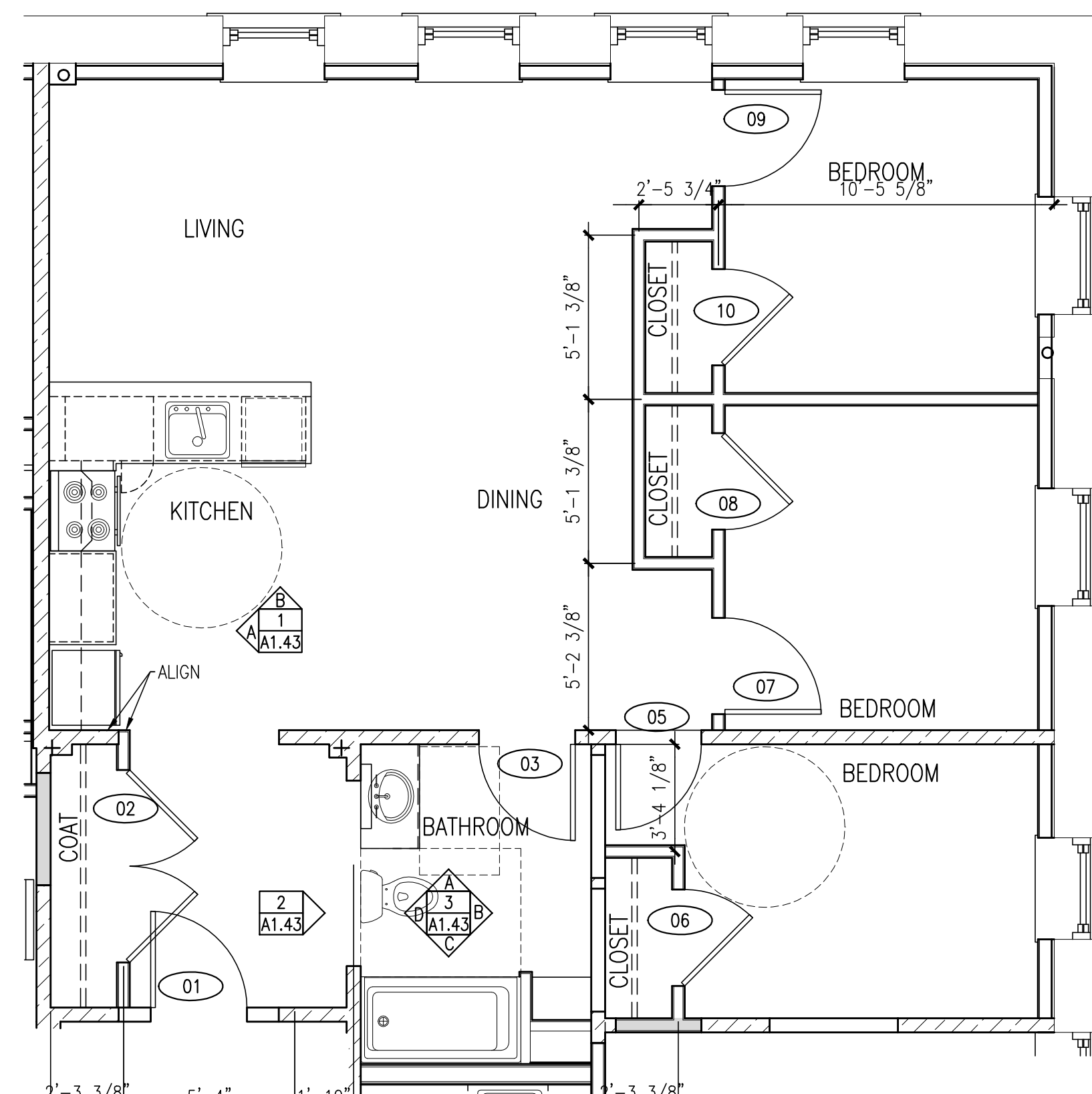
2 BATHROOM ELEVATIONS
 REFERENCED FROM: FLOOR PLANS

SCALE: 3/8" = 1'-0"



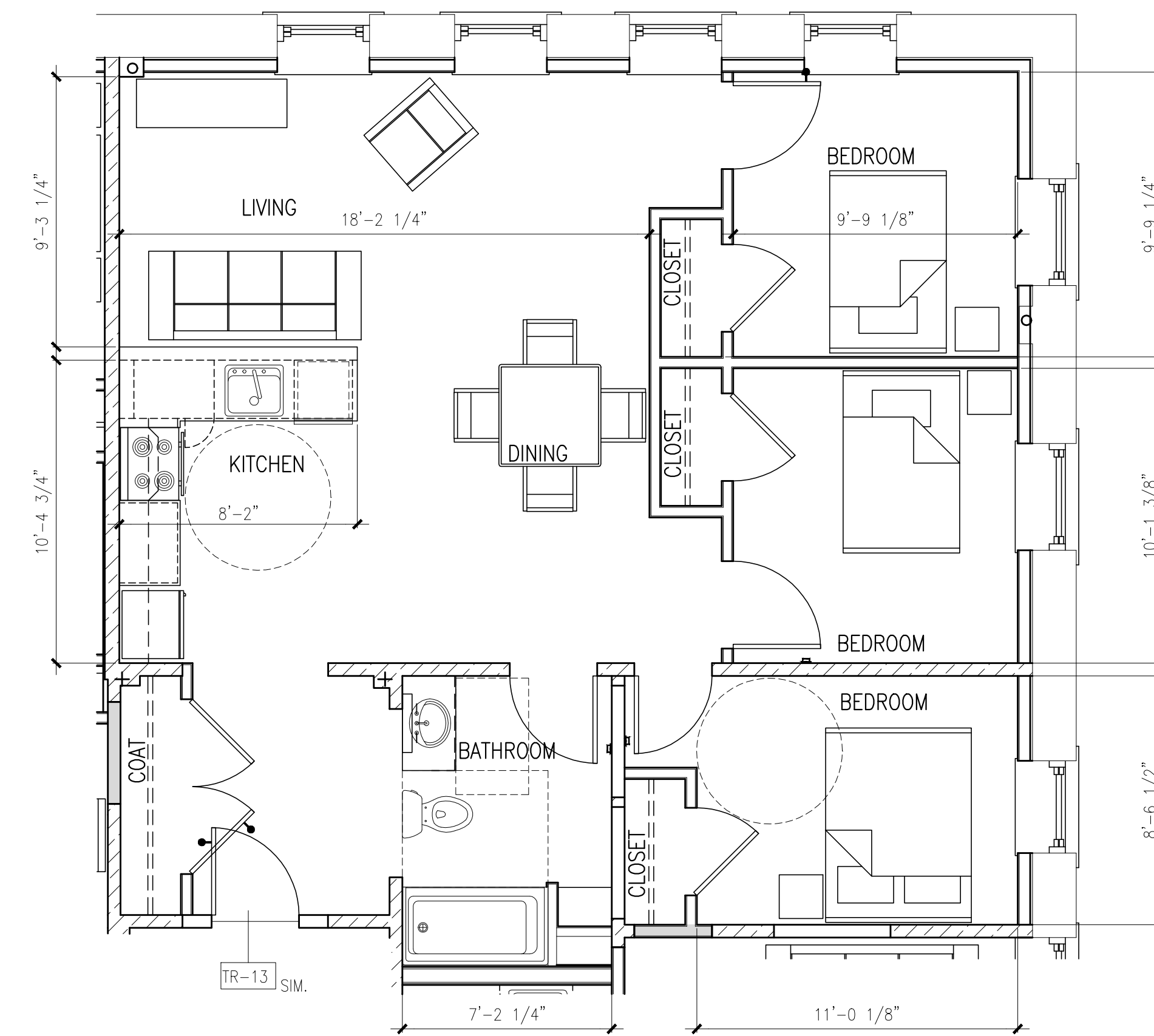
A UNIT TYPE 3B-2 - REFLECTED CEILING PLAN
 REFERENCED FROM: UNIT 304

SCALE: 1/4" = 1'-0"



B UNIT TYPE 3B-2 - DIMENSIONAL PLAN
 REFERENCED FROM: UNIT 304

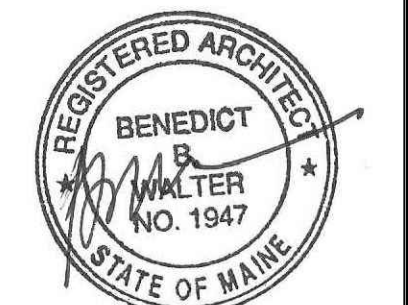
SCALE: 1/4" = 1'-0"



C UNIT TYPE 3B-2 - LAYOUT FLOOR PLAN
 REFERENCED FROM: UNIT 304

SCALE: 1/4" = 1'-0"

CWS Architects
 Architecture
 Space Planning
 Value Design
 434 Cumberland Avenue
 Portland, ME 04101
 Phone: (207)774-4441
 Fax: (207)774-4016
 www.CWSarch.com



Owner:
Children's Hospital Housing Partners, LP
 309 Cumberland Ave.
 Suite 203
 Portland, Maine 04101
 CONSTRUCTION MANAGER:
WRIGHT-RYAN CONSTRUCTION
 10 DANFORTH STREET
 PORTLAND, ME 04101
 TEL: (201) 773-3625

ELM TERRACE
 68 HIGH STREET
 PORTLAND, MAINE

Project No: 09428

Drawing Title:
TYPE 3B-2 FLOOR PLANS, RCP, INT. ELEVS

- Scale: AS NOTED
 Date: ISSUED SEPTEMBER 8, 2011
 Revisions:
 MAINE HOUSING CONCEPT SUBMISSION 02-01-2011
 HISTORIC PRESERVATION SUBMISSION 03-23-2011
 50% MANHOUSING REVIEW 04-01-2011
 90% MANHOUSING REVIEW 06-03-2011
 NPS SUBMISSION 07-01-2011
 ISSUED SEPTEMBER 8, 2011

Drawing Number:

A1.43