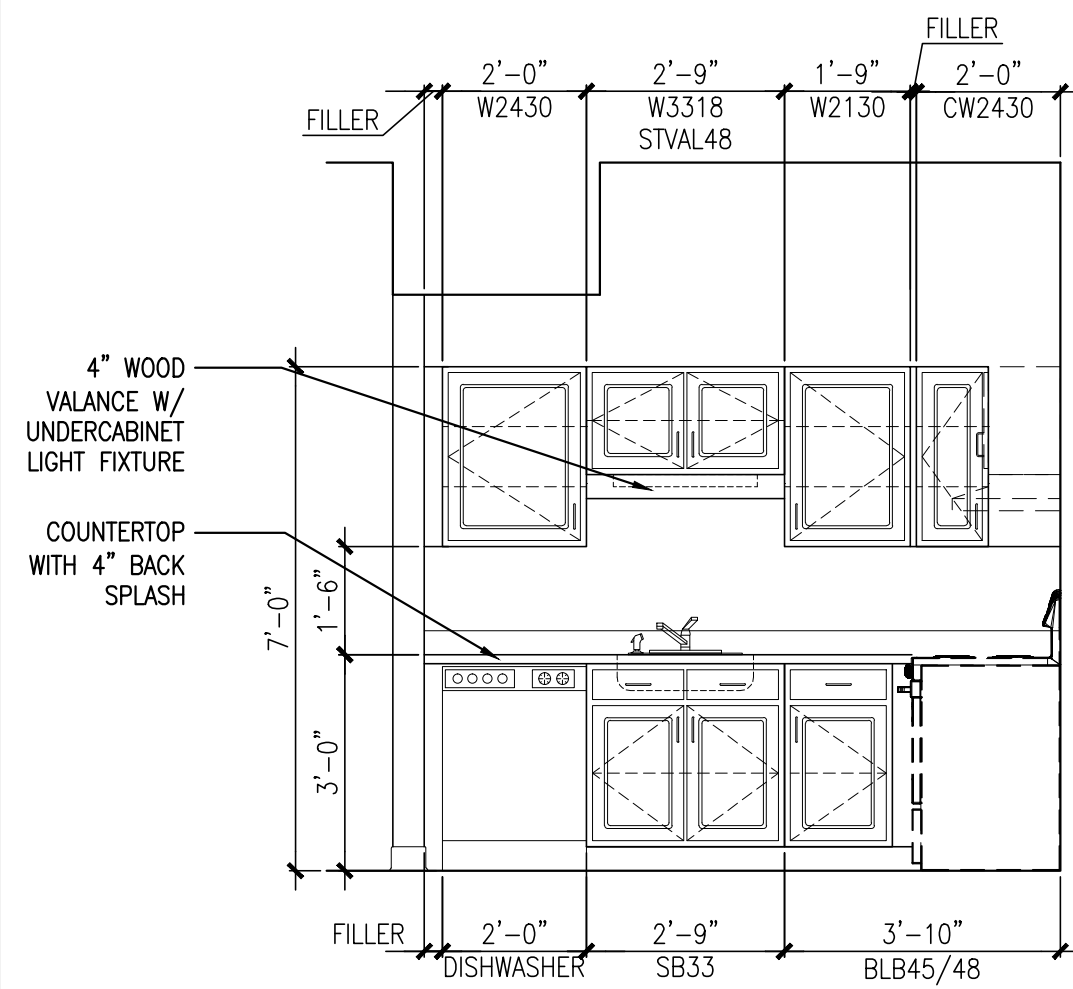
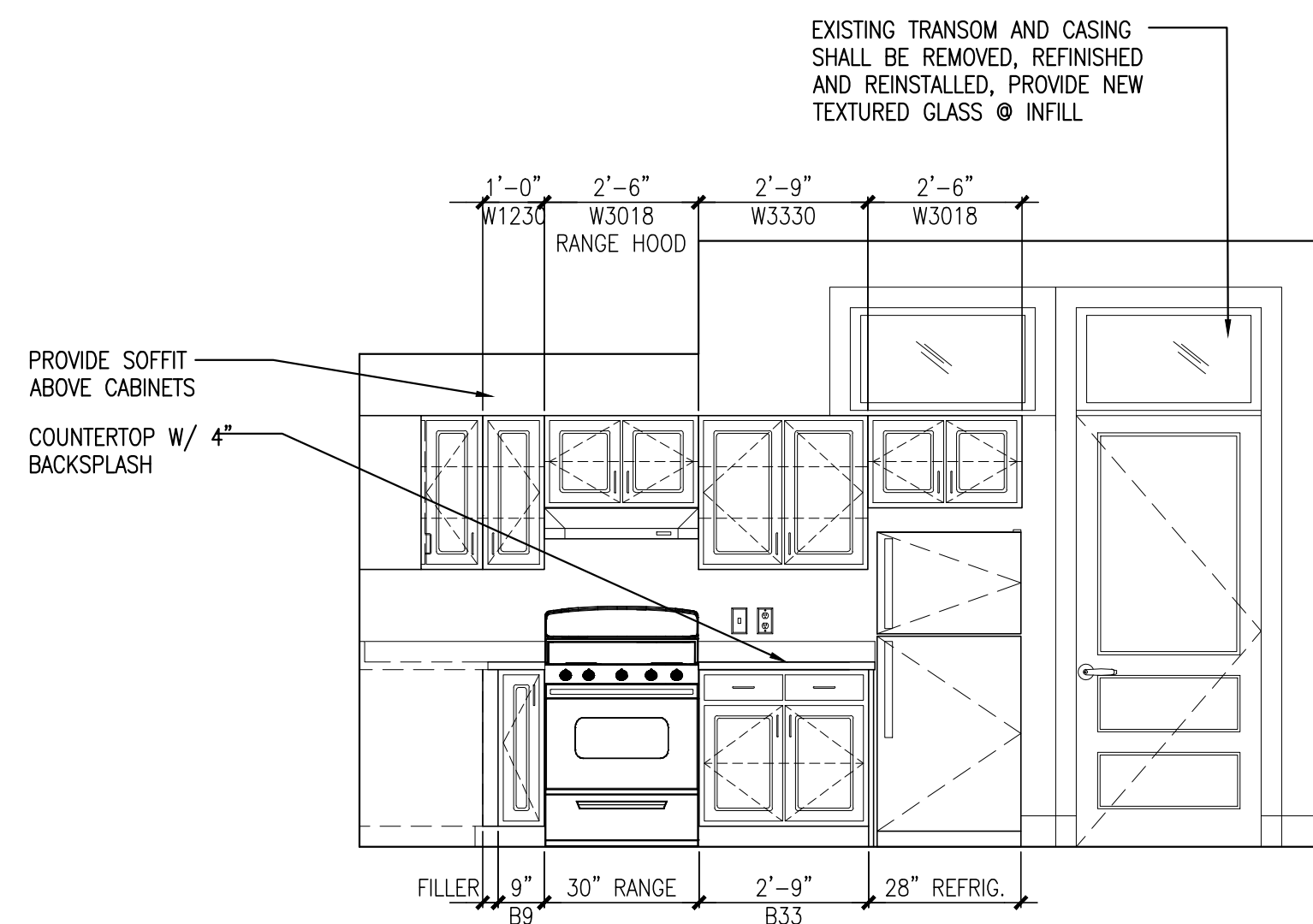


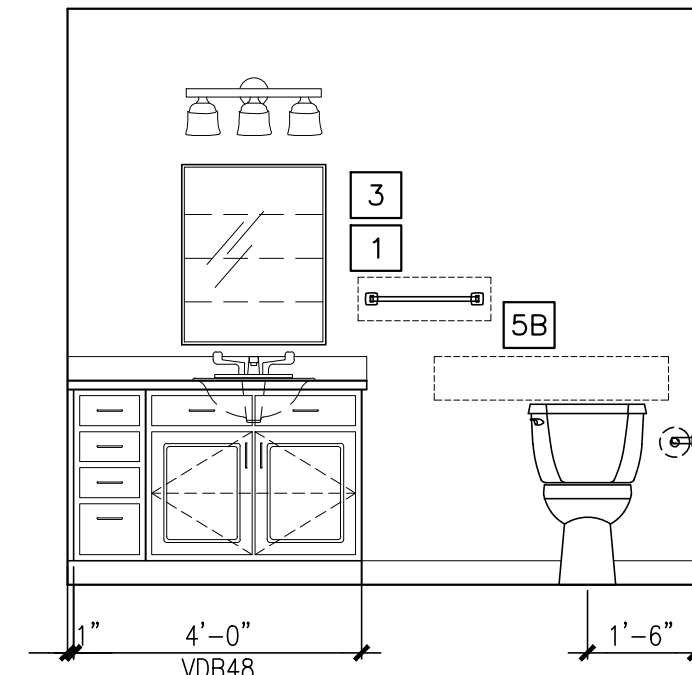
NOTES:
1. VERIFY OVERALL KITCHEN DIMENSIONS PRIOR TO PREPARING SHOP DRAWINGS.



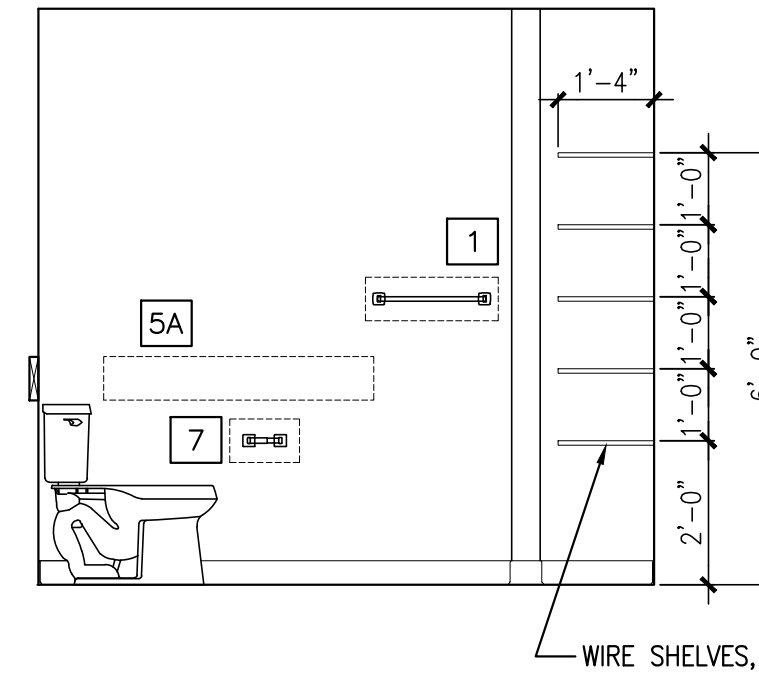
ELEVATION 'A'



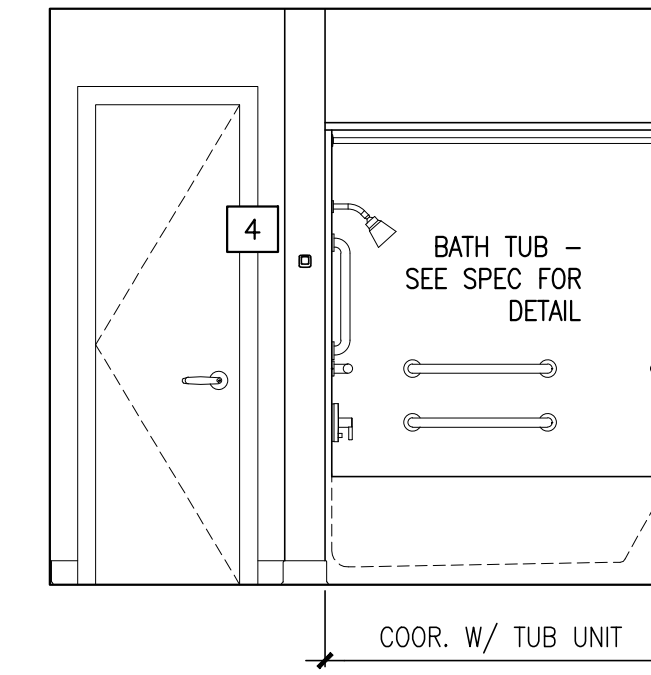
ELEVATION 'B'



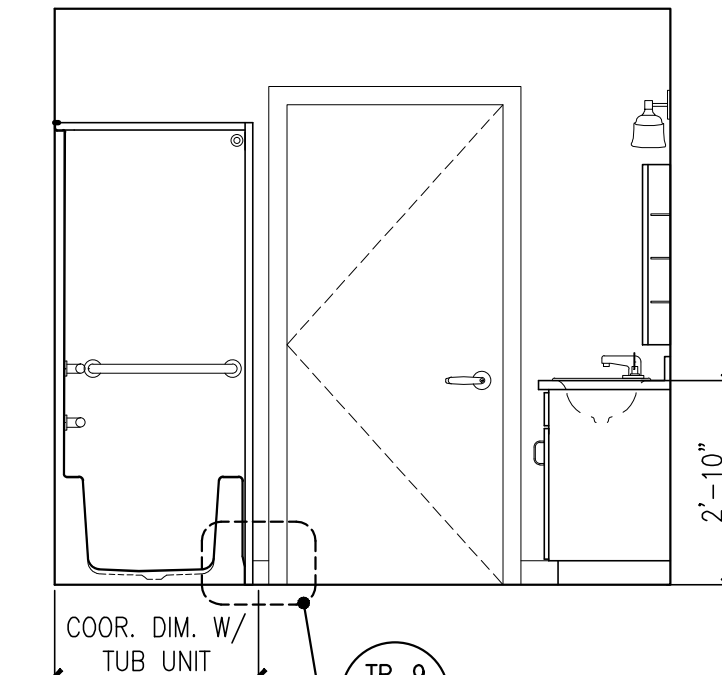
ELEVATION 'A'



ELEVATION 'B'



ELEVATION 'C'



ELEVATION 'D'

NOTE: REFER TO 3/A1.21 FOR BATHROOM ACCESSORY LEGEND AND NOTES.

1 KITCHEN ELEVATIONS

REFERENCED FROM: FLOOR PLANS

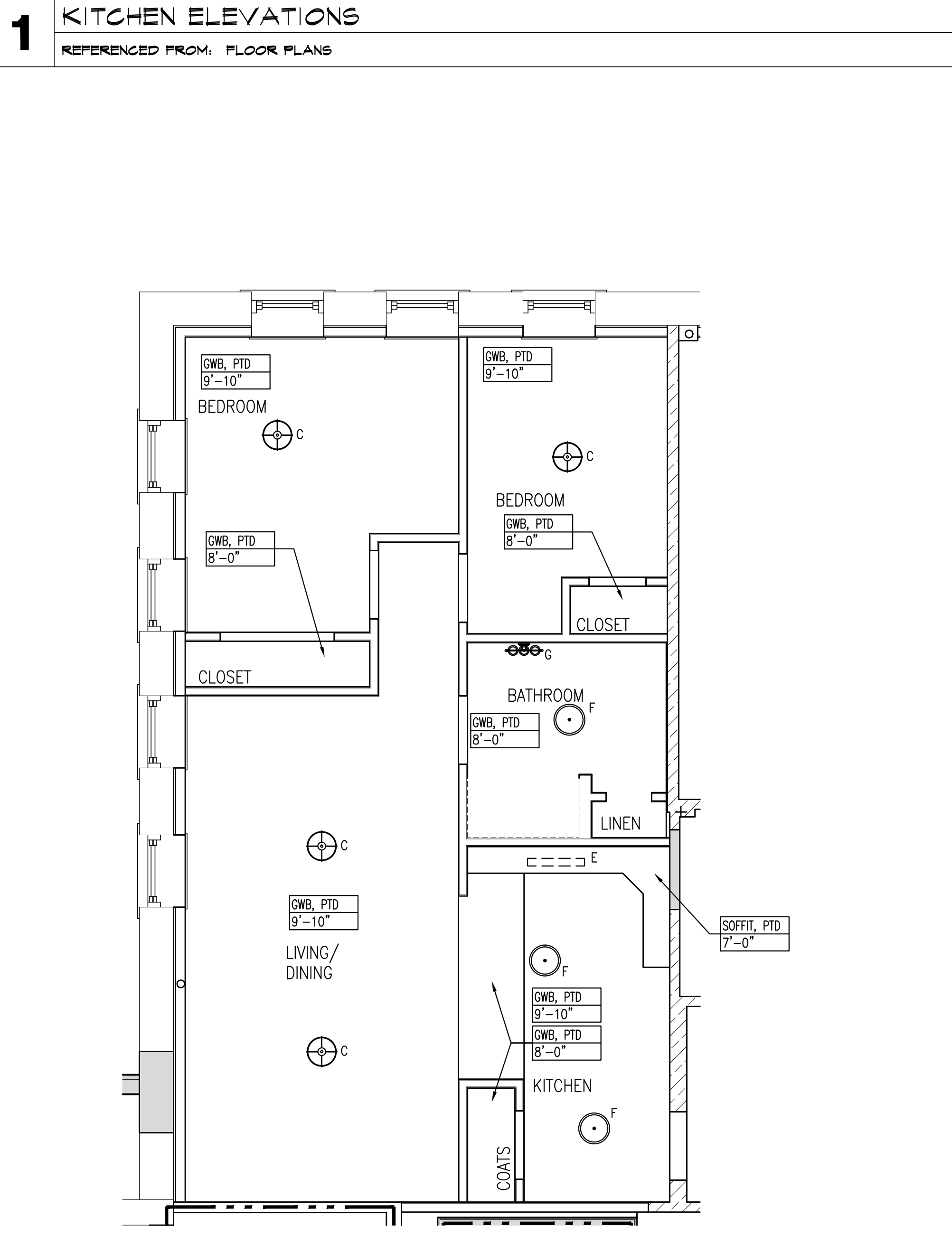
SCALE: 3/8" = 1'-0"

2 BATHROOM ELEVATIONS

REFERENCED FROM: FLOOR PLANS

SCALE: 3/8" = 1'-0"

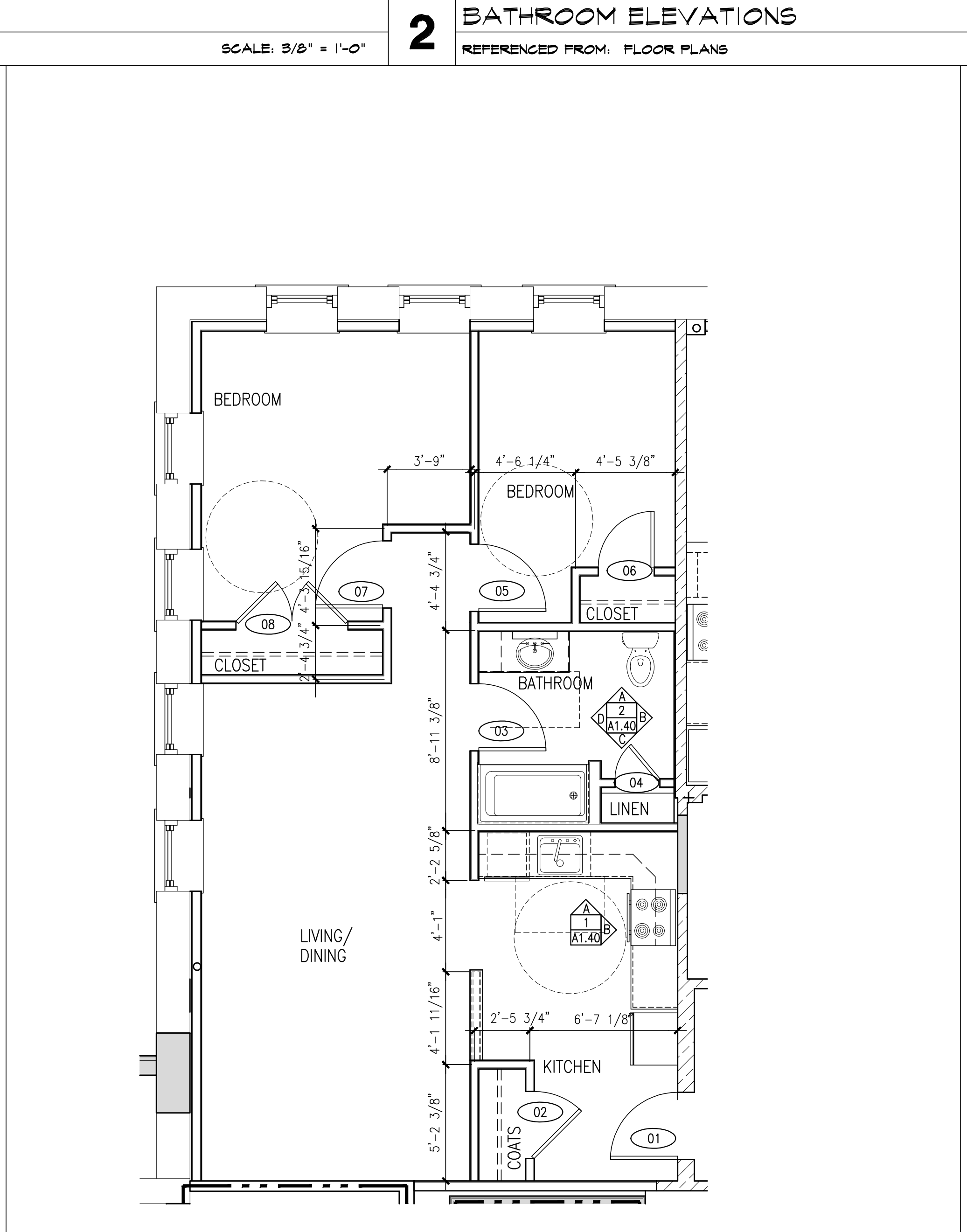
NOTE:
1. REFER TO A9.32 FOR TRANSITION DETAILS (TR).
2. ROOM DIMENSIONS AND SQUARE FOOTAGES ARE INFORMATIONAL ONLY AND SHALL NOT BE USED FOR CONSTRUCTION PURPOSES.
3. ROOM DIMENSIONS ARE FROM FACE OF FINISH WALL TO FACE OF FINISHED WALL.



A UNIT TYPE 2B-4 - REFLECTED CEILING PLAN

REFERENCED FROM: UNIT 308

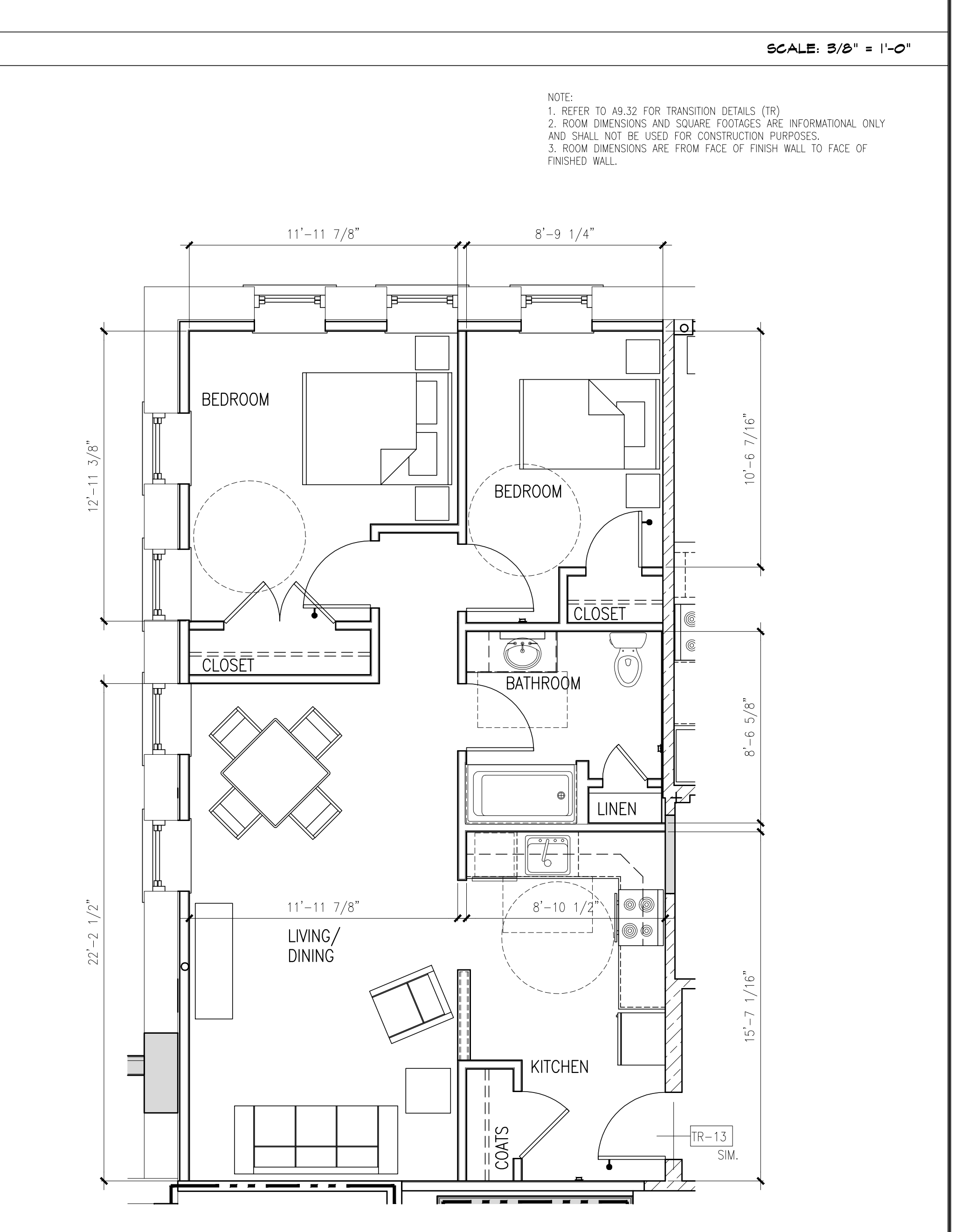
SCALE: 1/4" = 1'-0"



B UNIT TYPE 2B-4 - DIMENSIONAL PLAN

REFERENCED FROM: UNIT 308

SCALE: 1/4" = 1'-0"



C UNIT TYPE 2B-4 - LAYOUT FLOOR PLAN

REFERENCED FROM: UNIT 308

SCALE: 1/4" = 1'-0"

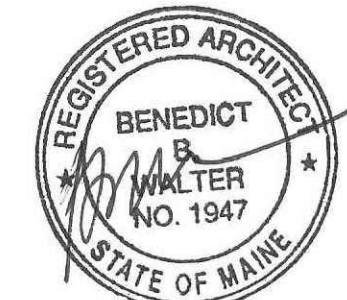


CWS Architects

Architecture
Space Planning
Value Design

434 Cumberland Avenue
Portland, ME 04101
Phone: (207)774-4441
Fax: (207)774-4016

www.CWSarch.com



Owner:

**Children's
Hospital Housing
Partners, LP**

309 Cumberland Ave.
Suite 203
Portland, Maine 04101

CONSTRUCTION MANAGER:

**WRIGHT-RYAN
CONSTRUCTION**

10 DANFORTH STREET
PORTLAND, ME 04101
TEL: (201) 773-3625

**ELM
TERRACE**

68 HIGH STREET
PORTLAND, MAINE

Project No: 09428

Drawing Title:

**TYPE 2B-4 FLOOR
PLANS, RCP, INT.
ELEVS**

Scale: AS NOTED

Date: ISSUED SEPTEMBER 8, 2011

Revisions:

- △ MAINE HOUSING CONCEPT SUBMISSION 02-01-2011
- △ HISTORIC PRESERVATION SUBMISSION 03-23-2011
- △ 50% MAINEHOUSING REVIEW 04-01-2011
- △ 90% MAINEHOUSING REVIEW 06-03-2011
- △ NPS SUBMISSION 07-01-2011
- △ ISSUED SEPTEMBER 8, 2011

Drawing Number:

A1.40

9/7/2011 2:33 PM