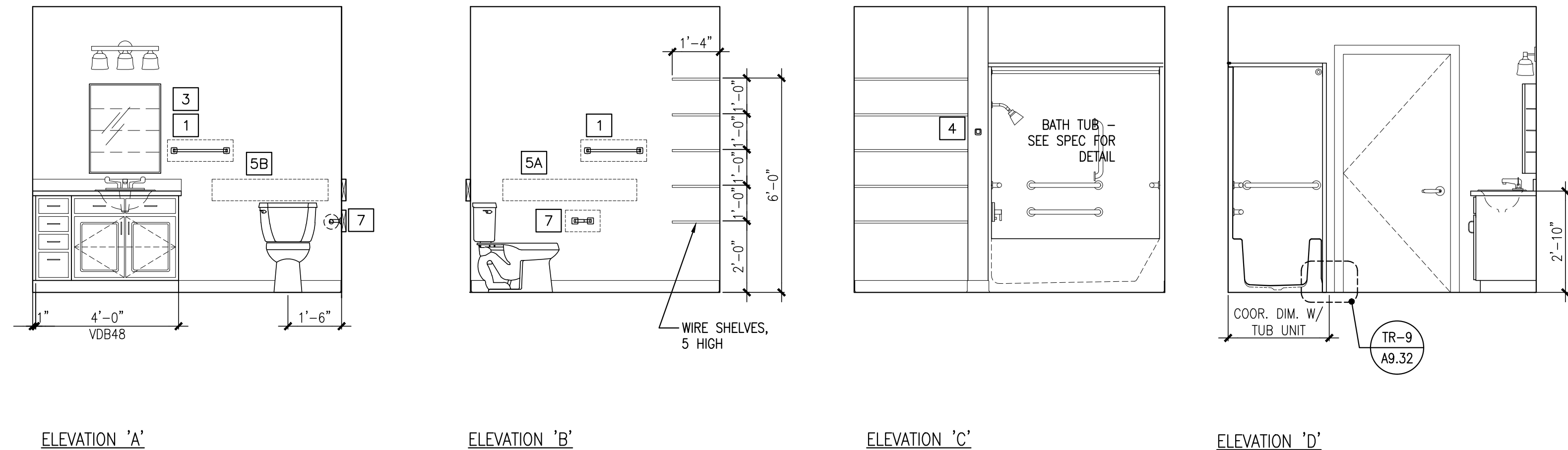
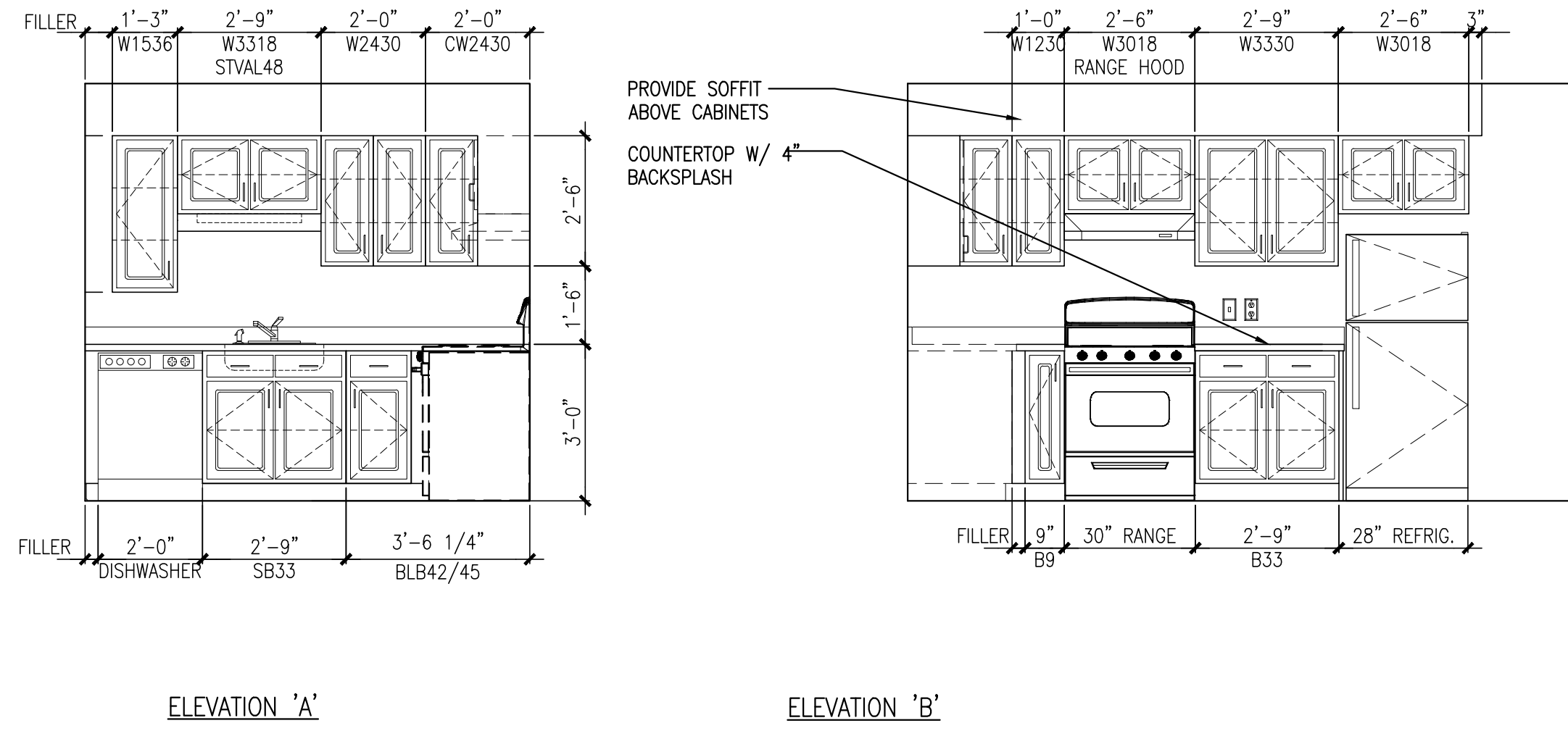


NOTES:
1. VERIFY OVERALL KITCHEN DIMENSIONS PRIOR TO PREPARING SHOP DRAWINGS.

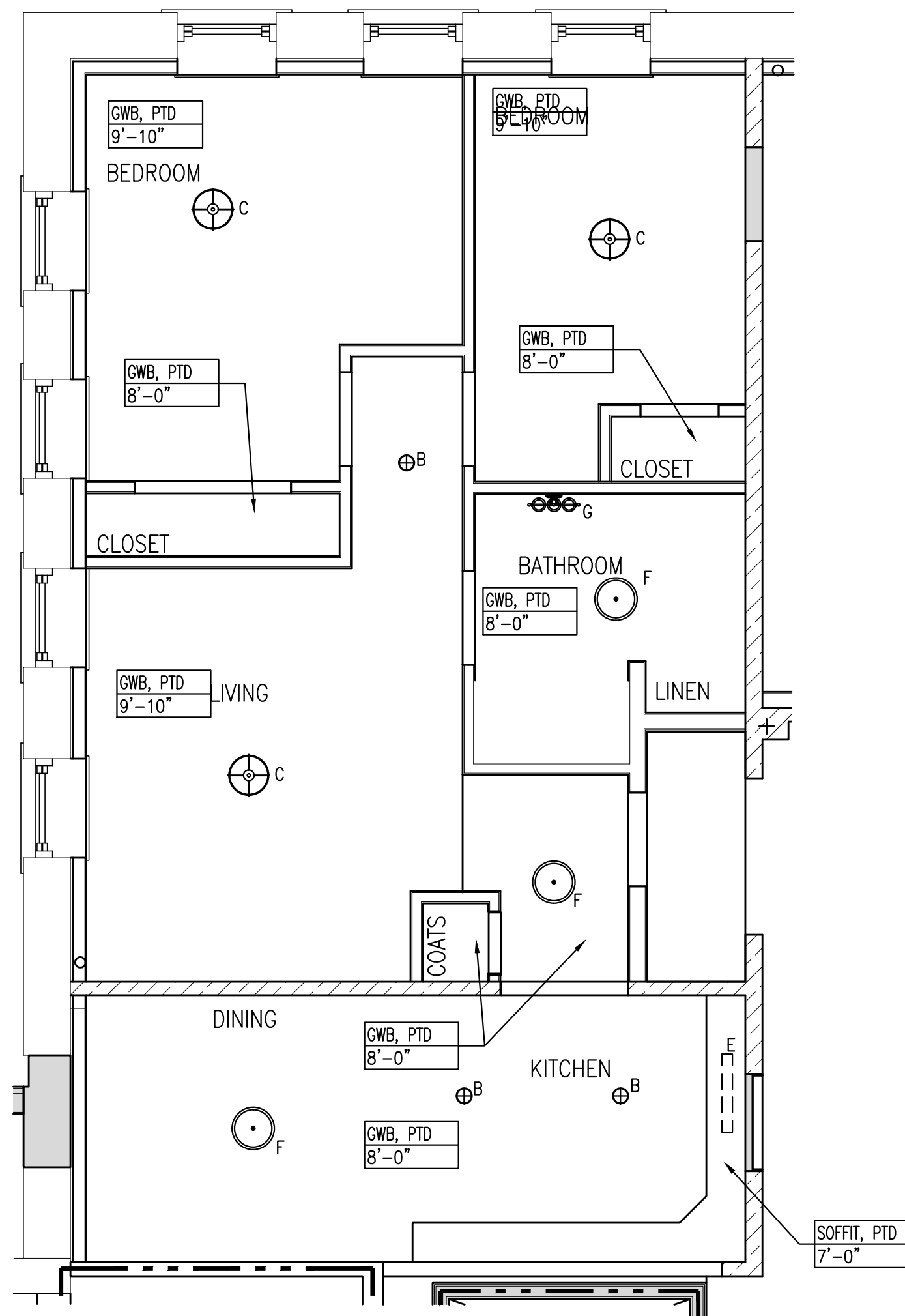


1 KITCHEN ELEVATIONS
REFERENCED FROM: FLOOR PLANS

SCALE: 3/8" = 1'-0"

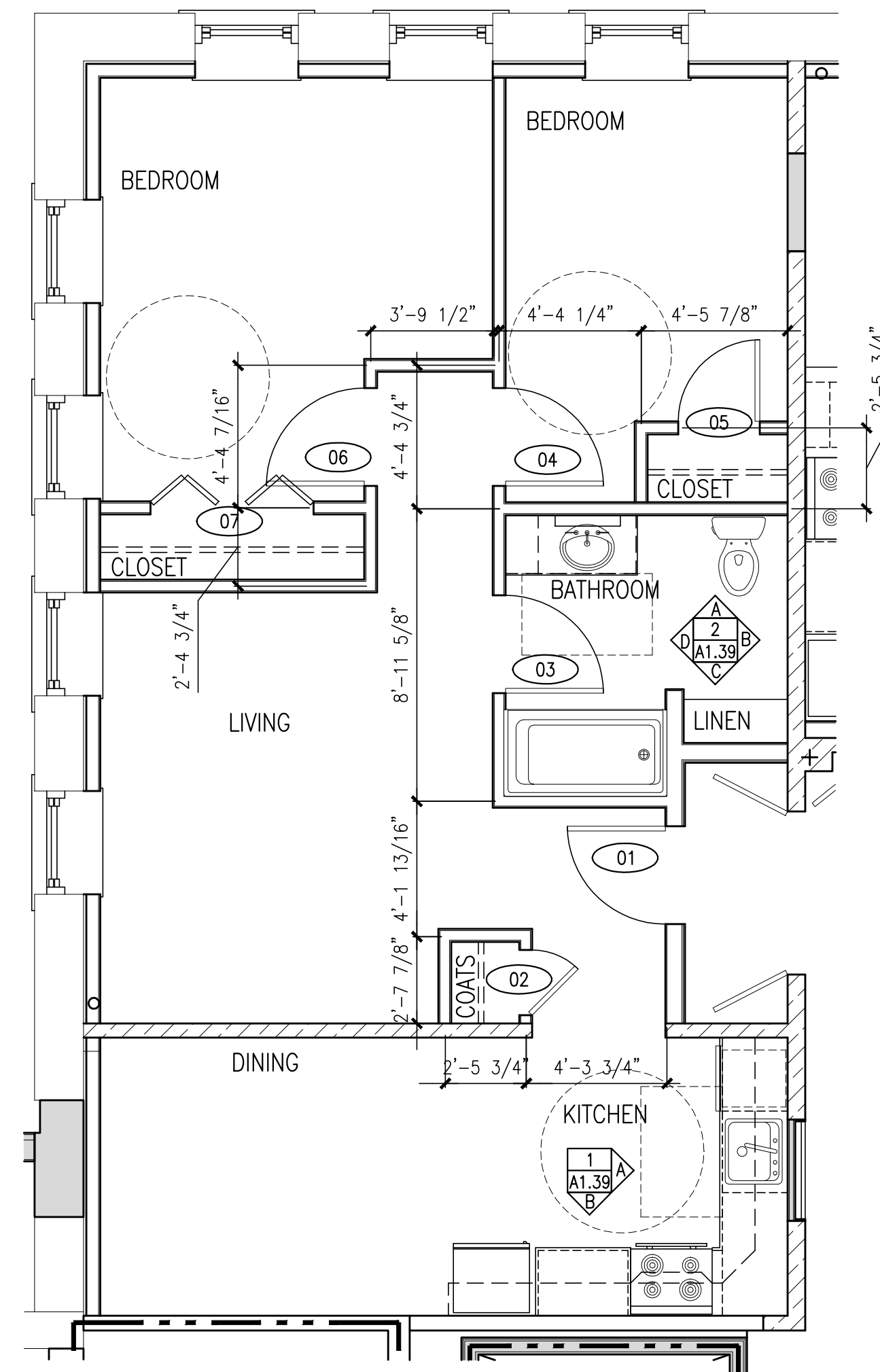
2 BATHROOM ELEVATIONS
REFERENCED FROM: FLOOR PLANS

SCALE: 3/8" = 1'-0"



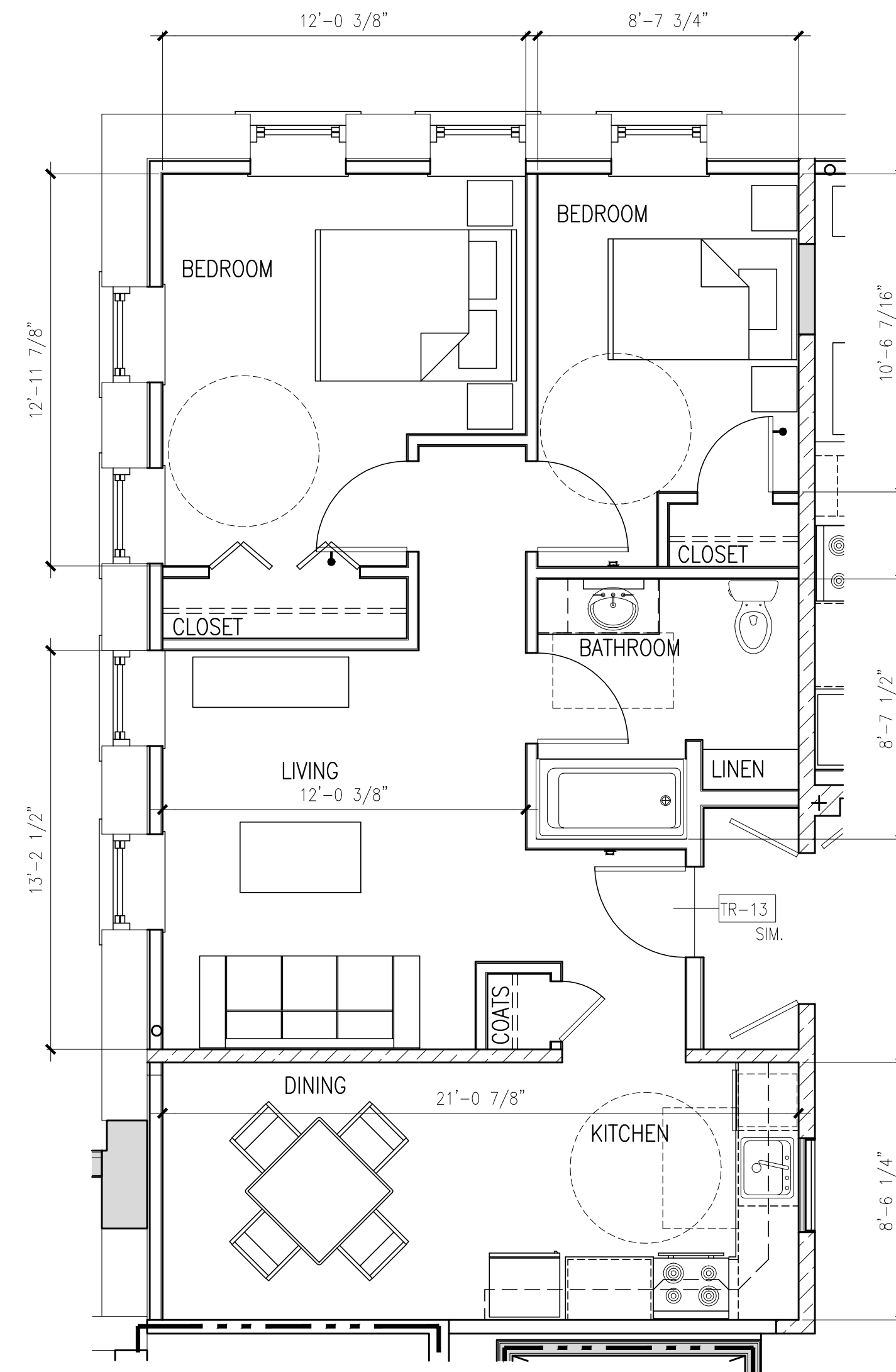
A UNIT TYPE 2B-3 - REFLECTED CEILING PLAN
REFERENCED FROM: UNIT 208

SCALE: 1/4" = 1'-0"



B UNIT TYPE 2B-3 - DIMENSIONAL PLAN
REFERENCED FROM: UNIT 208

SCALE: 1/4" = 1'-0"



C UNIT TYPE 2B-3 - LAYOUT FLOOR PLAN
REFERENCED FROM: UNIT 208

SCALE: 1/4" = 1'-0"

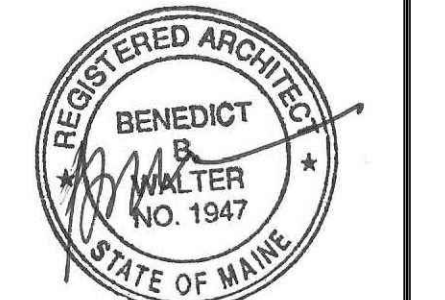


CWS Architects

Architecture
Space Planning
Value Design

434 Cumberland Avenue
Portland, ME 04101
Phone: (207)774-4441
Fax: (207)774-4016

www.CWSarch.com



Owner:

Children's
Hospital Housing
Partners, LP

309 Cumberland Ave.
Suite 203
Portland, Maine 04101

Construction Manager:

WRIGHT-RYAN
CONSTRUCTION
10 DANFORTH STREET
PORTLAND, ME 04101
TEL: (207) 773-3625

ELM
TERRACE

68 HIGH STREET
PORTLAND, MAINE

Project No: 09428

Drawing Title:

TYPE 2B-3 FLOOR
PLANS, RCP, INT.
ELEVS

Scale: AS NOTED

Date: ISSUED SEPTEMBER 8, 2011

Revisions:

- △ MAINE HOUSING CONCEPT SUBMISSION 02-01-2011
- △ HISTORIC PRESERVATION SUBMISSION 03-23-2011
- △ 50% MANHOUSING REVIEW 04-01-2011
- △ 90% MANHOUSING REVIEW 06-03-2011
- △ NPS SUBMISSION 07-01-2011
- △ ISSUED SEPTEMBER 8, 2011

Drawing Number:

A1.39