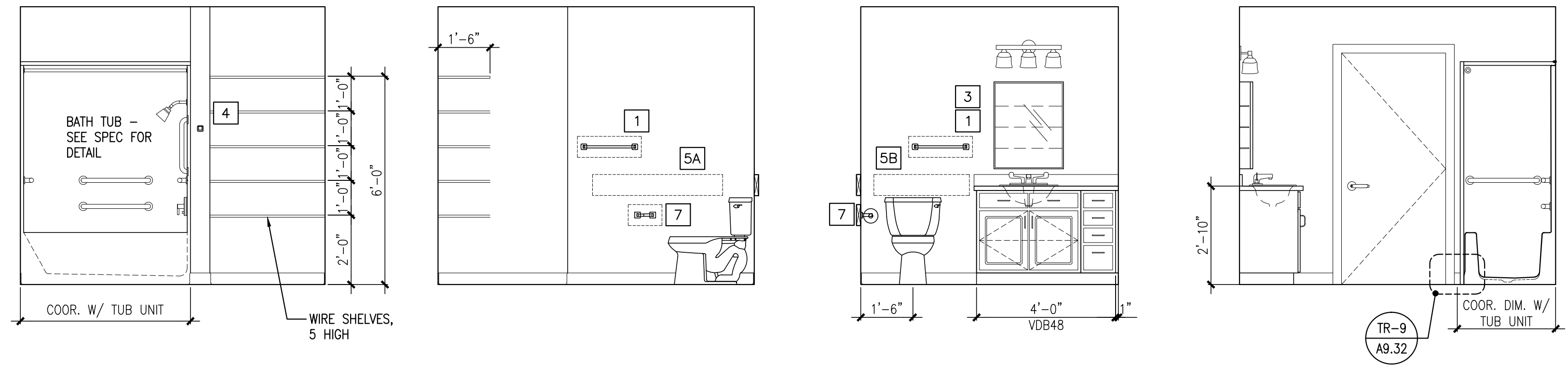
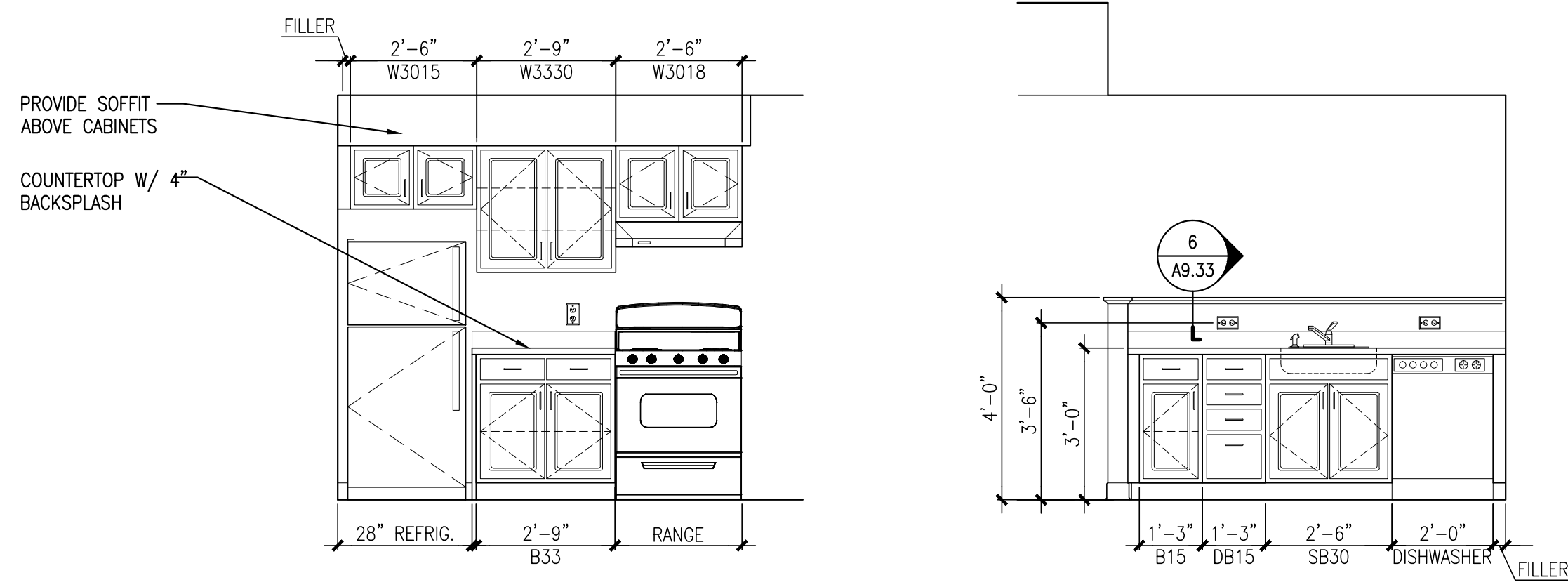


NOTES:  
1. VERIFY OVERALL KITCHEN DIMENSIONS PRIOR TO PREPARING SHOP DRAWINGS.



NOTE: REFER TO 3/A1.21 FOR BATHROOM ACCESSORY LEGEND AND NOTES.

**1 KITCHEN ELEVATIONS**

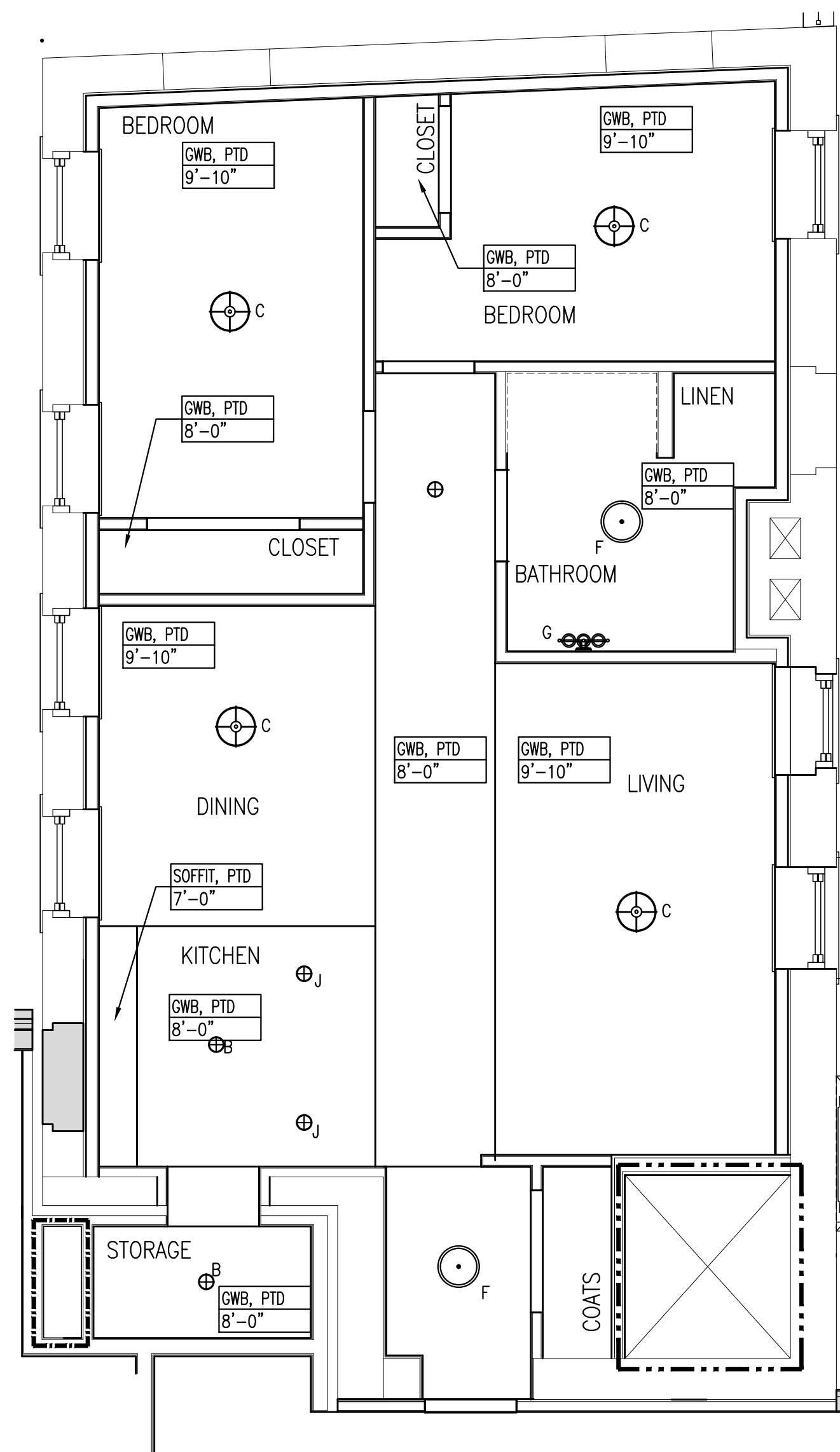
REFERENCED FROM: FLOOR PLANS

SCALE: 3/8" = 1'-0"

**2 BATHROOM ELEVATIONS**

REFERENCED FROM: FLOOR PLANS

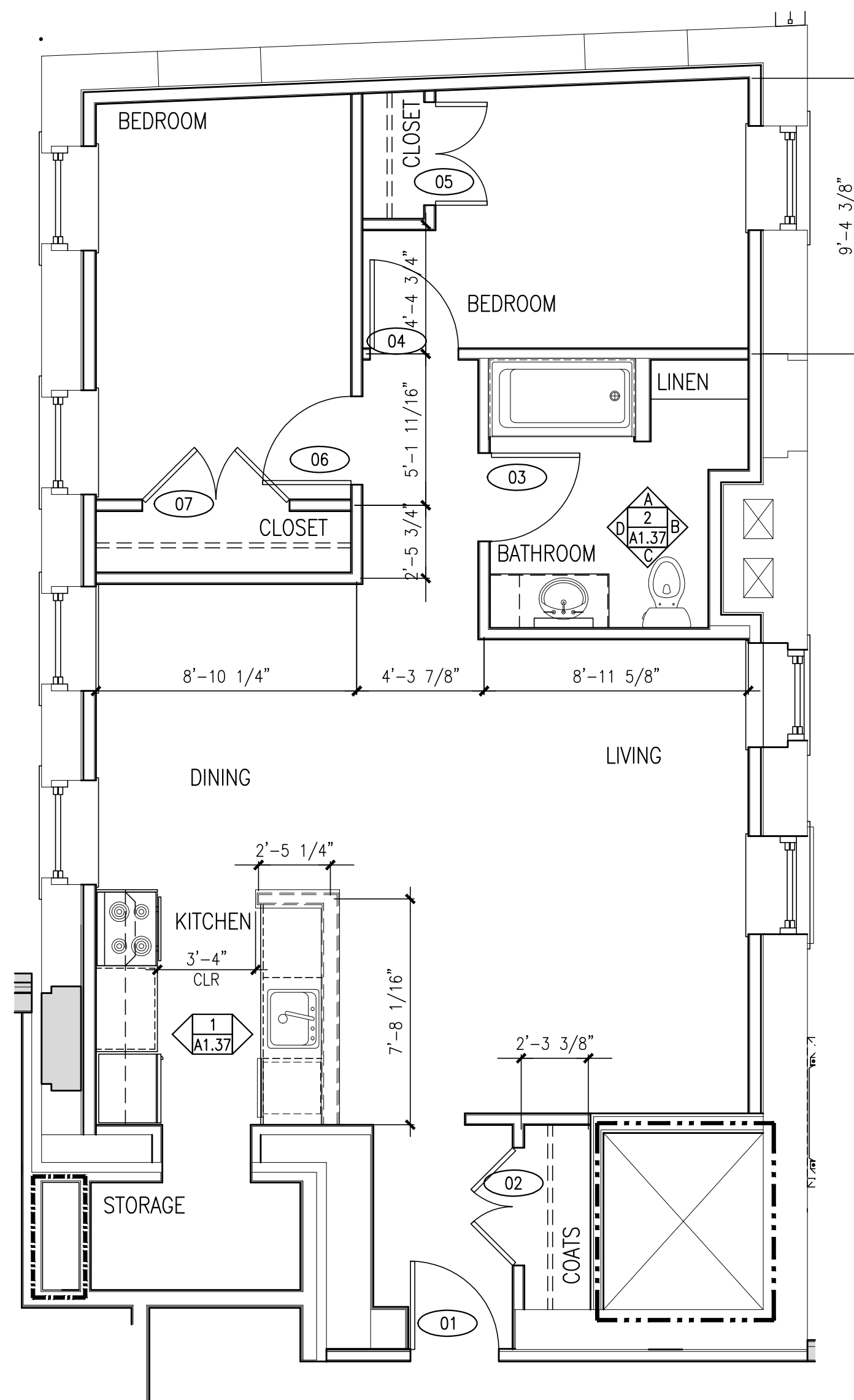
SCALE: 3/8" = 1'-0"



**A UNIT TYPE 2B-1 - REFLECTED CEILING PLAN**

REFERENCED FROM: UNIT 106, 206, 306

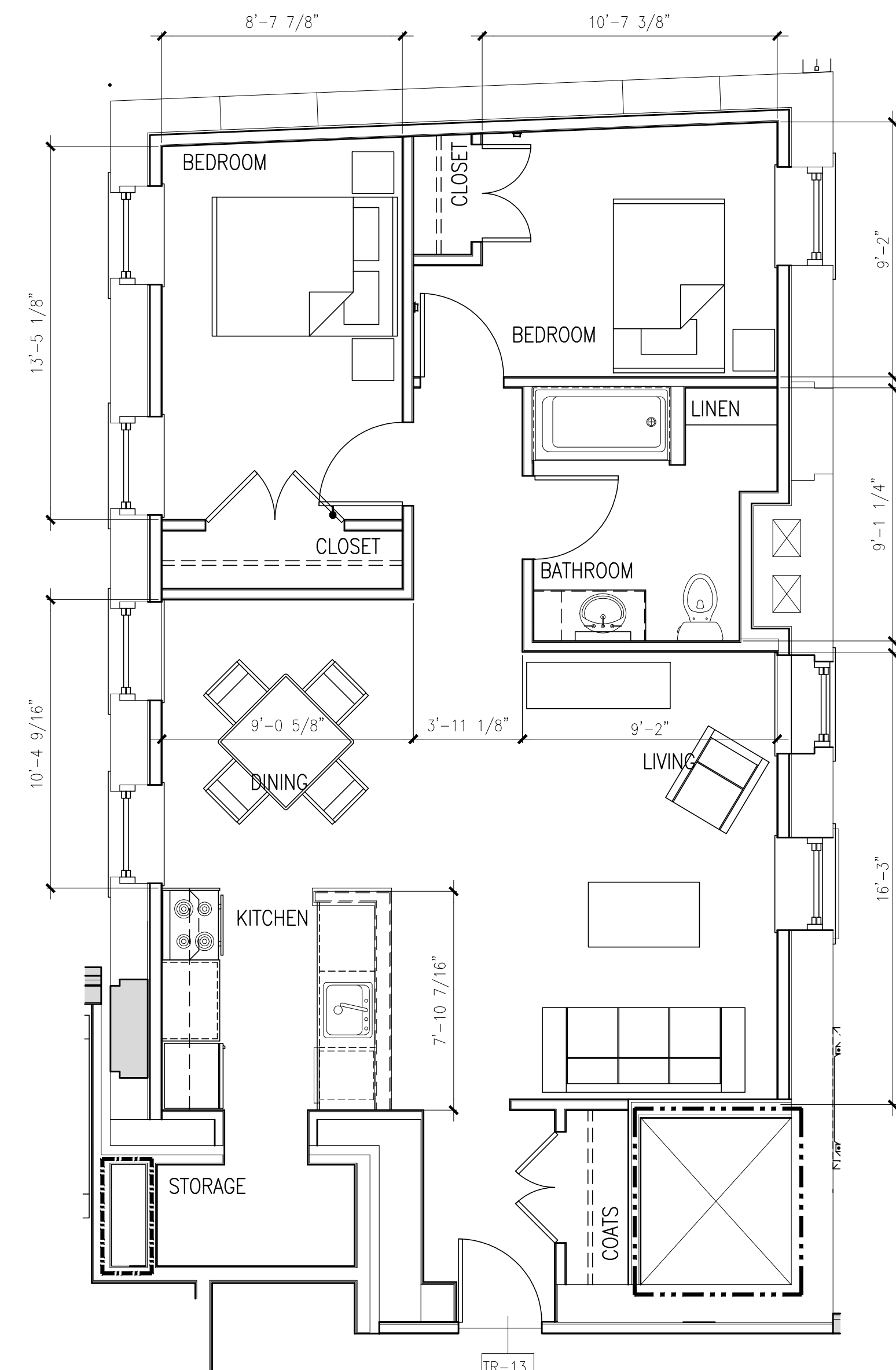
SCALE: 1/4" = 1'-0"



**B UNIT TYPE 2B-1 - DIMENSIONAL PLAN**

REFERENCED FROM: UNIT 106, 206, 306

SCALE: 1/4" = 1'-0"



**C UNIT TYPE 2B-1 - LAYOUT FLOOR PLAN**

REFERENCED FROM: UNIT 106, 206, 306

SCALE: 1/4" = 1'-0"

NOTE:  
1. REFER TO A9.32 FOR TRANSITION DETAILS (TR)  
2. ROOM DIMENSIONS AND SQUARE FOOTAGES ARE INFORMATIONAL ONLY AND SHALL NOT BE USED FOR CONSTRUCTION PURPOSES.  
3. ROOM DIMENSIONS ARE FROM FACE OF FINISH WALL TO FACE OF FINISHED WALL.

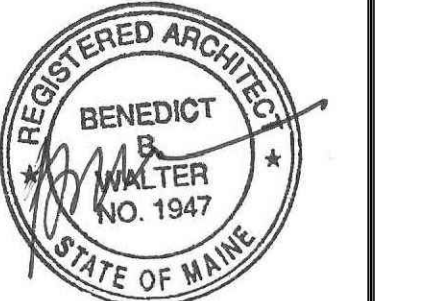


CWS Architects

Architecture  
Space Planning  
Value Design

434 Cumberland Avenue  
Portland, ME 04101  
Phone: (207)774-4441  
Fax: (207)774-4016

www.CWSarch.com



Owner:

**Children's  
Hospital Housing  
Partners, LP**

309 Cumberland Ave.  
Suite 203  
Portland, Maine 04101

CONSTRUCTION MANAGER:

**WRIGHT-RYAN  
CONSTRUCTION**

10 DANFORTH STREET  
PORTLAND, ME 04101  
TEL: (207) 773-3625

**ELM  
TERRACE**

68 HIGH STREET  
PORTLAND, MAINE

Project No: 09428

Drawing Title:

**TYPE 2B-1 FLOOR  
PLANS, RCP, INT.  
ELEVS**

Scale: AS NOTED

Date: ISSUED SEPTEMBER 8, 2011

Revisions:

- △ MAINE HOUSING CONCEPT SUBMISSION 02-01-2011
- △ HISTORIC PRESERVATION SUBMISSION 03-23-2011
- △ 50% MAINEHOUSING REVIEW 04-01-2011
- △ 90% MAINEHOUSING REVIEW 06-03-2011
- △ NPS SUBMISSION 07-01-2011
- △ ISSUED SEPTEMBER 8, 2011

Drawing Number:

**A1.37**

9/7/2011 2:29 PM