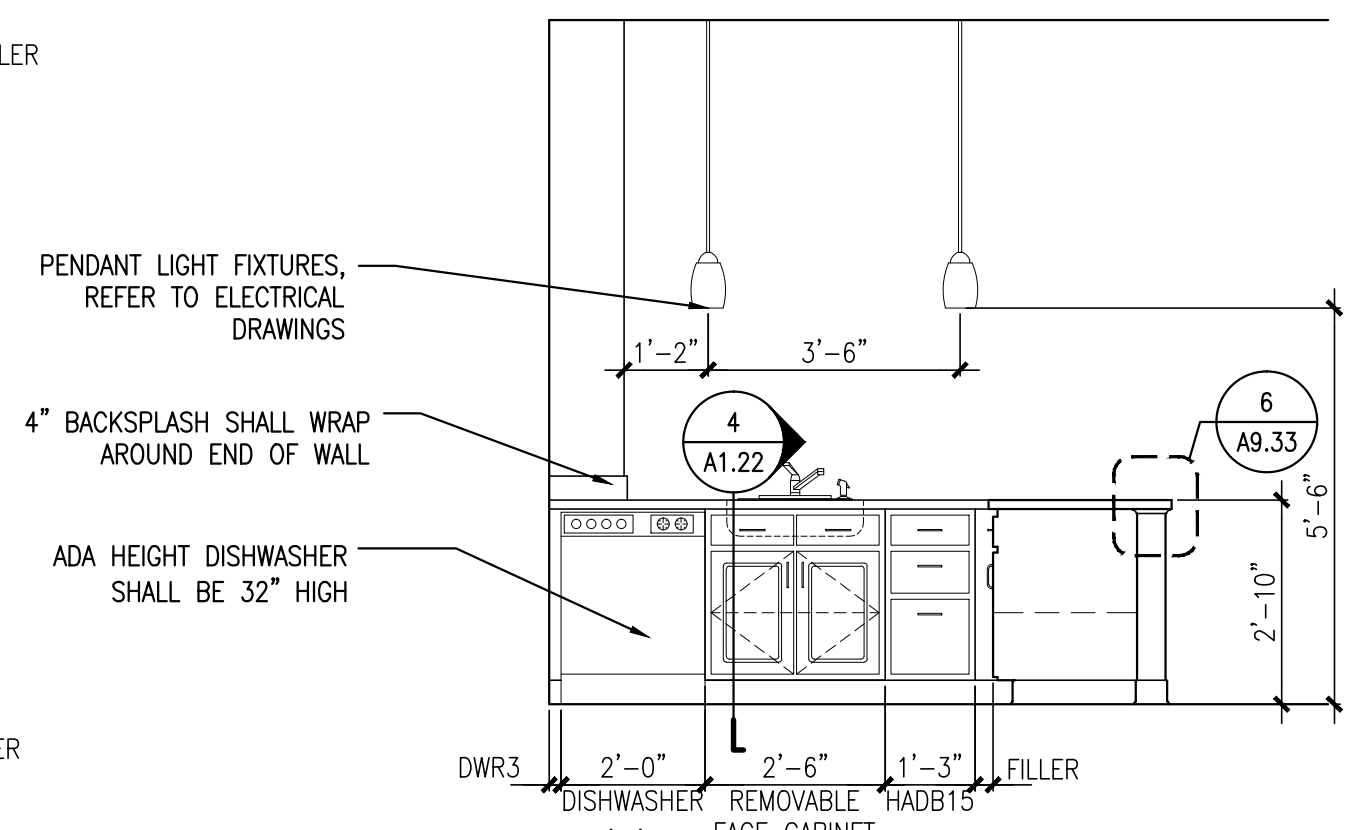
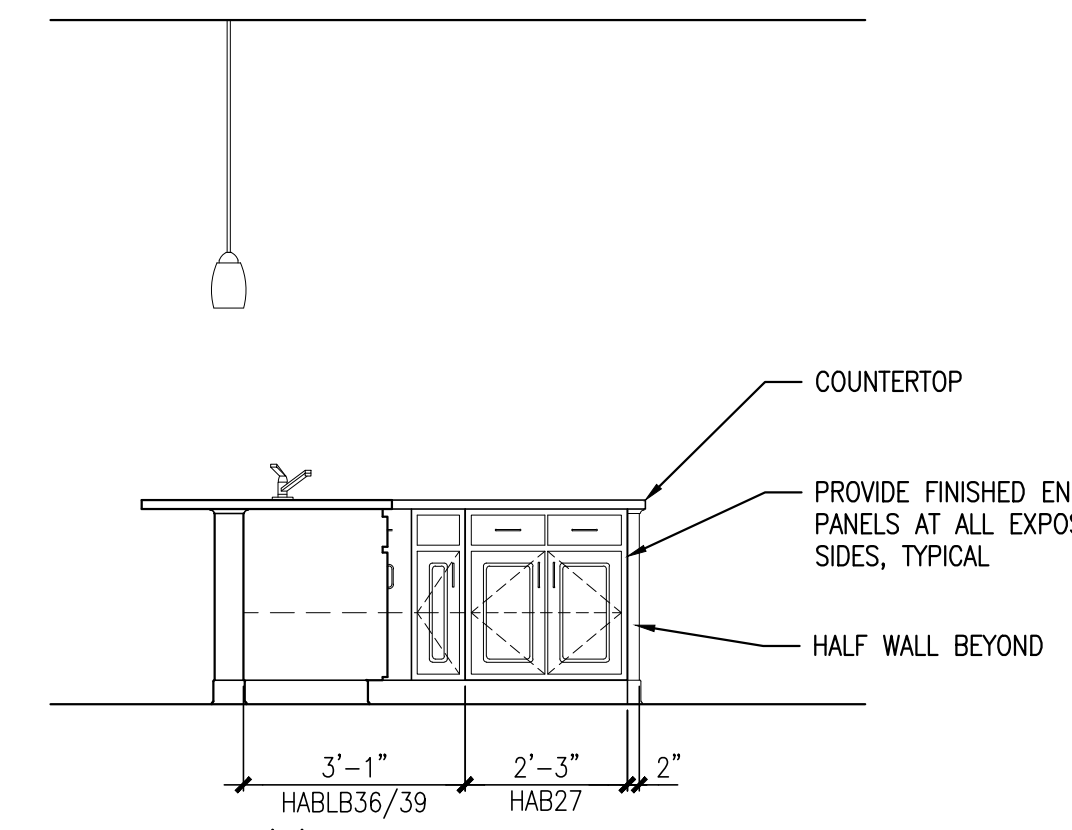


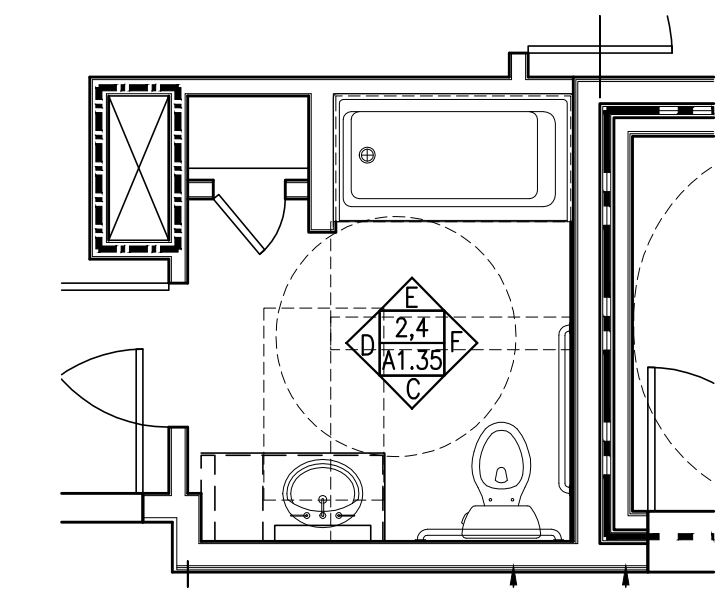
**ELEVATION 'A'**  
 NOTES:  
 1. VERIFY OVERALL KITCHEN DIMENSIONS PRIOR TO PREPARING SHOP DRAWINGS.  
 2. PROVIDE FINISH FLOORING, WALL BASE AND FINISH WALL AT ALL REMOVABLE CABINETS.



**ELEVATION 'B'**



**ELEVATION 'C'**



**3 BATHROOM PLAN @ UNIT 302**

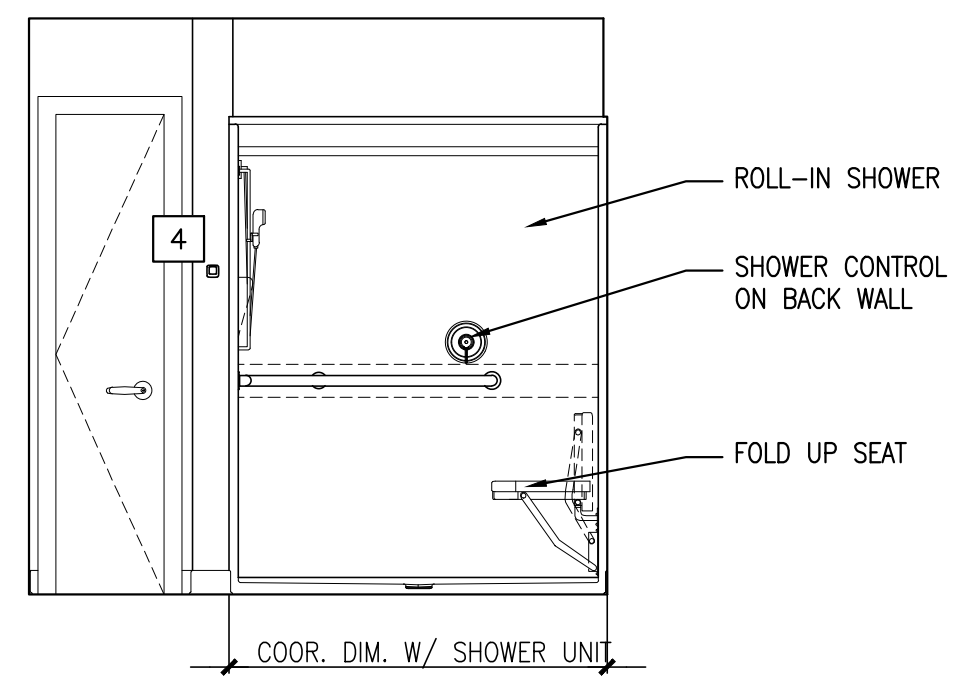
REFERENCED FROM: SIMILAR TO UNIT 202

**1 KITCHEN ELEVATIONS**

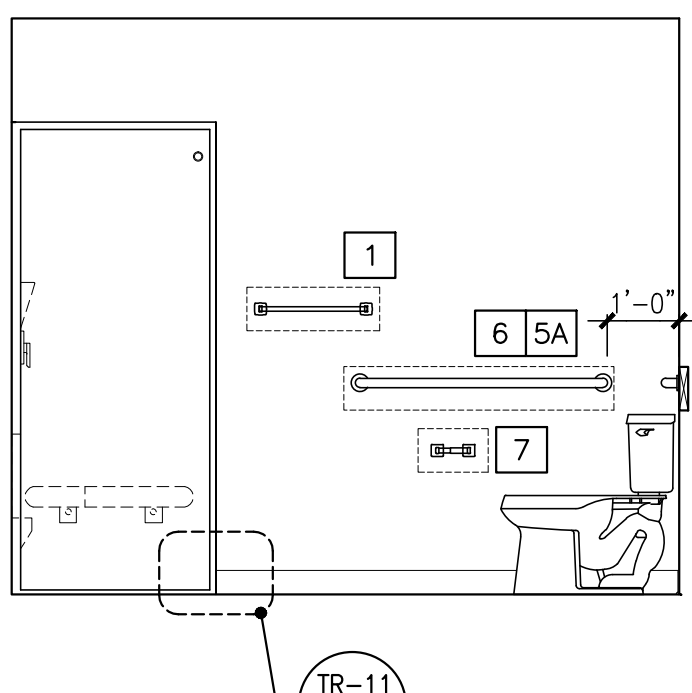
REFERENCED FROM: FLOOR PLANS

SCALE: 3/8" = 1'-0"

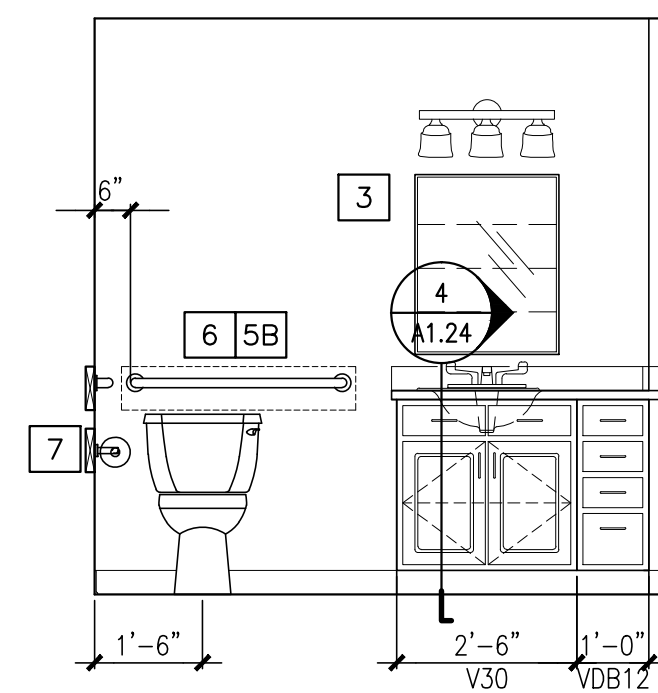
NOTE: REFER TO 3/A1.21 FOR BATHROOM ACCESSORY LEGEND AND NOTES.



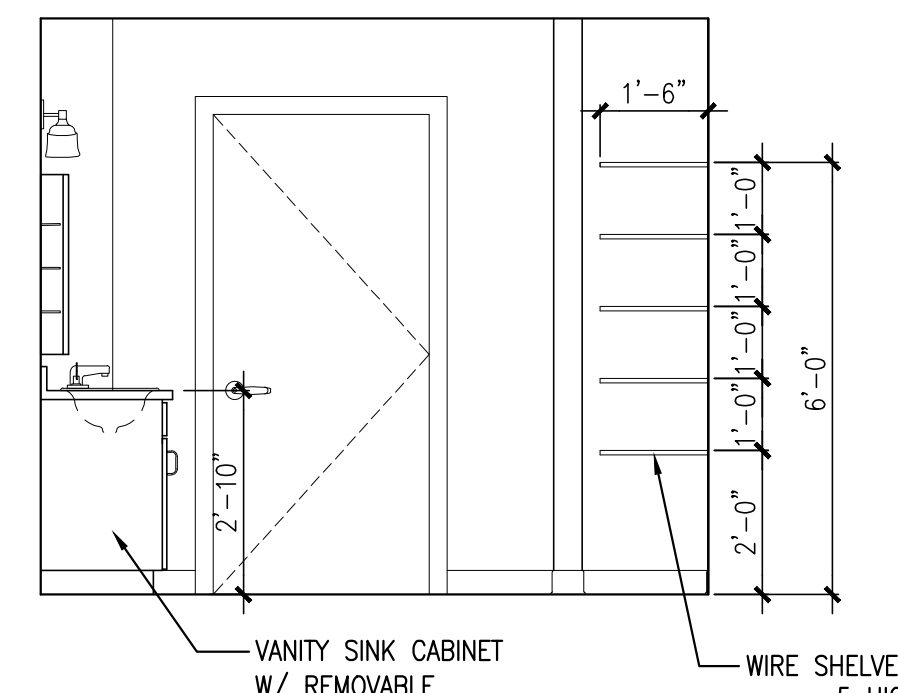
**ELEVATION 'A'**



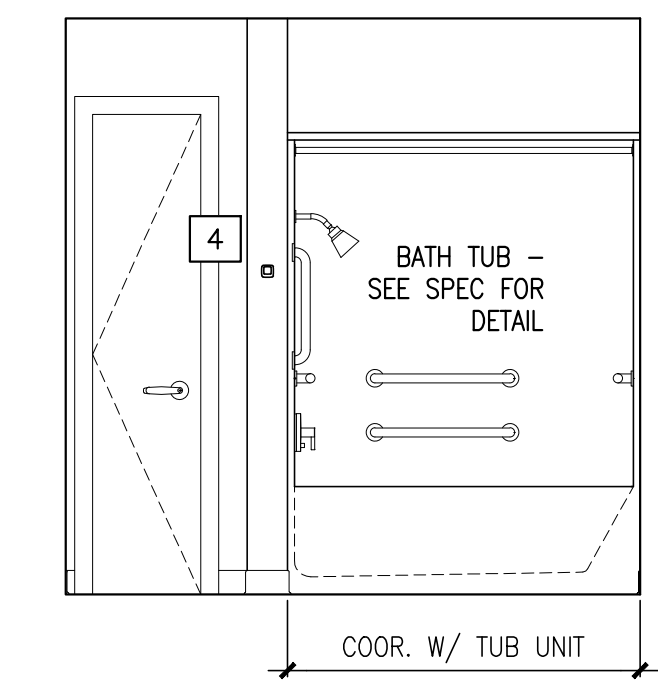
**ELEVATION 'B'**



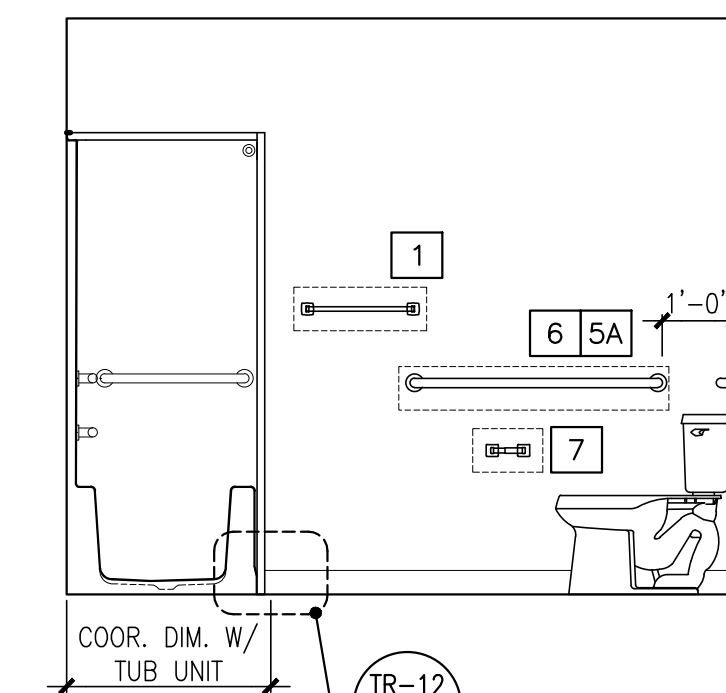
**ELEVATION 'C'**



**ELEVATION 'D'**



**ELEVATION 'E'**



**ELEVATION 'F'**

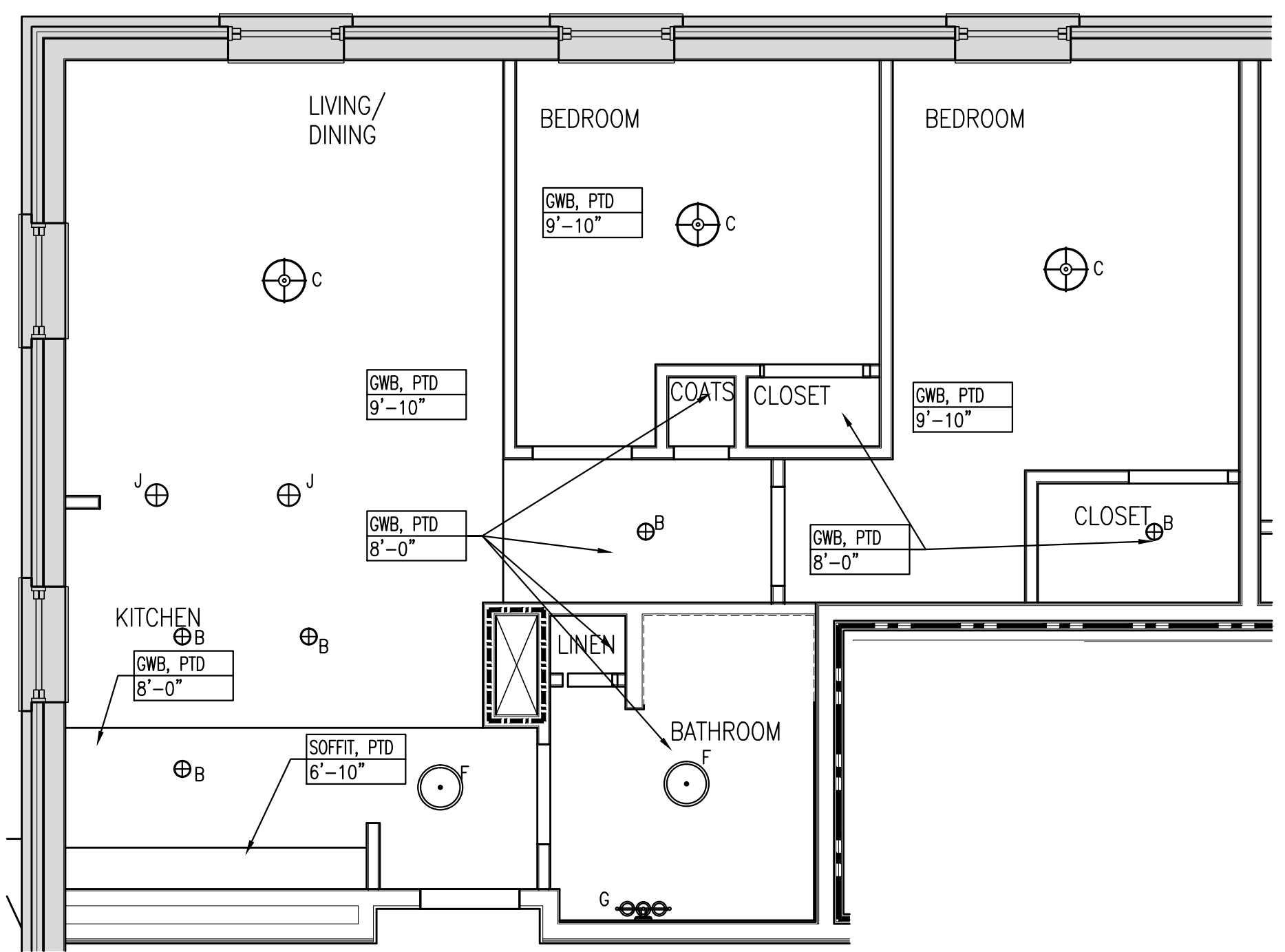
**2 BATHROOM ELEVATIONS**

REFERENCED FROM: FLOOR PLANS

SCALE: 3/8" = 1'-0"

**4 BATHROOM ELEVATION @ UNIT 302**

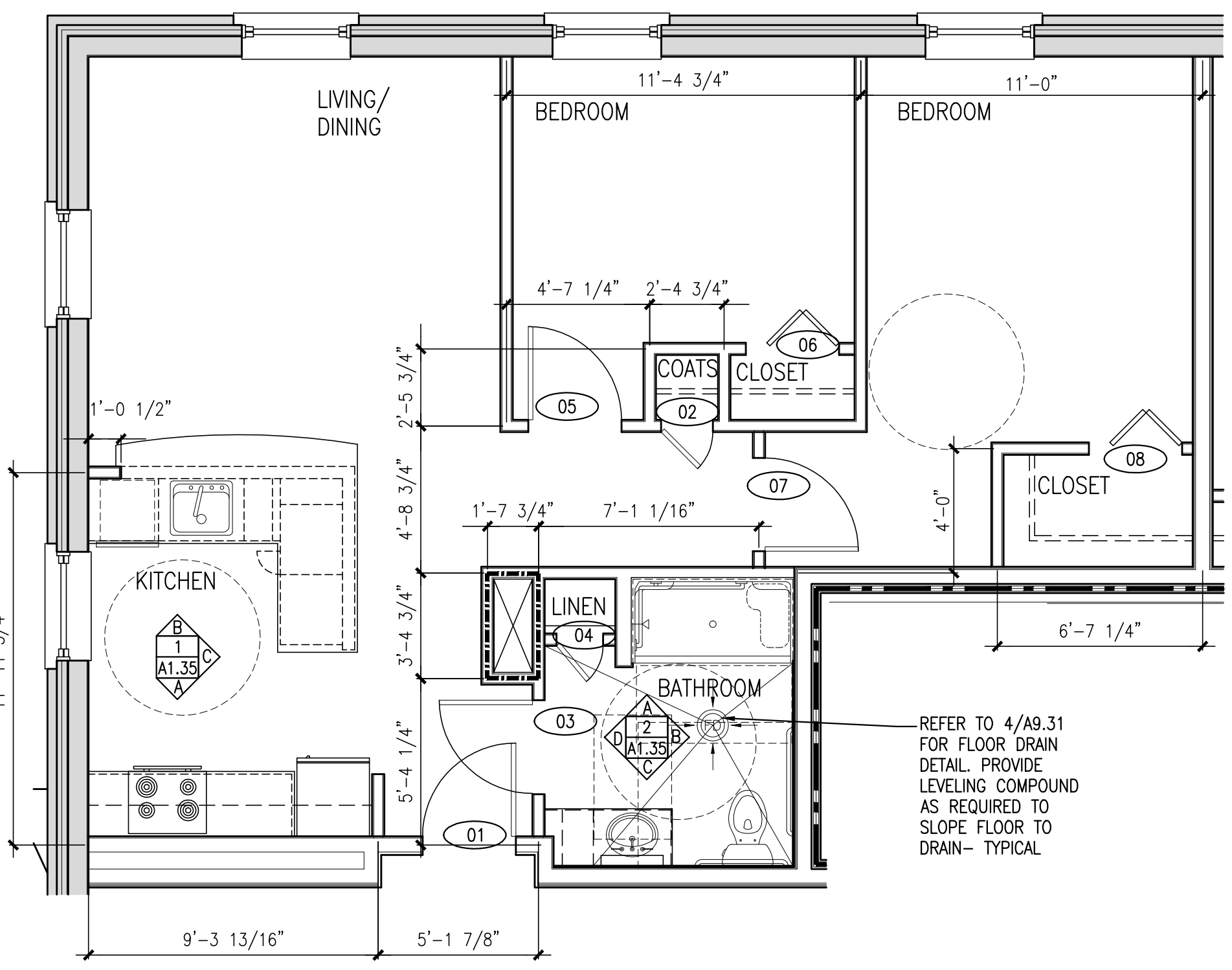
REFERENCED FROM: FLOOR PLANS



**A UNIT TYPE 2A-1 - REFLECTED CEILING PLAN**

REFERENCED FROM: UNIT 202, (302 SIMILAR)

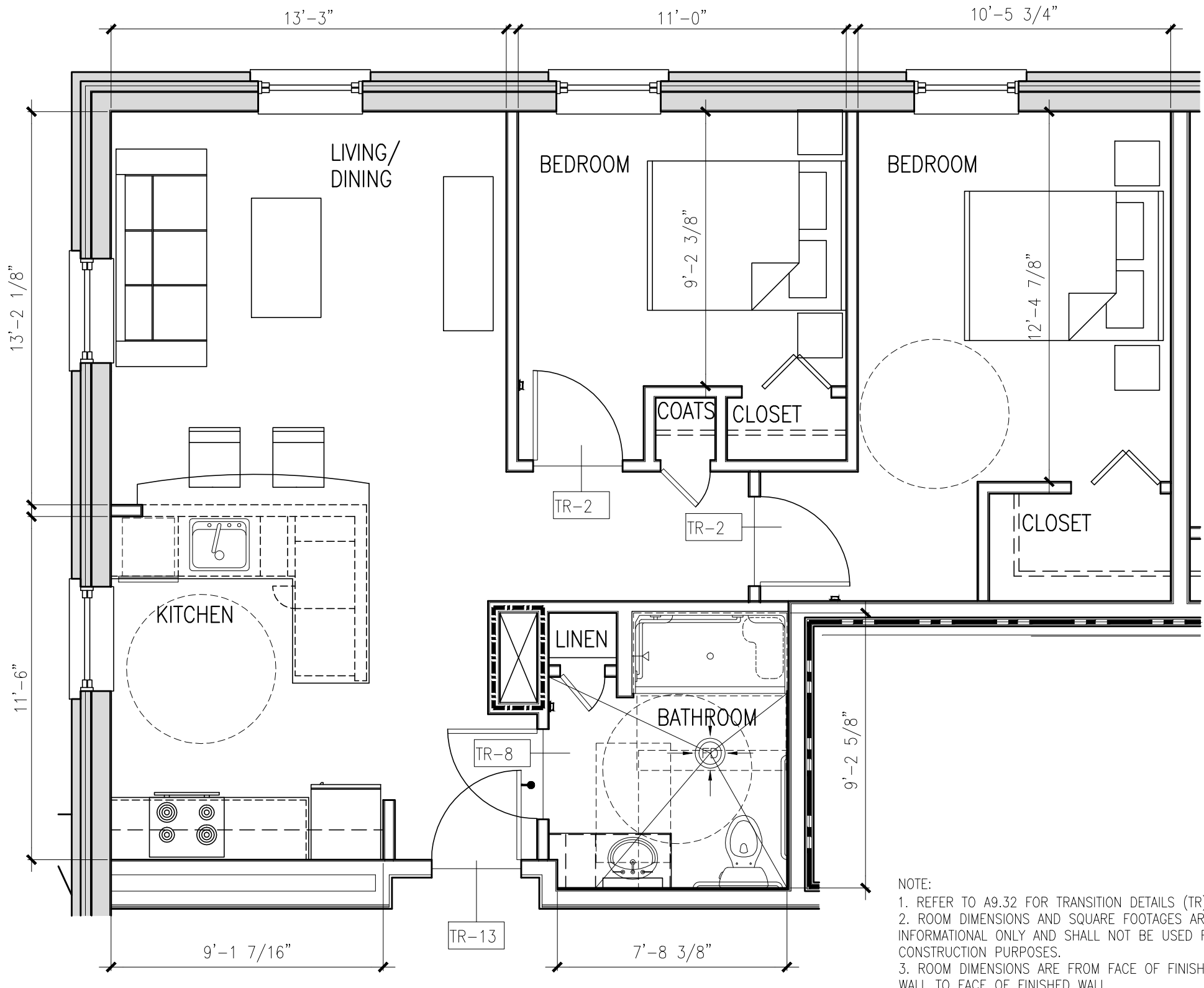
SCALE: 1/4" = 1'-0"



**B UNIT TYPE 2A-1 - DIMENSIONAL PLAN**

REFERENCED FROM: UNIT 202, (302 SIMILAR)

SCALE: 1/4" = 1'-0"



**C UNIT TYPE 2A-1 - LAYOUT FLOOR PLAN**

REFERENCED FROM: UNIT 202, (302 SIMILAR)

SCALE: 1/4" = 1'-0"

**CWS Architects**  
 Architecture  
 Space Planning  
 Value Design  
 434 Cumberland Avenue  
 Portland, ME 04101  
 Phone: (207)774-4441  
 Fax: (207)774-4016  
 www.CWSarch.com

REGISTERED ARCHITECT  
 BENEDICT W. WILKINSON  
 NO. 1947  
 STATE OF MAINE

Owner:  
**Children's Hospital Housing Partners, LP**  
 309 Cumberland Ave.  
 Suite 203  
 Portland, Maine 04101

CONSTRUCTION MANAGER:  
**WRIGHT-RYAN CONSTRUCTION**  
 10 DANFORTH STREET  
 PORTLAND, ME 04101  
 TEL: (201) 773-3625

**ELM TERRACE**  
 68 HIGH STREET  
 PORTLAND, MAINE

Project No: 09428  
 Drawing Title:  
**TYPE 2A-1 FLOOR PLANS, RCP, INT. ELEVS**  
 Scale: AS NOTED  
 Date: ISSUED SEPTEMBER 8, 2011  
 Revisions:  
 MAINE HOUSING CONCEPT SUBMISSION 02-01-2011  
 HISTORIC PRESERVATION SUBMISSION 03-23-2011  
 50% MANHOUSING REVIEW 04-01-2011  
 90% MANHOUSING REVIEW 06-03-2011  
 NPS SUBMISSION 07-01-2011  
 ISSUED SEPTEMBER 8, 2011

Drawing Number:  
**A1.35**