

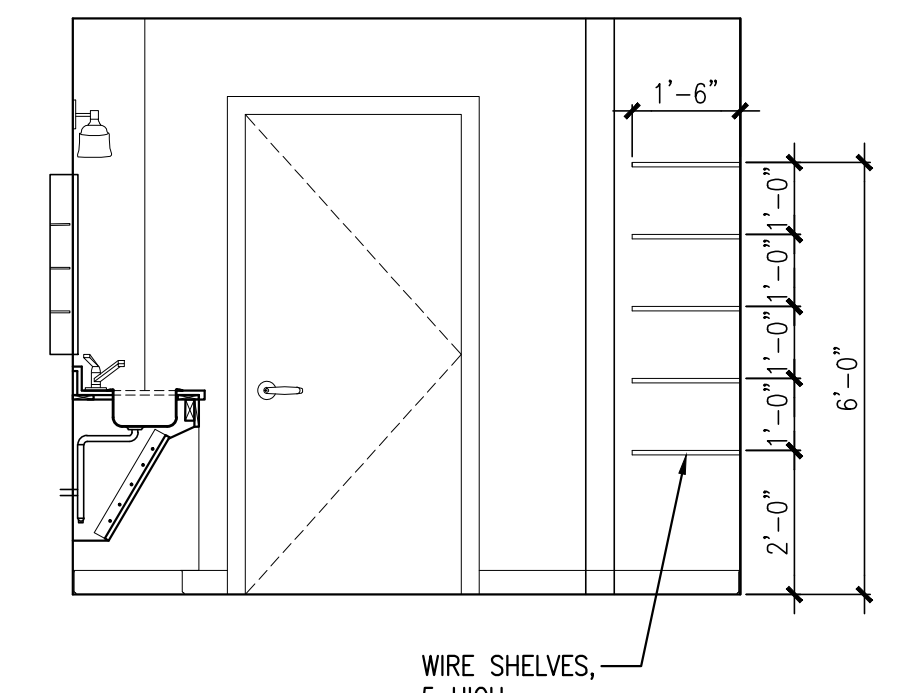
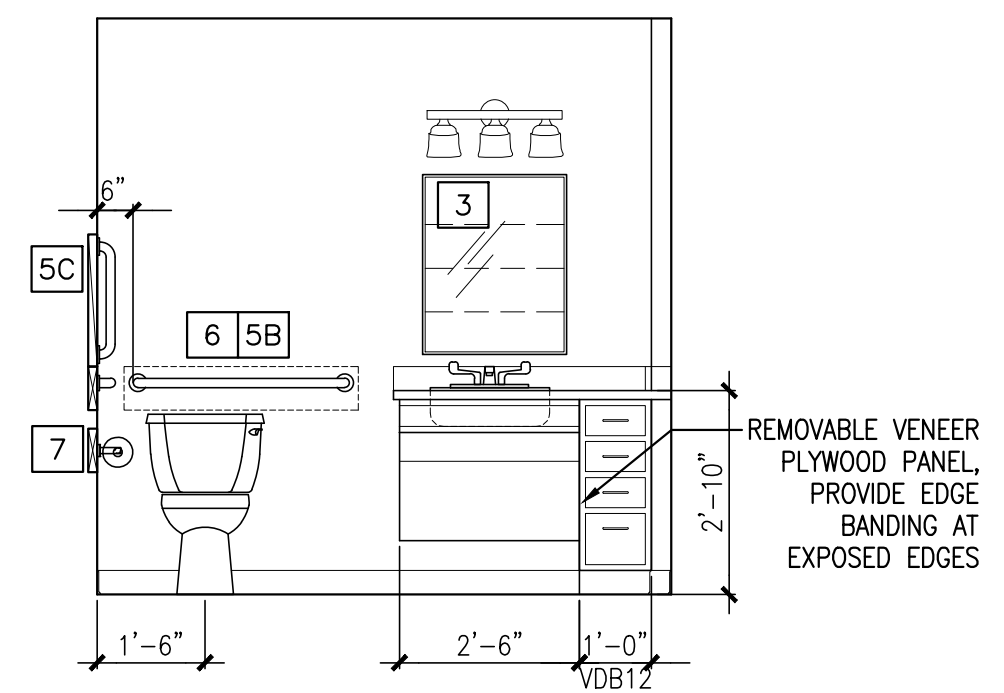
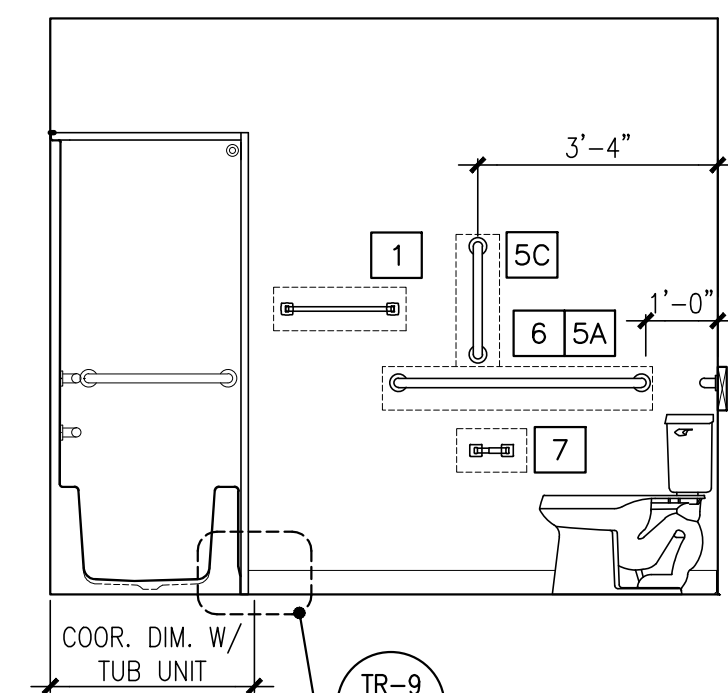
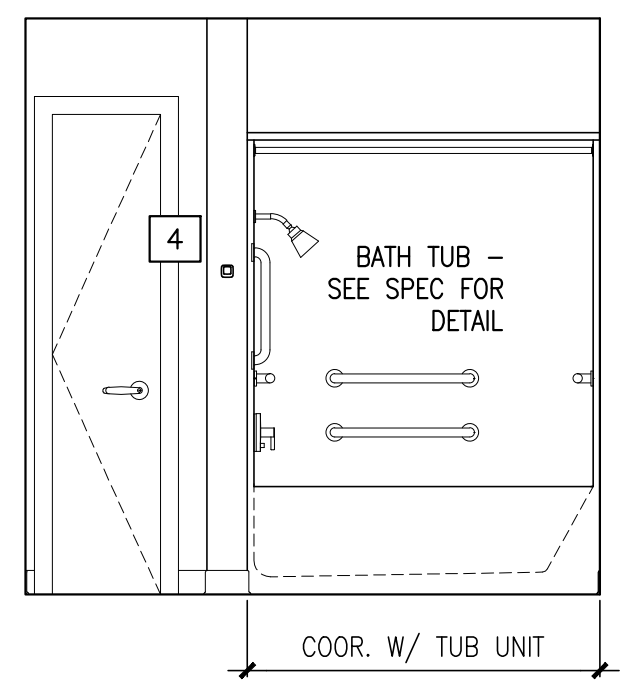
NOTES:
 1. VERIFY OVERALL KITCHEN DIMENSIONS PRIOR TO PREPARING SHOP DRAWINGS.
 2. PROVIDE FINISH FLOORING, WALL BASE AND FINISH WALL AT ALL REMOVABLE CABINETS.

1 KITCHEN ELEVATIONS

REFERENCED FROM: FLOOR PLANS

SCALE: 3/8" = 1'-0"

NOTE: REFER TO 3/A1.21 FOR BATHROOM ACCESSORY LEGEND AND NOTES.

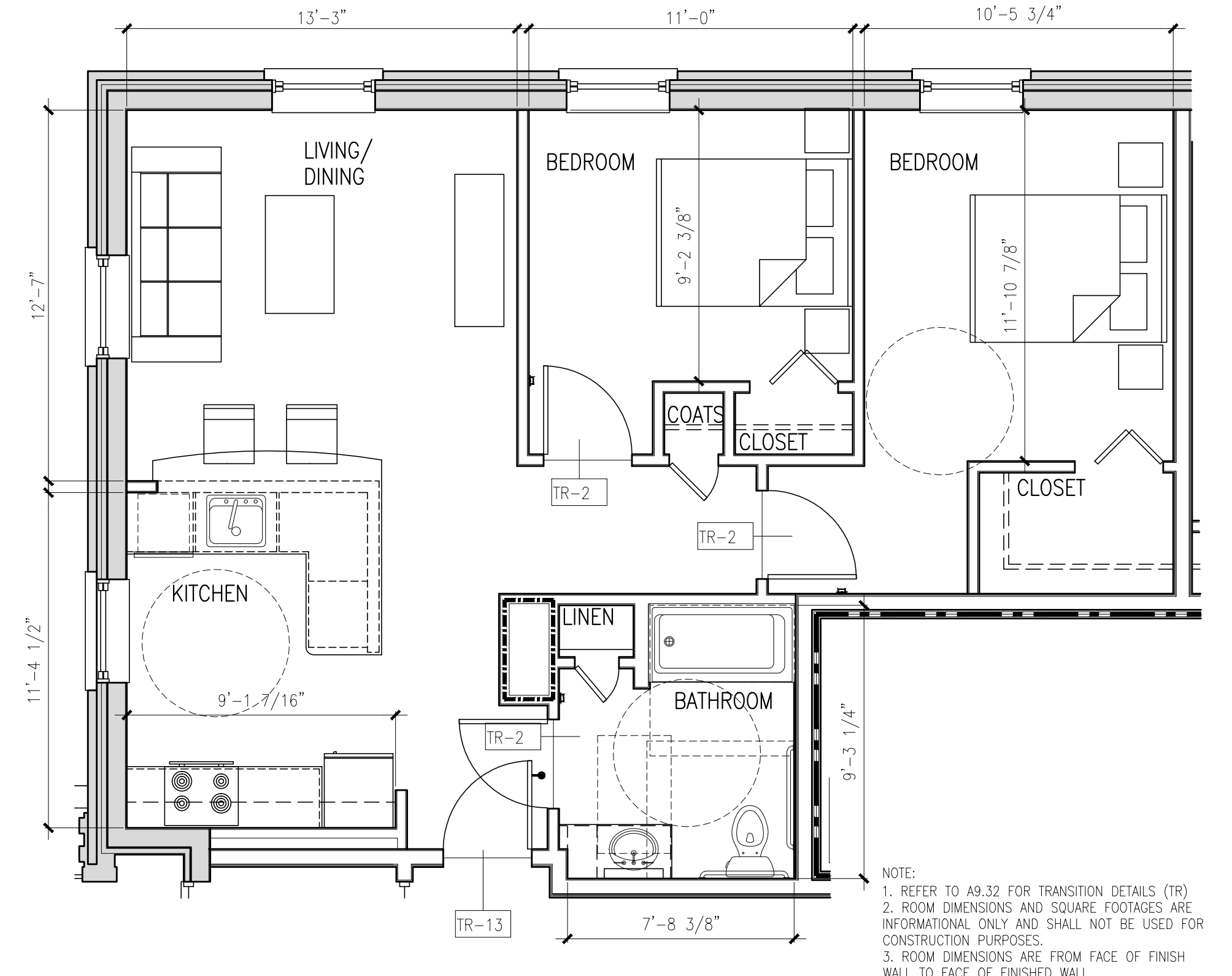
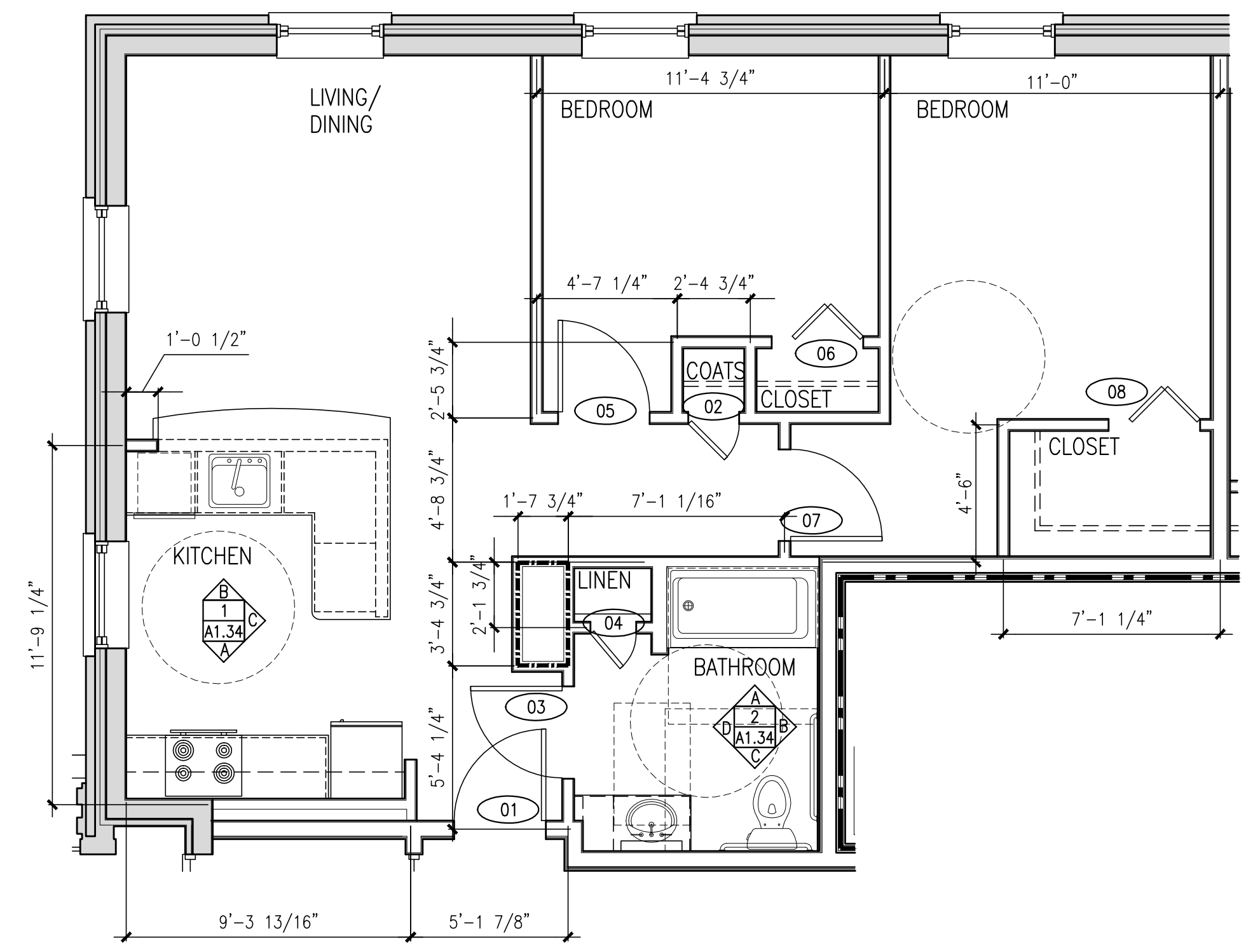
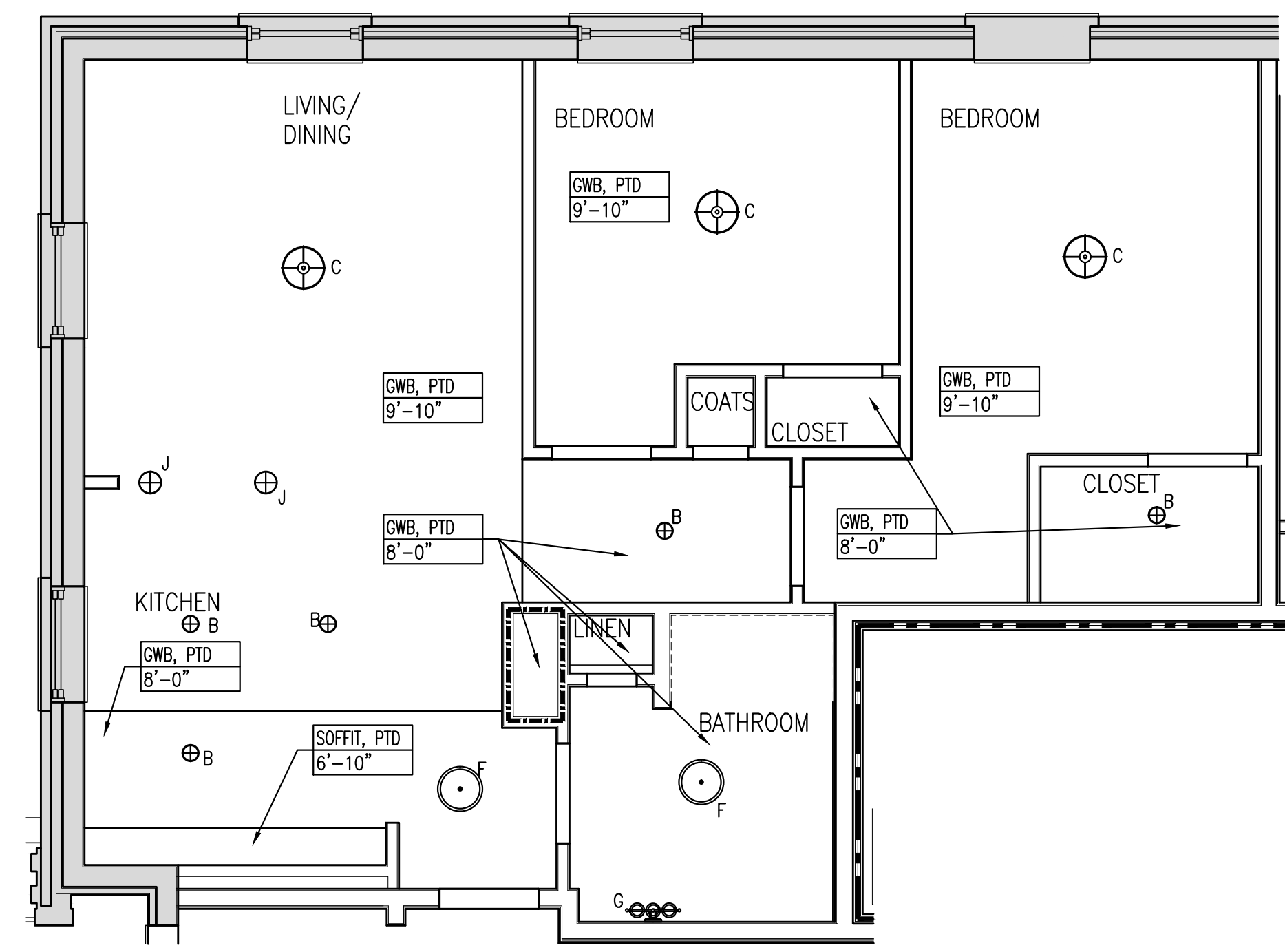


REMOVABLE VENEER PLYWOOD PANEL, PROVIDE EDGE BANDING AT EXPOSED EDGES

2 BATHROOM ELEVATIONS

REFERENCED FROM: FLOOR PLANS

SCALE: 3/8" = 1'-0"



NOTE:
 1. REFER TO A9.32 FOR TRANSITION DETAILS (TR)
 2. ROOM DIMENSIONS AND SQUARE FOOTAGES ARE INFORMATIONAL ONLY AND SHALL NOT BE USED FOR CONSTRUCTION PURPOSES.
 3. ROOM DIMENSIONS ARE FROM FACE OF FINISH WALL TO FACE OF FINISHED WALL.

A UNIT TYPE 2A-HC-1 - REFLECTED CEILING PLAN

REFERENCED FROM: UNIT 102

SCALE: 1/4" = 1'-0"

B UNIT TYPE 2A-HC-1 - DIMENSIONAL PLAN

REFERENCED FROM: UNIT 102

SCALE: 1/4" = 1'-0"

C UNIT TYPE 2A-HC-1 - LAYOUT FLOOR PLAN

REFERENCED FROM: UNIT 102

SCALE: 1/4" = 1'-0"

CWS Architects
 Architecture
 Space Planning
 Value Design

434 Cumberland Avenue
 Portland, ME 04101
 Phone: (207)774-4441
 Fax: (207)774-4016

www.CWSarch.com

REGISTERED ARCHITECT
 BENEDICT W. WILKINSON
 NO. 1947
 STATE OF MAINE

Owner:
Children's Hospital Housing Partners, LP
 309 Cumberland Ave.
 Suite 203
 Portland, Maine 04101

CONSTRUCTION MANAGER:
WRIGHT-RYAN CONSTRUCTION
 10 DANFORTH STREET
 PORTLAND, ME 04101
 TEL: (207) 773-3625

ELM TERRACE
 68 HIGH STREET
 PORTLAND, MAINE

Project No: 09428

Drawing Title:
TYPE 2A-HC-1 FLOOR PLANS, RCP, INT. ELEV

Scale: AS NOTED
 Date: ISSUED SEPTEMBER 8, 2011

Revisions:
 ▲ MAINE HOUSING CONCEPT SUBMISSION 02-01-2011
 ▲ HISTORIC PRESERVATION SUBMISSION 03-23-2011
 ▲ 50% MANHOUSING REVIEW 04-01-2011
 ▲ 90% MANHOUSING REVIEW 06-03-2011
 ▲ NPS SUBMISSION 07-01-2011
 ▲ ISSUED SEPTEMBER 8, 2011

Drawing Number:
A1.34