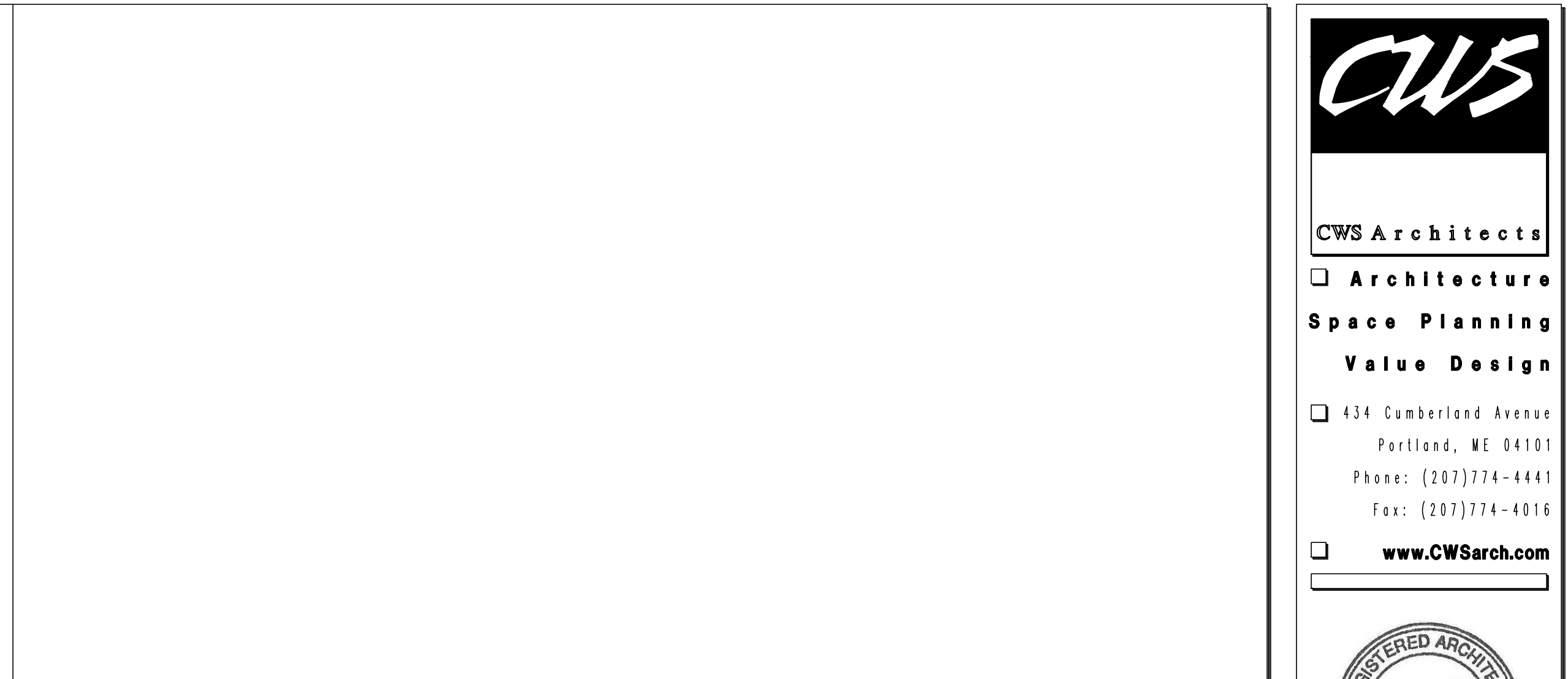
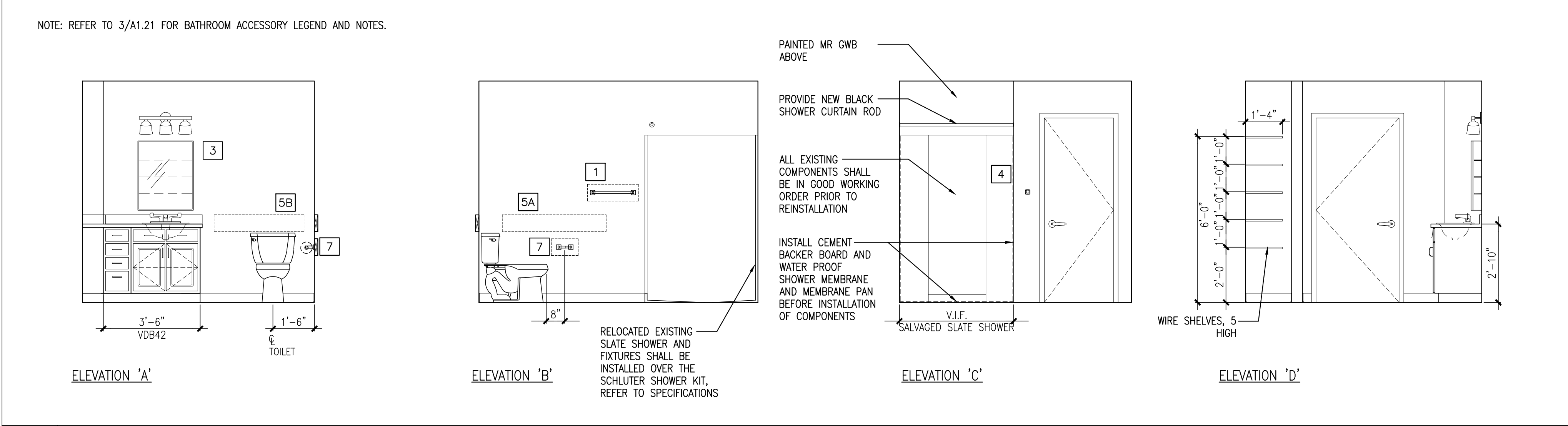


**1 KITCHEN ELEVATIONS**  
 REFERENCED FROM: FLOOR PLANS  
 SCALE: 3/8" = 1'-0"



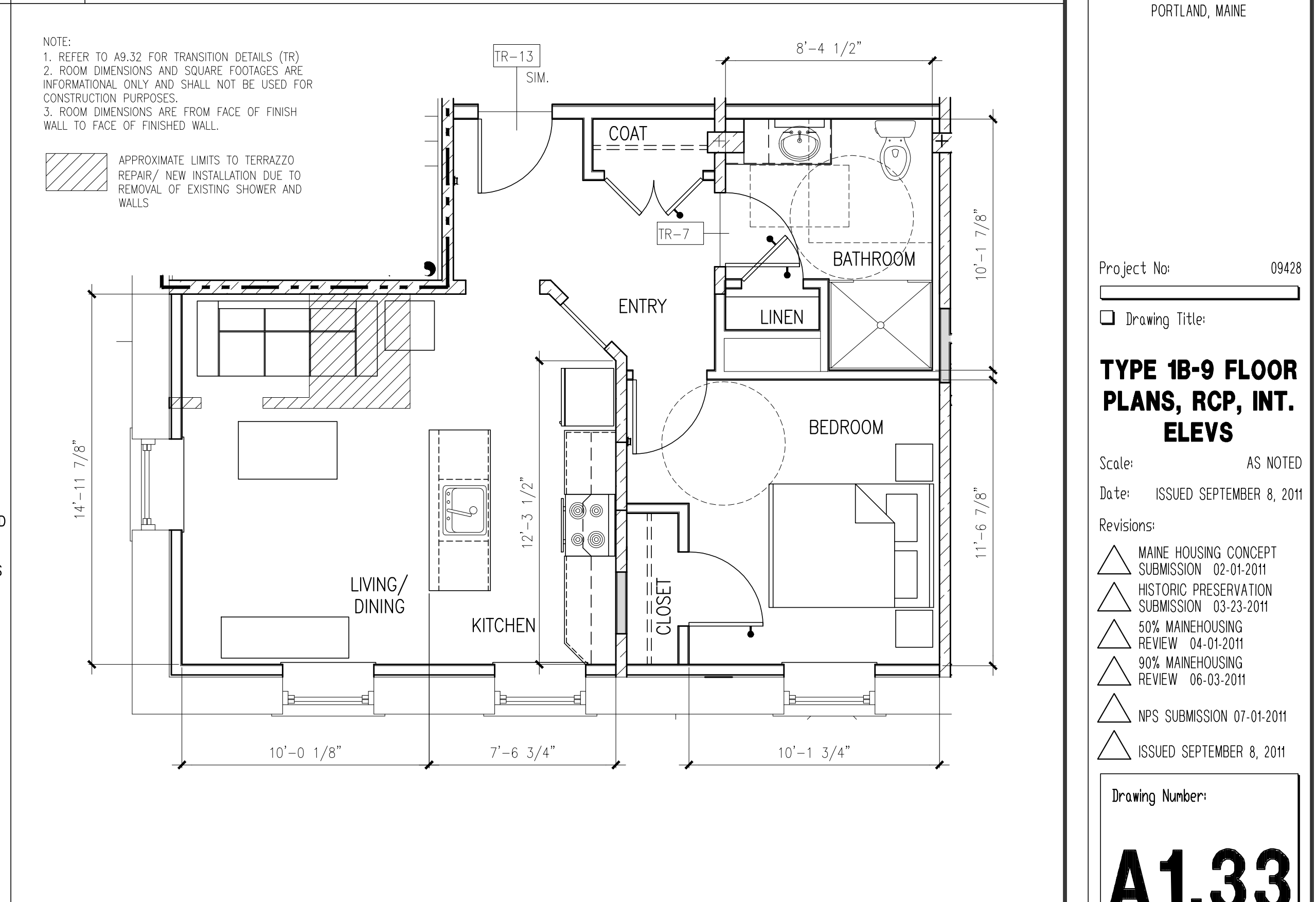
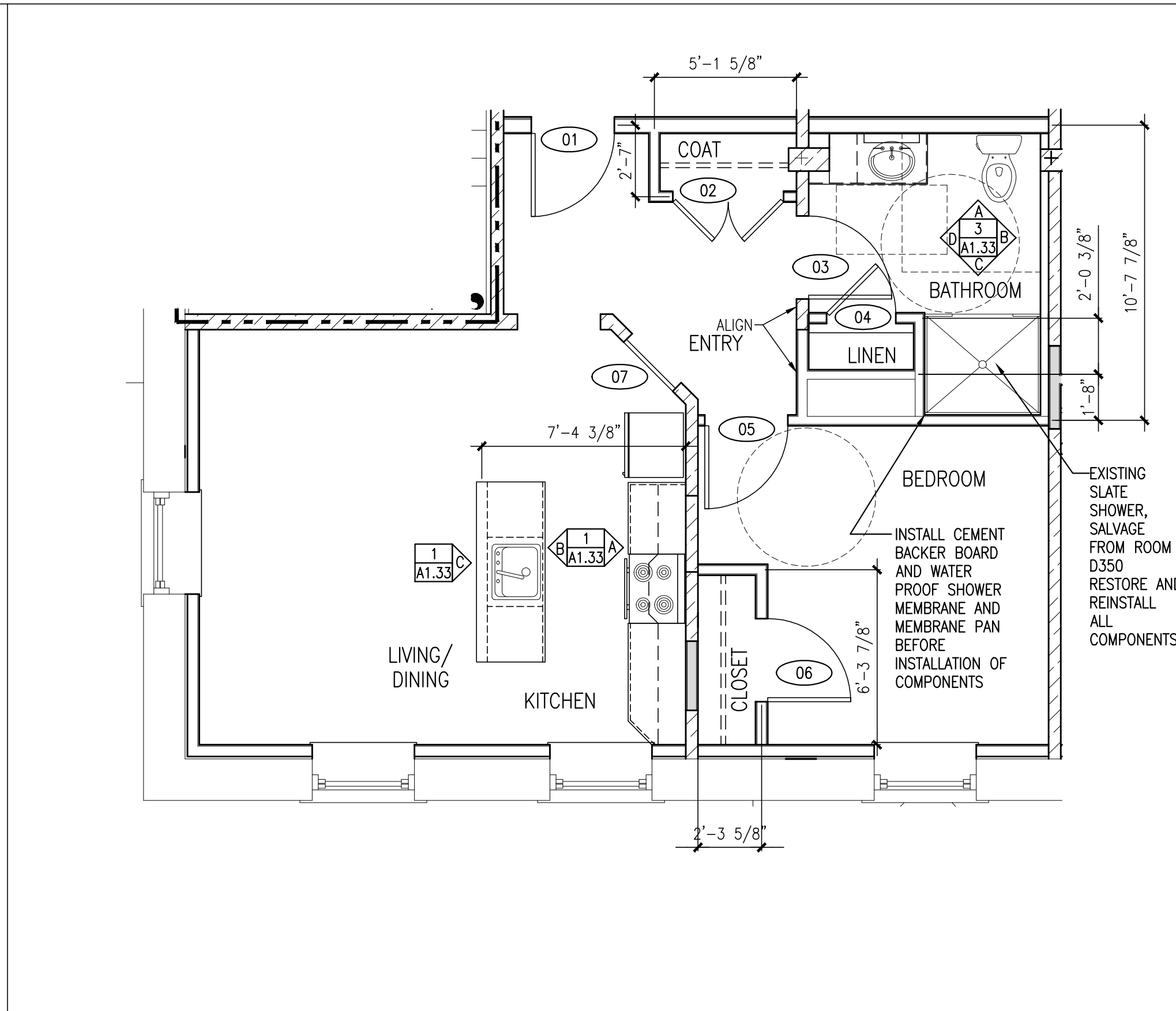
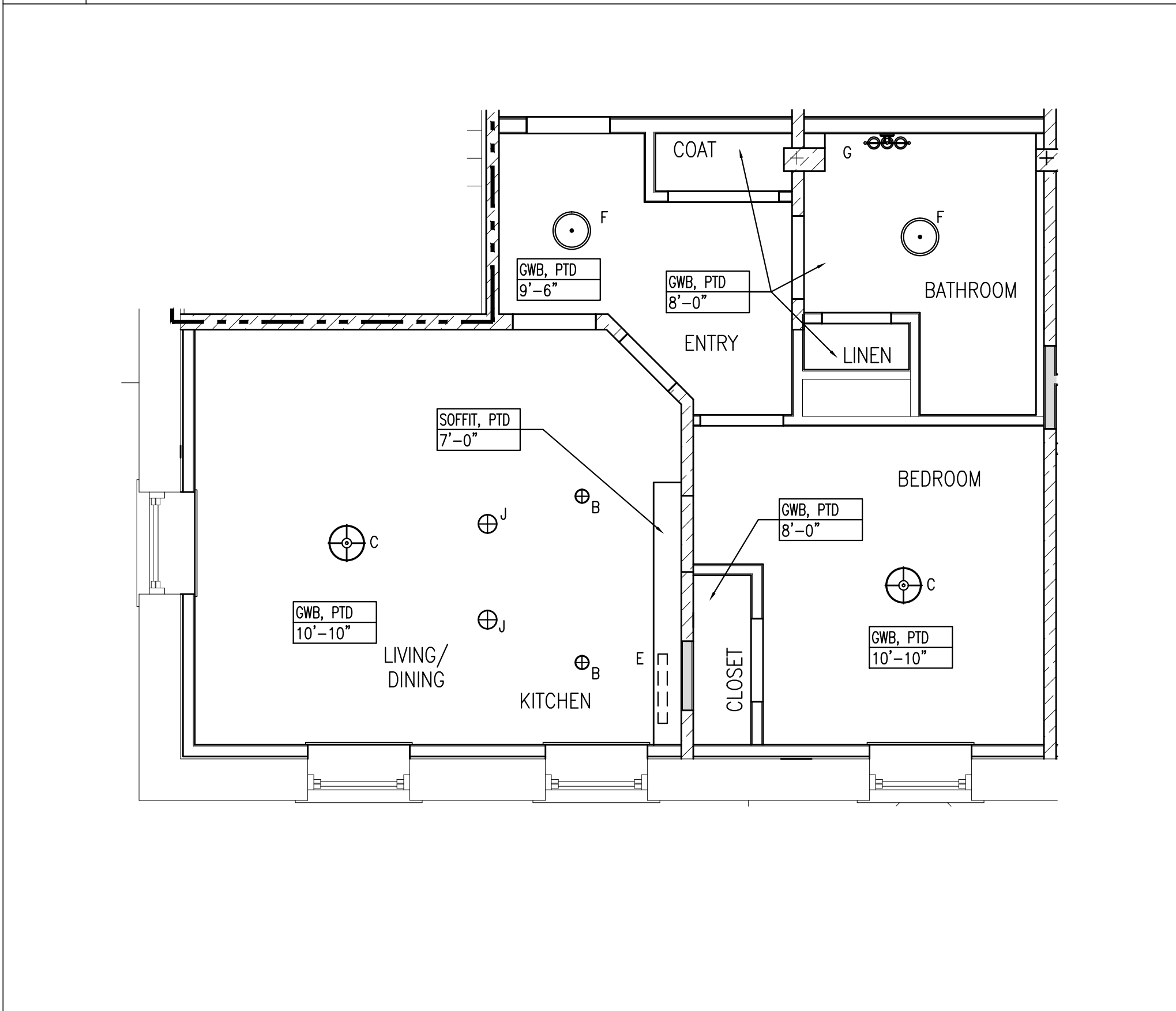
**2 DETAIL**  
 REFERENCED FROM:  
 SCALE: 1" = 1'-0"



**3 BATHROOM ELEVATIONS**  
 REFERENCED FROM: FLOOR PLANS  
 SCALE: 3/8" = 1'-0"



**4 DETAIL**  
 REFERENCED FROM:  
 SCALE: 1" = 1'-0"

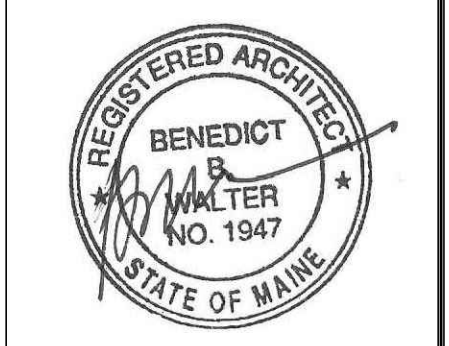


**A UNIT TYPE IB-9 - REFLECTED CEILING PLAN**  
 REFERENCED FROM: UNIT 312  
 SCALE: 1/4" = 1'-0"

**B UNIT TYPE IB-9 - DIMENSIONAL PLAN**  
 REFERENCED FROM: UNIT 312  
 SCALE: 1/4" = 1'-0"

**C UNIT TYPE IB-9 - LAYOUT FLOOR PLAN**  
 REFERENCED FROM: UNIT 312  
 SCALE: 1/4" = 1'-0"

**CWS Architects**  
 Architecture  
 Space Planning  
 Value Design  
 434 Cumberland Avenue  
 Portland, ME 04101  
 Phone: (207)774-4441  
 Fax: (207)774-4016  
 www.CWSarch.com



Owner:  
**Children's Hospital Housing Partners, LP**  
 309 Cumberland Ave.  
 Suite 203  
 Portland, Maine 04101

CONSTRUCTION MANAGER:  
**WRIGHT-RYAN CONSTRUCTION**  
 10 DANFORTH STREET  
 PORTLAND, ME 04101  
 TEL: (207) 773-3625

**ELM TERRACE**  
 68 HIGH STREET  
 PORTLAND, MAINE

Project No: 09428  
 Drawing Title:  
**TYPE 1B-9 FLOOR PLANS, RCP, INT. ELEVS**  
 Scale: AS NOTED  
 Date: ISSUED SEPTEMBER 8, 2011

Revisions:  
 MAINE HOUSING CONCEPT SUBMISSION 02-01-2011  
 HISTORIC PRESERVATION SUBMISSION 03-23-2011  
 50% MAINEHOUSING REVIEW 04-01-2011  
 90% MAINEHOUSING REVIEW 06-03-2011  
 NPS SUBMISSION 07-01-2011  
 ISSUED SEPTEMBER 8, 2011

Drawing Number:  
**A1.33**