

NOTES:
1. VERIFY OVERALL KITCHEN DIMENSIONS PRIOR TO PREPARING SHOP DRAWINGS.

1 KITCHEN ELEVATIONS

REFERENCED FROM: FLOOR PLANS

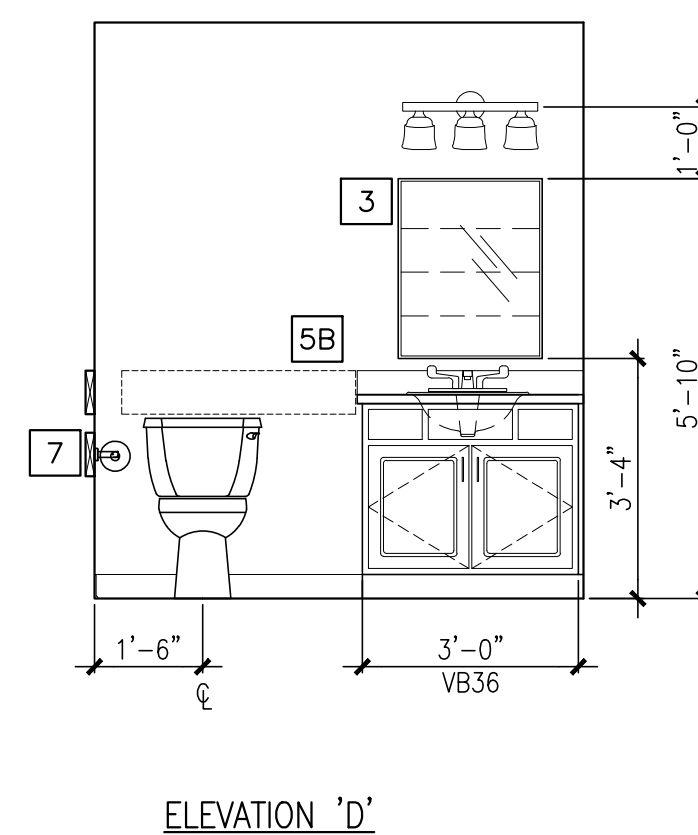
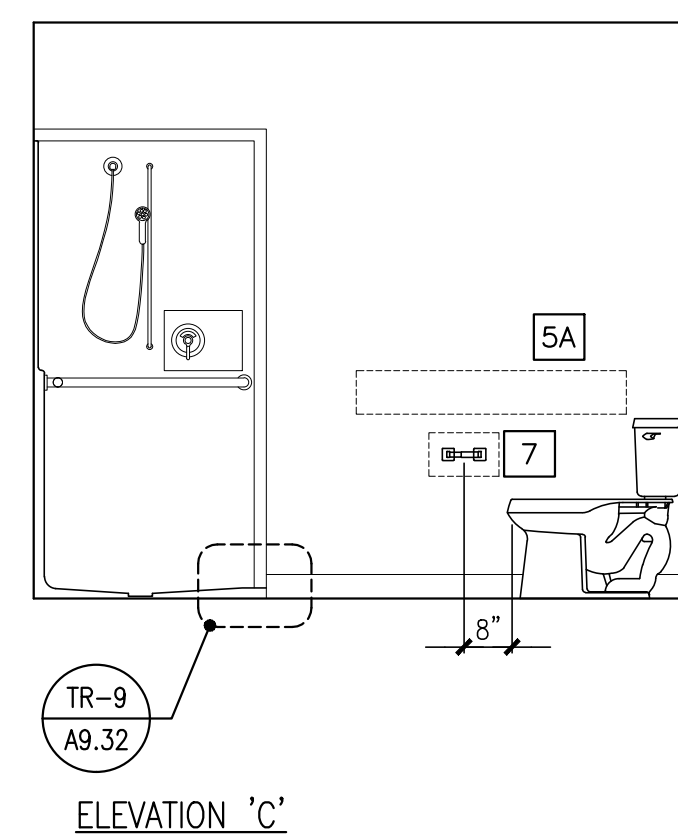
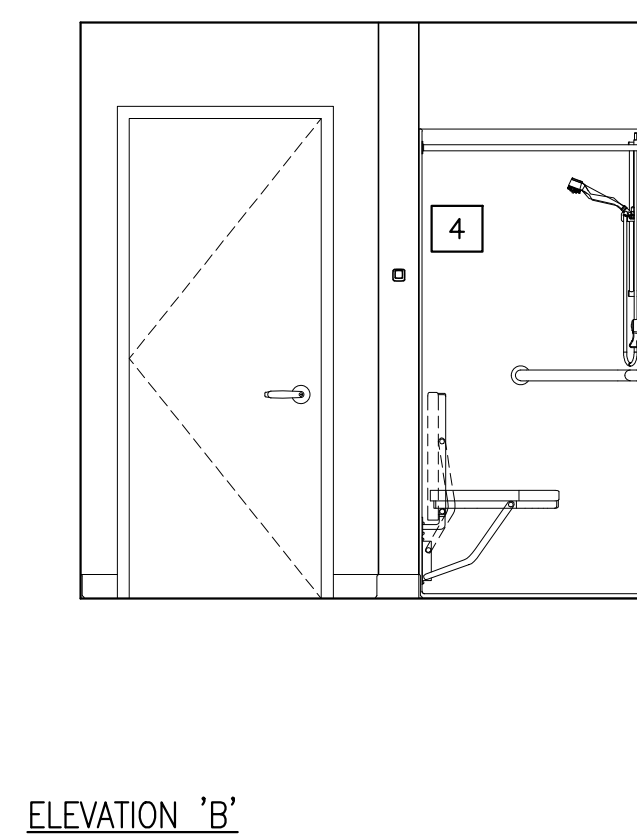
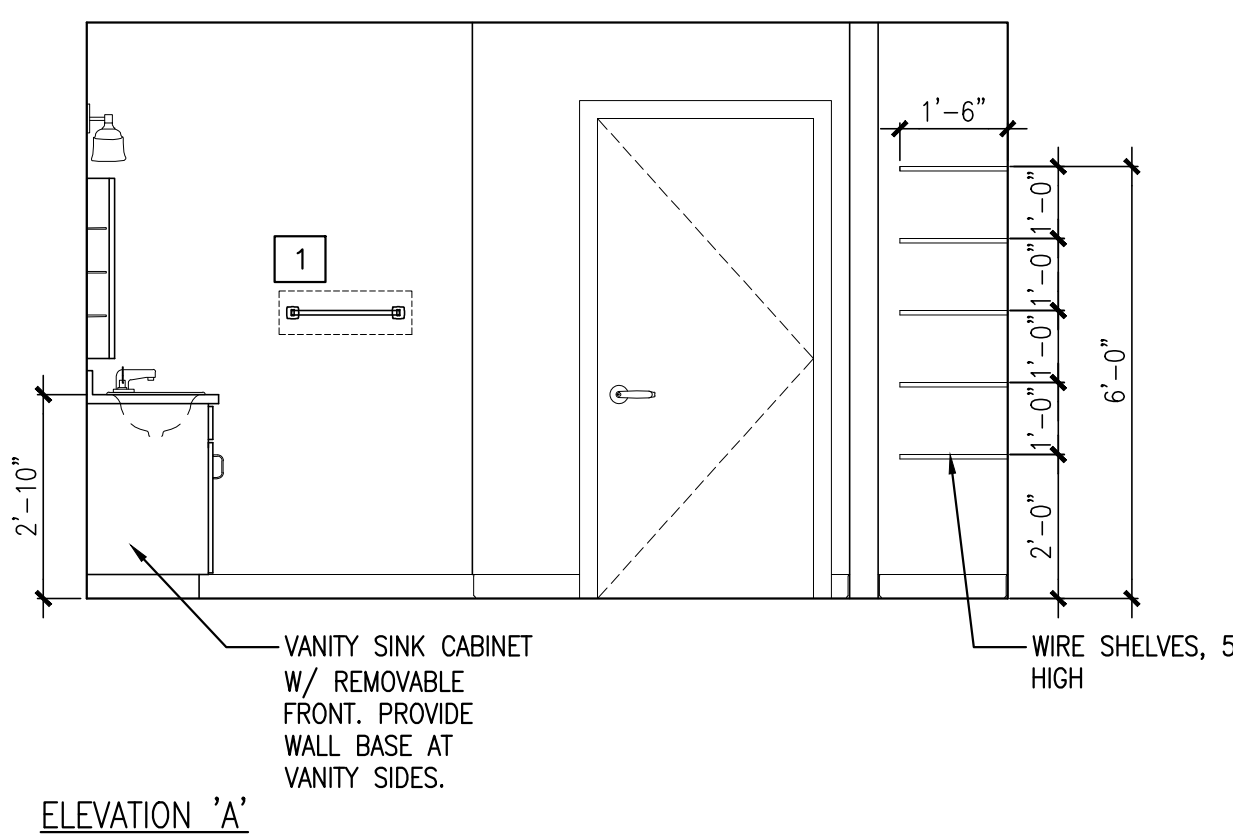
SCALE: 3/8" = 1'-0"

2 DETAIL

REFERENCED FROM:

SCALE: 1" = 1'-0"

NOTE: REFER TO 3/A1.21 FOR BATHROOM ACCESSORY LEGEND AND NOTES.



3 BATHROOM ELEVATIONS

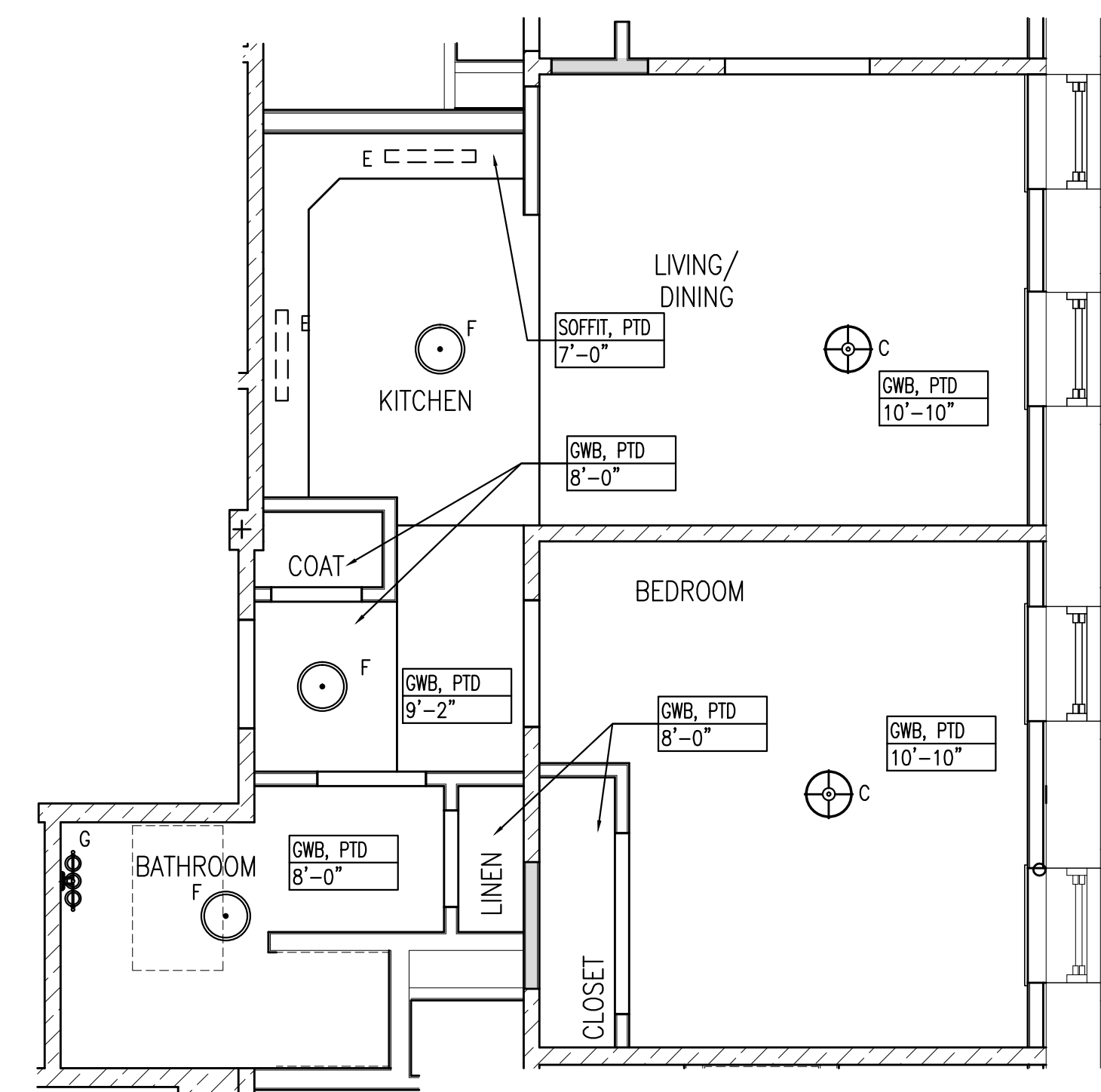
REFERENCED FROM: FLOOR PLANS

SCALE: 3/8" = 1'-0"

4 DETAIL

REFERENCED FROM:

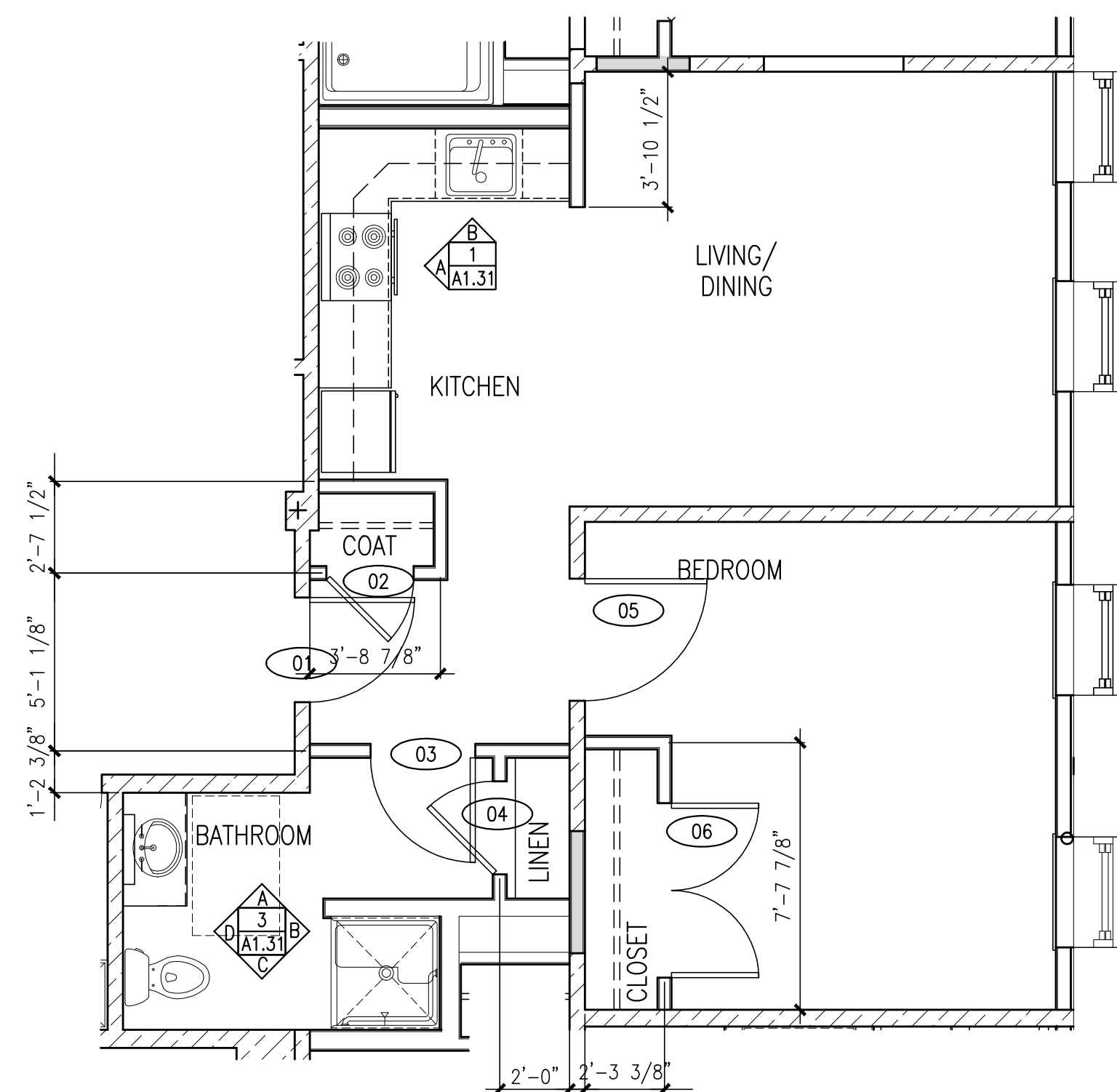
SCALE: 1" = 1'-0"



A UNIT TYPE IB-7 - REFLECTED CEILING PLAN

REFERENCED FROM: UNIT 310

SCALE: 1/4" = 1'-0"



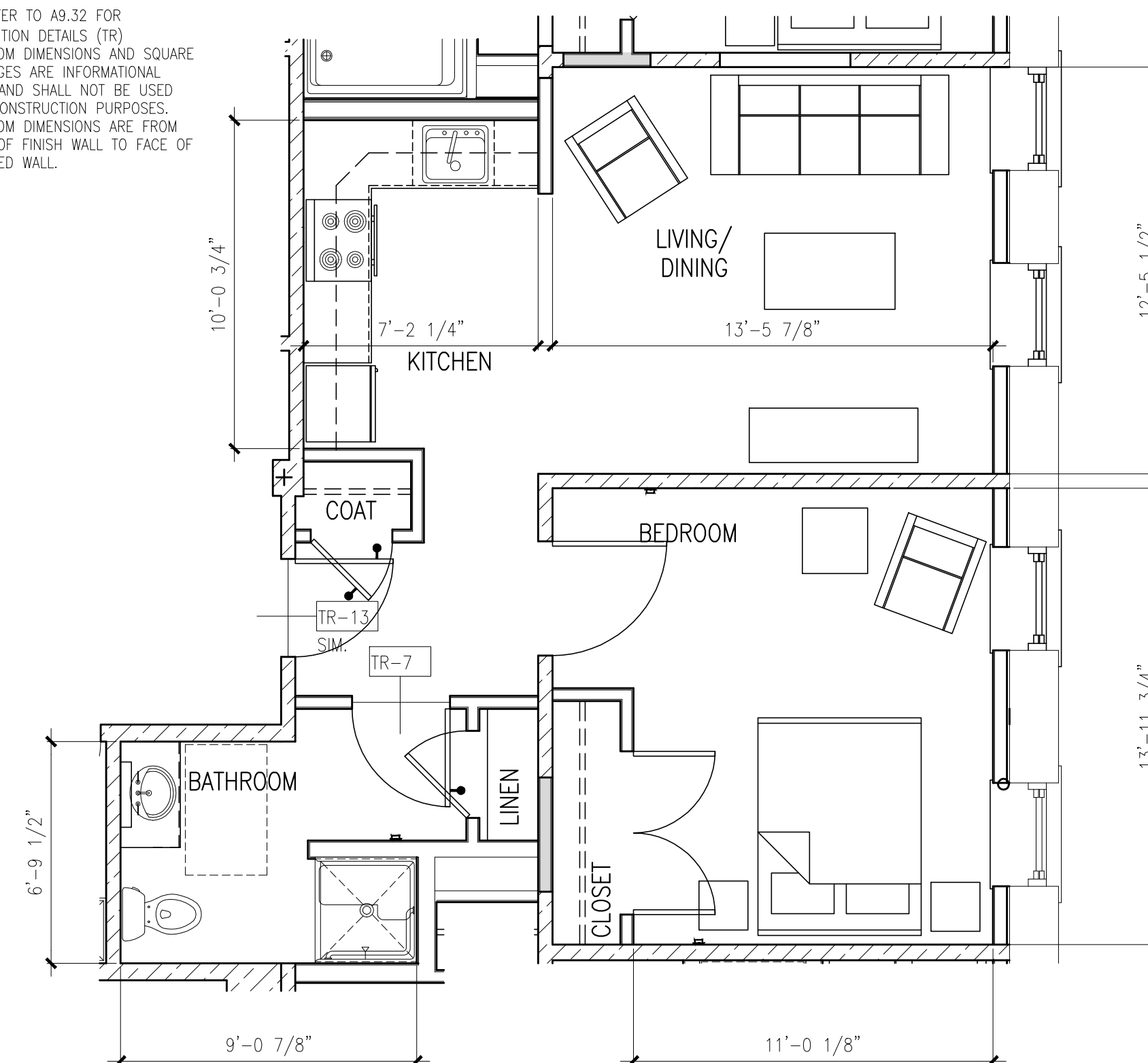
B UNIT TYPE IB-7 - DIMENSIONAL PLAN

REFERENCED FROM: UNIT 310

SCALE: 1/4" = 1'-0"

NOTE:

- REFER TO A9.32 FOR TRANSITION DETAILS (TR)
- ROOM DIMENSIONS AND SQUARE FOOTAGES ARE INFORMATIONAL ONLY AND SHALL NOT BE USED FOR CONSTRUCTION PURPOSES.
- ROOM DIMENSIONS ARE FROM FACE OF FINISH WALL TO FACE OF FINISHED WALL.



C UNIT TYPE IB-7 - LAYOUT FLOOR PLAN

REFERENCED FROM: UNIT 310

SCALE: 1/4" = 1'-0"

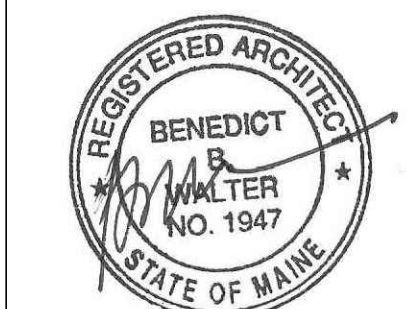


CWS Architects

Architecture
Space Planning
Value Design

434 Cumberland Avenue
Portland, ME 04101
Phone: (207)774-4441
Fax: (207)774-4016

www.CWSarch.com



Owner:

**Children's
Hospital Housing
Partners, LP**

309 Cumberland Ave.
Suite 203
Portland, Maine 04101

CONSTRUCTION MANAGER:

**WRIGHT-RYAN
CONSTRUCTION**

10 DANFORTH STREET
PORTLAND, ME 04101
TEL: (207) 773-3625

**ELM
TERRACE**

68 HIGH STREET
PORTLAND, MAINE

Project No: 09428

Drawing Title:

**TYPE 1B-7 FLOOR
PLANS, RCP, INT.
ELEVS**

Scale: AS NOTED

Date: ISSUED SEPTEMBER 8, 2011

Revisions:

- MAINE HOUSING CONCEPT SUBMISSION 02-01-2011
- HISTORIC PRESERVATION SUBMISSION 03-23-2011
- 50% MANHOUSING REVIEW 04-01-2011
- 90% MANHOUSING REVIEW 06-03-2011
- NPS SUBMISSION 07-01-2011
- ISSUED SEPTEMBER 8, 2011

Drawing Number:

A1.31