

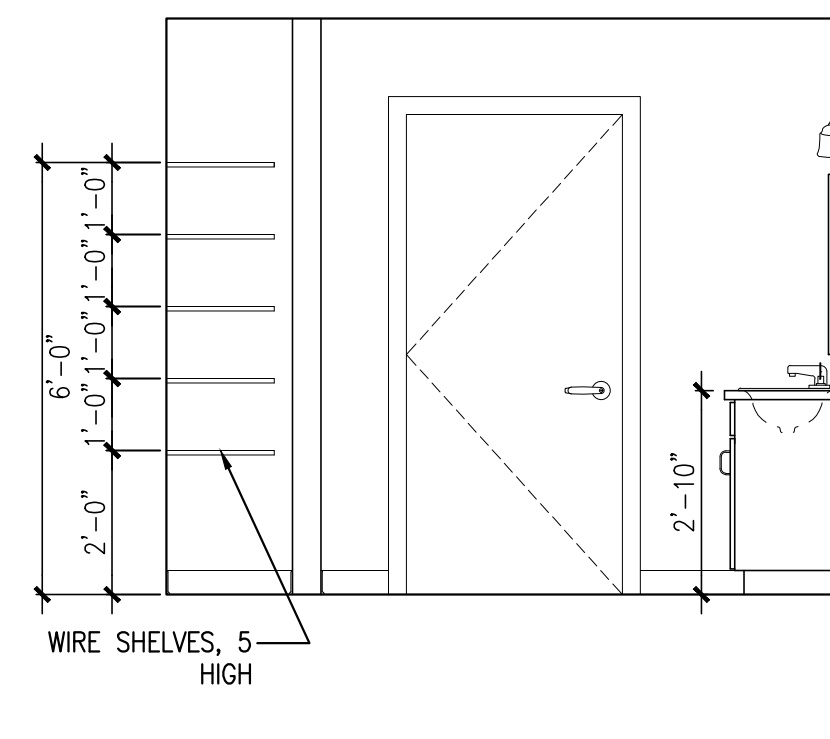
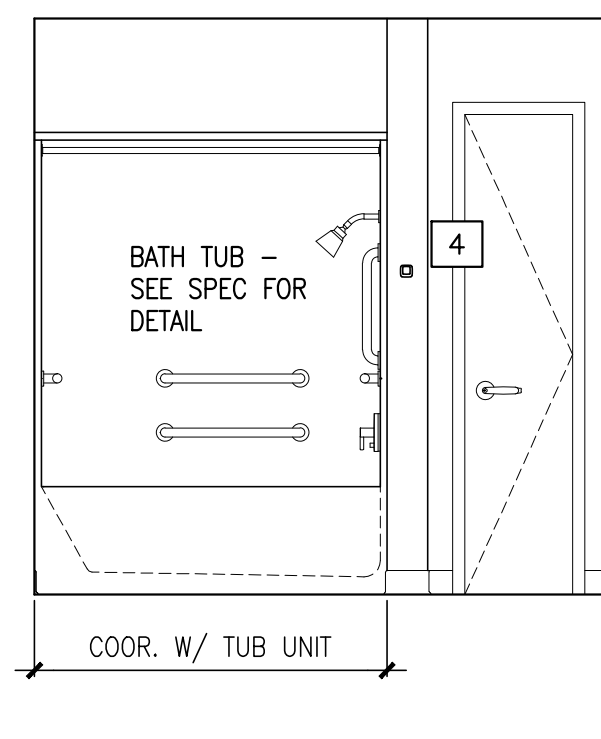
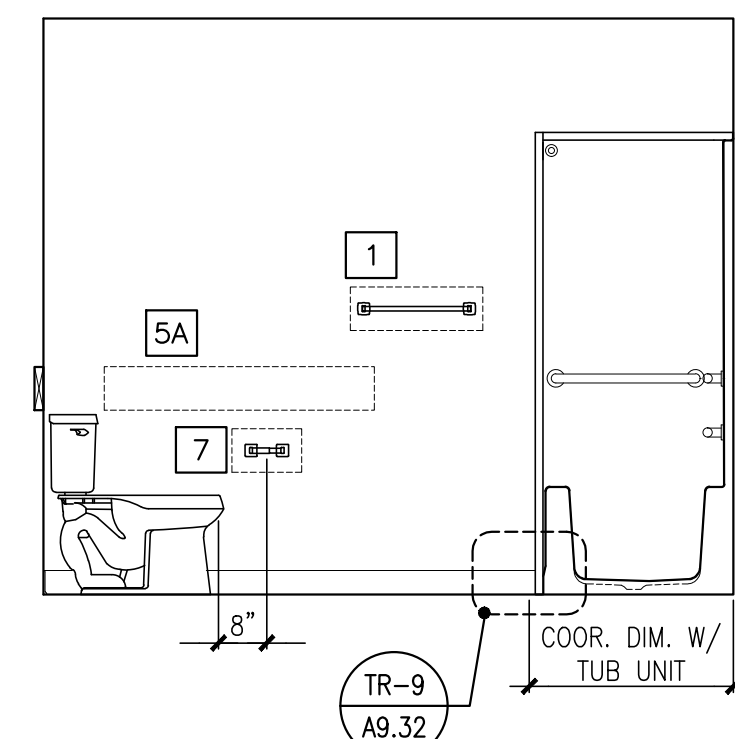
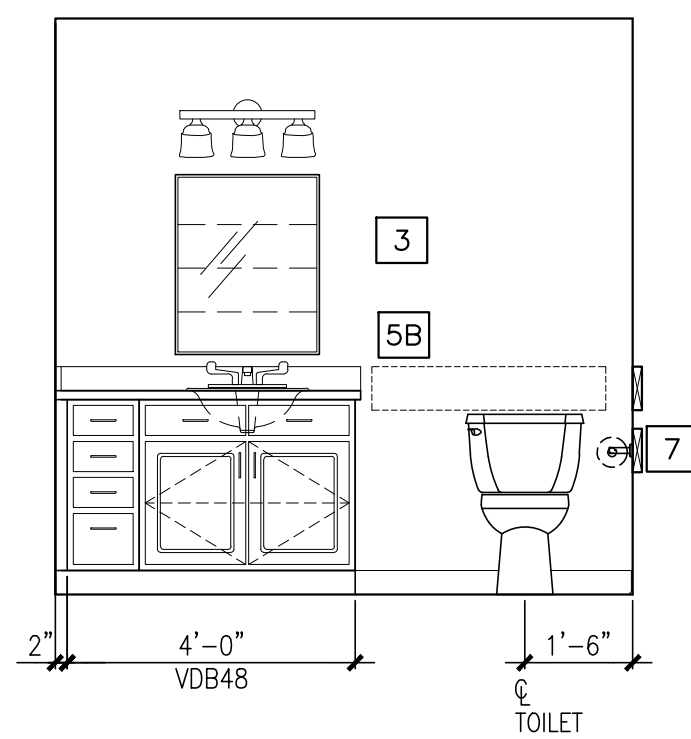
NOTES:  
1. VERIFY OVERALL KITCHEN DIMENSIONS PRIOR TO PREPARING SHOP DRAWINGS.

**1 KITCHEN ELEVATIONS**

REFERENCED FROM: FLOOR PLANS

SCALE: 3/8" = 1'-0"

NOTE: REFER TO 3/A1.21 FOR BATHROOM ACCESSORY LEGEND AND NOTES.



ELEVATION 'A'

ELEVATION 'B'

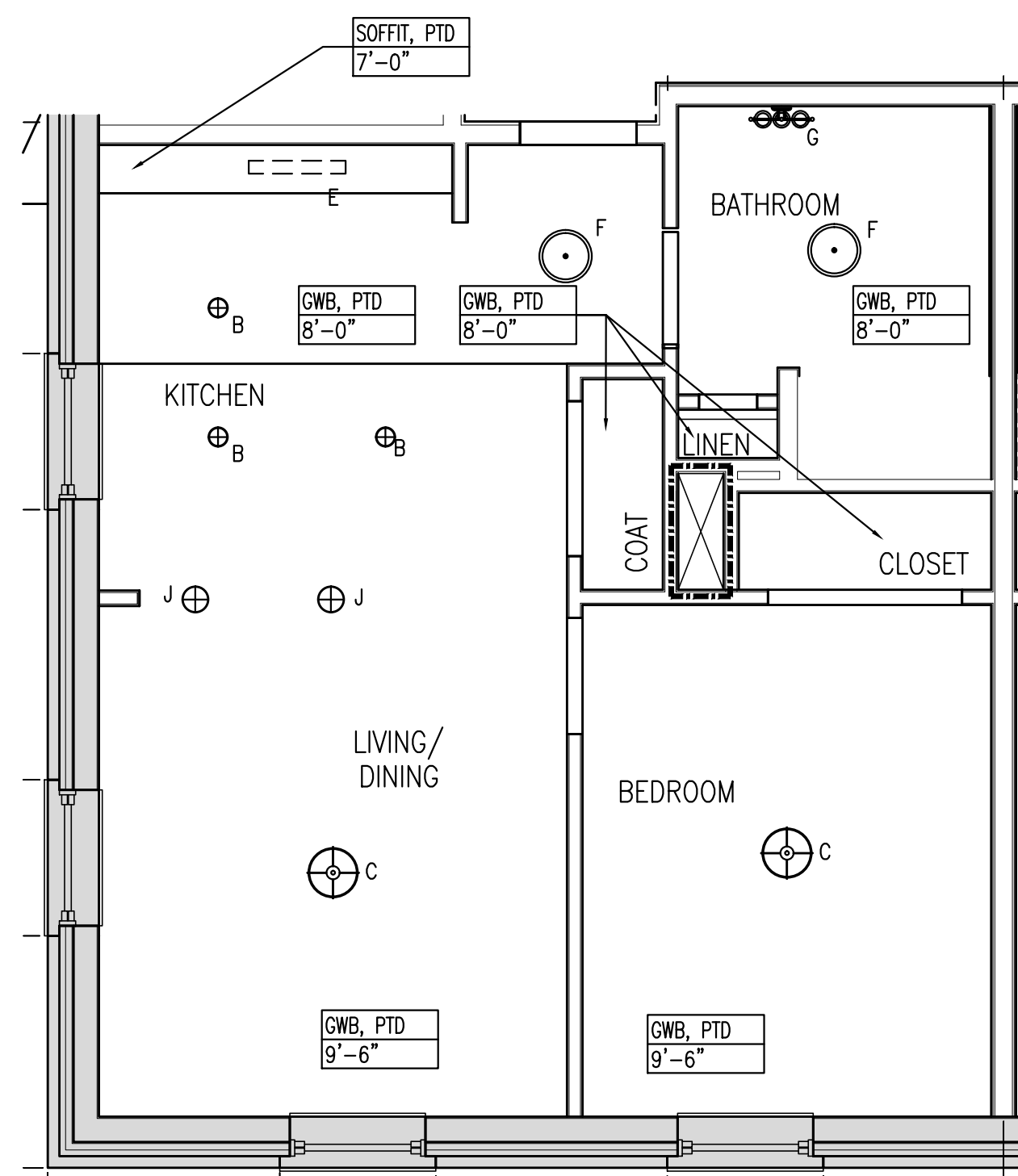
ELEVATION 'C'

ELEVATION 'D'

**3 BATHROOM ELEVATIONS**

REFERENCED FROM: FLOOR PLANS

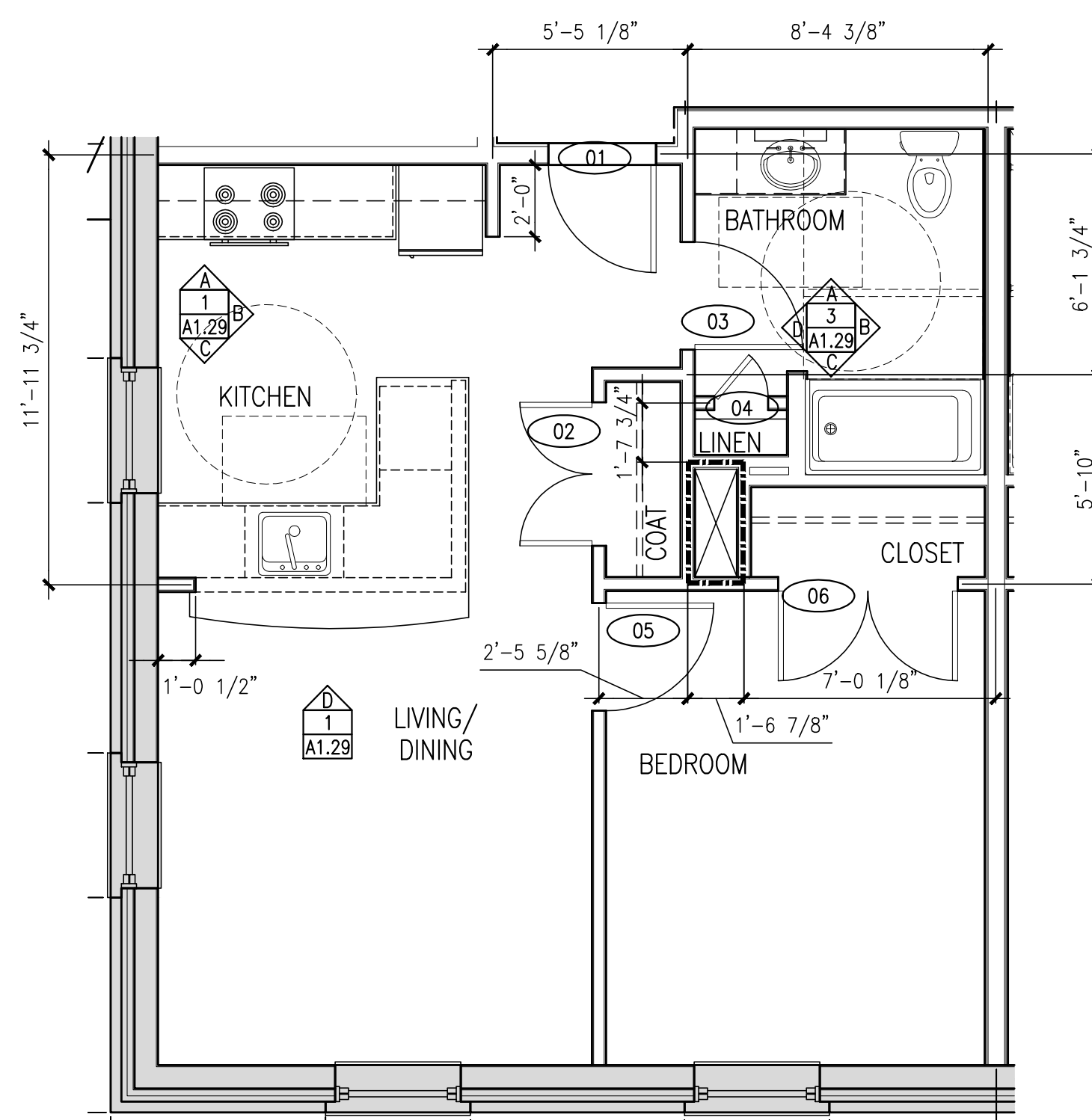
SCALE: 3/8" = 1'-0"



**A UNIT TYPE 1B-5 - REFLECTED CEILING PLAN**

REFERENCED FROM: UNIT 201, 301

SCALE: 1/4" = 1'-0"



**B UNIT TYPE 1B-5 - DIMENSIONAL PLAN**

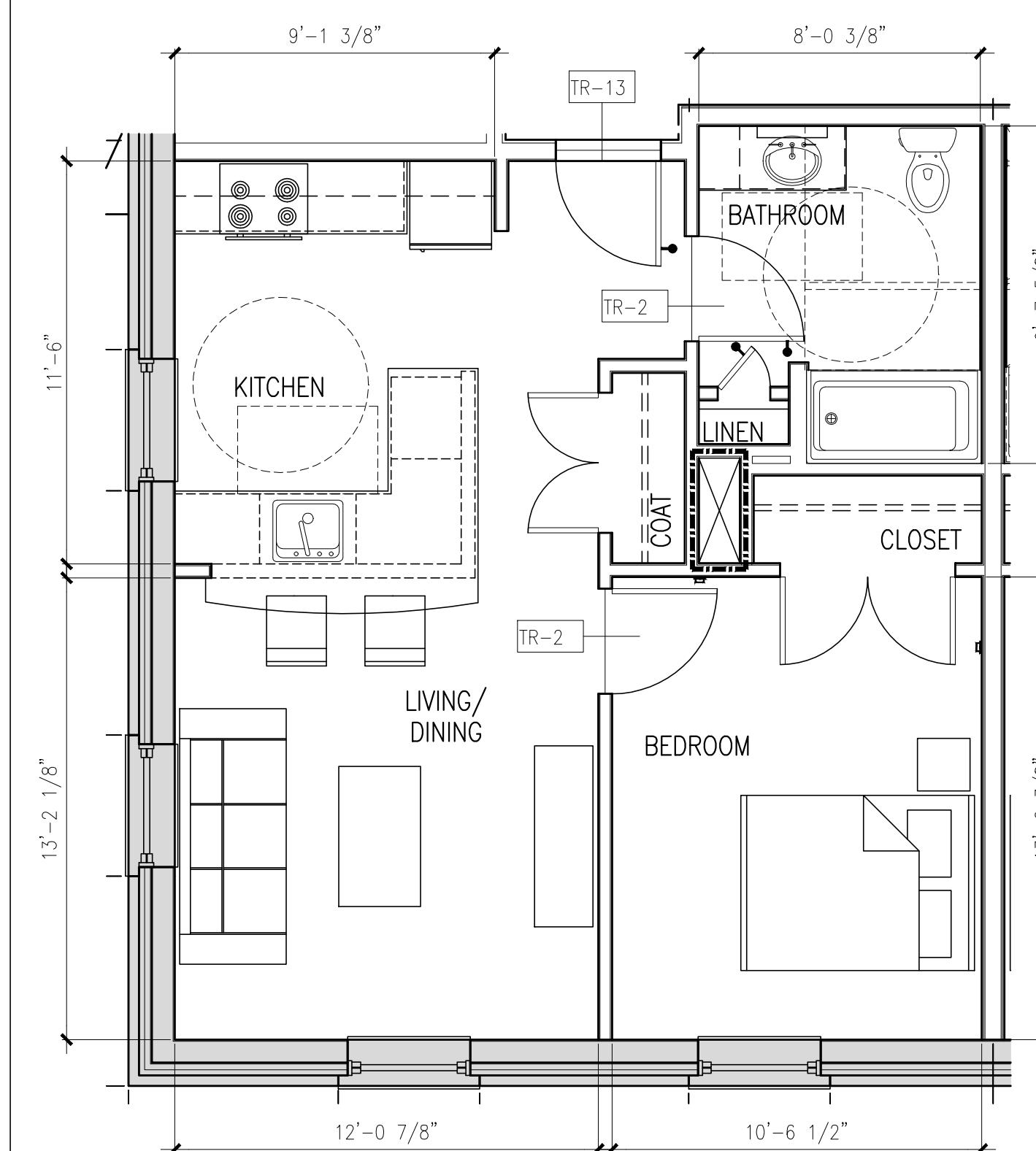
REFERENCED FROM: UNIT 201, 301

SCALE: 1/4" = 1'-0"

**4 DETAIL**

REFERENCED FROM:

SCALE: 1" = 1'-0"



NOTE:  
1. REFER TO A9.32 FOR TRANSITION DETAILS (TR)  
2. ROOM DIMENSIONS AND SQUARE FOOTAGES ARE INFORMATIONAL ONLY AND SHALL NOT BE USED FOR CONSTRUCTION PURPOSES.  
3. ROOM DIMENSIONS ARE FROM FACE OF FINISH WALL TO FACE OF FINISHED WALL.

**C UNIT TYPE 1B-5 - LAYOUT FLOOR PLAN**

REFERENCED FROM: UNIT 201, 301

SCALE: 1/4" = 1'-0"

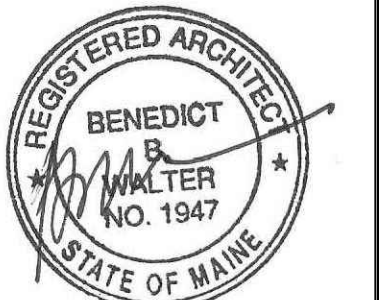


CWS Architects

Architecture  
Space Planning  
Value Design

434 Cumberland Avenue  
Portland, ME 04101  
Phone: (207)774-4441  
Fax: (207)774-4016

www.CWSarch.com



Owner:

**Children's Hospital Housing Partners, LP**

309 Cumberland Ave.  
Suite 203  
Portland, Maine 04101

CONSTRUCTION MANAGER:

**WRIGHT-RYAN CONSTRUCTION**

10 DANFORTH STREET  
PORTLAND, ME 04101  
TEL: (201) 773-3625

**ELM TERRACE**

68 HIGH STREET  
PORTLAND, MAINE

Project No: 09428

Drawing Title:

**TYPE 1B-5 FLOOR PLANS, RCP, INT. ELEVS**

Scale: AS NOTED

Date: ISSUED SEPTEMBER 8, 2011

Revisions:

- △ MAINE HOUSING CONCEPT SUBMISSION 02-01-2011
- △ HISTORIC PRESERVATION SUBMISSION 03-23-2011
- △ 50% MAINEHOUSING REVIEW 04-01-2011
- △ 90% MAINEHOUSING REVIEW 06-03-2011
- △ NPS SUBMISSION 07-01-2011
- △ ISSUED SEPTEMBER 8, 2011

Drawing Number:

**A1.29**