

NOTES:  
1. VERIFY OVERALL KITCHEN DIMENSIONS PRIOR TO PREPARING SHOP DRAWINGS.

ELEVATION 'B'

ELEVATION 'C'

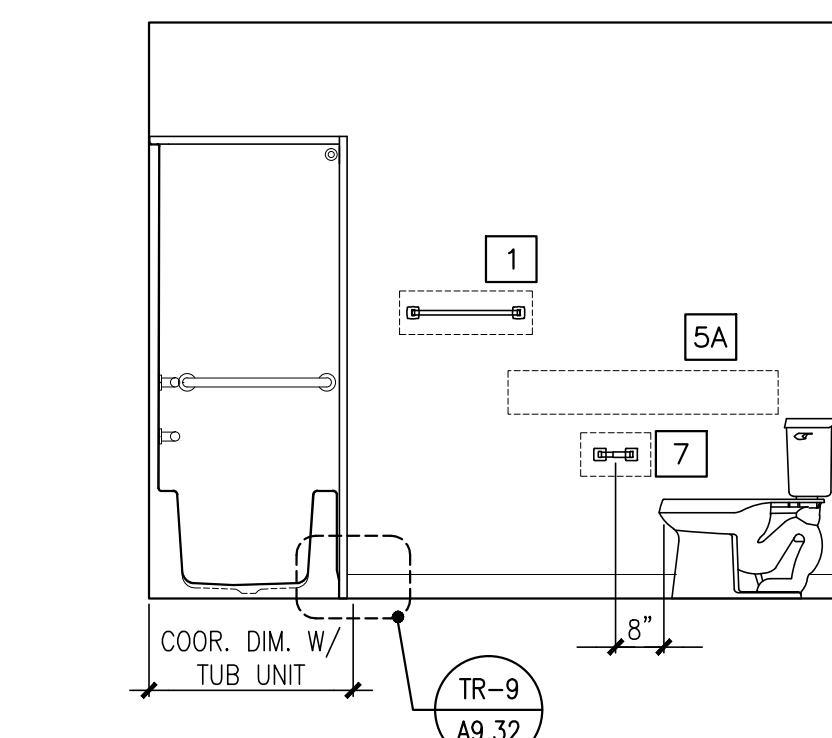
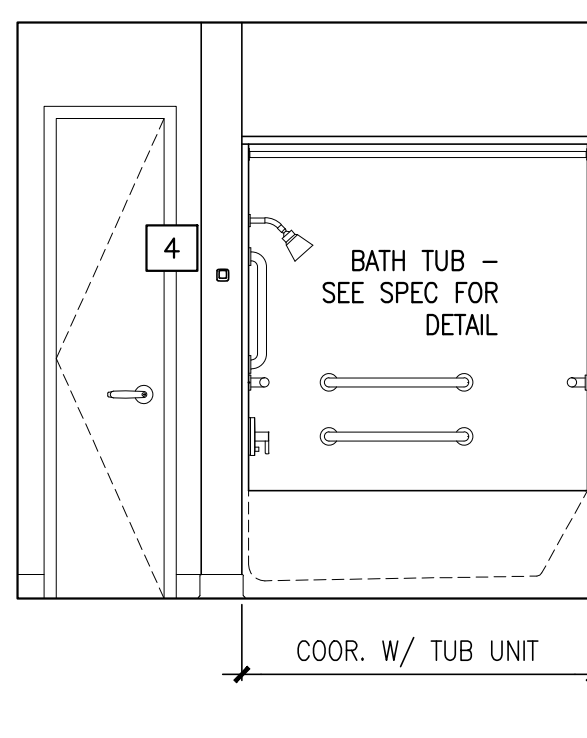
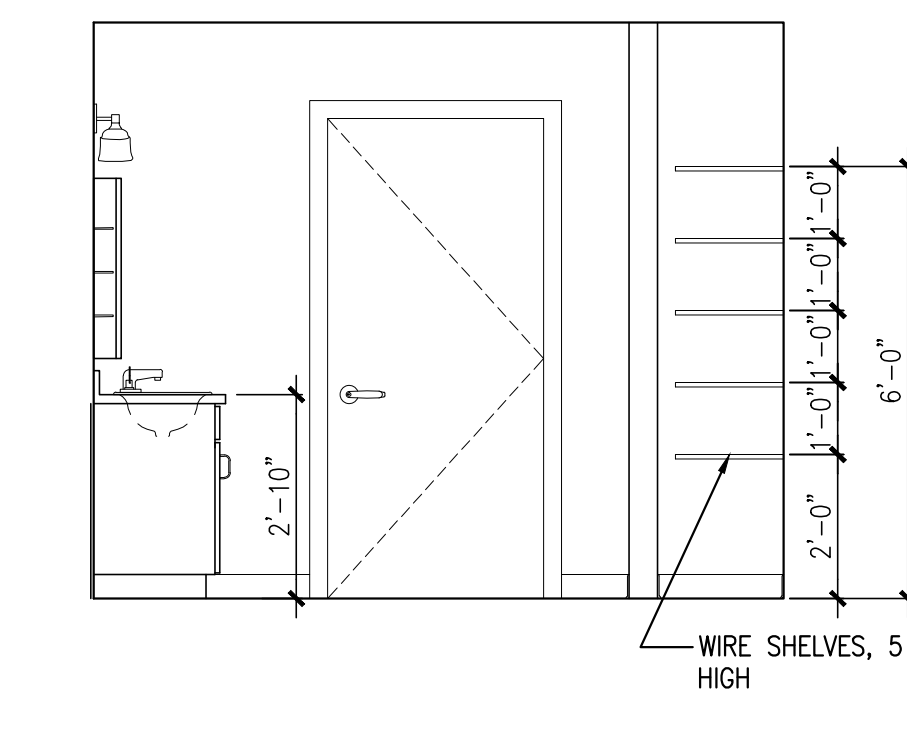
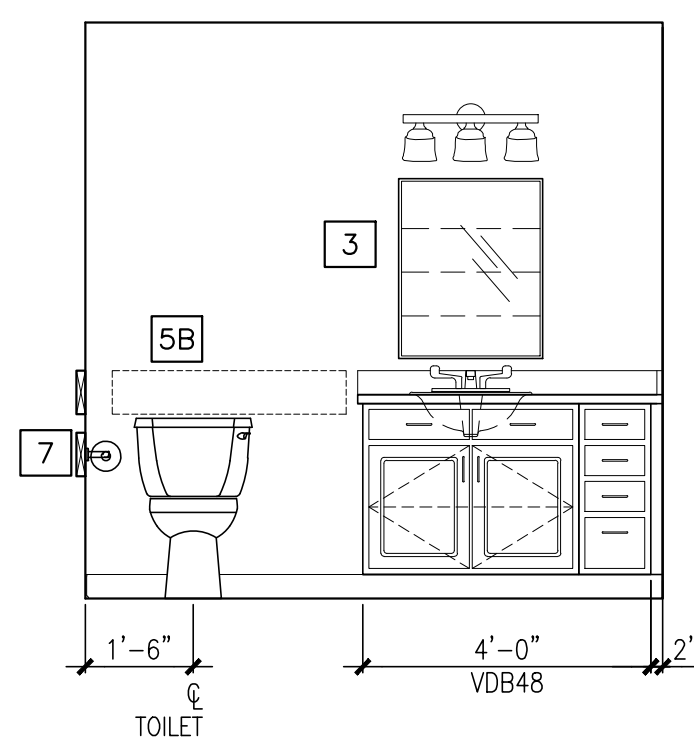
ELEVATION 'D'

**1 KITCHEN ELEVATIONS**

REFERENCED FROM: FLOOR PLANS

SCALE: 3/8" = 1'-0"

NOTE: REFER TO 3/A1.21 FOR BATHROOM ACCESSORY LEGEND AND NOTES.



**3 BATHROOM ELEVATIONS**

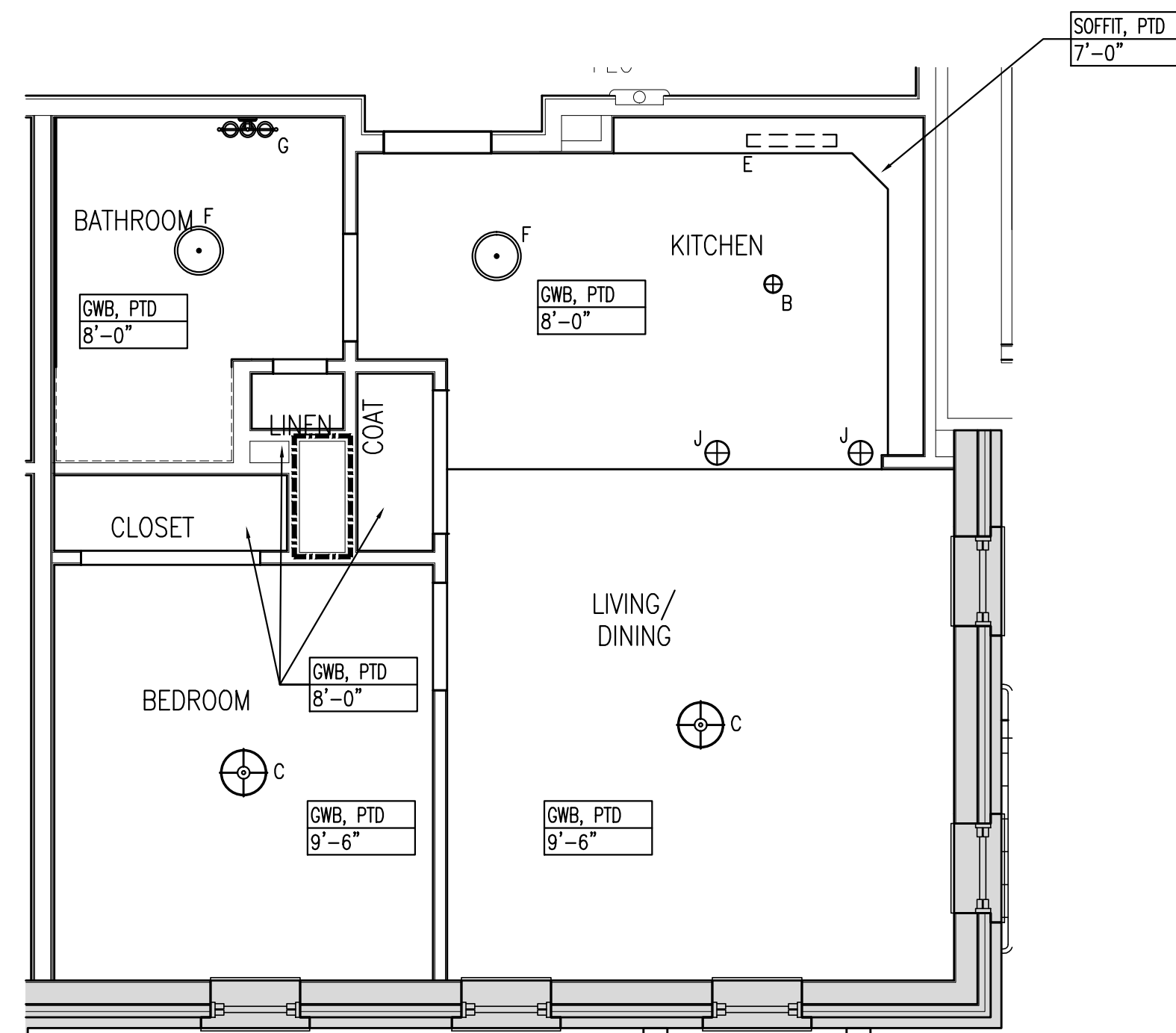
REFERENCED FROM: FLOOR PLANS

SCALE: 3/8" = 1'-0"

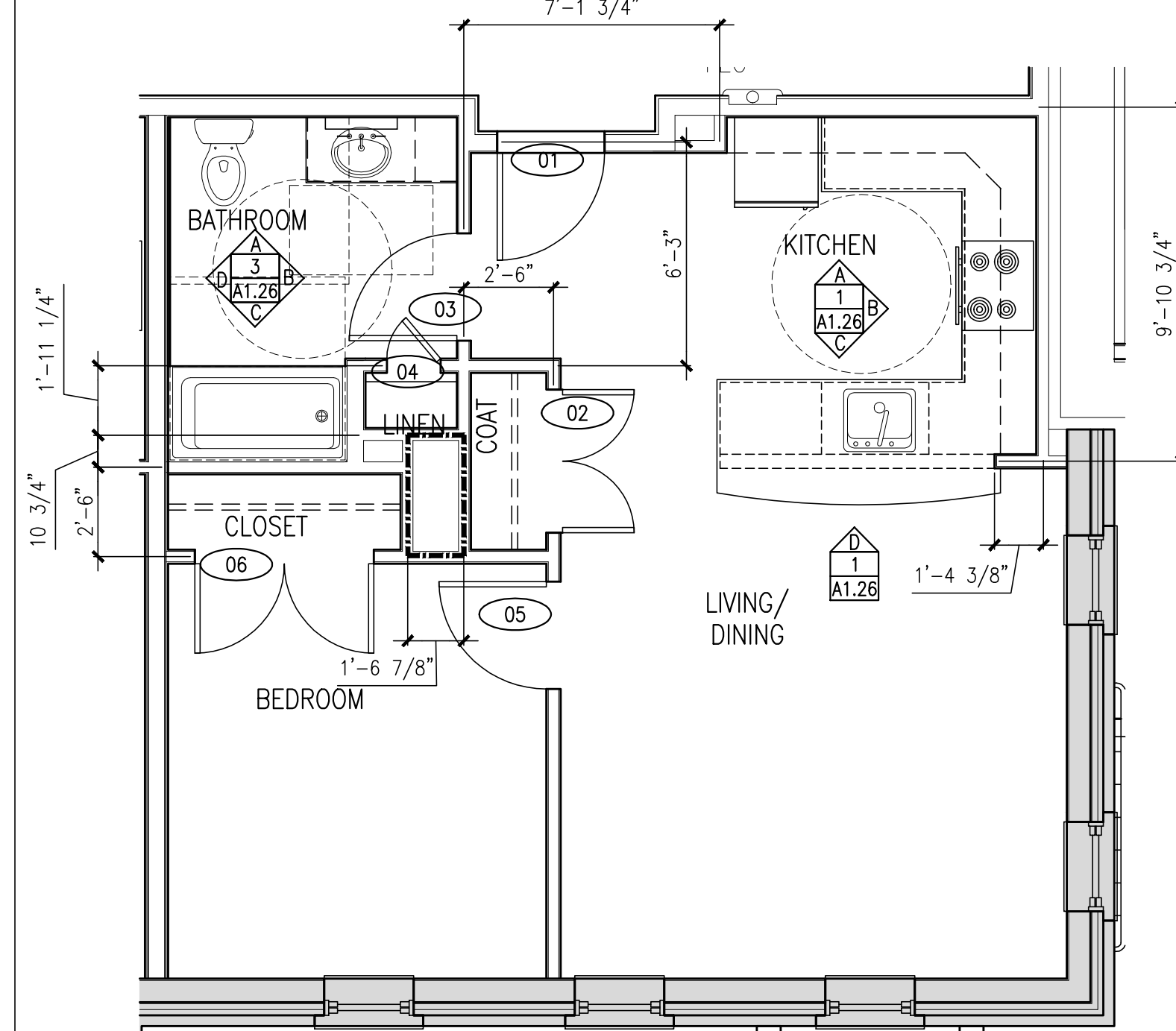
**4 DETAIL**

REFERENCED FROM:

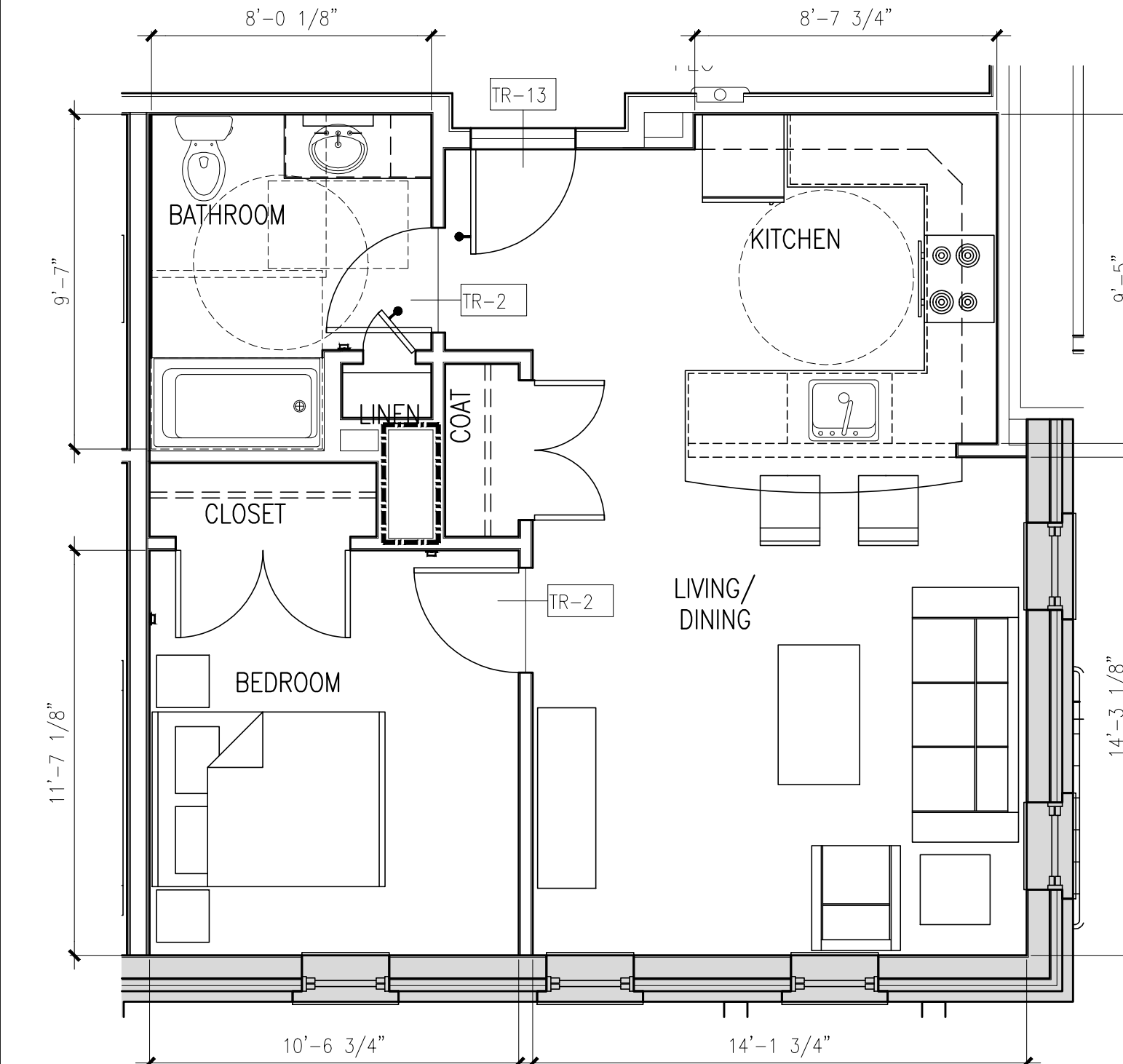
SCALE: 1" = 1'-0"



SCALE: 1/4" = 1'-0"



SCALE: 1/4" = 1'-0"



NOTE:  
1. REFER TO A9.32 FOR TRANSITION DETAILS (TR)  
2. ROOM DIMENSIONS AND SQUARE FOOTAGES ARE INFORMATIONAL ONLY AND SHALL NOT BE USED FOR CONSTRUCTION PURPOSES.  
3. ROOM DIMENSIONS ARE FROM FACE OF FINISH WALL TO FACE OF FINISHED WALL.

REFERENCED FROM: UNIT 105, 205, 305

SCALE: 1/4" = 1'-0"



CWS Architects

Architecture  
Space Planning  
Value Design

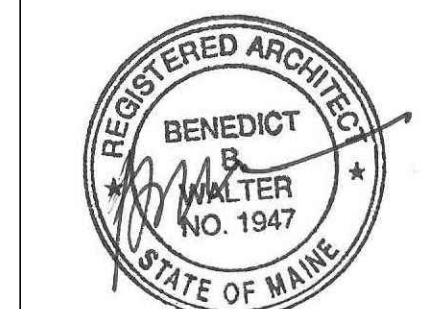
434 Cumberland Avenue

Portland, ME 04101

Phone: (207)774-4441

Fax: (207)774-4016

www.CWSarch.com



Owner:

**Children's Hospital Housing Partners, LP**

309 Cumberland Ave.

Suite 203

Portland, Maine 04101

CONSTRUCTION MANAGER:

**WRIGHT-RYAN CONSTRUCTION**

10 DANFORTH STREET

PORTLAND, ME 04101

TEL: (201) 773-3625

**ELM TERRACE**

68 HIGH STREET  
PORTLAND, MAINE

Project No: 09428

Drawing Title:

**TYPE 1B-2 FLOOR PLANS, RCP, INT. ELEV'S**

Scale: AS NOTED

Date: ISSUED SEPTEMBER 8, 2011

Revisions:

MAINE HOUSING CONCEPT SUBMISSION 02-01-2011

HISTORIC PRESERVATION SUBMISSION 03-23-2011

50% MAINEHOUSING REVIEW 04-01-2011

90% MAINEHOUSING REVIEW 06-03-2011

NPS SUBMISSION 07-01-2011

ISSUED SEPTEMBER 8, 2011

Drawing Number:

**A1.26**