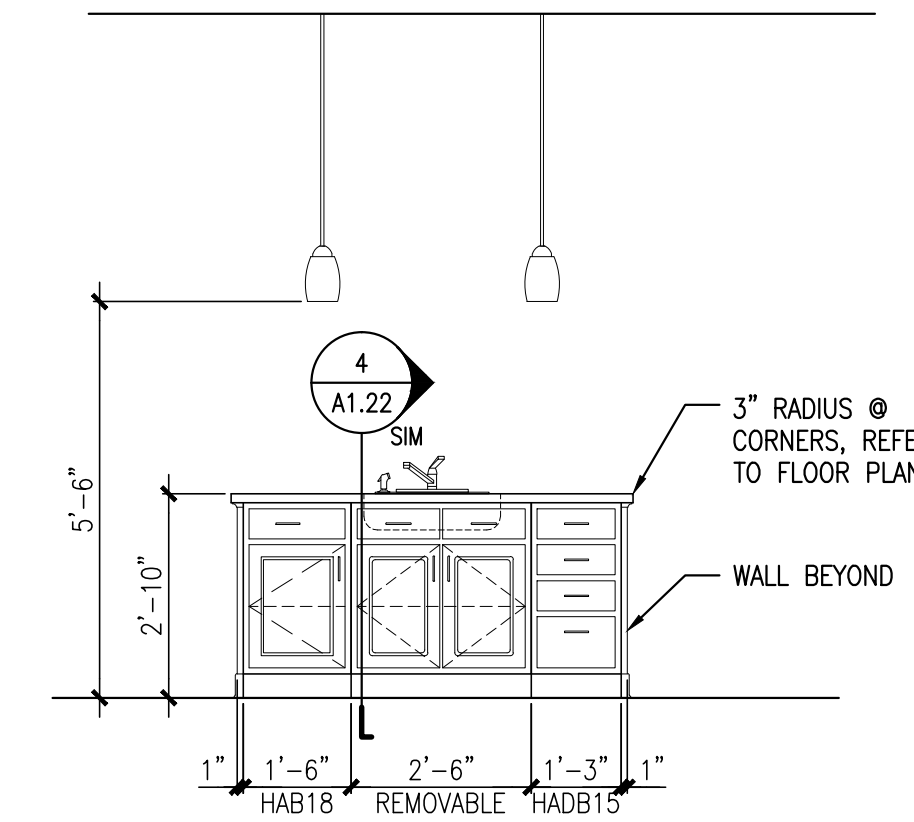
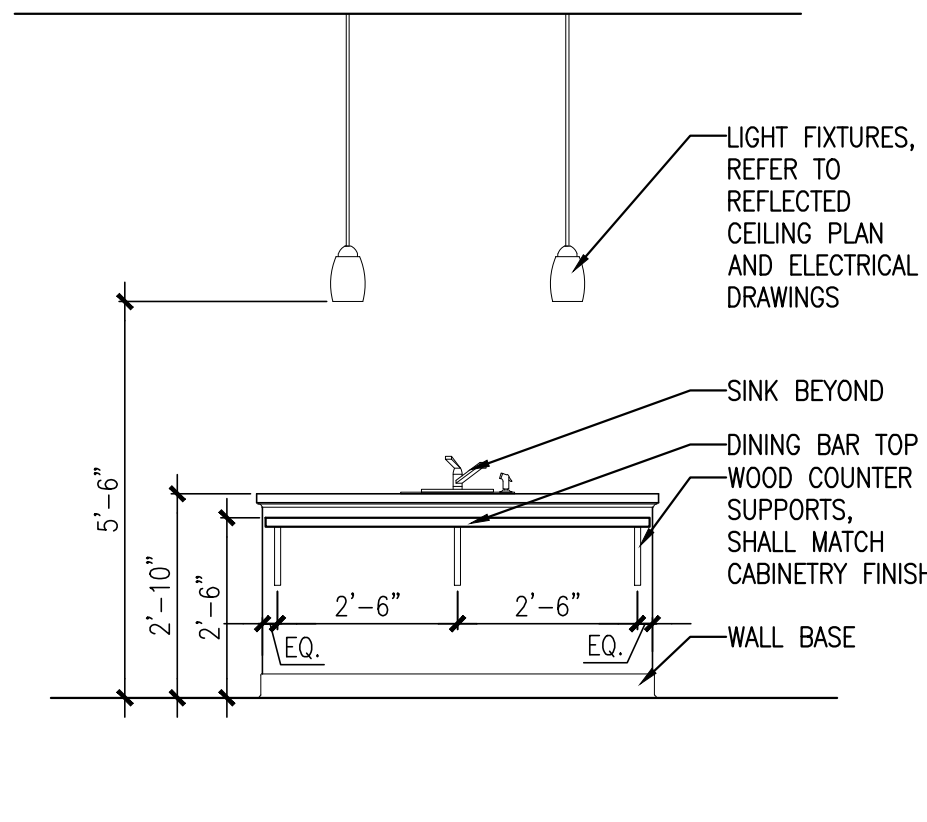


ELEVATION 'A'

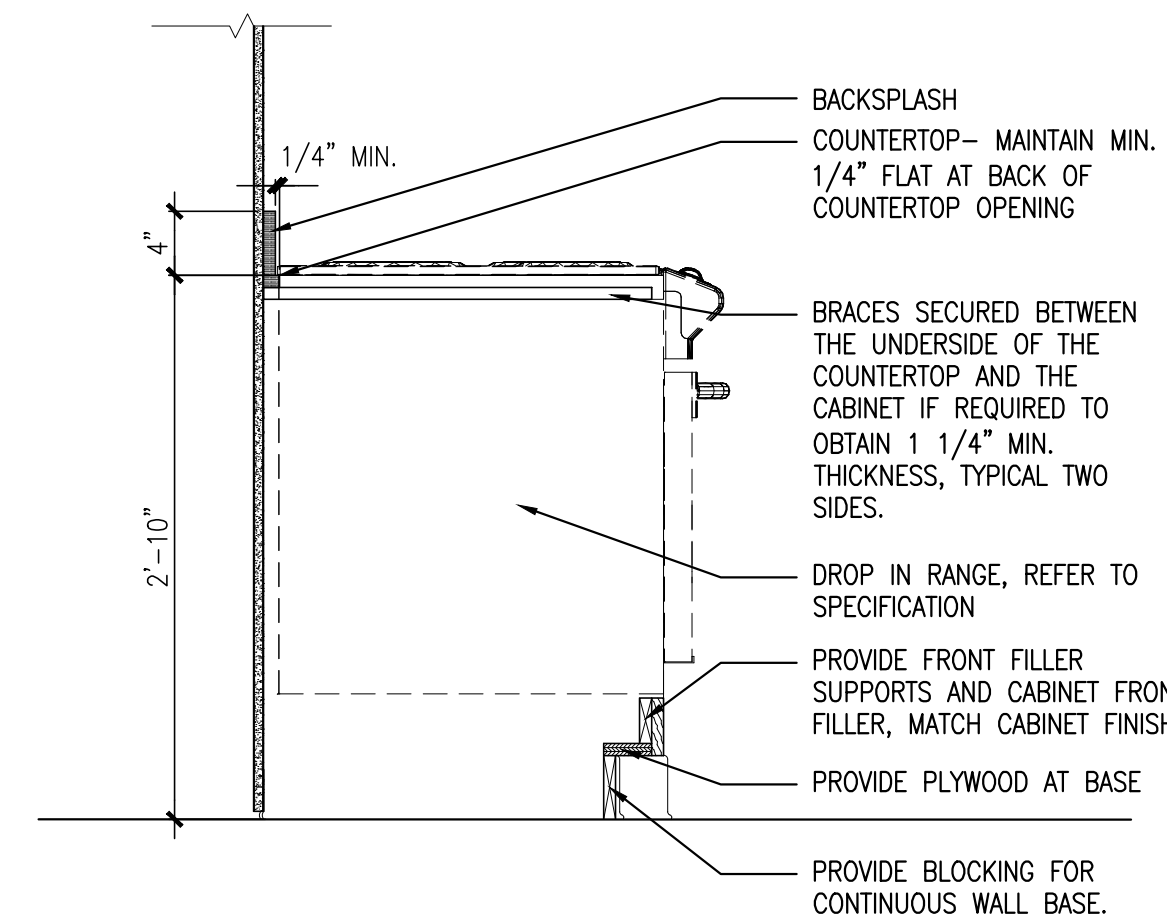
VERIFY OVERALL KITCHEN DIMENSIONS PRIOR TO PREPARING SHOP DRAWINGS.  
 PROVIDE FINISH FLOORING, WALL BASE AND FINISH WALL AT ALL REMOVABLE CABINETS.



ELEVATION 'B'

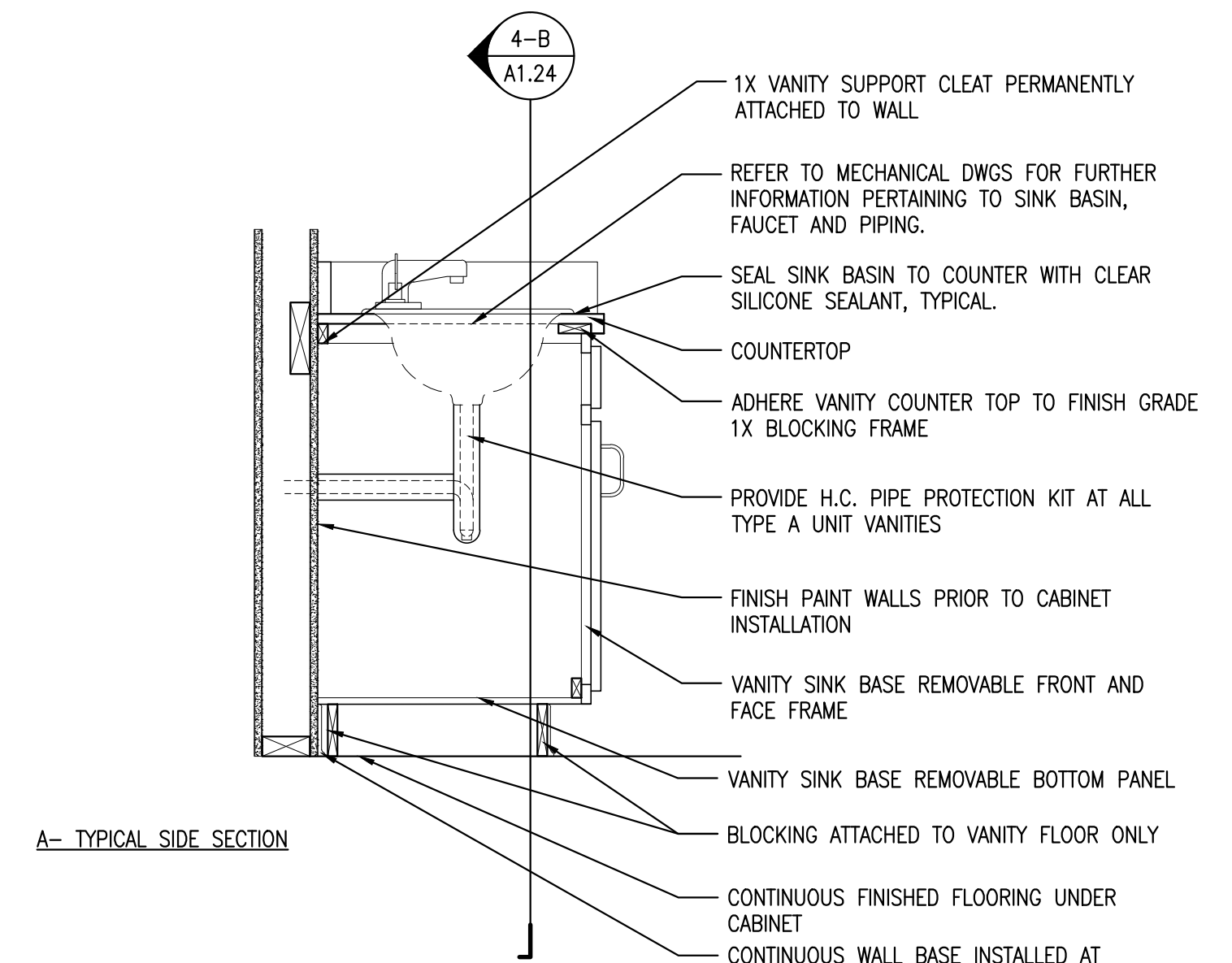


ELEVATION 'C'

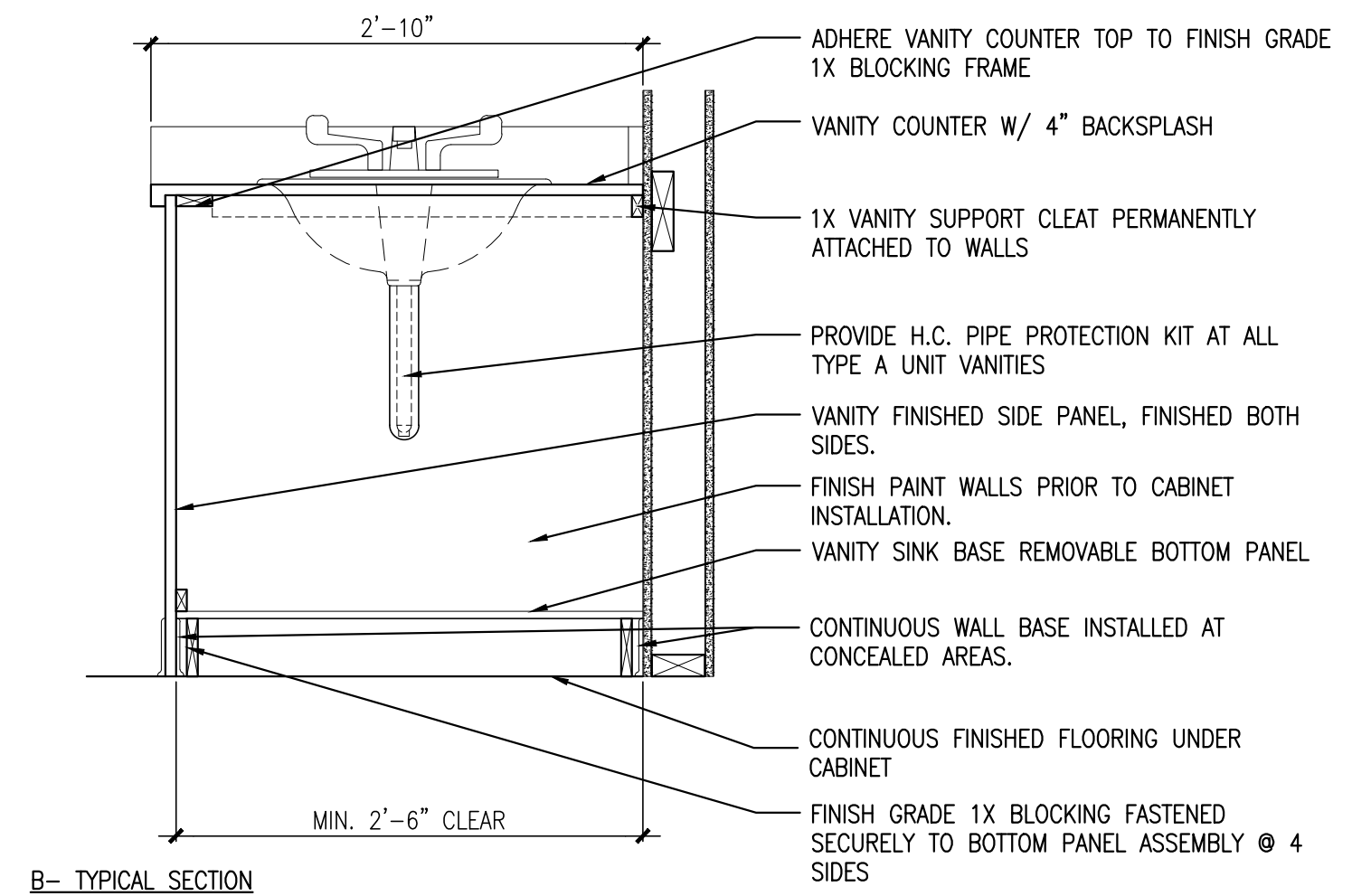


3 TYPICAL DROP IN RANGE DETAIL

REFERENCED FROM: ACCESSIBLE AND TYPE A UNITS-U.N.O. SCALE: 1" = 1'-0"



A- TYPICAL SIDE SECTION



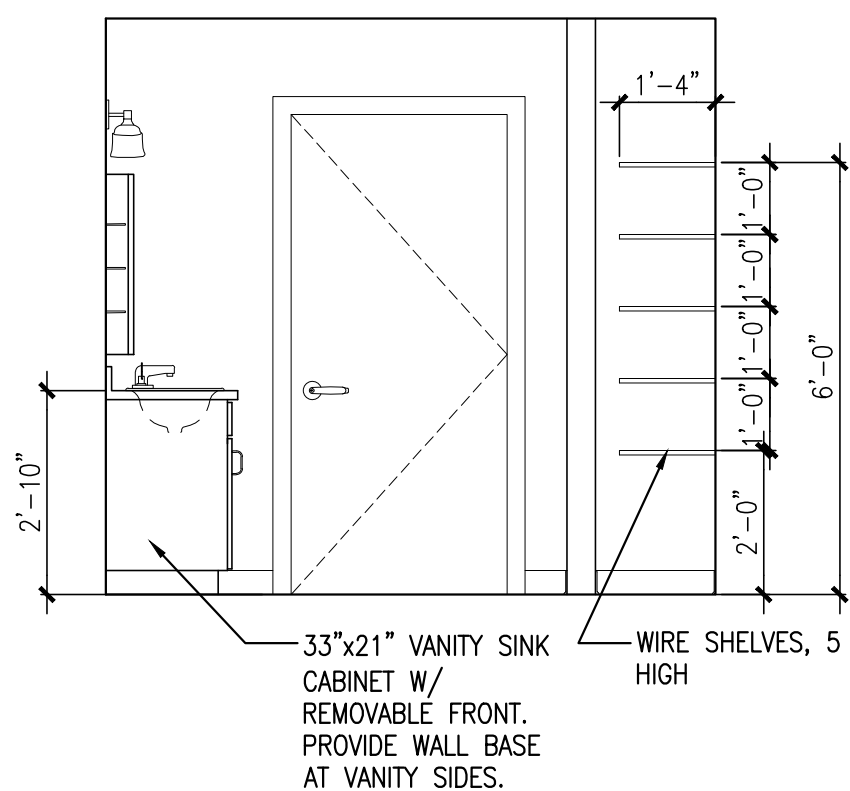
B- TYPICAL SECTION

1 KITCHEN ELEVATIONS

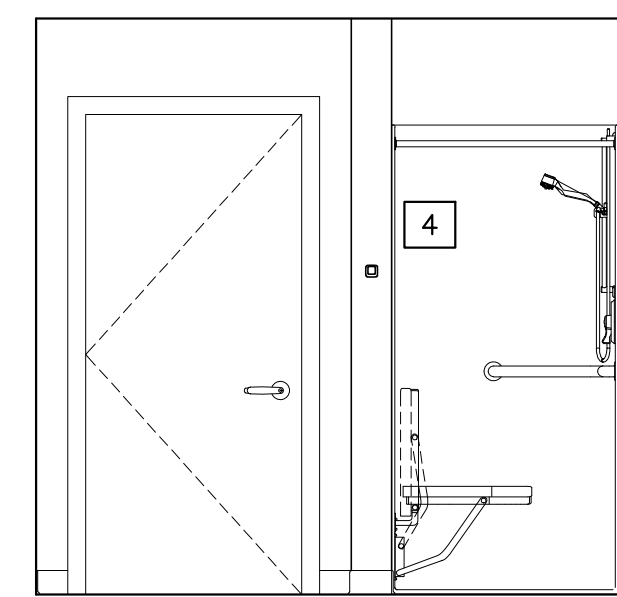
REFERENCED FROM: FLOOR PLANS

SCALE: 3/8" = 1'-0"

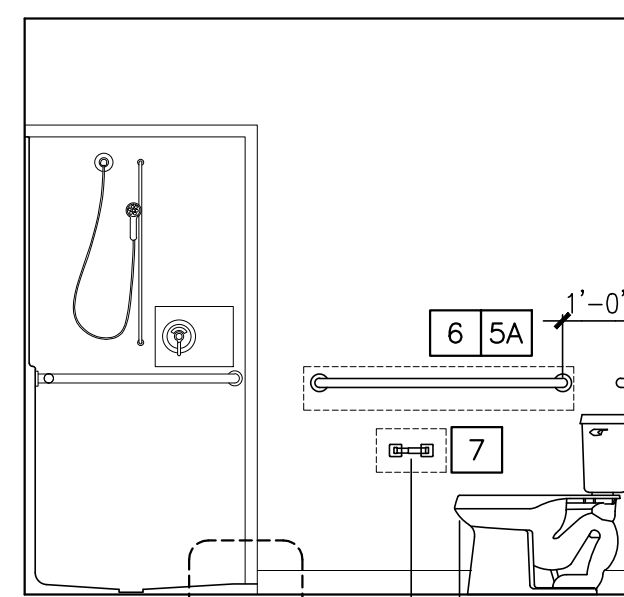
NOTE: REFER TO 3/A1.21 FOR BATHROOM ACCESSORY LEGEND AND NOTES.



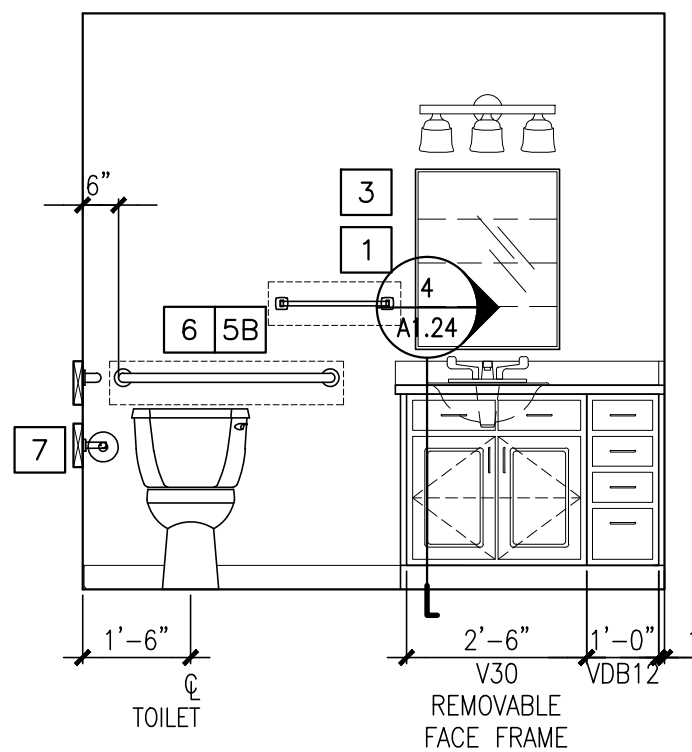
ELEVATION 'A'



ELEVATION 'B'



ELEVATION 'C'

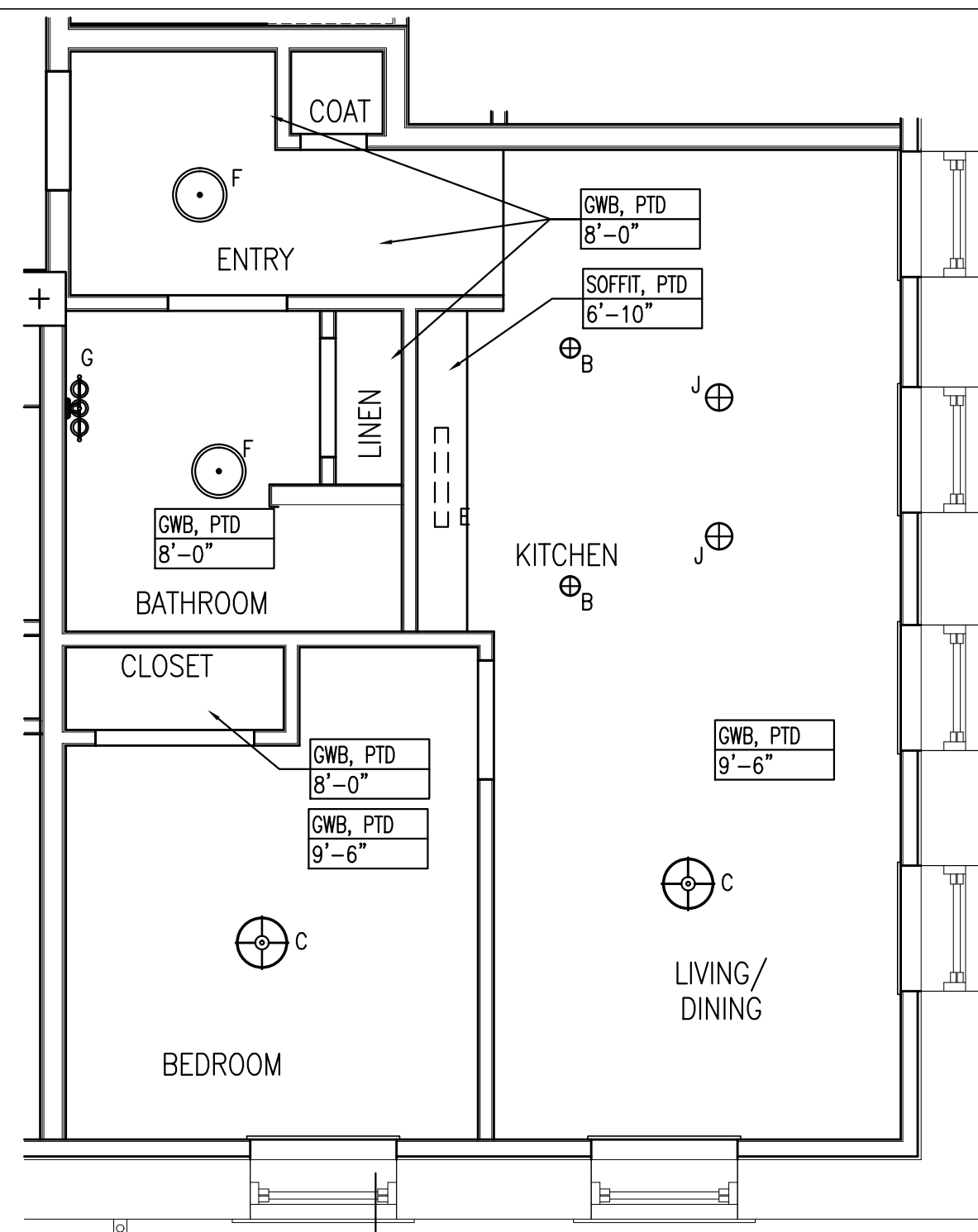


ELEVATION 'D'

3 BATHROOM ELEVATIONS

REFERENCED FROM: FLOOR PLANS

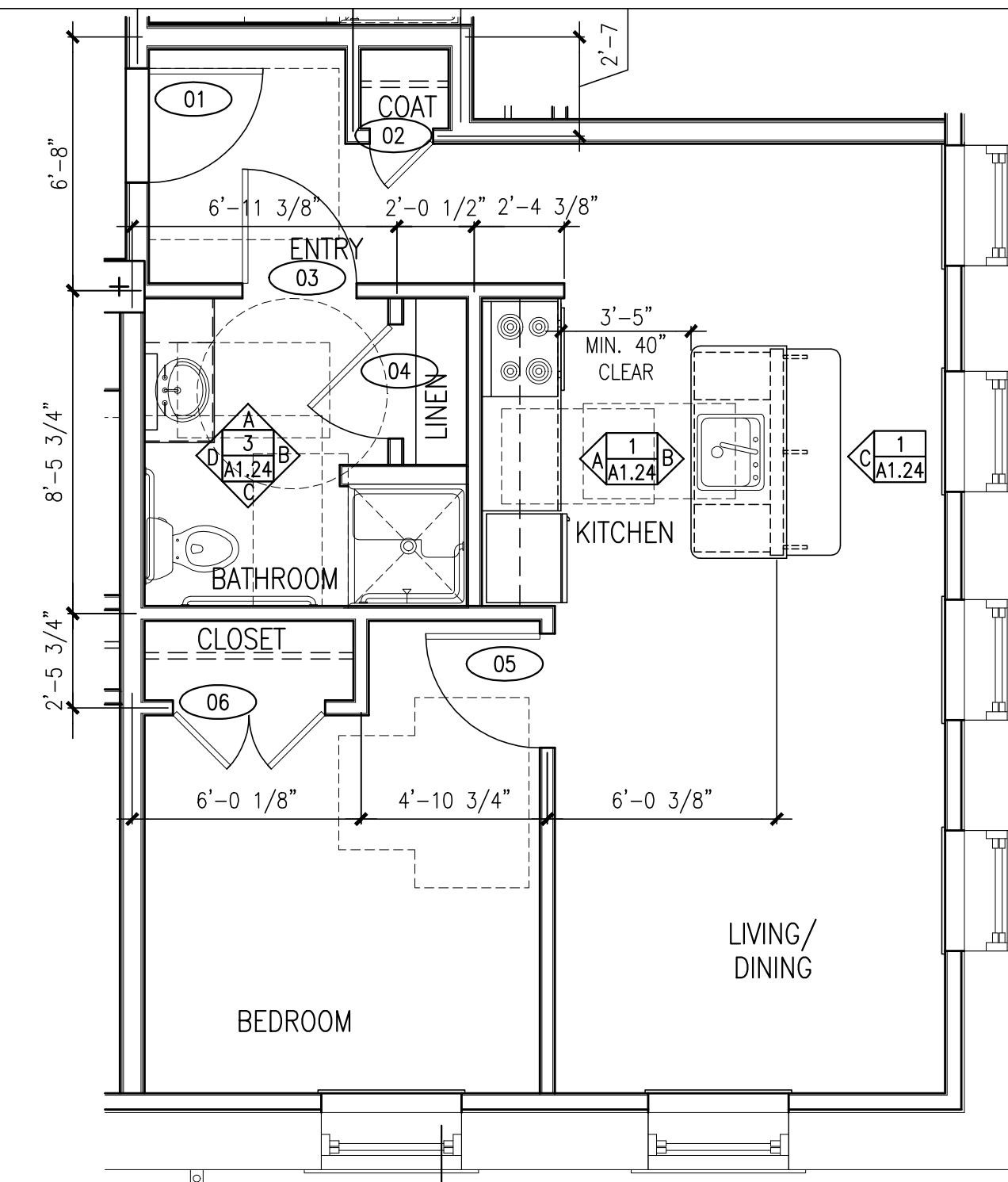
SCALE: 3/8" = 1'-0"



A UNIT TYPE 1A-2 - REFLECTED CEILING PLAN

REFERENCED FROM: UNIT 211

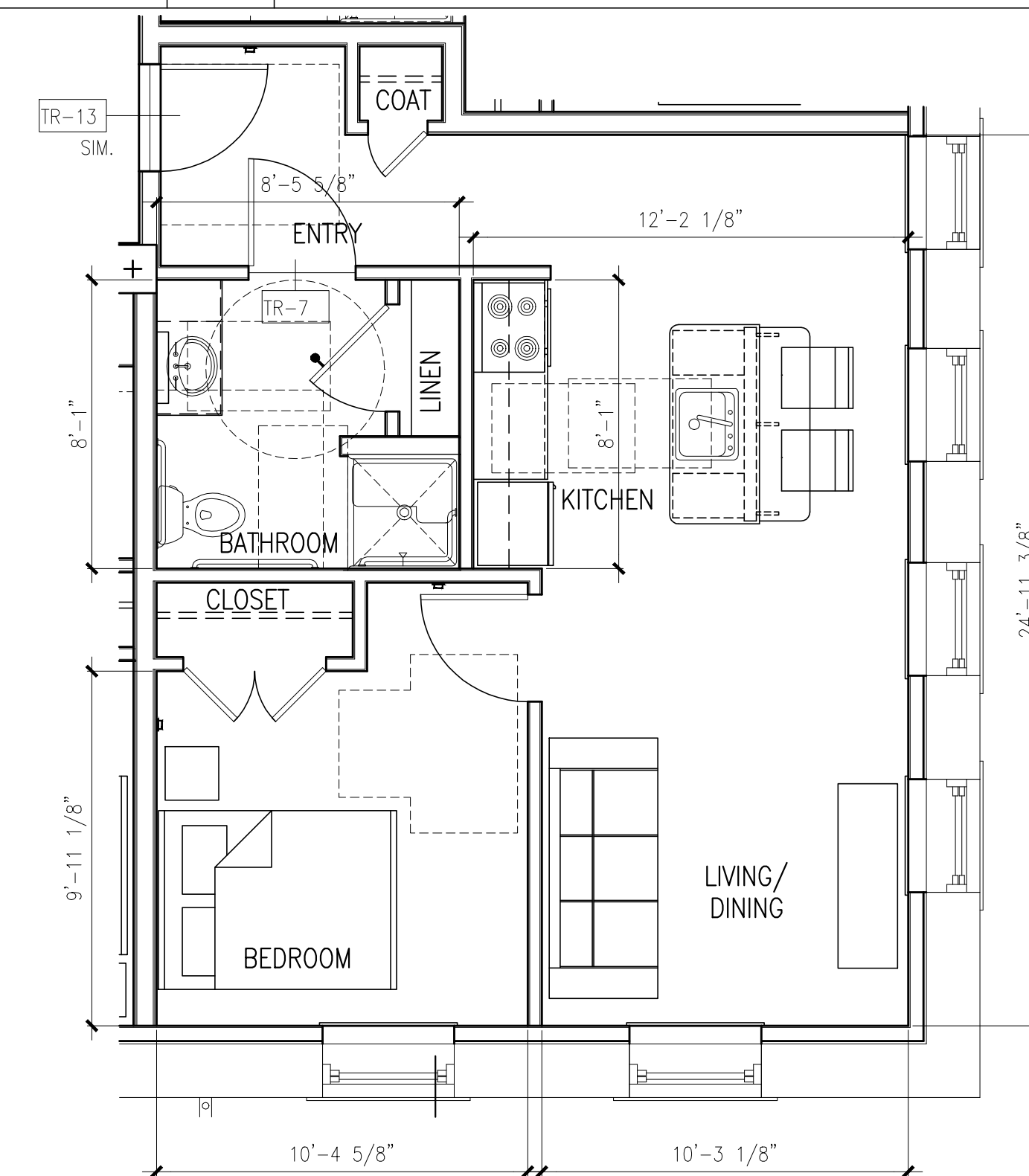
SCALE: 1/4" = 1'-0"



B UNIT TYPE 1A-2 - DIMENSIONAL PLAN

REFERENCED FROM: UNIT 211

SCALE: 1/4" = 1'-0"



C UNIT TYPE 1A-2 - LAYOUT FLOOR PLAN

REFERENCED FROM: UNIT 211

SCALE: 1/4" = 1'-0"

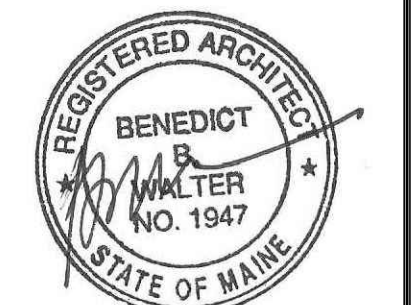


CWS Architects

Architecture  
 Space Planning  
 Value Design

434 Cumberland Avenue  
 Portland, ME 04101  
 Phone: (207)774-4441  
 Fax: (207)774-4016

www.CWSarch.com



Owner:

**Children's  
 Hospital Housing  
 Partners, LP**

309 Cumberland Ave.  
 Suite 203  
 Portland, Maine 04101

CONSTRUCTION MANAGER:

**WRIGHT-RYAN  
 CONSTRUCTION**

10 DANFORTH STREET  
 PORTLAND, ME 04101  
 TEL: (207) 773-3625

**ELM  
 TERRACE**

68 HIGH STREET  
 PORTLAND, MAINE

Project No: 09428

Drawing Title:

**TYPE 1A-2 FLOOR  
 PLANS, RCP, INT.  
 ELEVS**

Scale: AS NOTED

Date: ISSUED SEPTEMBER 8, 2011

Revisions:

- △ MAINE HOUSING CONCEPT SUBMISSION 02-01-2011
- △ HISTORIC PRESERVATION SUBMISSION 03-23-2011
- △ 50% MAINEHOUSING REVIEW 04-01-2011
- △ 90% MAINEHOUSING REVIEW 06-03-2011
- △ NPS SUBMISSION 07-01-2011
- △ ISSUED SEPTEMBER 8, 2011

Drawing Number:

**A1.24**