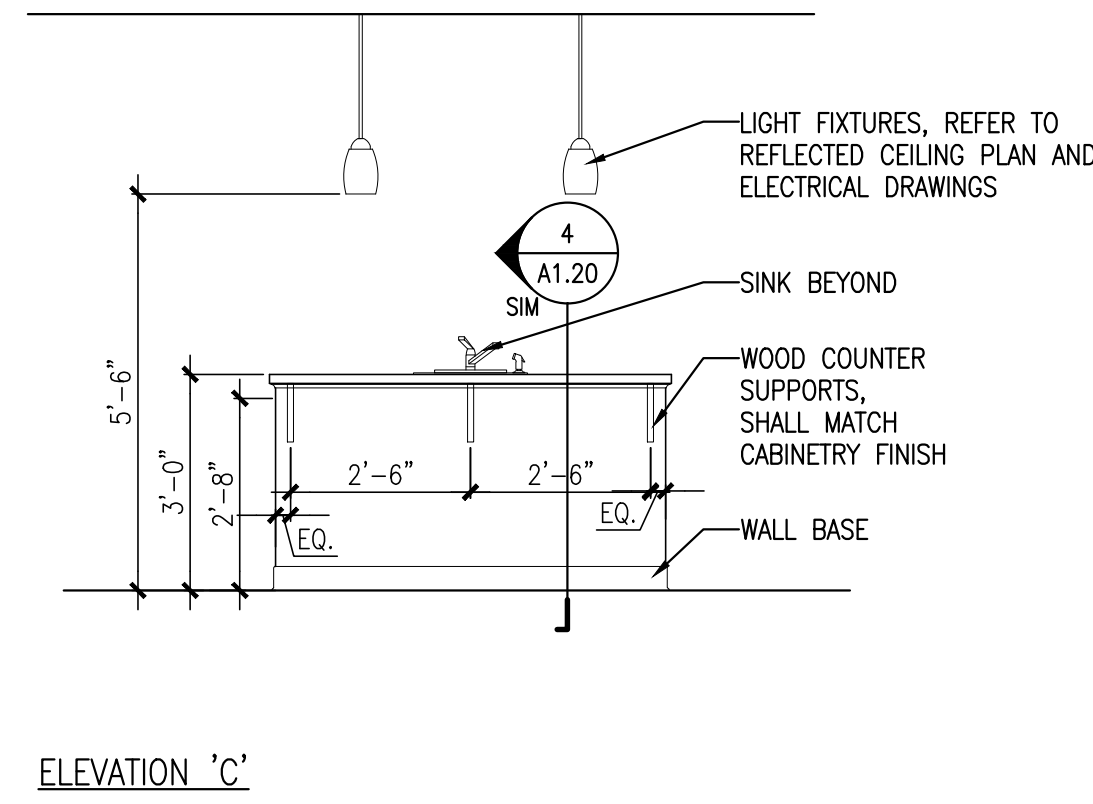
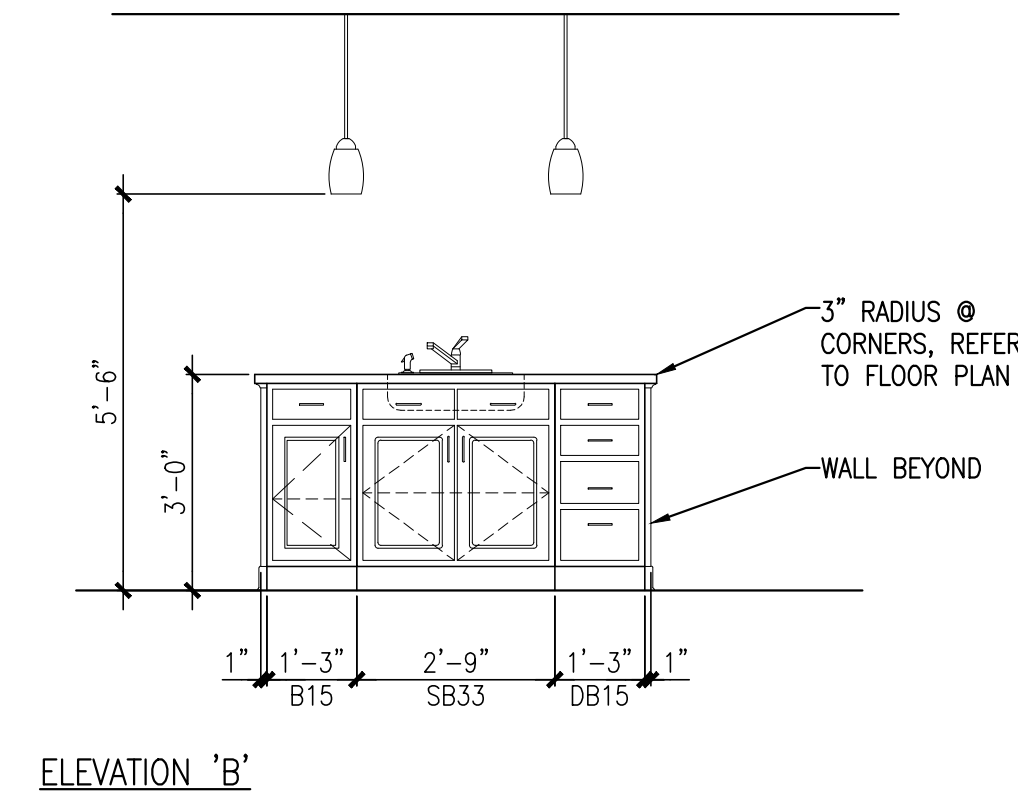
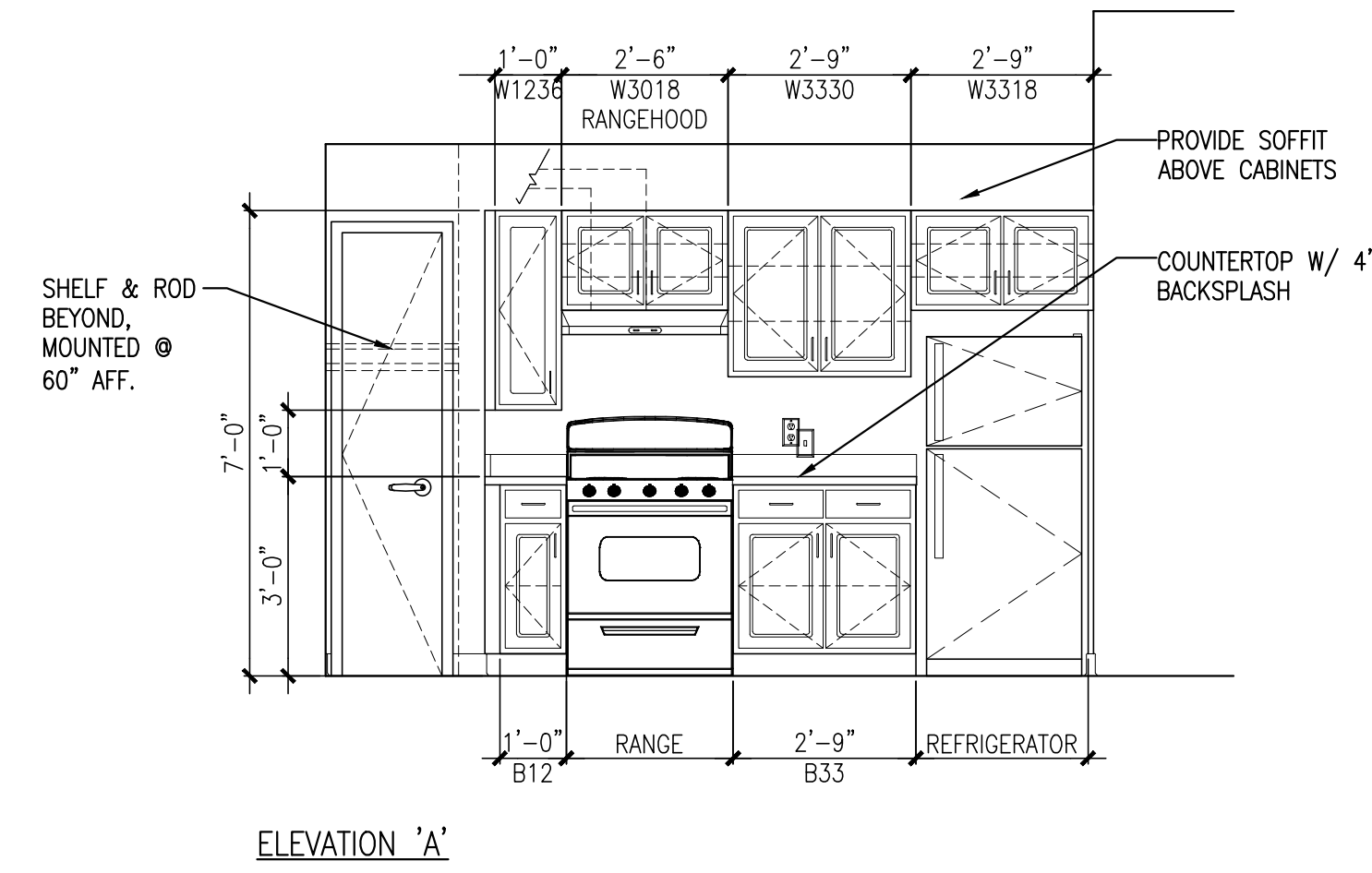


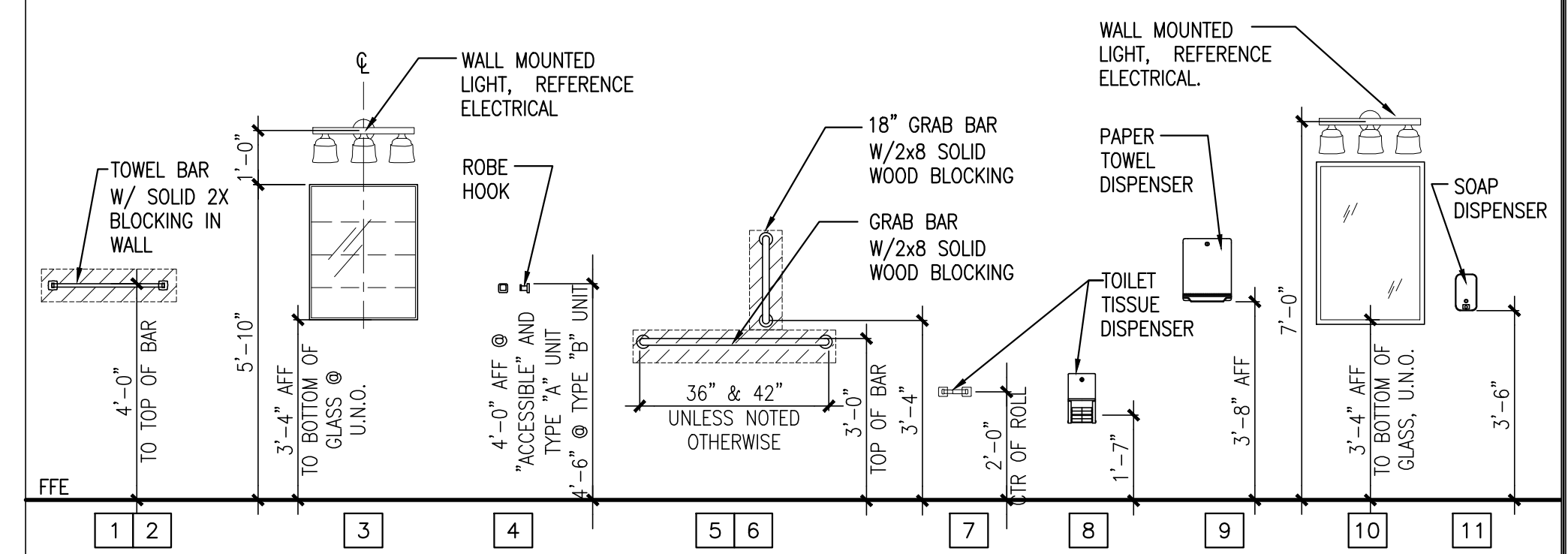
NOTES:
1. VERIFY OVERALL KITCHEN DIMENSIONS PRIOR TO PREPARING SHOP DRAWINGS.



1 KITCHEN ELEVATIONS

REFERENCED FROM: FLOOR PLANS

SCALE: 3/8" = 1'-0"



BATHROOM AND PUBLIC TOILET ROOM ACCESSORY LEGEND

- 1 18" TOWEL BAR, EXTRA-HEAVY-DUTY
- 2 24" TOWEL BAR, EXTRA-HEAVY-DUTY
- 3 SURFACE MOUNTED MEDICINE CABINET W/ MIRROR
- 4 ROBE HOOK, SINGLE
- 5A 42" GRAB BAR, STAINLESS STEEL W/ CONCEALED MOUNTING, NOTE 9
- 5B 36" GRAB BAR, STAINLESS STEEL W/ CONCEALED MOUNTING NOTE 9
- 5C 18" GRAB BAR, STAINLESS STEEL W/ CONCEALED MOUNTING NOTE 9
- 6 GRAB BAR ANCHORS
- 7 TOILET TISSUE DISPENSER, SINGLE-ROLL, SURFACE MOUNTED
- 8 TOILET TISSUE DISPENSER, MULTI-ROLL, SURFACE MOUNTED
- 9 PAPER TOWEL DISPENSER
- 10 18"x36" MIRROR WITH STAINLESS STEEL CHANNEL FRAME
- 11 SOAP DISPENSER, SURFACE MOUNTED

GENERAL NOTES:

1. REFERENCE SPECIFICATIONS FOR ADDITIONAL INFORMATION.
2. CONTRACTOR SHALL PROVIDE SOLID BLOCKING AS REQUIRED FOR ALL TOILET ACCESSORIES AND SHOWER GRAB BARS.
3. ALL ROOMS WITH SHOWERS TO HAVE MUD SET SLOPED FLOORS TO FLOOR DRAINS.
4. SINK FIXTURES DIFFER, REFERENCE PLUMBING DRAWINGS.
5. PROVIDE FINISH FLOORING UNDER ALL UNDER ALL BASE CABINETS, REMOVABLE SINK CABINETS FRONT AND REMOVABLE PANEL AT SINK AND OPEN WORK SURFACE.
6. PROVIDE FINISH WALL BEHIND ALL REMOVABLE CABINETS AND SINK ENCLOSURES.
7. INSTALL REMOVABLE BASE CABINETS AND SINK ENCLOSURES WITH BRASS SCREWS FOR EASY REMOVAL.
8. PROVIDE INSULATED PIPES BENEATH ALL SINK CABINETS WITH REMOVABLE FRONTS AND SINK ENCLOSURES.
9. PROVIDE BLOCKING ONLY FOR GRAB BARS IN TYPE B UNITS.
10. VERIFY DOOR STOP/BUMPER LOCATIONS IN FIELD PRIOR TO STOP/BUMPER INSTALLATION, TYPICAL.
11. REFER TO DRAWING 4/A9.31 FOR TYPICAL FLOOR DRAIN DETAIL.

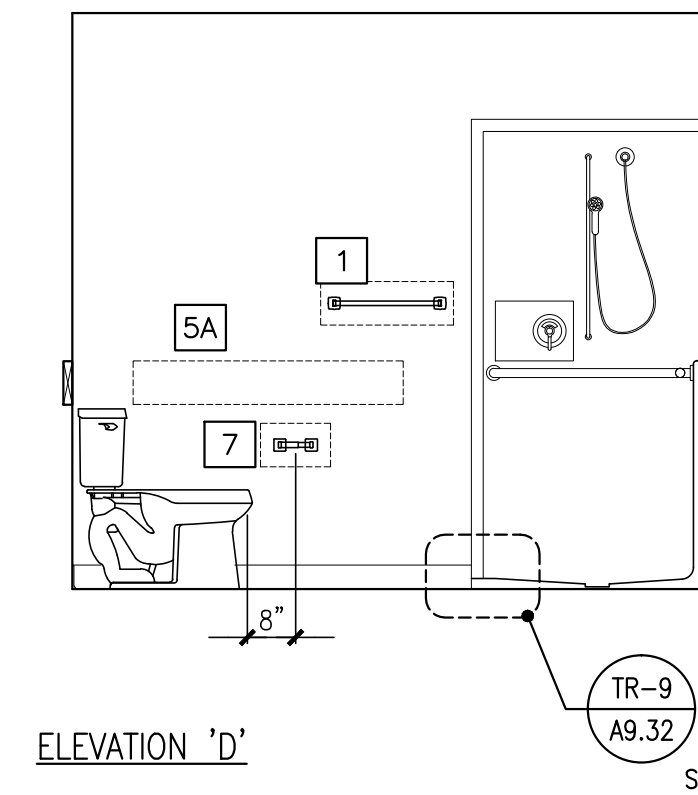
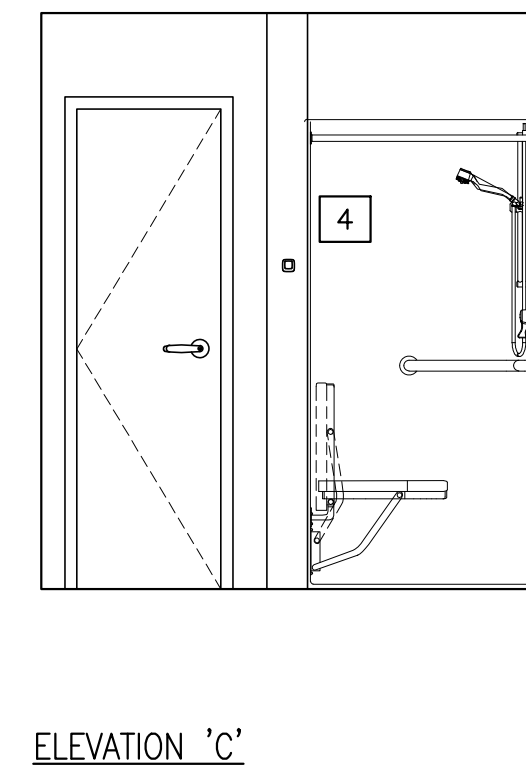
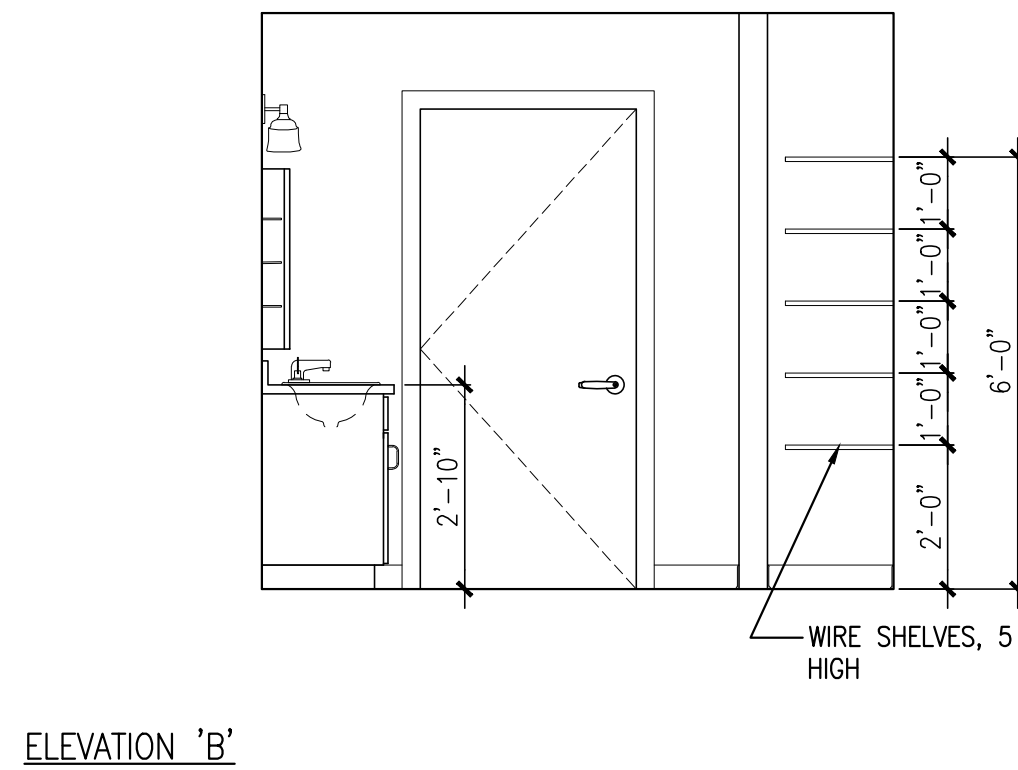
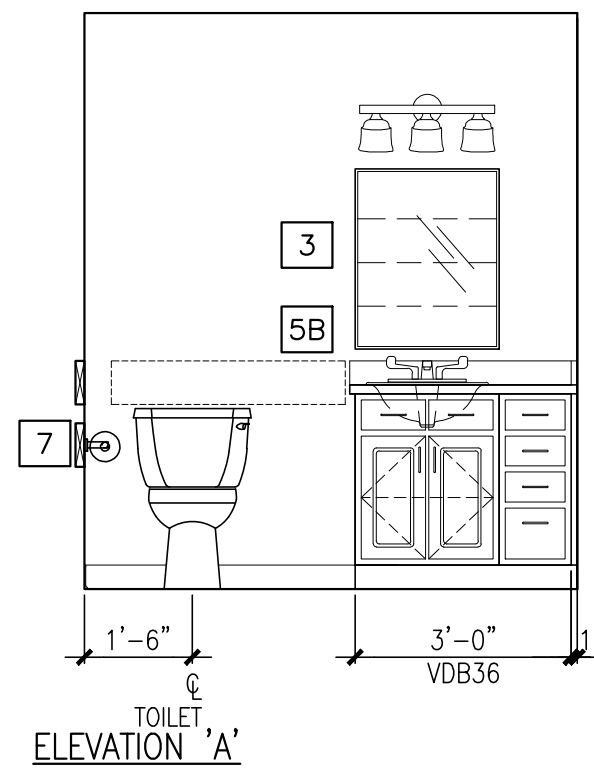
DOOR STOP SYMBOLS LEGEND

- WALL MOUNTED STOP
- DOOR MOUNTED ROLLER BUMPER

2 BATHROOM ELEVATIONS

REFERENCED FROM: FLOOR PLANS

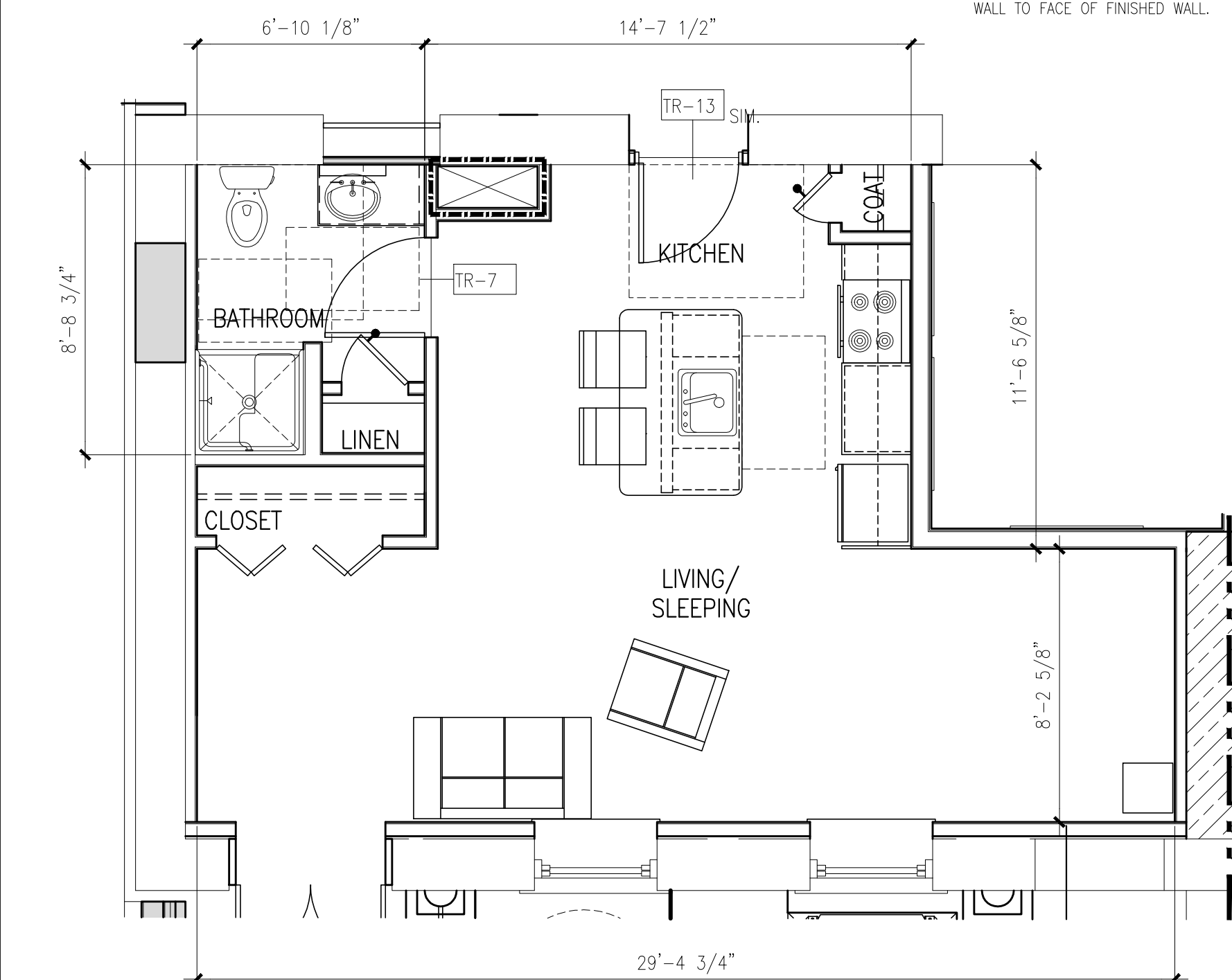
SCALE: 3/8" = 1'-0"



2 BATHROOM ACCESSORY LEGEND AND NOTES

REFERENCED FROM: BATHROOM ELEVATIONS

NOTE:
1. REFER TO A9.32 FOR TRANSITION DETAILS (TR)
2. ROOM DIMENSIONS AND SQUARE FOOTAGES ARE INFORMATIONAL ONLY AND SHALL NOT BE USED FOR CONSTRUCTION PURPOSES.
3. ROOM DIMENSIONS ARE FROM FACE OF FINISH WALL TO FACE OF FINISHED WALL.



A UNIT TYPE OB-1 - REFLECTED CEILING PLAN

REFERENCED FROM: UNIT 107, 207

SCALE: 1/4" = 1'-0"

B UNIT TYPE OB-1 - DIMENSIONAL PLAN

REFERENCED FROM: UNIT 107, 207

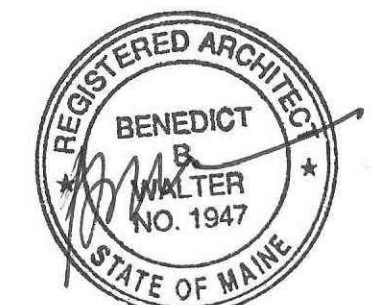
SCALE: 1/4" = 1'-0"

C UNIT TYPE OB-1 - LAYOUT FLOOR PLAN

REFERENCED FROM: UNIT 107, 207

SCALE: 1/4" = 1'-0"

CWS Architects
Architecture
Space Planning
Value Design
434 Cumberland Avenue
Portland, ME 04101
Phone: (207)774-4441
Fax: (207)774-4016
www.CWSarch.com



Owner:
Children's Hospital Housing Partners, LP
309 Cumberland Ave.
Suite 203
Portland, Maine 04101
CONSTRUCTION MANAGER:
WRIGHT-RYAN CONSTRUCTION
10 DANFORTH STREET
PORTLAND, ME 04101
TEL: (207) 773-3625

ELM TERRACE
68 HIGH STREET
PORTLAND, MAINE

Project No: 09428

Drawing Title:

TYPE OB-1 FLOOR PLANS, RCP, INT. ELEVS

Scale: AS NOTED

Date: ISSUED SEPTEMBER 8, 2011

Revisions:

- MAINE HOUSING CONCEPT SUBMISSION 02-01-2011
- HISTORIC PRESERVATION SUBMISSION 03-23-2011
- 50% MAINEHOUSING REVIEW 04-01-2011
- 90% MAINEHOUSING REVIEW 06-03-2011
- NPS SUBMISSION 07-01-2011
- ISSUED SEPTEMBER 8, 2011

Drawing Number:

A1.21