

Owner:

**Children's
Hospital Housing
Partners, LP**

309 Cumberland Ave.
Suite 203
Portland, Maine 04101

CONSTRUCTION MANAGER:

**WRIGHT-RYAN
CONSTRUCTION**

10 DANFORTH STREET
PORTLAND, ME 04101
TEL: (207) 773-3625

**ELM
TERRACE**

68 HIGH STREET
PORTLAND, MAINE

Project No: 09428

Drawing Title:

**ENLARGED ROOF
PLAN - NEW
ADDITION**

Scale: AS NOTED

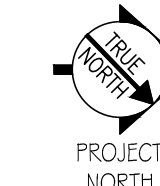
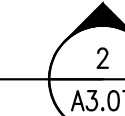
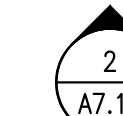
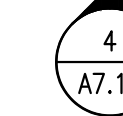
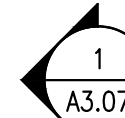
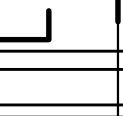
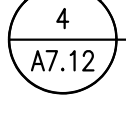
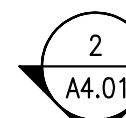
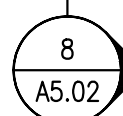
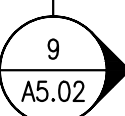
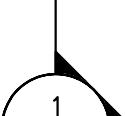
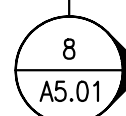
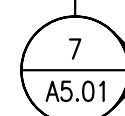
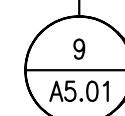
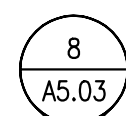
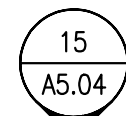
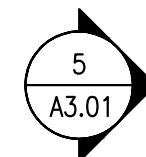
Date: ISSUED SEPTEMBER 8, 2011

Revisions:

- △ MAINE HOUSING CONCEPT SUBMISSION 02-01-2011
- △ HISTORIC PRESERVATION SUBMISSION 03-23-2011
- △ 50% MAINEHOUSING REVIEW 04-01-2011
- △ 90% MAINEHOUSING REVIEW 06-03-2011
- △ NPS SUBMISSION 07-01-2011
- △ ISSUED SEPTEMBER 8, 2011

Drawing Number:

A1.18



MATCH LINE IS ALONG EXTERIOR FACE OF EXISTING BUILDING.
ENLARGED PLAN = A1.18
ENLARGED PLAN = A1.19

WALL PARTITION LEGEND	
	= EXISTING WALL/PARTITION ASSEMBLY TO REMAIN
	= EXISTING HISTORICAL SIGNIFICANT WALL/PARTITION ASSEMBLY TO REMAIN AS IS. • ANY WORK IMPACTING THESE WALLS/PARTITIONS MUST BE AUTHORIZED BY OWNER/ARCHITECT AND HISTORICAL REVIEW TEAM
	= EXISTING WALL/PARTITION TO BE REMOVED. • OTHER DASHED ITEMS WITHIN REMOVALS PLANS ARE ALSO TO BE REMOVED. • REFERENCE REMOVAL PLANS AND NOTES.
	= NEW WALL/PARTITION ASSEMBLY. • REFERENCE PARTITION SCHEDULE
	= INDICATES FIRE RATED WALL/PARTITION ASSEMBLY. • REFERENCE PARTITION SCHEDULE

SCALE: 3/16" = 1'-0"

