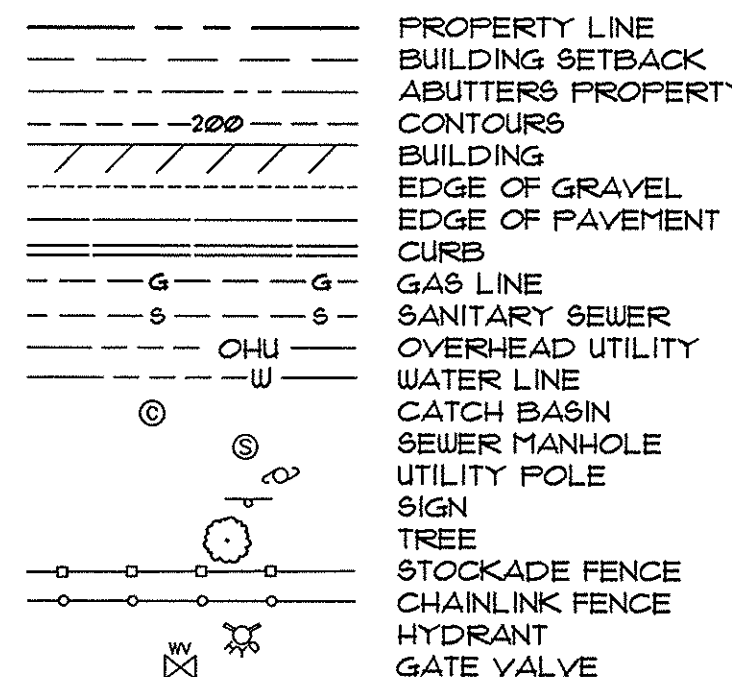
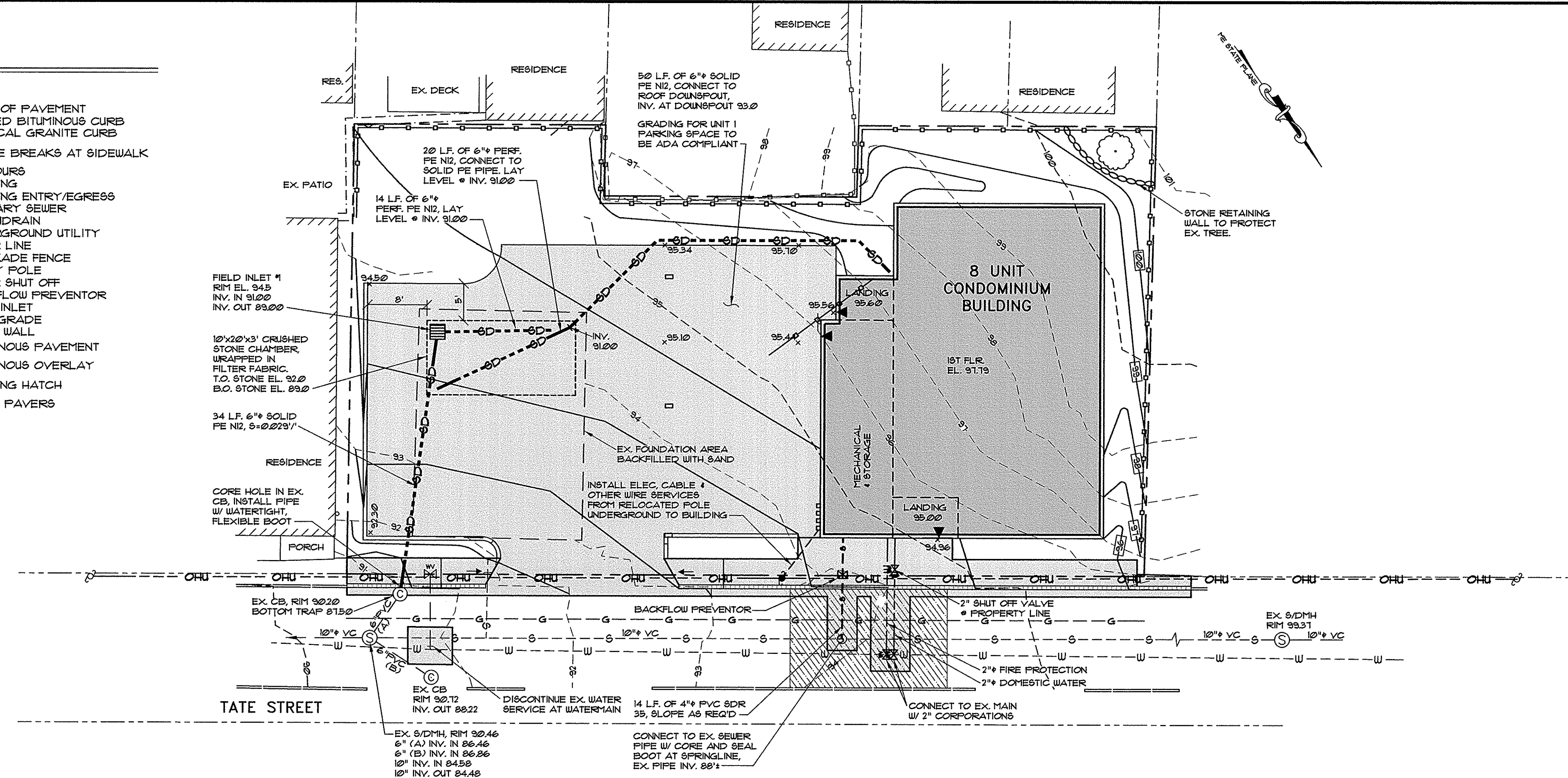
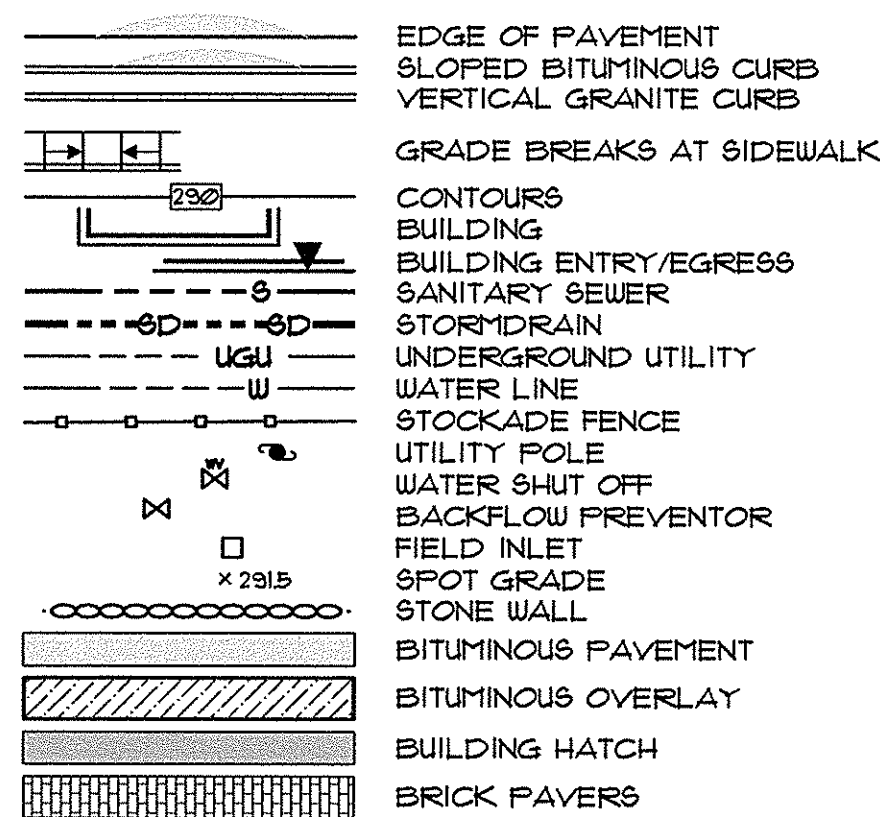


**LEGEND**

**EXISTING**

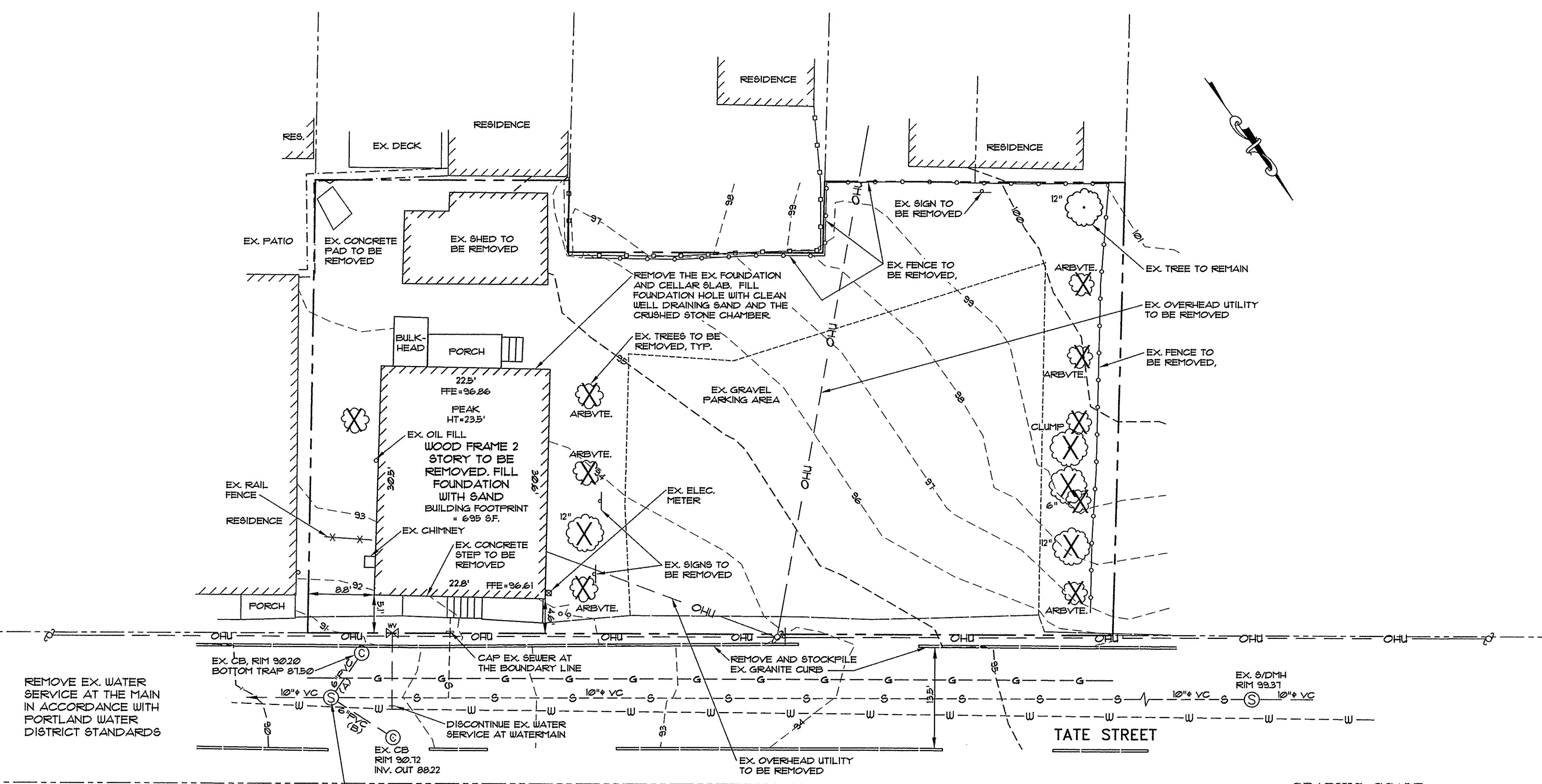


**PROPOSED**



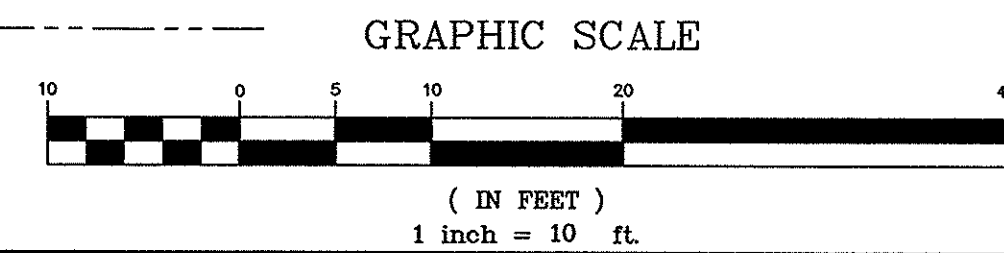
**GRADING & UTILITIES PLAN**

SCALE: 1"=10'

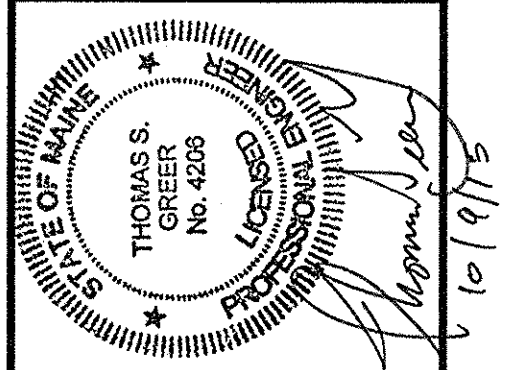


**EXISTING CONDITIONS & DEMOLITION PLAN**

SCALE: 1"=10'



**PINKHAM & GREER**  
CIVIL ENGINEERS  
28 WILLOW AVE. PORTLAND, ME 04103  
TEL: 877-676-6242 FAX: 207-761-1645



REV.	DATE	DESCRIPTION

DEVELOPER: WEST PORT PARTNERSHIP, LLC  
TATE STREET PARTNERSHIP, PORTLAND  
17 CHESTNUT STREET, PORTLAND

SCALE: AS SHOWN  
DATE: OCTOBER 9, 2015  
PROJECT: 15133

DRN BY: JDC/RS  
DESIGN BY: TSG  
CHK BY: BCG

**WEST PORT LOFTS CONDOMINIUM**  
22-28 TATE STREET  
PORTLAND, MAINE

**EXISTING CONDITION & DEMOLITION PLAN, GRADING & UTILITIES PLAN**

**C1.3**