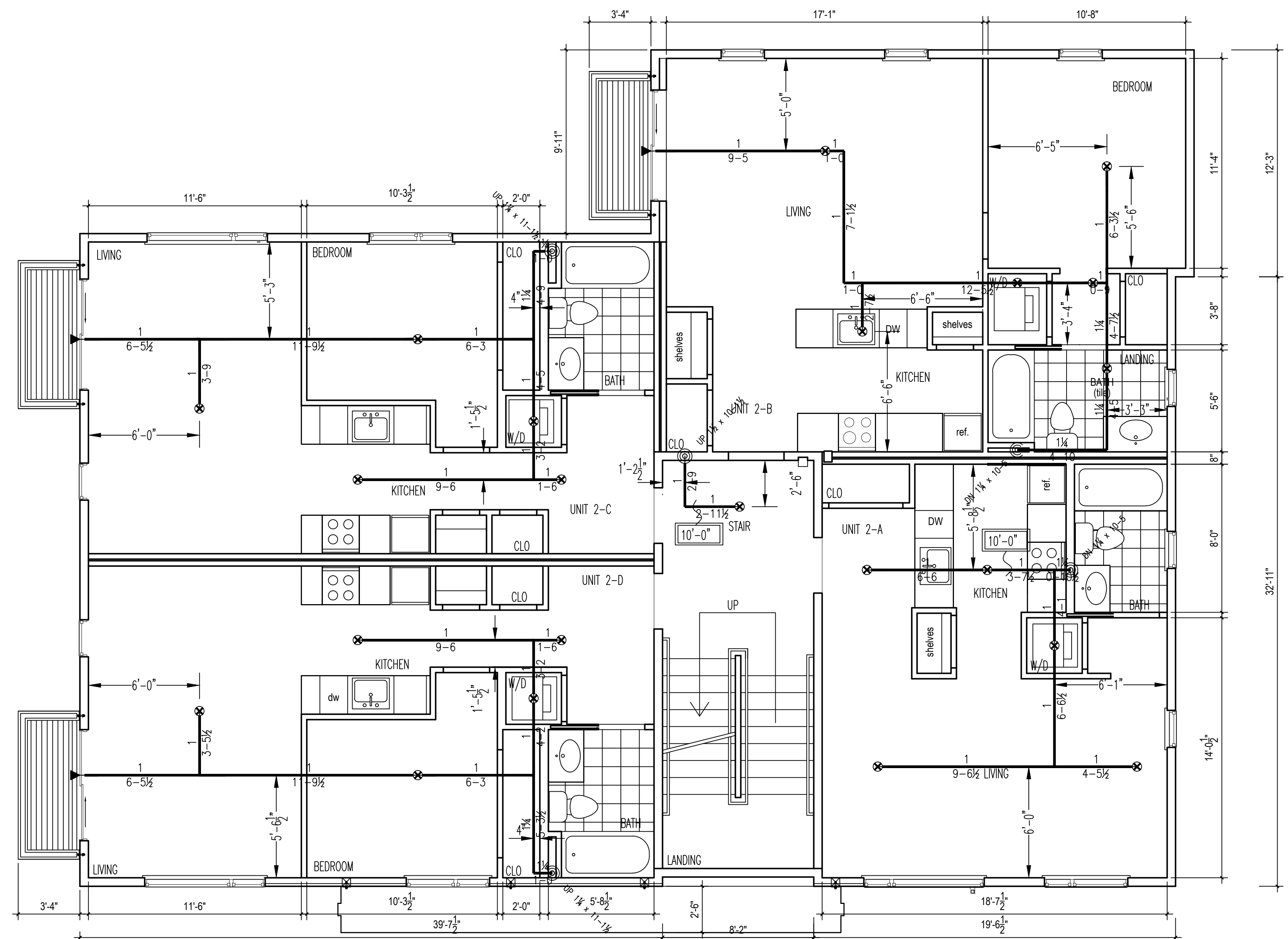


THIRD FLOOR PLAN
SCALE 1/4"=1'-0" FF ELEV 118'-7 1/2"

CALC FILE C1349 AREA-1
HYDRAULIC DATA:
BASIS OF DESIGN NFPA 13R
DENSITY .05
AREA OF COVERAGE 3RD FLOOR 4 HEADS
SPRINKLERS TOTAL ORIFICE TEMP 4 1/2" 155"
SYSTEM DEMAND AT BASE OF RISER:
PRESSURE 47.127
FLOW 154.702
HOSE 100
SAFETY MARGIN: 12.69 UNDER THE WATER CURVE



SECOND FLOOR PLAN
SCALE 1/4"=1'-0" FF ELEV 108'-2 1/2"

HEAD LEGEND

- 8 RELIABLE MODEL F3QR DRY PENDENT
155 QUICK RESPONSE, STANDARD COVERAGE
WHITE K=5.6, 1" NPT, SIN R5714
- 59 RELIABLE MODEL F1RES49 RECESSED
155" QUICK RESPONSE, STANDARD COVERAGE
K=4.9, 1 1/2" NPT, SIN R3516
- 1 RELIABLE MODEL F1FR56 BRASS UPRIGHT
155" QUICK RESPONSE, STANDARD COVERAGE
K=5.6, 1 1/2" NPT, SIN RA1425
- 2 RELIABLE MODEL F1FR56 RECESS
155" QUICK RESPONSE, STANDARD COVERAGE
K=5.6, 1 1/2" NPT, SIN RA1414
- 3 RELIABLE MODEL F13QR DRY HSW
155" QUICK RESPONSE, STANDARD COVERAGE
K=5.6, 1" NPT, SIN R5734

DEAN & ALLYN, INC.
FIRE PROTECTION • SPECIAL HAZARD
116 LEWISTON ROAD, GRAY, MAINE 04039
(207)657-5646 FAX:(207)657-5647

3 1/8" 0 6 12 SCALE 3/32"=1'-0"	2 1 0 4 8 SCALE 1/8"=1'-0"	1 1/2 0 3 6 SCALE 3/16"=1'-0"	1 1/4 0 2 4 SCALE 1/4"=1'-0"	DANA A. STEWART NICET IV - #064544	DRAWING TITLE: DETAILS & 1ST FLOOR	SUBMITTAL
				APPROVED BY	DATE	
				SURVEYED BY	SEC XX/XX/XX	NO. OF SPRINKLERS SHOWN ON THIS SHEET
				DRAWN BY	SEC 7/18/16	25
				CHECKED BY	TC 7/18/16	NO. OF SPRINKLERS ON JOB
				AT DEAN & ALLYN, INC		73
				SCALE 1/4"=1'-0" U/N		CONTRACT NO.
				SHEET NO. 2 OF 2		C161349
				REVISIONS	DATE	