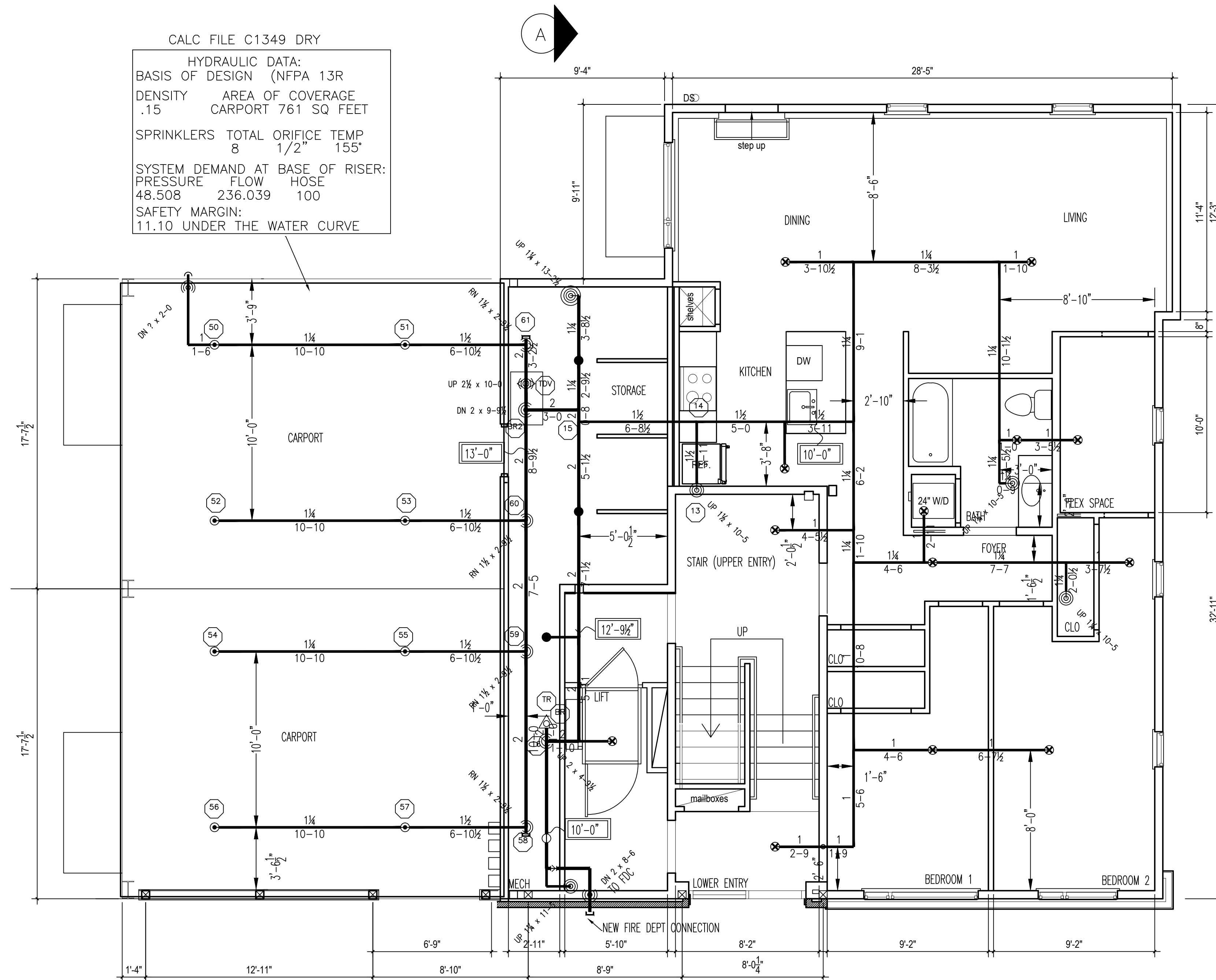
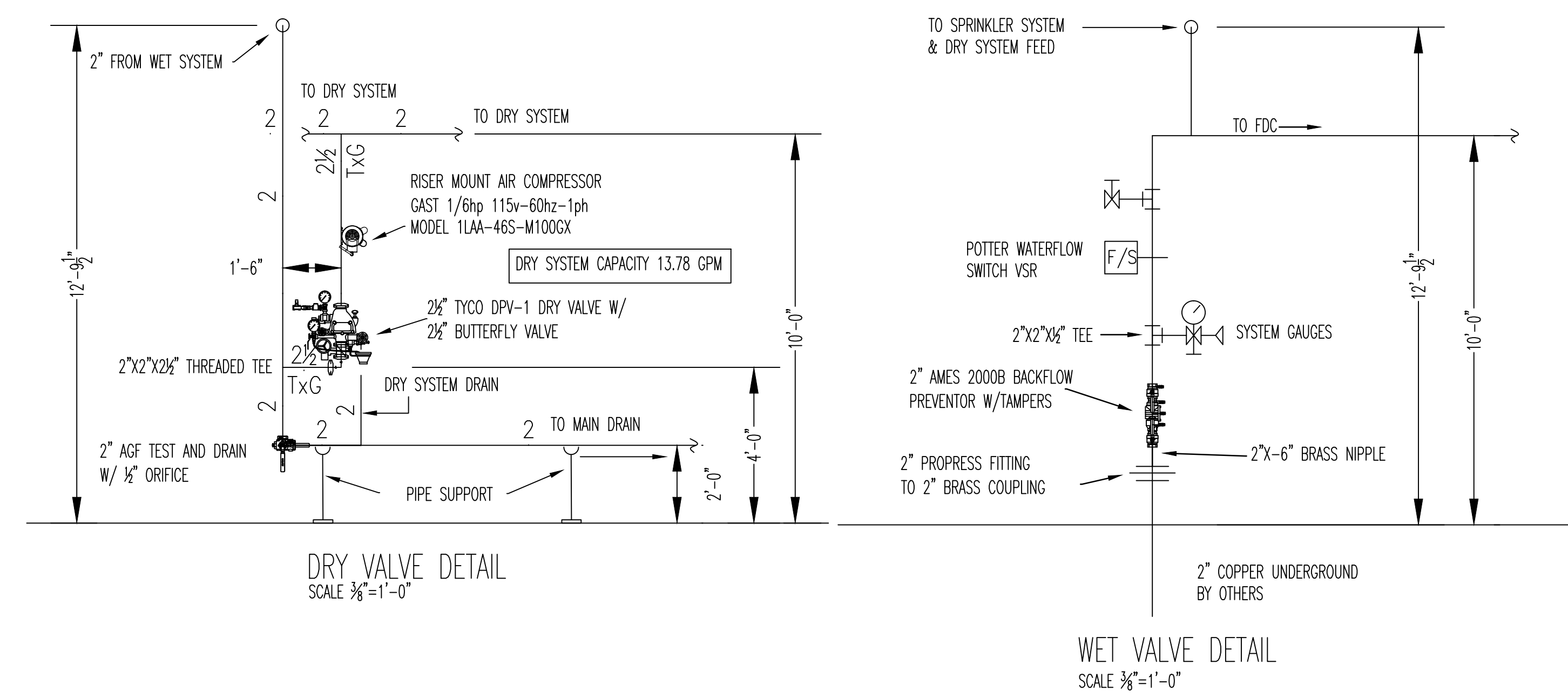


CALC FILE C1349 DRY
 HYDRAULIC DATA:
 BASIS OF DESIGN (NFPA 13R)
 DENSITY .15 AREA OF COVERAGE
 CARPORT 761 SQ FEET
 SPRINKLERS TOTAL ORIFICE TEMP
 8 1/2" 155°
 SYSTEM DEMAND AT BASE OF RISER:
 PRESSURE FLOW HOSE
 48.508 236.039 100
 SAFETY MARGIN:
 11.10 UNDER THE WATER CURVE

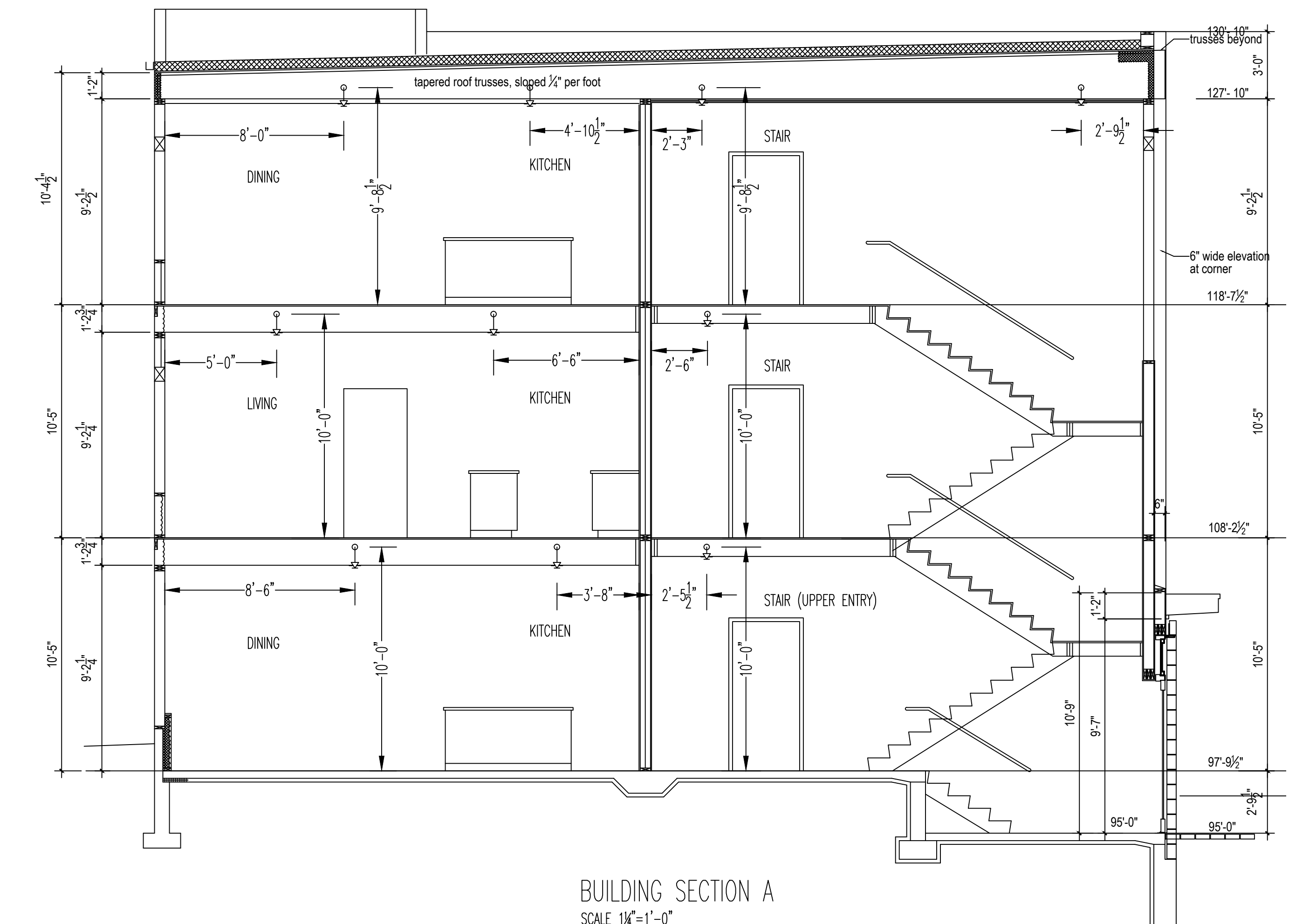


FIRST FLOOR PLAN
 SCALE 1/4"=1'-0" FF ELEV 98'-9 1/2"



DRY VALVE DETAIL
 SCALE 3/8"=1'-0"

WET VALVE DETAIL
 SCALE 3/8"=1'-0"



BUILDING SECTION A
 SCALE 1/4"=1'-0"

HEAD LEGEND

- RELIABLE MODEL F3QR DRY PENDENT
 QUICK RESPONSE, STANDARD COVERAGE
 WHITE K=5.6, 1" NPT, SIN R5714
- RELIABLE MODEL F1RES49 RECESSED
 QUICK RESPONSE, STANDARD COVERAGE
 K=4.9, 1 1/2" NPT, SIN R3516
- RELIABLE MODEL F1FR56 BRASS UPRIGHT
 QUICK RESPONSE, STANDARD COVERAGE
 K=5.6, 1 1/2" NPT, SIN RA1425
- RELIABLE MODEL F1FR56 RECESS
 QUICK RESPONSE, STANDARD COVERAGE
 K=5.6, 1 1/2" NPT, SIN RA1414
- RELIABLE MODEL F13QR DRY HSW
 QUICK RESPONSE, STANDARD COVERAGE
 K=5.6, 1" NPT, SIN R5734

SCOPE OF WORK

DESIGN AND INSTALL COMPLETE NEW WET AND DRY FIRE SPRINKLER SYSTEM THROUGHOUT ENTIRE BUILDING. SYSTEM TO BE FED FROM NEW COPPER UNDERGROUND TIED INTO CITY SUPPLY. BUILDING IS TO BE INSTALLED, CALCULATED, AND DESIGNED IN ACCORDANCE WITH NFPA-13R, AND APPROVED BY THE AUTHORITY HAVING JURISDICTION, CITY OF PORTLAND MAINE.

SYSTEM CLASSIFICATION

NEW DRY PIPE SYSTEM OF AUTOMATIC SPRINKLERS IN NEW CARPORT FED FROM WET SYSTEM.
 NEW WET PIPE SYSTEM OF AUTOMATIC SPRINKLERS THROUGHOUT ALL AREAS OF BUILDING. RESIDENTIAL SPRINKLERS COVERING ALL LIVING SPACES WITH THE EXCEPTION OF CLOSETS UNDER 245QFT AND BATHROOMS UNDER 555QFT AS STATED IN NFPA 13R. BOTH SYSTEMS DESIGNED IN ACCORDANCE WITH NFPA-13R. OWNER TO PROVIDE SUFFICIENT HEAT NO LESS THAN 40° TO ALL AREAS OF THE BUILDING CONTAINING WET SPRINKLER PIPING.

SYMBOL LEGEND

- DRY PENDENT ON BRANCH LINE
- RESIDENTIAL RECESSED PENDENT ON BRANCH LINE
- UPRIGHT HEAD ON BRANCH LINE
- RECESSED PENDENT HEAD ON BRANCH LINE
- DRY HORIZONTAL SIDEWALL ON BRANCH LINE
- PIPE RISE OR DROP
- PIPE ELEVATION OFF FINISH FLOOR
- HYDRAULIC NODE
- WET SYSTEM RISER
- DRY SYSTEM RISER

DEAN & ALLYN, INC.
 FIRE PROTECTION • SPECIAL HAZARD
 116 LEWISTON ROAD, GRAY, MAINE 04039
 (207)657-5646 FAX:(207)657-5647

SCALE 3/32"=1'-0"		SCALE 1/8"=1'-0"		SCALE 3/16"=1'-0"		SCALE 1/4"=1'-0"		DANA A. STEWART NICET IV - #064544		DRAWING TITLE: DETAILS & 1ST FLOOR		SUBMITTAL	
APPROVED BY		DATE		SURVEYED BY		SEC		JOB:		NO. OF SPRINKLERS SHOWN ON THIS SHEET		25	
//		//		//		7/18/16		WEST PORT CONDOMINIUMS		NO. OF SPRINKLERS ON JOB		73	
//		//		//		7/18/16		22-28 TATE STREET		CONTRACT NO.		C161349	
//		//		//		7/18/16		PORTLAND, MAINE 04101		CONTRACT WITH:			
SUBMIT FOR APPROVAL		7/18/16		//		SCALE 1/4"=1'-0" U/N		CONTRACT WITH:					
REVISIONS		DATE		//		SHEET NO. 1 OF 2							