

Developer
 Tate Street Partnership, LLC
 17 Chestnut Street
 Portland, Maine, 04101

Structural Design
 SDC
 MEP: Design/Build

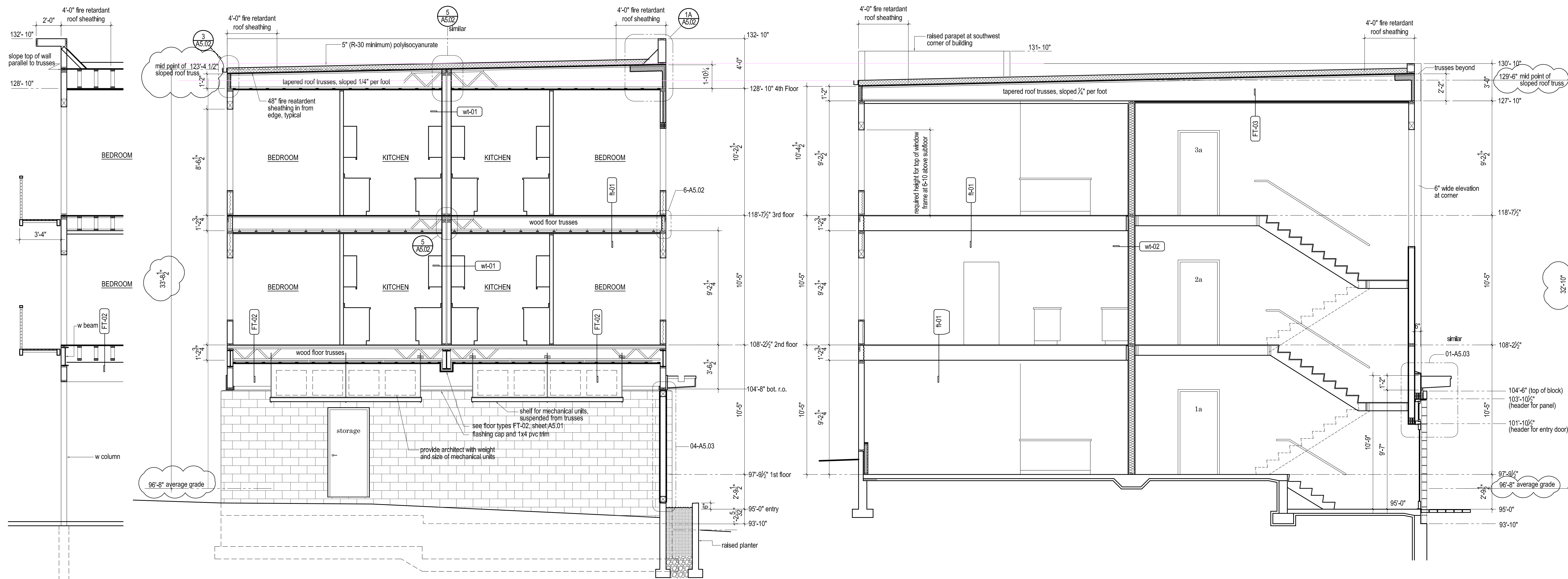
Architect
ARCHITYPE
 architects
 48 Union Wharf Portland, Maine 04101
 (207) 772-6022 Fax (207) 772-4056

Project:
 West Port Lofts Condominiums
 8 Unit Apartment Building
 22-28 Tate Street, Portland, Maine, 04101
 Tax Map 44, Block E, Lots 15, 17, & 19

Issued for Construction

Date:
 April 14 2016
Building Sections

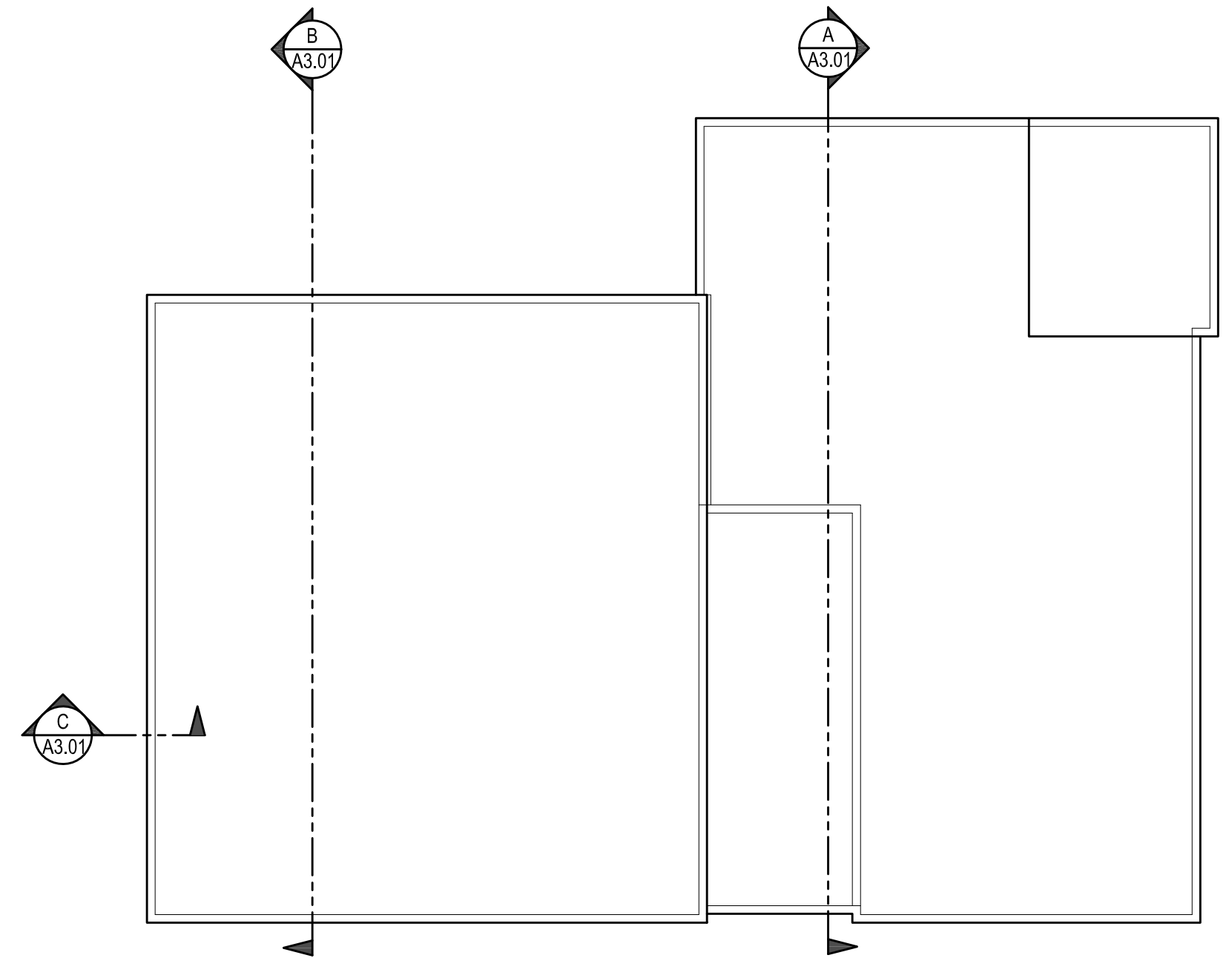
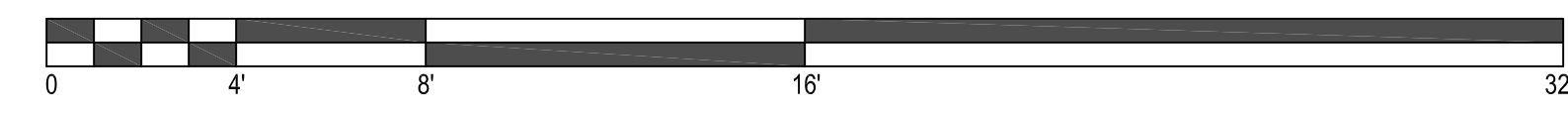
A3.01



C Building Section B
 1/4" = 1'-0"

B Building Section B
 1/4" = 1'-0"

A Building Section A
 1/4" = 1'-0"



Key Plan
 1/8" = 1'-0"